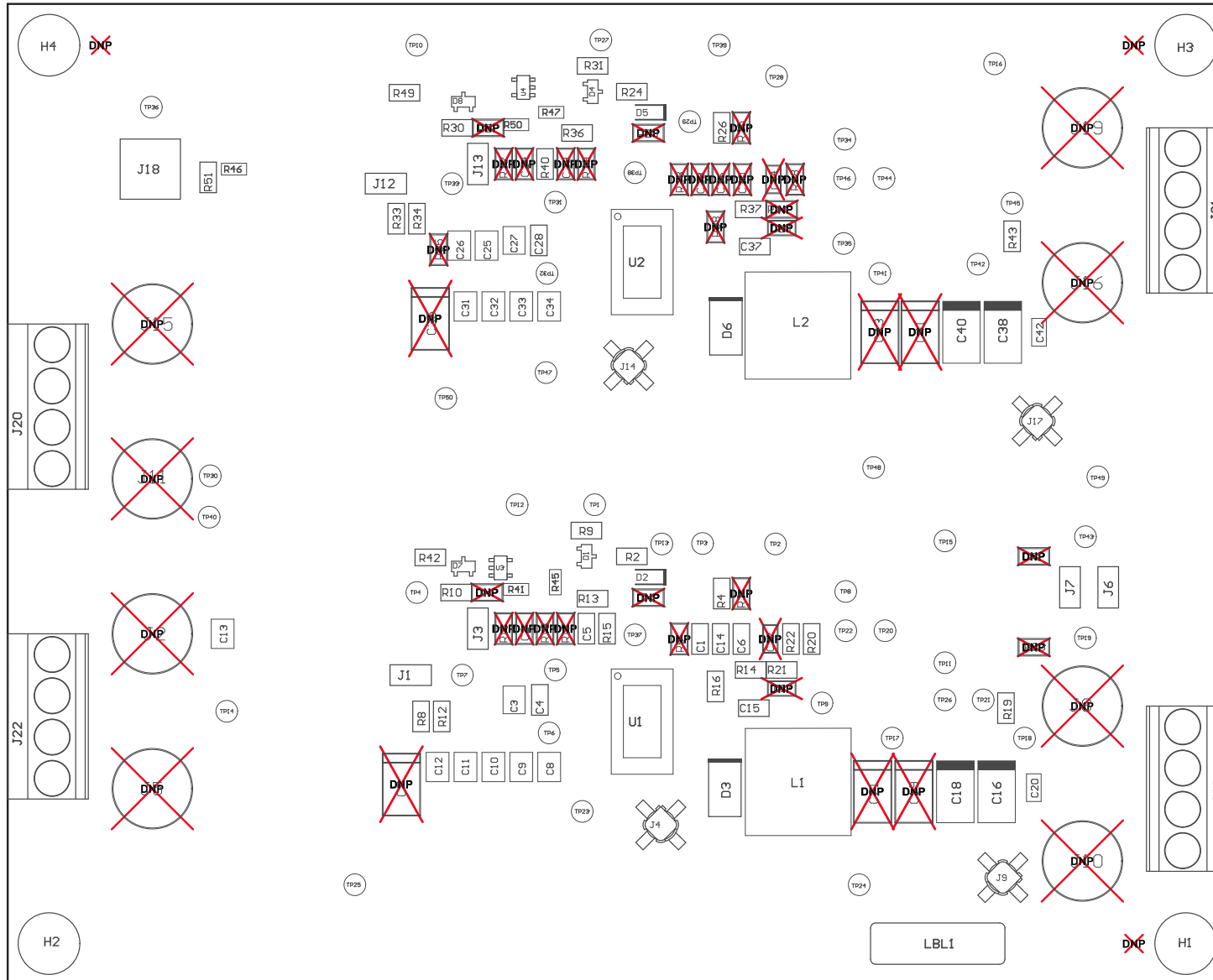


Z21 ■ Install label in silkscreened box after final wash. Text shall be 8 pt font. Text shall be per the Label Table in the PDF schematic.  
 Z22 ■ These assemblies are ESD sensitive, ESD precautions shall be observed.  
 Z23 ■ These assemblies must be clean and free from flux and all contaminants. Use of no clean flux is not acceptable.  
 Z24 ■ These assemblies must comply with workmanship standards IPC-A-610 Class 2, unless otherwise specified.  
 Z25 ■ Shunt SH-J1 connects Pin 1 and 2 of jumper J1 to connect PUIN and VIN.



COMPONENTS MARKED 'DNP' SHOULD NOT BE POPULATED.  
 ASSEMBLY VARIANT: 002

PCB VIEWED FROM TOP SIDE	BOARD #: SLHR003	REV: C	SUN REV: Not In VersionControl
	TID #: N/A		
PLOT NAME = Top Assembly Drawing	GENERATED : 11/30/2018 1:25:15 PM	TEXAS INSTRUMENTS	



COMPONENTS MARKED 'DNP' SHOULD NOT BE POPULATED.  
ASSEMBLY VARIANT: 002

PCB VIEWED FROM BOTTOM SIDE	BOARD #: SLHR003	REV: C	SUN REV: Not In VersionControl
	TID #: N/A		
PLOT NAME = Bottom Assembly Drawing	GENERATED : 11/30/2018 1:25:17 PM		TEXAS INSTRUMENTS