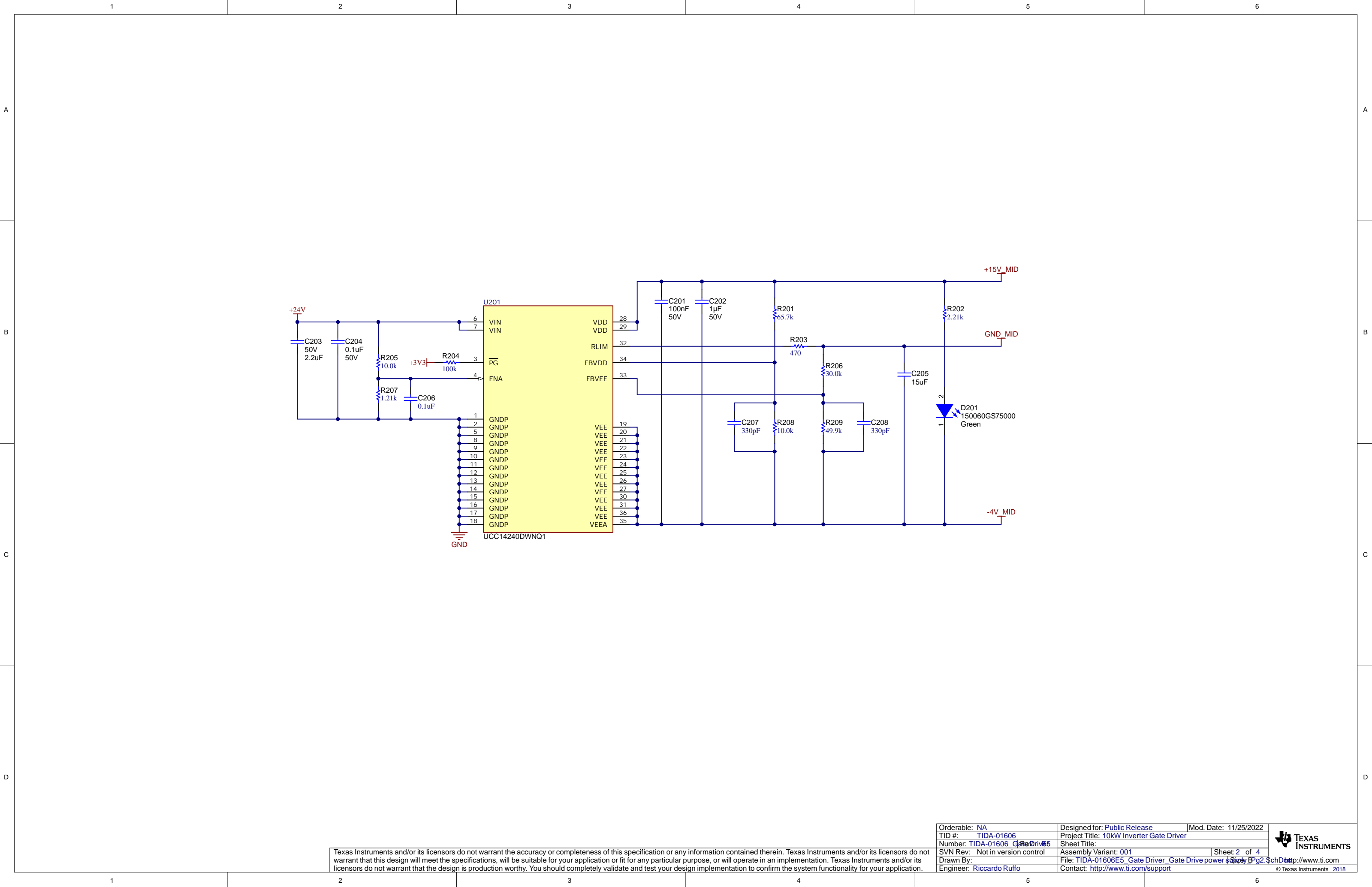


PCB  
LOGO  
FCC disclaimer

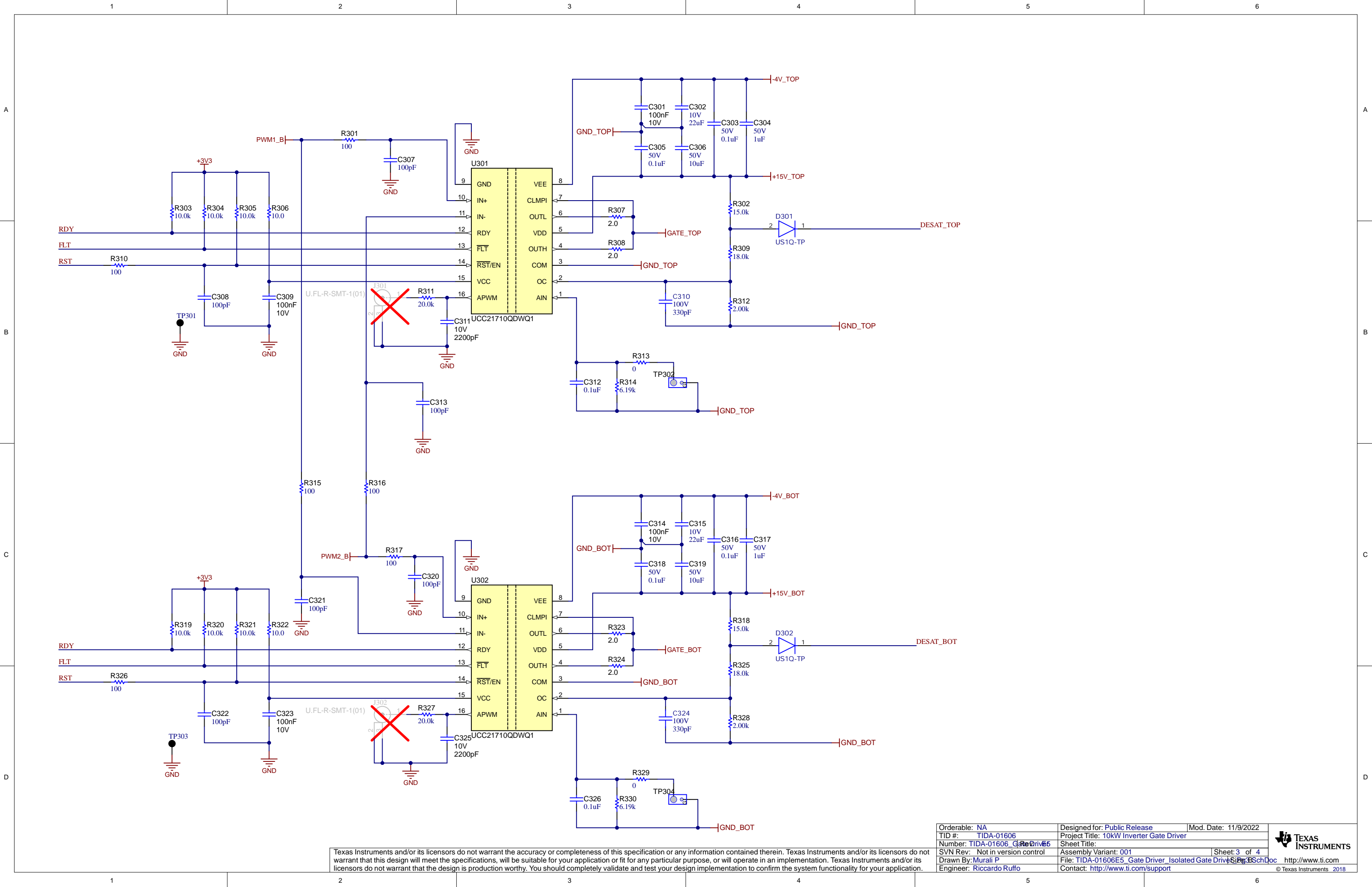
PCB  
LOGO  
WEEE logo

PCB Number: TIDA-01606\_Gate Driver  
PCB Rev: E5




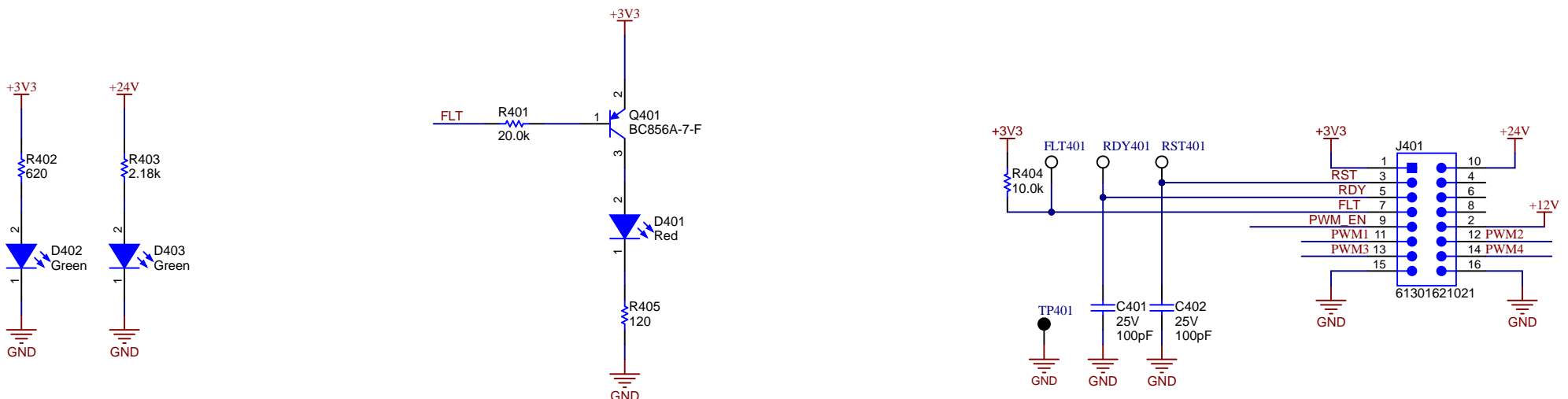
Texas Instruments and/or its licensors do not warrant the accuracy or completeness of this specification or any information contained therein. Texas Instruments and/or its licensors do not warrant that this design will meet the specifications, will be suitable for your application or fit for any particular purpose, or will operate in an implementation. Texas Instruments and/or its licensors do not warrant that the design is production worthy. You should completely validate and test your design implementation to confirm the system functionality for your application.

Orderable: NA	Designed for: Public Release	Mod. Date: 11/25/2022
TID #: TIDA-01606	Project Title: 10kW Inverter Gate Driver	
Number: TIDA-01606_Gate Drive E5	Sheet Title:	
SVN Rev: Not in version control	Assembly Variant: 001	Sheet: 2 of 4
Drawn By:	File: TIDA-01606E5_Gate Driver_Gate Drive power \$Size Bg2.SchDoc	http://www.ti.com
Engineer: Riccardo Ruffo	Contact: http://www.ti.com/support	

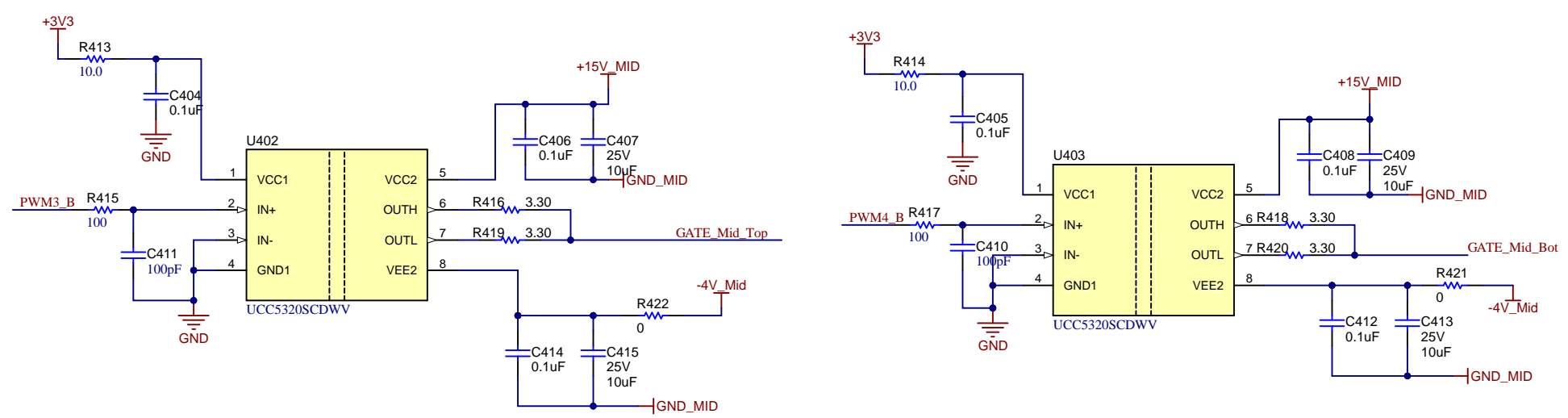
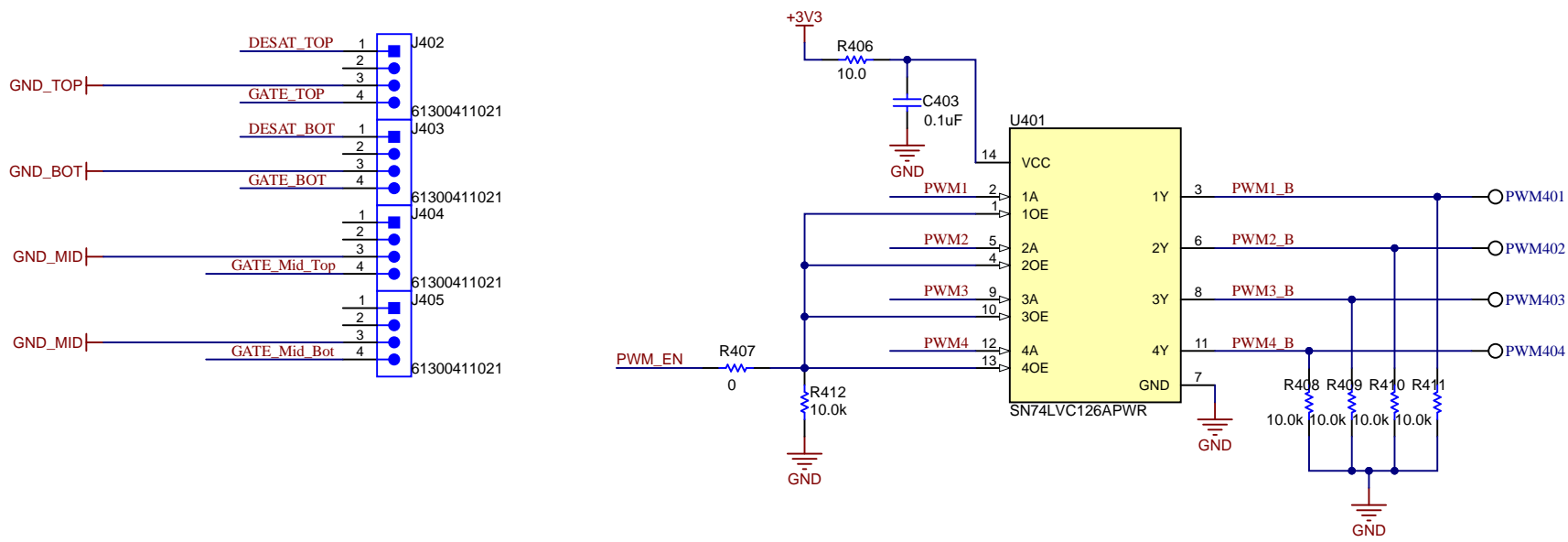


Texas Instruments and/or its licensors do not warrant the accuracy or completeness of this specification or any information contained therein. Texas Instruments and/or its licensors do not warrant that this design will meet the specifications, will be suitable for your application or fit for any particular purpose, or will operate in an implementation. Texas Instruments and/or its licensors do not warrant that the design is production worthy. You should completely validate and test your design implementation to confirm the system functionality for your application.

Orderable: NA	Designed for: Public Release	Mod. Date: 11/9/2022	
TID #: TIDA-01606	Project Title: 10kW Inverter Gate Driver	Sheet Title:	
Number: TIDA-01606_GateDriverE5	Assembly Variant: 001	Sheet: 3 of 4	
SVN Rev: Not in version control	File: TIDA-01606E5_Gate_Driver_Isolated_Gate_Driver_SchDoc	http://www.ti.com	
Drawn By: Murali P	Engineer: Riccardo Rufo	Contact: http://www.ti.com/support	



+24 V is not available in the current versions of power board. You need to route a cable to corresponding pin



Orderable: NA	Designed for: Public Release	Mod. Date: 11/9/2022
TID #: TIDA-01606	Project Title: 10kW Inverter Gate Driver	
Number: TIDA-01606	Sheet Title:	
SVN Rev: Not in version control	Assembly Variant: 001	Sheet: 4 of 4
Drawn By:	File: TIDA-01606E5 Gate Driver Isolated Gate Driver Schematic	http://www.ti.com
Engineer: Riccardo Ruffo	Contact: http://www.ti.com/support	© Texas Instruments 2018

Texas Instruments and/or its licensors do not warrant the accuracy or completeness of this specification or any information contained therein. Texas Instruments and/or its licensors do not warrant that this design will meet the specifications, will be suitable for your application or fit for any particular purpose, or will operate in an implementation. Texas Instruments and/or its licensors do not warrant that the design is production worthy. You should completely validate and test your design implementation to confirm the system functionality for your application.