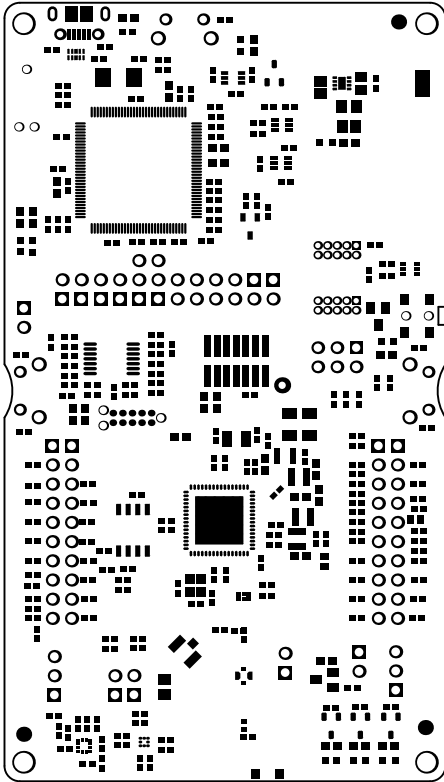
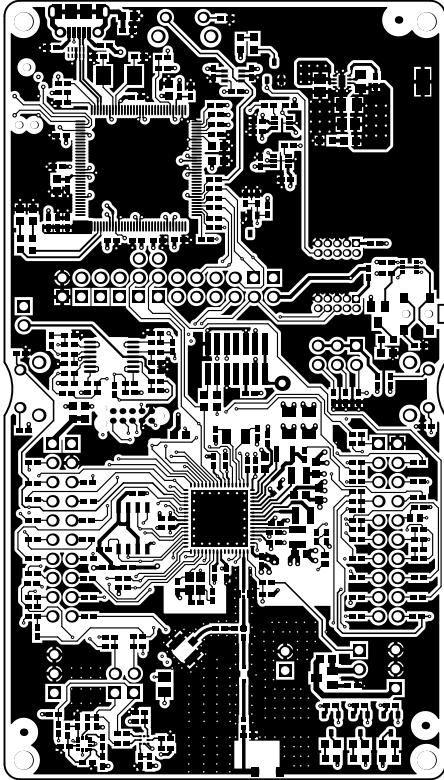


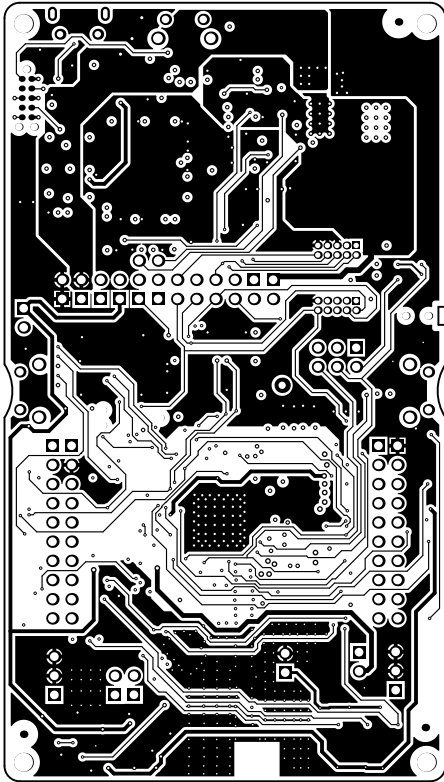
ALL ARTWORK VIEWED FROM TOP SIDE	BOARD #: WCS002	REV: A	SUN REV: Not In VersionControl
LAYER NAME = SILKSCREEN TOP			
PLOT NAME = Top Overlay	GENERATED : 1/23/2017 4:17:09 PM		TEXAS INSTRUMENTS



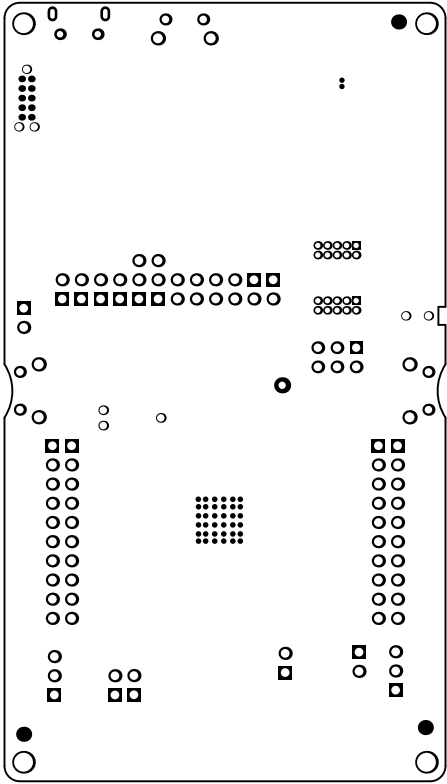
ALL ARTWORK VIEWED FROM TOP SIDE	BOARD #: WCS002	REV: A	SUN REV: Not In VersionControl
LAYER NAME = Top Solder			
PLOT NAME = Top Solder Mask	GENERATED : 1/23/2017 4:17:18 PM	TEXAS INSTRUMENTS	



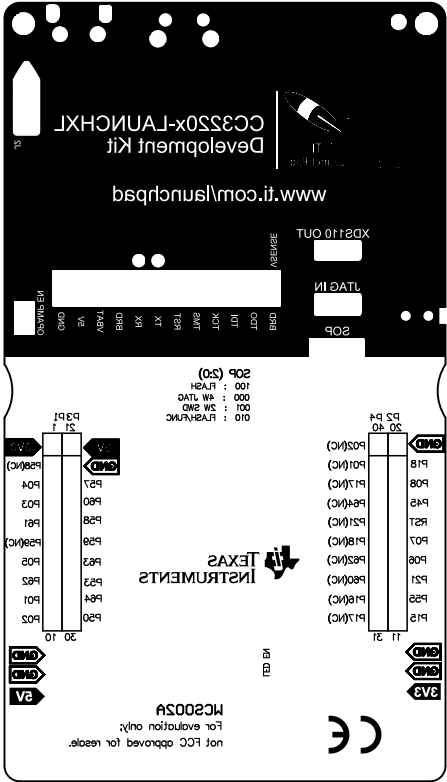
ALL ARTWORK VIEWED FROM TOP SIDE	BOARD #: WCS002	REV: A	SUN REV: Not In VersionControl
LAYER NAME = TOP			
PLOT NAME = Top Layer	GENERATED : 1/23/2017 4:17:27 PM	TEXAS INSTRUMENTS	



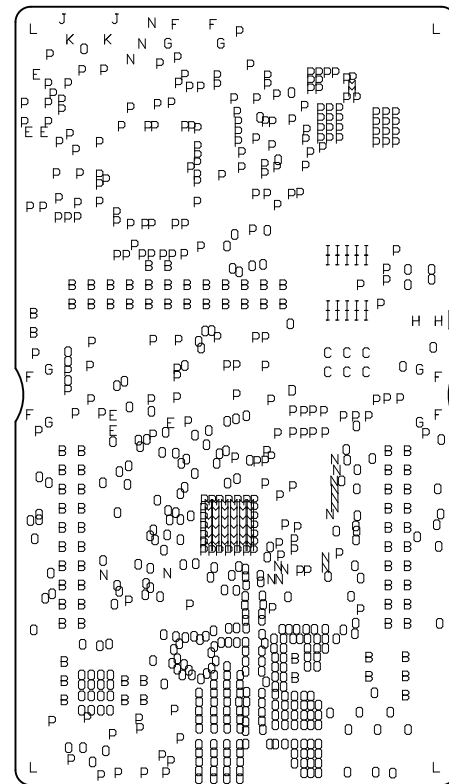
ALL ARTWORK VIEWED FROM TOP SIDE	BOARD #: WCS002	REV: A	SUN REV: Not In VersionControl
LAYER NAME = BOTTOM			
PLOT NAME = Bottom Layer	GENERATED : 1/23/2017 4:17:36 PM	TEXAS INSTRUMENTS	



ALL ARTWORK VIEWED FROM TOP SIDE	BOARD #: WCS002	REV: A	SUN REV: Not In VersionControl
LAYER NAME = Bottom Solder			
PLOT NAME = Bottom Solder Mask	GENERATED : 1/23/2017 4:17:45 PM	TEXAS INSTRUMENTS	



ALL ARTWORK VIEWED FROM TOP SIDE	BOARD #: WCS002	REV: A	SUN REV: Not In VersionControl
LAYER NAME = SILKSCREEN BOTTOM			
PLOT NAME = Bottom Overlay	GENERATED : 1/23/2017 4:17:53 PM	TEXAS INSTRUMENTS	



Symbol	Hit Count	Finished Hole Size	Plated	Hole Type	Physical Length	Rout Path Length	Tolerance
O	344	8.00mil (0.203mm)	PTH	Round	-	-	
P	244	12.00mil (0.305mm)	PTH	Round	-	-	
M	38	12.10mil (0.307mm)	PTH	Round	-	-	
N	18	16.00mil (0.406mm)	PTH	Round	-	-	
J	2	23.62mil (0.600mm)	PTH	Slot	51.18mil (1.300mm)	27.56mil (0.700mm)	
I	20	27.95mil (0.710mm)	PTH	Round	-	-	
K	2	33.46mil (0.850mm)	PTH	Round	-	-	
D	1	37.99mil (0.965mm)	PTH	Round	-	-	
E	6	39.00mil (0.991mm)	NPTH	Round	-	-	
H	2	39.37mil (1.000mm)	NPTH	Round	-	-	
F	6	39.37mil (1.000mm)	PTH	Round	-	-	
C	6	43.31mil (1.100mm)	PTH	Round	-	-	
B	82	45.28mil (1.150mm)	PTH	Round	-	-	
G	6	51.18mil (1.300mm)	PTH	Round	-	-	
L	4	98.43mil (2.500mm)	NPTH	Round	-	-	
	781 Total						

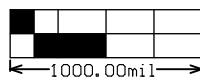
Slot definitions : Rout Path Length = Calculated from tool start centre position to tool end centre position.
Physical Length = Rout Path Length + Tool Size = Slot length as defined in the PCB layout

ADDITIONAL FAB NOTES

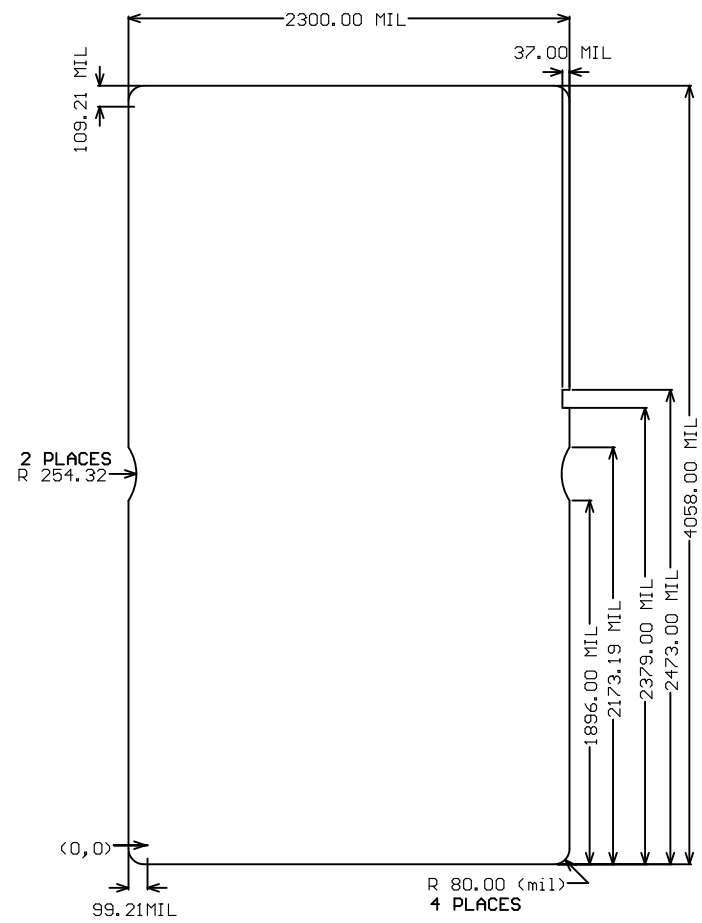
1.8 MIL, 12 MIL & 16 MIL VIAS ARE TENTED ON BOTH SIDES.

2.ALL OTHER DRILL TOLERANCE FOR PLATED ± 3 MIL AND NPTH ± 2 MIL

(UNLESS OTHERWISE SPECIFIED)



ALL ARTWORK VIEWED FROM TOP SIDE	BOARD #: WCS002	REV: A	SUN REV: Not In VersionControl
LAYER NAME = Drill Drawing			
PLOT NAME = Drill Drawing	GENERATED : 1/23/2017 4:18:02 PM		TEXAS INSTRUMENTS



ALL ARTWORK VIEWED FROM TOP SIDE	BOARD #: WCS002	REV: A	SUN REV: Not In VersionControl
LAYER NAME =			
PLOT NAME = Board Dimensions	GENERATED : 1/23/2017 4:18:12 PM	TEXAS INSTRUMENTS	