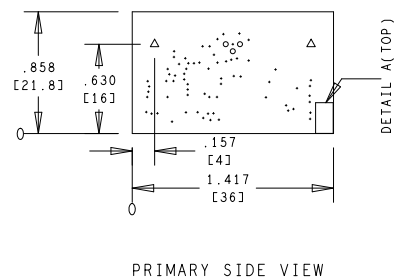


LAYER STACK-UP - ALL DIMENSIONS IN INCHES				
		50ohm SINGLE ENDED IMPEDANCE CONTROL +/- 10%	75ohm SINGLE ENDED IMPEDANCE CONTROL +/- 10%	100ohm DIFFERENTIAL IMPEDANCE CONTROL +/- 10%
LAYER#	COPPER WEIGHT (oz)	N/A	N/A	N/A
LAYER 1 - PRIMARY SIDE - SIGNAL	HALF+PLATING			
LAYER 2 - POWER PLANE	1			
LAYER 3 - GND PLANE	1			
LAYER 4 - SECONDARY SIDE - SIGNAL	HALF+PLATING			



FAB NOTES:

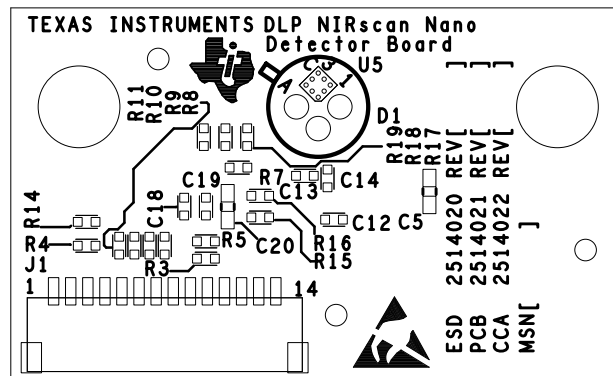
- ALL DIMENSIONS ARE IN INCHES, UNLESS OTHERWISE NOTED. ALL BOARD OUTLINE DIMENSION TOLERANCES ARE +/- 0.010".
- THE PWB SHALL BE FABRICATED TO IPC-6012, CLASS 2 AND WORKMANSHIP SHALL CONFORM TO IPC-A-600, CLASS 2. CURRENT REVISIONS.
- BOARD MATERIAL SHALL BE 180 Tg/340 Td ISOLA FR-370HR OR EQUIVALENT, RoHS COMPLIANT AND LEAD FREE ASSEMBLY CAPABLE. BOARD MATERIAL SHALL MEET OR EXCEED IPC-4101B. COLOR: NATURAL.
- BOARD MATERIAL & CONSTRUCTION TO BE U.L. APPROVED AND MARKED ON THE FINISHED BOARD. MATERIAL SHALL MEET A MINIMUM OF 94V-0 FLAMMABILITY RATING AND BE MARKED IN COPPER ON THE TOP SIDE OF THE BOARD IN INDICATED AREA (DETAIL A).
- MINIMUM COPPER WALL THICKNESS OF PLATED-THRU HOLES TO BE .001 INCH, WITH A MINIMUM ANNULAR RING OF .002 INCH.
- OVERALL BOARD THICKNESS TO BE .062 +/- 10% AND APPLIES AFTER ALL LAMINATION AND PLATING PROCESSES, MEASURED FROM COPPER TO COPPER.
- MAX. WARP & TWIST TO BE .0075 INCHES PER INCH.
- BOARD MUST BE ELECTRICALLY TESTED USING SUPPLIED IPC-D-356 NETLIST.

PROCESS NOTES:

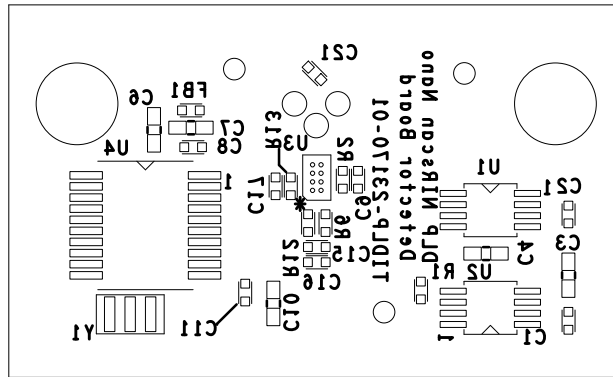
- PLATE ALL EXPOSED AREAS WITH ELECTROLESS IMMERSION GOLD. NICKEL 100 MICROINCHES THK. GOLD 2-6 MICROINCHES THK MIN.
- APPLY LPI SOLDERMASK OVER BARE COPPER (SMOBC). COLOR: RED. SOLDERMASK SHALL CONFORM TO IPC-SM-840, CLASS H. CURRENT REV.
- SOLDERMASK ARTWORK HAS ZERO (0) OVERSIZED PADS. FABRICATION VENDOR IS ALLOWED TO ADJUST THE COMPONENT SOLDERMASK PADS TO MEET THEIR TOOLING REQUIREMENTS.
- APPLY LPI SILKSCREEN OR EQUIVALENT PER THE ARTWORK. COLOR: WHITE.

DRILL CHART: TOP to BOTTOM				
ALL UNITS ARE IN MILS				
FIGURE	SIZE	TOLERANCE	PLATED	QTY
.	12.0	+3.0/-12.0	PLATED	68
o	40.0	+3.0/-3.0	PLATED	3
Δ	111.0	+3.0/-3.0	PLATED	2

CUSTOMER NAME		TEXAS INSTRUMENTS			
BOARD NAME		Mobile Spectroscopy Det.Bd.		DESCRIPTION	
				DRILL DRAWING	
BOARD NO.	2514021	REV	-	DATE	30MAY2014
				PRJ#	TIDL-23170-01
				SH	11 OF 11



CUSTOMER NAME		TEXAS INSTRUMENTS		
BOARD NAME		DESCRIPTION		
Mobile Spectroscopy Det.Bd.		ASSEMBLY SILKSCREEN - PRIMARY SIDE		
BOARD NO.	2514021	REV	DATE	PRJ#
		-	30MAY2014	TIDL P-23170-01
		SH	7	OF 11



CUSTOMER NAME		TEXAS INSTRUMENTS		
BOARD NAME		DESCRIPTION		
Mobile Spectroscopy Det.Bd.		ASSEMBLY SILKSCREEN-SECONDARY SIDE		
BOARD NO.	2514021	REV	DATE	PRJ#
		-	30MAY2014	TIDLP-23170-01
		SH	OF	
		8	11	