

1

2

7

8

ASY 501-1-01019-B1 CONSISTS OF FOLLOWING ASSEMBLY DATA

501-1-01019-B1_PMT .ART - TOP PASTE (TOP PASTE)
501-1-01019-B1_PNP .TXT - PICK AND PLACE DATA
501-1-01019-B1_PMB .ART - BOTTOM PASTE (BOTTOM PASTE)

REV	DATE	REVISION NOTES	PCB DESIGNER
A1	12-SEP-19	INITIAL RELEASE	VVDN
A2	17-SEP-19	FAB COMMENTS UPDATE	VVDN
B1	15-NOV-19	DESIGN CHANGE	VVDN

NOTES:

UNLESS OTHERWISE SPECIFIED.

CAUTION :

COMPONENTS ARE SUBJECT TO DAMAGE BY STATIC ELECTRICITY.

ASSEMBLY TOP

TIDA-050038

ALL DIMENSIONS ARE IN MM

DESIGNED FOR: TIXU_MX8M	LAYER: ASSEMBLY
PART NO:701-1-01225	REV:B1
PARTNAME:IMX8M MINI SOM BOARD	TOLERANCE + / - 0.1MM
	SHEET : 1 OF 3

MAXIMUM HEIGHT 10.5389 MM
PCB PRIMARY SIDE

MAXIMUM HEIGHT 1.6499 MM
PCB SECONDARY SIDE

PCB TOTAL THICKNESS:1.2mm+/-10%

PCBA ASSEMBLY DRAWING

VVDN TECHNOLOGIES PVT.LTD.

TITLE:

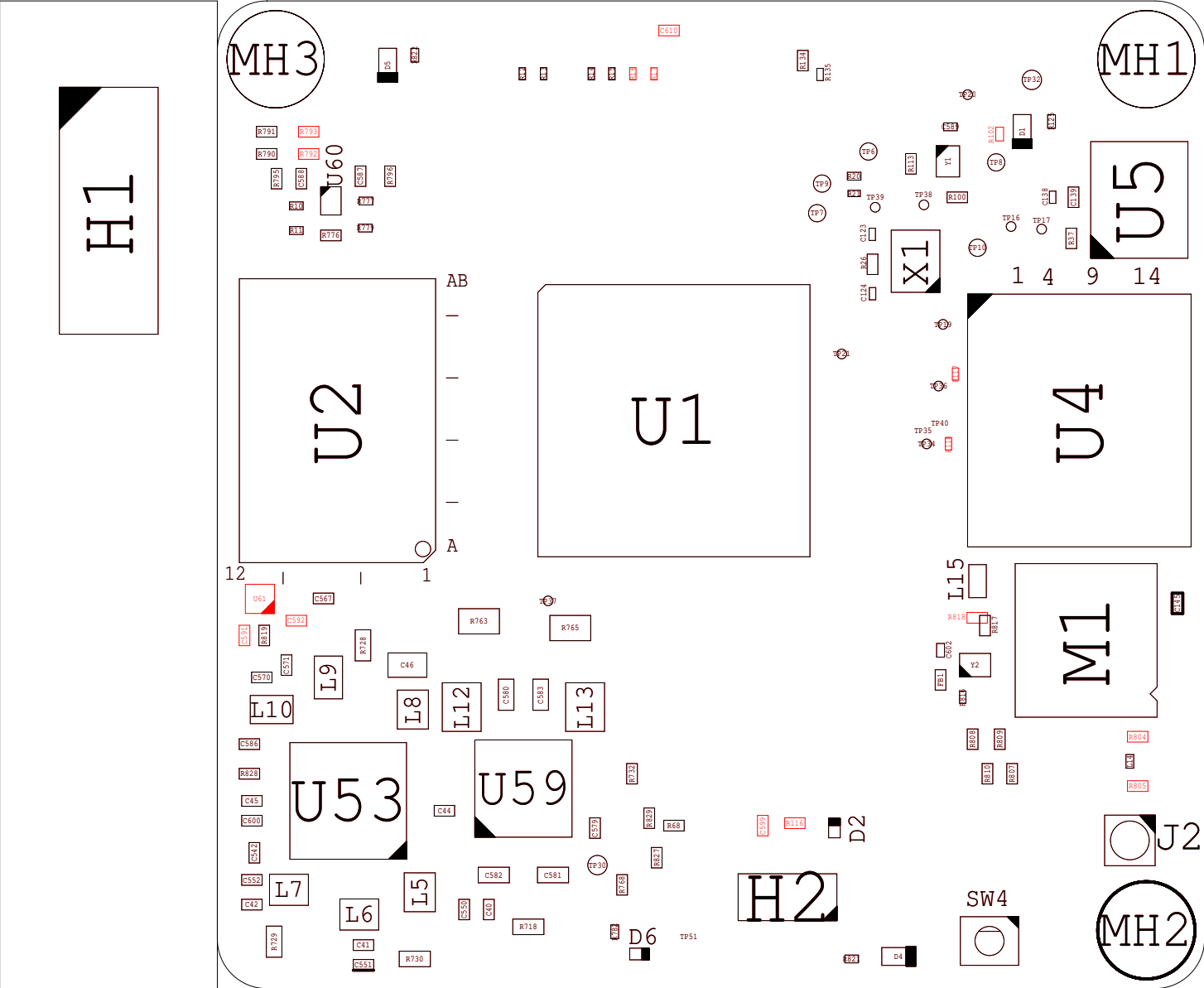
APCB, DS,
TIXU_MX8M, IMX8M MINI SOM BOARD

NEEDS TO BE
UPDATED MANUALLY

ASY NUMBER:701-1-01225-B1

REV
B1

8

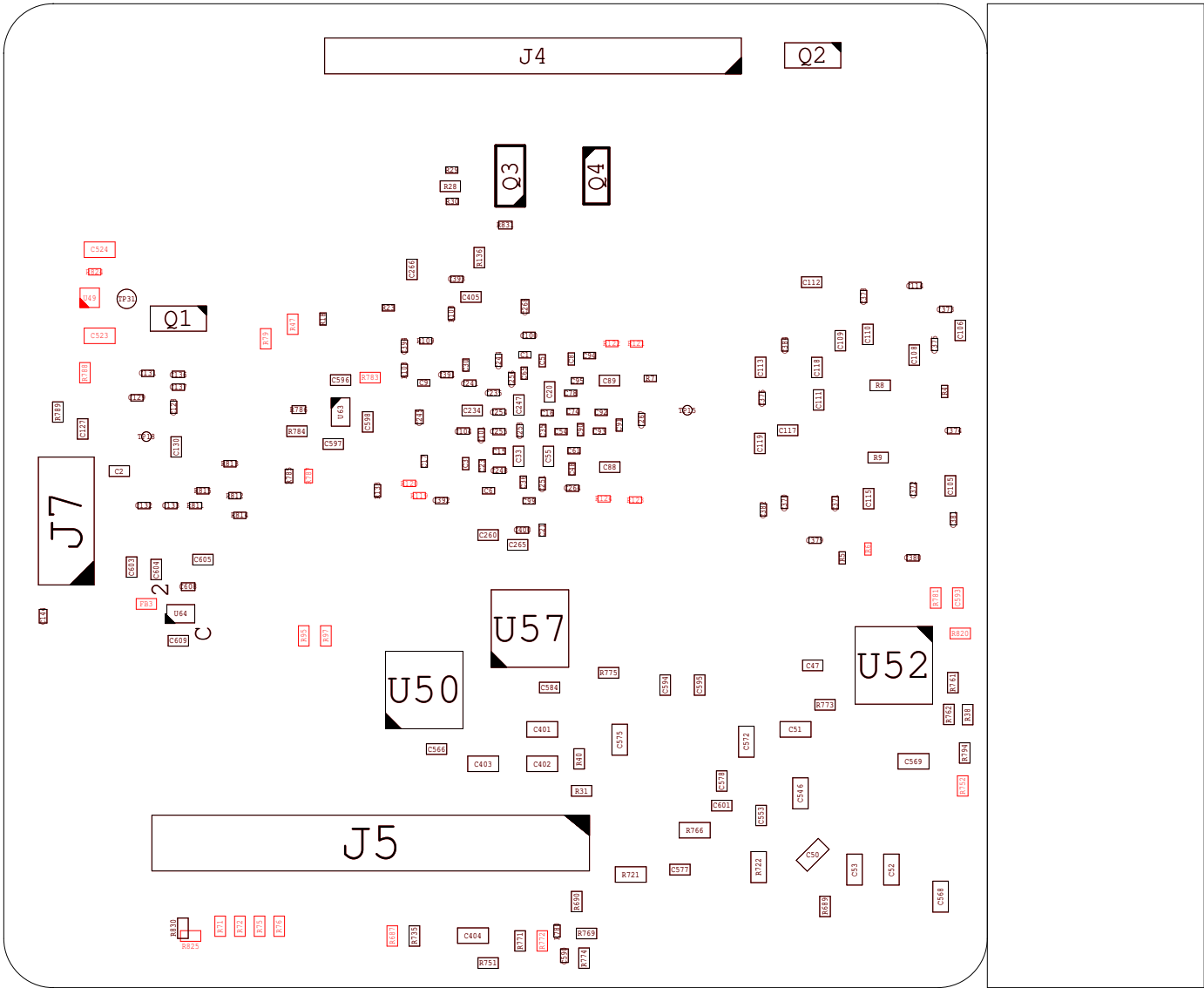


TIDA-050038

ALL DIMENSIONS ARE IN MM

DESIGNED FOR: TIXU_MX8M		LAYER: ASSEMBLY TOP
PART NO:701-1-01225	REV:B1	TOLERANCE + / - 0.1MM
PARTNAME:IMX8M MINI SOM BOARD		SHEET : 2 OF 3

ASSEMBLY BOTTOM



TIDA-050038

ALL DIMENSIONS ARE IN MM

DESIGNED FOR: TIXU_MX8M		LAYER: ASSEMBLY BOTTOM
PART NO:701-1-01225	REV:B1	TOLERANCE + / - 0.1MM
PARTNAME:IMX8M MINI SOM BOARD		SHEET : 3 OF 3