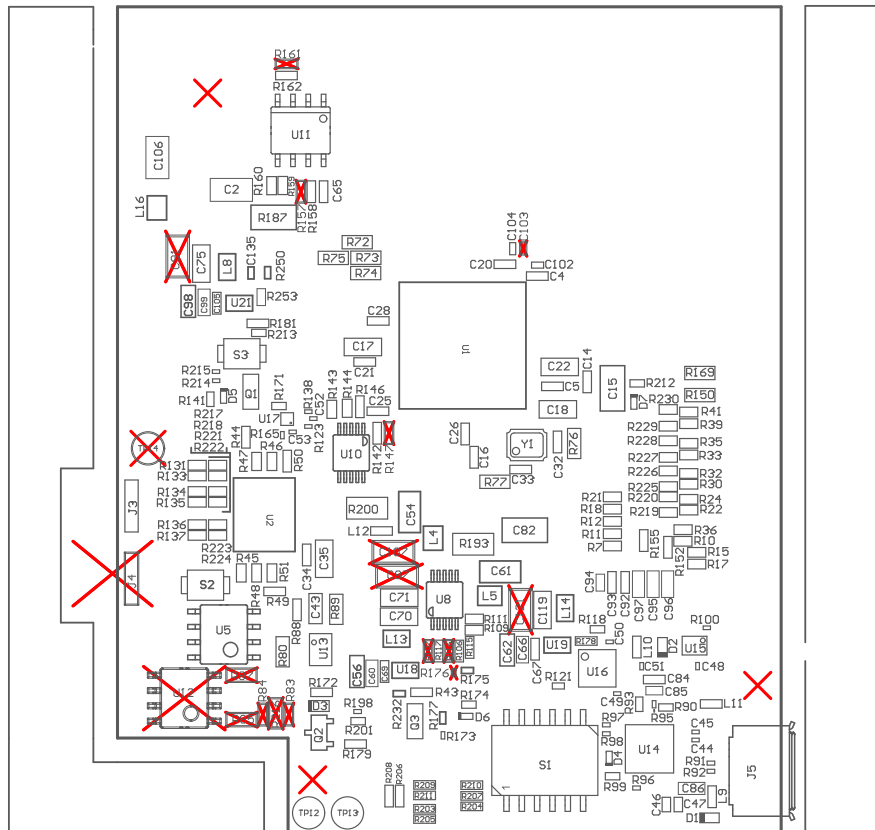
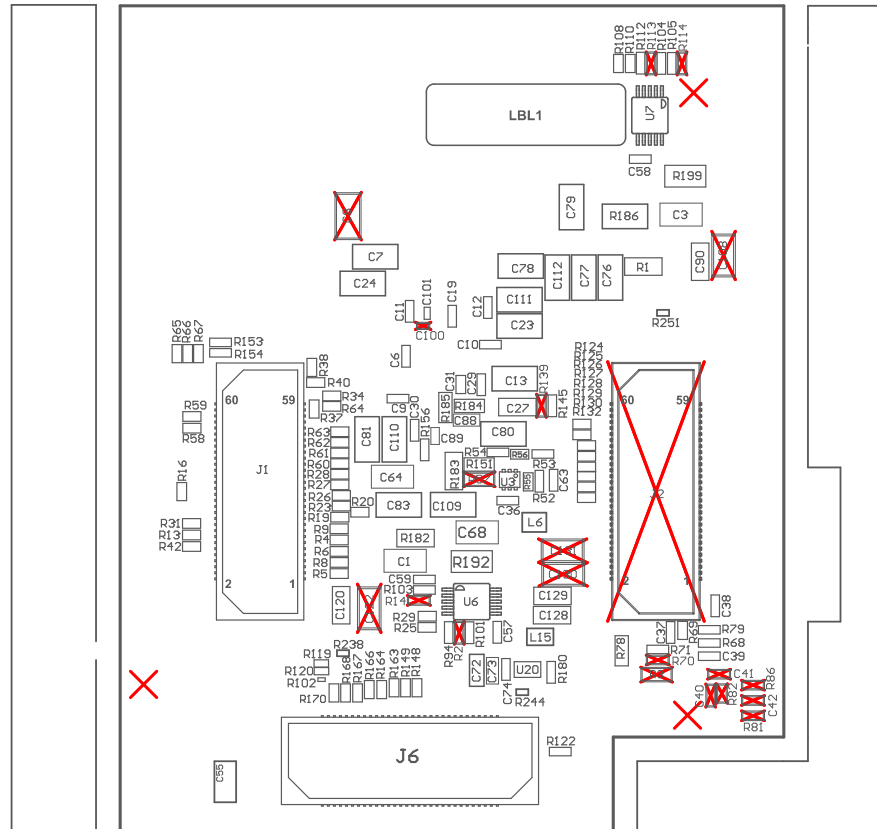


ZZ1 ■ Install label in silkscreened box after final wash. Text shall be 8 pt font. Text shall be per the Label Table in the PDF schematic.
 ZZ2 ■ These assemblies are ESD sensitive, ESD precautions shall be observed.
 ZZ3 ■ These assemblies must be clean and free from flux and all contaminants. Use of no clean flux is not acceptable.
 ZZ4 ■ These assemblies must comply with workmanship standards IPC-A-610 Class 2, unless otherwise specified.
 ZZ5 ■ INDICATION FOR COMPONENTS D* ARE GIVEN AT THEIR CATHODE SIDE.



COMMENTS: COMPONENTS MARKED 'DNP' SHOULD NOT BE POPULATED.
 ASSEMBLY VARIANT: 001_IWR

PCB VIEWED FROM TOP SIDE	BOARD #: PROC116	REV: A	SUN REV: 122
Assembly Layer Top	TID #: N/A		
PLOT NAME = Top Assembly Drawing	GENERATED : 21-10-2021 10:00:47	TEXAS INSTRUMENTS	



COMPONENTS MARKED 'DNP' SHOULD NOT BE POPULATED.
 ASSEMBLY VARIANT: 001_IWR

PCB VIEWED FROM BOTTOM SIDE	BOARD #: PROC116	REV: A	SUN REV: 122
Assembly Bottom Layer	TID #: N/A		
PLOT NAME = Bottom Assembly Drawing	GENERATED : 21-10-2021 10:04:42	TEXAS INSTRUMENTS	