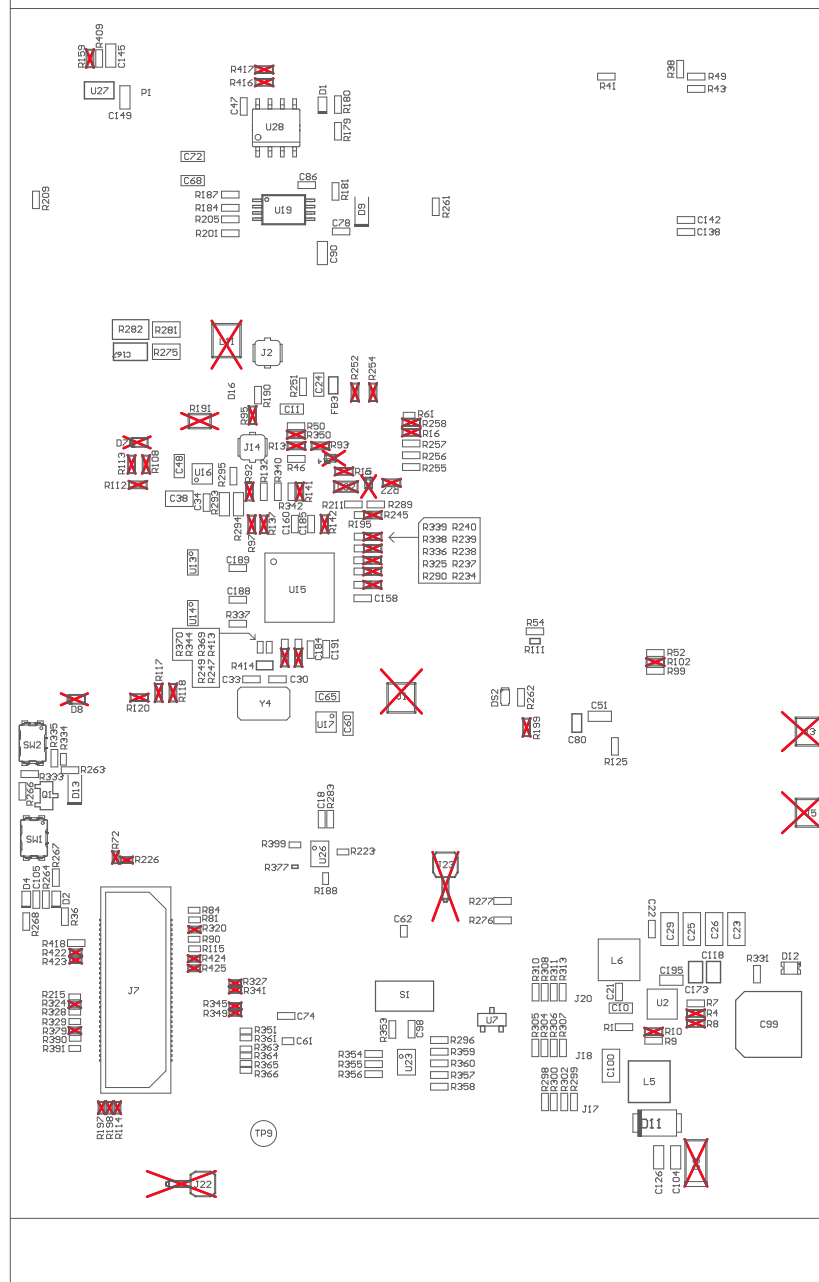


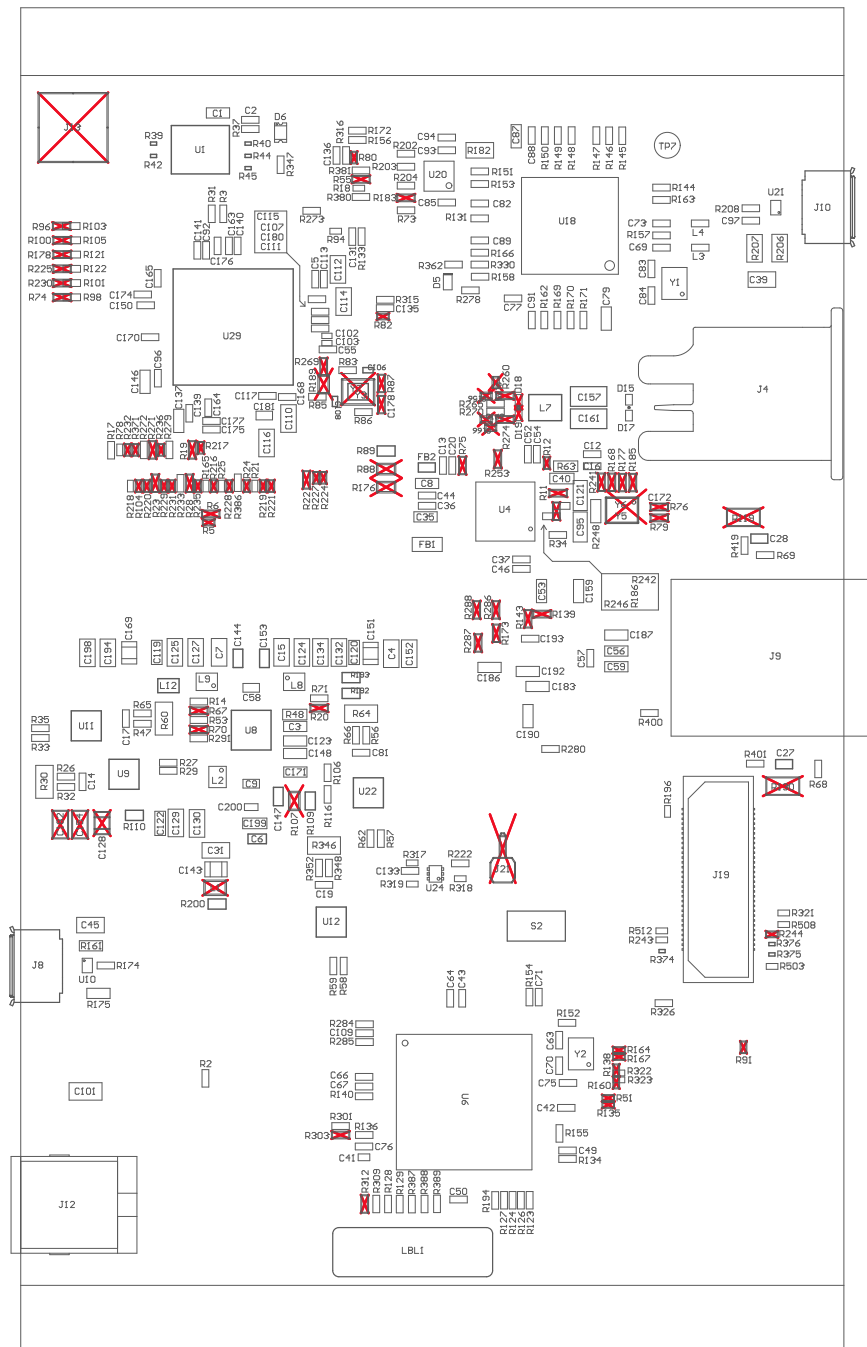
Z21 ■ Install label in silkscreened box after final wash. Text shall be per the Label Table in the PDF schematic.

Z22 ■ These assemblies are ESD sensitive, ESD precautions shall be observed.

Z23 ■ These assemblies must be clean and free from flux and all contaminants. Use of no clean flux is not acceptable.

Z24 ■ These assemblies must comply with workmanship standards IPC-A-610 Class 2, unless otherwise specified.





COMPONENTS MARKED 'DNP' SHOULD NOT BE POPULATED.  
ASSEMBLY VARIANT: 001

PCB VIEWED FROM BOTTOM SIDE	BOARD #: PROC158	REV: A	SUN REV: 259
	TID #: N/A		
PLOT NAME = Bottom Assembly Drawing	GENERATED : 11/7/2023 11:38:25 AM	TEXAS INSTRUMENTS	