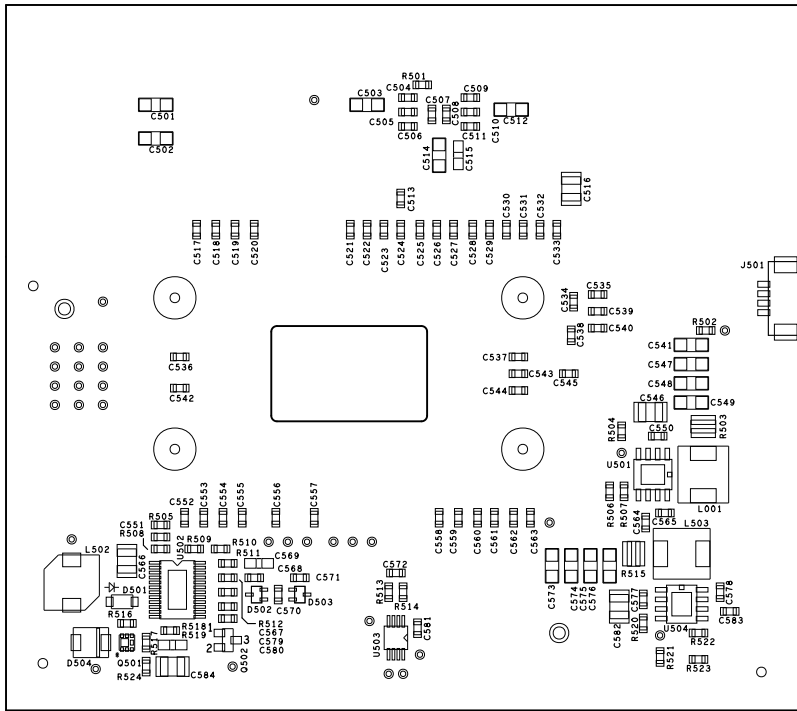


NOTE : PL14927-1542-01F (Z_MECH1) socket part is placed down first on board in the location for U1
The U1 part will be placed on socket afterwards

CUSTOMER NAME				TEXAS INSTRUMENTS		DRAWN		SVTRONICS	
BOARD NAME				DLP471TE and DLP650TE EVMs		DESCRIPTION			
						ASSEMBLY TOP			
BOARD NO.			REV	DATE		PRJ#		SH	
			A	03-10-2021		DLP057		20 OF 21	



BOARD NO.		REV	DATE	PRJ#	ASSEMBLY BOTTOM	CUSTOMER NAME TEXAS INSTRUMENTS	DRAWN 20INORTV2
A			03-10-2021	DL027			
BOARD NAME		DESCRIPTION					
DLP471TE and DLP620TE EVMS							