

3-Phase Non-Isolated High-Side Buck Controller Reference Design



Description

This reference design is an 3-phase input offline high-side buck controller power supply that provides an 12-V output at a maximum of 1 A. The input accepts a voltage range of 43 V_{AC} to 255 V_{AC} per phase. The reference design uses the UCC28C55 low-power current-mode PWM controller.

Features

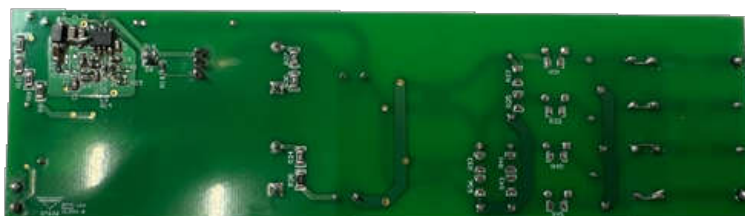
- Current-mode PWM controller
- Very wide input voltage range: 40 V_{DC}–623 V_{DC}
- Non-isolated high-side buck controller topology eliminates the need for an optocoupler

Applications

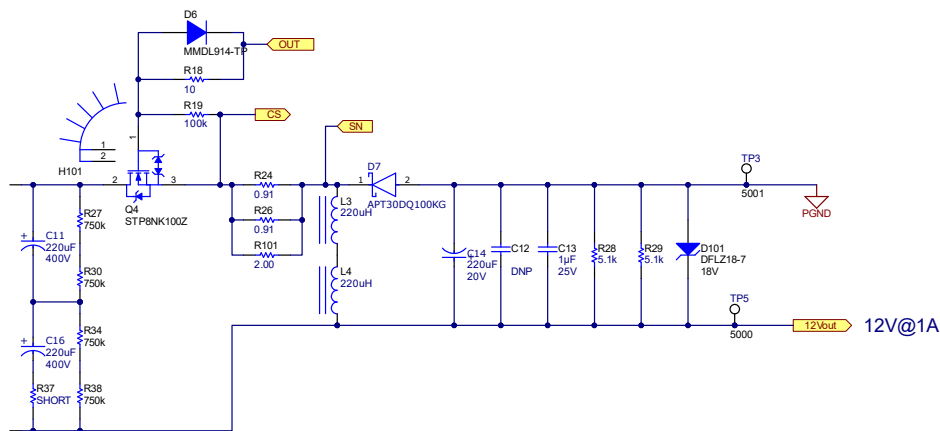
- [Electricity meter](#)



Top of Board



Bottom of Board



Schematic

1 Test Prerequisites

1.1 Voltage and Current Requirements

Table 1-1. Voltage and Current Requirements

Parameter	Specifications
Input voltage (per phase)	43 V _{AC} –255 V _{AC}
DC input voltage range	40 V _{DC} –623 V _{DC}
Output voltage	12 V
Maximum output current	1 A

1.2 Dimensions

The dimensions of the two-layer board are 180.7 mm × 50.5 mm. The copper thickness is 35 µm on each layer.

2 Testing and Results

2.1 Efficiency

The efficiency graph is shown in the following image.

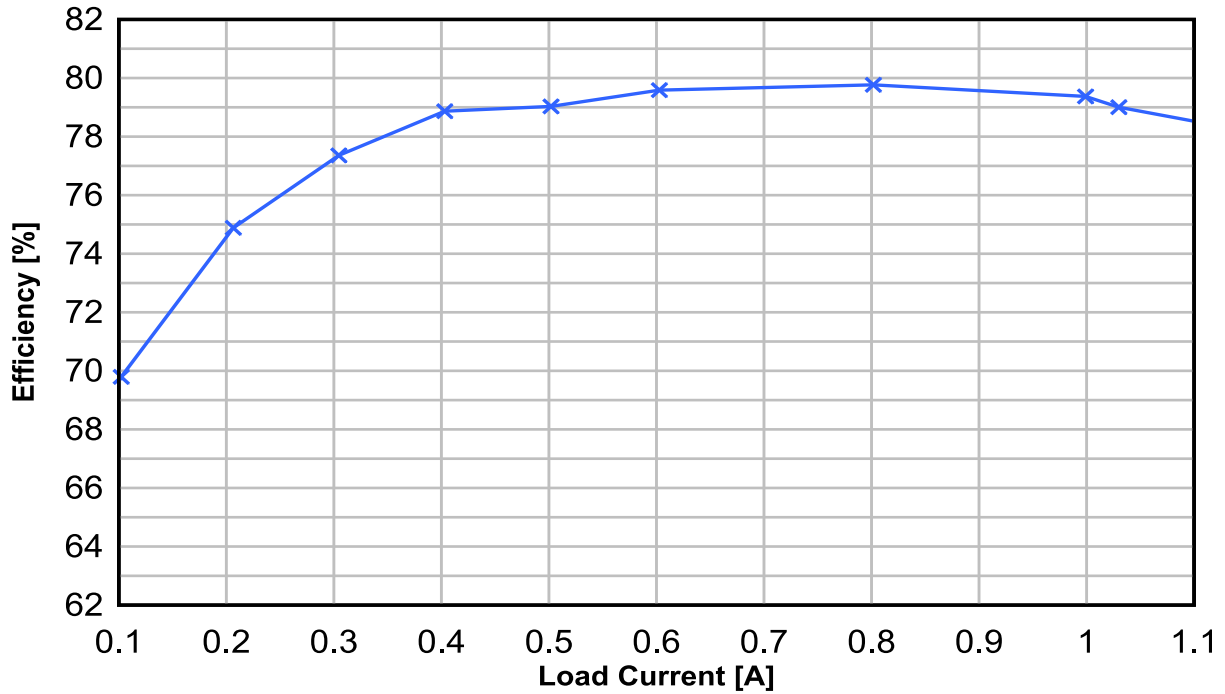


Figure 2-1. Efficiency vs Load Current at 230-V_{AC} Input Voltage

2.2 Standby Power

The following information shows standby power data:

110 V_{AC} input = 270 mW

230 V_{AC} input = 450 mW

2.3 Load Regulation

The load regulation graph is illustrated in the following image.

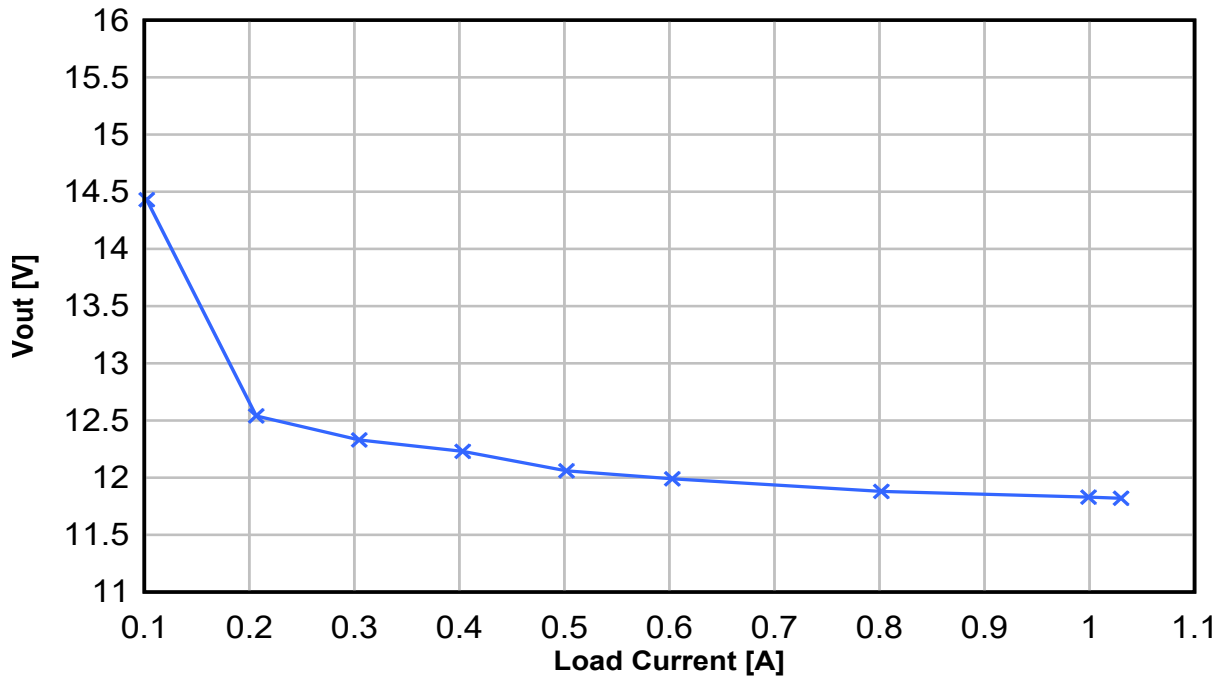


Figure 2-2. Load Current vs V_{OUT} at 230- V_{AC} Input Voltage

2.4 Line Regulation

The line regulation graph is illustrated in the following graph.

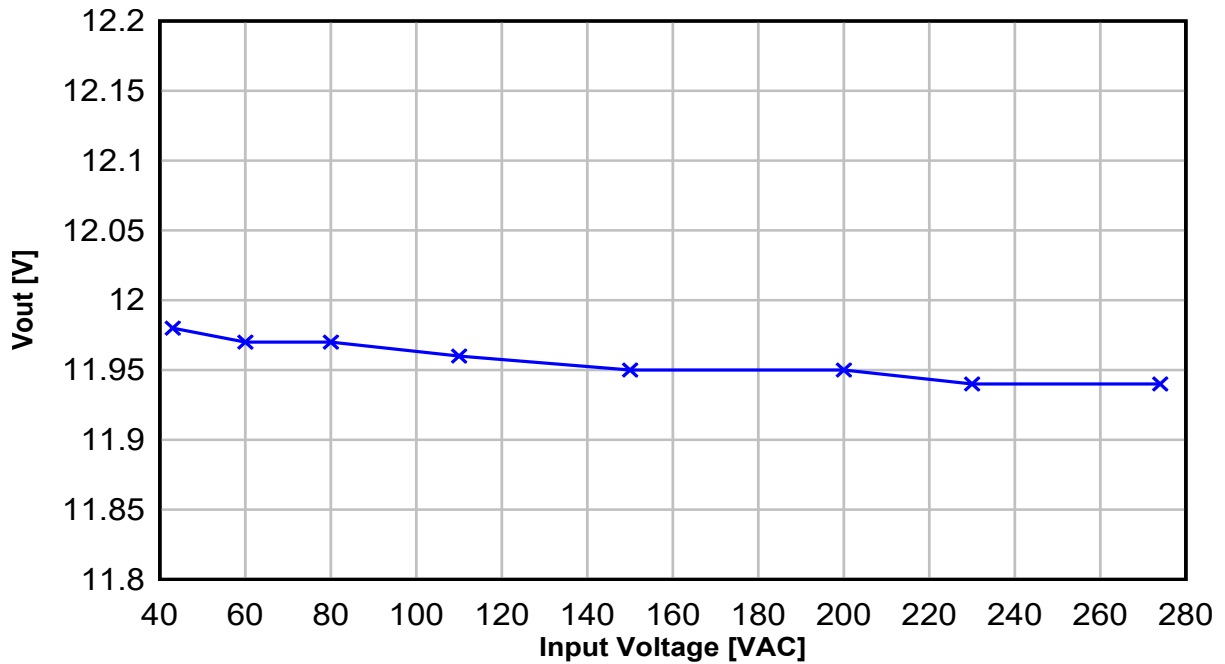


Figure 2-3. Input Voltage vs V_{OUT} at Full Load

2.5 Thermal Images

Figure 2-4 and Figure 2-5 show the thermal images.

2.5.1 43 V_{AC} Input Voltage

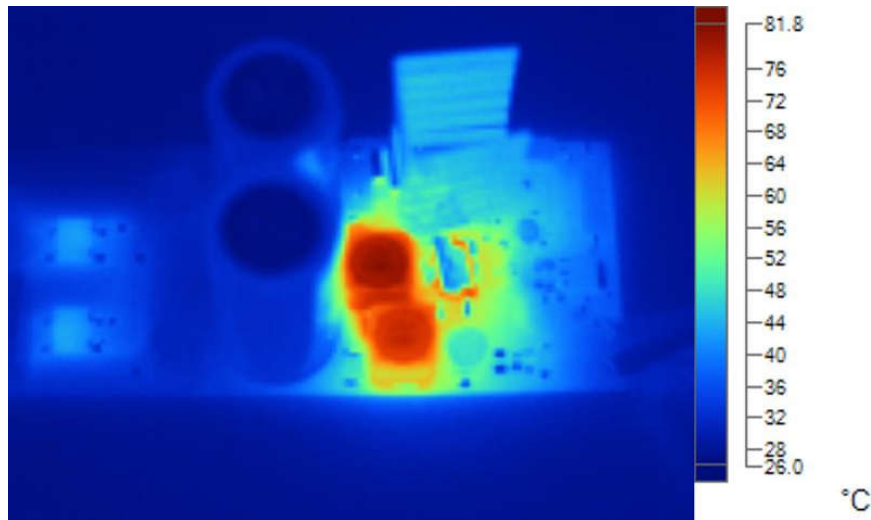


Figure 2-4. Thermal Image at 43-V_{AC} Input Voltage and Full Load

2.5.2 274 V_{AC} Input Voltage

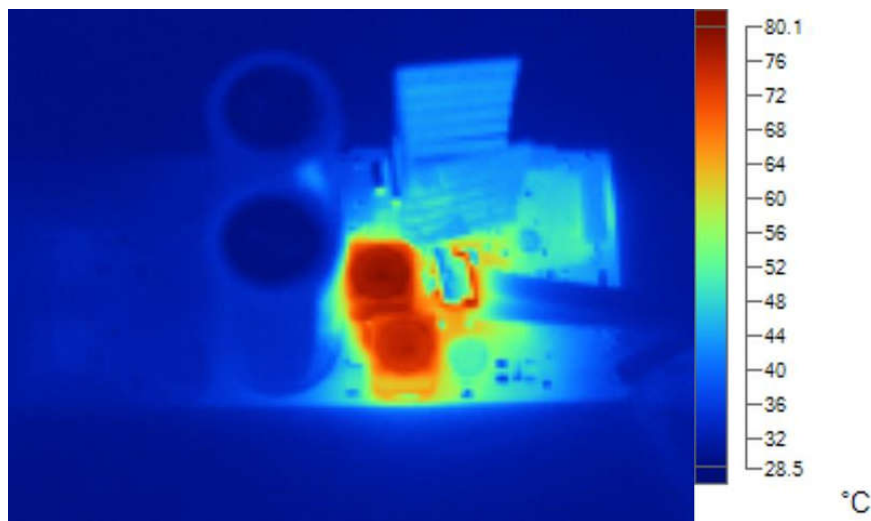


Figure 2-5. Thermal Image at 274-V_{AC} Input Voltage and Full Load

2.6 Bode Plots

Bode plot is shown in the following figure.

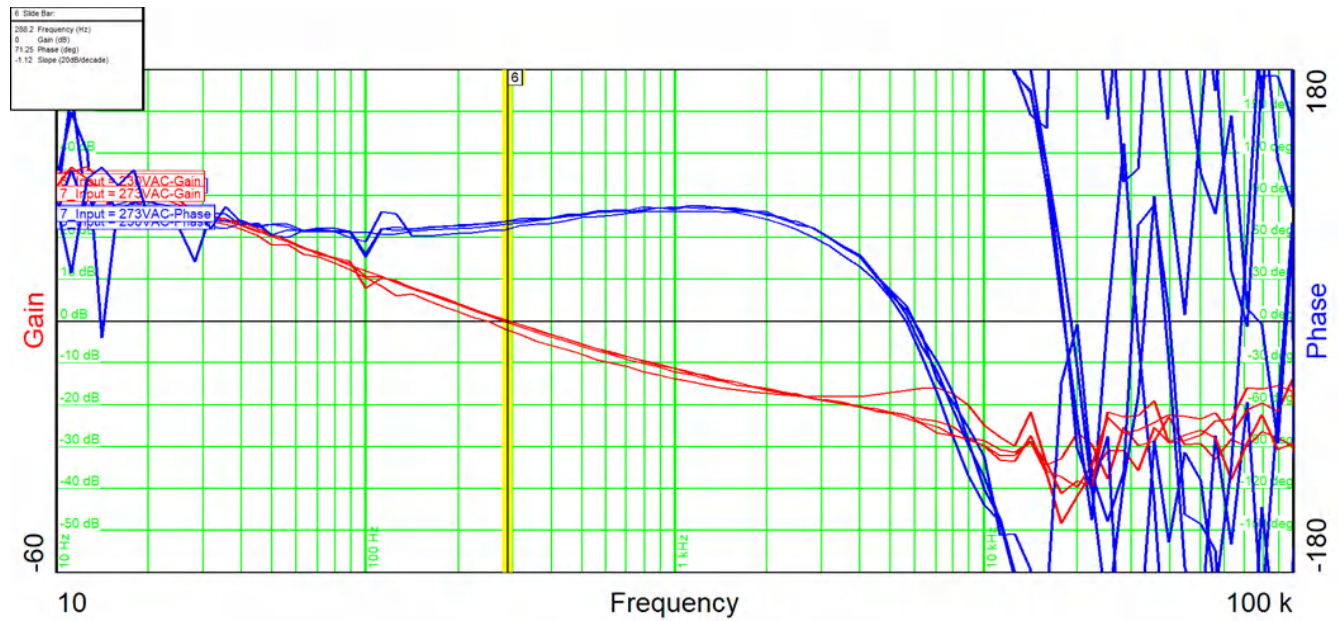


Figure 2-6. Bode Plot

Input voltage	43 V _{AC}	110 V _{AC}	230 V _{AC}
Load current	1 A	1 A	1 A
Phase margin	64° (deg)	69° (deg)	71° (deg)
Gain margin	> 15 dB	> 20 dB	> 20 dB
Bandwidth	245 Hz	279 Hz	288 Hz

3 Waveforms

3.1 Switch Node Voltage

3.1.1 40 V_{DC} Input Voltage

Figure 3-1 through Figure 3-3 show 40-V_{DC} input voltage waveforms at various load conditions.

3.1.1.1 No Load

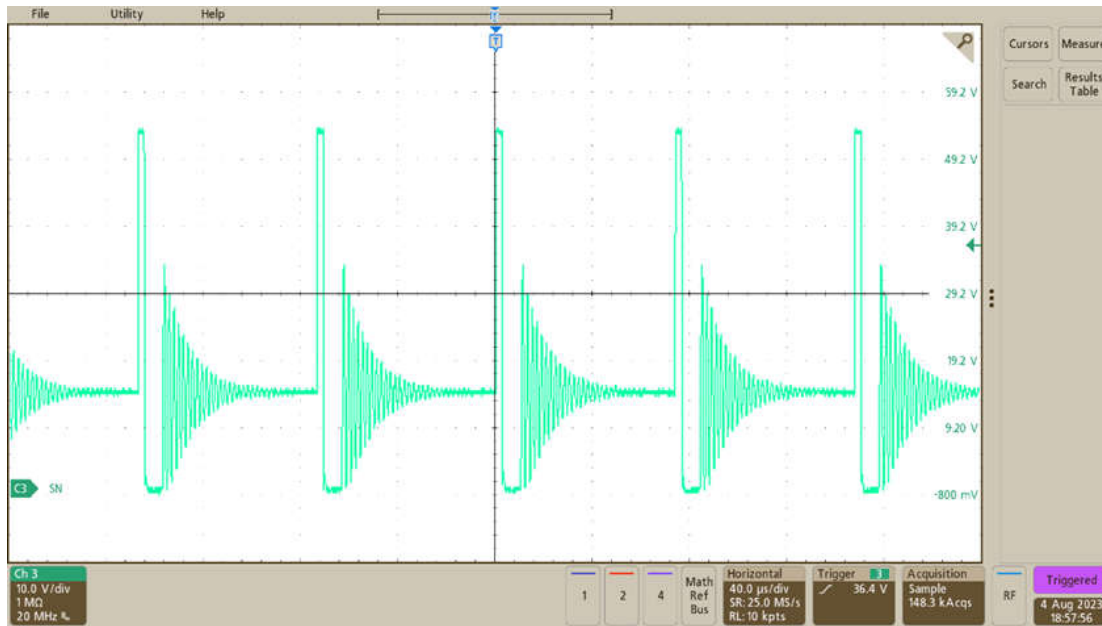


Figure 3-1. Switching 40-V_{DC} Input Voltage; No Load

3.1.1.2 100-mA Load Current

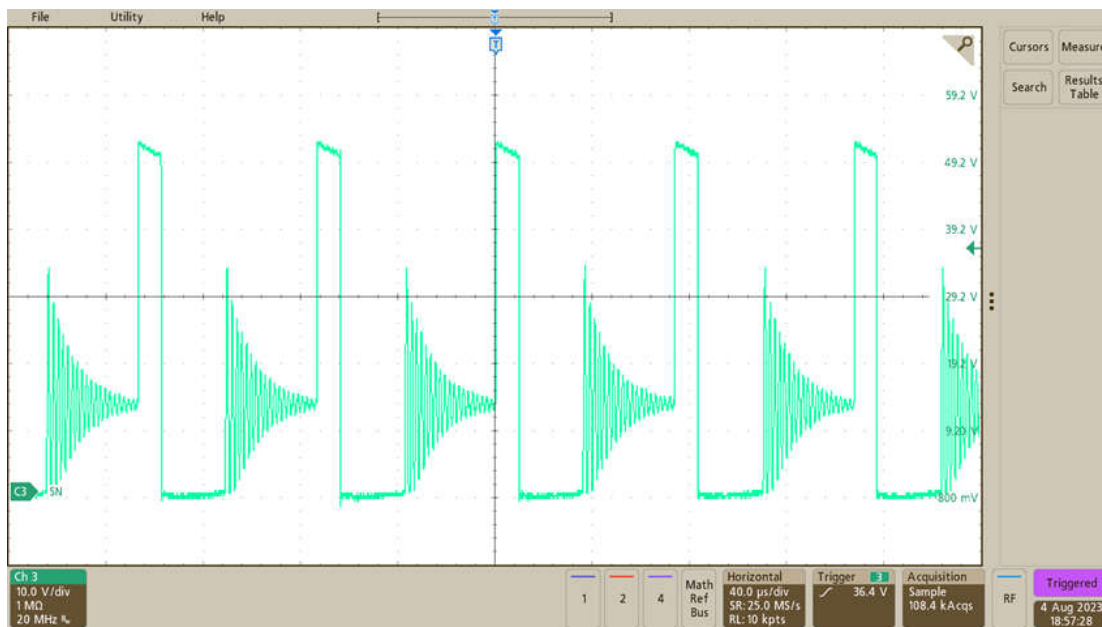


Figure 3-2. Switching 40-V_{DC} Input Voltage; 100-mA Load Current

3.1.1.3 1-A Load Current

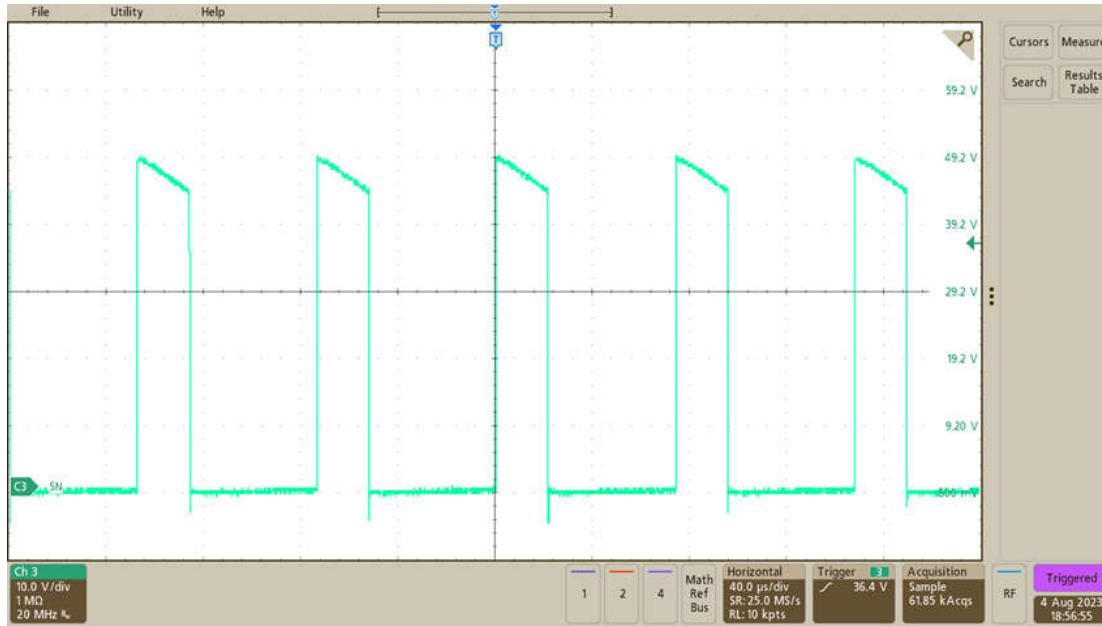


Figure 3-3. Switching 40-VDC Input Voltage; 1-A Load Current

3.1.2 630-V_{DC} Input Voltage

Figure 3-4 through Figure 3-9 show 630-V_{DC} input voltage waveforms.

3.1.2.1 No Load

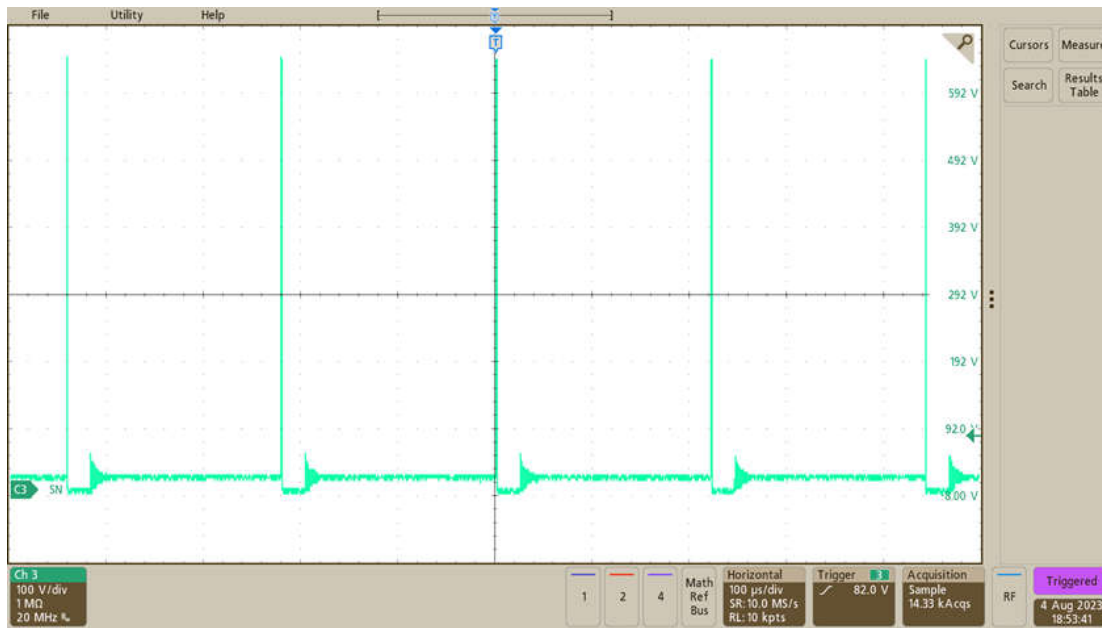


Figure 3-4. Switching at 630-V_{DC} Input Voltage; No Load; 100 μs / div

The waveform in Figure 3-5 displays the same measurement as in Figure 3-4 with a different time scale.

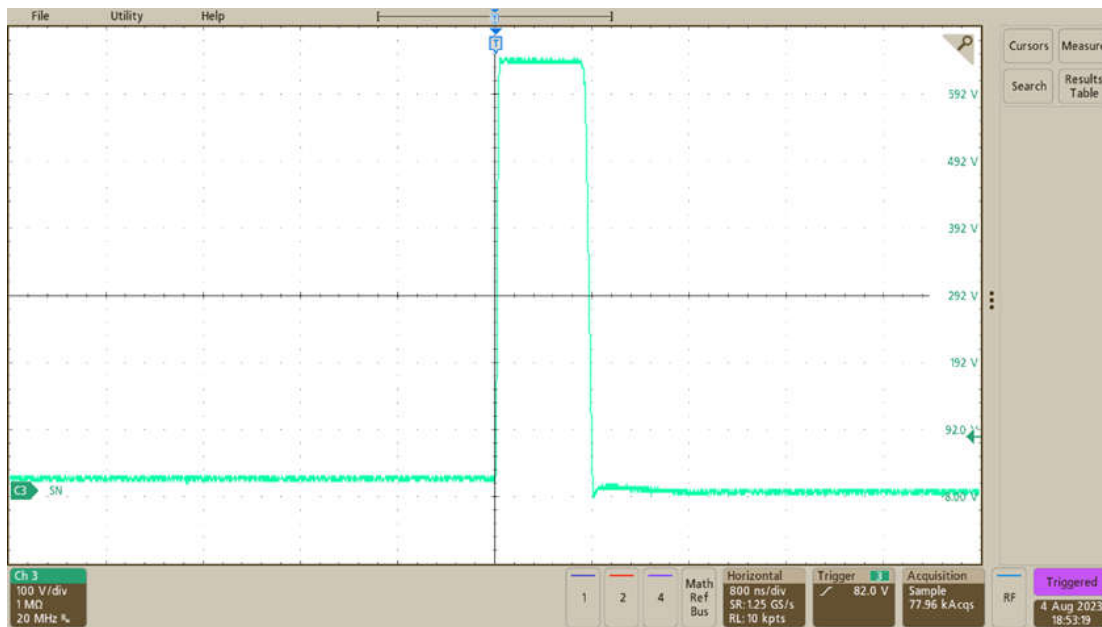


Figure 3-5. Switching at 630-V_{DC} Input Voltage; No Load; 800 ns / div

3.1.2.2 500-mA Load Current

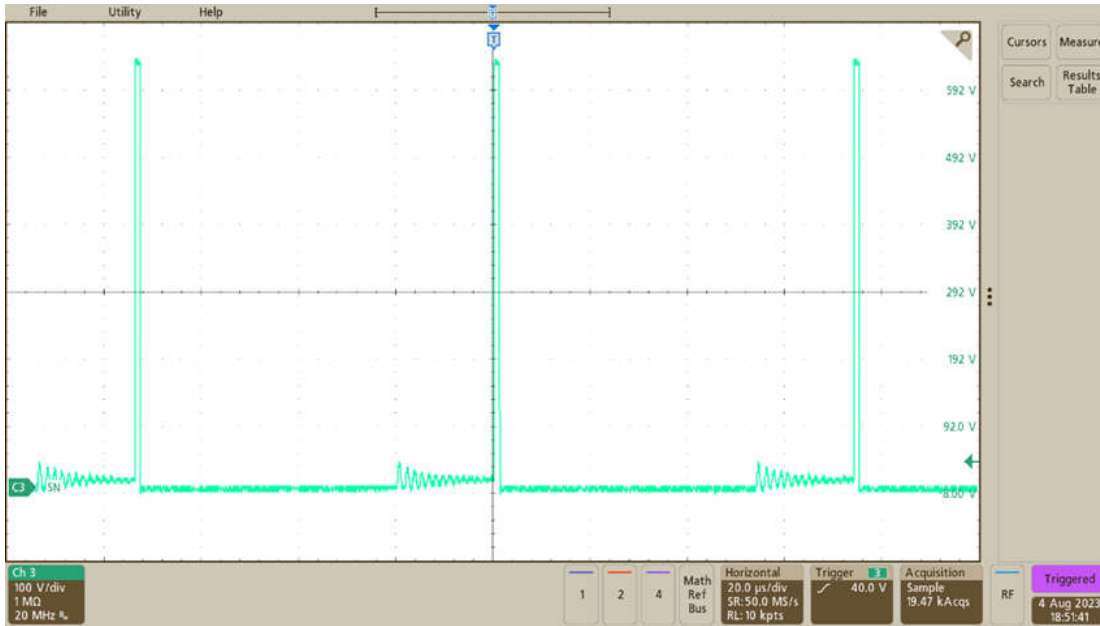


Figure 3-6. Switching at 630- V_{DC} Input Voltage; 500-mA Load Current; 20 μ s / div

The waveform in [Figure 3-7](#) displays the same measurement as in [Figure 3-6](#) with a different time scale.

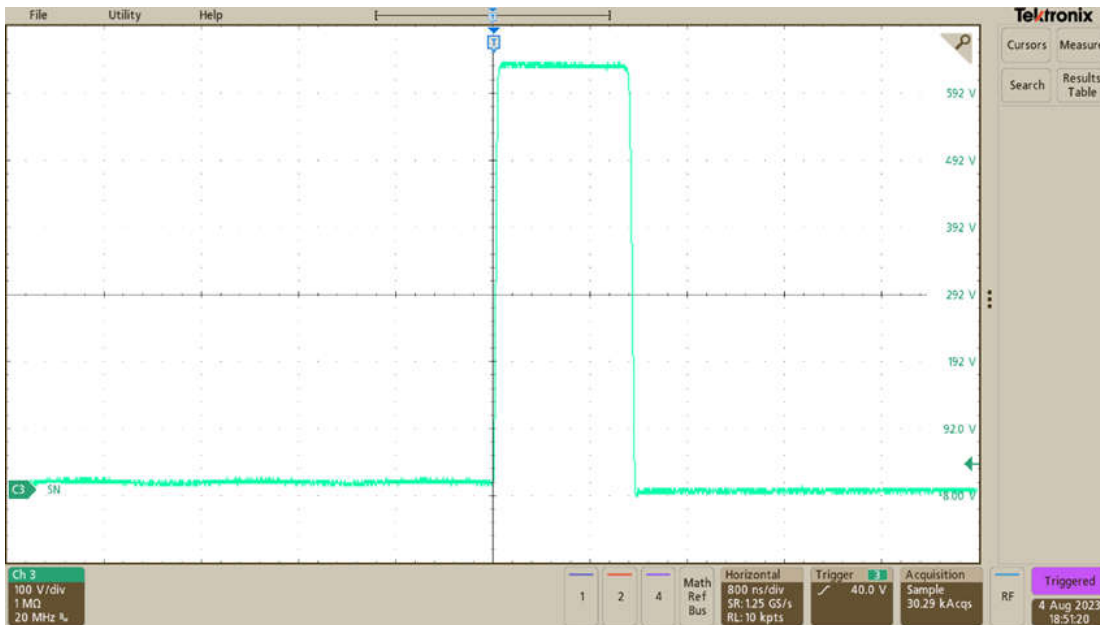


Figure 3-7. Switching at 630- V_{DC} Input Voltage; 500-mA Load Current; 800 ns / div

3.1.2.3 1-A Load Current

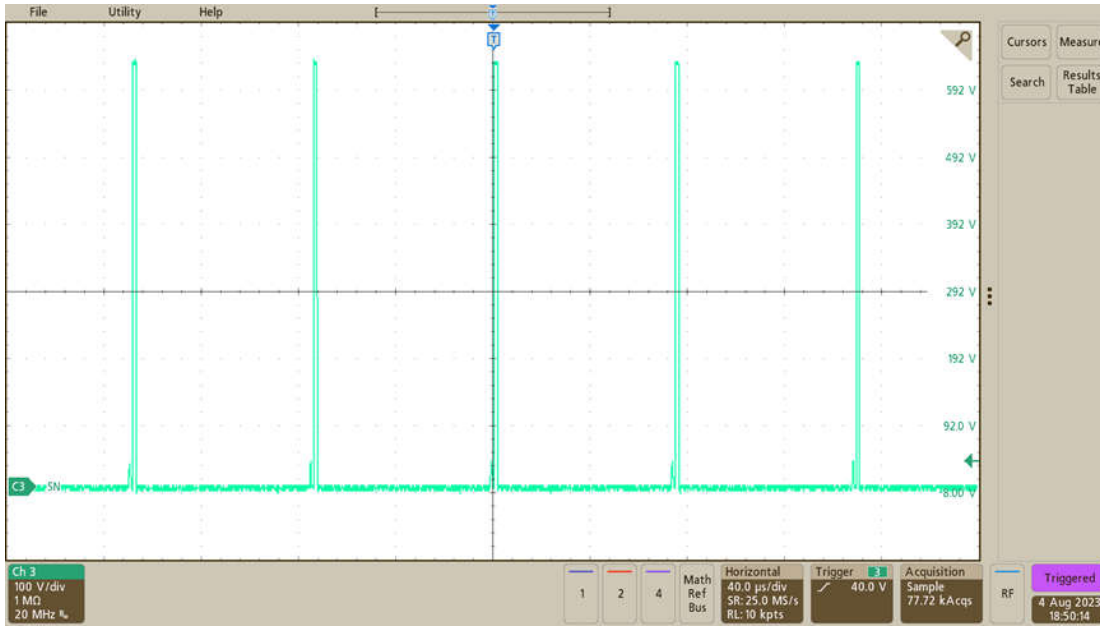


Figure 3-8. Switching at 630- V_{DC} Input Voltage; 1-A Load Current; 20 μ s / div

The waveform in [Figure 3-9](#) displays the same measurement as in [Figure 3-8](#) with a different time scale.

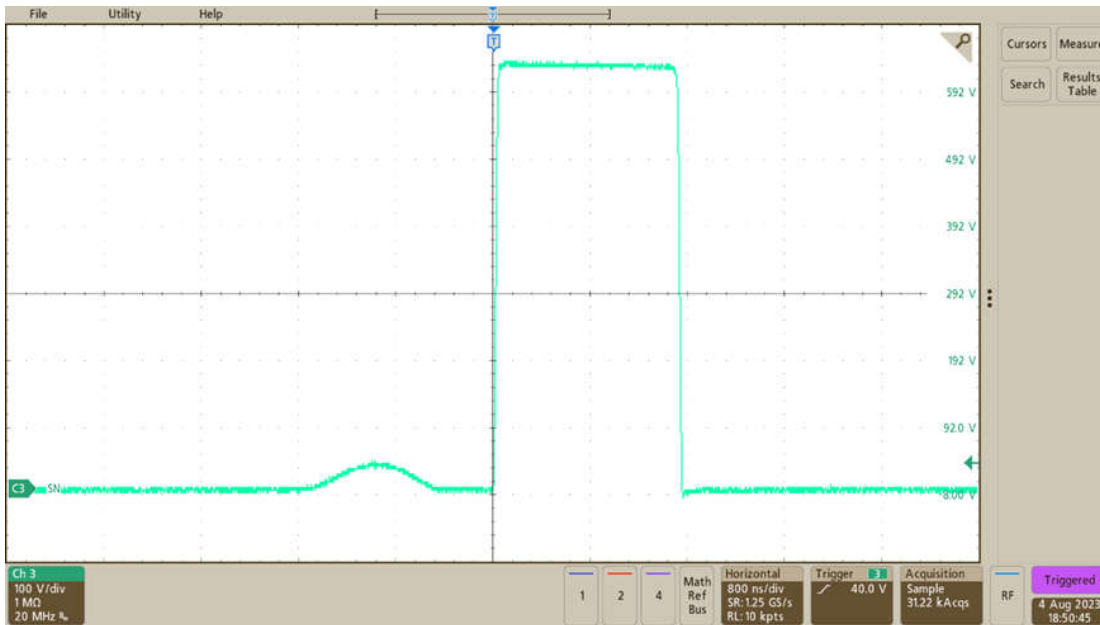


Figure 3-9. Switching at 630- V_{DC} Input Voltage; 1-A Load Current; 800 ns / div

3.2 Output Voltage Ripple

Figure 3-10 through Figure 3-12 show the output voltage ripple waveforms.

3.2.1 40-V_{DC} Input Voltage

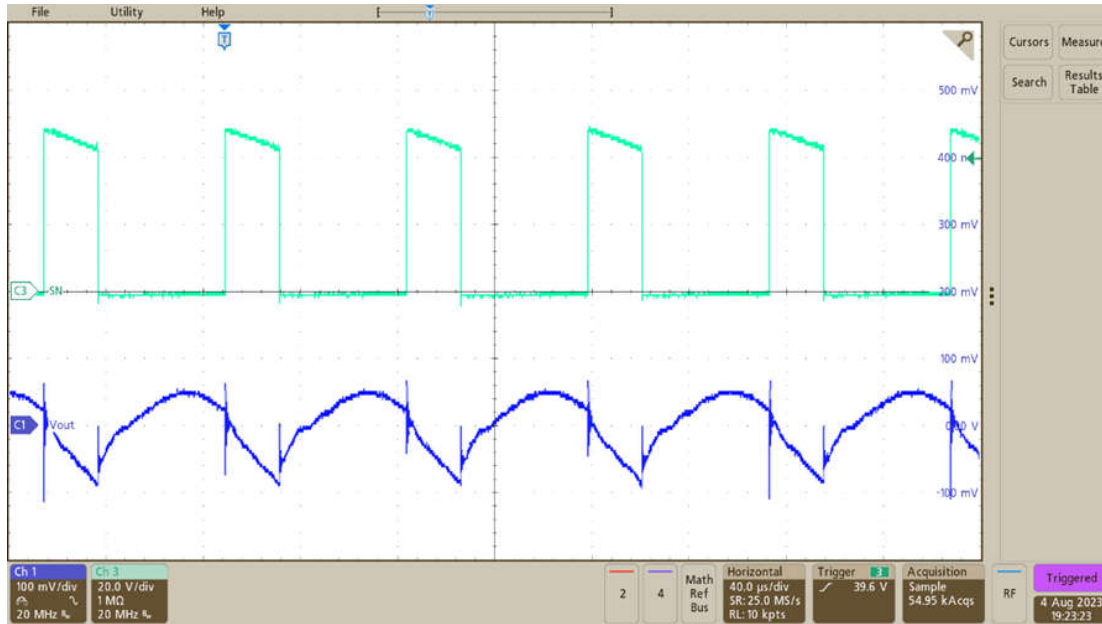


Figure 3-10. Output Voltage Ripple at 40-V_{DC} Input Voltage; Full Load

3.2.2 325-V_{DC} Input Voltage

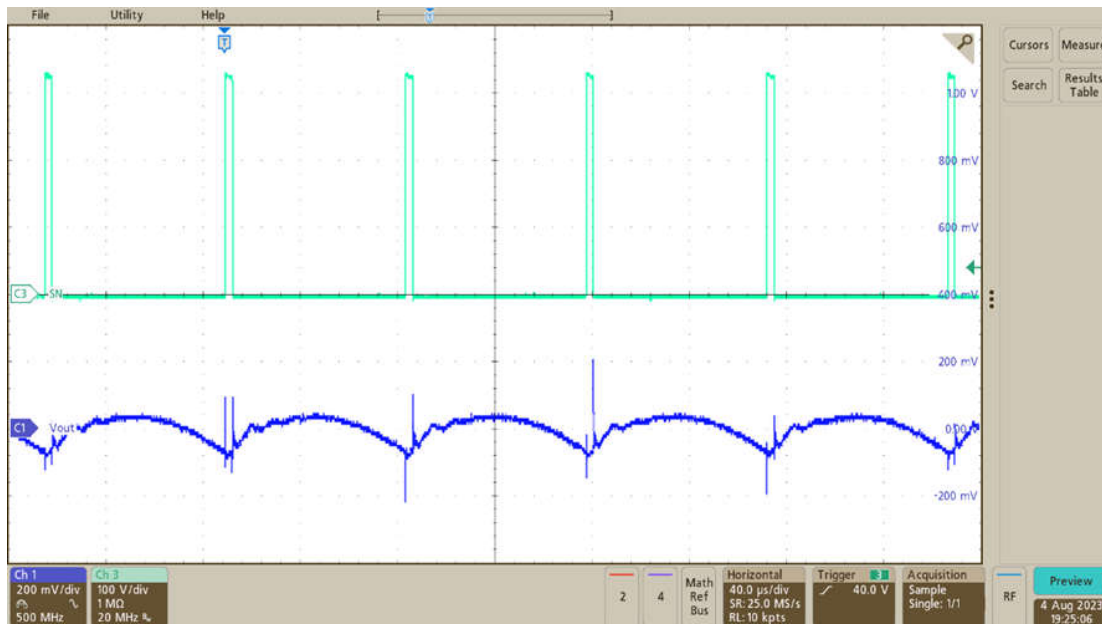


Figure 3-11. Output Voltage Ripple at 325-V_{DC} Input Voltage; Full Load

3.2.3 630 V_{DC} Input Voltage

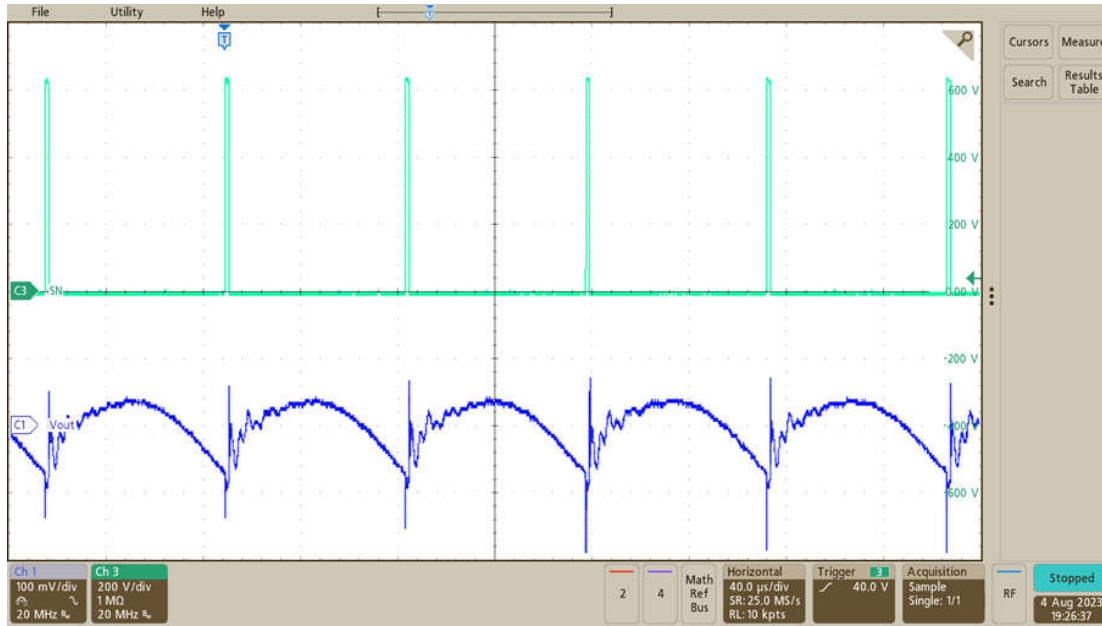


Figure 3-12. Output Voltage Ripple at 630-V_{DC} Input Voltage; Full Load

3.3 Input Voltage Ripple

The input voltage waveform is shown in the following image.

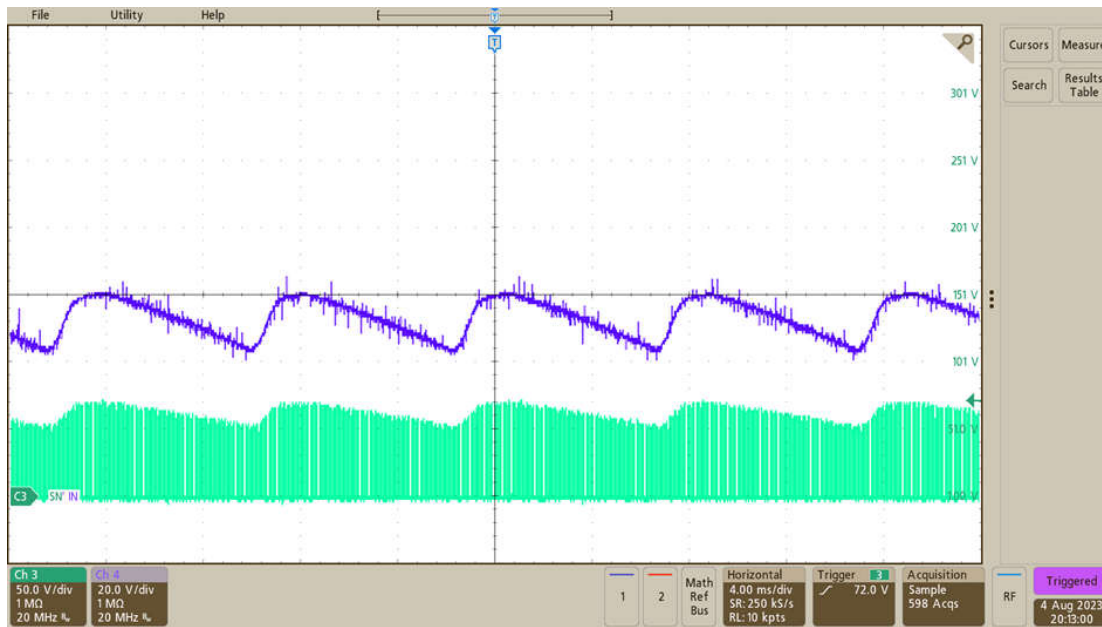


Figure 3-13. Input Voltage Ripple With 43-V_{AC}; 1-A Load Current

3.4 Load Transients

Figure 3-14 through Figure 3-16 illustrate the load transient waveforms.

3.4.1 40-V_{DC} Input Voltage

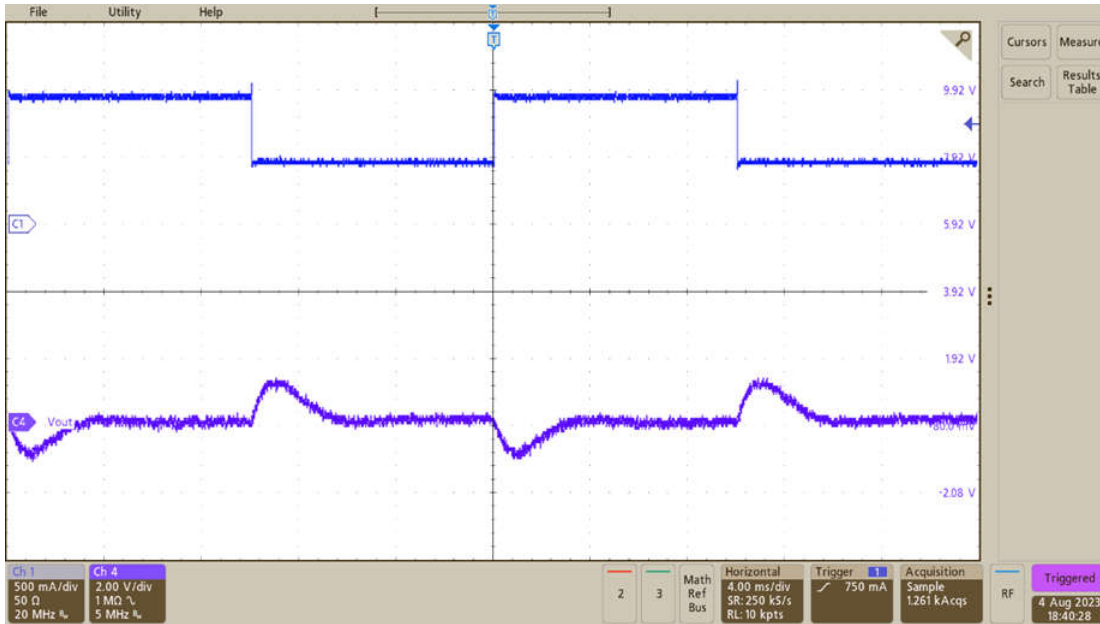


Figure 3-14. Load Transient at 40-V_{DC} Input Voltage; 500-mA to 1-A Load Step

3.4.2 325-V_{DC} Input Voltage

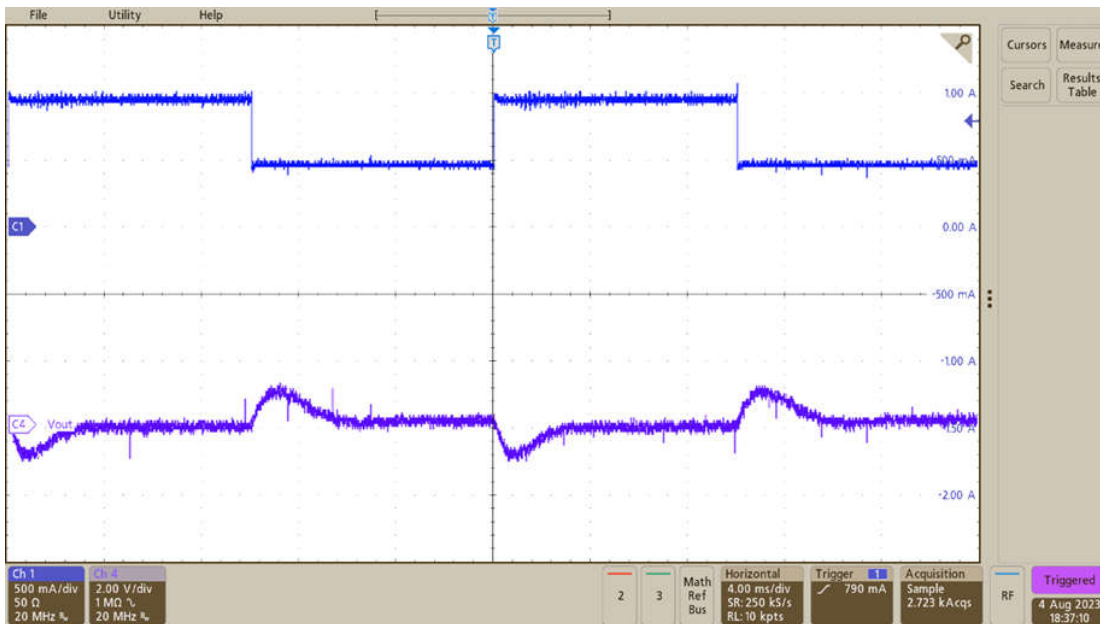


Figure 3-15. Load Transient at 325-V_{DC} Input Voltage; 500-mA to 1-A Load Step

3.4.3 630-V_{DC} Input Voltage

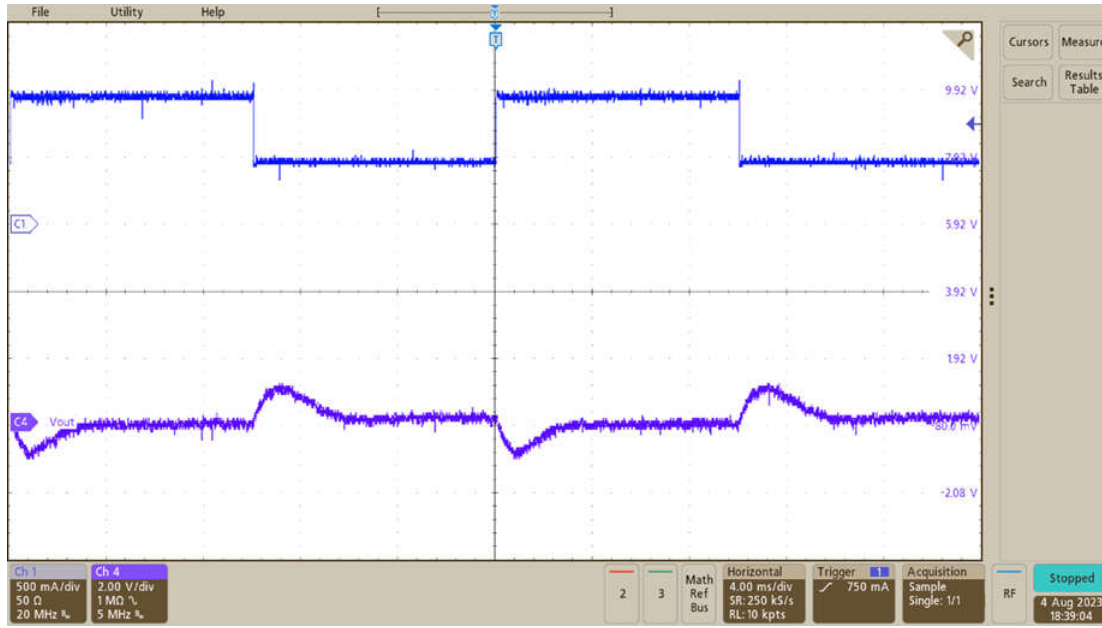


Figure 3-16. Load Transient at 630-V_{DC} Input Voltage; 500-mA to 1-A Load Step

3.5 Start-Up Sequence

3.5.1 With Load

Figure 3-17 and Figure 3-18 show the start-up sequence waveforms with a load.

3.5.1.1 43-V_{AC} Input Voltage

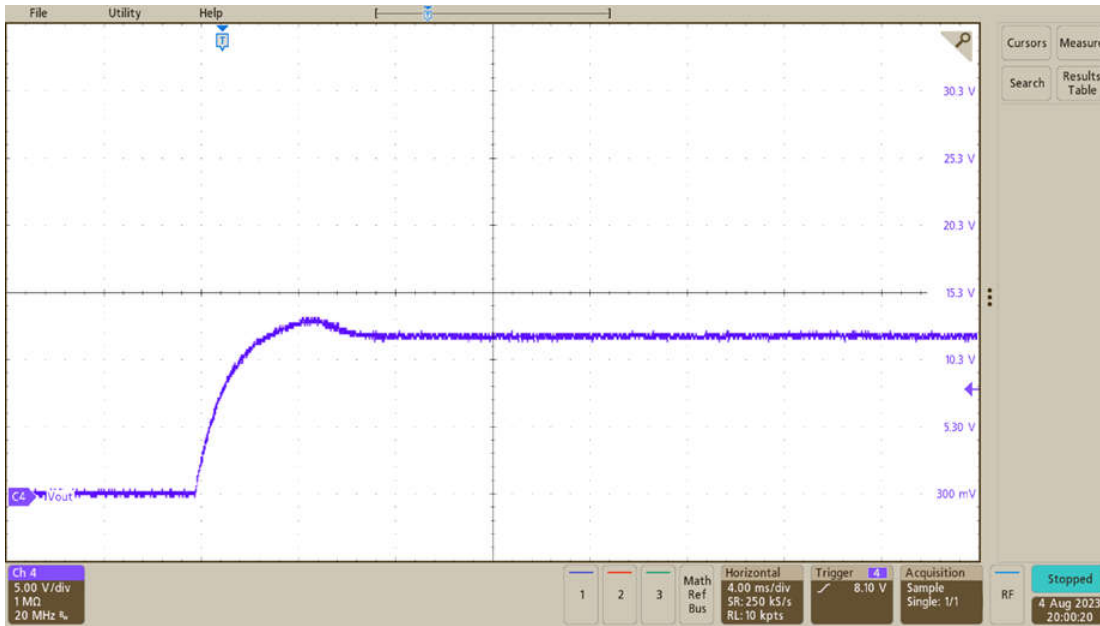


Figure 3-17. Start-up With 43-V_{AC} Input Voltage; 12-Ω Load Resistor

3.5.1.2 630-V_{DC} Input Voltage

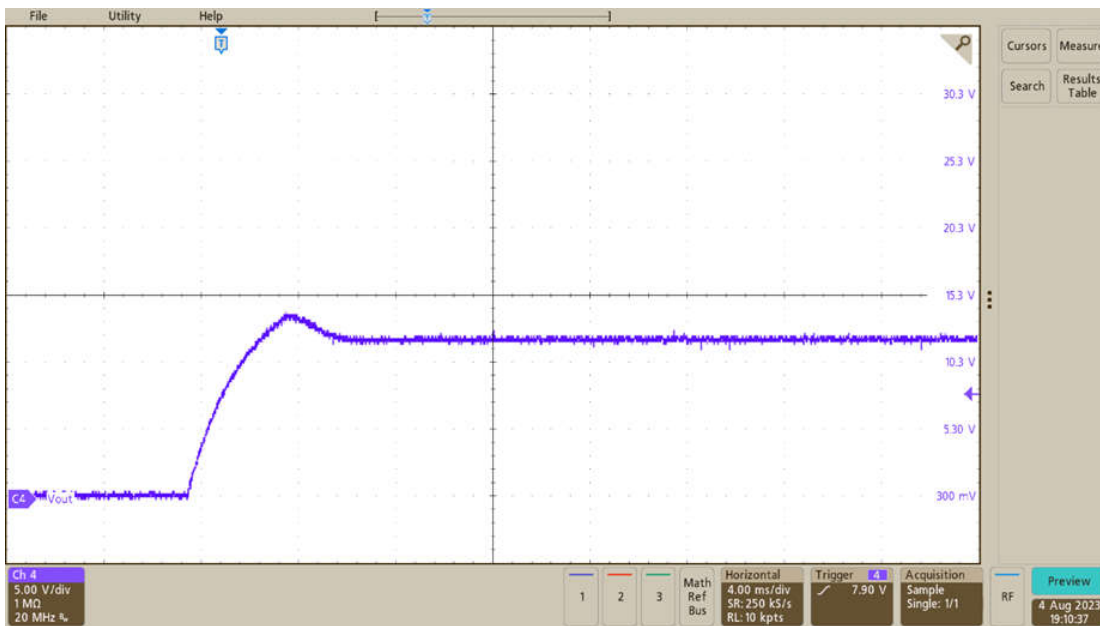


Figure 3-18. Start-up With 630-V_{DC} Input Voltage; 1-A Load Current

3.5.2 Without Load

Figure 3-19 and Figure 3-20 show the start-up sequence waveforms with no load.

3.5.2.1 40-V_{DC} Input Voltage

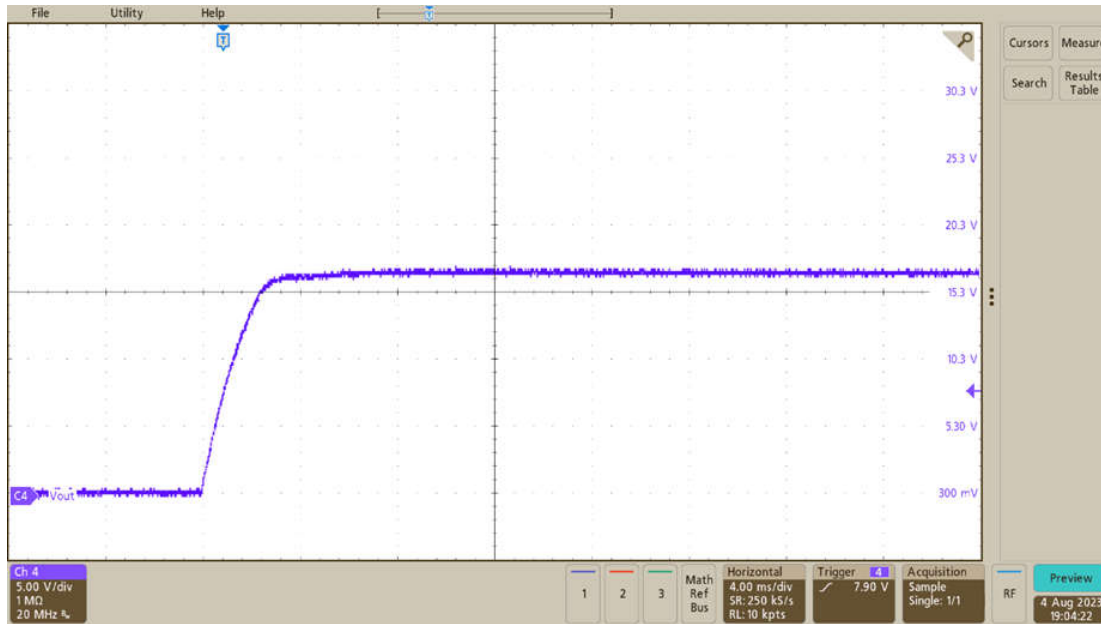


Figure 3-19. Start-up With 40-V_{DC} Input Voltage; No Load

3.5.2.2 630-V_{DC} Input Voltage

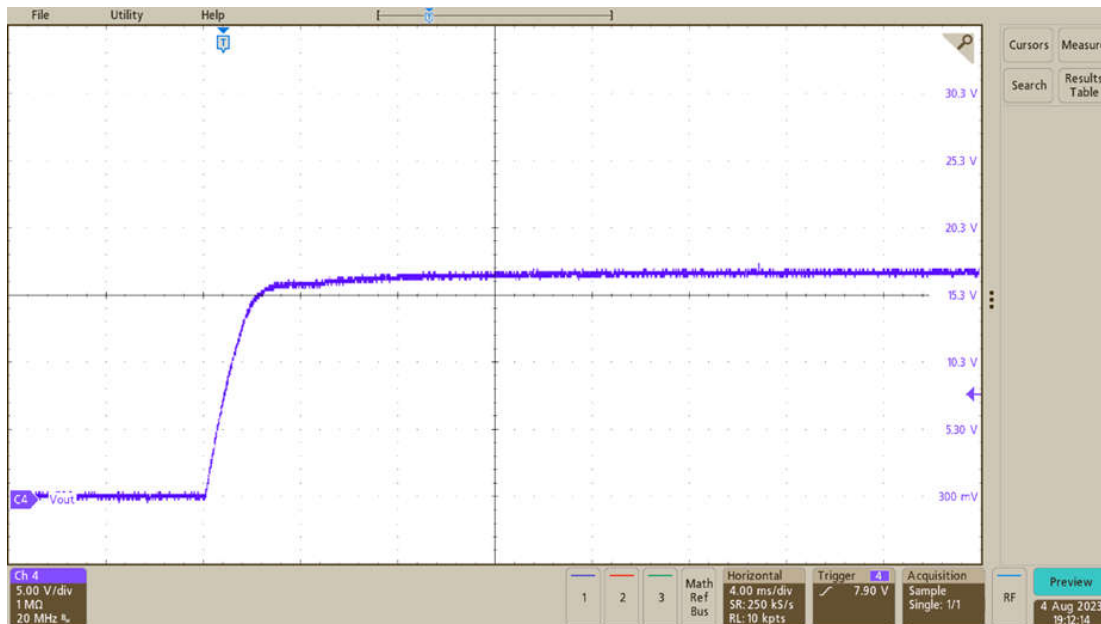


Figure 3-20. Start-up With 630-V_{DC} Input Voltage; No Load

IMPORTANT NOTICE AND DISCLAIMER

TI PROVIDES TECHNICAL AND RELIABILITY DATA (INCLUDING DATA SHEETS), DESIGN RESOURCES (INCLUDING REFERENCE DESIGNS), APPLICATION OR OTHER DESIGN ADVICE, WEB TOOLS, SAFETY INFORMATION, AND OTHER RESOURCES "AS IS" AND WITH ALL FAULTS, AND DISCLAIMS ALL WARRANTIES, EXPRESS AND IMPLIED, INCLUDING WITHOUT LIMITATION ANY IMPLIED WARRANTIES OF MERCHANTABILITY, FITNESS FOR A PARTICULAR PURPOSE OR NON-INFRINGEMENT OF THIRD PARTY INTELLECTUAL PROPERTY RIGHTS.

These resources are intended for skilled developers designing with TI products. You are solely responsible for (1) selecting the appropriate TI products for your application, (2) designing, validating and testing your application, and (3) ensuring your application meets applicable standards, and any other safety, security, regulatory or other requirements.

These resources are subject to change without notice. TI grants you permission to use these resources only for development of an application that uses the TI products described in the resource. Other reproduction and display of these resources is prohibited. No license is granted to any other TI intellectual property right or to any third party intellectual property right. TI disclaims responsibility for, and you will fully indemnify TI and its representatives against, any claims, damages, costs, losses, and liabilities arising out of your use of these resources.

TI's products are provided subject to [TI's Terms of Sale](#) or other applicable terms available either on [ti.com](https://www.ti.com) or provided in conjunction with such TI products. TI's provision of these resources does not expand or otherwise alter TI's applicable warranties or warranty disclaimers for TI products.

TI objects to and rejects any additional or different terms you may have proposed.

Mailing Address: Texas Instruments, Post Office Box 655303, Dallas, Texas 75265
Copyright © 2023, Texas Instruments Incorporated