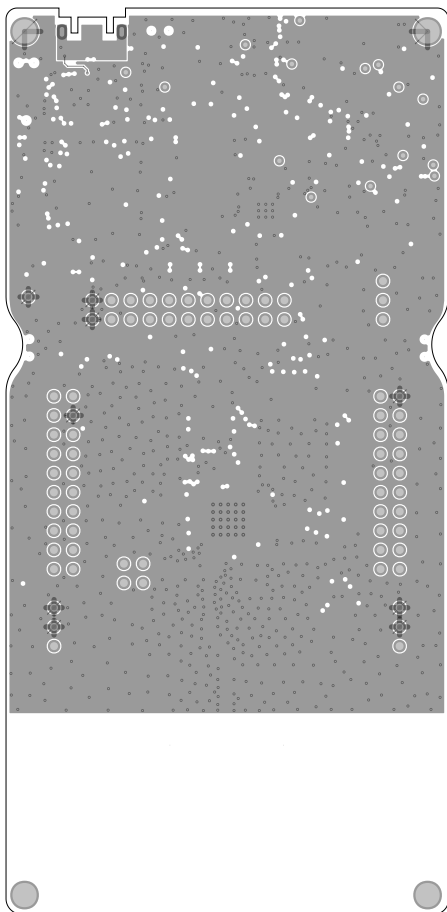


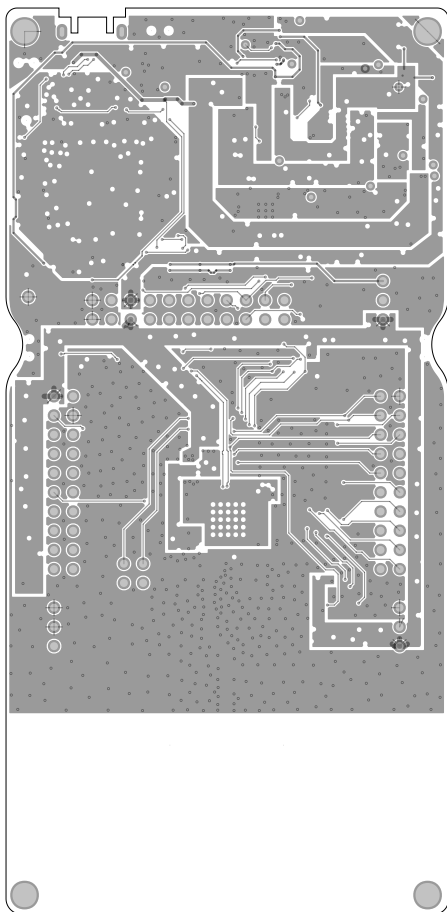
TIDA-010024

	TEXAS INSTRUMENTS	
	L1	LAUNCHXL-CC1312R1 B WCS042 B
	DATE: 2018-01-04	



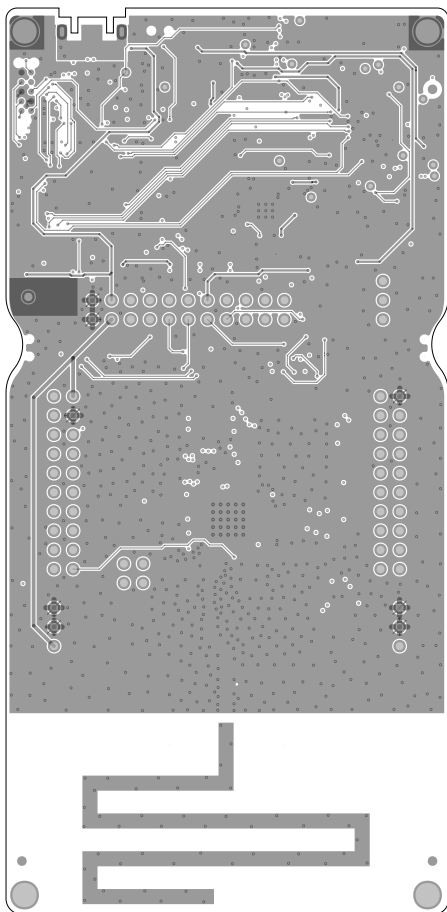
TIDA-010024

	TEXAS INSTRUMENTS	
	L2	LAUNCHXL-CC1312R1 B WCS042 B
	DATE: 2018-01-04	



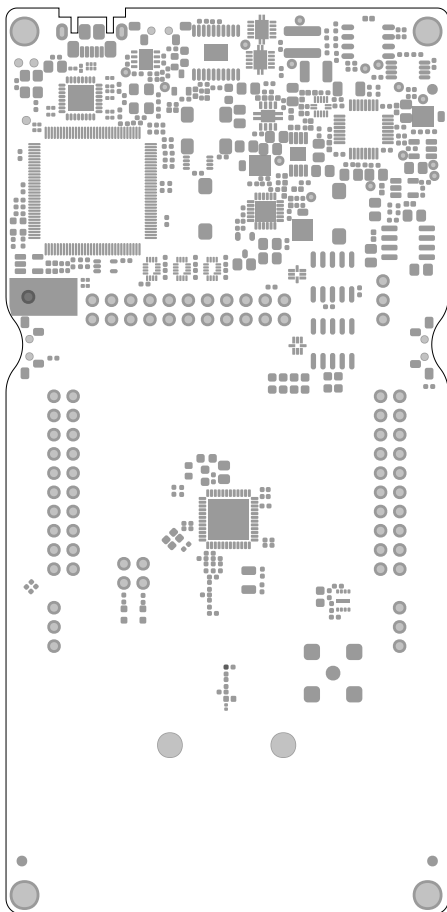
TIDA-010024

	TEXAS INSTRUMENTS	
	L3	LAUNCHXL-CC1312R1 B WCS042 B
	DATE: 2018-01-04	



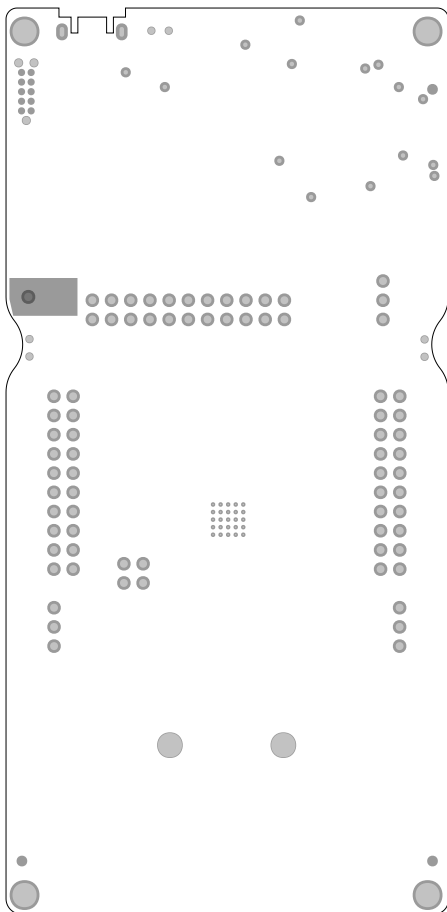
TIDA-010024

	TEXAS INSTRUMENTS	
	L4	LAUNCHXL-CC1312R1 B WCS042 B
	DATE: 2018-01-04	



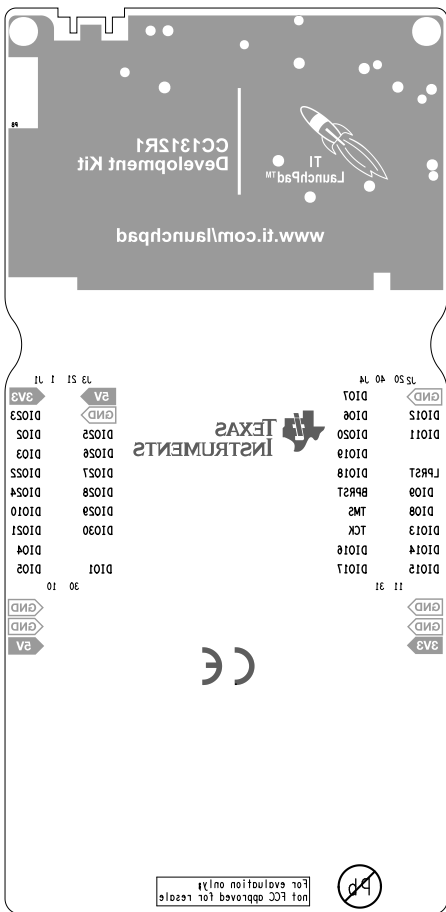
TIDA-010024

	TEXAS INSTRUMENTS	
	SM TOP	LAUNCHXL-CC1312R1 B WCS042 B
	DATE: 2018-01-04	



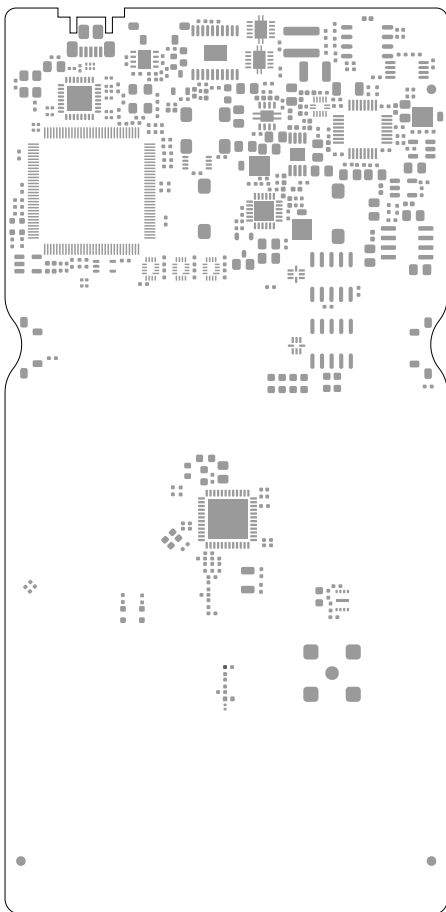
TIDA-010024

	TEXAS INSTRUMENTS	
	SM BOT	LAUNCHXL-CC1312R1 B WCS042 B
	DATE: 2018-01-04	



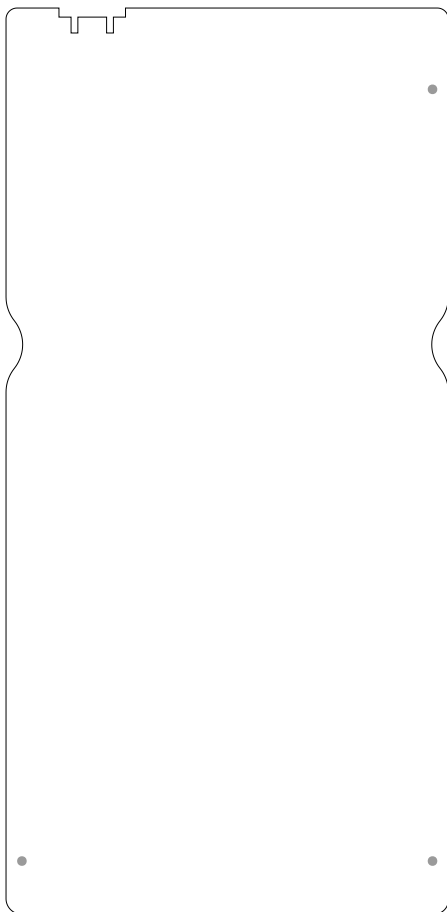
TIDA-010024

	TEXAS INSTRUMENTS	
	SILKBOT	LAUNCHXL-CC1312R1 B WCS042 B
	DATE: 2018-01-04	



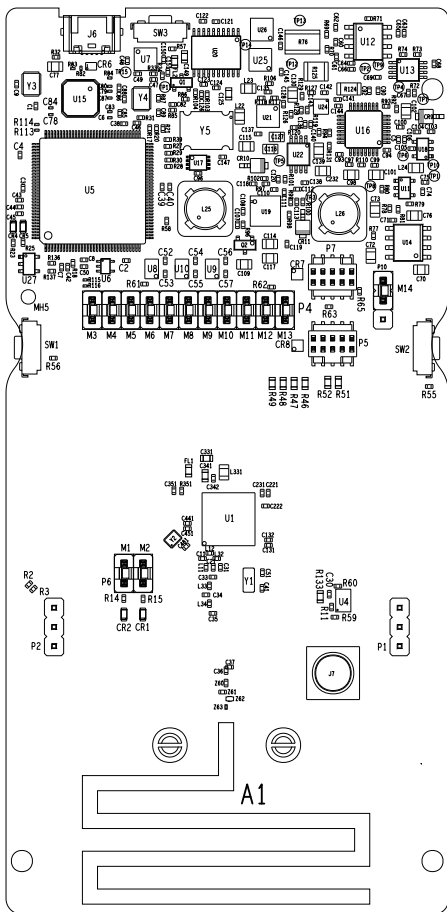
TIDA-010024

	TEXAS INSTRUMENTS	
	PM TOP	LAUNCHXL-CC1312R1 B WCS042 B
	DATE: 2018-01-04	



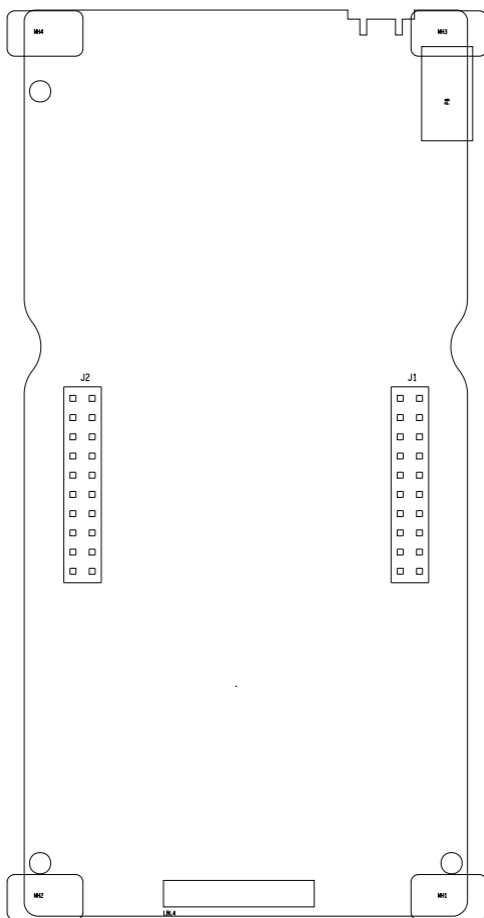
TIDA-010024

	TEXAS INSTRUMENTS	
	PM BOT	LAUNCHXL-CC1312R1 B WCS042 B
	DATE: 2018-01-04	

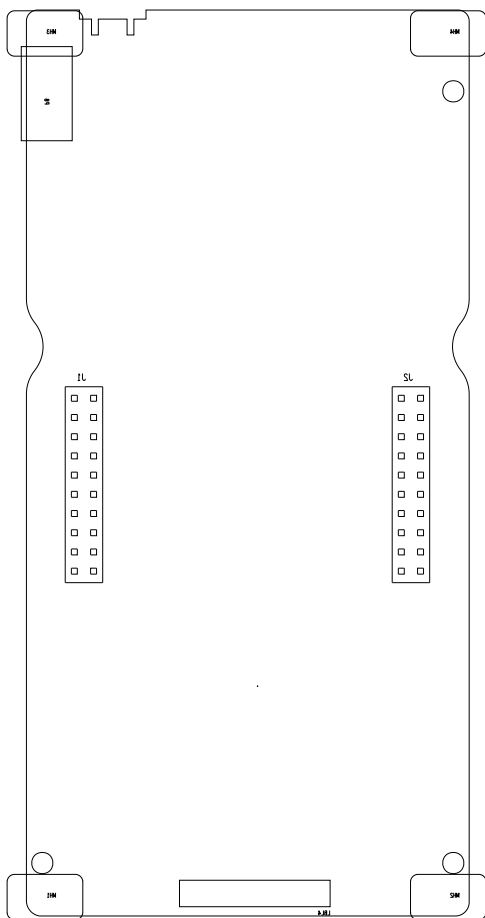


TIDA-010024

	TEXAS INSTRUMENTS	
	ASSYTOP	LAUNCHXL-CC1312R1 B WCS042 B
	DATE: 2018-01-04	



TIDA-010024



TIDA-010024

	TEXAS INSTRUMENTS	
	ASSYBOT	LAUNCHXL-CC1312R1 B WCS042 B
	DATE: 2018-01-04	

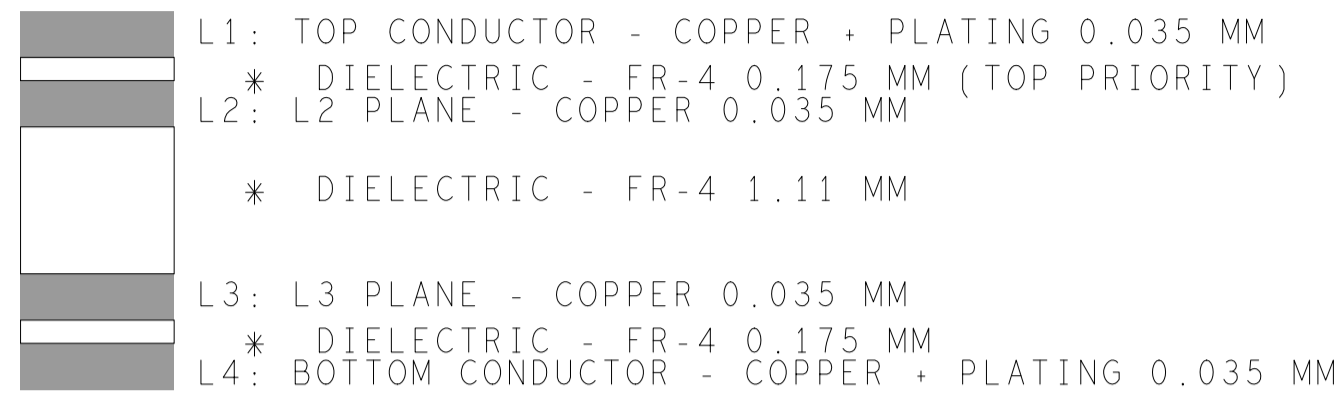
4

3

2

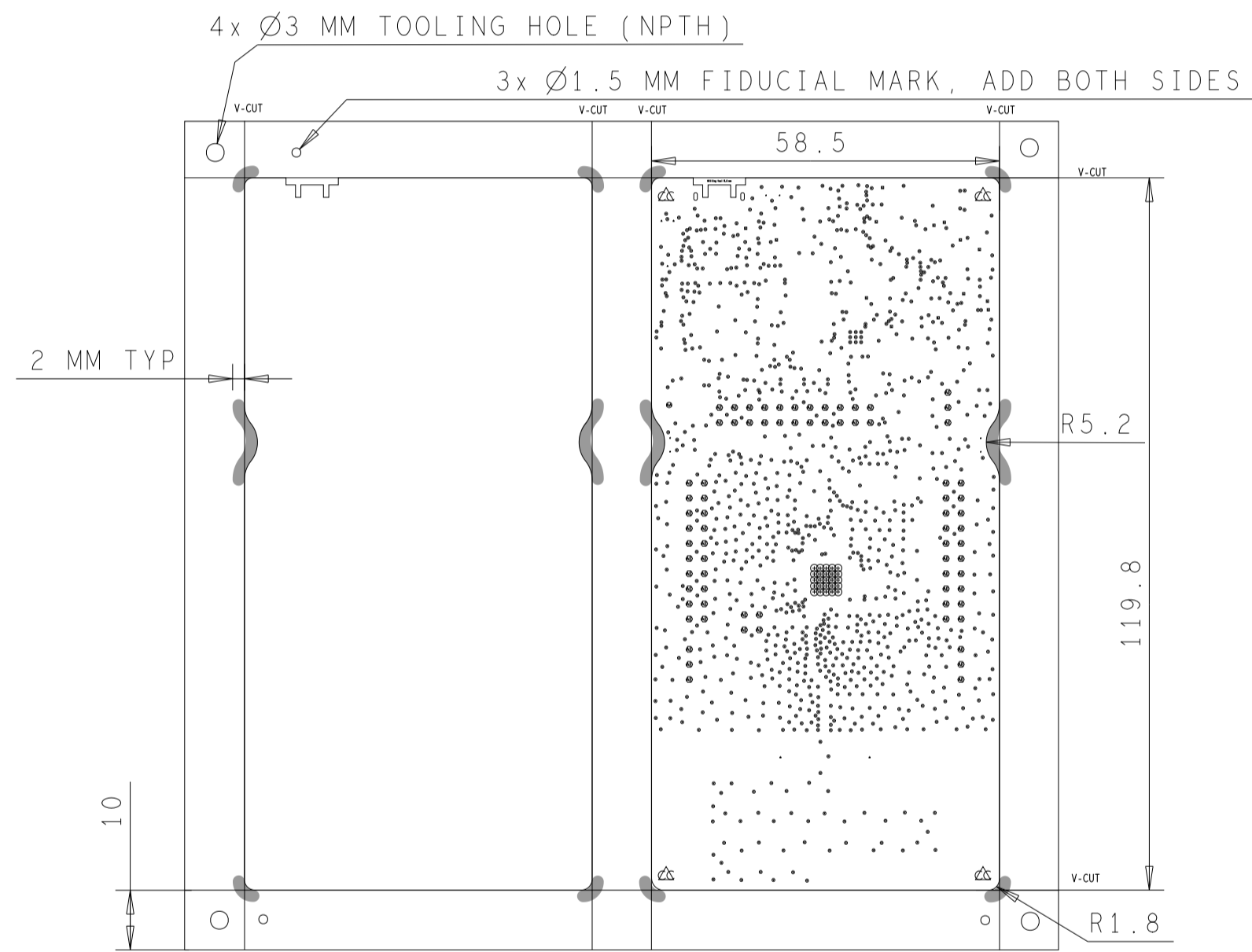
1

DESIGN CROSS SECTION CHART
TOTAL THICKNESS 1.6 MM



REVISIONS			
REV	DESCRIPTION	DATE	APPROVED
E1	INITIAL VERSION	2017-08-09	2017-08-09
A	Production Release Version	2017-10-20	2017-10-20
B	Production Release Version (Added DustBin Symbol)	2018-01-04	2018-01-04

PANEL DRAWING



DRILL CHART: TOP to BOTTOM				
ALL UNITS ARE IN MILLIMETERS				
FIGURE	FINISHED_SIZE	ROTATION	PLATED	QTY
•	0.2	-	PLATED	1076
◦	0.201	-	PLATED	25
•	0.6	-	PLATED	15
•	1.05	-	PLATED	75
•	1.1	-	PLATED	1
△	3.2	-	PLATED	4
•	0.899	-	NON-PLATED	6
•	1.0	-	NON-PLATED	3
•	3.2	-	NON-PLATED	2
◦	1.3x0.6	90.000	PLATED	2

TOTAL HOLES: 1209

TEXAS INSTRUMENTS
DRILL LAUNCHXL-CC1312R1 B WCS042 B
DATE: 2018-01-04

FAB NOTES:

- ALL DIMENSIONS ARE IN MM, UNLESS OTHERWISE NOTED.
- THE PWB SHALL BE FABRICATED TO IPC-6012, CLASS 2 AND WORKMANSHIP SHALL CONFORM TO IPC-A-600, CLASS 2, CURRENT REVISIONS.
- BOARD MATERIAL SHALL BE 180 Tg/340 Td ISOLA FR-370HR OR EQUIVALENT, RoHS COMPLIANT AND LEAD FREE ASSEMBLY CAPABLE. BOARD MATERIAL SHALL MEET OR EXCEED IPC-4101B, RoHS CERTIFICATE OF CONFORMANCE SHALL BE DELIVERED WITH EACH LOT.
- BOARD MATERIAL & CONSTRUCTION TO BE U.L. 94V-0 APPROVED AND MARKED ON THE FINISHED BOARD. UL GUIDE NUMBER SHOULD BE MARKED ON THE FINISHED BOARD.
- OVERALL BOARD THICKNESS TO BE 1.6 MM AND APPLIES AFTER ALL LAMINATION AND PLATING PROCESSES, MEASURED FROM COPPER TO COPPER.
- MAX. WARP & TWIST TO BE .0075 PER INCH.
- BOARD MUST BE ELECTRICALLY TESTED USING SUPPLIED IPC-D-358 NETLIST.
- 0.32MM TRACES ON LAYER 1 ARE 50 OHMS +/-10%. THEY ARE REFERENCE TO LAYER 2 GROUND

PROCESS NOTES:

- APPLY LPI SOLDERMASK OVER BARE COPPER (SMOBC), SOLDERMASK SHALL CONFORM TO IPC-SM-840, CLASS H, CURRENT REV. COLOR OF MASK TO BE RED.
- PLATE ALL EXPOSED AREAS WITH ELECTROLESS NICKEL IMMERSION GOLD. NICKEL:100 MICRO-INCHES MIN. GOLD:2-8 MICROINCHES MIN.
- SOLDERMASK ARTWORK HAS ZERO (0) OVERSIZED PADS. FABRICATION VENDOR IS ALLOWED TO ADJUST THE COMPONENT SOLDERMASK PADS TO MEET THEIR TOOLING REQUIREMENTS.
- APPLY NON-CONDUCTIVE LPI SILKSCREEN OR EQUIVALENT PER THE ARTWORK. COLOR: WHITE.
- ALL VIAS ARE TENTED.

TIDA-010024

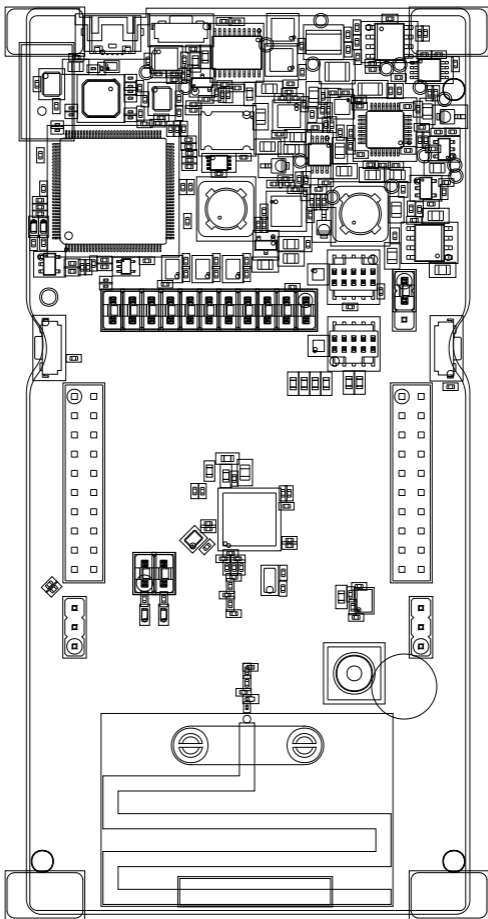
UNLESS OTHERWISE SPECIFIED	SIGNATURES	DATE	TEXAS INSTRUMENTS	
DIMENSIONS ARE IN MM	DRAWN PM	2018-01-04	FABRICATION DRAWING LAUNCHXL-CC1312R1 CC1312R LaunchPad WCS042 B	
	CHECKED TA	2018-01-04		
			SIZE	FSCM NO
			DWG NO	
			SCALE	NONE
			SHEET 1 OF 1	

4

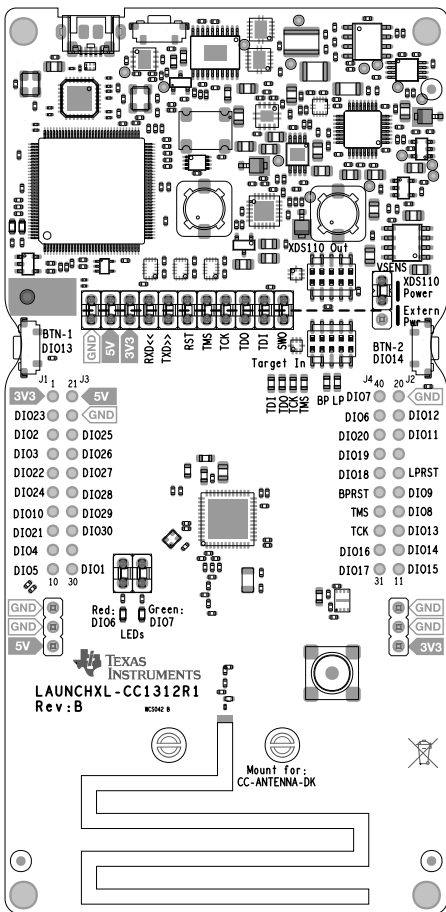
3

2

1



TIDA-010024



TIDA-010024

	TEXAS INSTRUMENTS	
	SILKTOP	LAUNCHXL-CC1312R1 B WCS042 B
	DATE: 2018-01-04	

IMPORTANT NOTICE AND DISCLAIMER

TI PROVIDES TECHNICAL AND RELIABILITY DATA (INCLUDING DATASHEETS), DESIGN RESOURCES (INCLUDING REFERENCE DESIGNS), APPLICATION OR OTHER DESIGN ADVICE, WEB TOOLS, SAFETY INFORMATION, AND OTHER RESOURCES "AS IS" AND WITH ALL FAULTS, AND DISCLAIMS ALL WARRANTIES, EXPRESS AND IMPLIED, INCLUDING WITHOUT LIMITATION ANY IMPLIED WARRANTIES OF MERCHANTABILITY, FITNESS FOR A PARTICULAR PURPOSE OR NON-INFRINGEMENT OF THIRD PARTY INTELLECTUAL PROPERTY RIGHTS.

These resources are intended for skilled developers designing with TI products. You are solely responsible for (1) selecting the appropriate TI products for your application, (2) designing, validating and testing your application, and (3) ensuring your application meets applicable standards, and any other safety, security, or other requirements. These resources are subject to change without notice. TI grants you permission to use these resources only for development of an application that uses the TI products described in the resource. Other reproduction and display of these resources is prohibited. No license is granted to any other TI intellectual property right or to any third party intellectual property right. TI disclaims responsibility for, and you will fully indemnify TI and its representatives against, any claims, damages, costs, losses, and liabilities arising out of your use of these resources.

TI's products are provided subject to TI's Terms of Sale (www.ti.com/legal/termsofsale.html) or other applicable terms available either on ti.com or provided in conjunction with such TI products. TI's provision of these resources does not expand or otherwise alter TI's applicable warranties or warranty disclaimers for TI products.

Mailing Address: Texas Instruments, Post Office Box 655303, Dallas, Texas 75265
Copyright © 2018, Texas Instruments Incorporated