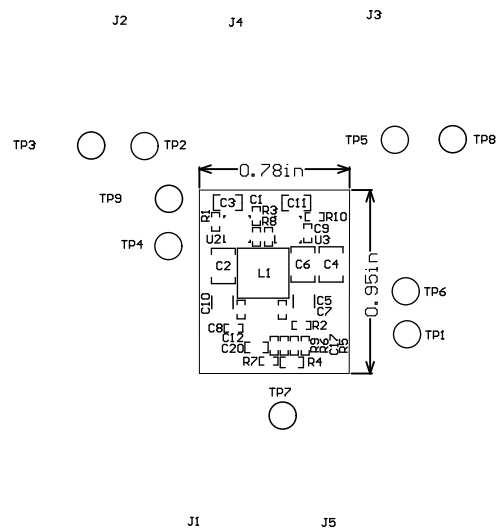
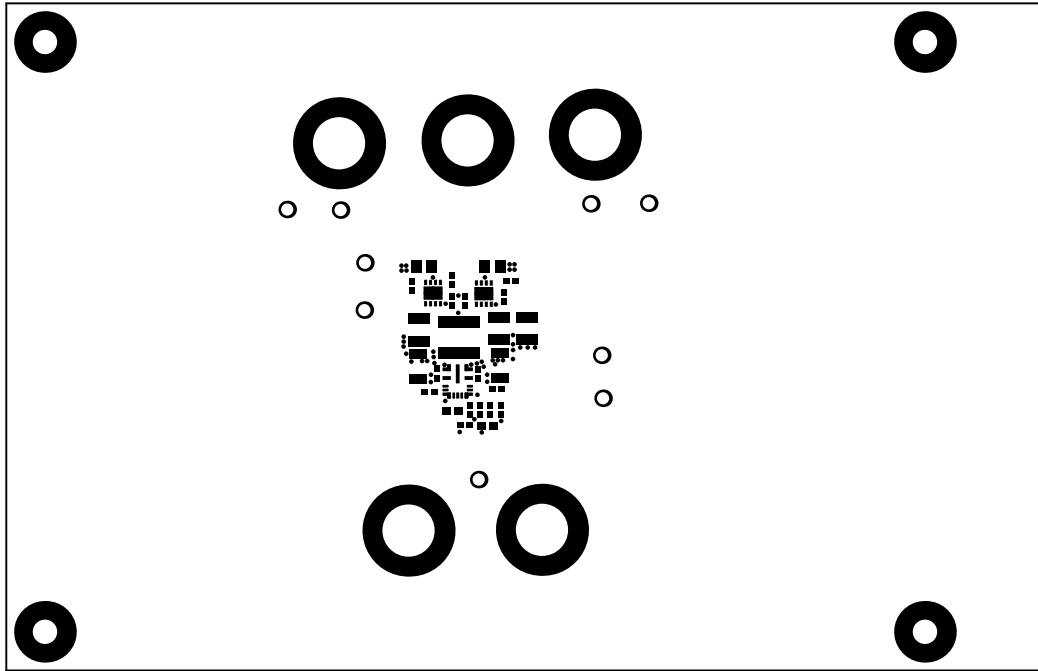


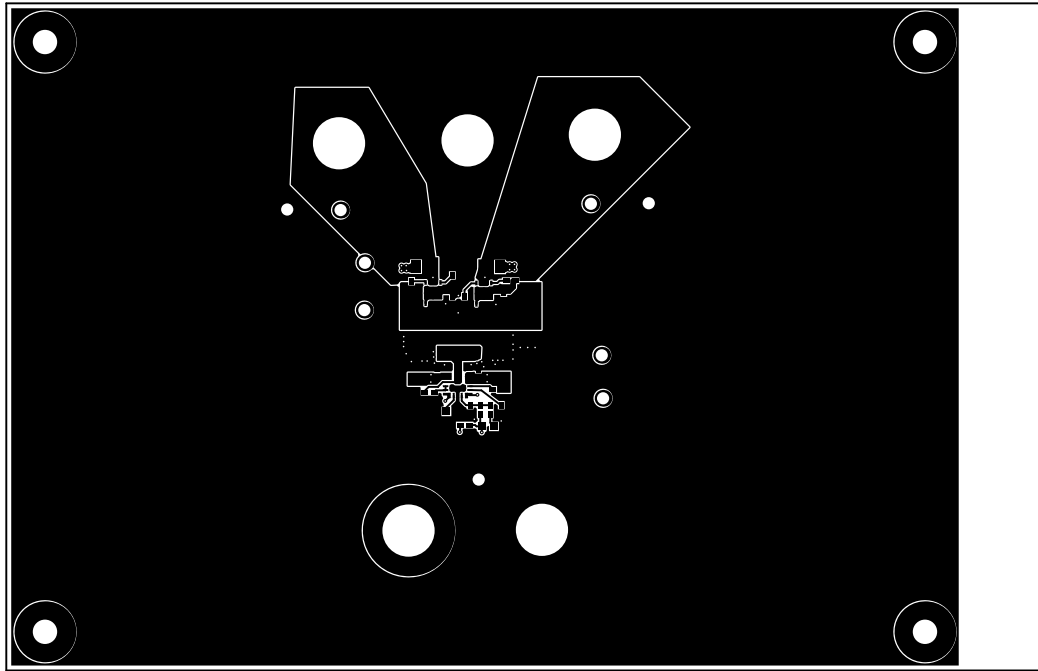
For evaluation only, not FCC approved for resale.



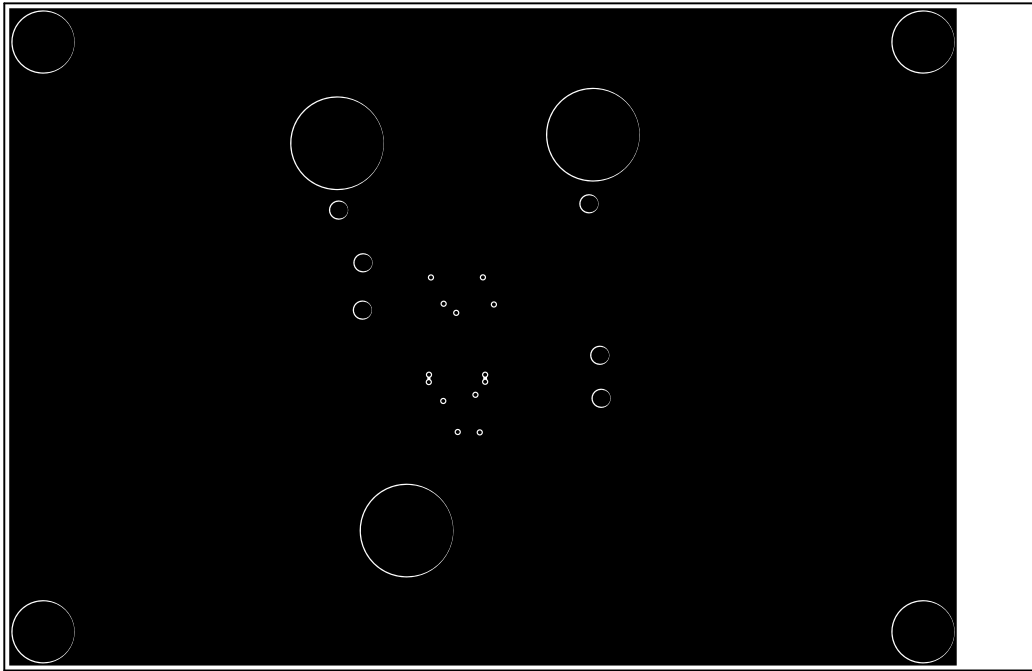
	BOARD #: PMP21771	REV: E1	SUN REV: Not In VersionControl
LAYER NAME =	TID #: N/A		
PLOT NAME =	GENERATED : 6/24/2019 5:00:25 PM	TEXAS INSTRUMENTS	



	BOARD #: PMP21771	REV: E1	SUN REV: Not In VersionControl
LAYER NAME =	TID #: N/A		
PLOT NAME =	GENERATED : 6/24/2019 5:00:25 PM	TEXAS INSTRUMENTS	

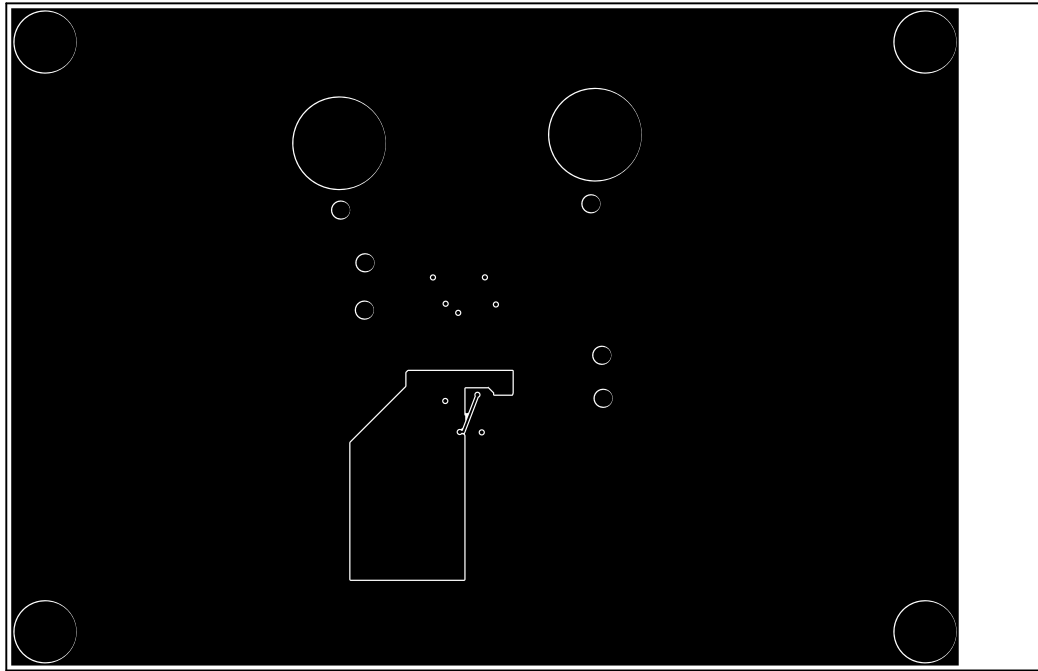


	BOARD #: PMP21771	REV: E1	SUN REV: Not In VersionControl
LAYER NAME =	TID #: N/A		
PLOT NAME =	GENERATED : 6/24/2019 5:00:26 PM	TEXAS INSTRUMENTS	

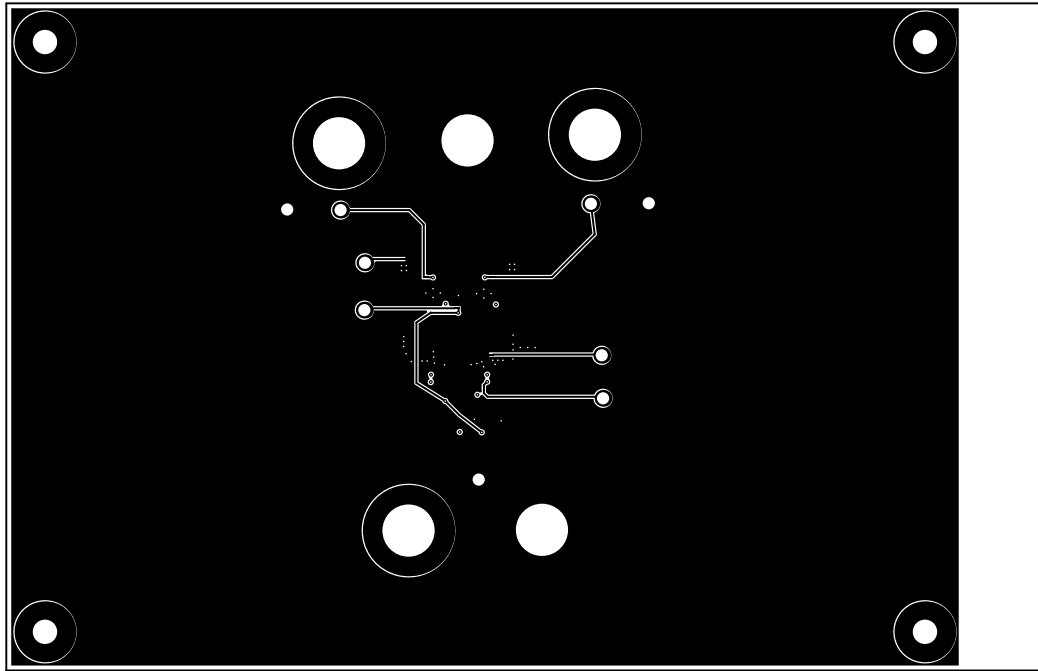


Layer	Name	Material	Thickness	Constant	Board Layer Stack
1	Top Overlay				///
2	Top Solder	Solder Resist	0.40mil	3.5	///
3	Top Layer	Copper	2.80mil		///
4	Dielectric 2		10.00mil	4.2	///
5	Signal Layer 1	Copper	1.40mil		///
6	Dielectric1	FR-4	59.20mil	4.8	///
7	Signal Layer 2	Copper	1.40mil		///
8	Dielectric 3		10.00mil	4.2	///
9	Bottom Layer	Copper	2.80mil		///
10	Bottom Solder	Solder Resist	0.40mil	3.5	///
11	Bottom Overlay				///

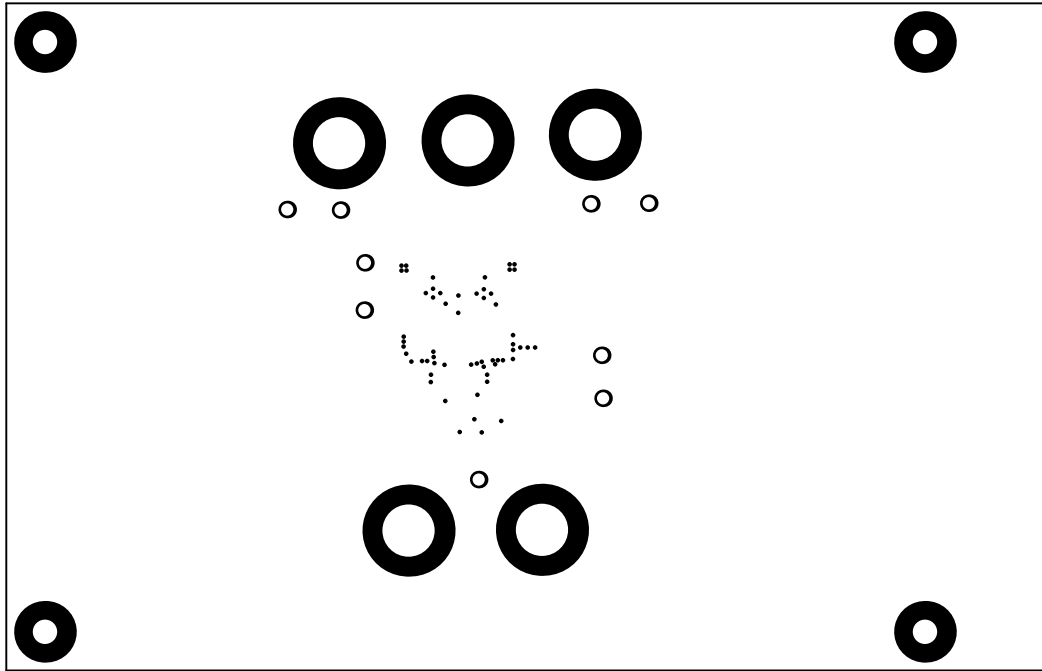
	BOARD #: PMP21771	REV: E1	SUN REV: Not In VersionControl
LAYER NAME =	TID #: N/A		
PLOT NAME =	GENERATED : 6/24/2019 5:00:27 PM	TEXAS INSTRUMENTS	



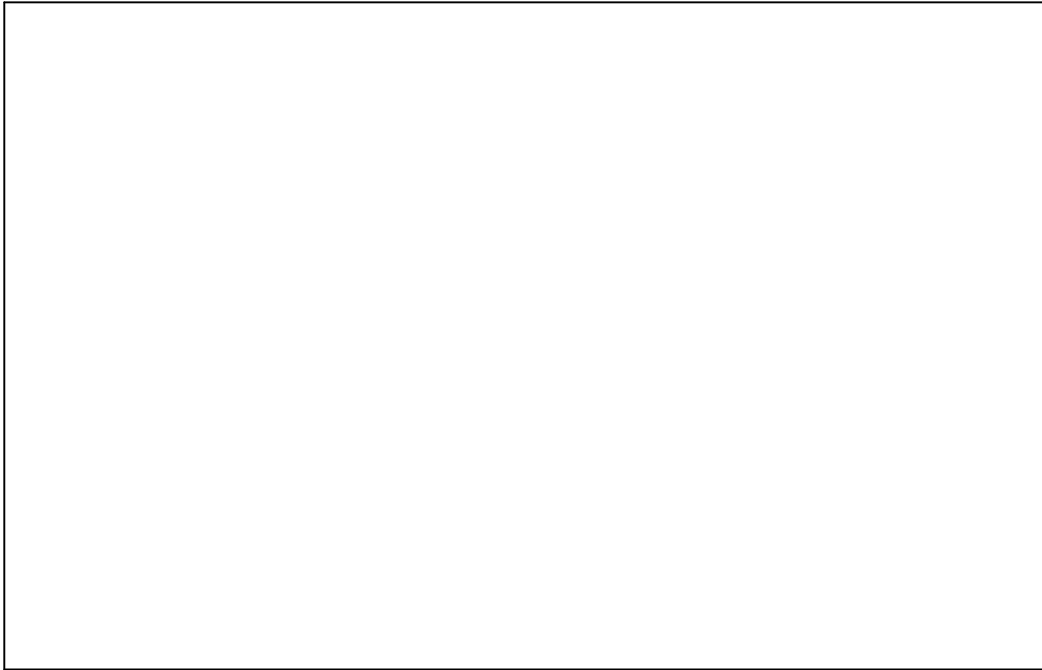
	BOARD #: PMP21771	REV: E1	SUN REV: Not In VersionControl
LAYER NAME =	TID #: N/A		
PLOT NAME =	GENERATED : 6/24/2019 5:00:28 PM	TEXAS INSTRUMENTS	



	BOARD #: PMP21771	REV: E1	SUN REV: Not In VersionControl
LAYER NAME =	TID #: N/A		
PLOT NAME =	GENERATED : 6/24/2019 5:00:28 PM	TEXAS INSTRUMENTS	

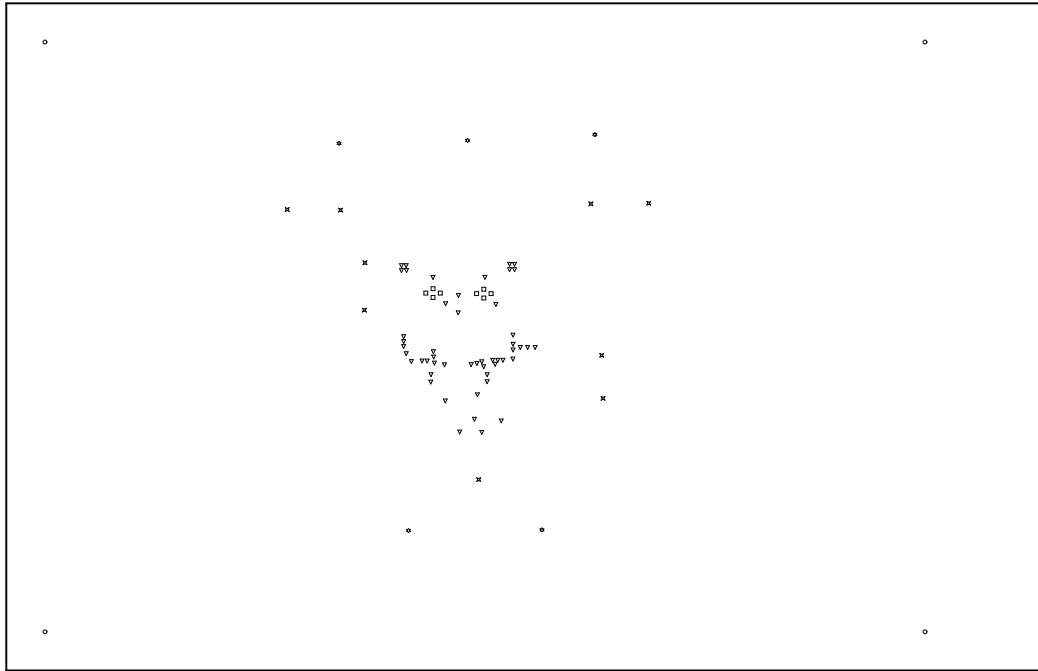


	BOARD #: PMP21771	REV: E1	SUN REV: Not In VersionControl
LAYER NAME =	TID #: N/A		
PLOT NAME =	GENERATED : 6/24/2019 5:00:29 PM	TEXAS INSTRUMENTS	



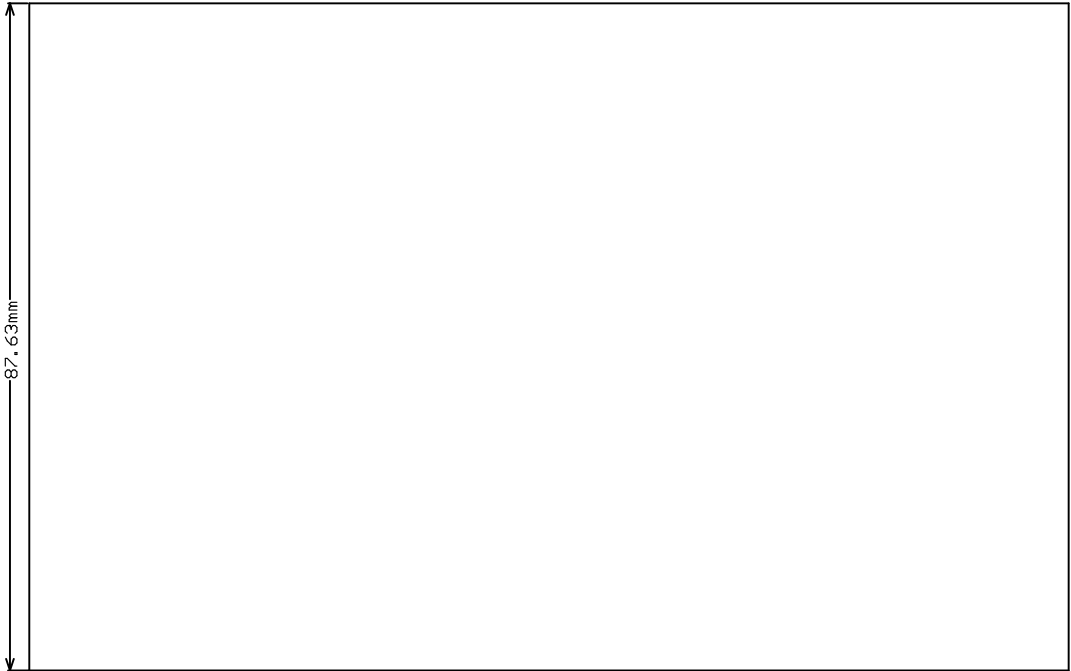
	BOARD #: PMP21771	REV: E1	SUN REV: Not In VersionControl
LAYER NAME =	TID #: N/A		
PLOT NAME =	GENERATED : 6/24/2019 5:00:30 PM	TEXAS INSTRUMENTS	





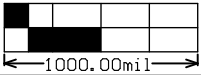
Symbol	Quantity	Finished Hole Size	Plated	Hole Type	Drill Layer Pair	Hole Tolerance
□	8	0.200mm (7.87mil)	PTH	Round	Top Layer - Bottom Layer	
▽	50	0.203mm (8.00mil)	PTH	Round	Top Layer - Bottom Layer	
✕	9	1.600mm (63.00mil)	PTH	Round	Top Layer - Bottom Layer	
○	4	3.200mm (125.98mil)	PTH	Round	Top Layer - Bottom Layer	
☆	5	6.858mm (270.00mil)	PTH	Round	Top Layer - Bottom Layer	
	76 Total					

	BOARD #: PMP21771	REV: E1	SUN REV: Not In VersionControl
LAYER NAME =	TID #: N/A		
PLOT NAME =	GENERATED : 6/24/2019 5:00:30 PM	TEXAS INSTRUMENTS	



87.63mm

125.73mm



1000.00mil

	BOARD #: PMP21771	REV: E1	SUN REV: Not In VersionControl
LAYER NAME =	TID #: N/A		
PLOT NAME =	GENERATED : 6/24/2019 5:00:31 PM	TEXAS INSTRUMENTS	

## IMPORTANT NOTICE AND DISCLAIMER

TI PROVIDES TECHNICAL AND RELIABILITY DATA (INCLUDING DATASHEETS), DESIGN RESOURCES (INCLUDING REFERENCE DESIGNS), APPLICATION OR OTHER DESIGN ADVICE, WEB TOOLS, SAFETY INFORMATION, AND OTHER RESOURCES "AS IS" AND WITH ALL FAULTS, AND DISCLAIMS ALL WARRANTIES, EXPRESS AND IMPLIED, INCLUDING WITHOUT LIMITATION ANY IMPLIED WARRANTIES OF MERCHANTABILITY, FITNESS FOR A PARTICULAR PURPOSE OR NON-INFRINGEMENT OF THIRD PARTY INTELLECTUAL PROPERTY RIGHTS.

These resources are intended for skilled developers designing with TI products. You are solely responsible for (1) selecting the appropriate TI products for your application, (2) designing, validating and testing your application, and (3) ensuring your application meets applicable standards, and any other safety, security, or other requirements. These resources are subject to change without notice. TI grants you permission to use these resources only for development of an application that uses the TI products described in the resource. Other reproduction and display of these resources is prohibited. No license is granted to any other TI intellectual property right or to any third party intellectual property right. TI disclaims responsibility for, and you will fully indemnify TI and its representatives against, any claims, damages, costs, losses, and liabilities arising out of your use of these resources.

TI's products are provided subject to TI's Terms of Sale ([www.ti.com/legal/termsofsale.html](http://www.ti.com/legal/termsofsale.html)) or other applicable terms available either on [ti.com](http://ti.com) or provided in conjunction with such TI products. TI's provision of these resources does not expand or otherwise alter TI's applicable warranties or warranty disclaimers for TI products.

Mailing Address: Texas Instruments, Post Office Box 655303, Dallas, Texas 75265  
Copyright © 2019, Texas Instruments Incorporated