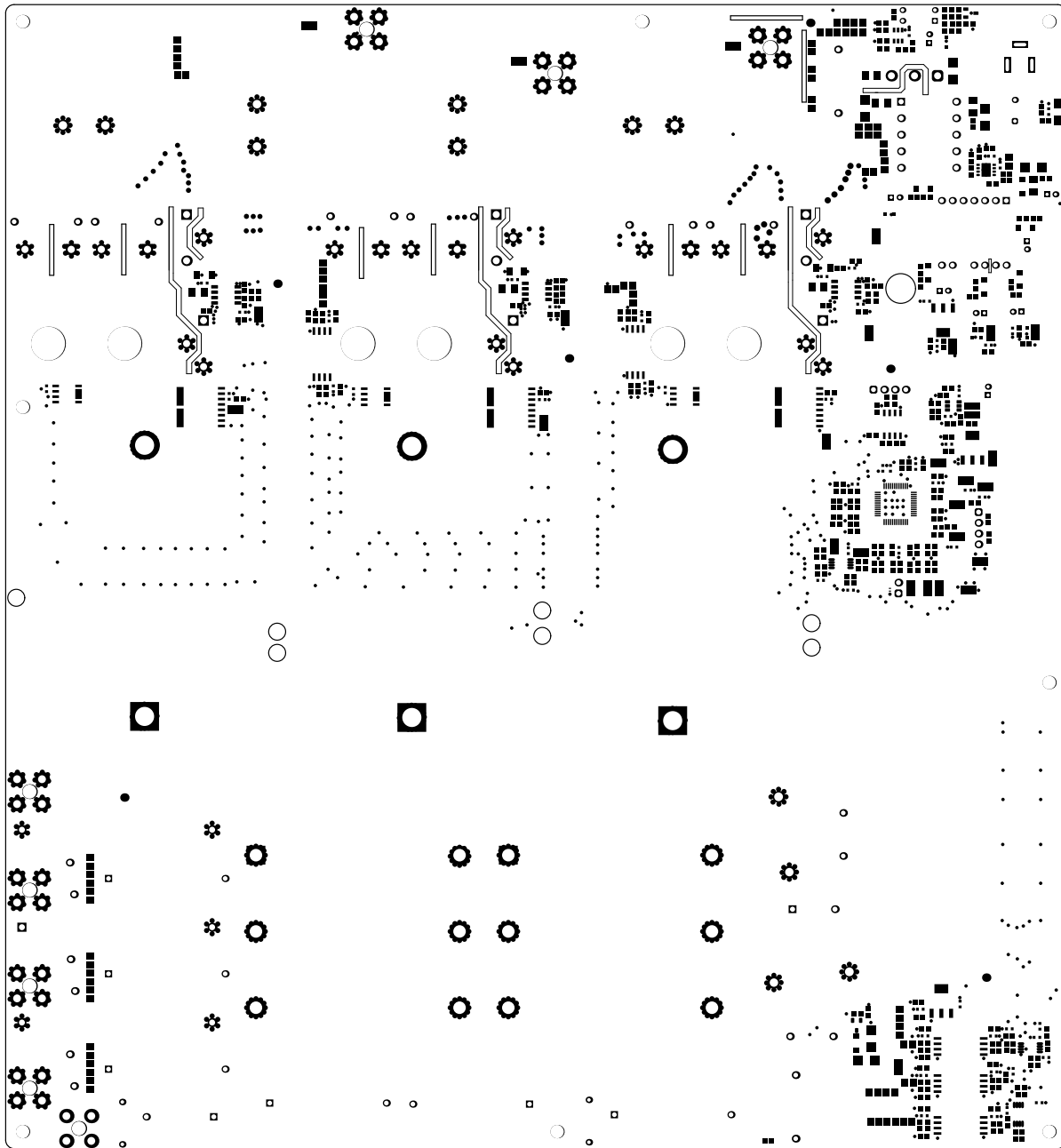
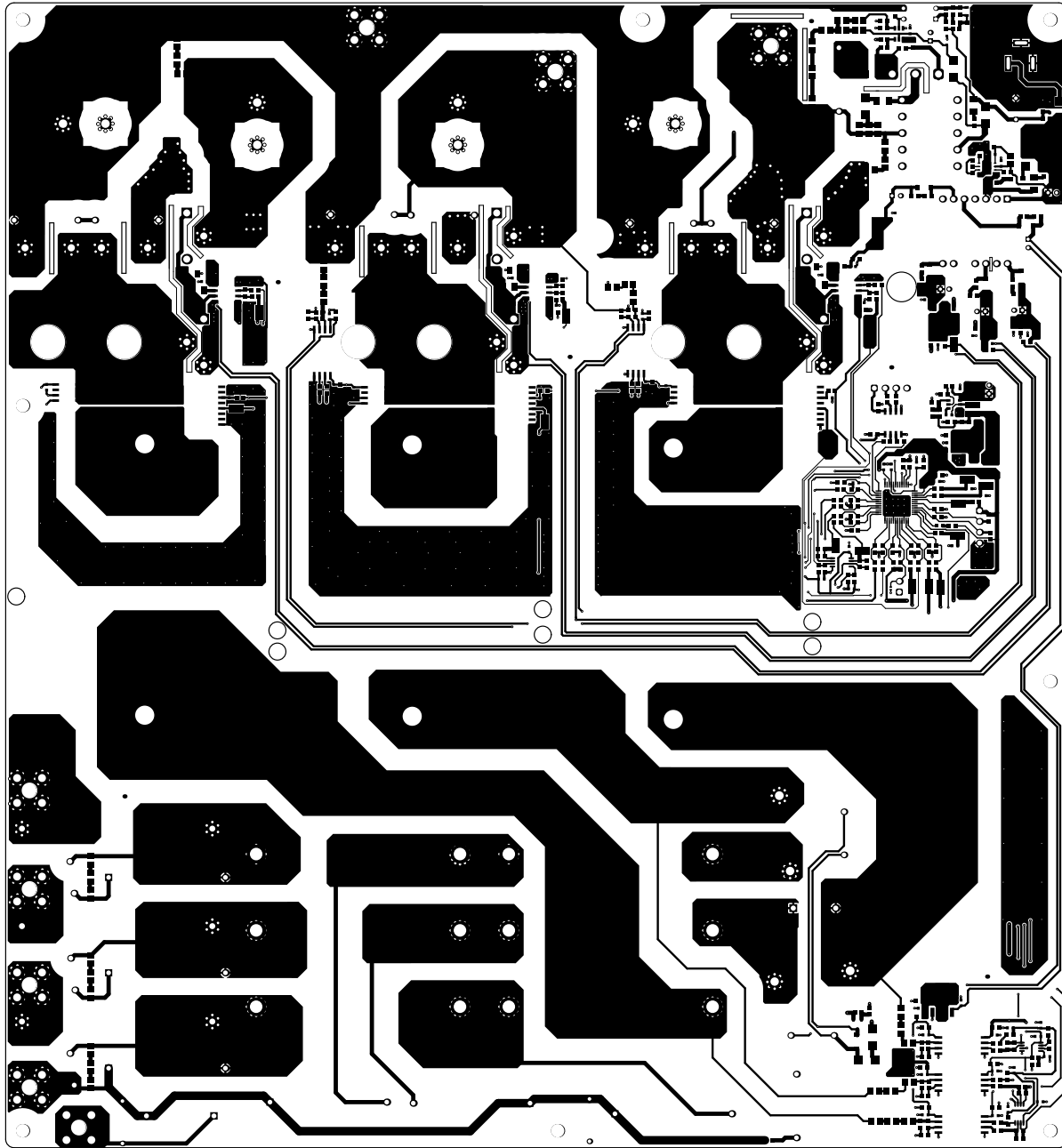


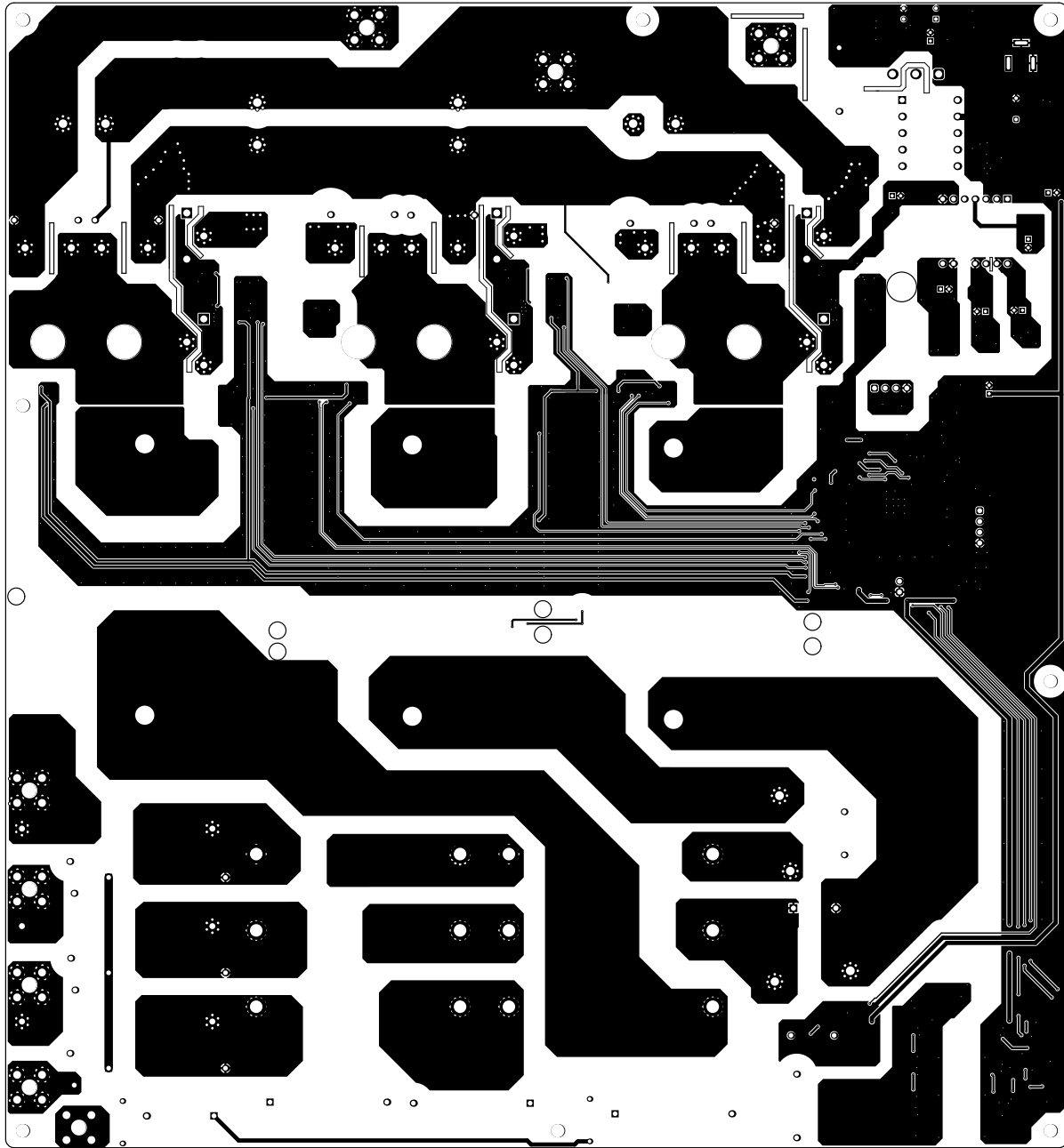
|                                  |                                   |                   |                                 |
|----------------------------------|-----------------------------------|-------------------|---------------------------------|
| ALL ARTWORK VIEWED FROM TOP SIDE | BOARD #: TIDA-010257              | REV: B            | SUN REV: Not in version control |
| LAYER NAME = Top Overlay         |                                   |                   |                                 |
| PLOT NAME = Top Overlay          | GENERATED : 12/6/2024 10:07:20 AM | TEXAS INSTRUMENTS |                                 |



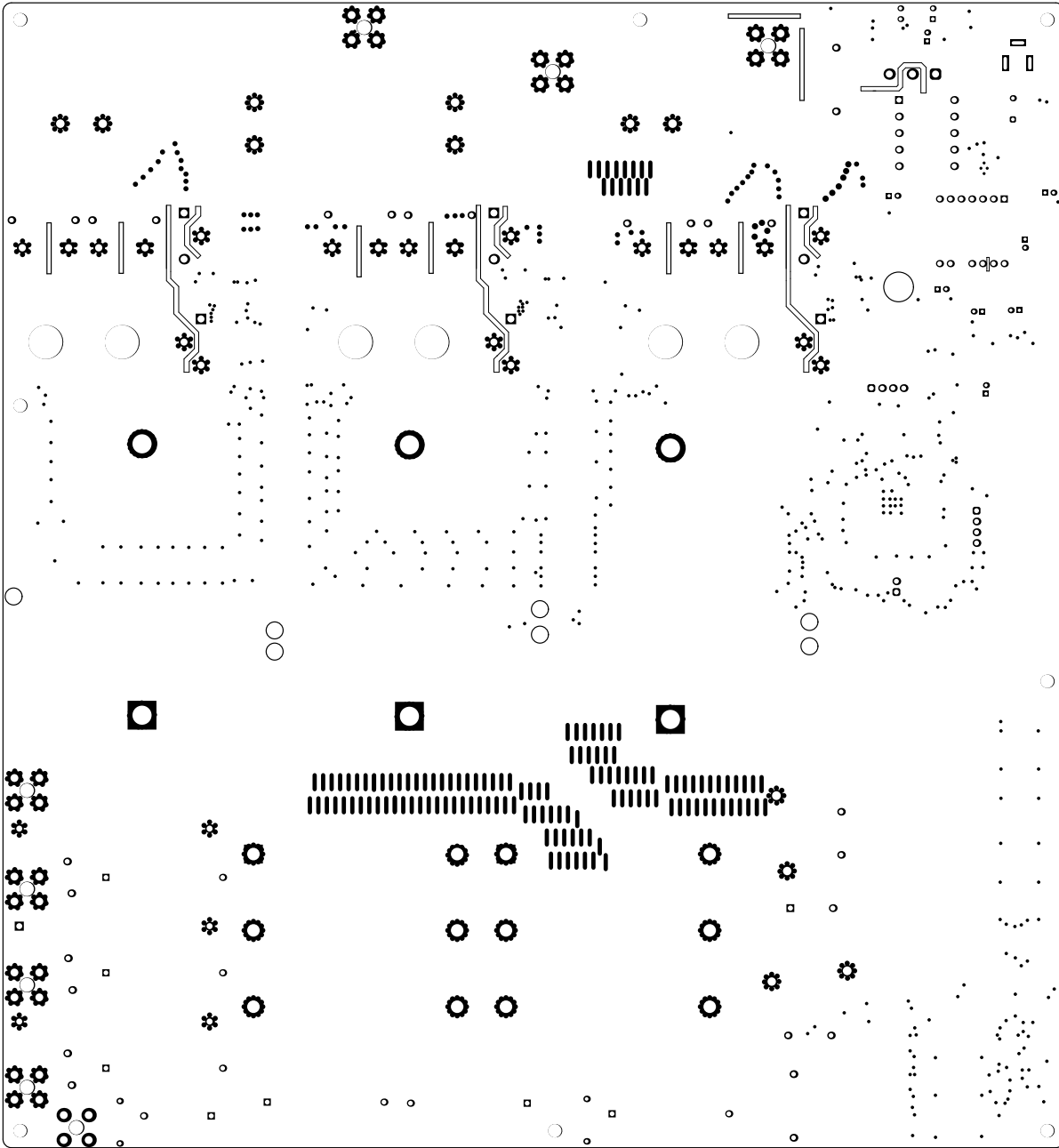
|                                  |                                   |                   |                                 |
|----------------------------------|-----------------------------------|-------------------|---------------------------------|
| ALL ARTWORK VIEWED FROM TOP SIDE | BOARD #: TIDA-010257              | REV: B            | SUN REV: Not in version control |
| LAYER NAME = Top Solder          |                                   |                   |                                 |
| PLOT NAME = Top Solder Mask      | GENERATED : 12/6/2024 10:07:20 AM | TEXAS INSTRUMENTS |                                 |



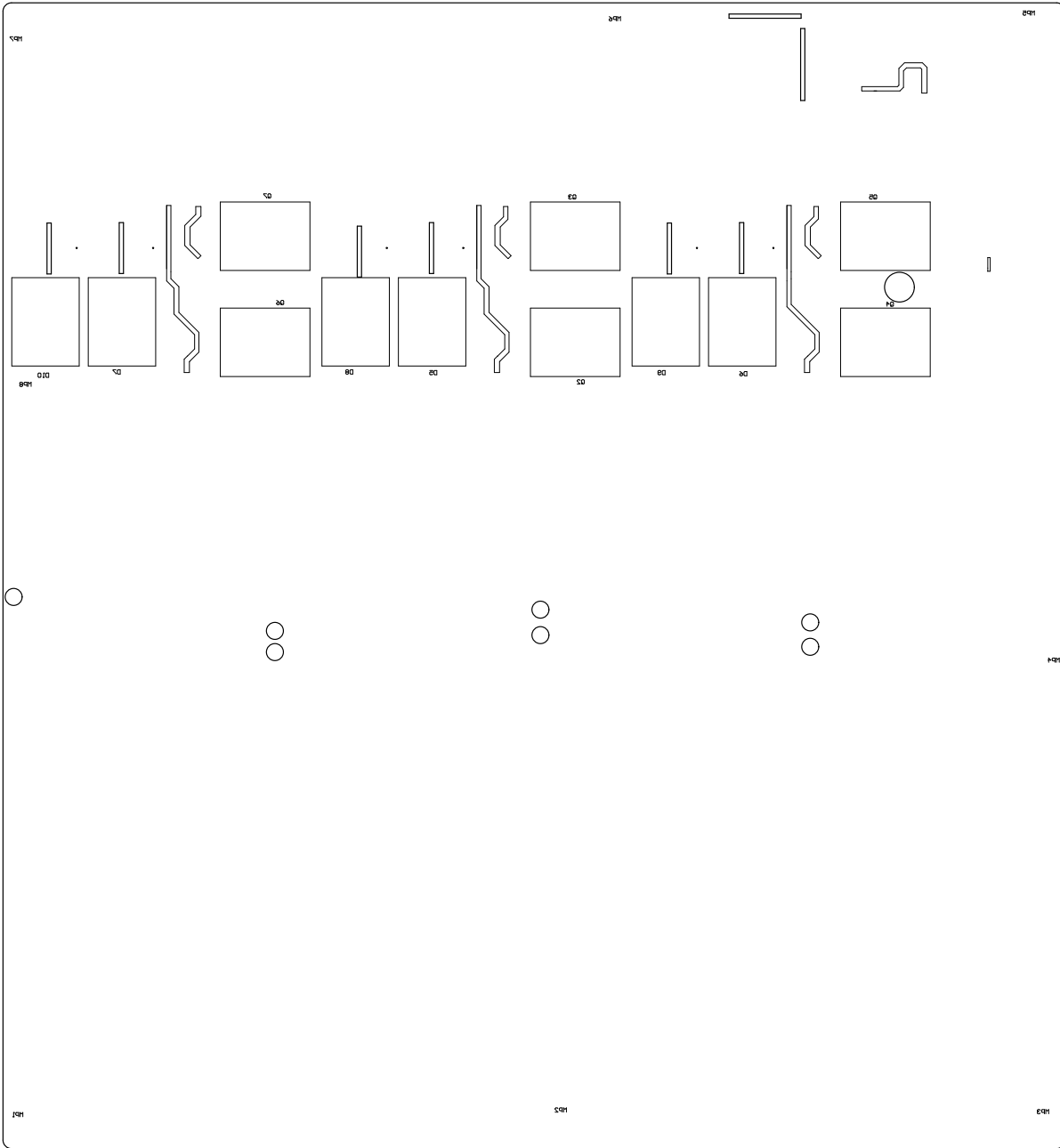
|                                  |                                   |                   |                                 |
|----------------------------------|-----------------------------------|-------------------|---------------------------------|
| ALL ARTWORK VIEWED FROM TOP SIDE | BOARD #: TIDA-010257              | REV: B            | SUN REV: Not in version control |
| LAYER NAME = Top Layer           |                                   |                   |                                 |
| PLOT NAME = Top Layer            | GENERATED : 12/6/2024 10:07:20 AM | TEXAS INSTRUMENTS |                                 |



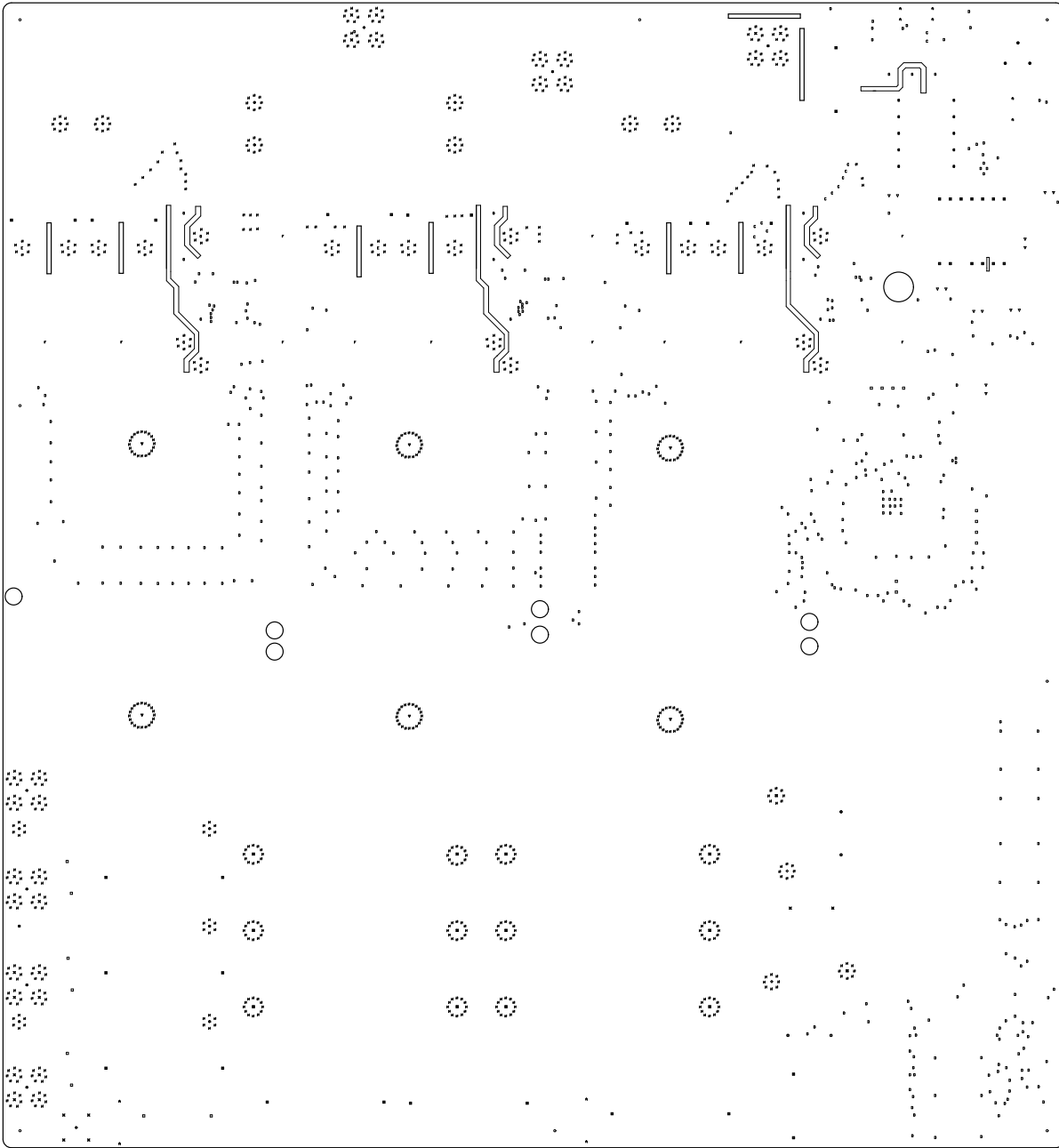
|                                  |                                   |                   |                                 |
|----------------------------------|-----------------------------------|-------------------|---------------------------------|
| ALL ARTWORK VIEWED FROM TOP SIDE | BOARD #: TIDA-010257              | REV: B            | SUN REV: Not in version control |
| LAYER NAME = Bottom Layer        |                                   |                   |                                 |
| PLOT NAME = Bottom Layer         | GENERATED : 12/6/2024 10:07:20 AM | TEXAS INSTRUMENTS |                                 |



|                                  |                                   |                   |                                 |
|----------------------------------|-----------------------------------|-------------------|---------------------------------|
| ALL ARTWORK VIEWED FROM TOP SIDE | BOARD #: TIDA-010257              | REV: B            | SUN REV: Not in version control |
| LAYER NAME = Bottom Solder       |                                   |                   |                                 |
| PLOT NAME = Bottom Solder Mask   | GENERATED : 12/6/2024 10:07:20 AM | TEXAS INSTRUMENTS |                                 |



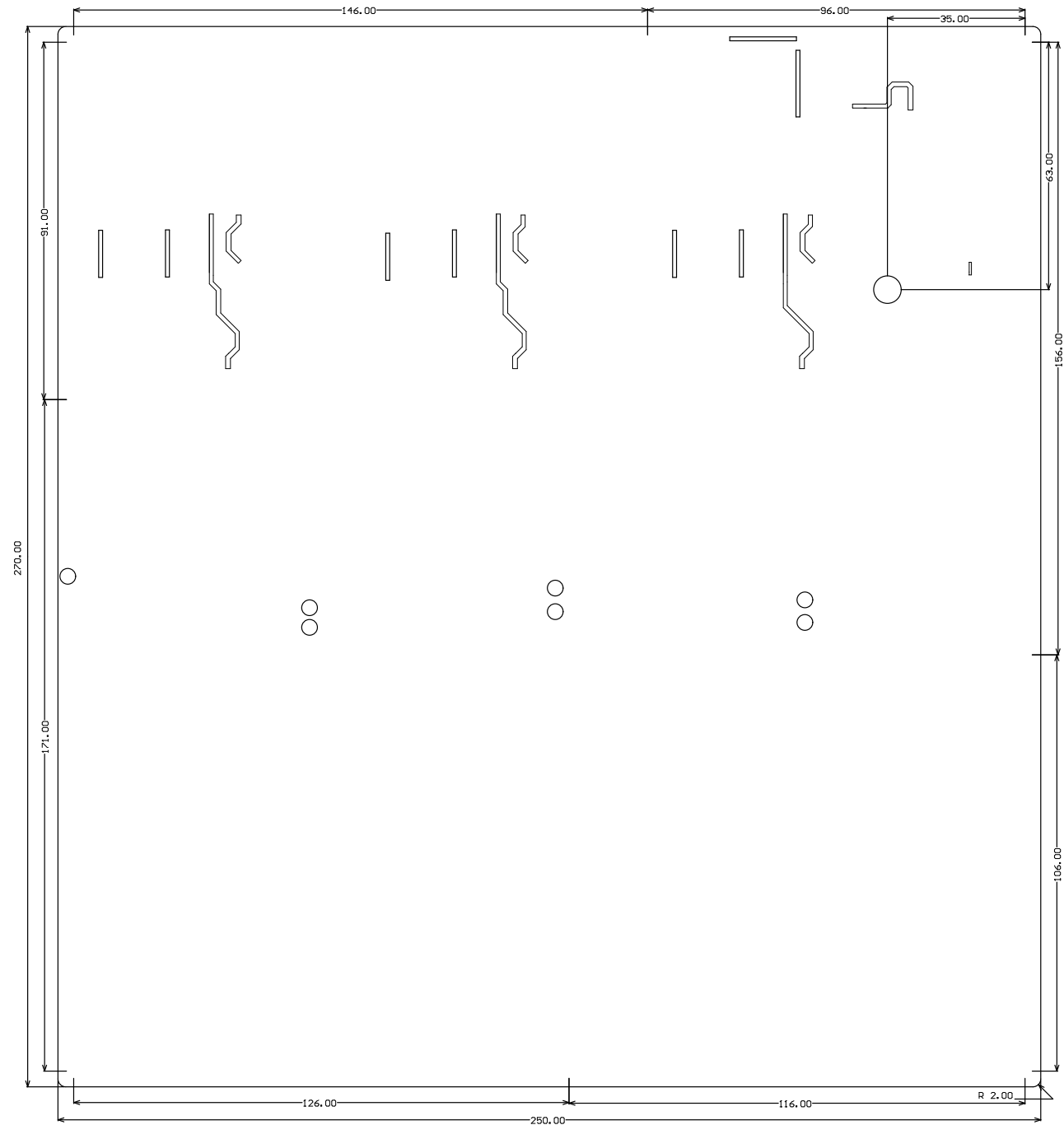
|                                  |                                   |                   |                                 |
|----------------------------------|-----------------------------------|-------------------|---------------------------------|
| ALL ARTWORK VIEWED FROM TOP SIDE | BOARD #: TIDA-010257              | REU: B            | SUN REV: Not in version control |
| LAYER NAME = Bottom Overlay      |                                   |                   |                                 |
| PLOT NAME = Bottom Overlay       | GENERATED : 12/6/2024 10:07:20 AM | TEXAS INSTRUMENTS |                                 |



| Symbol     | Count | Hole Size           | Plated | Hole Type | Drill Layer Pair         | Via/Pad | Pad Shape | Template           |
|------------|-------|---------------------|--------|-----------|--------------------------|---------|-----------|--------------------|
| ✕          | 2     | 47.24mil (1.200mm)  | PTH    | Round     | Top Layer - Bottom Layer | Pad     | (Mixed)   | (Mixed)            |
| ◇          | 2     | 77.95mil (1.980mm)  | PTH    | Round     | Top Layer - Bottom Layer | Pad     | Rectangle | s250h198(Tol8-8)   |
| ⊗          | 2     | 81.10mil (2.060mm)  | PTH    | Round     | Top Layer - Bottom Layer | Pad     | Rounded   | c260h206(Tol13-13) |
| ⊕          | 3     | 31.50mil (0.800mm)  | PTH    | Slot      | Top Layer - Bottom Layer | Pad     | Rectangle | r350_130h80_300    |
| ⊙          | 4     | 42.91mil (1.090mm)  | PTH    | Round     | Top Layer - Bottom Layer | Pad     | Rounded   | c160h109(Tol8-8)   |
| ✱          | 6     | 55.12mil (1.400mm)  | PTH    | Round     | Top Layer - Bottom Layer | Pad     | (Mixed)   | (Mixed)            |
| ▽          | 6     | 177.17mil (4.500mm) | PTH    | Round     | Top Layer - Bottom Layer | Pad     | (Mixed)   | (Mixed)            |
| ●          | 8     | 78.74mil (2.000mm)  | PTH    | Round     | Top Layer - Bottom Layer | Pad     | (Mixed)   | (Mixed)            |
| ○          | 8     | 124.02mil (3.150mm) | NPTH   | Round     | Top Layer - Bottom Layer | Pad     | Rounded   | c315hn315m315p-1   |
| ✱          | 8     | 129.92mil (3.300mm) | NPTH   | Round     | Top Layer - Bottom Layer | Pad     | Rounded   | c300hn330m340      |
| A          | 10    | 33.47mil (0.850mm)  | PTH    | Round     | Top Layer - Bottom Layer | Pad     | (Mixed)   | (Mixed)            |
| B          | 10    | 48.03mil (1.220mm)  | PTH    | Round     | Top Layer - Bottom Layer | Pad     | (Mixed)   | (Mixed)            |
| C          | 12    | 28.00mil (0.711mm)  | PTH    | Round     | Top Layer - Bottom Layer | (Mixed) | (Mixed)   | (Mixed)            |
| E          | 12    | 66.93mil (1.700mm)  | PTH    | Round     | Top Layer - Bottom Layer | Pad     | (Mixed)   | (Mixed)            |
| ✕          | 12    | 116.14mil (2.950mm) | PTH    | Round     | Top Layer - Bottom Layer | Pad     | (Mixed)   | (Mixed)            |
| F          | 12    | 314.96mil (8.000mm) | NPTH   | Round     | Top Layer - Bottom Layer | Pad     | Rounded   | (Mixed)            |
| ▽          | 14    | 29.53mil (0.750mm)  | PTH    | Round     | Top Layer - Bottom Layer | Pad     | (Mixed)   | (Mixed)            |
| □          | 18    | 45.28mil (1.150mm)  | PTH    | Round     | Top Layer - Bottom Layer | Pad     | (Mixed)   | (Mixed)            |
| G          | 21    | 64.96mil (1.650mm)  | PTH    | Round     | Top Layer - Bottom Layer | Pad     | (Mixed)   | (Mixed)            |
| ✕          | 32    | 72.84mil (1.850mm)  | PTH    | Round     | Top Layer - Bottom Layer | Pad     | Rounded   | c320h185           |
| ■          | 41    | 43.31mil (1.100mm)  | PTH    | Round     | Top Layer - Bottom Layer | Pad     | (Mixed)   | (Mixed)            |
| D          | 456   | 7.87mil (0.200mm)   | PTH    | Round     | Top Layer - Bottom Layer | Via     | Rounded   | (Mixed)            |
| H          | 760   | 23.62mil (0.600mm)  | PTH    | Round     | Top Layer - Bottom Layer | Via     | Rounded   | v100h60            |
| 1459 Total |       |                     |        |           |                          |         |           |                    |

Slot definitions : Routed Path Length = Calculated from tool start centre position to tool end centre position.  
Hole Length = Routed Path Length + Tool Size = Slot length as defined in the PCB layout

|                                  |                                   |                   |                                 |
|----------------------------------|-----------------------------------|-------------------|---------------------------------|
| ALL ARTWORK VIEWED FROM TOP SIDE | BOARD #: TIDA-010257              | REV: B            | SUN REV: Not in version control |
| LAYER NAME = Drill Drawing       |                                   |                   |                                 |
| PLOT NAME = Drill Drawing        | GENERATED : 12/6/2024 10:07:20 AM | TEXAS INSTRUMENTS |                                 |



|                                  |                                   |                   |                                 |
|----------------------------------|-----------------------------------|-------------------|---------------------------------|
| ALL ARTWORK VIEWED FROM TOP SIDE | BOARD #: TIDA-010257              | REV: B            | SUN REV: Not in version control |
| LAYER NAME = M2 Board Dimensions |                                   |                   |                                 |
| PLOT NAME = Board Dimensions     | GENERATED : 12/6/2024 10:07:20 AM | TEXAS INSTRUMENTS |                                 |



## IMPORTANT NOTICE AND DISCLAIMER

TI PROVIDES TECHNICAL AND RELIABILITY DATA (INCLUDING DATA SHEETS), DESIGN RESOURCES (INCLUDING REFERENCE DESIGNS), APPLICATION OR OTHER DESIGN ADVICE, WEB TOOLS, SAFETY INFORMATION, AND OTHER RESOURCES "AS IS" AND WITH ALL FAULTS, AND DISCLAIMS ALL WARRANTIES, EXPRESS AND IMPLIED, INCLUDING WITHOUT LIMITATION ANY IMPLIED WARRANTIES OF MERCHANTABILITY, FITNESS FOR A PARTICULAR PURPOSE OR NON-INFRINGEMENT OF THIRD PARTY INTELLECTUAL PROPERTY RIGHTS.

These resources are intended for skilled developers designing with TI products. You are solely responsible for (1) selecting the appropriate TI products for your application, (2) designing, validating and testing your application, and (3) ensuring your application meets applicable standards, and any other safety, security, regulatory or other requirements.

These resources are subject to change without notice. TI grants you permission to use these resources only for development of an application that uses the TI products described in the resource. Other reproduction and display of these resources is prohibited. No license is granted to any other TI intellectual property right or to any third party intellectual property right. TI disclaims responsibility for, and you will fully indemnify TI and its representatives against, any claims, damages, costs, losses, and liabilities arising out of your use of these resources.

TI's products are provided subject to [TI's Terms of Sale](#) or other applicable terms available either on [ti.com](https://www.ti.com) or provided in conjunction with such TI products. TI's provision of these resources does not expand or otherwise alter TI's applicable warranties or warranty disclaimers for TI products.

TI objects to and rejects any additional or different terms you may have proposed.

Mailing Address: Texas Instruments, Post Office Box 655303, Dallas, Texas 75265  
Copyright © 2024, Texas Instruments Incorporated