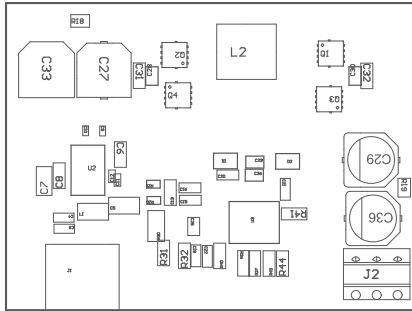


- 201 These labels fit alternately on either (1) and (2) sides. They shall be 8 in form. They shall be per the Label Table in the PP assembly.
- 202 These assemblies are 100 umph/100, 100 procedures shall be observed.
- 203 These assemblies must be clean and free from dust and all contaminants, use of no clean flux is not acceptable.
- 204 These assemblies must comply with workmanship standards IPC-A-610 Class 2, unless otherwise specified.

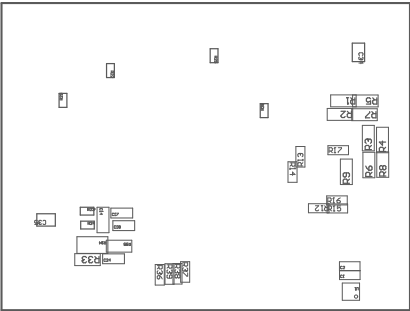


COMPONENTS SHOWN "TOP" SHOULD NOT BE INVERTED.

ASSEMBLY INSTRUCTIONS

REV

SEE FIGURES FROM TOP SIDE	DATE: 10/10/2020	PPR: J2020	REV: 1.0	DATE: 10/10/2020	REV: 1.0
PLAT NAME: Top Assembly Drawing	REVISED: 1	4-00000	04/10/20	THIRD PARTIES/CUSTOMERS	



CONSIDER HOLE TOP SURFACE TO BE FINISHED.

FINISH SURFACE

SEE

FOR USE BY BUYER USE	REVISED BY	PROCESS	DATE	BY (D. number control)
PART NAME	MATERIAL	QUANTITY	DRAWN BY	DATE SUBMITTED

## IMPORTANT NOTICE AND DISCLAIMER

TI PROVIDES TECHNICAL AND RELIABILITY DATA (INCLUDING DATA SHEETS), DESIGN RESOURCES (INCLUDING REFERENCE DESIGNS), APPLICATION OR OTHER DESIGN ADVICE, WEB TOOLS, SAFETY INFORMATION, AND OTHER RESOURCES "AS IS" AND WITH ALL FAULTS, AND DISCLAIMS ALL WARRANTIES, EXPRESS AND IMPLIED, INCLUDING WITHOUT LIMITATION ANY IMPLIED WARRANTIES OF MERCHANTABILITY, FITNESS FOR A PARTICULAR PURPOSE OR NON-INFRINGEMENT OF THIRD PARTY INTELLECTUAL PROPERTY RIGHTS.

These resources are intended for skilled developers designing with TI products. You are solely responsible for (1) selecting the appropriate TI products for your application, (2) designing, validating and testing your application, and (3) ensuring your application meets applicable standards, and any other safety, security, regulatory or other requirements.

These resources are subject to change without notice. TI grants you permission to use these resources only for development of an application that uses the TI products described in the resource. Other reproduction and display of these resources is prohibited. No license is granted to any other TI intellectual property right or to any third party intellectual property right. TI disclaims responsibility for, and you will fully indemnify TI and its representatives against, any claims, damages, costs, losses, and liabilities arising out of your use of these resources.

TI's products are provided subject to [TI's Terms of Sale](#) or other applicable terms available either on [ti.com](https://www.ti.com) or provided in conjunction with such TI products. TI's provision of these resources does not expand or otherwise alter TI's applicable warranties or warranty disclaimers for TI products.

TI objects to and rejects any additional or different terms you may have proposed.

Mailing Address: Texas Instruments, Post Office Box 655303, Dallas, Texas 75265  
Copyright © 2024, Texas Instruments Incorporated