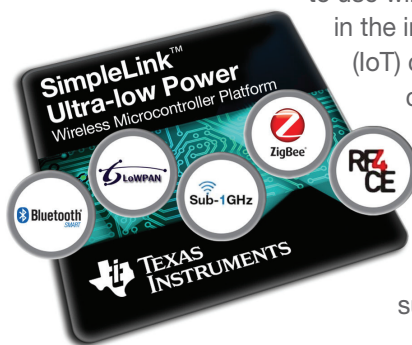


SimpleLink™ Ultra-Low Power Wireless Microcontroller Platform



The industry's **only multi-standard family** with code- and pin-compatibility across:

- **Bluetooth®** low energy (Bluetooth Smart)
- 6LoWPAN
- Sub-1 GHz
- ZigBee®
- RF4CE™ and
- Proprietary modes
- ANT/ANT+



Overview

The SimpleLink™ ultra-low power wireless microcontroller (MCU) platform is the broadest, lowest power and easiest to use wireless connectivity offering in the industry for Internet of Things (IoT) connected devices. With the capability to leverage multiple standards, customers have flexibility in design and TI makes it easy by providing tools and software, reference designs, community support and more.

What standard fits your design?

- **Bluetooth low energy:** Control ultra-low power wireless solutions with a smartphone or tablet
- **6LoWPAN:** Complete solution to the cloud in a wide-area mesh network using open IP standards
- **Sub-1 GHz:** Provides long range and reliable communication at ultra-low power
- **ZigBee:** Standardized stacks, protocols and application profiles for robust, low-power mesh networks
- **RF4CE:** Two-way communication standard designed for ultra-low power input devices such as remote controls
- **ANT/ANT+:** Provides ultra-low-power wireless protocol and application profiles for sports, fitness and other applications.

Available products

- **SimpleLink dual-band C1350 wireless MCU:** The CC1350 is the world's first dual-band (Sub-1 GHz and 2.4 GHz) wireless

microcontroller. Monitor your IoT networks from your handheld device with TI's Sub-1 GHz and Bluetooth low energy single-chip solution.

- **SimpleLink Sub-1 GHz CC1310 wireless MCU:** Combines low-power with high-RF performance in a tiny package for all ISM bands. With this device you are able to achieve 20 kilometers on a coin cell!
- **SimpleLink 2.4-GHz multi-standard CC2650 wireless MCU:** The CC2650 supports multiple 2.4 GHz standards allowing customers to leverage code compatibility across 2.4 GHz standards by downloading the corresponding protocol stack.
- **SimpleLink Bluetooth low energy CC2640 wireless MCU:** The CC2640 is the lowest power Flash-based Bluetooth 4.2 solution with multi-year operation on smaller coin cells.
- **SimpleLink 6LoWPAN/ZigBee CC2630 wireless MCU:** The CC2630 supports large networks connecting 1,000s of nodes in homes, buildings and cities. Take advantage of easy IP and cloud connectivity through 6LoWPAN operation where each device has an IPv6 address.

Getting started

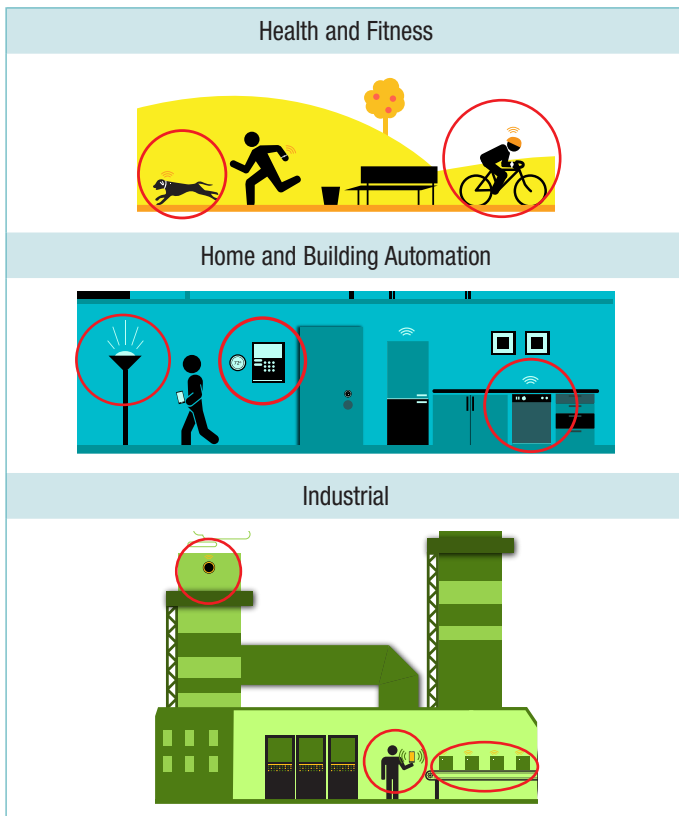
To simplify development, TI provides a broad range of tools and software that offer flexibility between technologies. All kits for 2.4-GHz operation are based on the multi-standard CC2650 wireless MCU. The CC2650STK SimpleLink SensorTag is a rapid prototyping and development tool designed to shorten the design time for CC26xx development from months to hours.

Key benefits

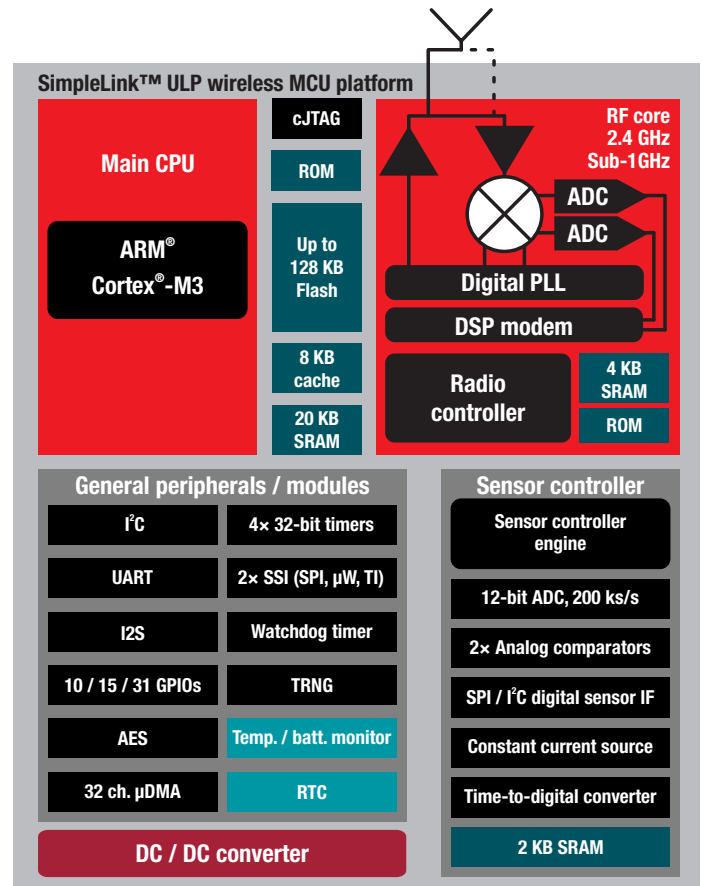
- **The lowest power:**
 - Go battery-less with energy harvesting
 - Use a coin cell battery for multi-year, always-on operation
 - Integrated ultra-low power sensor controller
- **Industry's only multi-standard platform:**
 - Code- and pin-compatibility across Bluetooth low energy, 6LoWPAN, ZigBee, Sub-1 GHz and RF4CE
- **Easiest to design with:**
 - ARM® Cortex®-M3 based MCU
 - TI-RTOS
 - Simplest RF and antenna design
 - Built-in robust security
 - Ready-to-use protocol stacks
 - Tools and reference designs

Application areas

The SimpleLink ultra-low power wireless MCU platform is designed for use in multiple applications including:



Block diagram



Hardware

CC1310 LaunchPad™ kit (launchxl-cc1310) \$29.00	CC1350 LaunchPad kit (launchxl-cc1350) \$29.00	SensorTag kits (CC1350STK) & (CC2650STK) \$29.00	CC2650 LaunchPad kit (launchxl-cc2650) \$29.00
TI's first LaunchPad kit with a Sub-1 GHz radio offering low power and long-range connectivity.	This CC1350 kit combines a Sub-1 GHz radio with a Bluetooth low energy radio for the ultimate combination of easy mobile phone integration with long-range connectivity.	The CC1350 kit combines a Sub-1 GHz radio with a Bluetooth low energy radio for easy mobile phone integration with long-range connectivity. The CC2650STK Bluetooth low energy SensorTag includes iBeacon technology, allowing your phone to launch applications and customize content based on SensorTag data and physical location.	This LaunchPad kit brings easy <i>Bluetooth</i> ® low energy connectivity to the LaunchPad kit ecosystem.

Software

SmartRF™ Studio 7	Sensor Controller Studio	SmartRF Flash Programmer 2	CCS Uniflash
PC application that helps designers of radio systems easily evaluate the RF-IC at an early stage in the design process	Development environment to implement sensor controller task algorithms and rapid development	PC application for programming CC26xx devices	Flash programmer with Windows® and Linux® support

For more information on the SimpleLink ultra-low power wireless MCU platform, please visit www.ti.com/simplelinkulp

The platform bar, SimpleLink, and SmartRF are trademarks of Texas Instruments. All other trademarks are the property of their respective owners.

IMPORTANT NOTICE

Texas Instruments Incorporated and its subsidiaries (TI) reserve the right to make corrections, enhancements, improvements and other changes to its semiconductor products and services per JESD46, latest issue, and to discontinue any product or service per JESD48, latest issue. Buyers should obtain the latest relevant information before placing orders and should verify that such information is current and complete. All semiconductor products (also referred to herein as "components") are sold subject to TI's terms and conditions of sale supplied at the time of order acknowledgment.

TI warrants performance of its components to the specifications applicable at the time of sale, in accordance with the warranty in TI's terms and conditions of sale of semiconductor products. Testing and other quality control techniques are used to the extent TI deems necessary to support this warranty. Except where mandated by applicable law, testing of all parameters of each component is not necessarily performed.

TI assumes no liability for applications assistance or the design of Buyers' products. Buyers are responsible for their products and applications using TI components. To minimize the risks associated with Buyers' products and applications, Buyers should provide adequate design and operating safeguards.

TI does not warrant or represent that any license, either express or implied, is granted under any patent right, copyright, mask work right, or other intellectual property right relating to any combination, machine, or process in which TI components or services are used. Information published by TI regarding third-party products or services does not constitute a license to use such products or services or a warranty or endorsement thereof. Use of such information may require a license from a third party under the patents or other intellectual property of the third party, or a license from TI under the patents or other intellectual property of TI.

Reproduction of significant portions of TI information in TI data books or data sheets is permissible only if reproduction is without alteration and is accompanied by all associated warranties, conditions, limitations, and notices. TI is not responsible or liable for such altered documentation. Information of third parties may be subject to additional restrictions.

Resale of TI components or services with statements different from or beyond the parameters stated by TI for that component or service voids all express and any implied warranties for the associated TI component or service and is an unfair and deceptive business practice. TI is not responsible or liable for any such statements.

Buyer acknowledges and agrees that it is solely responsible for compliance with all legal, regulatory and safety-related requirements concerning its products, and any use of TI components in its applications, notwithstanding any applications-related information or support that may be provided by TI. Buyer represents and agrees that it has all the necessary expertise to create and implement safeguards which anticipate dangerous consequences of failures, monitor failures and their consequences, lessen the likelihood of failures that might cause harm and take appropriate remedial actions. Buyer will fully indemnify TI and its representatives against any damages arising out of the use of any TI components in safety-critical applications.

In some cases, TI components may be promoted specifically to facilitate safety-related applications. With such components, TI's goal is to help enable customers to design and create their own end-product solutions that meet applicable functional safety standards and requirements. Nonetheless, such components are subject to these terms.

No TI components are authorized for use in FDA Class III (or similar life-critical medical equipment) unless authorized officers of the parties have executed a special agreement specifically governing such use.

Only those TI components which TI has specifically designated as military grade or "enhanced plastic" are designed and intended for use in military/aerospace applications or environments. Buyer acknowledges and agrees that any military or aerospace use of TI components which have **not** been so designated is solely at the Buyer's risk, and that Buyer is solely responsible for compliance with all legal and regulatory requirements in connection with such use.

TI has specifically designated certain components as meeting ISO/TS16949 requirements, mainly for automotive use. In any case of use of non-designated products, TI will not be responsible for any failure to meet ISO/TS16949.

Products

Audio	www.ti.com/audio
Amplifiers	amplifier.ti.com
Data Converters	dataconverter.ti.com
DLP® Products	www.dlp.com
DSP	dsp.ti.com
Clocks and Timers	www.ti.com/clocks
Interface	interface.ti.com
Logic	logic.ti.com
Power Mgmt	power.ti.com
Microcontrollers	microcontroller.ti.com
RFID	www.ti-rfid.com
OMAP Applications Processors	www.ti.com/omap
Wireless Connectivity	www.ti.com/wirelessconnectivity

Applications

Automotive and Transportation	www.ti.com/automotive
Communications and Telecom	www.ti.com/communications
Computers and Peripherals	www.ti.com/computers
Consumer Electronics	www.ti.com/consumer-apps
Energy and Lighting	www.ti.com/energy
Industrial	www.ti.com/industrial
Medical	www.ti.com/medical
Security	www.ti.com/security
Space, Avionics and Defense	www.ti.com/space-avionics-defense
Video and Imaging	www.ti.com/video

TI E2E Community

e2e.ti.com