

TPS568215 SWIFT™ Step-Down Converter Evaluation Module User's Guide



ABSTRACT

This user's guide contains information for the TPS568215EVM-762 evaluation module (PWR762) as well as for the TPS568215 dc/dc converter. Also included are the performance specifications, board layouts, schematic, and the bill of materials for the TPS568215EVM-762.

Table of Contents

| | |
|--|-----------|
| 1 Introduction | 2 |
| 2 Test Setup and Results | 4 |
| 3 Board Layout | 15 |
| 4 Schematic and Bill of Materials | 21 |
| 5 Revision History | 23 |

List of Figures

| | |
|--|----|
| Figure 2-1. TPS568215EVM-762 Efficiency..... | 5 |
| Figure 2-2. TPS568215EVM-762 Low Current Efficiency..... | 5 |
| Figure 2-3. TPS568215EVM-762 Load Regulation, $V_{IN} = 5\text{ V}$ | 6 |
| Figure 2-4. TPS568215EVM-762 Load Regulation, $V_{IN} = 12\text{ V}$ | 6 |
| Figure 2-5. TPS568215EVM-762 Line Regulation..... | 7 |
| Figure 2-6. TPS568215EVM-762 Transient Response..... | 7 |
| Figure 2-7. TPS568215EVM-762 Loop Response..... | 8 |
| Figure 2-8. TPS568215EVM-762 Output Ripple, 10-mA Load..... | 8 |
| Figure 2-9. TPS568215EVM-762 Output Ripple, 700-mA Load..... | 9 |
| Figure 2-10. TPS568215EVM-762 Output Ripple, 8-A Load..... | 9 |
| Figure 2-11. TPS568215EVM-762 Input Ripple, 10-mA Load..... | 10 |
| Figure 2-12. TPS568215EVM-762 Input Ripple, 700-mA Load..... | 10 |
| Figure 2-13. TPS568215EVM-762 Input Ripple, 8-A Load..... | 11 |
| Figure 2-14. TPS568215EVM-762 Start-Up Relative to V_{IN} | 12 |
| Figure 2-15. TPS568215EVM-762 Start-Up Relative to Enable..... | 12 |
| Figure 2-16. Shutdown Relative to V_{IN} | 13 |
| Figure 2-17. Shutdown Relative to Enable..... | 13 |
| Figure 2-18. Thermal Image..... | 14 |
| Figure 3-1. TPS568215EVM-762 Top-Side Assembly..... | 16 |
| Figure 3-2. TPS568215EVM-762 Top-Side Layout..... | 17 |
| Figure 3-3. TPS568215EVM-762 Internal Layer-1 Layout..... | 18 |
| Figure 3-4. TPS568215EVM-762 Internal Layer-2 Layout..... | 19 |
| Figure 3-5. TPS568215EVM-762 Bottom-Side Layout..... | 20 |
| Figure 4-1. TPS568215EVM-762 Schematic..... | 21 |

List of Tables

| | |
|--|----|
| Table 1-1. Input Voltage and Output Current Summary..... | 3 |
| Table 1-2. TPS568215EVM-762 Performance Specification Summary..... | 3 |
| Table 2-1. EVM Connectors and Test Points..... | 4 |
| Table 4-1. TPS568215EVM-762 Bill of Materials..... | 22 |

Trademarks

All trademarks are the property of their respective owners.

1 Introduction

1.1 Before You Begin

The following warnings and cautions are noted for the safety of anyone using or working close to the TPS568215EVM-762. Observe all safety precautions.

**Warning**

The TPS568215EVM-762 circuit module may become hot during operation due to dissipation of heat. Avoid contact with the board. Follow all applicable safety procedures applicable to your laboratory.

**Caution**

Do not leave the EVM powered when unattended.

WARNING

The circuit module has signal traces, components, and component leads on the bottom of the board. This may result in exposed voltages, hot surfaces or sharp edges. Do not reach under the board during operation.

CAUTION

The circuit module may be damaged by over temperature. To avoid damage, monitor the temperature during evaluation and provide cooling, as needed, for your system environment.

CAUTION

Some power supplies can be damaged by application of external voltages. If using more than 1 power supply, check your equipment requirements and use blocking diodes or other isolation techniques, as needed, to prevent damage to your equipment.

CAUTION

The communication interface is not isolated on the EVM. Be sure no ground potential exists between the computer and the EVM. Also be aware that the computer is referenced to the Battery- potential of the EVM.

1.2 Background

The TPS568215 dc/dc converter is a synchronous buck converter designed to provide up to a 8-A output. The input (V_{IN}) is rated for 4.5 V to 17 V. The TPS568215 uses a proprietary DCAP3 Control mode and a MODE pin is used to select output current limit, switching frequency, and *Forced Continuous Conduction Mode* (FCCM)/*Discontinuous Conduction Mode* (DCM) operation. Rated input voltage and output current range for the evaluation module are given in [Table 1-1](#). This evaluation module is designed to demonstrate the small printed-circuit-board areas that may be achieved when designing with the TPS568215 regulator. The MODE pin is configured for 1.2-MHz switching frequency, 8-A and DCM operation. The high-side and low-side MOSFETs are incorporated inside the TPS568215 package along with the gate-drive circuitry. The low drain-to-source on-resistance of the MOSFET allows the TPS568215 to achieve high efficiencies and helps keep the junction temperature low at high output currents. An external divider allows for an adjustable output voltage. Additionally, the TPS568215 provides adjustable slow start and undervoltage lockout inputs and a power good output.

Table 1-1. Input Voltage and Output Current Summary

| EVM | Input Voltage Range | Output Current Range |
|------------------|---|----------------------|
| TPS568215EVM-762 | $V_{IN} = 4.5 \text{ V to } 17 \text{ V}$ | 0 A to 8 A |

1.3 Performance Specification Summary

A summary of the TPS568215EVM-762 performance specifications is provided in [Table 1-2](#). Specifications are given for an input voltage of $V_{IN} = 12 \text{ V}$ and an output voltage of 1.2 V, unless otherwise specified. The TPS568215EVM-762 is designed and tested for $V_{IN} = 4.5 \text{ V to } 17 \text{ V}$. The ambient temperature is 25°C for all measurements, unless otherwise noted.

Table 1-2. TPS568215EVM-762 Performance Specification Summary

| Specification | Test Conditions | MIN | TYP | MAX | Unit |
|-------------------------|---|----------------|-------------------|-----|--------|
| V_{IN} voltage range | | 4.5 | 12 | 17 | V |
| V_{IN} start voltage | | | Internal UVLO | | V |
| V_{IN} stop voltage | | | Internal UVLO | | V |
| Output voltage setpoint | | | 1.2 | | V |
| Output current range | $V_{IN} = 4.5 \text{ V to } 14 \text{ V}$ | 0 | | 8 | A |
| Line regulation | $I_O = 4 \text{ A}, V_{IN} = 4.5 \text{ V to } 17 \text{ V}$ | | -0.02%, +0.08% | | |
| Load regulation | $V_{IN} = 12 \text{ V}, I_O = 0 \text{ A to } 8 \text{ A}$ | | -0.02%, +0.15% | | |
| Load transient response | $I_O = 2 \text{ A to } 6 \text{ A}$ | Voltage change | -25 | | mV |
| | | Recovery time | 50 | | μs |
| | $I_O = 6 \text{ A to } 2 \text{ A}$ | Voltage change | 25 | | mV |
| | | Recovery time | 50 | | μs |
| Loop bandwidth | $V_{IN} = 12 \text{ V}, I_O = 4 \text{ A}$ | | 170 | | kHz |
| Phase margin | $V_{IN} = 12 \text{ V}, I_O = 4 \text{ A}$ | | 70 | | degree |
| Input ripple voltage | $I_O = 8 \text{ A}$ | | 80 | | mVPP |
| Output ripple voltage | $I_O = 8 \text{ A}$ | | 10 | | mVPP |
| Output rise time | | | 6 | | ms |
| Operating frequency | | | 1.2 | | MHz |
| Maximum efficiency | TPS568215EVM-762, $V_{IN} = 5 \text{ V}, I_O = 2.4 \text{ A}$ | | 90.47% | | |

1.4 Modifications

These evaluation modules are designed to provide access to the features of the TPS568215. Some modifications can be made to this module.

1.4.1 Output Voltage Setpoint

The output voltage is set by the resistor divider network of R7 ($R_{(TOP)}$) and R9 ($R_{(BOT)}$). R9 is fixed at 10.0 k Ω . To change the output voltage of the EVM, it is necessary to change the value of resistor R7. Changing the value of R9 can change the output voltage above the 0.6-V reference voltage V_{REF} . The value of R7 for a specific output voltage can be calculated using [Equation 1](#).

$$R_{(TOP)} = \frac{R_{(BOT)} \times (V_{OUT} - V_{REF})}{V_{REF}} \quad (1)$$

1.4.2 Adjustable UVLO

The undervoltage lockout (UVLO) can be adjusted externally using R1 ($R_{EN(TOP)}$) and R2 ($R_{EN(BOT)}$). R1 and R2 are not populated on the EVM, which uses the internal UVLO default settings. See the TPS568215 datasheet ([SLVSDI8](#)) for detailed instructions for setting the external UVLO.

2 Test Setup and Results

This section describes how to properly connect, set up, and use the TPS568215EVM-762 evaluation module. The section also includes test results typical for the evaluation module and covers efficiency, output voltage regulation, load transients, loop response, output ripple, input ripple, and start-up.

2.1 Input/Output Connections

The TPS568215EVM-762 is provided with input/output connectors and test points as shown in [Table 2-1](#). A power supply capable of supplying greater than 4 A must be connected to J1 through a pair of 20-AWG wires or better. The load must be connected to J2 through a pair of 20-AWG wires or better. The maximum load current capability is 8 A. Wire lengths must be minimized to reduce losses in the wires. Test point TP1 provides a place to monitor the V_{IN} input voltages with TP2 providing a convenient ground reference. TP9 is used to monitor the output voltage with TP10 as the ground reference.

Table 2-1. EVM Connectors and Test Points

| Reference Designator | Function |
|----------------------|--|
| J1 | VIN input voltage connector. (See Table 1-1 for V_{IN} range) |
| J2 | 1.2 V at 8 A maximum |
| J3 | 2-pin header for enable. Connect EN to ground to disable, open to enable V_{OUT} . |
| TP1 | VIN test point |
| TP2 | GND test point at VIN connector |
| TP3 | Slow Start (SS) test point |
| TP4 | PGOOD test point |
| TP5 | VREG5 test point |
| TP6 | AGND test point |
| TP7 | SW node test point |
| TP8 | Test point between voltage divider network and output. Used for loop response measurements |
| TP9 | VOUT test point |
| TP10 | GND test point |

2.2 Efficiency

The efficiency of this EVM peaks at a load current of about 2.4 A and then decreases as the load current increases toward full load. Figure 2-1 shows the efficiency for the TPS568215EVM-762 at an ambient temperature of 25°C.

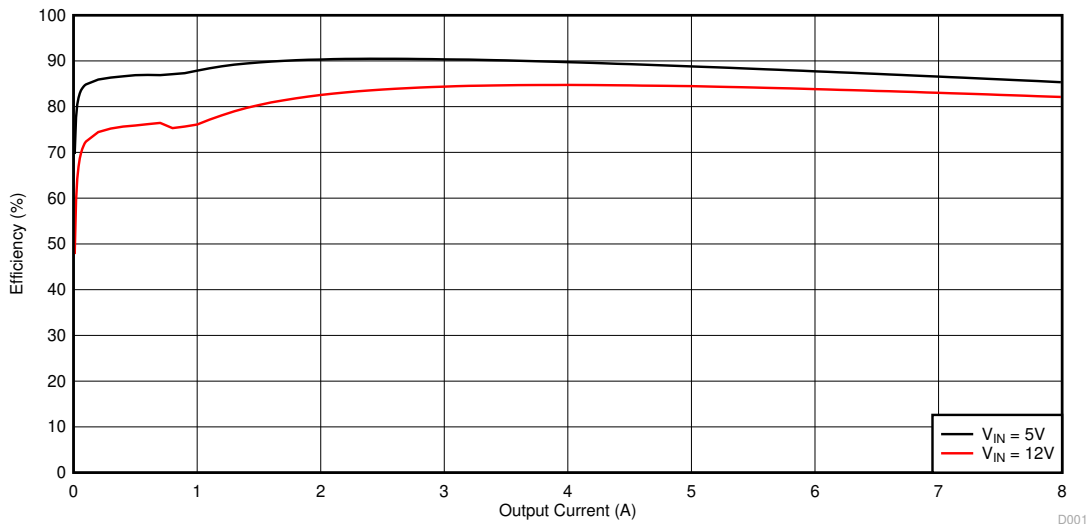


Figure 2-1. TPS568215EVM-762 Efficiency

Figure 2-2 shows the efficiency for the TPS568215EVM-762 using a semi-log scale to more easily show efficiency at lower output currents. The ambient temperature is 25°C.

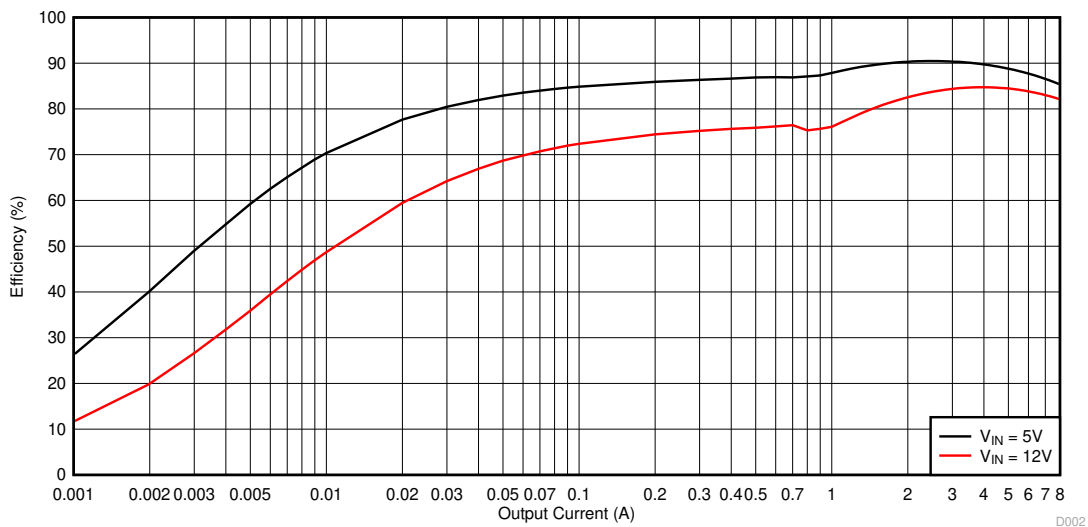


Figure 2-2. TPS568215EVM-762 Low Current Efficiency

The efficiency may be lower at higher ambient temperatures, due to temperature variation in the drain-to-source resistance of the internal MOSFET.

2.3 Output Voltage Load Regulation

Figure 2-3 and Figure 2-4 show the load regulation for the TPS568215EVM-762.

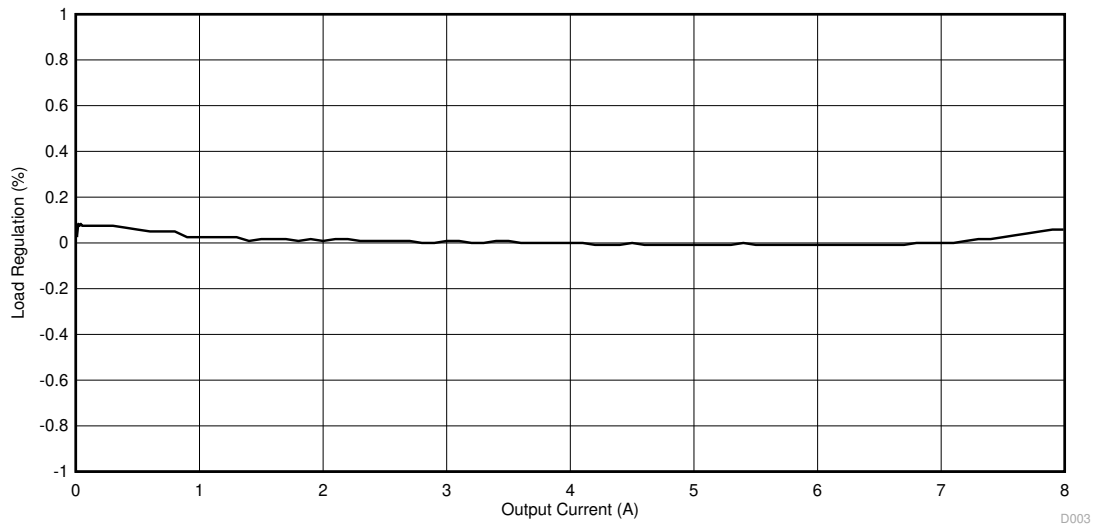


Figure 2-3. TPS568215EVM-762 Load Regulation, $V_{IN} = 5\text{ V}$

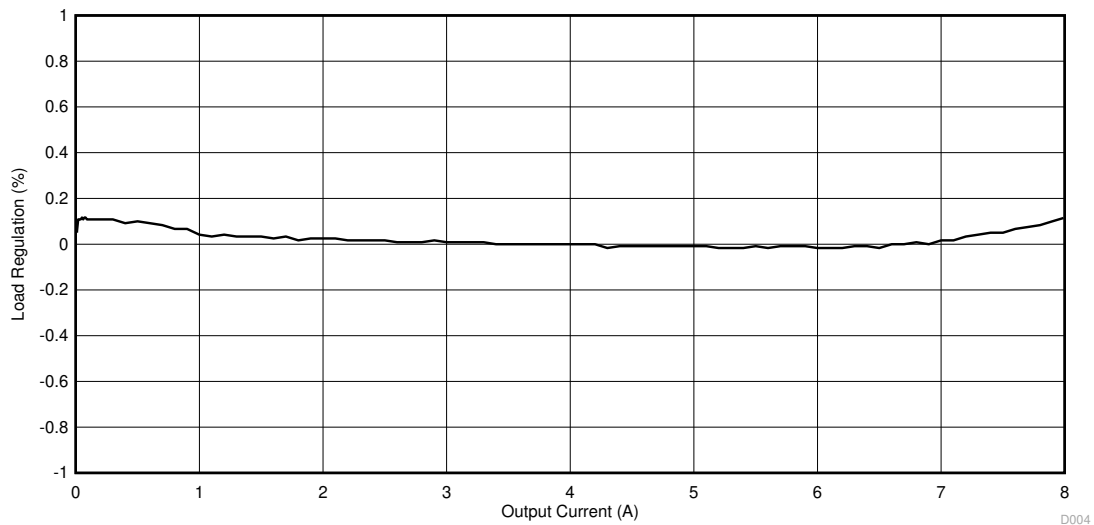


Figure 2-4. TPS568215EVM-762 Load Regulation, $V_{IN} = 12\text{ V}$

Measurements are given for an ambient temperature of 25°C.

2.4 Output Voltage Line Regulation

Figure 2-5 shows the line regulation for the TPS568215EVM-762.

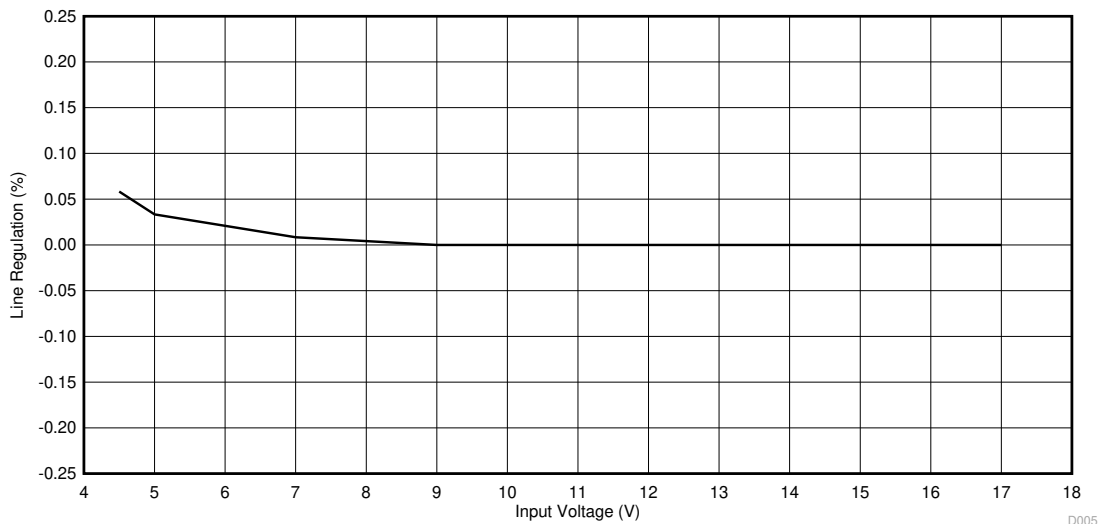


Figure 2-5. TPS568215EVM-762 Line Regulation

2.5 Load Transients

Figure 2-6 shows the TPS568215EVM-762 response to load transients. The current step is from 2 A to 6 A. The current step slew rate is 500 mA/μs. Total peak-to-peak voltage variation is as shown, including ripple and noise on the output. The transient waveform is measured using the on-board fast transient circuit.

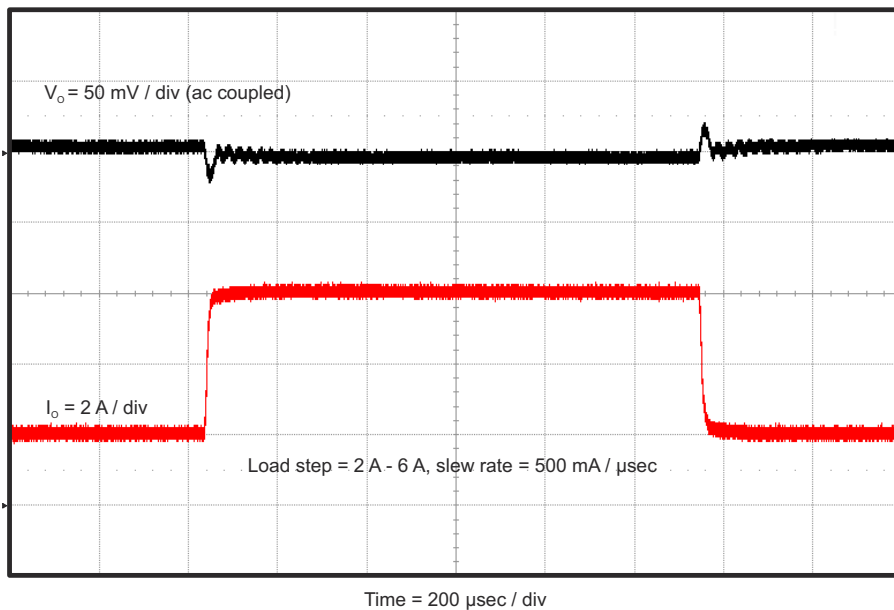


Figure 2-6. TPS568215EVM-762 Transient Response

2.6 Loop Characteristics

Figure 2-7 shows the TPS568215EVM-762 loop-response characteristics. Gain and phase plots are shown for V_{IN} voltage of 12 V. Load current for the measurement is 4 A.

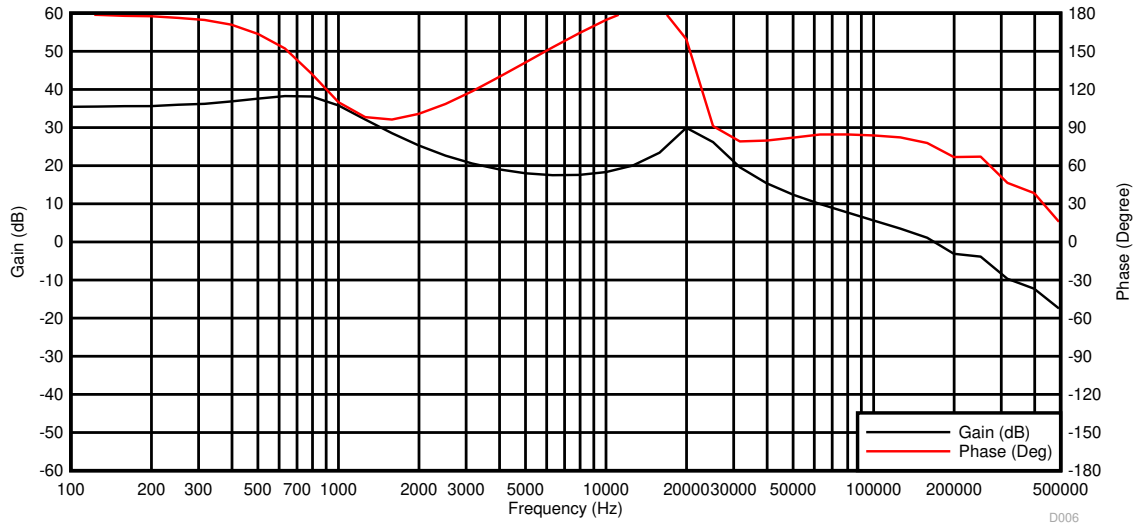


Figure 2-7. TPS568215EVM-762 Loop Response

2.7 Output Voltage Ripple

Figure 2-8, Figure 2-9, and Figure 2-10 show the TPS568215EVM-762 output voltage ripple. The load currents are 10 mA, 700 mA, and 8 A. $V_{IN} = 12$ V. The ripple voltage is measured directly across TP9 and TP10.

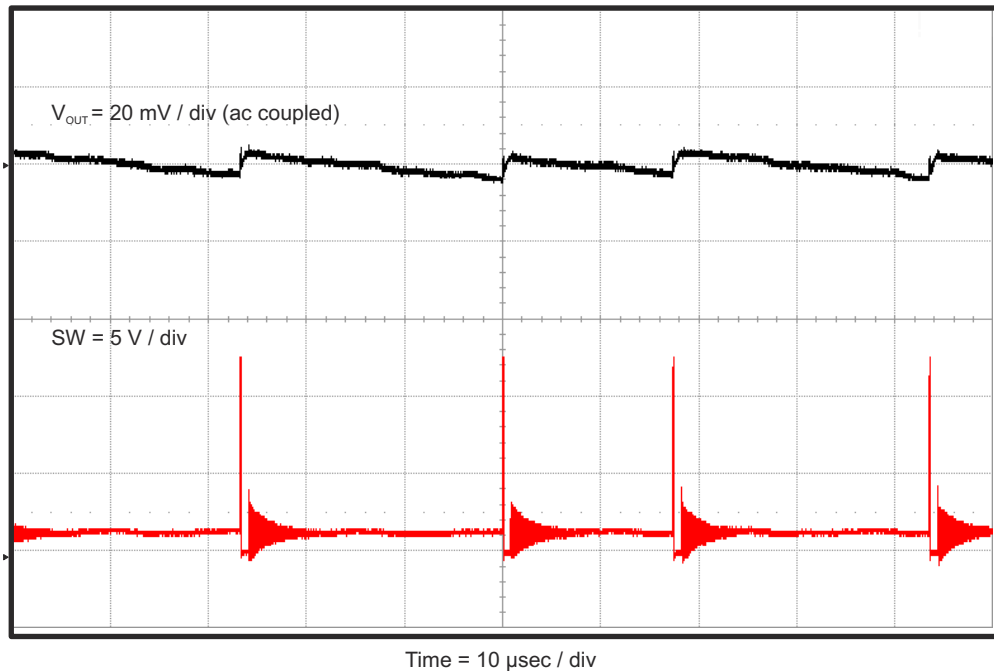


Figure 2-8. TPS568215EVM-762 Output Ripple, 10-mA Load

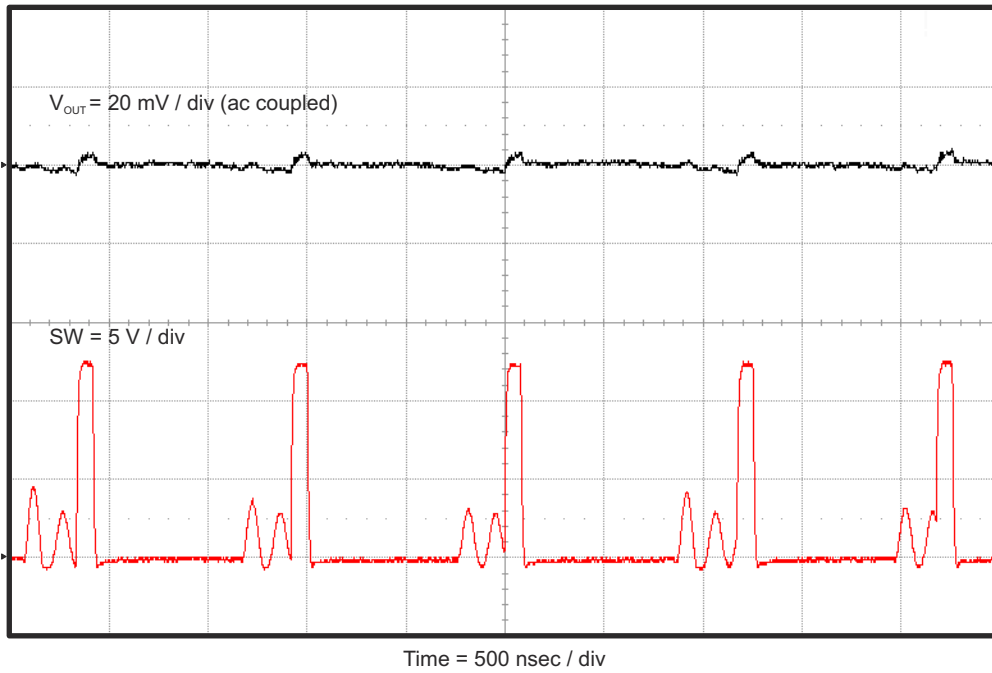


Figure 2-9. TPS568215EVM-762 Output Ripple, 700-mA Load

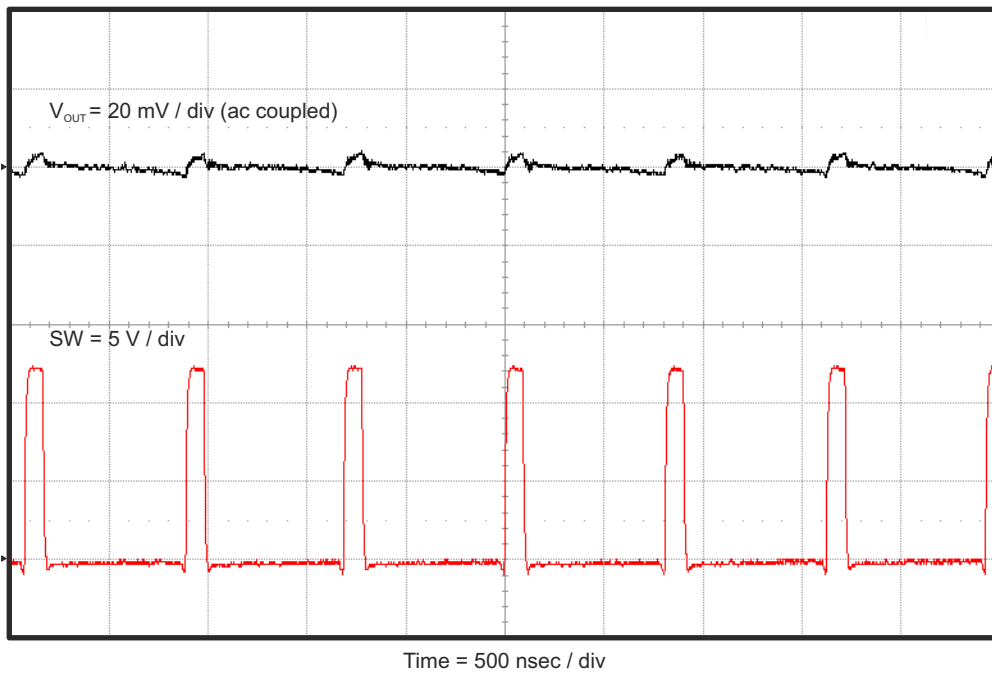


Figure 2-10. TPS568215EVM-762 Output Ripple, 8-A Load

2.8 Input Voltage Ripple

Figure 2-11, Figure 2-12, and Figure 2-13 show the TPS568215EVM-762 input voltage ripple. The load currents are 10 mA, 700 mA and 8 A. $V_{IN} = 12$ V. The ripple voltage is measured directly across TP1 and TP2.

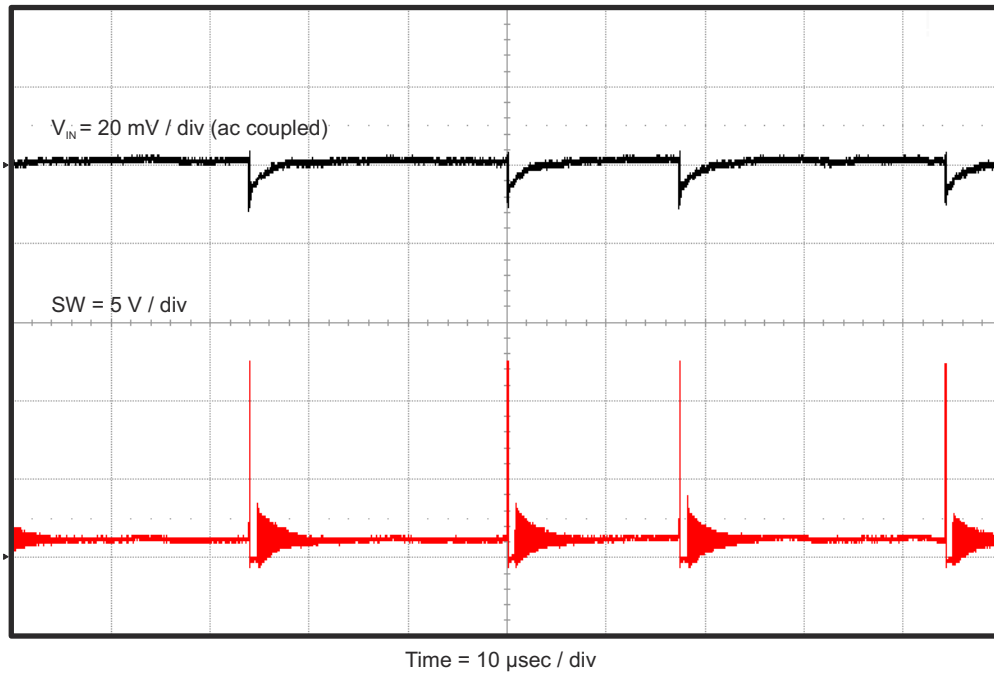


Figure 2-11. TPS568215EVM-762 Input Ripple, 10-mA Load

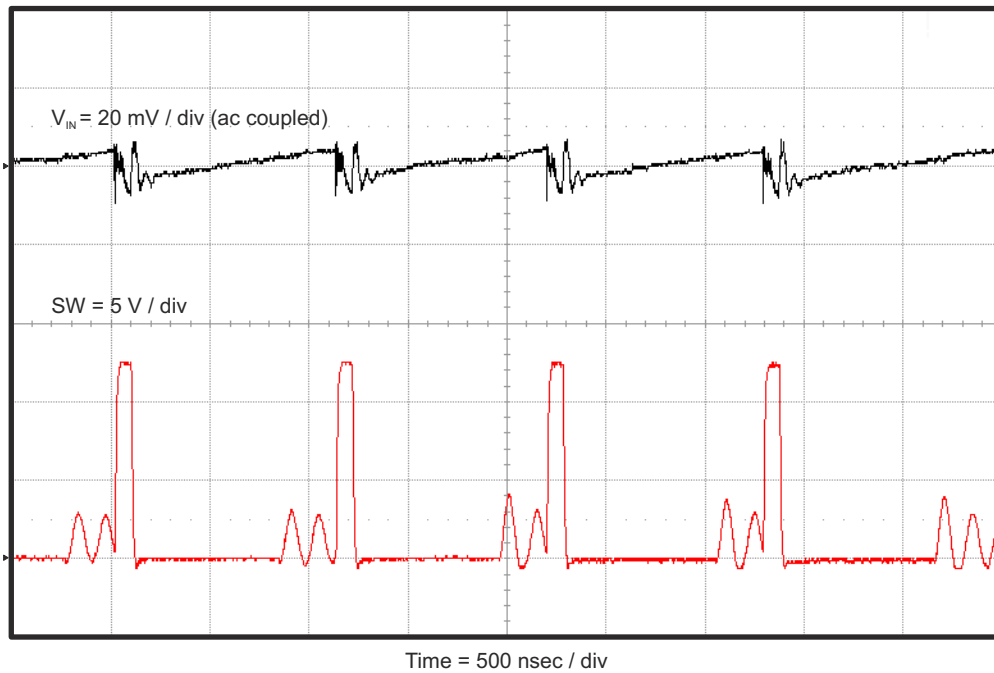


Figure 2-12. TPS568215EVM-762 Input Ripple, 700-mA Load

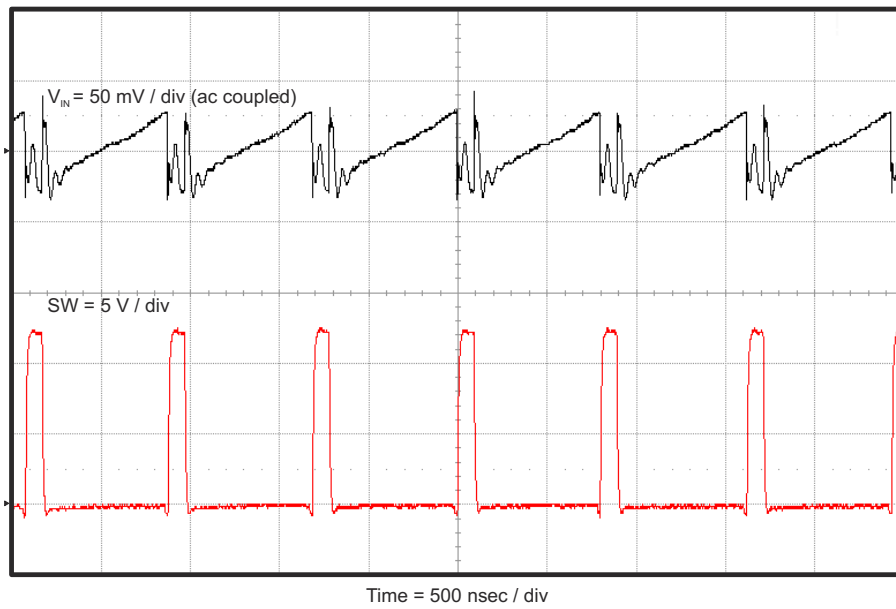


Figure 2-13. TPS568215EVM-762 Input Ripple, 8-A Load

2.9 Powering Up

Figure 2-14 and Figure 2-15 show the start-up waveforms for the TPS568215EVM-762. In Figure 2-14, the output voltage ramps up as soon as the input voltage reaches the UVLO threshold. In Figure 2-15, the input voltage is initially applied and the output is inhibited by using a jumper at J3 to tie EN to GND. When the jumper is removed, EN is released. When the EN voltage reaches the enable-threshold voltage, the start-up sequence begins and the output voltage ramps up to the externally-set value of 1.2 V. The input voltage for these plots is 12 V and the load is 1 Ω .

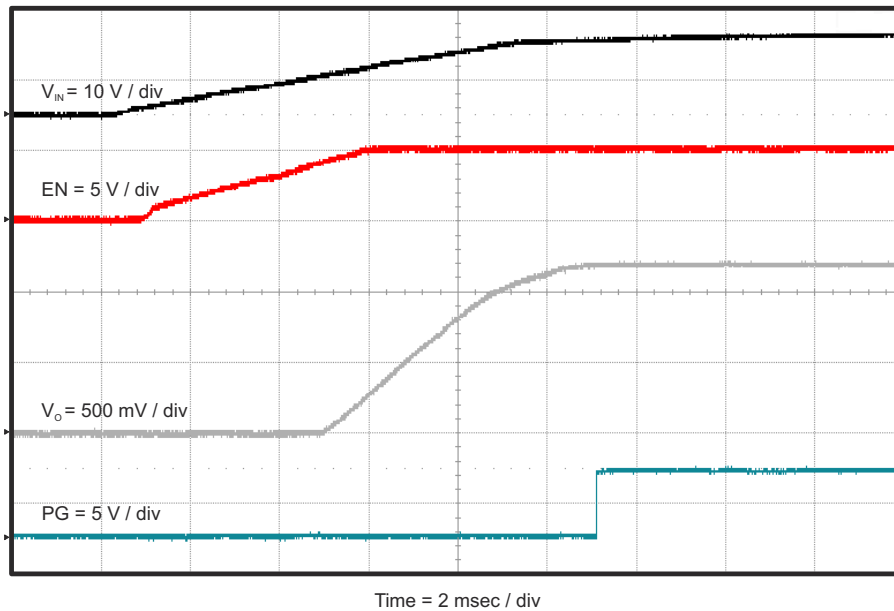


Figure 2-14. TPS568215EVM-762 Start-Up Relative to V_{IN}

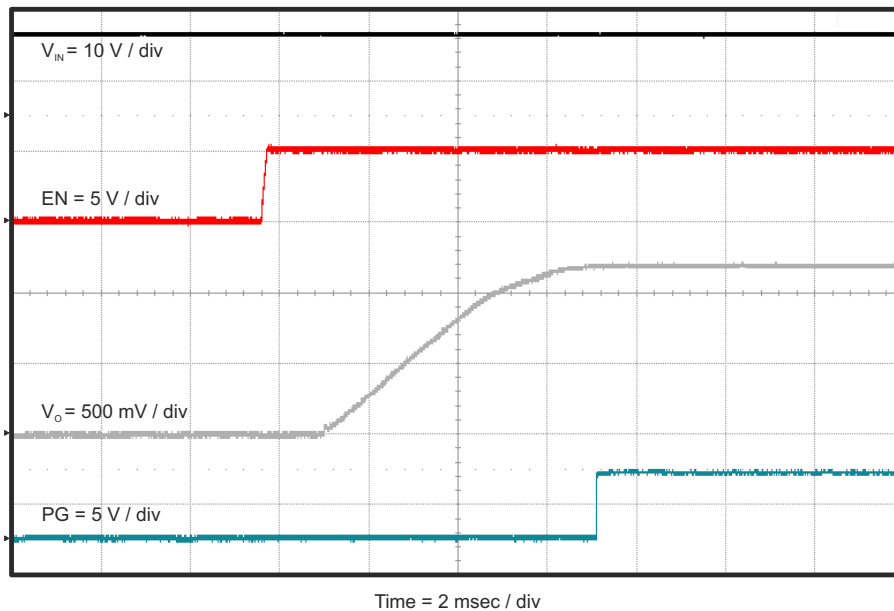


Figure 2-15. TPS568215EVM-762 Start-Up Relative to Enable

2.10 Powering Down

Figure 2-16 and Figure 2-17 show the shutdown waveforms for the TPS568215EVM-762. The input voltage for these plots is 12 V and the load is 1 Ω .

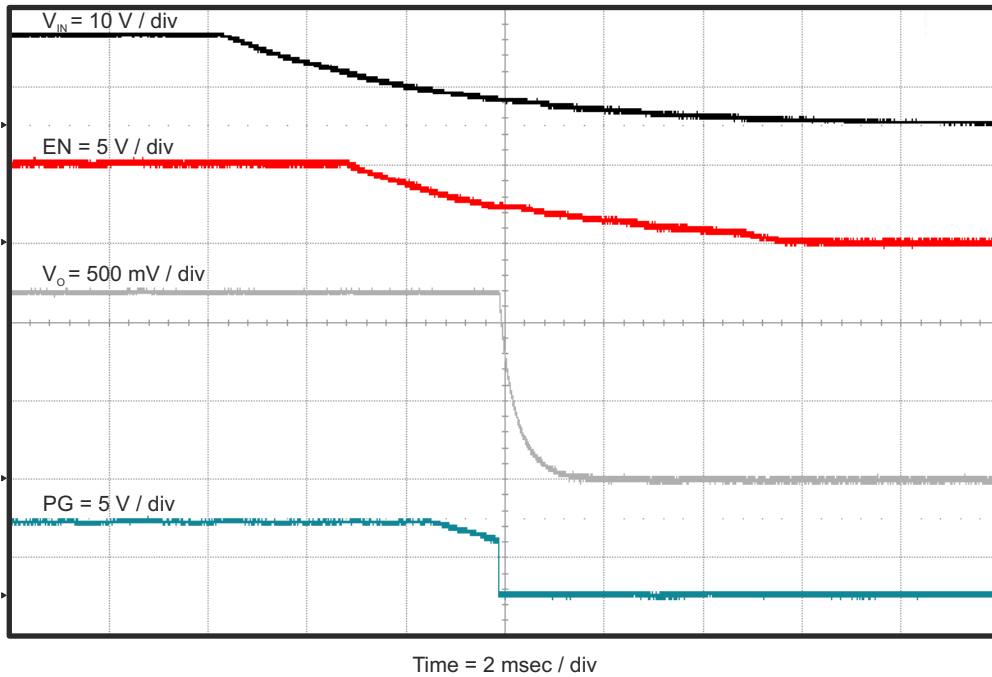


Figure 2-16. Shutdown Relative to V_{IN}

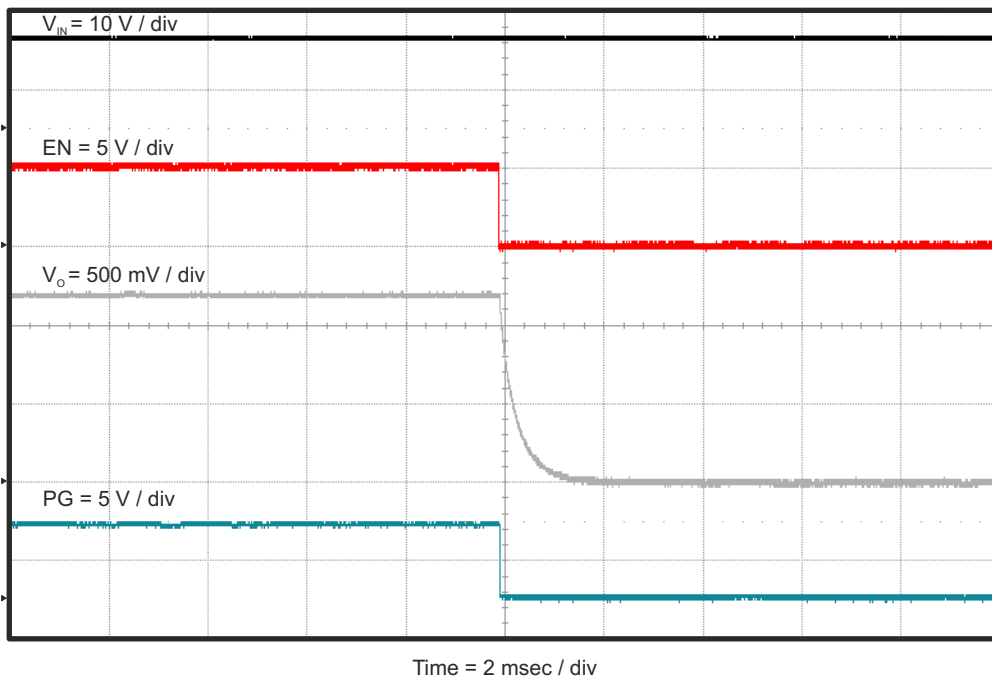


Figure 2-17. Shutdown Relative to Enable

2.11 Thermal Image

The thermal image in [Figure 2-18](#) shows the EVM with 12-V input and full load of 8 A.

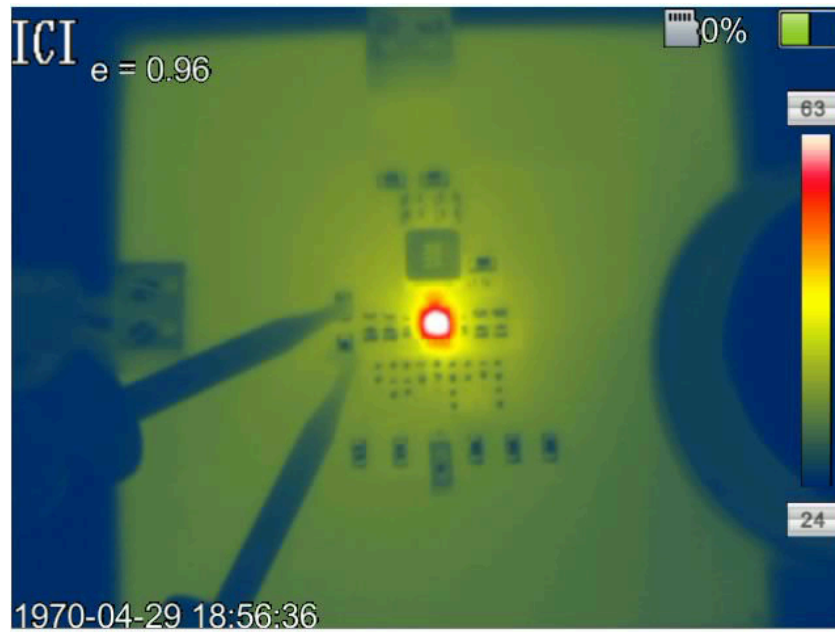


Figure 2-18. Thermal Image

3 Board Layout

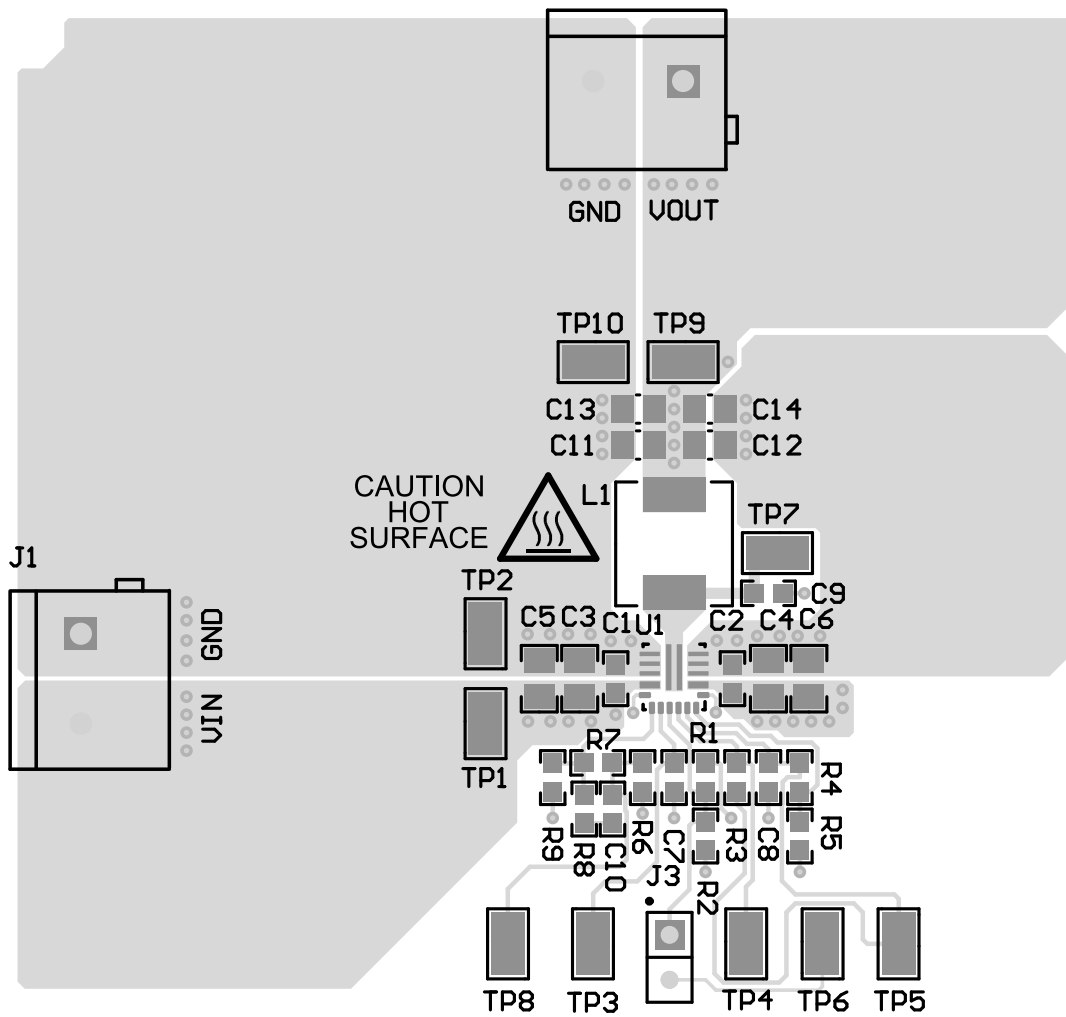
This section provides a description of the TPS568215EVM-762 board layout and layer illustrations.

3.1 Layout

The board layout for the TPS568215EVM-762 is shown in [Figure 3-1](#) through [Figure 3-5](#). The top-side layer of the EVM is laid out in a manner typical of a user application. The top, bottom, and internal layers are 2-oz. copper.

The top layer contains the main power traces for VIN, VOUT, and SW. Also on the top layer are connections for the remaining pins of the TPS568215 and the majority of the signal traces. There is a large area filled with ground. The internal layer-1 is dedicated ground plane with an island for quiet analog ground that is connected to the main power ground plane at a single point. The internal layer-2 contains an additional large ground copper area as well as an additional VIN and VOUT copper fill. The bottom layer is another ground plane with two additional traces for the output voltage feedback and BST capacitor connection. The top-side ground traces are connected to the bottom and internal ground planes with multiple vias placed around the board.

The input decoupling capacitors and bootstrap capacitor are all located as close to the IC as possible. Additionally, the voltage setpoint resistor divider components are kept close to the IC. The voltage divider network ties to the output voltage at the point of regulation, the copper V_{OUT} trace at the TP9 test point. For the TPS568215, an additional input bulk capacitor may be required, depending on the EVM connection to the input supply. Critical analog circuits such as the voltage set point divider, EN resistor, SS capacitor, MODE resistor, and AGND pin are terminated to quiet analog ground island on the internal layer-1.



PWR762 B



For evaluation only; not FCC approved for resale.

Figure 3-1. TPS568215EVM-762 Top-Side Assembly

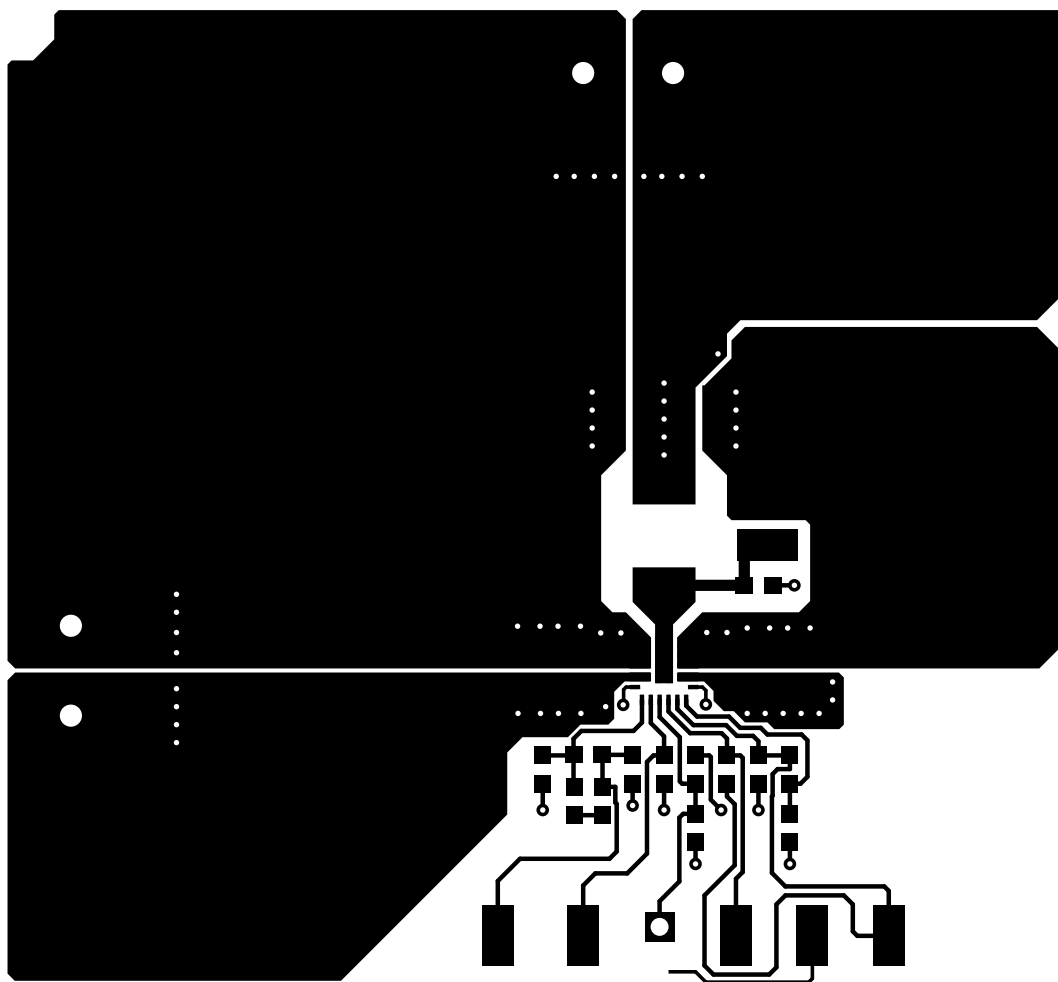


Figure 3-2. TPS568215EVM-762 Top-Side Layout

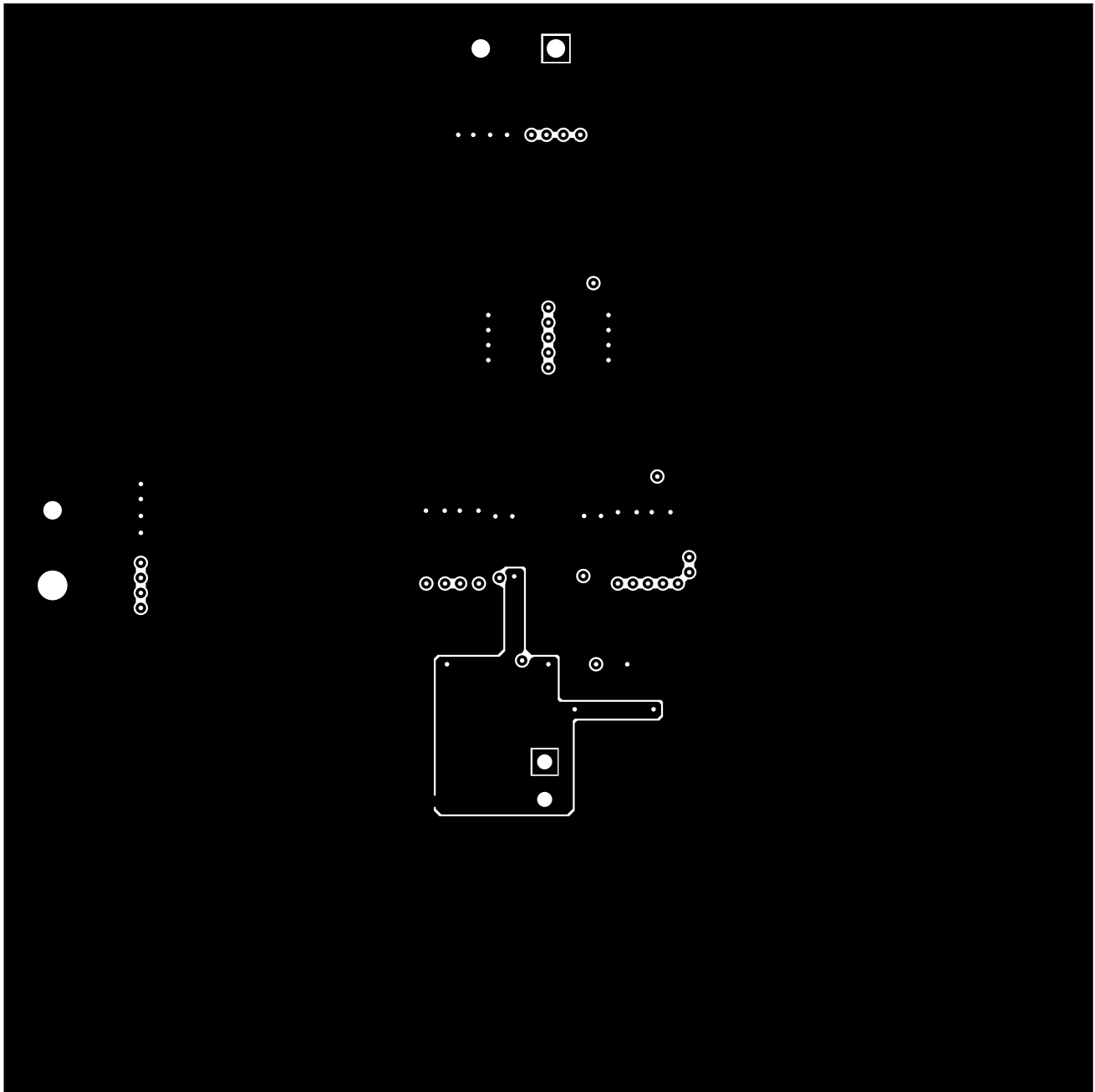


Figure 3-3. TPS568215EVM-762 Internal Layer-1 Layout

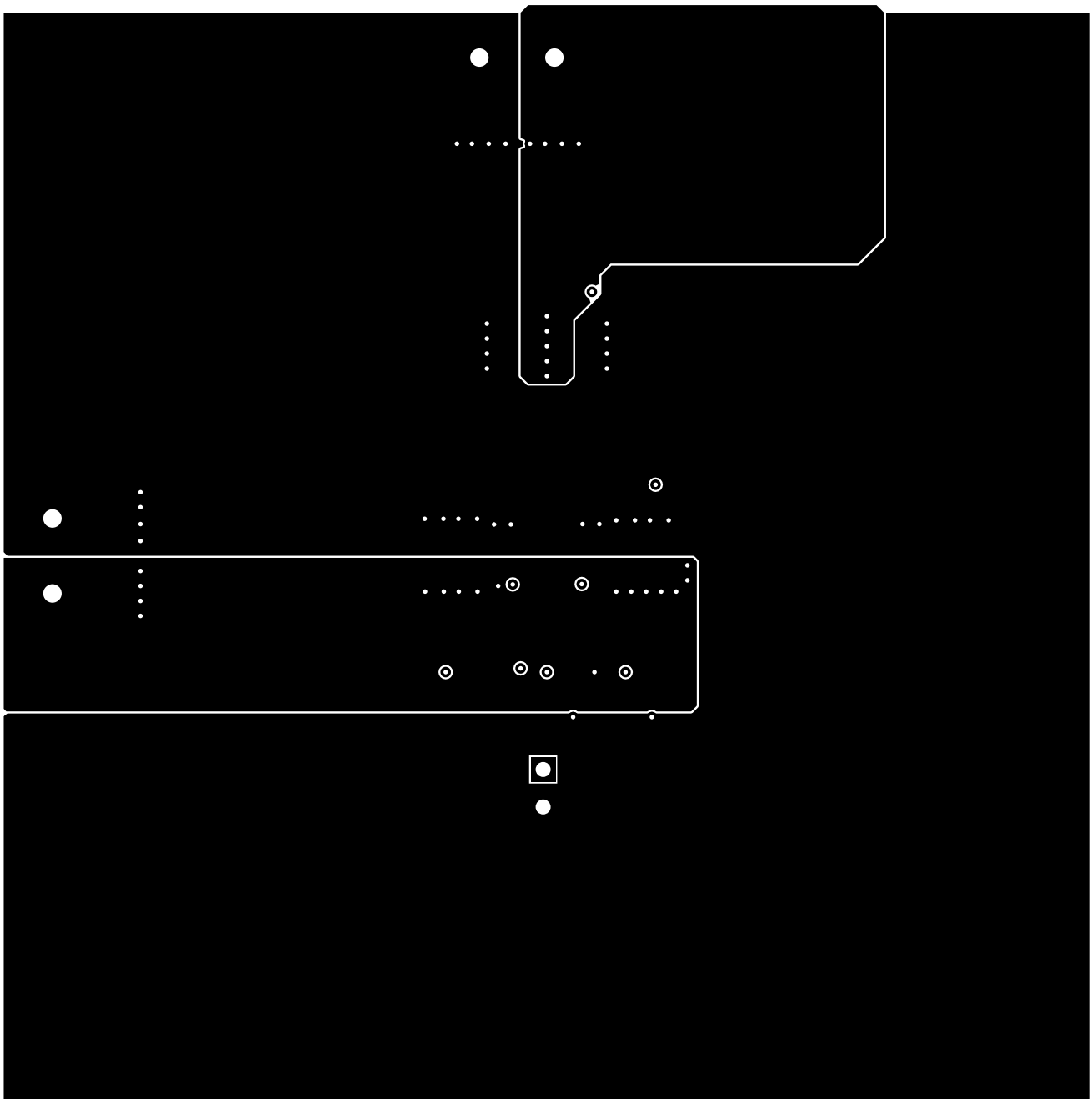


Figure 3-4. TPS568215EVM-762 Internal Layer-2 Layout

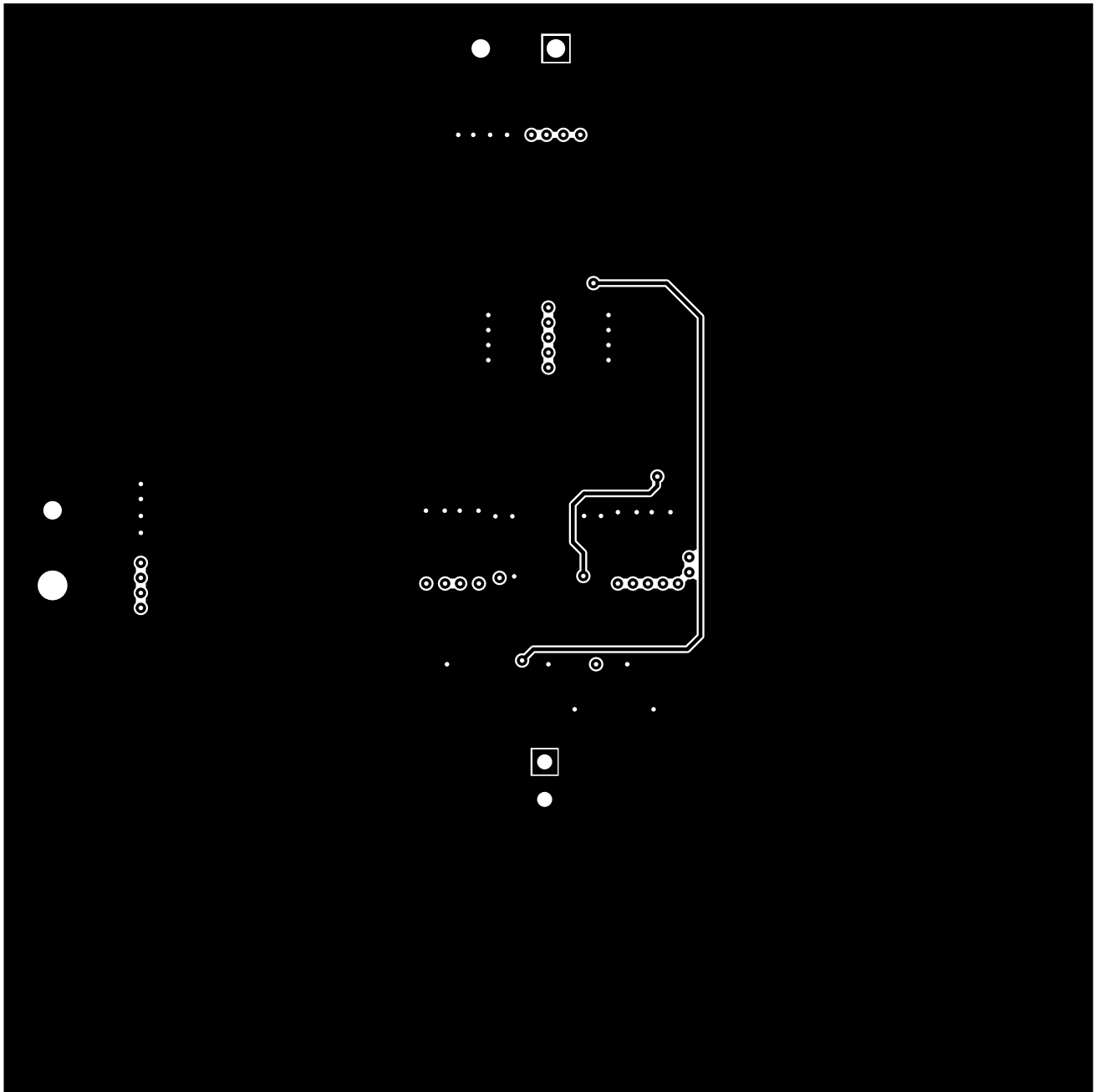


Figure 3-5. TPS568215EVM-762 Bottom-Side Layout

4 Schematic and Bill of Materials

This section presents the TPS568215EVM-762 schematic and bill of materials.

4.1 Schematic

Figure 4-1 is the schematic for the TPS568215EVM-762.

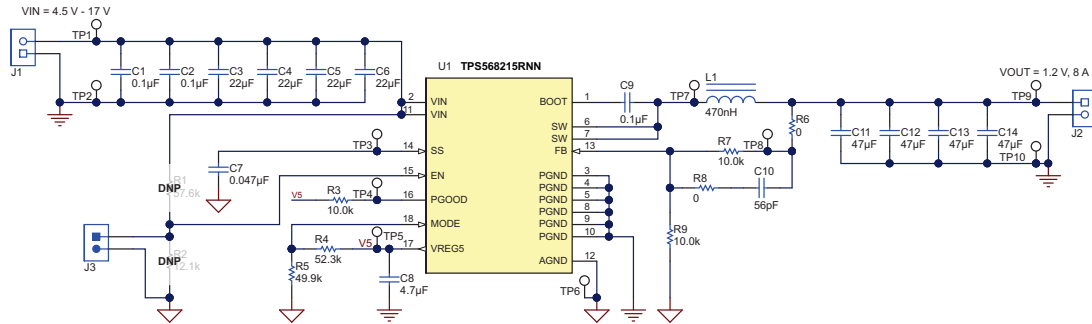


Figure 4-1. TPS568215EVM-762 Schematic

4.2 Bill of Materials

Table 4-1 presents the bill of materials for the TPS568215EVM-762.

Table 4-1. TPS568215EVM-762 Bill of Materials

| Designator | Qty | Value | Description | Package Reference | Part Number | Manufacturer |
|---|-----|---------|---|------------------------------|---------------------|---------------------|
| !PCB1 | 1 | | Printed Circuit Board | | PWR762 | Any |
| C1, C2, C9 | 3 | 0.1uF | CAP, CERM, 0.1 μ F, 25 V, +/- 10%, X7R, 0603 | 0603 | GRM188R71E104KA01D | Murata |
| C3, C4, C5, C6 | 4 | 22uF | CAP, CERM, 22 μ F, 35 V, +/- 20%, X5R, 0805 | 0805 | C2012X5R1V226M125AC | TDK |
| C7 | 1 | 0.047uF | CAP, CERM, 0.047 μ F, 50 V, +/- 10%, X7R, 0603 | 0603 | GRM188R71H473KA61D | Murata |
| C8 | 1 | 4.7uF | CAP, CERM, 4.7 μ F, 10 V, +/- 20%, X5R, 0603 | 0603 | GRM188R61A475ME15 | Murata |
| C10 | 1 | 56pF | CAP, CERM, 56 pF, 50 V, +/- 5%, C0G/NP0, 0603 | 0603 | GRM1885C1H560JA01D | Murata |
| C11, C12, C13, C14 | 4 | 47uF | CAP, CERM, 47 μ F, 10 V, +/- 20%, X5R, 0805 | 0805 | GRM21BR61A476ME15 | Murata |
| J1, J2 | 2 | | TERMINAL BLOCK 5.08MM VERT 2POS, TH | | ED120/2DS | On-Shore Technology |
| J3 | 1 | | Header, 100mil, 2x1, Gold, TH | | HTSW-102-07-G-S | Samtec |
| L1 | 1 | 470nH | Inductor, Shielded Drum Core, Powdered Iron, 470 nH, 17.5 A, 0.004 ohm, SMD | IHLP-2525CZ | IHLP2525CZERR47M01 | Vishay-Dale |
| LBL1 | 1 | | Thermal Transfer Printable Labels, 1.250" W x 0.250" H - 10,000 per roll | PCB Label 1.25"H x 0.250"W | THT-13-457-10 | Brady |
| R3, R7, R9 | 3 | 10.0k | RES, 10.0 k, 1%, 0.1 W, 0603 | 0603 | CRCW060310K0FKEA | Vishay-Dale |
| R4 | 1 | 52.3k | RES, 52.3 k, 1%, 0.1 W, 0603 | 0603 | CRCW060352K3FKEA | Vishay-Dale |
| R5 | 1 | 49.9k | RES, 49.9 k, 1%, 0.1 W, 0603 | 0603 | CRCW060349K9FKEA | Vishay-Dale |
| R6, R8 | 2 | 0 | RES, 0, 5%, 0.1 W, 0603 | 0603 | MCR03EZPJ000 | Rohm |
| SH-J3 | 1 | 1x2 | Shunt, 100mil, Gold plated, Black | Shunt | 969102-0000-DA | 3M |
| TP1, TP2, TP3, TP4, TP5, TP6, TP7, TP8, TP9, TP10 | 10 | SMT | Test Point, Miniature, SMT | Testpoint_Keystone_Miniature | 5015 | Keystone |
| U1 | 1 | | 4.5V to 17V Input, 8A Synchronous Step-Down Converter, RNN0017A | RNN0017A | TPS568215RNN | Texas Instruments |
| FID1, FID2, FID3 | 0 | | Fiducial mark. There is nothing to buy or mount. | Fiducial | N/A | N/A |
| R1 | 0 | 57.6k | RES, 57.6 k, 1%, 0.1 W, 0603 | 0603 | CRCW060357K6FKEA | Vishay-Dale |
| R2 | 0 | 12.1k | RES, 12.1 k, 1%, 0.1 W, 0603 | 0603 | CRCW060312K1FKEA | Vishay-Dale |

5 Revision History

NOTE: Page numbers for previous revisions may differ from page numbers in the current version.

| Changes from Revision * (October 2016) to Revision A (June 2021) | Page |
|--|-------------------|
| • Updated user's guide title..... | 2 |
| • Updated the numbering format for tables, figures, and cross-references throughout the document. | 2 |

IMPORTANT NOTICE AND DISCLAIMER

TI PROVIDES TECHNICAL AND RELIABILITY DATA (INCLUDING DATA SHEETS), DESIGN RESOURCES (INCLUDING REFERENCE DESIGNS), APPLICATION OR OTHER DESIGN ADVICE, WEB TOOLS, SAFETY INFORMATION, AND OTHER RESOURCES "AS IS" AND WITH ALL FAULTS, AND DISCLAIMS ALL WARRANTIES, EXPRESS AND IMPLIED, INCLUDING WITHOUT LIMITATION ANY IMPLIED WARRANTIES OF MERCHANTABILITY, FITNESS FOR A PARTICULAR PURPOSE OR NON-INFRINGEMENT OF THIRD PARTY INTELLECTUAL PROPERTY RIGHTS.

These resources are intended for skilled developers designing with TI products. You are solely responsible for (1) selecting the appropriate TI products for your application, (2) designing, validating and testing your application, and (3) ensuring your application meets applicable standards, and any other safety, security, regulatory or other requirements.

These resources are subject to change without notice. TI grants you permission to use these resources only for development of an application that uses the TI products described in the resource. Other reproduction and display of these resources is prohibited. No license is granted to any other TI intellectual property right or to any third party intellectual property right. TI disclaims responsibility for, and you will fully indemnify TI and its representatives against, any claims, damages, costs, losses, and liabilities arising out of your use of these resources.

TI's products are provided subject to [TI's Terms of Sale](#) or other applicable terms available either on ti.com or provided in conjunction with such TI products. TI's provision of these resources does not expand or otherwise alter TI's applicable warranties or warranty disclaimers for TI products.

TI objects to and rejects any additional or different terms you may have proposed.

Mailing Address: Texas Instruments, Post Office Box 655303, Dallas, Texas 75265
Copyright © 2022, Texas Instruments Incorporated