

A

B

C

D

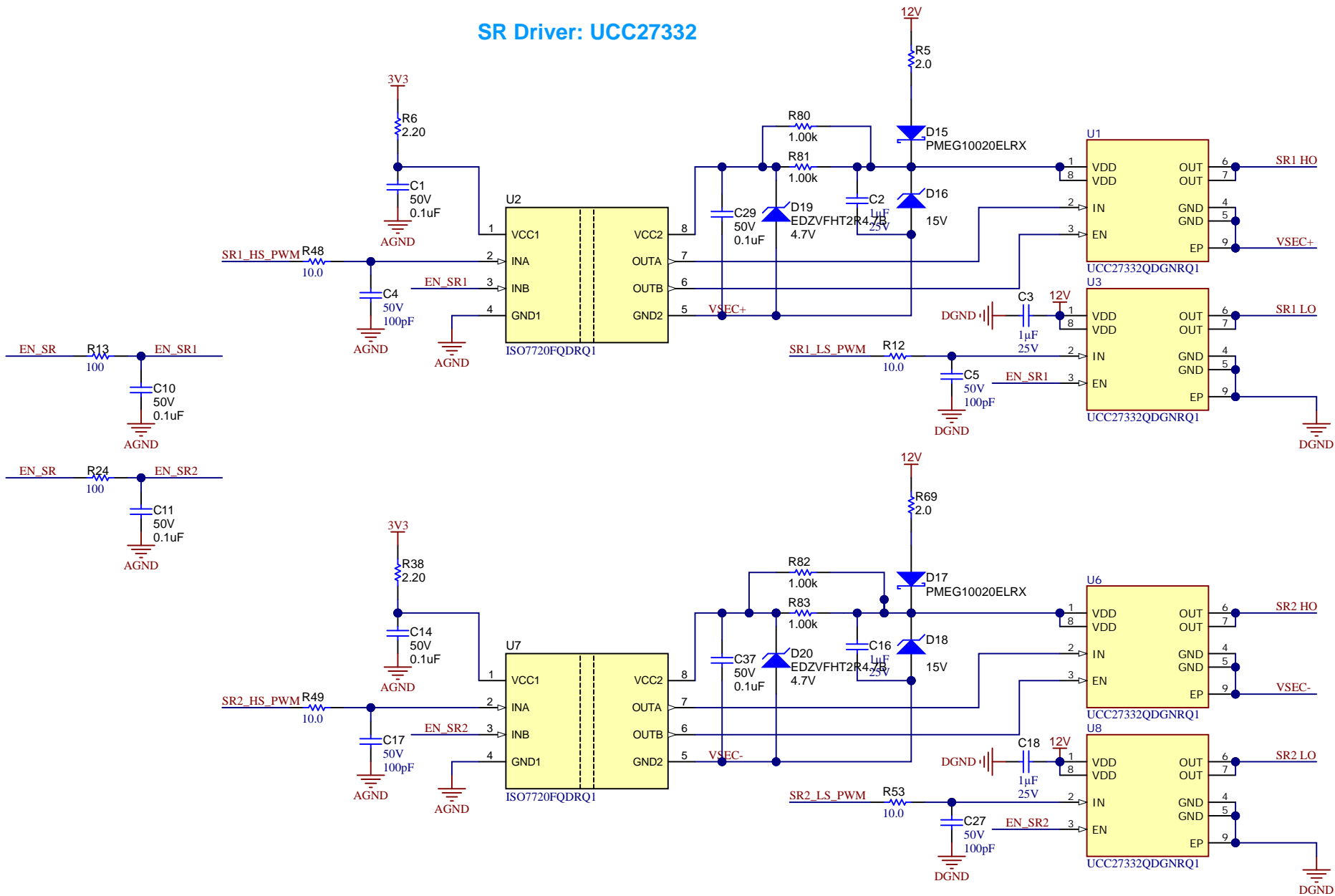
A

B

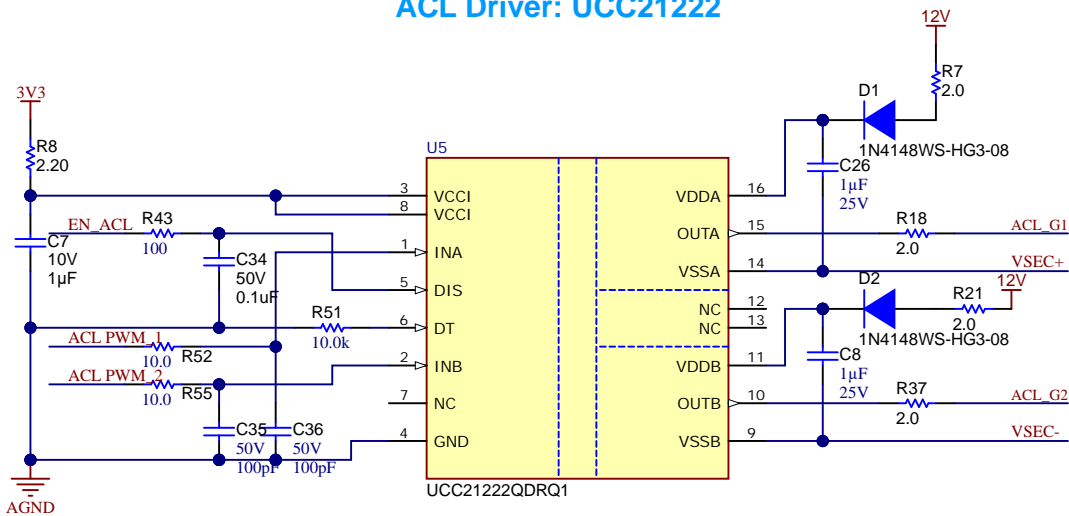
C

D

Revision History				
Rev	ECN #	Approved Date	Approved by	Notes
N/A	N/A	N/A	N/A	N/A



ACL Driver: UCC21222

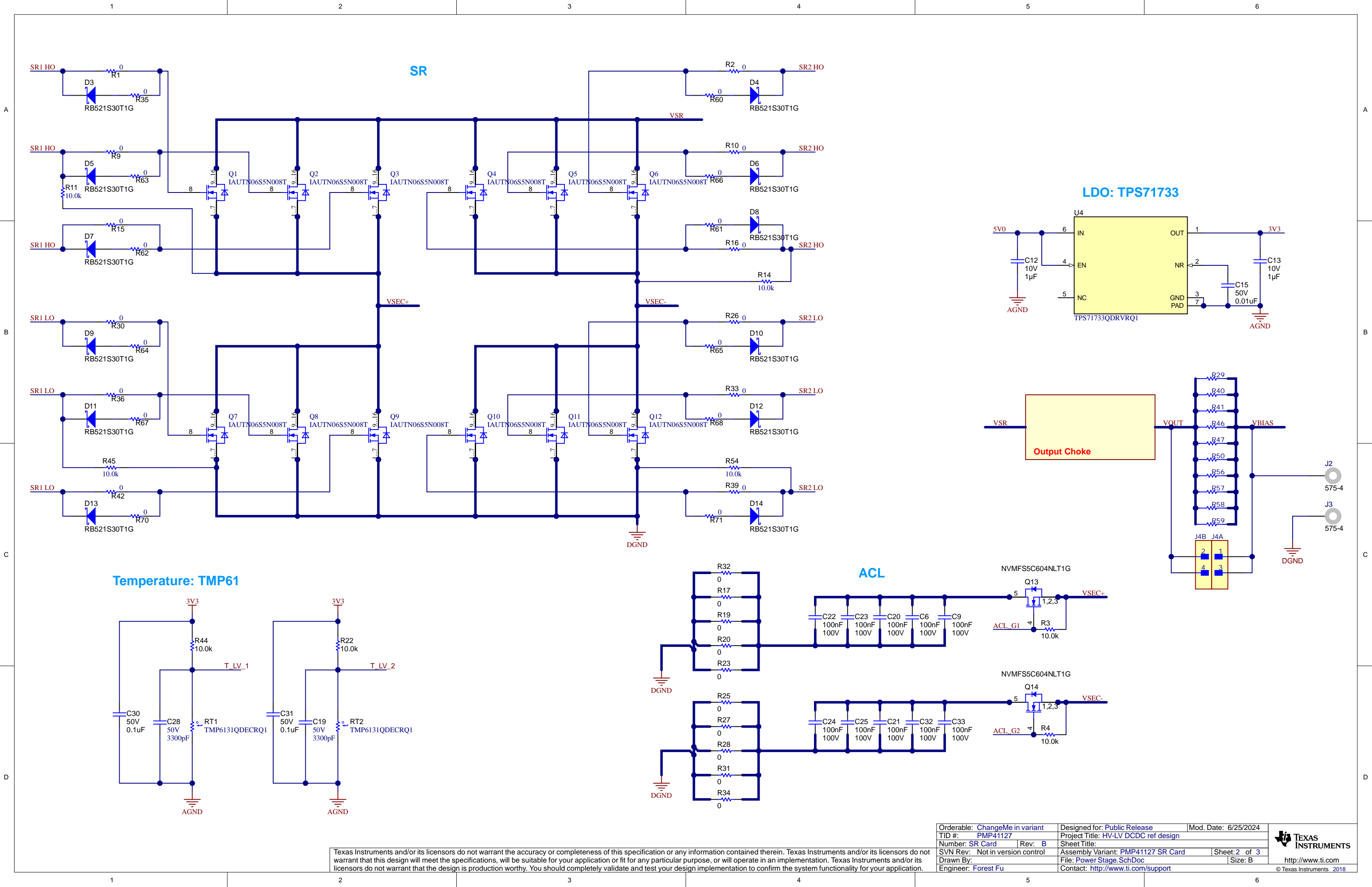


Texas Instruments and/or its licensors do not warrant the accuracy or completeness of this specification or any information contained therein. Texas Instruments and/or its licensors do not warrant that this design will meet the specifications, will be suitable for your application or fit for any particular purpose, or will operate in an implementation. Texas Instruments and/or its licensors do not warrant that the design is production worthy. You should completely validate and test your design implementation to confirm the system functionality for your application.

Orderable: <a href="#">ChangeMe in variant</a>	Designed for: <a href="#">Public Release</a>	Mod. Date: <a href="#">6/27/2024</a>
TID #: <a href="#">PMP41127</a>	Project Title: <a href="#">HV-LV DCDC ref design</a>	
Number: <a href="#">SR Card</a>	Rev: <a href="#">B</a>	Sheet Title:
SVN Rev: <a href="#">Not in version control</a>	Assembly Variant: <a href="#">PMP41127 SR Card</a>	Sheet: <a href="#">1</a> of <a href="#">3</a>
Drawn By:	File: <a href="#">Driver.SchDoc</a>	Size: <a href="#">B</a>
Engineer: <a href="#">Forest Fu</a>	Contact: <a href="#">http://www.ti.com/support</a>	

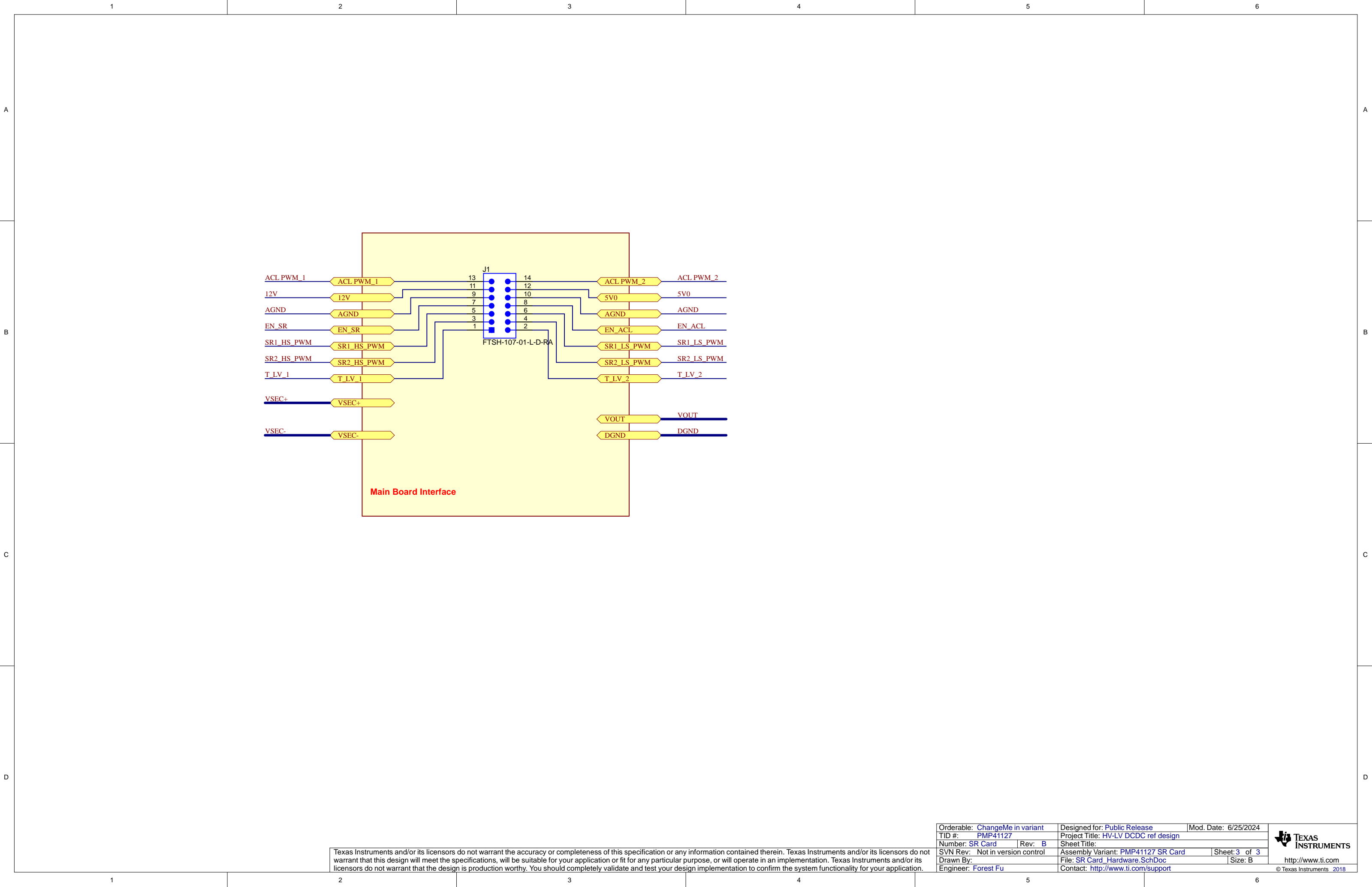
 **TEXAS  
INSTRUMENTS**

<http://www.ti.com>  
© Texas Instruments 2018



Texas Instruments and/or its licensors do not warrant the accuracy or completeness of this specification or any information contained therein. Texas Instruments and/or its licensors do not warrant that this design will meet the specifications, will be suitable for your application or fit for any particular purpose, or will operate in an implementation. Texas Instruments and/or its licensors do not warrant that the design is production worthy. You should completely validate and test your design implementation to confirm the system functionality for your application.

Orderable: <a href="#">ChangeMe in variant</a>	Designed for: <a href="#">Public Release</a>	Mod. Date: <a href="#">6/25/2024</a>
TID #: <a href="#">PMP41127</a>	Project Title: <a href="#">HV-LV DCDC ref design</a>	
Number: <a href="#">SR Card</a>	Rev: <a href="#">B</a>	Sheet Title: <a href="#">SR Card</a>
SVN Rev: <a href="#">Not in version control</a>	Assembly Variant: <a href="#">PMP41127 SR Card</a>	Sheet: <a href="#">2 of 3</a>
Drawn By: <a href="#">Forest Fu</a>	File: <a href="#">Power Stage.SchDoc</a>	Size: <a href="#">B</a>
Engineer: <a href="#">Forest Fu</a>	Contact: <a href="#">http://www.ti.com/support</a>	



Texas Instruments and/or its licensors do not warrant the accuracy or completeness of this specification or any information contained therein. Texas Instruments and/or its licensors do not warrant that this design will meet the specifications, will be suitable for your application or fit for any particular purpose, or will operate in an implementation. Texas Instruments and/or its licensors do not warrant that the design is production worthy. You should completely validate and test your design implementation to confirm the system functionality for your application.

Orderable: <a href="#">ChangeMe in variant</a>		Designed for: <a href="#">Public Release</a>		Mod. Date: 6/25/2024	
TID #: <a href="#">PMP41127</a>		Project Title: <a href="#">HV-LV DCDC ref design</a>			
Number: <a href="#">SR Card</a>		Rev: <a href="#">B</a>		Sheet Title:	
SVN Rev: Not in version control		Assembly Variant: <a href="#">PMP41127 SR Card</a>			Sheet: <a href="#">3</a> of <a href="#">3</a>
Drawn By:		File: <a href="#">SR Card_Hardware.SchDoc</a>			Size: B
Engineer: <a href="#">Forest Fu</a>		Contact: <a href="http://www.ti.com/support">http://www.ti.com/support</a>			