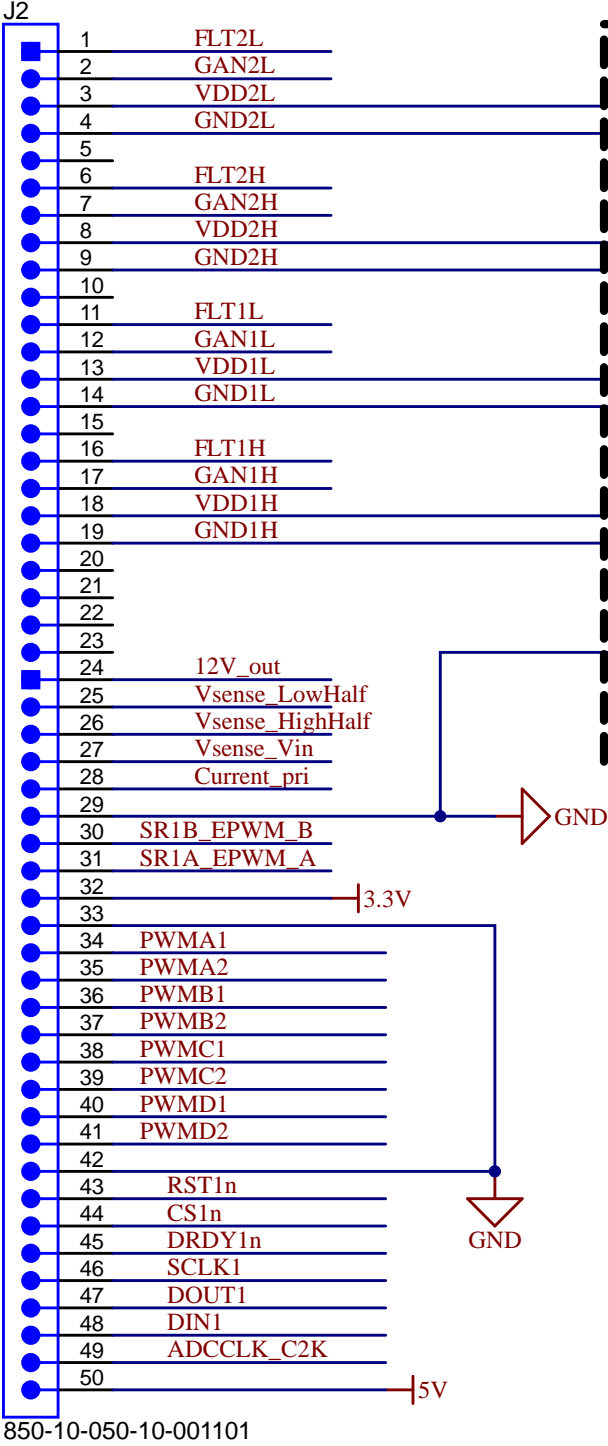
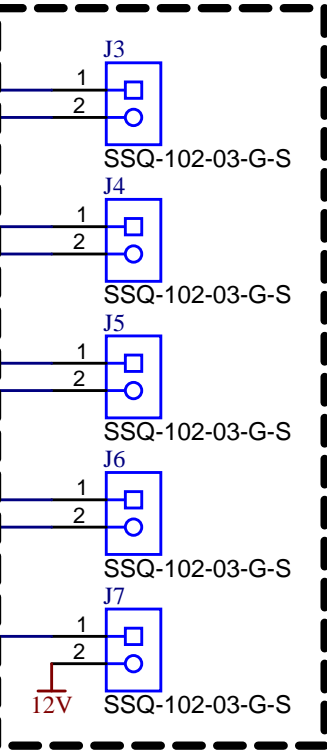


# Connectors

## Controller Board

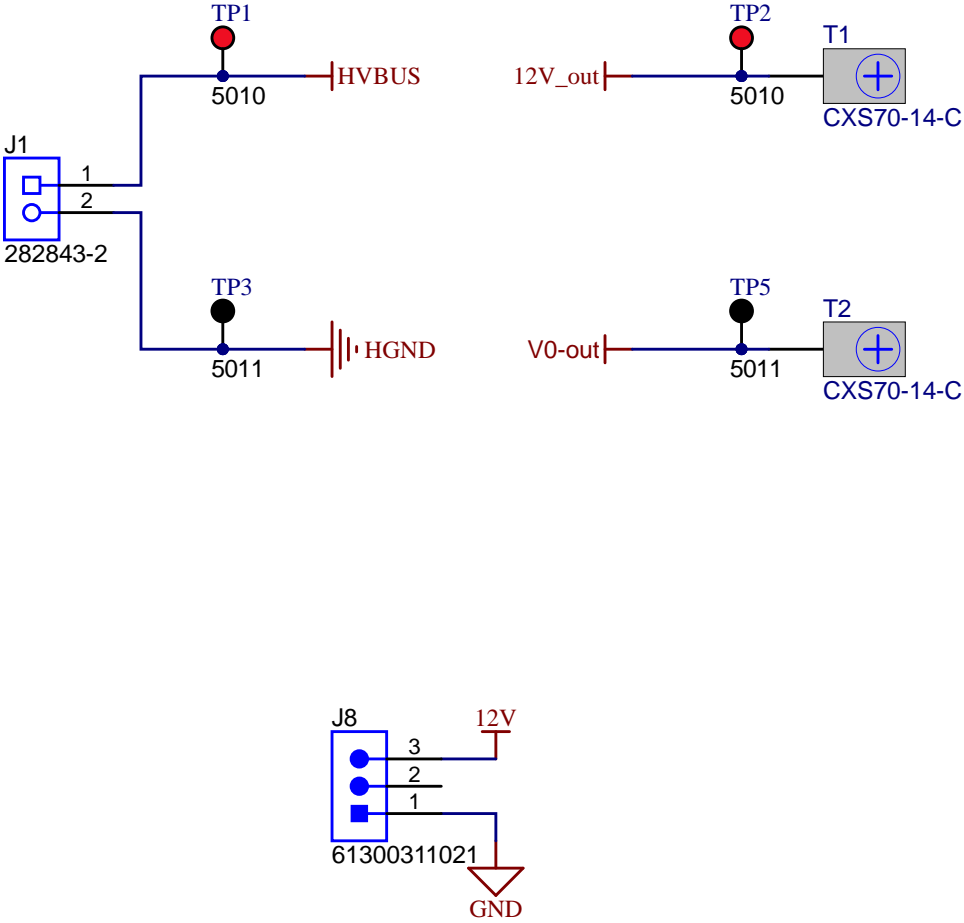


## Bias Board



J2J7 is used to insert Bias Power board

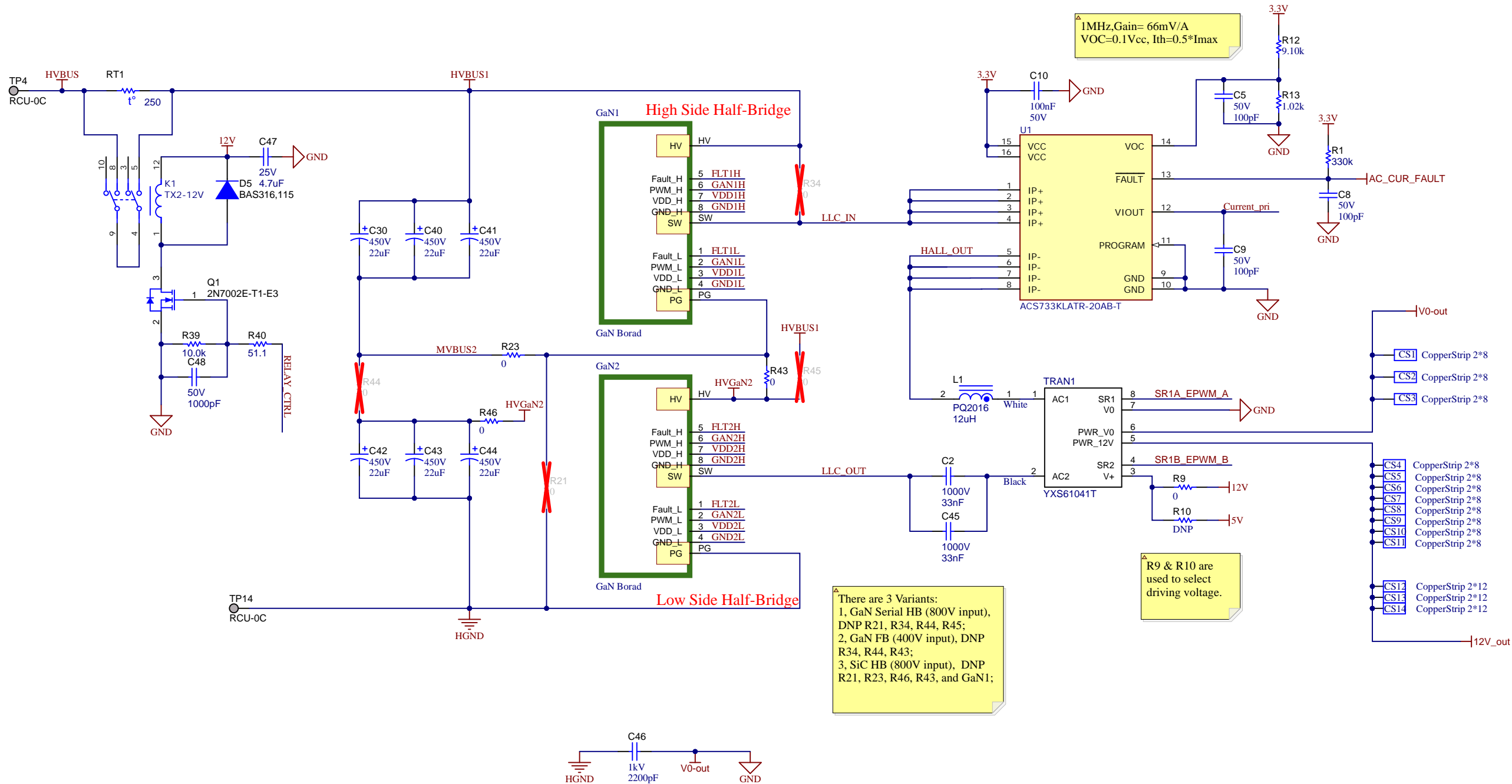
## Power Connectors



Texas Instruments and/or its licensors do not warrant the accuracy or completeness of this specification or any information contained therein. Texas Instruments and/or its licensors do not warrant that this design will meet the specifications, will be suitable for your application or fit for any particular purpose, or will operate in an implementation. Texas Instruments and/or its licensors do not warrant that the design is production worthy. You should completely validate and test your design implementation to confirm the system functionality for your application.

Orderable: <a href="#">ChangeMe in variant</a>	Designed for: <a href="#">Public Release</a>	Mod. Date: 4/17/2023
TID #: <a href="#">PMP41037</a>	Project Title: <a href="#">800V to 12V DCX</a>	
Number: <a href="#">PMP41037_Po</a>	Rev: <a href="#">E1</a>	Sheet Title:
SVN Rev: Not in version control	Assembly Variant: <a href="#">GaN_SHB Version</a>	Sheet: 1 of 4
Drawn By:	File: <a href="#">PMP41037_Power_Connect.SchDoc</a>	Size: A4
Engineer: <a href="#">Desheng Guo</a>	Contact: <a href="#">http://www.ti.com/support</a>	

## Power Stage



LOGO5



DANGER HIGH VOLTAGE

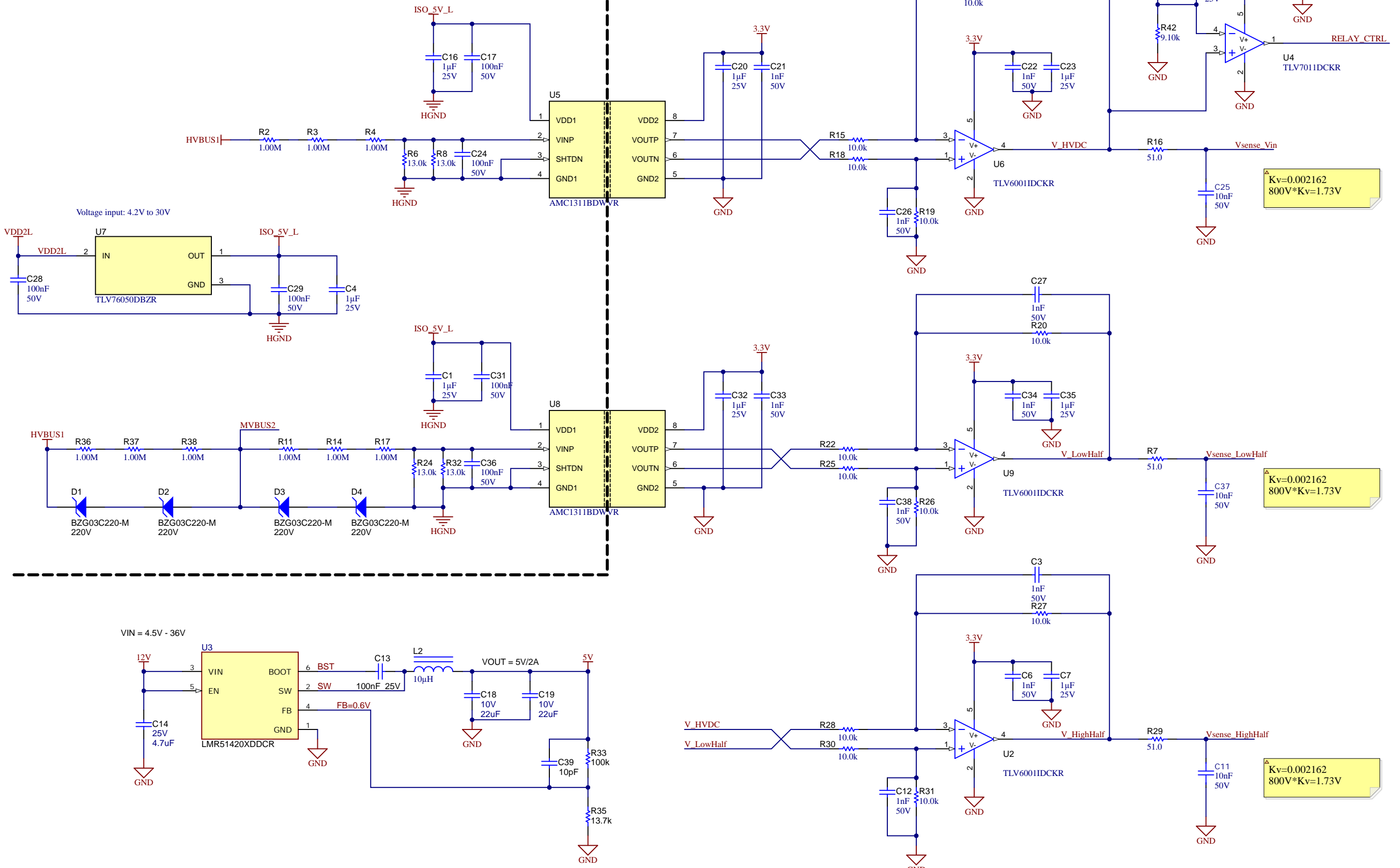


Logo6



CAUTION HOT SURFACE

Sensing Stage





PCB Number: PMP41037\_Power

PCB Rev: E1

PCB

LOGO

Texas Instruments



PCB

LOGO

FCC disclaimer

PCB

LOGO

WEEE logo

LBL1

PCB Label

THT-14-423-10

Size: 0.65" x 0.20 "

ZZ1

Label Assembly Note

This Assembly Note is for PCB labels only

ZZ2

Assembly Note

These assemblies are ESD sensitive, ESD precautions shall be observed.

ZZ3

Assembly Note

These assemblies must be clean and free from flux and all contaminants. Use of no clean flux is not acceptable.

ZZ4

Assembly Note

These assemblies must comply with workmanship standards IPC-A-610 Class 2, unless otherwise specified.

Variant/Label Table	
Variant	Label Text
001	ChangeMe!
002	ChangeMe!