

WaveVision 5 Data Capture Board

MANUFACTURING KIT / REFERENCE DESIGN (D1)

SPECIAL NOTES


National Semiconductor reserves the right to make changes to this product.

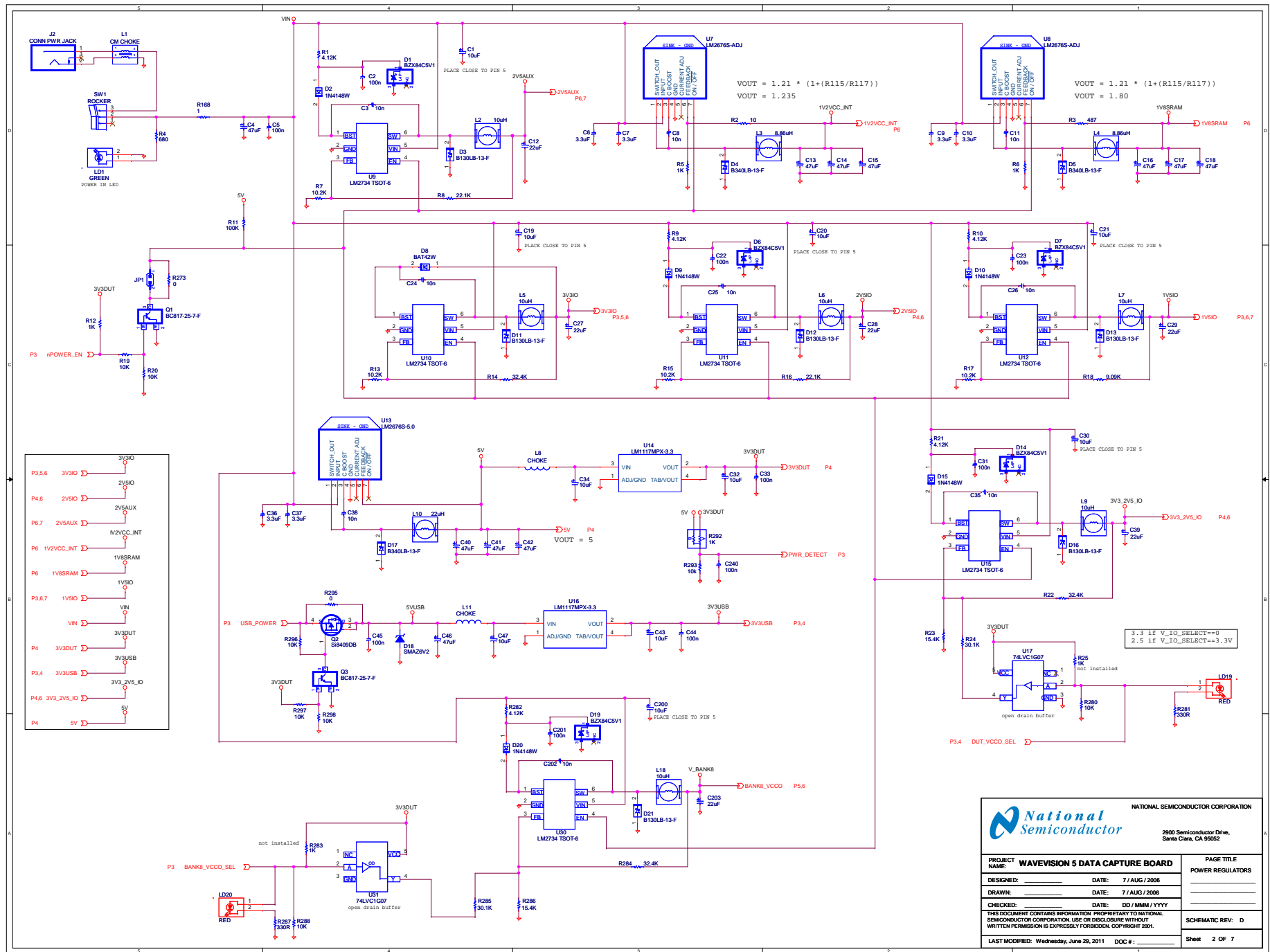
ALL parts labeled "N/A" are NOT ASSEMBLED.

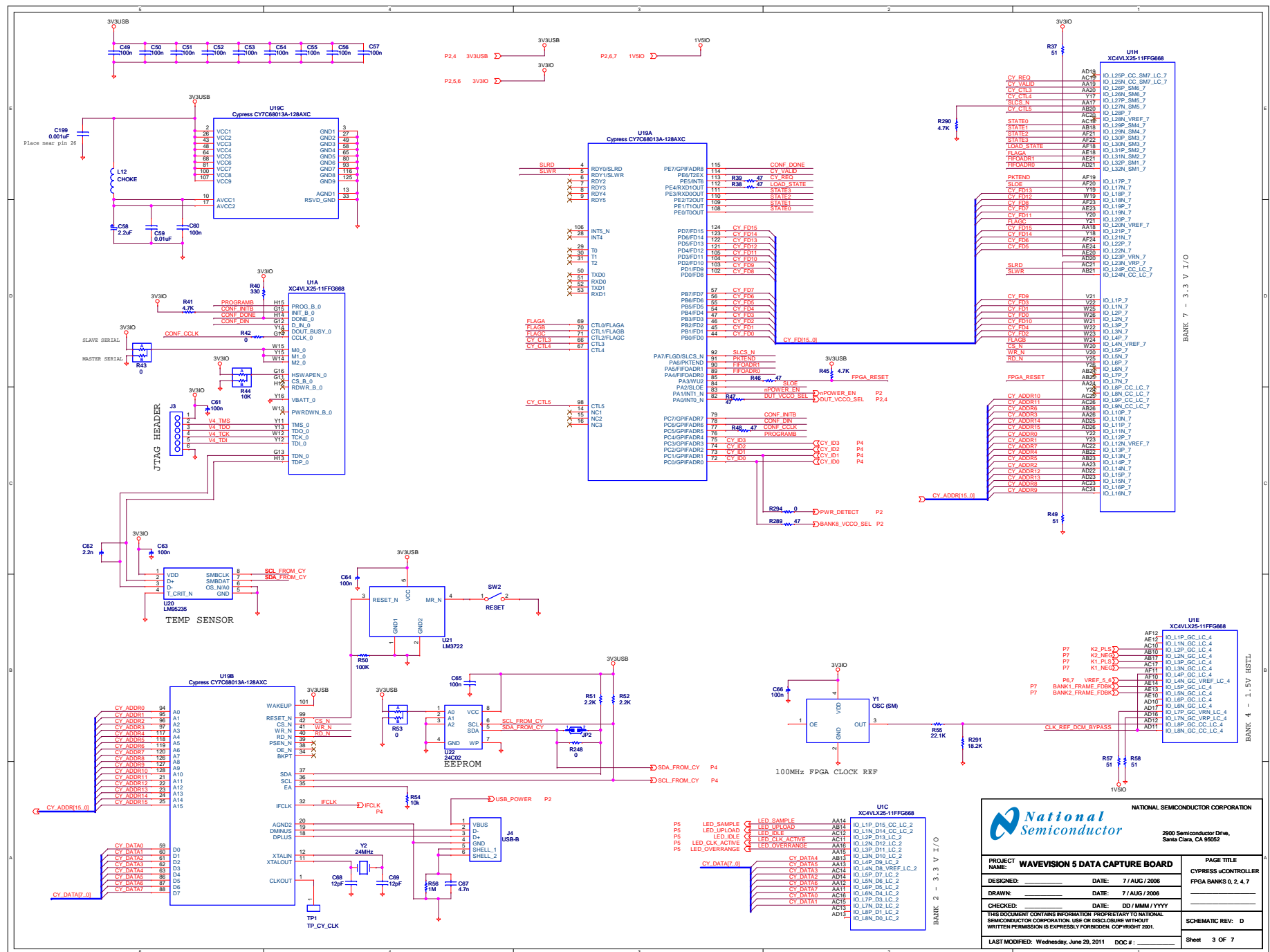
Print Instructions:

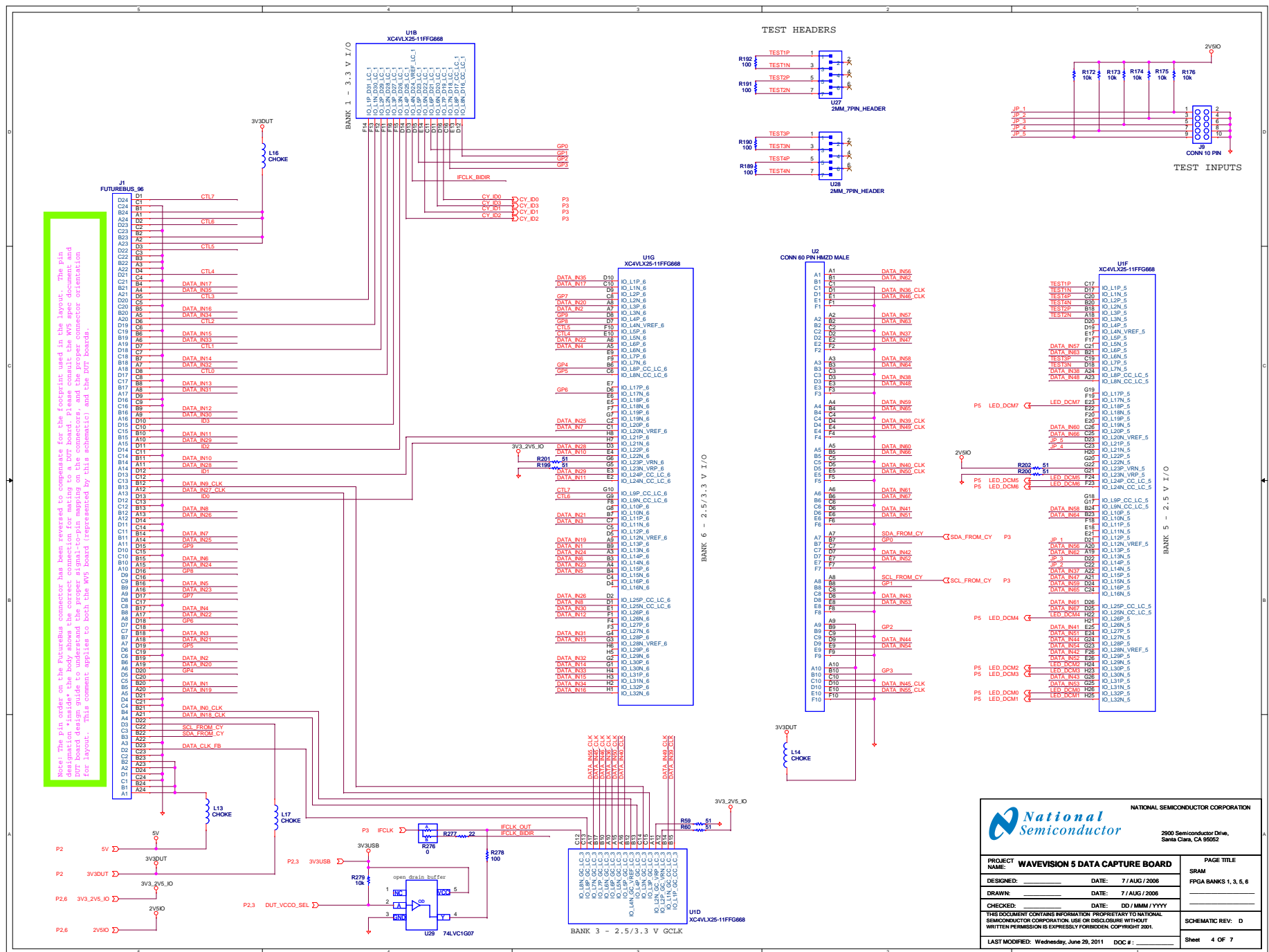
- To create a readable printout, we recommend to use A3 or 11x17" paper size.
- When printing from this PDF file, make sure to check the "Shrink to fit" box.

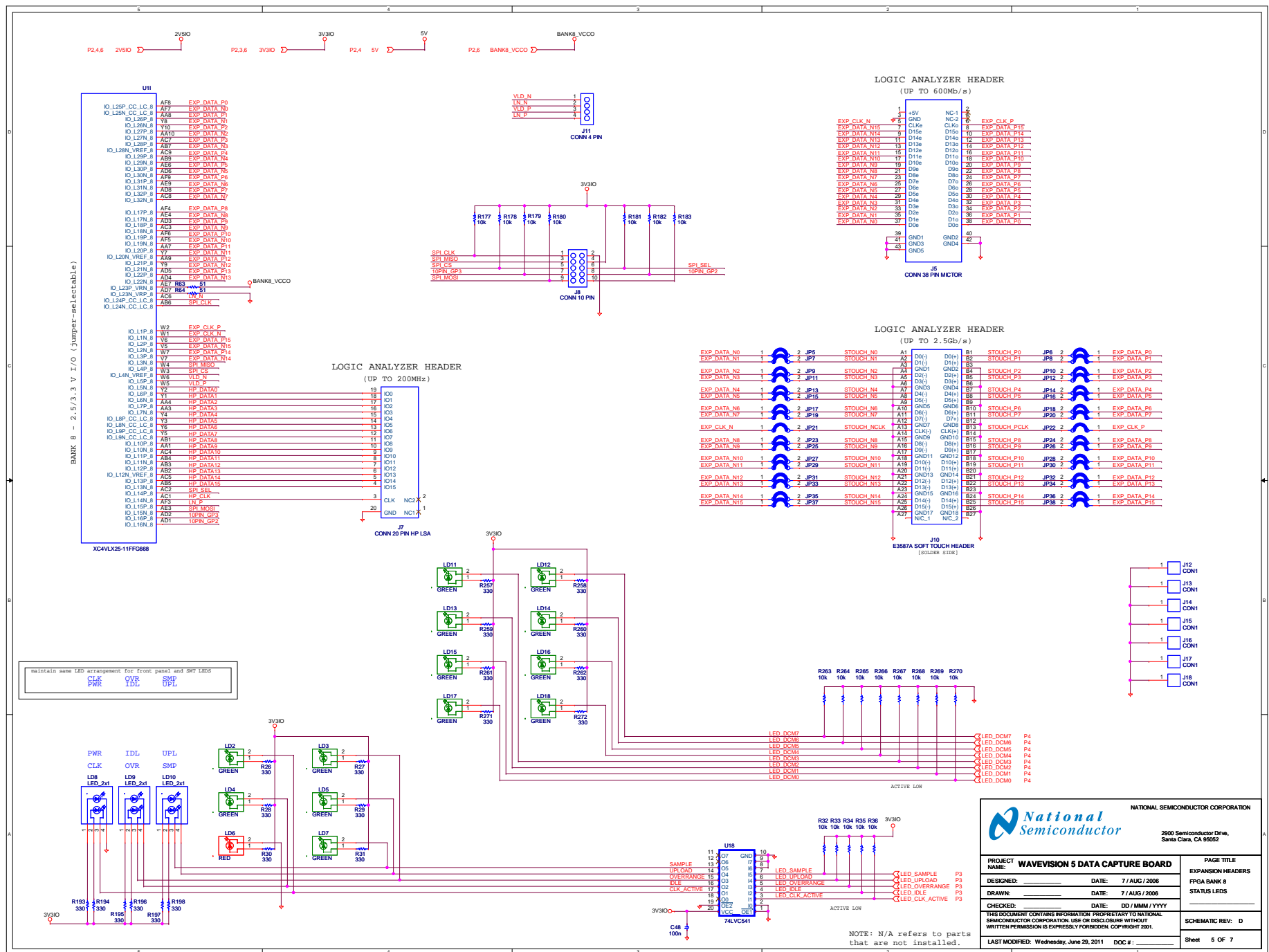
THIS DOCUMENT CONTAINS INFORMATION PROPRIETARY TO NATIONAL SEMICONDUCTOR CORPORATION. USE OR DISCLOSURE WITHOUT WRITTEN PERMISSION IS EXPRESSLY FORBIDDEN. COPYRIGHT 2005.

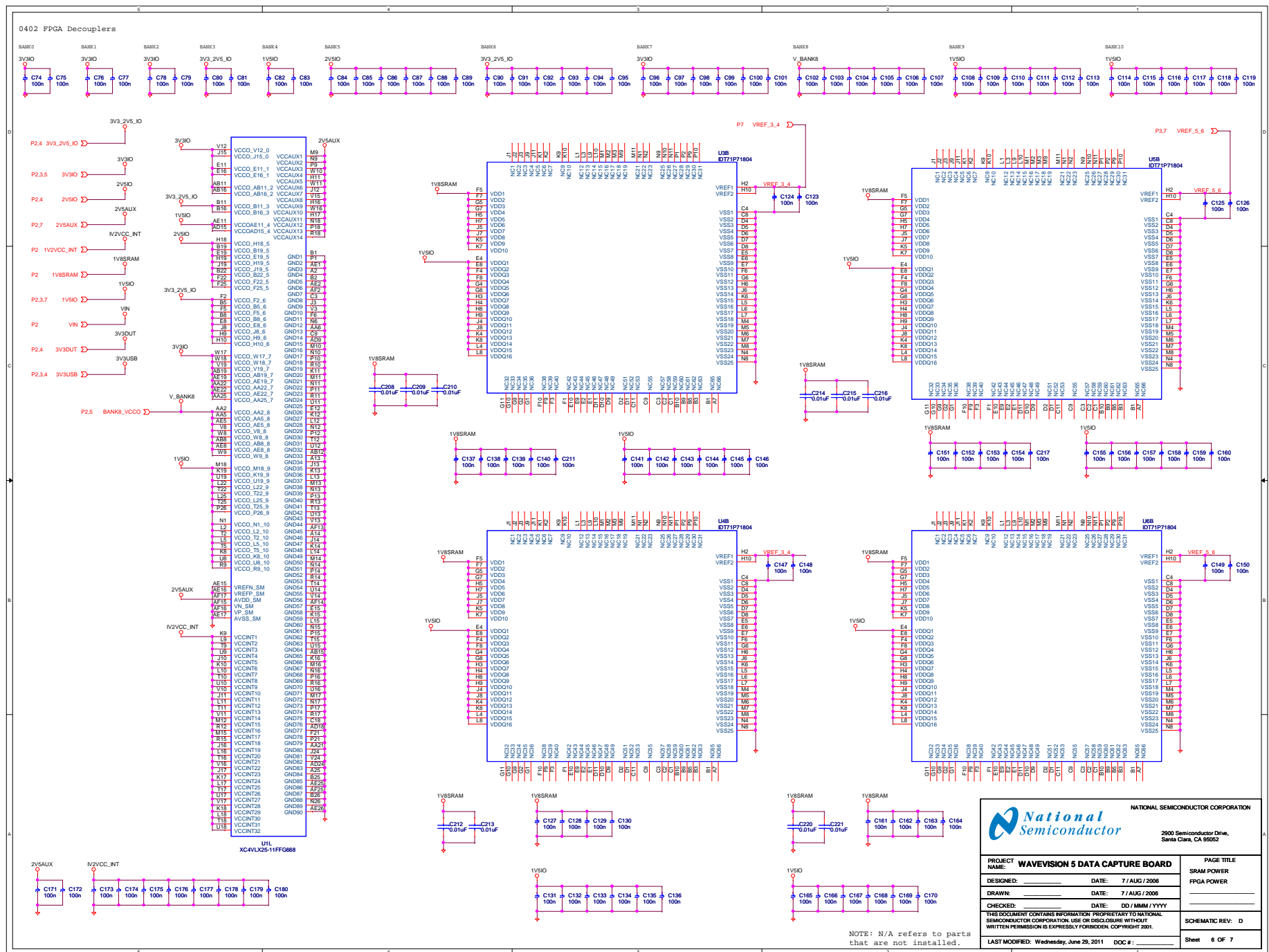
		NATIONAL SEMICONDUCTOR CORPORATION 2900 Semiconductor Drive, Santa Clara, CA 95052	
PROJECT NAME: WAVEVISION 5 DATA CAPTURE BOARD		PAGE TITLE	
DESIGNED: _____ DATE: 7 / AUG / 2006		TITLE PAGE	
DRAWN: _____ DATE: 7 / AUG / 2006		_____	
CHECKED: _____ DATE: DD / MMM / YYYY		_____	
THIS DOCUMENT CONTAINS INFORMATION PROPRIETARY TO NATIONAL SEMICONDUCTOR CORPORATION. USE OR DISCLOSURE WITHOUT WRITTEN PERMISSION IS EXPRESSLY FORBIDDEN. COPYRIGHT 2005.		SCHEMATIC REV: D	
LAST MODIFIED: Wednesday, June 29, 2011 DOC # : _____		Sheet 1 OF 7	

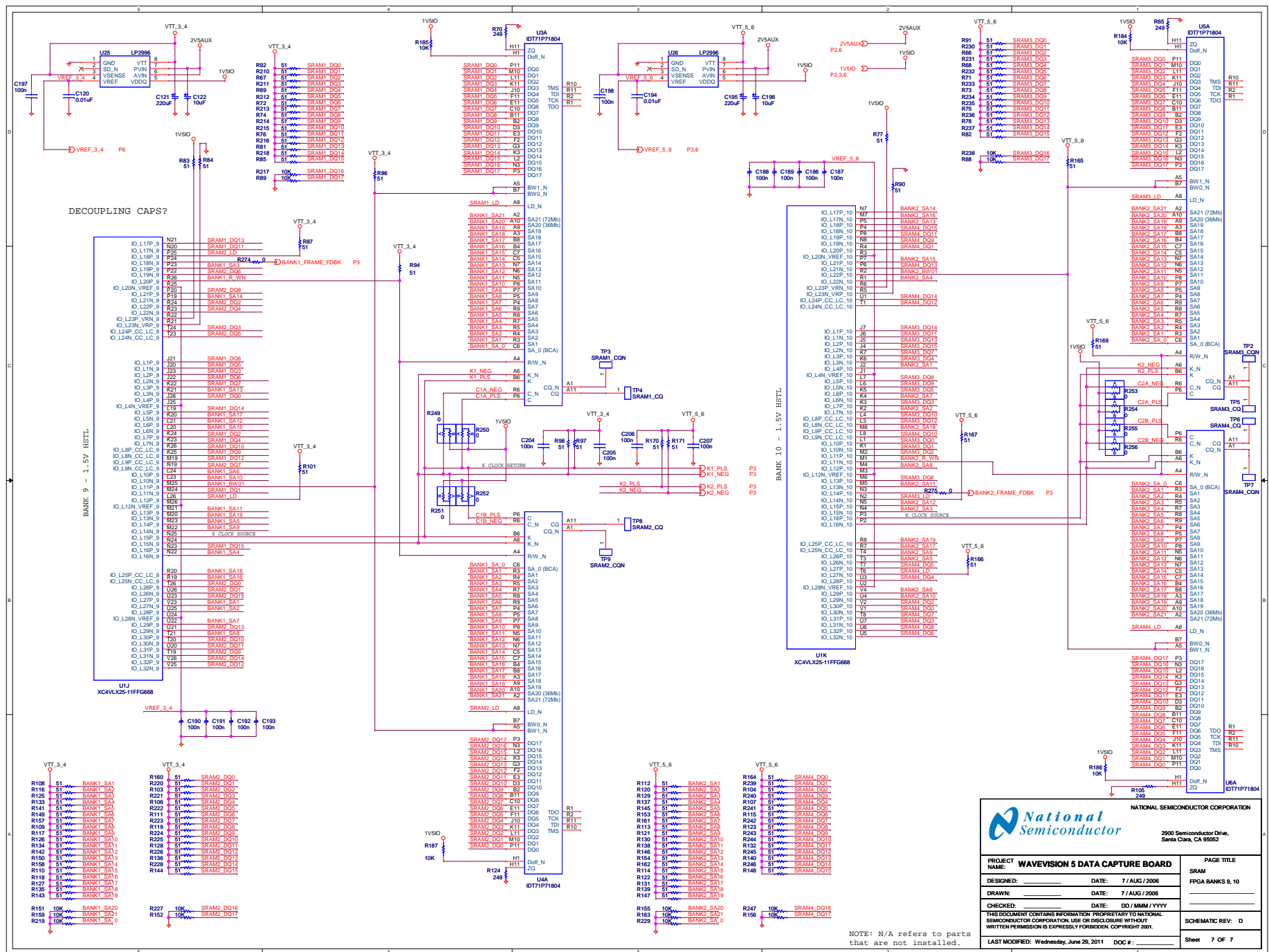












NOTE: N/A refers to parts that are not installed.



NATIONAL SEMICONDUCTOR CORPORATION

2900 Semiconductor Drive,

PROJECT NAME: WAVEVISION 5 DATA CAPTURE BOARD		PAGE TITLE
		SRAM
DESIGNED: _____	DATE: 7 / AUG / 2006	FRPGA BANKS 8, 10
DRAWN: _____	DATE: 7 / AUG / 2006	_____
CHECKED: _____	DATE: DD / MMM / YYYY	_____
THIS DOCUMENT CONTAINS INFORMATION PROPRIETARY TO NATIONAL SEMICONDUCTOR CORPORATION, USE OR DISCLOSURE WITHOUT WRITTEN PERMISSION IS EXPRESSLY FORBIDDEN. COPYRIGHT 2001.		SCHMATIC REV: D
LAST MODIFIED: Wednesday, June 28, 2011 DOC # :		Sheet 7 OF 7