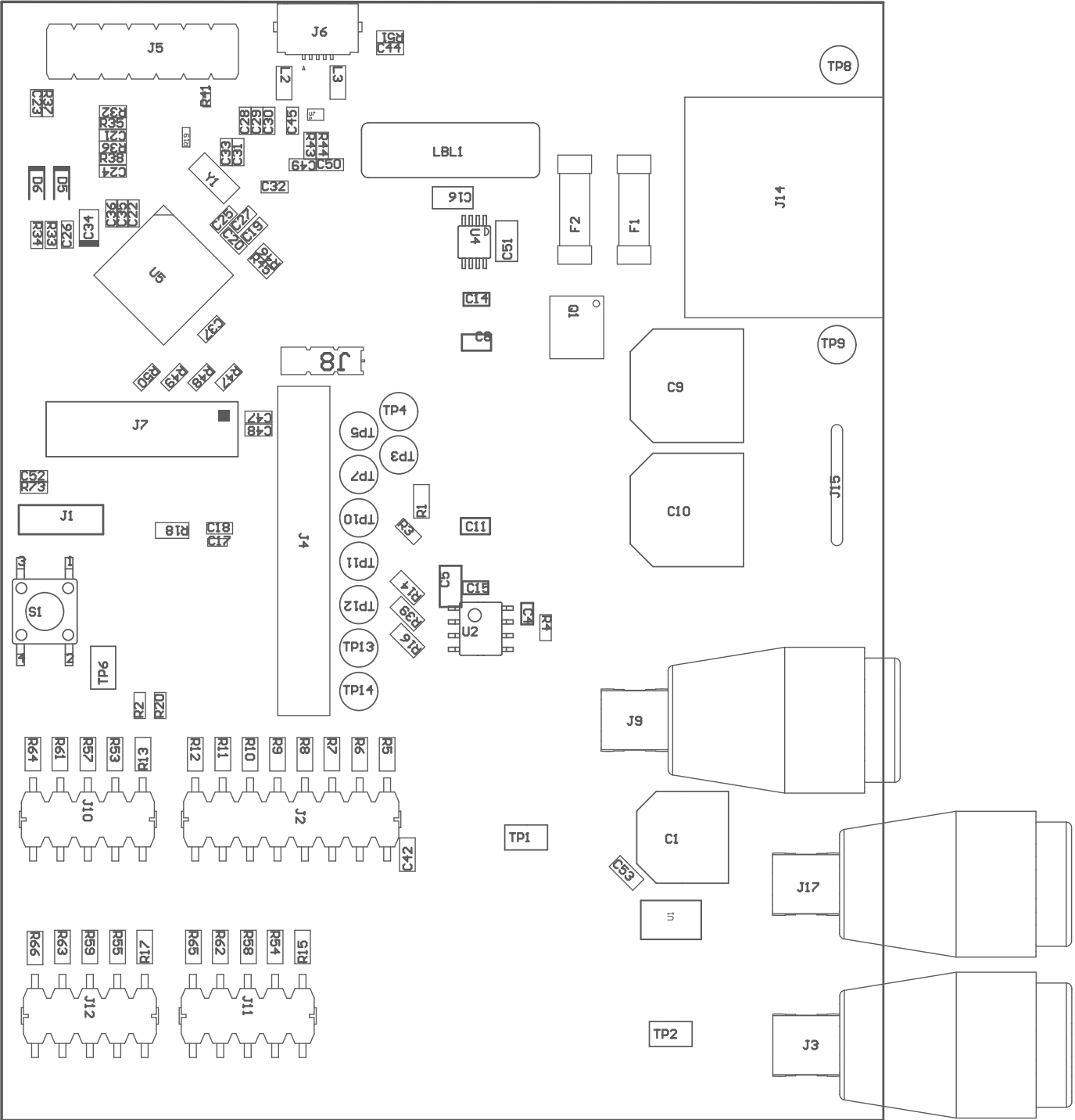


ZZ1 ■ Install label in silkscreened box after final wash. Text shall be 8 pt font. Text shall be per the Label Table in the PDF schematic.

ZZ2 ■ These assemblies are ESD sensitive, ESD precautions shall be observed.

ZZ3 ■ These assemblies must be clean and free from flux and all contaminants. Use of no clean flux is not acceptable.

ZZ4 ■ These assemblies must comply with workmanship standards IPC-A-610 Class 2, unless otherwise specified.



COMPONENTS MARKED 'DNP' SHOULD NOT BE POPULATED.

ASSEMBLY VARIANT: 002

PCB VIEWED FROM TOP SIDE	BOARD #: MD044	REV: A	SUN REV: 9497b7228a77c0994b878eeba39881ad4daca2c0 [Locally Modified]
	TID #: N/A		
PLOT NAME = Top Assembly Drawing	GENERATED : 10/19/2022 2:52:06 PM	TEXAS INSTRUMENTS	

