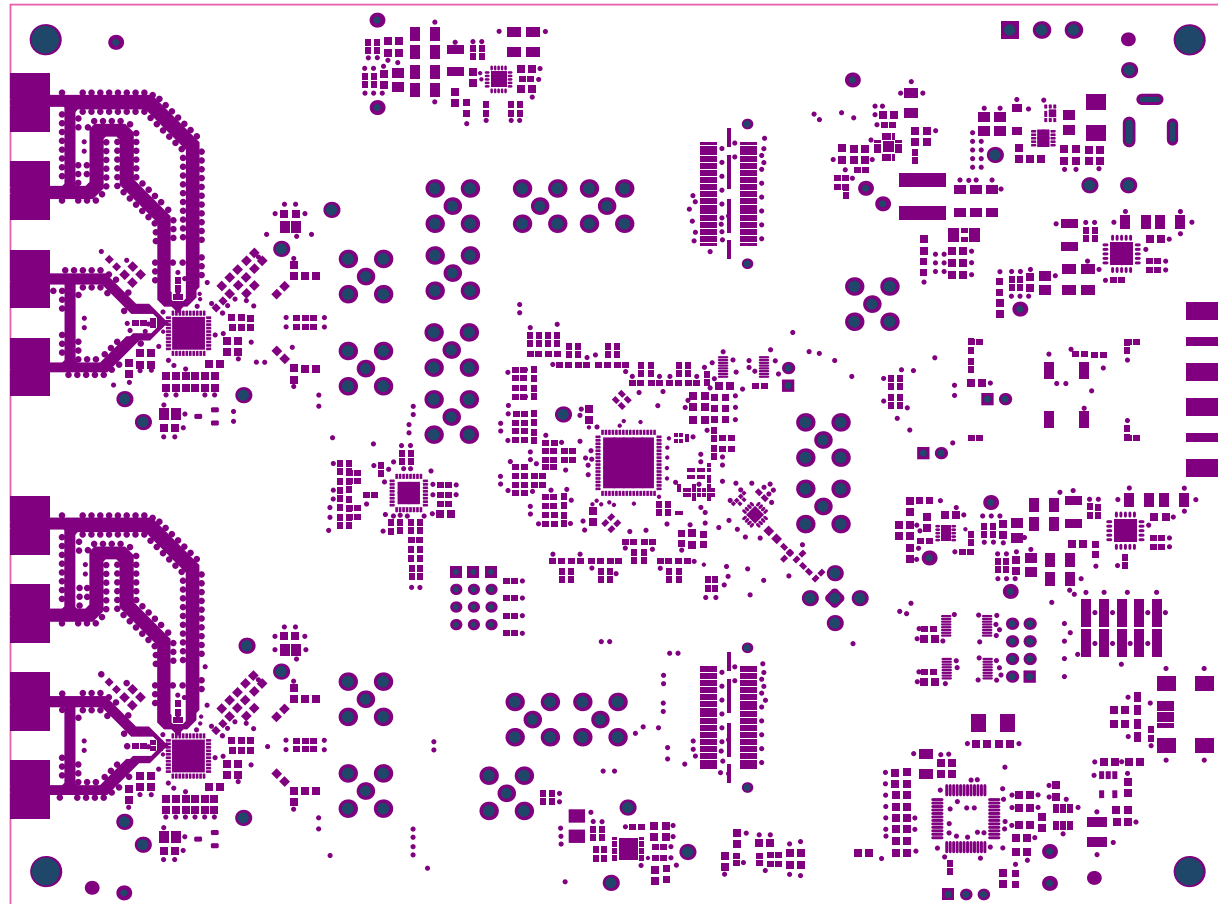
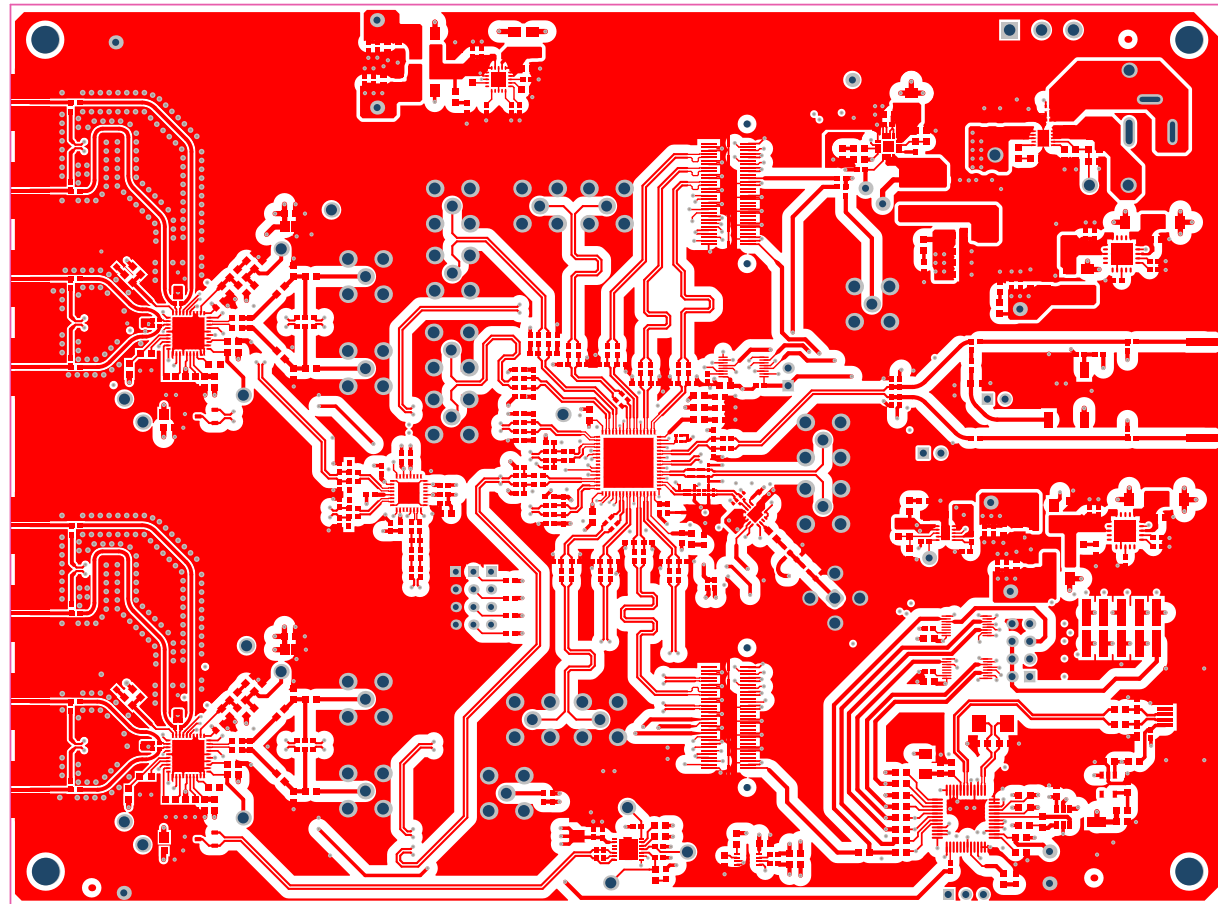


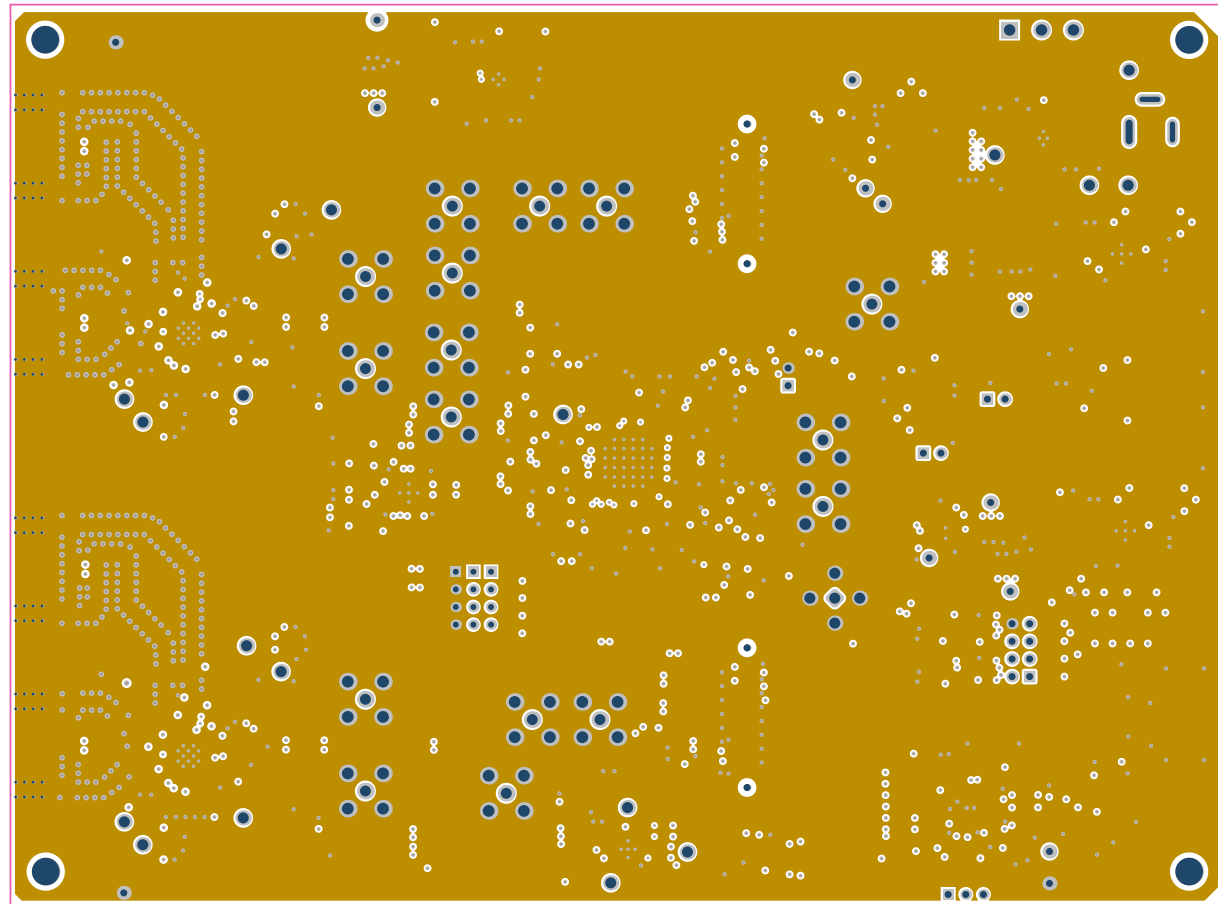
ALL ARTWORK VIEWED FROM TOP SIDE	BOARD #: TIDA-01021	REV: E2	SUN REV:
LAYER NAME = TOP OVERLAY	TID #: 01021		
PLOT NAME = Top Overlay	GENERATED : 10/13/2017 5:38:46 PM	TEXAS INSTRUMENTS	



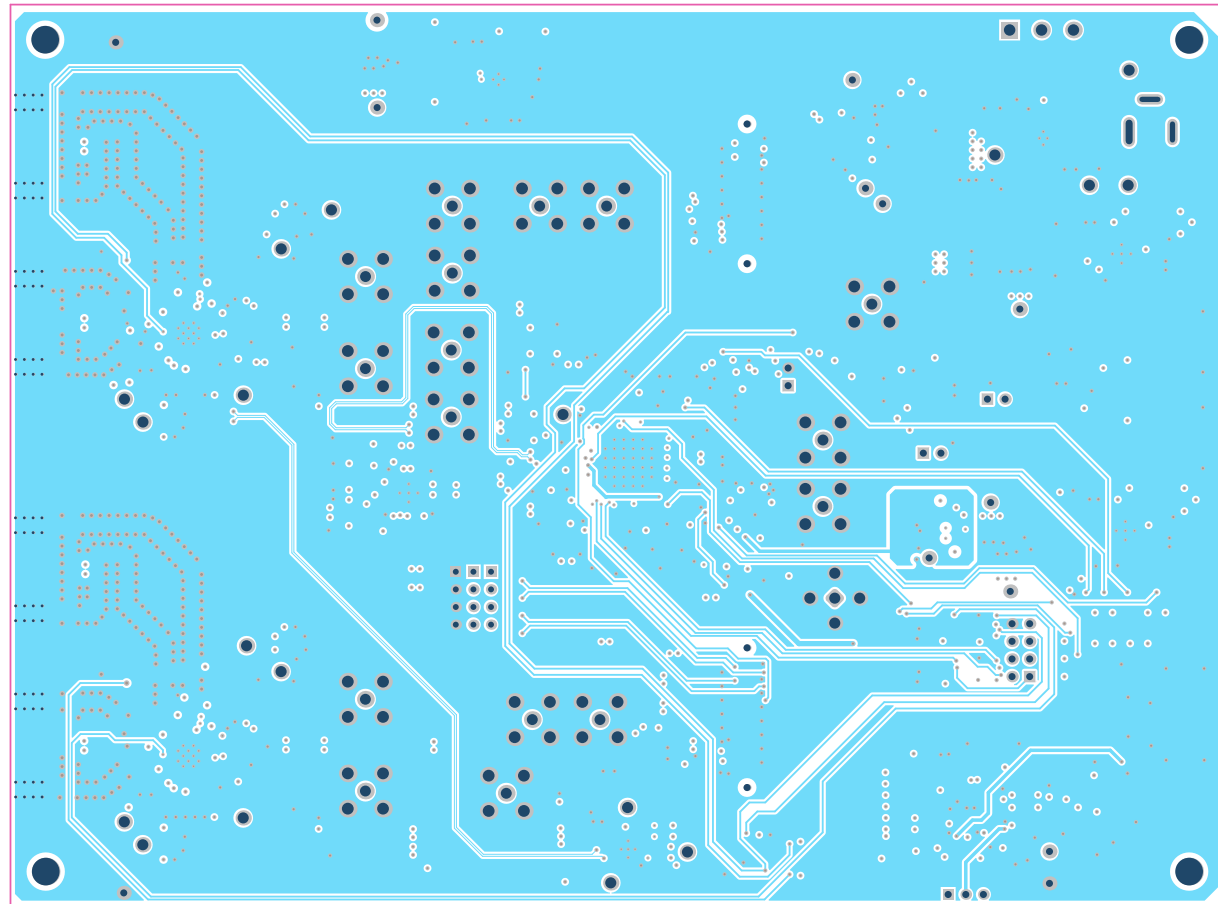
ALL ARTWORK VIEWED FROM TOP SIDE	BOARD #: TIDA-01021	REV: e2	SUN REV:
LAYER NAME = TOP SOLDER	TID #:01021		
PLOT NAME = Top Solder Mask	GENERATED : 10/13/2017 5:38:48 PM	TEXAS INSTRUMENTS	



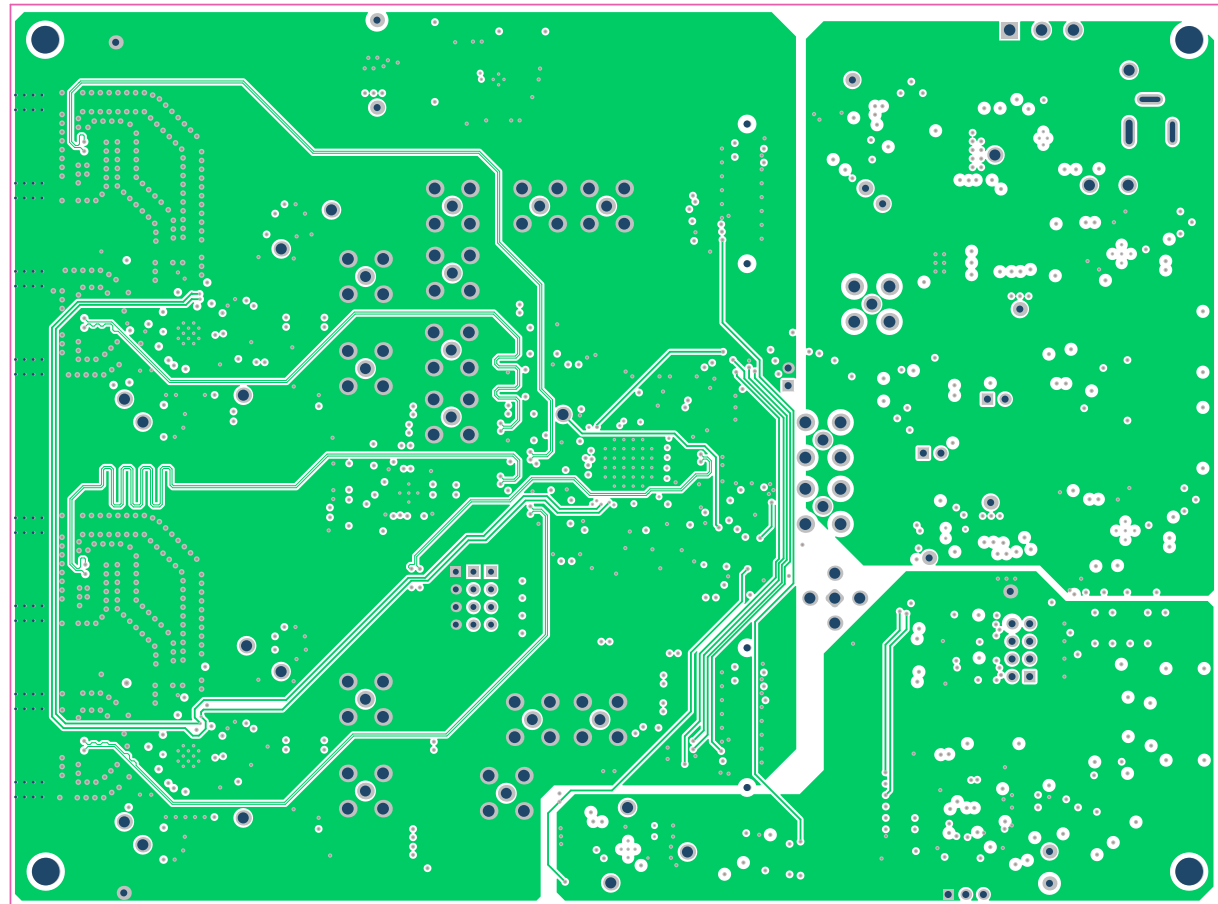
ALL ARTWORK VIEWED FROM TOP SIDE	BOARD #: TIDA-01021	REV: e2	SUN REV:
LAYER NAME = TOP LAYER	TID #: 01021		
PLOT NAME = Top Layer	GENERATED : 10/13/2017 5:38:49 PM		TEXAS INSTRUMENTS



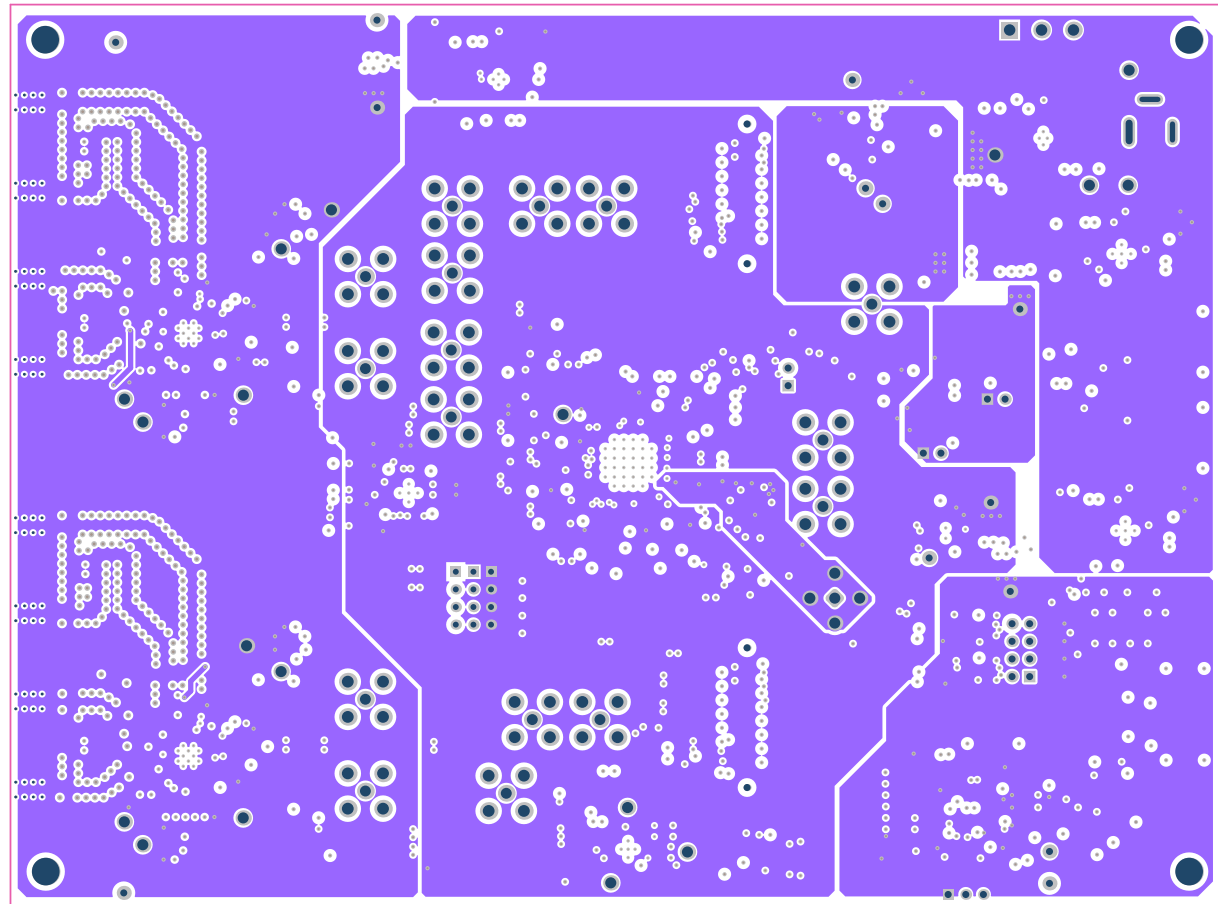
ALL ARTWORK VIEWED FROM TOP SIDE	BOARD #: TIDA-01021	REV: E2	SUN REV:
LAYER NAME = GND Layer	TID #: 01021		
PLOT NAME = GND LAYER	GENERATED : 10/13/2017 5:38:50 PM	TEXAS INSTRUMENTS	



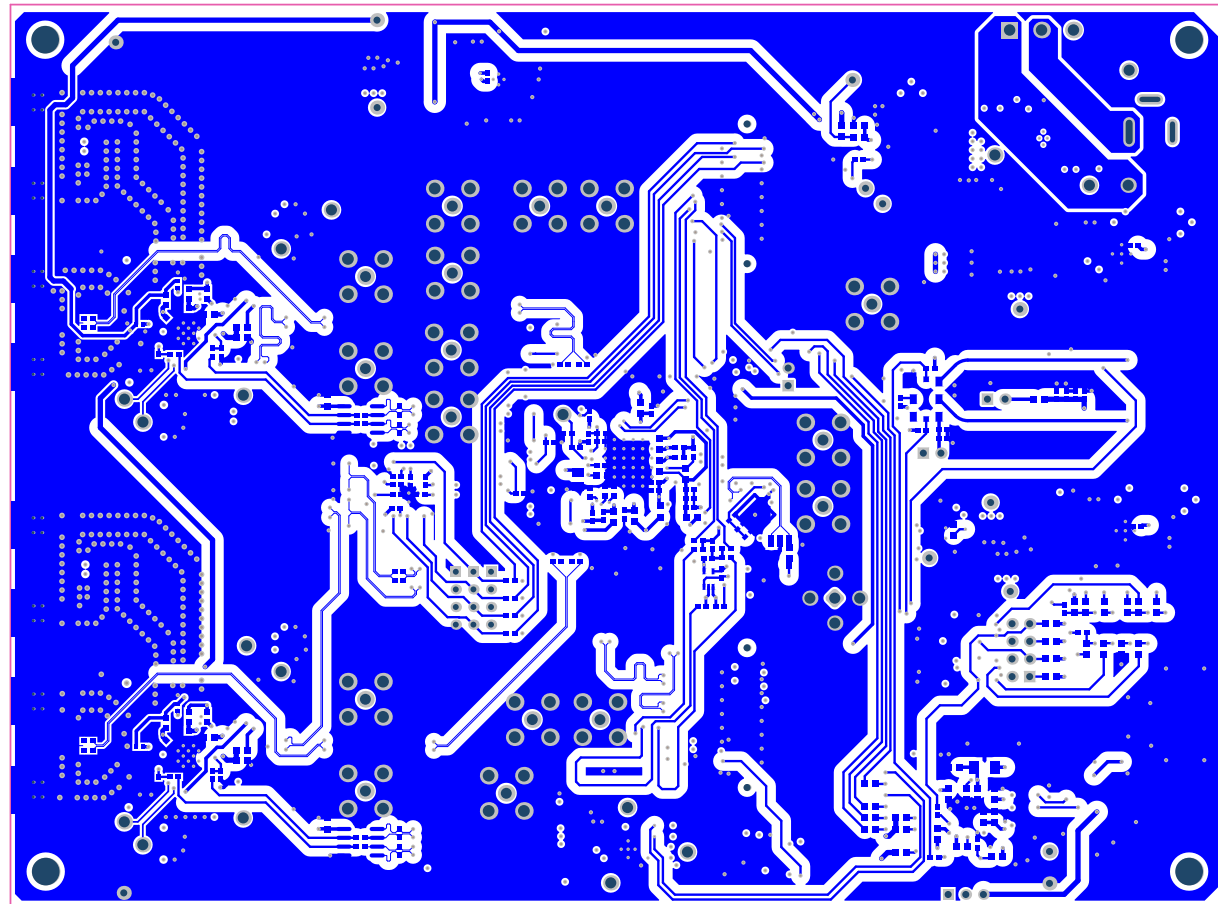
ALL ARTWORK VIEWED FROM TOP SIDE	BOARD #: TIDA-01021	REV: E2	SUN REV:
LAYER NAME = Signal Layer2	TID #:01021		
PLOT NAME = Signal Layer 2	GENERATED : 10/13/2017 5:38:51 PM	TEXAS INSTRUMENTS	



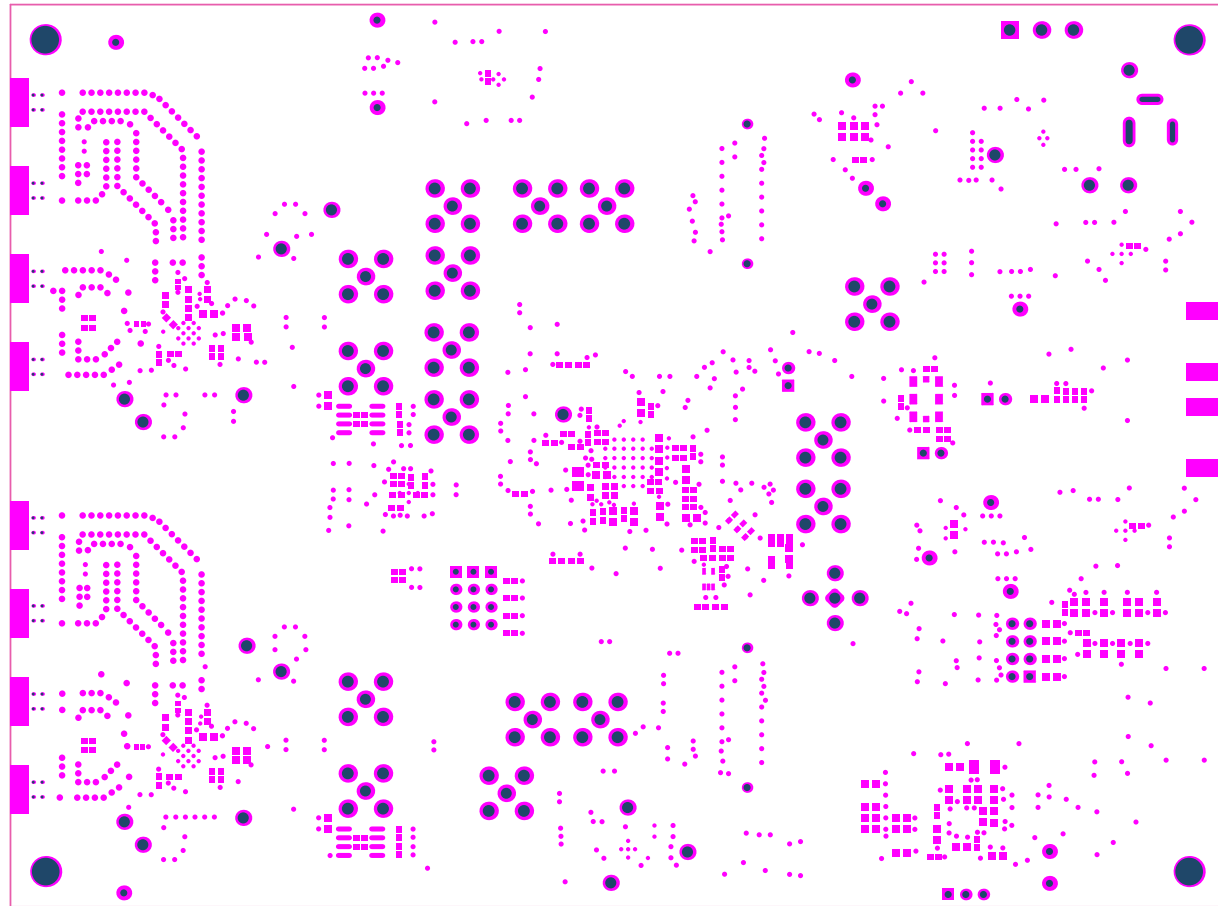
ALL ARTWORK VIEWED FROM TOP SIDE	BOARD #: TIDA-01021	REV: E2	SUN REV:
LAYER NAME = Signal Layer1	TID #:01021		
PLOT NAME = Signal Layer 3	GENERATED : 10/13/2017 5:38:52 PM	TEXAS INSTRUMENTS	



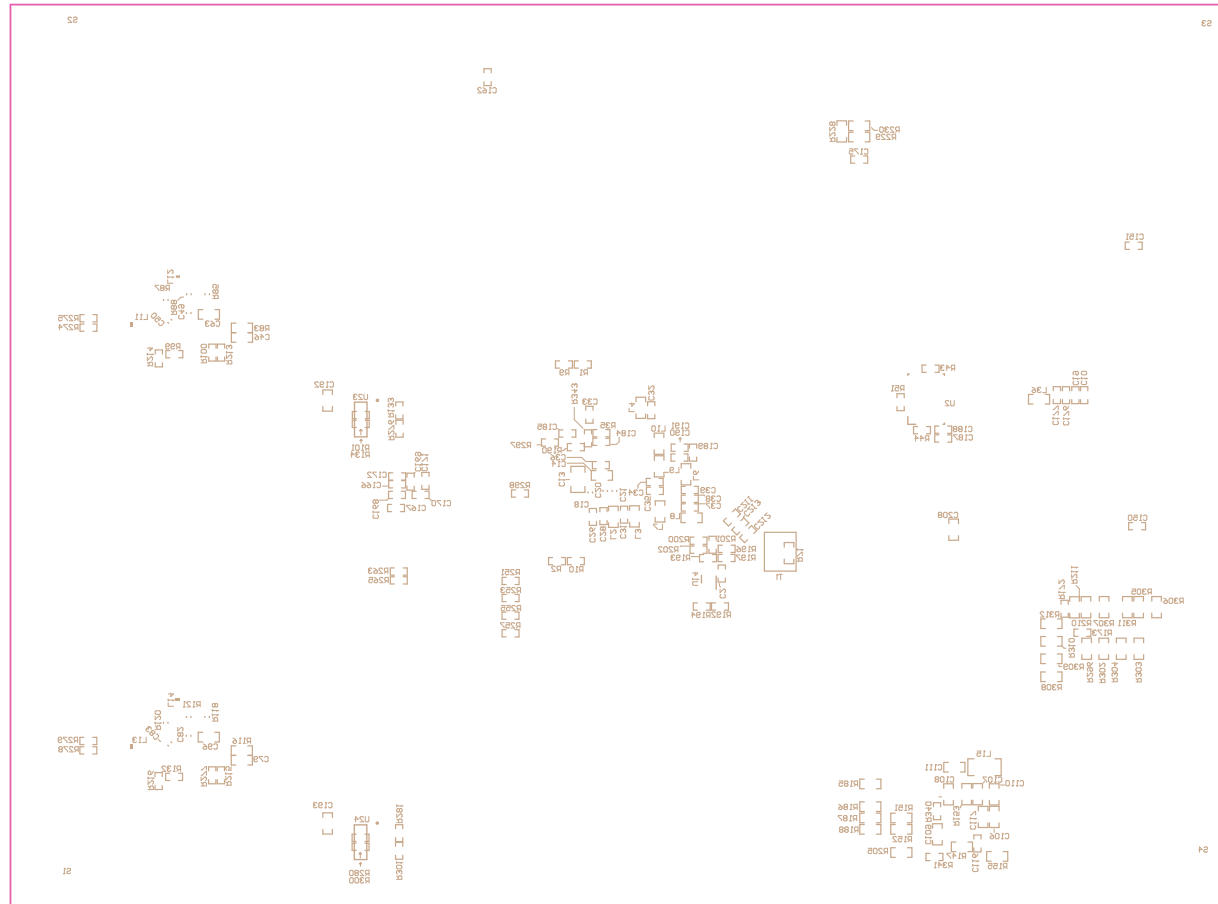
ALL ARTWORK VIEWED FROM TOP SIDE	BOARD #: TIDA-01021	REV: E2	SUN REV:
LAYER NAME = PWR Layer	TID #: 01021		
PLOT NAME = PWR LAYER	GENERATED : 10/13/2017 5:38:53 PM	TEXAS INSTRUMENTS	



ALL ARTWORK VIEWED FROM TOP SIDE	BOARD #: TIDA-01021	REV: E2	SUN REV:
LAYER NAME = BOTTOM LAYER	TID #: 01021		
PLOT NAME = Bottom Layer	GENERATED : 10/13/2017 5:38:54 PM		TEXAS INSTRUMENTS

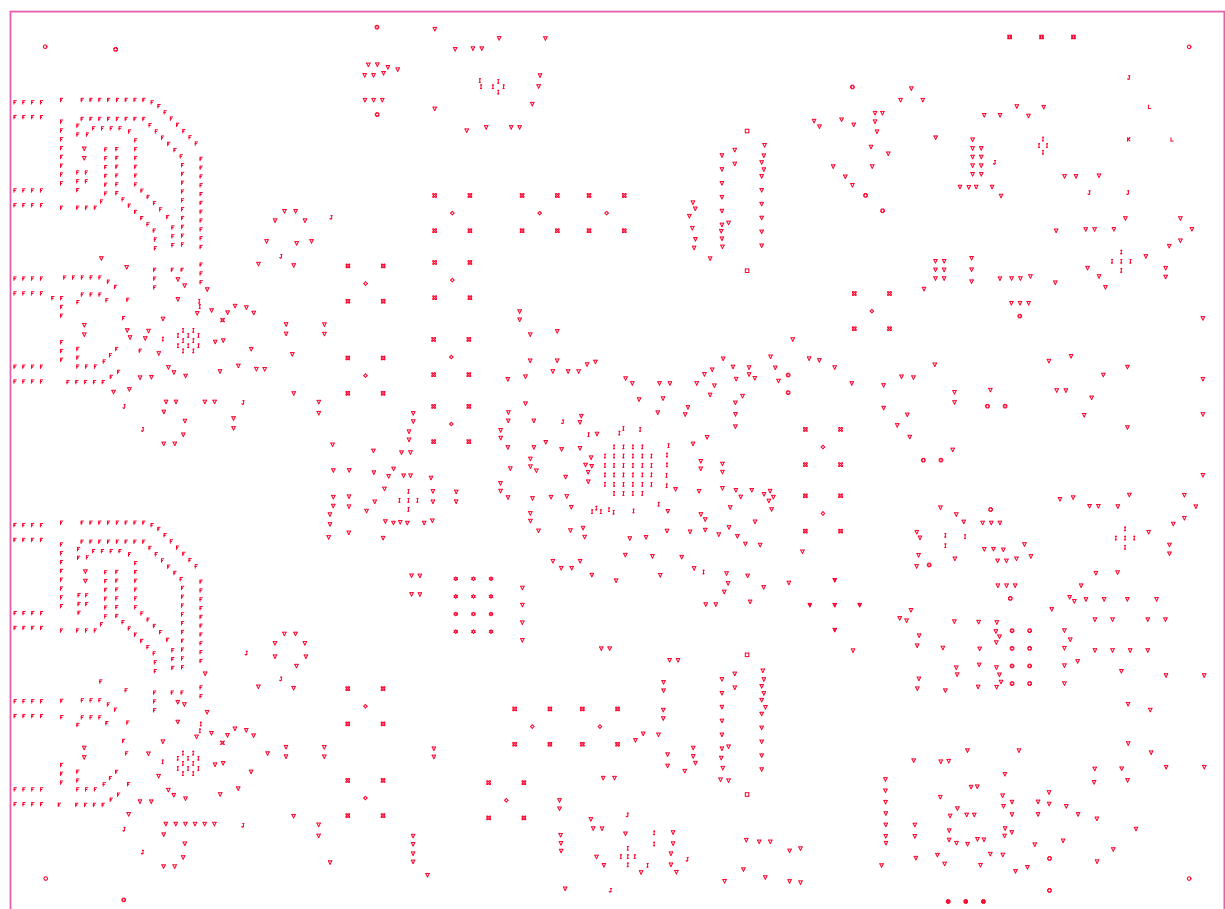


ALL ARTWORK VIEWED FROM TOP SIDE	BOARD #: TIDA-01021	REV: E2	SUN REV:
LAYER NAME = BOTTOM SOLDER	TID #:01021		
PLOT NAME = Bottom Solder Mask	GENERATED : 10/13/2017 5:38:55 PM	TEXAS INSTRUMENTS	



ALL ARTWORK VIEWED FROM TOP SIDE	BOARD #: TIDA-01021	REV: E2	SUN REV:
LAYER NAME = BOTTOM OVERLAY	TID #: 01021		
PLOT NAME = Bottom Overlay	GENERATED : 10/13/2017 5:38:56 PM	TEXAS INSTRUMENTS	

1 2 3 4 5 6



Layer	Name	Material	Thickness	Constant	Board Layer Stack
1	Top Overlay				
2	Top Solder	Solder Resist	0.40mil	3.5	
3	Top Layer	Copper	1.40mil		
4	Dielectric1	Rogers4003C	12.00mil	4.2	
5	GND Layer	Copper	0.70mil		
6	Dielectric 4	FR4 370	8.50mil	4.2	
7	Signal Layer 1	Copper	1.40mil		
8	Dielectric 3	FR4 370	14.50mil	4.2	
9	Signal Layer 2	Copper	1.40mil		
10	Dielectric 5	FR4 370	8.50mil	4.2	
11	PWR Layer	Copper	0.70mil		
12	Dielectric 2	FR4 370	8.00mil	4.2	
13	Bottom Layer	Copper	1.40mil		
14	Bottom Solder	Solder Resist	0.40mil	3.5	
15	Bottom Overlay				

IMPEDANCE TABLE:-

Layer	SE IMP (OHM) +/-10%	SE TRACE WIDTH IN MILS	DIFF IMP (OHM) +/-10%	DIFF TRACE WIDTH/SPACING IN MILS	DIFF IMP (OHM) +/-10%	WIDTH/SPACING IN MILS	REFERENCE Layer
Top Layer	50(CPW) 50	22mil 24mil	90 ohms	15mil trace/ 7mil space	100 ohms	12mil trace/ 8mil space	GND Layer
SIGNAL Layer1	50	10.5 mil	90 ohms	-	100 ohms	5.5mil trace/ 6mil space	GND Layer
SIGNAL Layer2	50	10.5 mil	90 ohms	-	100 ohms	5.5mil trace/ 6mil space	PWR Layer
BOTTOM Layer	50	13.5 mil	90 ohms	-	100 ohms	4.25mil trace/ 4.25mil space	PWR Layer

22 mil (CPW) width on top layer should be controlled 50 ohms +/- 5%
 ALL SMA CONNECTORS TO FLUSH TO THE EDGE OF THE BOARD, NO GAP ALLOWED.
 This is especially critical for: RFoutAP, RFoutAM, RFoutBP, and RFoutBM SMA connectors

Symbol	Count	Hole Size	Plated	Hole Type	Via/Pad	Hole Length
I	115	7.87mil (0.200mm)	PTH	Round	Via	-
X	2	10.00mil (0.254mm)	PTH	Round	Via	-
V	685	12.00mil (0.305mm)	PTH	Round	Via	-
F	375	16.00mil (0.406mm)	PTH	Round	(Mixed)	-
L	2	29.92mil (0.760mm)	PTH	Slot	Pad	120.08mil (3.050mm)
K	12	33.46mil (0.850mm)	PTH	Round	Pad	-
K	1	39.76mil (1.010mm)	PTH	Slot	Pad	140.16mil (3.560mm)
K	27	40.00mil (1.016mm)	PTH	Round	Pad	-
K	4	40.16mil (1.020mm)	NPTH	Round	Pad	-
K	3	40.16mil (1.020mm)	PTH	Round	Pad	-
K	16	62.00mil (1.575mm)	PTH	Round	Pad	-
K	5	62.99mil (1.600mm)	PTH	Round	Pad	-
J	18	63.00mil (1.600mm)	PTH	Round	Pad	-
J	3	64.96mil (1.650mm)	PTH	Round	Pad	-
J	64	67.00mil (1.702mm)	PTH	Round	Pad	-
O	4	157.00mil (3.988mm)	NPTH	Round	Pad	-
	1336 Total					

Slot definitions : Routed Path Length = Calculated from tool start centre position to tool end centre position.
 Hole Length = Routed Path Length + Tool Size = Slot length as defined in the PCB layout

Drill Table
 FOR 7.874MIL DRILL +/-7.874MIL
 FOR 10MIL DRILL +/-10MIL
 FOR 12MIL DRILL +/-12MIL
 FOR 16MIL DRILL +/-16MIL
 FOR PTH DRILL +/-3MIL
 FOR NPTH DRILL +/-2MIL

DESIGN INFORMATION

BOARD SIZE (REFER ALSO ARRAY/PANEL PROFILING INFORMATION)
 175MM X 130mm

Number of Layers : 6
 MIN. TRACK WIDTH: 4.25 MIL
 MIN. CLEARANCE: 4.25 MIL
 MIN. VIA PAD SIZE: 16 MIL

MINIMUM ANNULAR RING 5.90 MIL EXTERNAL
 PER IPC-D-275 CLASS 2 LEVEL C
 REGISTRATION TOLERANCES: METAL +/- 5 MIL, HOLES +/- 3 MIL

MATERIAL:
 FR-408 FR-4 High Tg OTHER Rogers4003C and FR4 370

THICKNESS: 63 MIL (1.6mm) +/-10% OTHER _____

TOLERANCE: ANSI IPC-6012 TYPE 3 CLASS 2
 OTHER +/- _____

BOW & TWIST: ANSI IPC-6012 TYPE 3 CLASS 2
 OTHER +/- _____

COPPER THICKNESS (FINISHED):
 OUTER: 1.4MIL (1oz) 2MIL (1.4oz) 2.8MIL (2oz)
 INNER SIGNAL: 1.4MIL (1oz) 0.7MIL (1/2oz) N/A

DRILLING:
 REFERENCE: AS SHOWN NC_DRILL FILES
 PTH MIN COPPER THICKNESS: 1MIL OTHER _____

BOARD FINISH:
 SILKSCREEN: TOP BOTTOM
 SILKSCREEN COLOR: WHITE OTHER _____
 SOLDER RESIST COLOR:
 GREEN BLUE OTHER _____

SURFACE FINISH: IMMERSION GOLD (ENIG) ENEPIG
 IMM. TIN/SILVER OR EQUIV OTHER _____

ARRAY/PANEL: CUT AND TRM PER MECH LAYER 1
 N.C. ROUTE V. SCORE

CERTIFICATION: MATERIALS AND WORKMANSHIP FOR ALL PCBs
 TO MEET OR EXCEED THE REQUIREMENTS OF:
 ANSI IPC-A-600F CLASS -> 1 2 3
 UL 94V-0 RoHS OTHER PER ORDER

ADDITIONAL REQUIREMENTS: VIA TENTING: YES NO
 MICROSECTION: YES IMPEDANCE CONTROL: YES NO
 BARE BOARD ELEC. TEST: NONE REQUIRED PER ORDER
 MANUFACTURER'S UL: RAIL METAL SILK



TIDA-01021

DESIGNED FOR:
 Public Release

FILE NAME:
 TIDA-01021_E2.PcbDoc

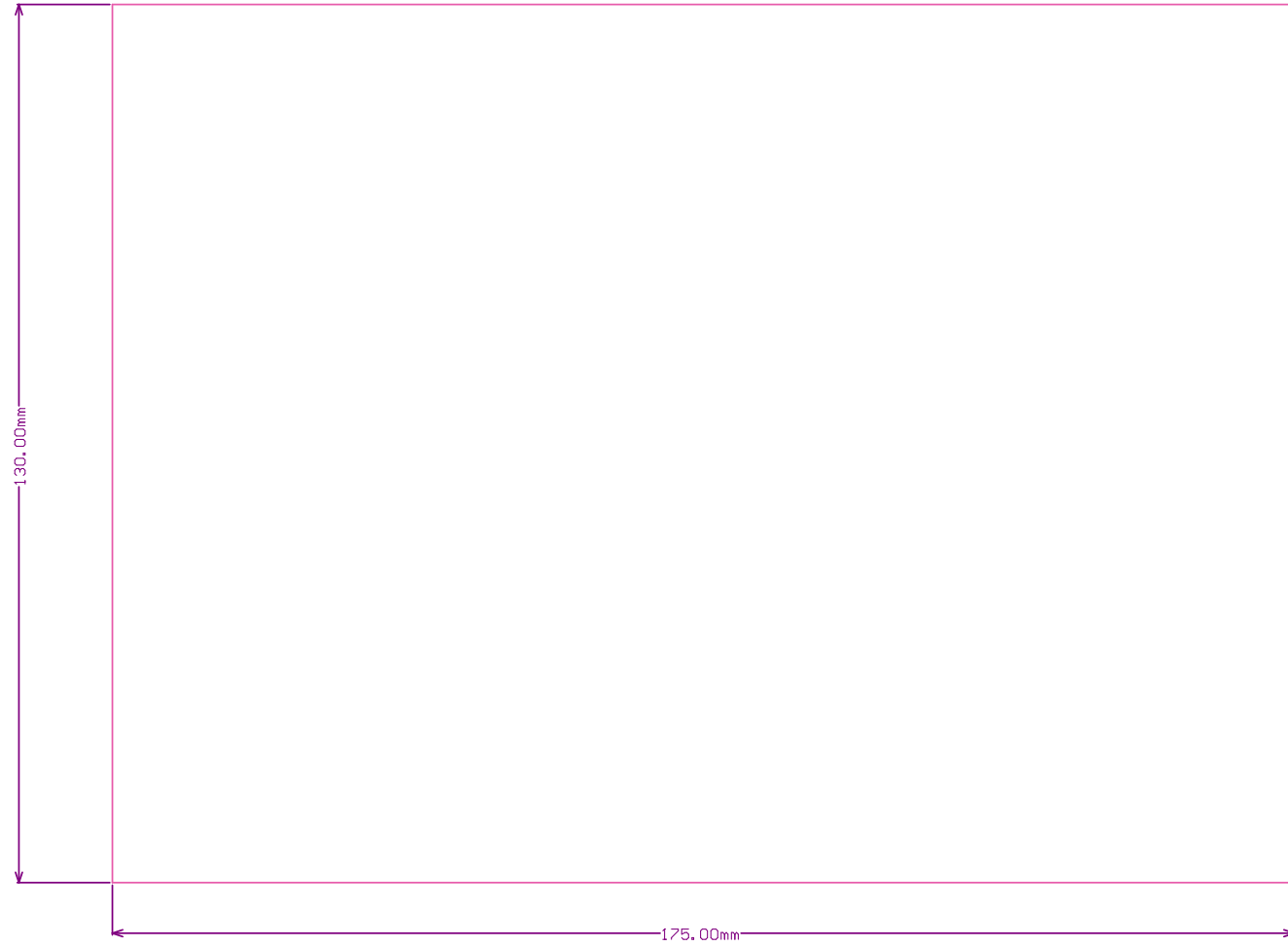
ENGINEER: Ajeet Pal LAYOUT BY: Avinash N

SCALE: 0.92 ALTIM DESIGNER VERSION: 16.1.9.221

ALL ARTWORK VIEWED FROM TOP SIDE	BOARD #: TIDA-01021	REV: E2	SUN REV:
LAYER NAME = DRILL DRAWING	TID #: 01021		
PLOT NAME = Drill Drawing	GENERATED : 10/13/2017 5:38:58 PM	TEXAS INSTRUMENTS	

Texas Instruments (TI) and/or its licensors do not warrant the accuracy or completeness of this specification or any information contained therein. TI and/or its licensors do not warrant that this design will meet the specifications, will be suitable for your application or fit for any particular purpose, or will operate in an implementation. TI and/or its licensors do not warrant that the design is production worthy. You should completely validate and test your design implementation to confirm the system functionality for your application.

1 2 3 4 5 6



ALL ARTWORK VIEWED FROM TOP SIDE	BOARD #: TIDA-01021	REV: e2	SUN REV:
LAYER NAME =	TID #: 01021		
PLOT NAME = Board Dimensions	GENERATED : 10/13/2017 5:39:01 PM	TEXAS INSTRUMENTS	

IMPORTANT NOTICE FOR TI DESIGN INFORMATION AND RESOURCES

Texas Instruments Incorporated ("TI") technical, application or other design advice, services or information, including, but not limited to, reference designs and materials relating to evaluation modules, (collectively, "TI Resources") are intended to assist designers who are developing applications that incorporate TI products; by downloading, accessing or using any particular TI Resource in any way, you (individually or, if you are acting on behalf of a company, your company) agree to use it solely for this purpose and subject to the terms of this Notice.

TI's provision of TI Resources does not expand or otherwise alter TI's applicable published warranties or warranty disclaimers for TI products, and no additional obligations or liabilities arise from TI providing such TI Resources. TI reserves the right to make corrections, enhancements, improvements and other changes to its TI Resources.

You understand and agree that you remain responsible for using your independent analysis, evaluation and judgment in designing your applications and that you have full and exclusive responsibility to assure the safety of your applications and compliance of your applications (and of all TI products used in or for your applications) with all applicable regulations, laws and other applicable requirements. You represent that, with respect to your applications, you have all the necessary expertise to create and implement safeguards that (1) anticipate dangerous consequences of failures, (2) monitor failures and their consequences, and (3) lessen the likelihood of failures that might cause harm and take appropriate actions. You agree that prior to using or distributing any applications that include TI products, you will thoroughly test such applications and the functionality of such TI products as used in such applications. TI has not conducted any testing other than that specifically described in the published documentation for a particular TI Resource.

You are authorized to use, copy and modify any individual TI Resource only in connection with the development of applications that include the TI product(s) identified in such TI Resource. NO OTHER LICENSE, EXPRESS OR IMPLIED, BY ESTOPPEL OR OTHERWISE TO ANY OTHER TI INTELLECTUAL PROPERTY RIGHT, AND NO LICENSE TO ANY TECHNOLOGY OR INTELLECTUAL PROPERTY RIGHT OF TI OR ANY THIRD PARTY IS GRANTED HEREIN, including but not limited to any patent right, copyright, mask work right, or other intellectual property right relating to any combination, machine, or process in which TI products or services are used. Information regarding or referencing third-party products or services does not constitute a license to use such products or services, or a warranty or endorsement thereof. Use of TI Resources may require a license from a third party under the patents or other intellectual property of the third party, or a license from TI under the patents or other intellectual property of TI.

TI RESOURCES ARE PROVIDED "AS IS" AND WITH ALL FAULTS. TI DISCLAIMS ALL OTHER WARRANTIES OR REPRESENTATIONS, EXPRESS OR IMPLIED, REGARDING TI RESOURCES OR USE THEREOF, INCLUDING BUT NOT LIMITED TO ACCURACY OR COMPLETENESS, TITLE, ANY EPIDEMIC FAILURE WARRANTY AND ANY IMPLIED WARRANTIES OF MERCHANTABILITY, FITNESS FOR A PARTICULAR PURPOSE, AND NON-INFRINGEMENT OF ANY THIRD PARTY INTELLECTUAL PROPERTY RIGHTS.

TI SHALL NOT BE LIABLE FOR AND SHALL NOT DEFEND OR INDEMNIFY YOU AGAINST ANY CLAIM, INCLUDING BUT NOT LIMITED TO ANY INFRINGEMENT CLAIM THAT RELATES TO OR IS BASED ON ANY COMBINATION OF PRODUCTS EVEN IF DESCRIBED IN TI RESOURCES OR OTHERWISE. IN NO EVENT SHALL TI BE LIABLE FOR ANY ACTUAL, DIRECT, SPECIAL, COLLATERAL, INDIRECT, PUNITIVE, INCIDENTAL, CONSEQUENTIAL OR EXEMPLARY DAMAGES IN CONNECTION WITH OR ARISING OUT OF TI RESOURCES OR USE THEREOF, AND REGARDLESS OF WHETHER TI HAS BEEN ADVISED OF THE POSSIBILITY OF SUCH DAMAGES.

You agree to fully indemnify TI and its representatives against any damages, costs, losses, and/or liabilities arising out of your non-compliance with the terms and provisions of this Notice.

This Notice applies to TI Resources. Additional terms apply to the use and purchase of certain types of materials, TI products and services. These include; without limitation, TI's standard terms for semiconductor products (<http://www.ti.com/sc/docs/stdterms.htm>), [evaluation modules](#), and [samples](http://www.ti.com/sc/docs/sampterm.htm) (<http://www.ti.com/sc/docs/sampterm.htm>).

Mailing Address: Texas Instruments, Post Office Box 655303, Dallas, Texas 75265
Copyright © 2018, Texas Instruments Incorporated