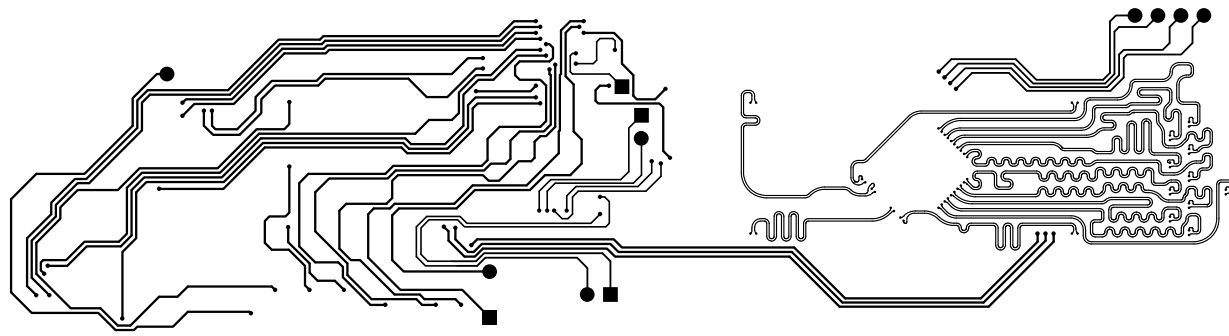
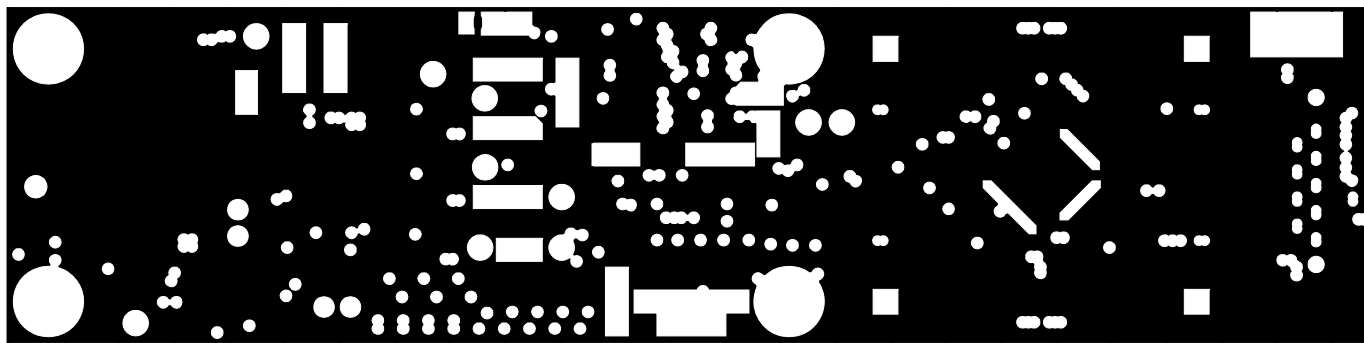


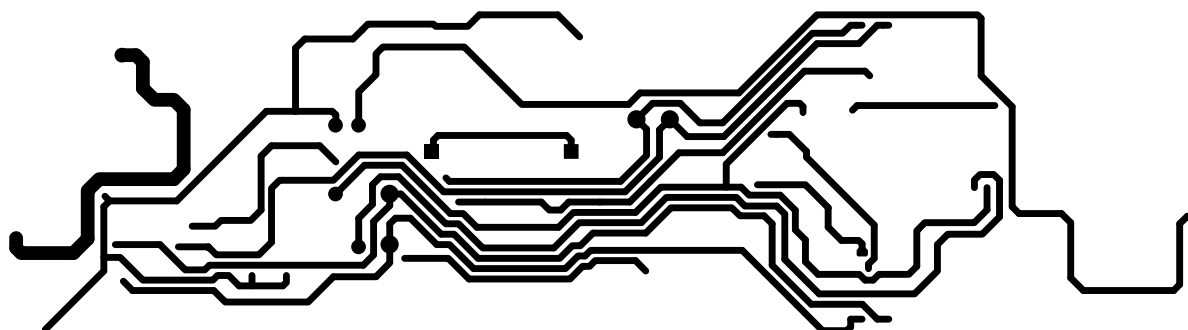
ALL ARTWORK VIEWED FROM TOP SIDE	BOARD #: TIDA-01005	REV: E1	SUN REV: Not In VersionControl
LAYER NAME = Layer 2 - GND	TID #: 01005		
PLOT NAME = TIDA-01005E1.G1	GENERATED : 8/8/2016	3:39:15 PM	TEXAS INSTRUMENTS



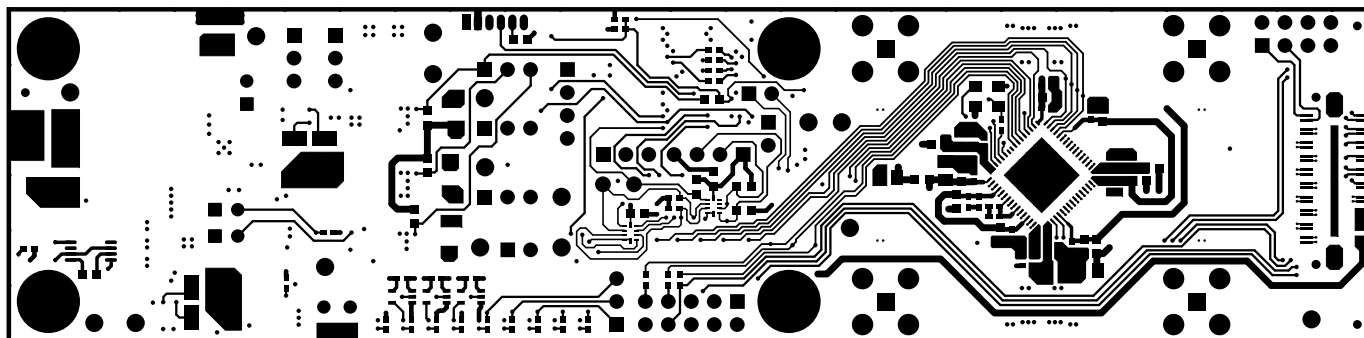
ALL ARTWORK VIEWED FROM TOP SIDE	BOARD #: TIDA-01005	REV: E1	SUN REV: Not In VersionControl
LAYER NAME = Layer 3 - Sensitive	TID #: 01005		
PLOT NAME = TIDA-01005E1.G2	GENERATED : 8/8/2016	3:39:15 PM	TEXAS INSTRUMENTS



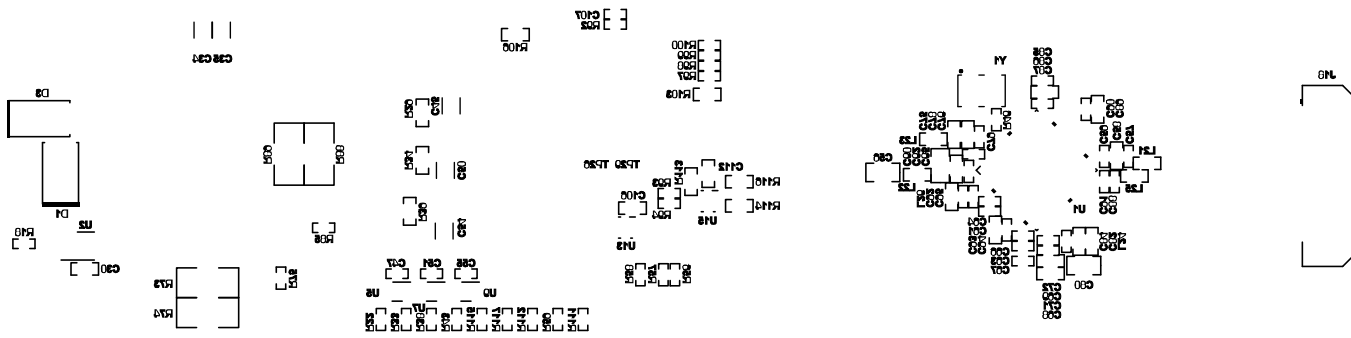
ALL ARTWORK VIEWED FROM TOP SIDE	BOARD #: TIDA-01005	REV: E1	SUN REV: Not In VersionControl
LAYER NAME = Layer 4 - GND	TID #: 01005		
PLOT NAME = TIDA-01005E1.G3	GENERATED : 8/8/2016	3:39:15 PM	TEXAS INSTRUMENTS



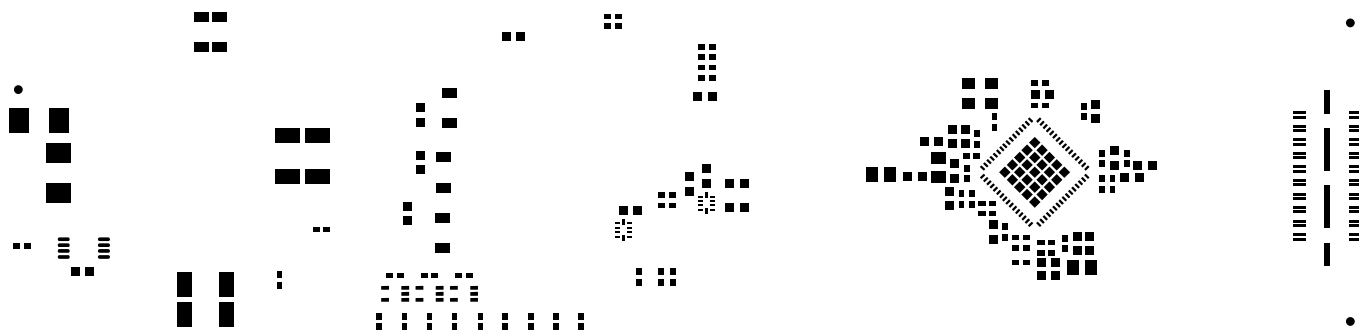
ALL ARTWORK VIEWED FROM TOP SIDE	BOARD #: TIDA-01005	REV: E1	SUN REV: Not In VersionControl
LAYER NAME = Layer 5 - PWR	TID #: 01005		
PLOT NAME = TIDA-01005E1.G4	GENERATED : 8/8/2016	3:39:15 PM	TEXAS INSTRUMENTS



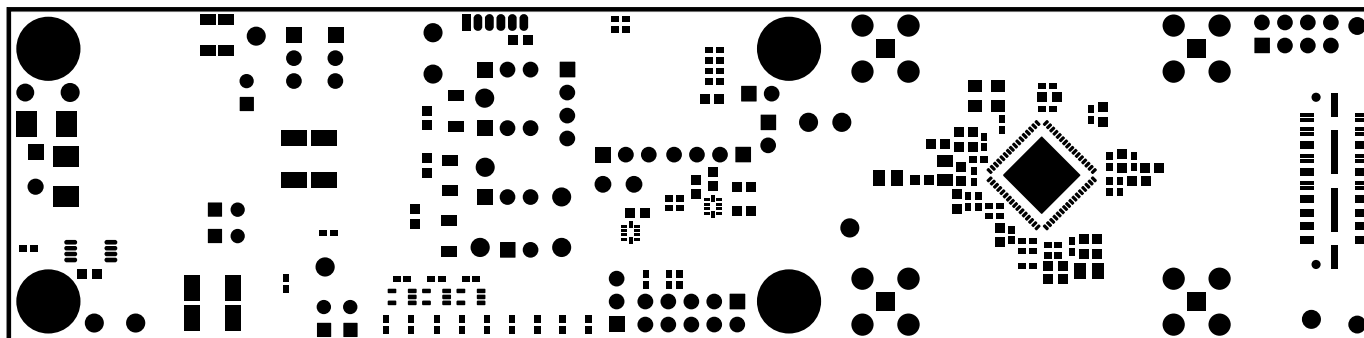
ALL ARTWORK VIEWED FROM TOP SIDE	BOARD #: TIDA-01005	REV: E1	SUN REV: Not In VersionControl
LAYER NAME = Layer 6 - Bottom Layer	TID #: 01005		
PLOT NAME = TIDA-01005E1.GBL	GENERATED : 8/8/2016	3:39:15 PM	TEXAS INSTRUMENTS



ALL ARTWORK VIEWED FROM TOP SIDE	BOARD #: TIDA-01005	REV: E1	SUN REV: Not In VersionControl
LAYER NAME = Bottom Overlay	TID #: 01005		
PLOT NAME = TIDA-01005E1.GBO	GENERATED : 8/8/2016	3:39:18 PM	TEXAS INSTRUMENTS

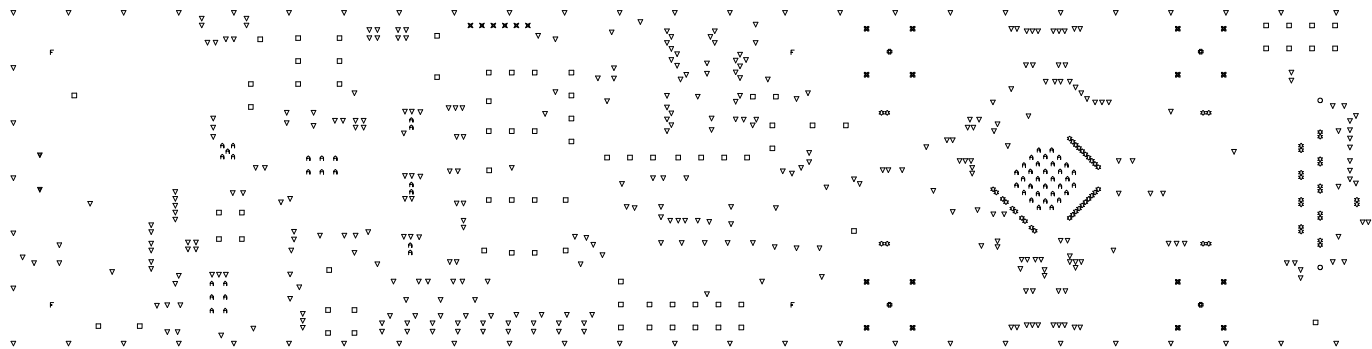


ALL ARTWORK VIEWED FROM TOP SIDE	BOARD #: TIDA-01005	REV: E1	SUN REV: Not In VersionControl
LAYER NAME = Bottom Paste	TID #: 01005		
PLOT NAME = TIDA-01005E1.GBP	GENERATED : 8/8/2016	3:39:18 PM	TEXAS INSTRUMENTS



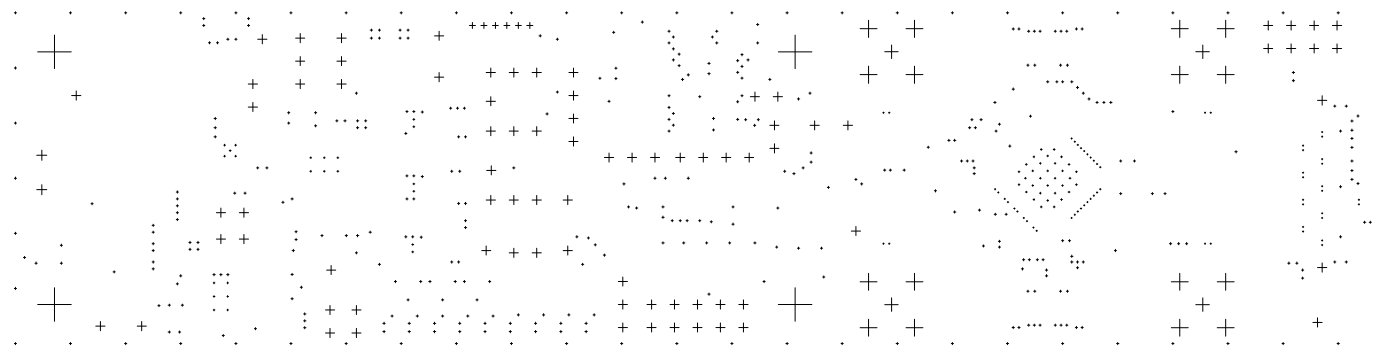
ALL ARTWORK VIEWED FROM TOP SIDE	BOARD #: TIDA-01005	REV: E1	SUN REV: Not In VersionControl
LAYER NAME = Bottom Solder	TID #: 01005		
PLOT NAME = TIDA-01005E1.GBS	GENERATED : 8/8/2016	3:39:17 PM	TEXAS INSTRUMENTS



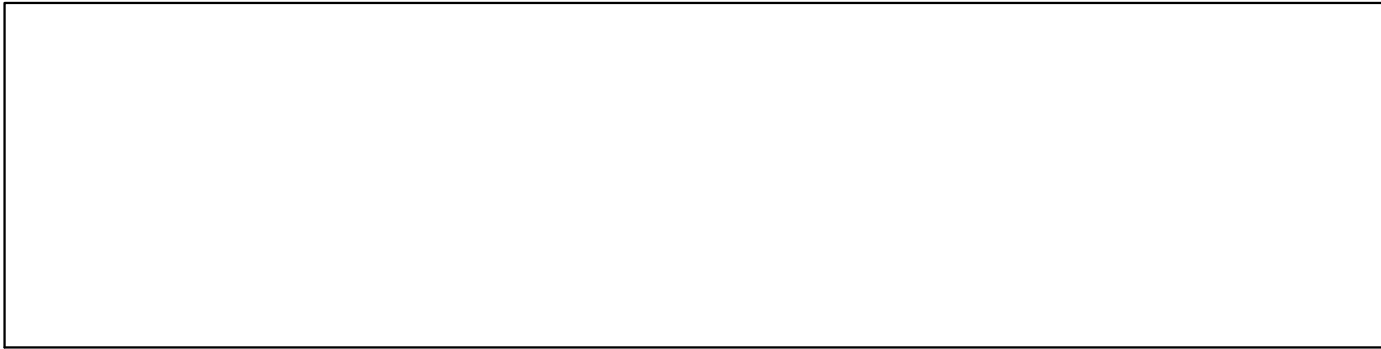


Symbol	Quantity	Finished Hole Size	Plated	Hole Type	Drill Lay
○	2	40.16mil (1.020mm)	NPTH	Round	Layer 1 -
☆	58	6.00mil (0.152mm)	PTH	Round	Layer 1 -
△	55	7.87mil (0.200mm)	PTH	Round	Layer 1 -
▽	414	10.00mil (0.254mm)	PTH	Round	Layer 1 -
✕	6	26.00mil (0.650mm)	PTH	Round	Layer 1 -
□	70	40.00mil (1.016mm)	PTH	Round	Layer 1 -
▽	2	43.31mil (1.100mm)	PTH	Round	Layer 1 -
⊗	4	50.00mil (1.500mm)	PTH	Round	Layer 1 -
⊗	16	74.80mil (1.900mm)	PTH	Round	Layer 1 -
F	4	145.67mil (3.700mm)	PTH	Round	Layer 1 -
	<b>640 Total</b>				

ALL ARTWORK VIEWED FROM TOP SIDE	BOARD #: TIDA-01005	REV: E1	SUN REV: Not In VersionControl
LAYER NAME = Drill Drawing	TID #: 01005		
PLOT NAME = TIDA-01005E1.GD1	GENERATED : 8/8/2016	3:39:19 PM	TEXAS INSTRUMENTS



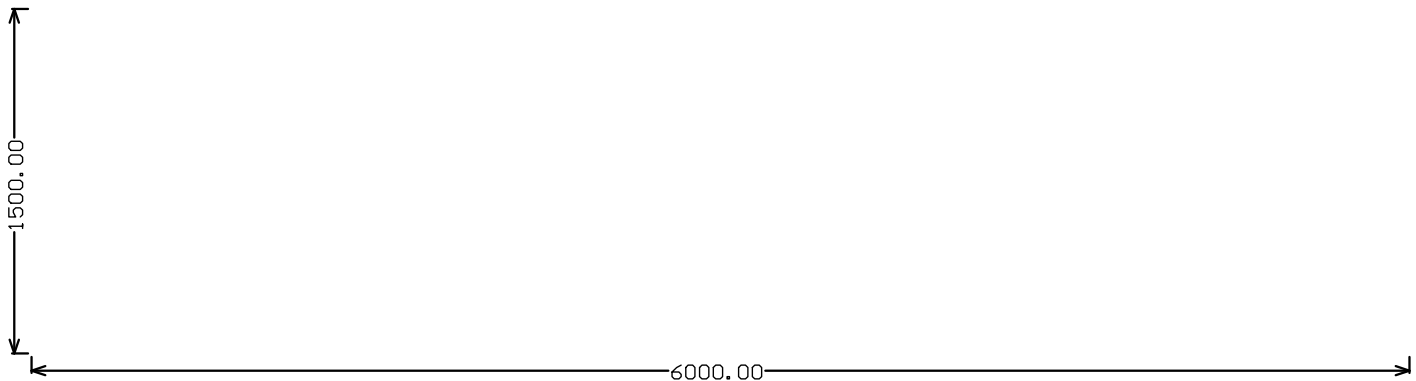
ALL ARTWORK VIEWED FROM TOP SIDE	BOARD #: TIDA-01005	REV: E1	SUN REV: Not In VersionControl
LAYER NAME = Drill Guide	TID #: 01005		
PLOT NAME = TIDA-01005E1.GG1	GENERATED : 8/8/2016	3:39:21 PM	TEXAS INSTRUMENTS



ALL ARTWORK VIEWED FROM TOP SIDE	BOARD #: TIDA-01005	REV: E1	SUN REV: Not In VersionControl
LAYER NAME = M1 Board Outline	TID #: 01005		
PLOT NAME = TIDA-01005E1.GM1	GENERATED : 8/8/2016	3:39:18 PM	TEXAS INSTRUMENTS

ALL ARTWORK VIEWED FROM TOP SIDE	BOARD #: TIDA-01005	REV: E1	SUN REV: Not In VersionControl
LAYER NAME = M10 Fab Notes	TID #: 01005		
PLOT NAME = TIDA-01005E1.GM10	GENERATED : 8/8/2016	3:39:19 PM	TEXAS INSTRUMENTS

ALL ARTWORK VIEWED FROM TOP SIDE	BOARD #: TIDA-01005	REV: E1	SUN REV: Not In VersionControl
LAYER NAME = M12 Stackup	TID #: 01005		
PLOT NAME = TIDA-01005E1.GM12	GENERATED : 8/8/2016	3:39:19 PM	TEXAS INSTRUMENTS



ALL ARTWORK VIEWED FROM TOP SIDE	BOARD #: TIDA-01005	REV: E1	SUN REV: Not In VersionControl
LAYER NAME = M2 Board Dimensions	TID #: 01005		
PLOT NAME = TIDA-01005E1.GM2	GENERATED : 8/8/2016	3:39:18 PM	TEXAS INSTRUMENTS

C

D

ALL ARTWORK VIEWED FROM TOP SIDE

BOARD #: TIDA-01005

REV: E1

SUN REV: Not In VersionControl

Texas Instruments (TI) and/or its licensors do not warrant that the information contained herein, or any information contained therein, TI and/or its licensors, will be suitable for your application without an implementation. TI and/or its licensors do not warrant that you will completely validate and test your design implementation.

LAYER NAME = M9 Title Sheet

TID #: 01005

PLOT NAME = TIDA-01005E1.GM9

GENERATED : 8/8/2016 3:39:18 PM

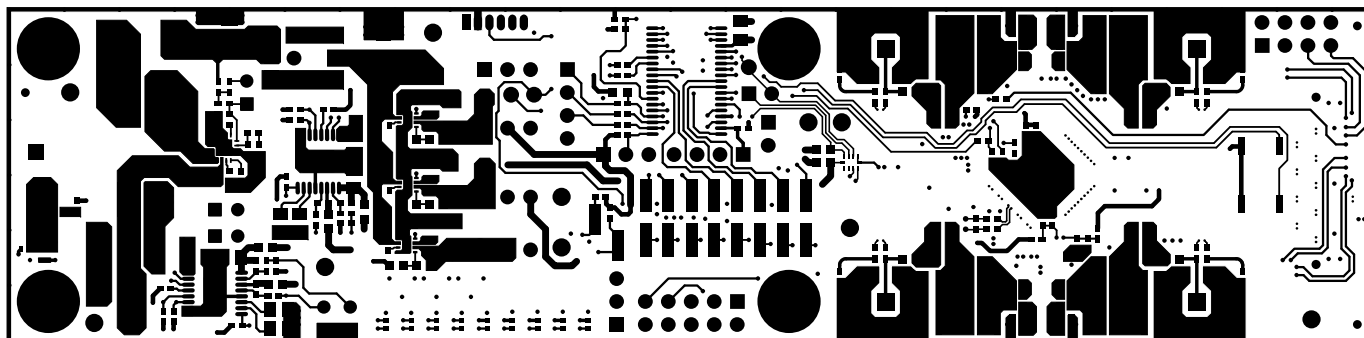
TEXAS INSTRUMENTS

1

2

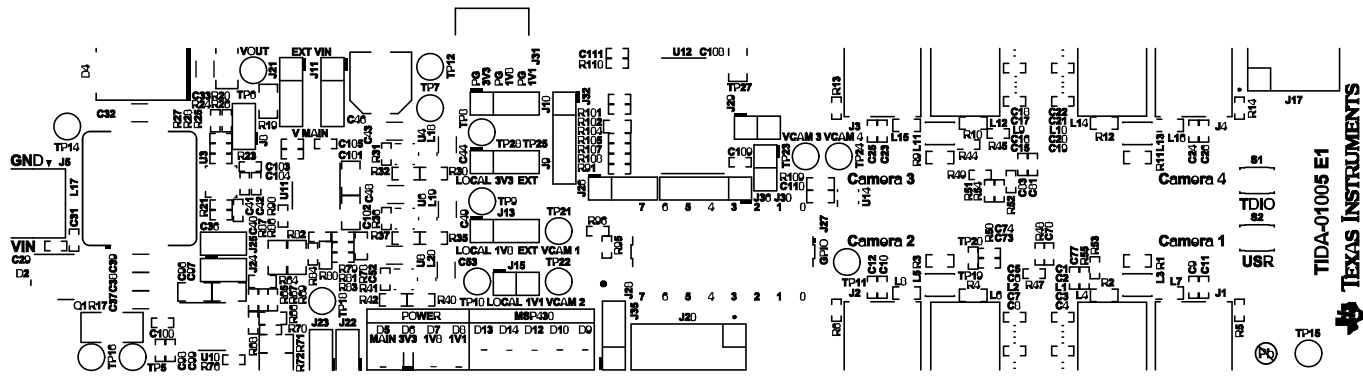
3

4

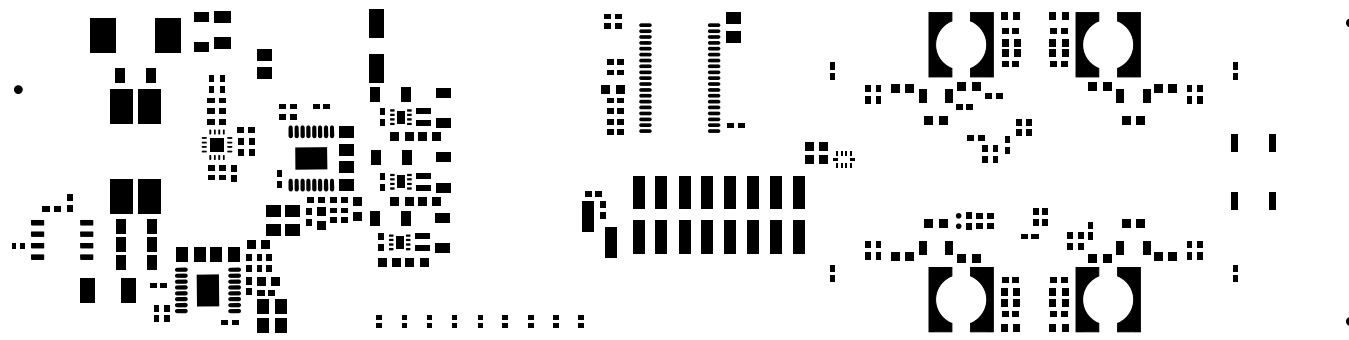


ALL ARTWORK VIEWED FROM TOP SIDE	BOARD #: TIDA-01005	REV: E1	SUN REV: Not In VersionControl
LAYER NAME = Layer 1 - Top Layer	TID #: 01005		
PLOT NAME = TIDA-01005E1.GTL	GENERATED : 8/8/2016	3:39:14 PM	TEXAS INSTRUMENTS

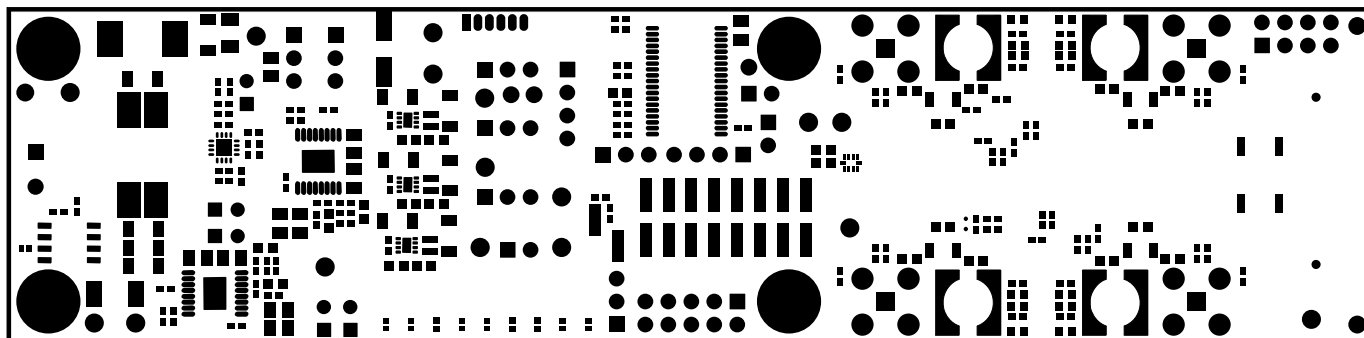




ALL ARTWORK VIEWED FROM TOP SIDE	BOARD #: TIDA-01005	REV: E1	SUN REV: Not In VersionControl
LAYER NAME = Top Overlay	TID #: 01005		
PLOT NAME = TIDA-01005E1.GTO	GENERATED : 8/8/2016	3:39:16 PM	TEXAS INSTRUMENTS

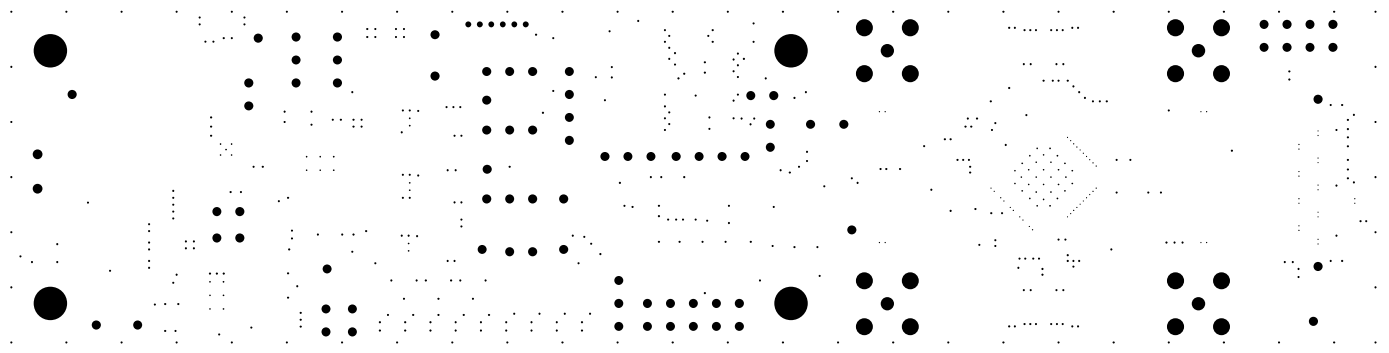


ALL ARTWORK VIEWED FROM TOP SIDE	BOARD #: TIDA-01005	REV: E1	SUN REV: Not In VersionControl
LAYER NAME = Top Paste	TID #: 01005		
PLOT NAME = TIDA-01005E1.GTP	GENERATED : 8/8/2016	3:39:17 PM	TEXAS INSTRUMENTS



ALL ARTWORK VIEWED FROM TOP SIDE	BOARD #: TIDA-01005	REV: E1	SUN REV: Not In VersionControl
LAYER NAME = Top Solder	TID #: 01005		
PLOT NAME = TIDA-01005E1.GTS	GENERATED : 8/8/2016	3:39:17 PM	TEXAS INSTRUMENTS





## IMPORTANT NOTICE FOR TI REFERENCE DESIGNS

Texas Instruments Incorporated ("TI") reference designs are solely intended to assist designers ("Designer(s)") who are developing systems that incorporate TI products. TI has not conducted any testing other than that specifically described in the published documentation for a particular reference design.

TI's provision of reference designs and any other technical, applications or design advice, quality characterization, reliability data or other information or services does not expand or otherwise alter TI's applicable published warranties or warranty disclaimers for TI products, and no additional obligations or liabilities arise from TI providing such reference designs or other items.

TI reserves the right to make corrections, enhancements, improvements and other changes to its reference designs and other items.

Designer understands and agrees that Designer remains responsible for using its independent analysis, evaluation and judgment in designing Designer's systems and products, and has full and exclusive responsibility to assure the safety of its products and compliance of its products (and of all TI products used in or for such Designer's products) with all applicable regulations, laws and other applicable requirements. Designer represents that, with respect to its applications, it has all the necessary expertise to create and implement safeguards that (1) anticipate dangerous consequences of failures, (2) monitor failures and their consequences, and (3) lessen the likelihood of failures that might cause harm and take appropriate actions. Designer agrees that prior to using or distributing any systems that include TI products, Designer will thoroughly test such systems and the functionality of such TI products as used in such systems. Designer may not use any TI products in life-critical medical equipment unless authorized officers of the parties have executed a special contract specifically governing such use. Life-critical medical equipment is medical equipment where failure of such equipment would cause serious bodily injury or death (e.g., life support, pacemakers, defibrillators, heart pumps, neurostimulators, and implantables). Such equipment includes, without limitation, all medical devices identified by the U.S. Food and Drug Administration as Class III devices and equivalent classifications outside the U.S.

Designers are authorized to use, copy and modify any individual TI reference design only in connection with the development of end products that include the TI product(s) identified in that reference design. HOWEVER, NO OTHER LICENSE, EXPRESS OR IMPLIED, BY ESTOPPEL OR OTHERWISE TO ANY OTHER TI INTELLECTUAL PROPERTY RIGHT, AND NO LICENSE TO ANY TECHNOLOGY OR INTELLECTUAL PROPERTY RIGHT OF TI OR ANY THIRD PARTY IS GRANTED HEREIN, including but not limited to any patent right, copyright, mask work right, or other intellectual property right relating to any combination, machine, or process in which TI products or services are used. Information published by TI regarding third-party products or services does not constitute a license to use such products or services, or a warranty or endorsement thereof. Use of the reference design or other items described above may require a license from a third party under the patents or other intellectual property of the third party, or a license from TI under the patents or other intellectual property of TI.

TI REFERENCE DESIGNS AND OTHER ITEMS DESCRIBED ABOVE ARE PROVIDED "AS IS" AND WITH ALL FAULTS. TI DISCLAIMS ALL OTHER WARRANTIES OR REPRESENTATIONS, EXPRESS OR IMPLIED, REGARDING THE REFERENCE DESIGNS OR USE OF THE REFERENCE DESIGNS, INCLUDING BUT NOT LIMITED TO ACCURACY OR COMPLETENESS, TITLE, ANY EPIDEMIC FAILURE WARRANTY AND ANY IMPLIED WARRANTIES OF MERCHANTABILITY, FITNESS FOR A PARTICULAR PURPOSE, AND NON-INFRINGEMENT OF ANY THIRD PARTY INTELLECTUAL PROPERTY RIGHTS.

TI SHALL NOT BE LIABLE FOR AND SHALL NOT DEFEND OR INDEMNIFY DESIGNERS AGAINST ANY CLAIM, INCLUDING BUT NOT LIMITED TO ANY INFRINGEMENT CLAIM THAT RELATES TO OR IS BASED ON ANY COMBINATION OF PRODUCTS AS DESCRIBED IN A TI REFERENCE DESIGN OR OTHERWISE. IN NO EVENT SHALL TI BE LIABLE FOR ANY ACTUAL, DIRECT, SPECIAL, COLLATERAL, INDIRECT, PUNITIVE, INCIDENTAL, CONSEQUENTIAL OR EXEMPLARY DAMAGES IN CONNECTION WITH OR ARISING OUT OF THE REFERENCE DESIGNS OR USE OF THE REFERENCE DESIGNS, AND REGARDLESS OF WHETHER TI HAS BEEN ADVISED OF THE POSSIBILITY OF SUCH DAMAGES.

TI's standard terms of sale for semiconductor products (<http://www.ti.com/sc/docs/stdterms.htm>) apply to the sale of packaged integrated circuit products. Additional terms may apply to the use or sale of other types of TI products and services.

Designer will fully indemnify TI and its representatives against any damages, costs, losses, and/or liabilities arising out of Designer's non-compliance with the terms and provisions of this Notice.

Mailing Address: Texas Instruments, Post Office Box 655303, Dallas, Texas 75265  
Copyright © 2016, Texas Instruments Incorporated