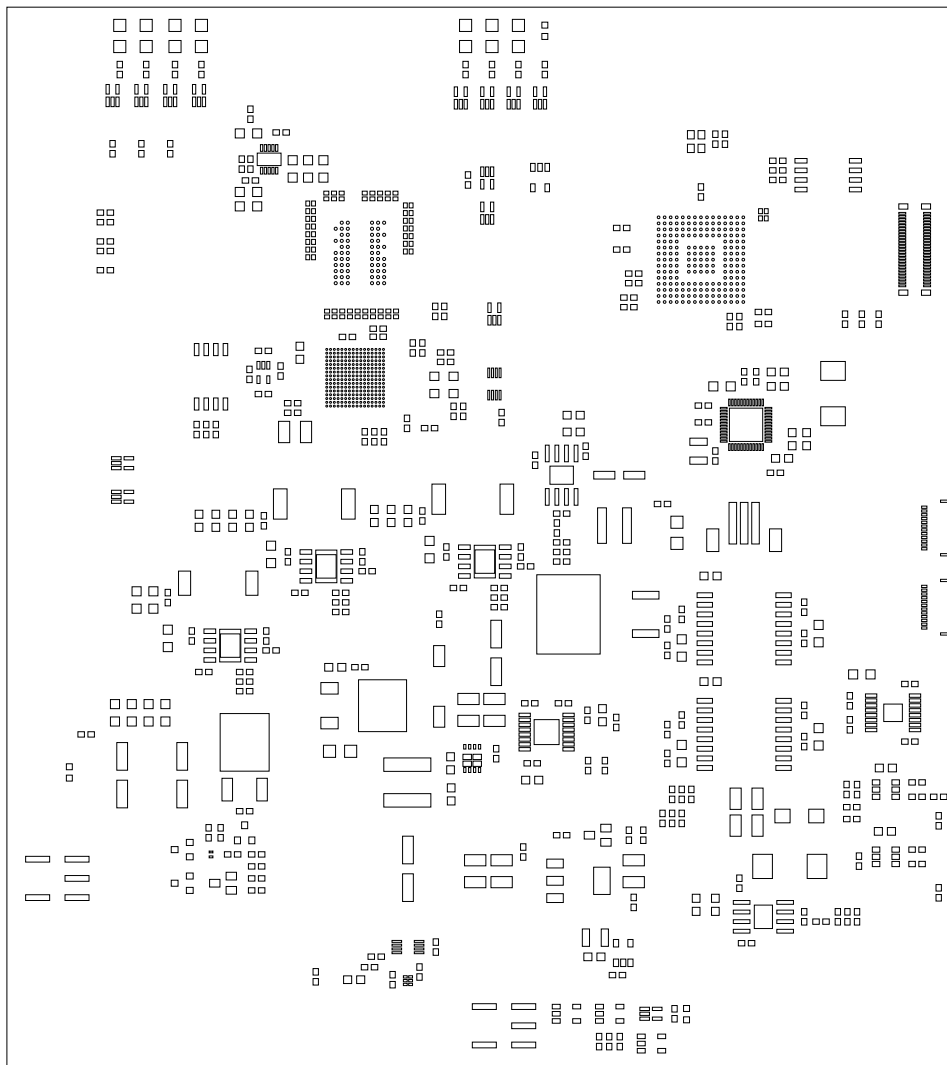


CUSTOMER NAME		TEXAS INSTRUMENTS				
BOARD NAME	DLPC1438/DLPA2005 REFERENCE BOARD		DESCRIPTION			
BOARD NO.	REV	DATE	PRJ#	SH	OF	
2511671	A	30-JUN-2021	TIDL-121032-01	11	17	
			SOLDERMASK - PRIMARY SIDE			



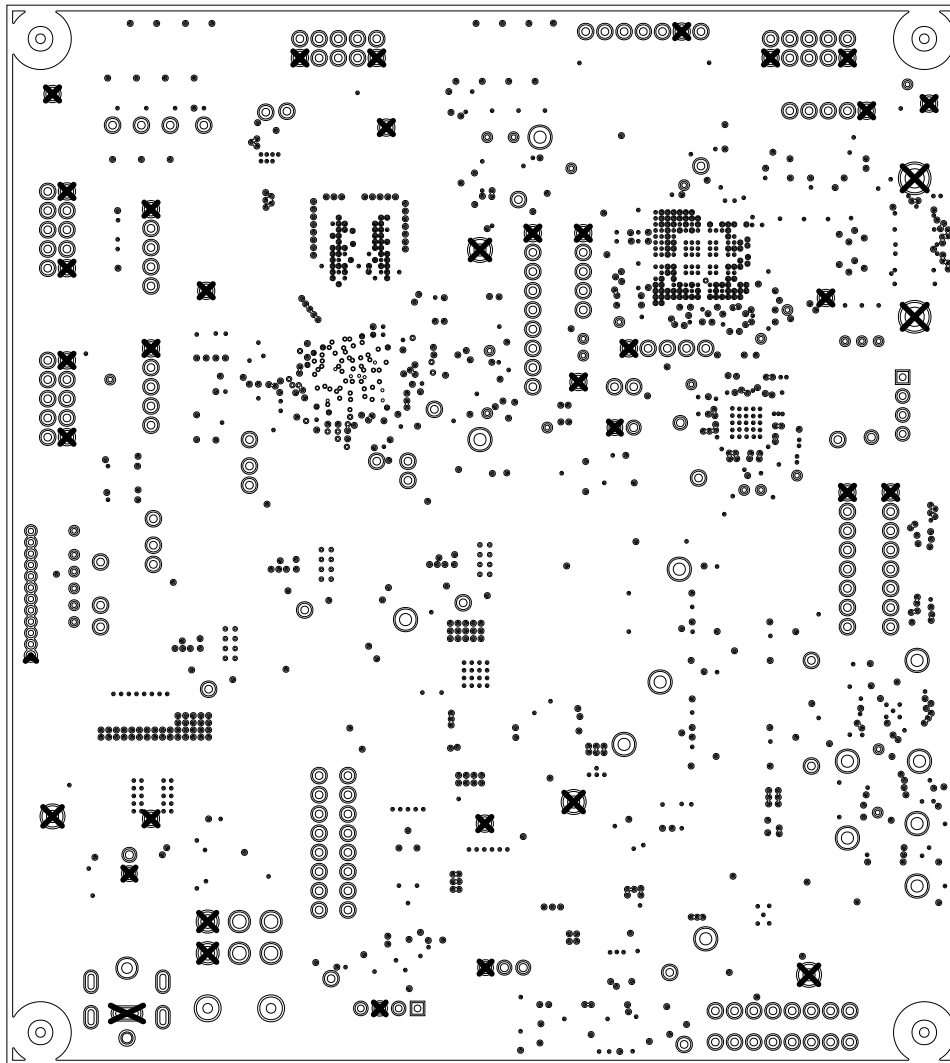
Design, Quick-Turn and Production
 www.qcg.com
 972-931-4100 Fax 972-931-4104



CUSTOMER NAME		TEXAS INSTRUMENTS				
BOARD NAME	DLPC1438/DLPA2005 REFERENCE BOARD		DESCRIPTION SOLDERPASTE - PRIMARY SIDE			
BOARD NO.	REV	DATE	PRJ#	SH	OF	
2511671	A	30-JUN-2021	TIDL-121032-01	15	17	



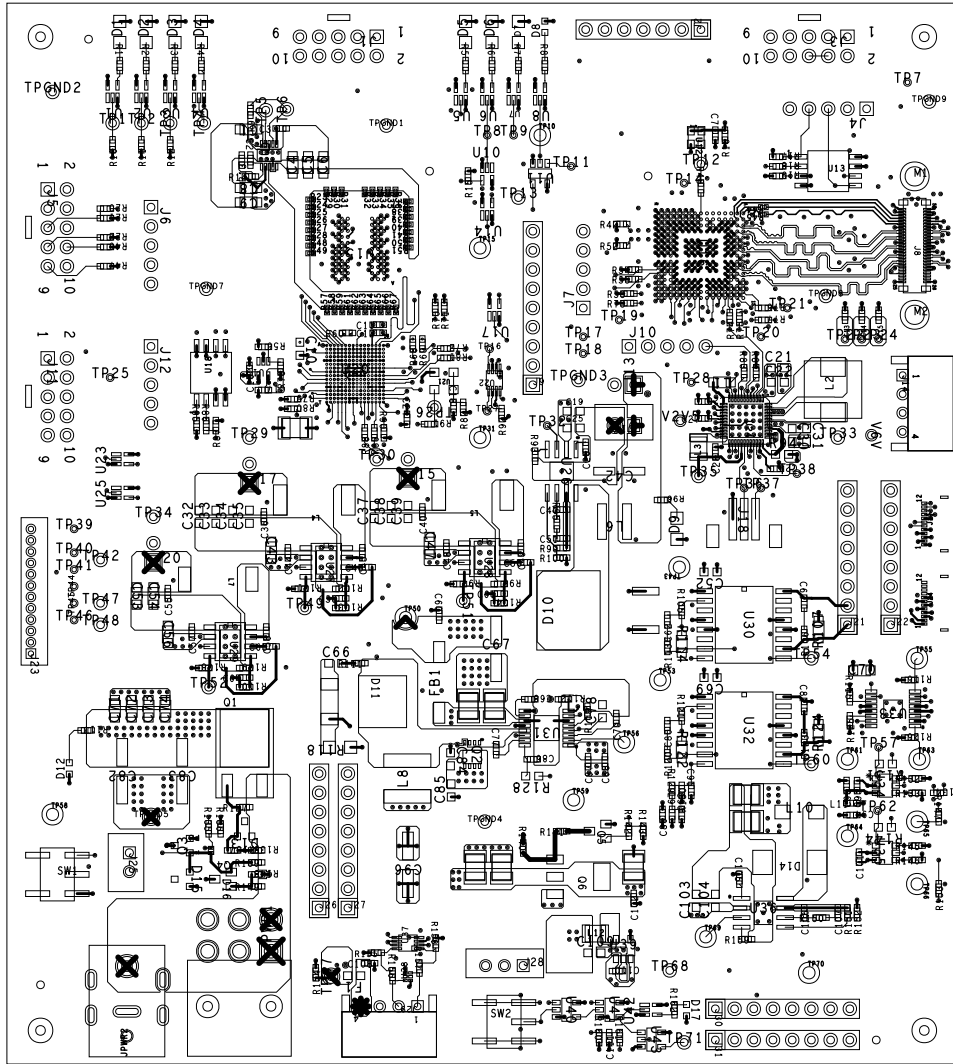
Design, Quick-Turn and Production
 www.qcg.com
 972-931-4100 Fax 972-931-4104



CUSTOMER NAME		TEXAS INSTRUMENTS				
BOARD NAME	DLPC1438/DLPA2005 REFERENCE BOARD		DESCRIPTION LAYER 5 - GND PLANE			
BOARD NO.	REV	DATE	PRJ#	SH	OF	
2511671	A	30-JUN-2021	TIDL-121032-01	5	17	



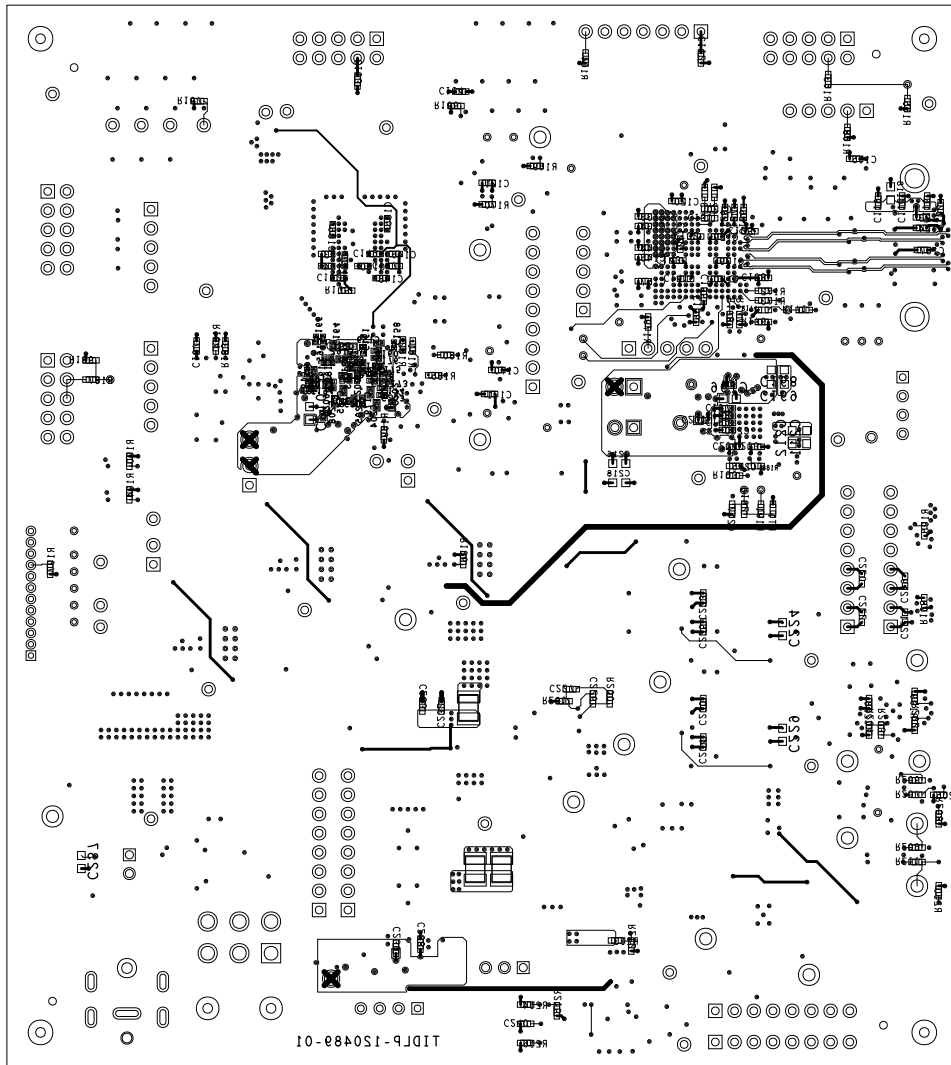
Design, Quick-Turn and Production
 www.qcc.com
 972-931-4100 Fax 972-931-4104



CUSTOMER NAME		TEXAS INSTRUMENTS			
BOARD NAME		DLPC1438/DLPA2005 REFERENCE BOARD		DESCRIPTION LAYER 1 - PRIMARY SIDE	
BOARD NO.	2511671	REV	A	DATE	30-JUN-2021
		PRJ#	TIDL-121032-01	SH	1 OF 17

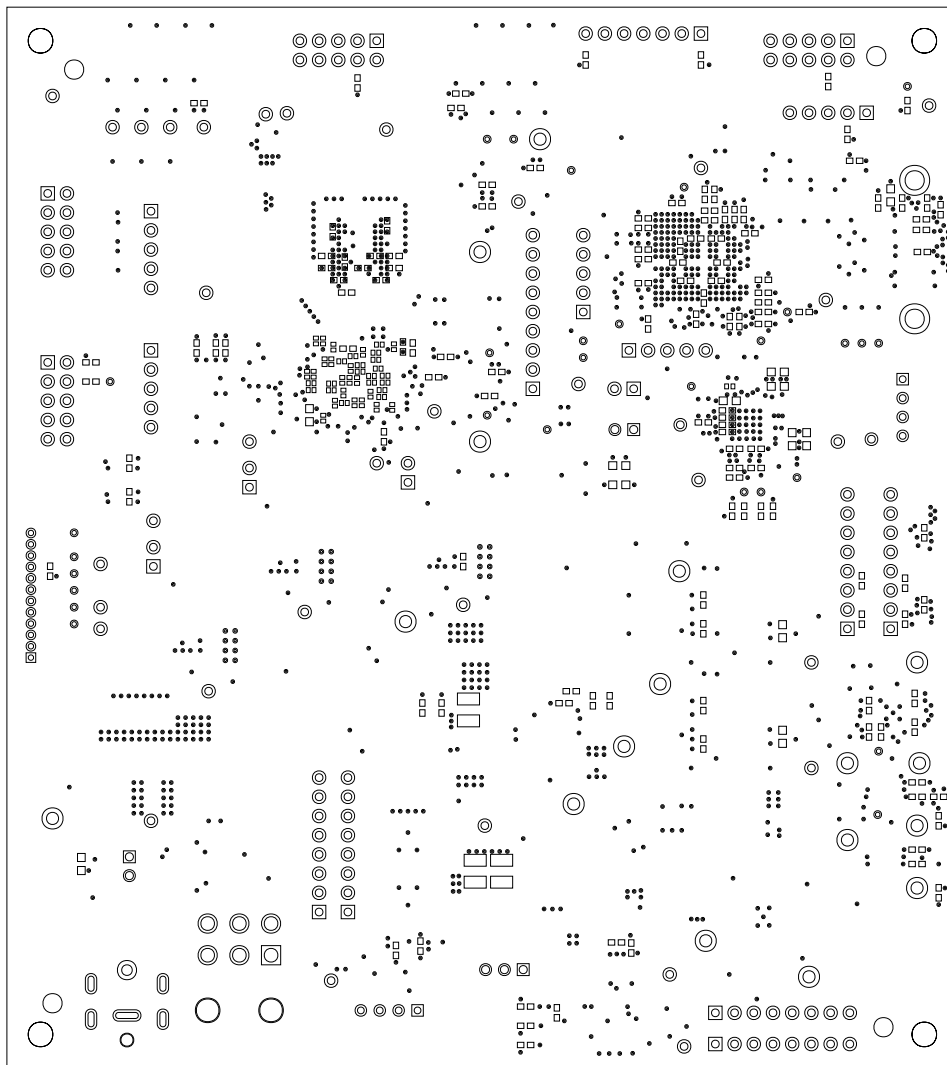


Design, Quick-Turn and Production
 972-931-4100 www.qcc.com
 Fax 972-931-4104



CUSTOMER NAME		TEXAS INSTRUMENTS				
BOARD NAME	DLPC1438/DLPA2005 REFERENCE BOARD		DESCRIPTION LAYER 10- SECONDARY SIDE			
BOARD NO.	2511671	REV A	DATE 30-JUN-2021	PRJ# TIDLP-121032-01	SH 10	DF 17

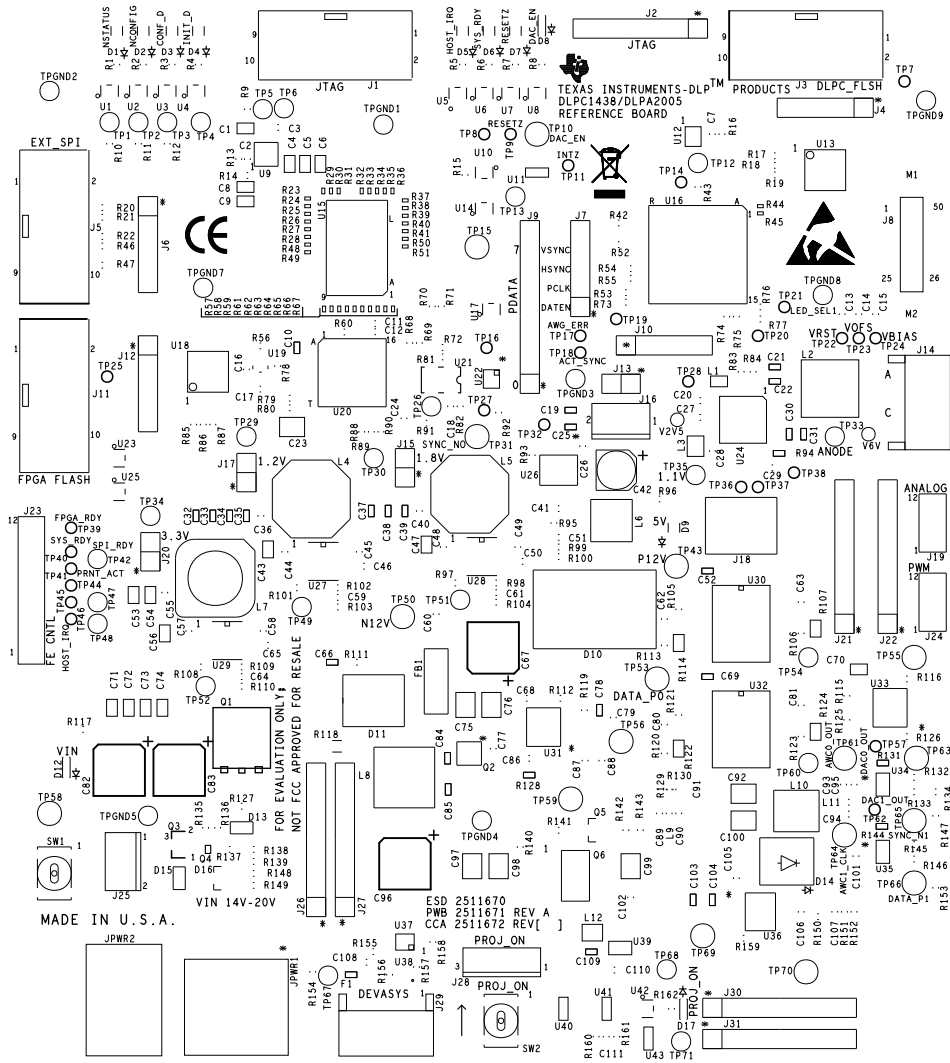
Design, Quick-Turn and Production
972-931-4100 www.qcc.com
Fax 972-931-4104



CUSTOMER NAME		TEXAS INSTRUMENTS				
BOARD NAME	DLPC1438/DLPA2005 REFERENCE BOARD		DESCRIPTION SOLDERMASK - SECONDARY SIDE			
BOARD NO.	REV	DATE	PRJ#	SH	OF	
2511671	A	30-JUN-2021	TIDL-121032-01	12	17	

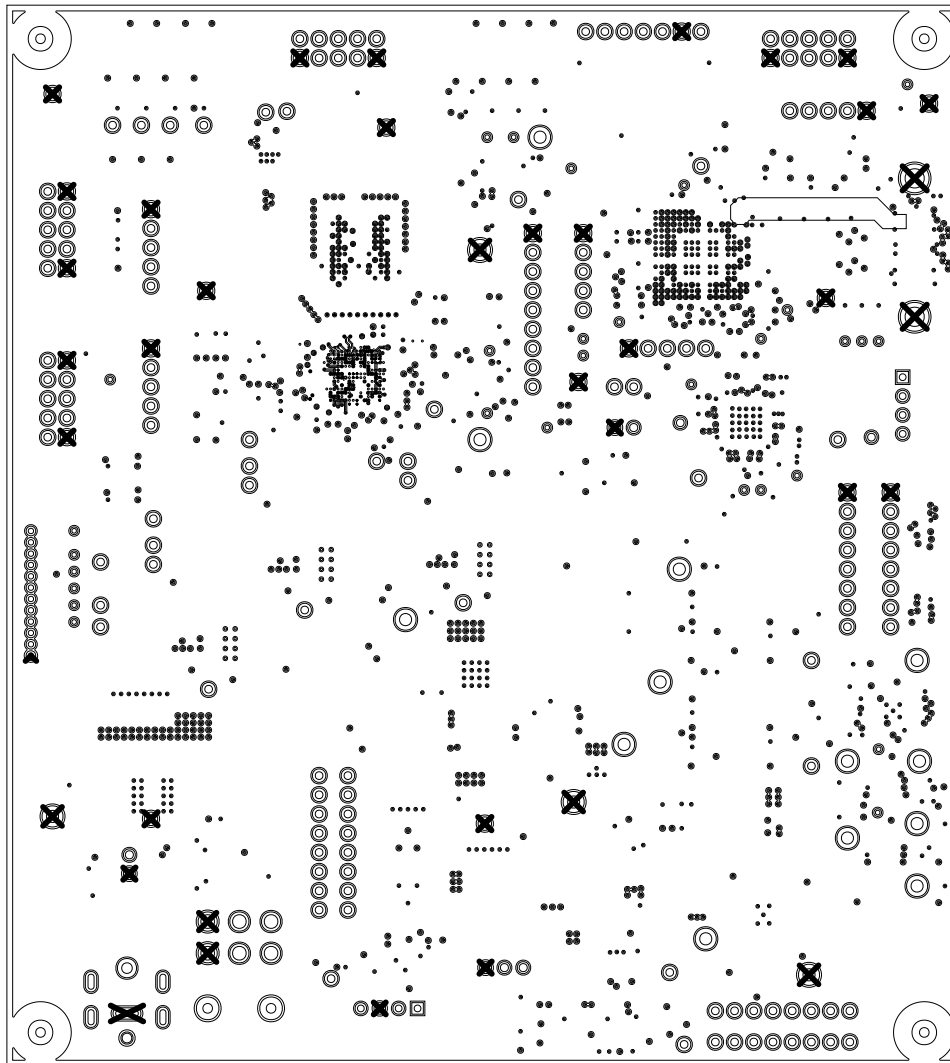


Design, Quick-Turn and Production
www.qcg.com
972-931-4100 fax 972-931-4104



CUSTOMER NAME		TEXAS INSTRUMENTS			
BOARD NAME		DLPC1438/DLPA2005 REFERENCE BOARD		DESCRIPTION SILKSCREEN - PRIMARY SIDE	
BOARD NO.	2511671	REV	A	DATE	30-JUN-2021
		PRJ#	TIDL-121032-01	SH	13 OF 17

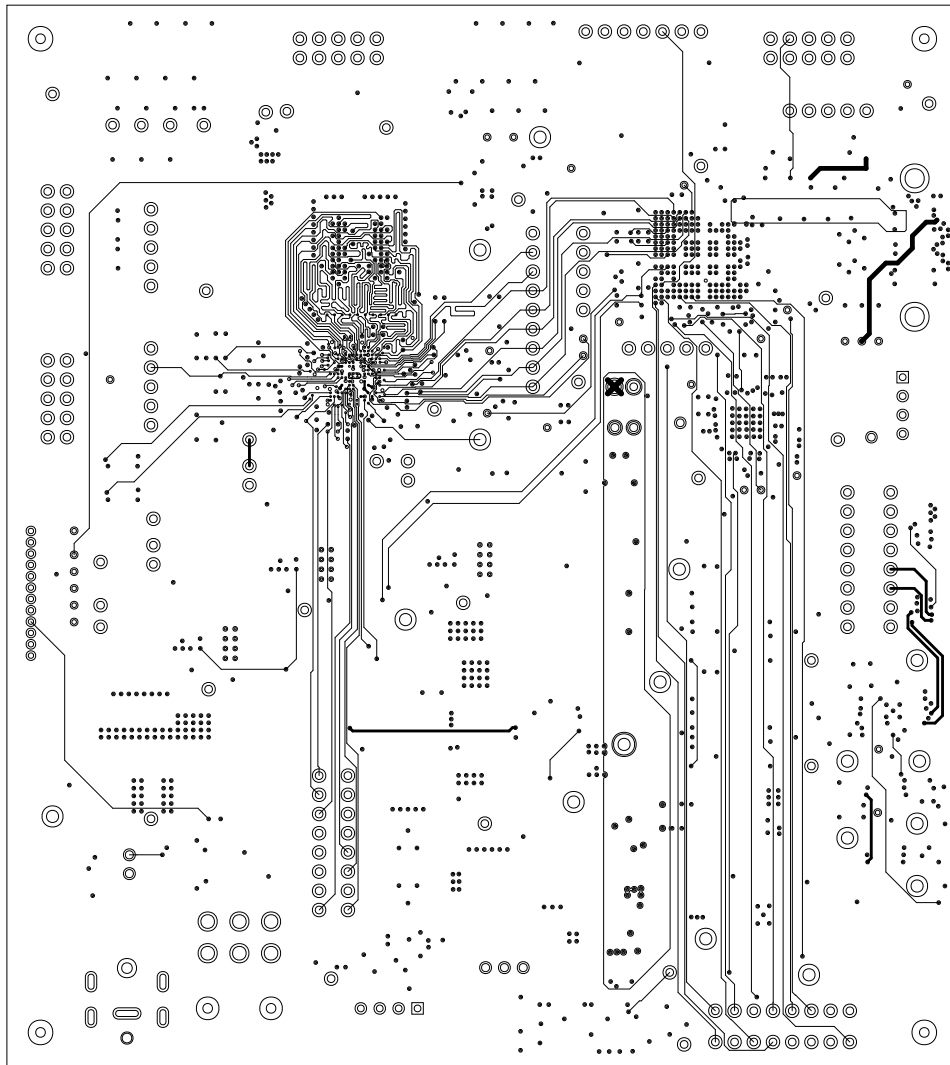
Design, Quick-Turn and Production
972-931-4100 www.qcc.com Fax 972-931-4104



CUSTOMER NAME		TEXAS INSTRUMENTS				
BOARD NAME	DLPC1438/DLPA2005 REFERENCE BOARD		DESCRIPTION LAYER 2 - GND PLANE			
BOARD NO.	REV	DATE	PRJ#	SH	OF	
2511671	A	30-JUN-2021	TIDL-121032-01	2	17	



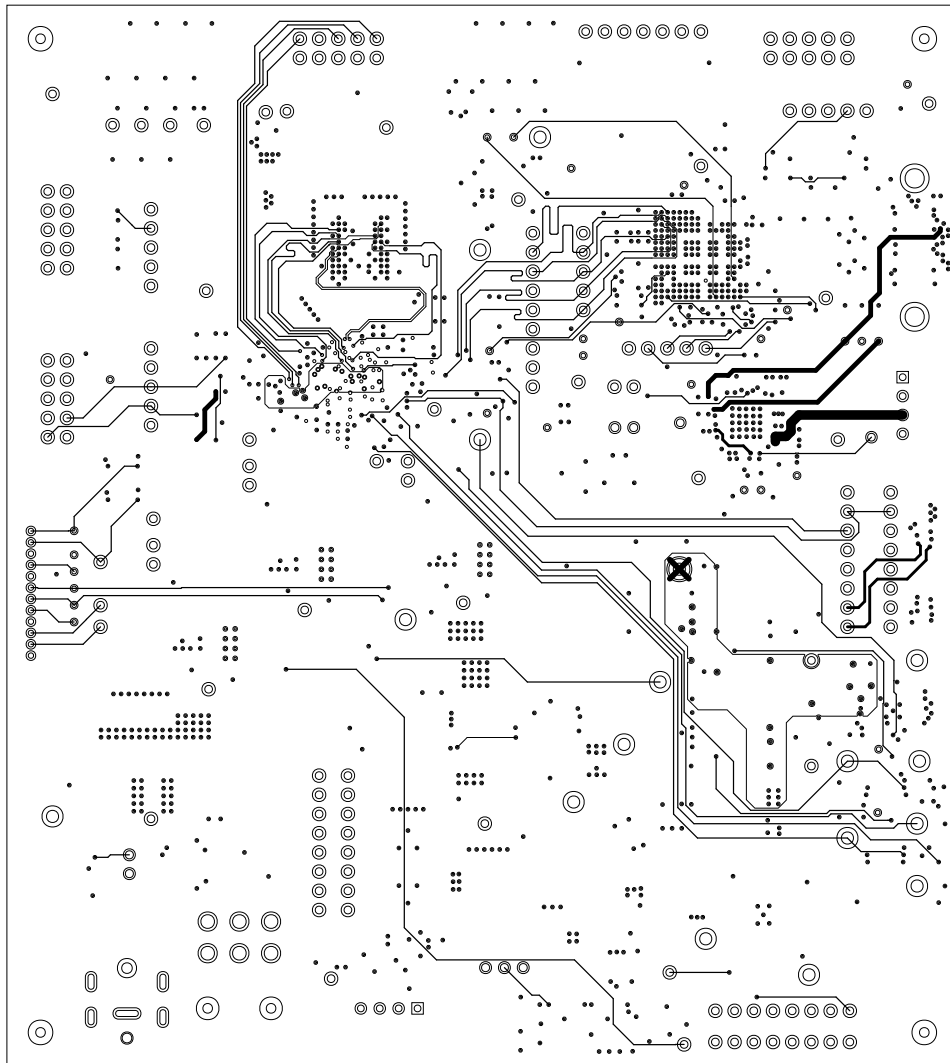
Design, Quick-Turn and Production
 www.qcc.com
 972-931-4100 Fax 972-931-4104



CUSTOMER NAME		TEXAS INSTRUMENTS				
BOARD NAME	DLPC1438/DLPA2005 REFERENCE BOARD		DESCRIPTION			
BOARD NO.	REV	DATE	PRJ#	SH	OF	
2511671	A	30-JUN-2021	TIDL-121032-01	3	17	
				LAYER 3 - SIGNAL		



Design, Quick-Turn and Production
 www.qcc.com
 972-931-4100 Fax 972-931-4104



CUSTOMER NAME		TEXAS INSTRUMENTS				
BOARD NAME	DLPC1438/DLPA2005 REFERENCE BOARD		DESCRIPTION LAYER 4 - SIGNAL			
BOARD NO.	REV	DATE	PRJ#	SH	OF	
2511671	A	30-JUN-2021	TIDL-121032-01	4	17	



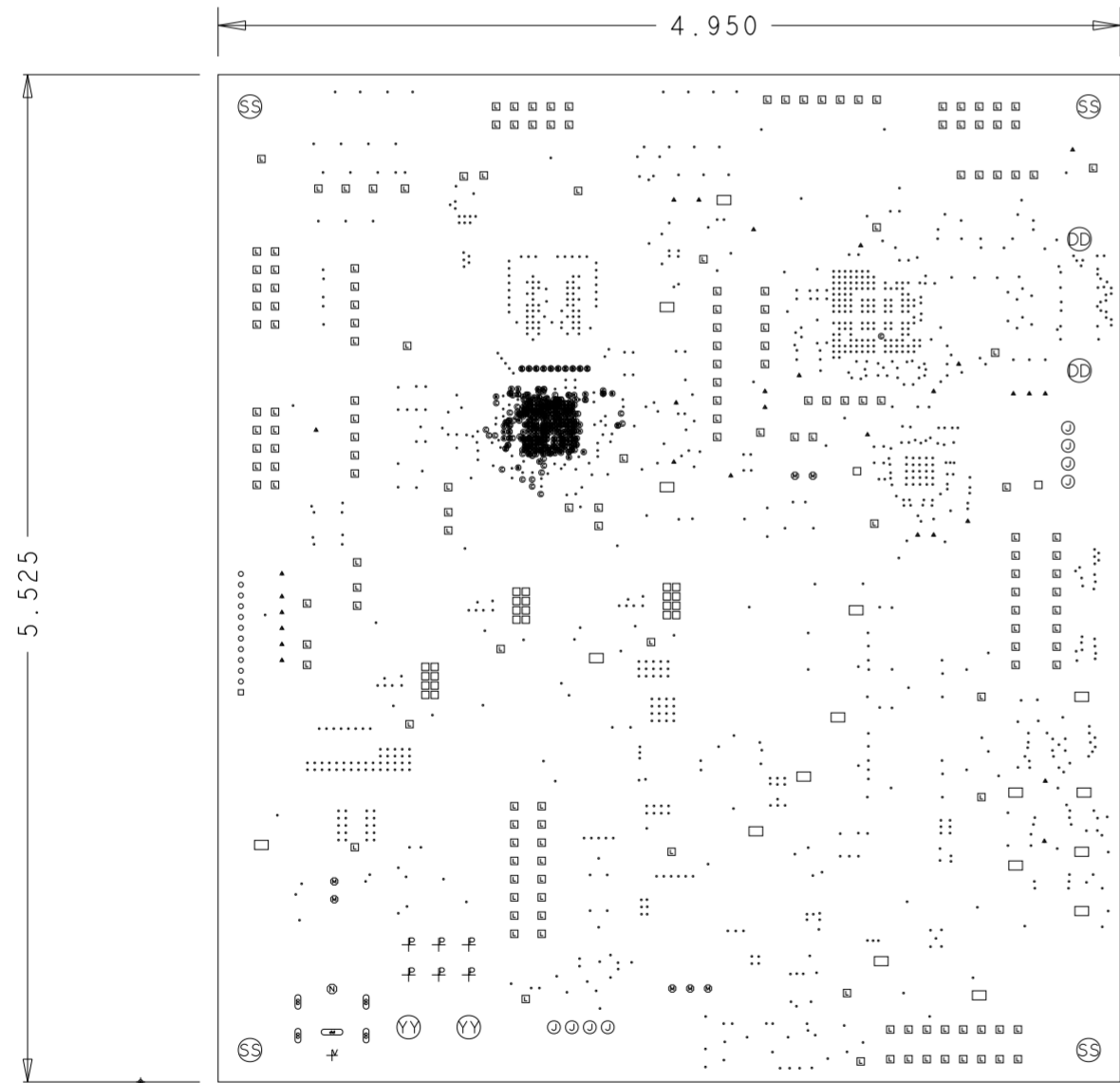
Design, Quick-Turn and Production
 www.qcc.com
 972-931-4100 Fax 972-931-4104

*** 8 MIL TRACES ON LAYER 1 ARE REFERENCED TO LAYER 3.

LAYER	DEFINITION	PREPREG/CORE THICKNESS (MILS)	SINGLE ENDED		DIFFERENTIAL		VIA PLAN								
			STARTING Cu WT.	TRACE WIDTH (MILS)	IMPEDANCE +/-10%	TRACE WIDTH (MILS)	TRACE SPACE (MILS)	IMPEDANCE +/-10%							
	SILKSCREEN														
	SOLDERMASK														
1	SIGNAL		1/4 OZ	5.20	50	3.80	7.20	100							
1				8 ***	65										
PREPREG		3.40													
2	PLANE		1/4 OZ												
PREPREG		3.30													
3	SIGNAL		1/4 OZ	4.50	50										
CORE		8.40													
4	SIGNAL		1/2 OZ	6.50	50	5.0	6.0	100							
PREPREG		5.0													
5	PLANE		1/2 OZ												
CORE		9.20													
6	PLANE		1/2 OZ												
PREPREG		5.0													
7	SIGNAL		1/2 OZ	6.50	50										
CORE		8.40													
8	SIGNAL		1/4 OZ	4.50	50										
PREPREG		3.30													
9	PLANE		1/4 OZ												
PREPREG		3.40													
10	SIGNAL		1/4 OZ	5.20	50	3.80	7.20	100							
	SOLDERMASK														
	SILKSCREEN														

0.062 ± 10%

LAYER STACKUP



PRIMARY SIDE VIEW

CUSTOMER NAME		TEXAS INSTRUMENTS			
BOARD NAME	DLPC1438/DLPA2005 REFERENCE BOARD	DESCRIPTION DRILL DRAWING			
BOARD NO.	2511671	REV	DATE	PRJ#	SH OF
		A	30-JUN-2021	TIDL-121032-01	17 17



FAB NOTES:

- ALL DIMENSIONS ARE IN INCHES, UNLESS OTHERWISE NOTED.
- THE PWB SHALL BE FABRICATED TO IPC-6012, CLASS 2 AND WORKMANSHIP SHALL CONFORM TO IPC-A-600, CLASS 2. CURRENT REVISIONS.
- BOARD MATERIAL SHALL BE 180 Tg/350 Td ISOLA FR-370HR OR EQUIVALENT. ROHS COMPLIANT AND LEAD FREE ASSEMBLY CAPABLE. BOARD MATERIAL SHALL MEET OR EXCEED IPC-4101B. COLOR: NATURAL.
- ALL BOARDS MUST MEET OR EXCEED UL94V-0 REQUIREMENTS. PCB MUST BEAR THE UL94V-0 UL REGISTERED MATERIAL ID NUMBER.
- MINIMUM COPPER WALL THICKNESS OF PLATED-THRU HOLES TO BE .001 INCH, WITH A MINIMUM ANNULAR RING OF .002 INCH.
- OVERALL BOARD THICKNESS TO BE .062 +/- 10% AND APPLIES AFTER ALL LAMINATION AND PLATING PROCESSES, MEASURED FROM COPPER TO COPPER.
- MAX. WARP & TWIST TO BE .0075 INCHES PER INCH.
- BOARD MUST BE ELECTRICALLY TESTED USING SUPPLIED IPC-D-356 NETLIST.
- BOARD SHOP MAY ADJUST LINE WIDTH FOR PROPER IMPEDANCE PLEASE SUPPLY ADJUSTED STACKUP FOR APPROVAL.
- MICRO VIAS MUST BE PLANARIZED PRIOR TO PLATING.
- THRU VIAS IN SMT PADS MUST BE FILLED AND PLANARIZED PRIOR TO PLATING.
- MINIMUM TRACE/SPACE ON THIS DESIGN IS 0.003"/0.003.

PROCESS NOTES:

- PLATE ALL EXPOSED AREAS WITH ELECTROLESS IMMERSION GOLD, NICKEL 150 MICROINCHES THK MIN GOLD 5-15 MICROINCHES THK MIN.
- APPLY LPI SOLDERMASK OVER BARE COPPER (SMOBC). COLOR: GREEN. SOLDERMASK SHALL CONFORM TO IPC-SM-840, CLASS H. CURRENT REV.
- EXCEPT AS NOTED BELOW, SOLDERMASK ARTWORK HAS ZERO (0) OVERSIZED PADS. FABRICATION VENDOR IS ALLOWED TO ADJUST THE COMPONENT SOLDERMASK PADS TO MEET THEIR TOOLING REQUIREMENTS. FABRICATION VENDOR MUST MAINTAIN A MINIMUM WEB OF .0035.
- APPLY LPI SILKSCREEN OR EQUIVALENT PER THE ARTWORK. COLOR: WHITE.

DRILL CHART: TOP to LY2GND				
ALL UNITS ARE IN MILS				
FIGURE	SIZE	TOLERANCE	PLATED	QTY
•	6.0	+3.0/-6.0	PLATED	169

DRILL CHART: LY2GND to LY3				
ALL UNITS ARE IN MILS				
FIGURE	SIZE	TOLERANCE	PLATED	QTY
•	6.0	+3.0/-6.0	PLATED	123

DRILL CHART: LY3 to LY8				
ALL UNITS ARE IN MILS				
FIGURE	SIZE	TOLERANCE	PLATED	QTY
•	6.0	+0.0/-6.0	PLATED	71

DRILL CHART: LY8 to LY9GND				
ALL UNITS ARE IN MILS				
FIGURE	SIZE	TOLERANCE	PLATED	QTY
•	6.0	+3.0/-6.0	PLATED	42

DRILL CHART: LY9GND to BOTTOM				
ALL UNITS ARE IN MILS				
FIGURE	SIZE	TOLERANCE	PLATED	QTY
•	6.0	+3.0/-6.0	PLATED	69

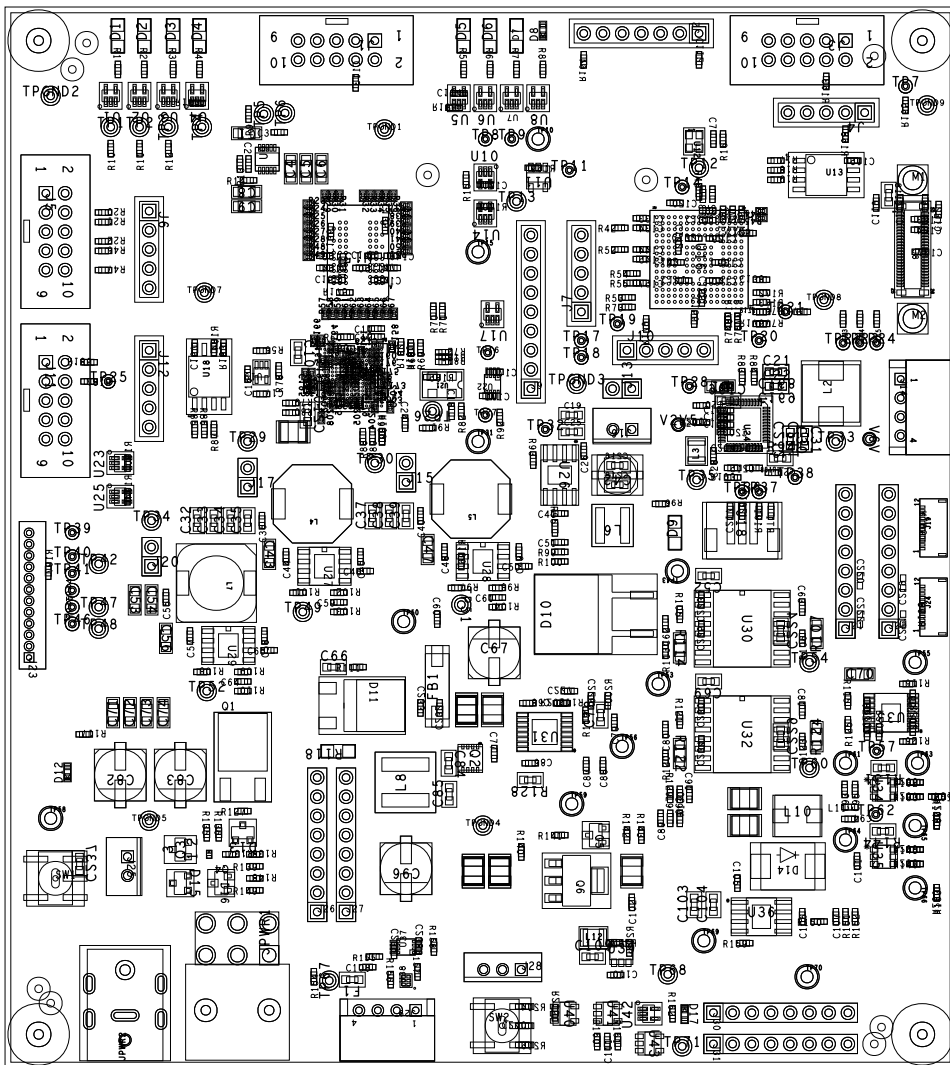
DRILL CHART: TOP to BOTTOM				
ALL UNITS ARE IN MILS				
FIGURE	SIZE	TOLERANCE	PLATED	QTY
•	9.0	+0.0/-9.0	PLATED	1084
□	12.0	+3.0/-12.0	PLATED	24
•	24.0	+3.0/-3.0	PLATED	29
□	28.0	+0.0/-0.0	PLATED	1
•	28.0	+3.0/-3.0	PLATED	11
⊙	35.0	+3.0/-3.0	PLATED	8
□	40.0	+0.0/-0.0	PLATED	2
□	40.0	+3.0/-3.0	PLATED	170
•	42.0	+3.0/-3.0	PLATED	7
⊙	55.0	+3.0/-3.0	PLATED	1
□	63.0	+3.0/-3.0	PLATED	17
⊕	71.0	+3.0/-3.0	PLATED	6
⊙	100.0	+3.0/-3.0	PLATED	2
+	63.386	+2.0/-2.0	NON-PLATED	1
⊙	118.0	+3.0/-3.0	NON-PLATED	2
⊙	128.0	+3.0/-3.0	NON-PLATED	4
⊕	78.74x31.496	+3.0/-3.0	PLATED	4
⊕	118.11x31.496	+3.0/-3.0	PLATED	1



CUSTOMER NAME		TEXAS INSTRUMENTS				
BOARD NAME	DLPC1438/DLPA2005 REFERENCE BOARD	DESCRIPTION SOLDERPASTE - SECONDARY SIDE				
BOARD NO.	2511671	REV	DATE	PRJ#	SH	OF
	A		30-JUN-2021	TIDL-121032-01	16	17



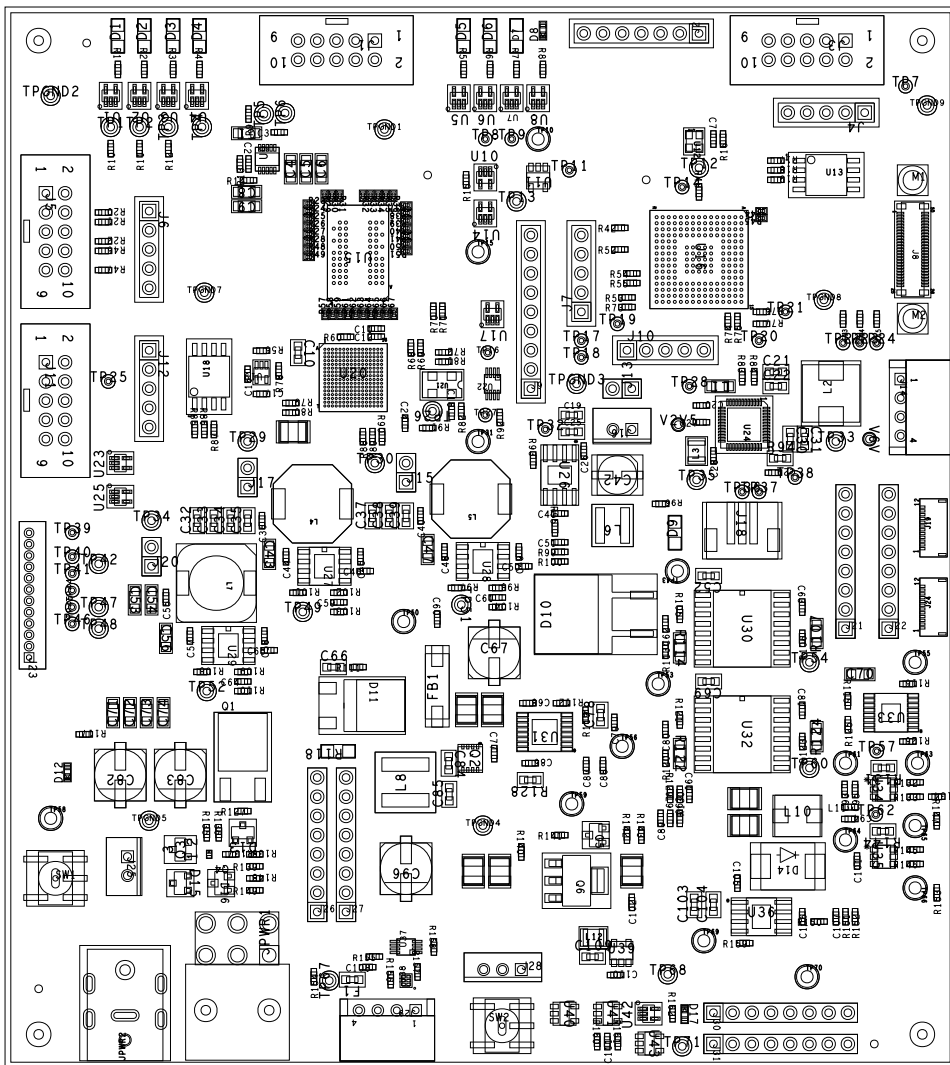
Design, Quick-Turn and Production
 www.qcg.com
 972-931-4100 Fax 972-931-4104



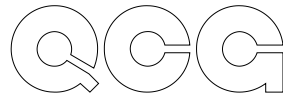
CUSTOMER NAME		TEXAS INSTRUMENTS			
BOARD NAME		DESCRIPTION			
DLPC1438/DLPA2005 REFERENCE BOARD					
BOARD NO.	REV	DATE	PRJ#	SH	OF
2511671	A	30-JUN-2021	TIDL-121032-01		17



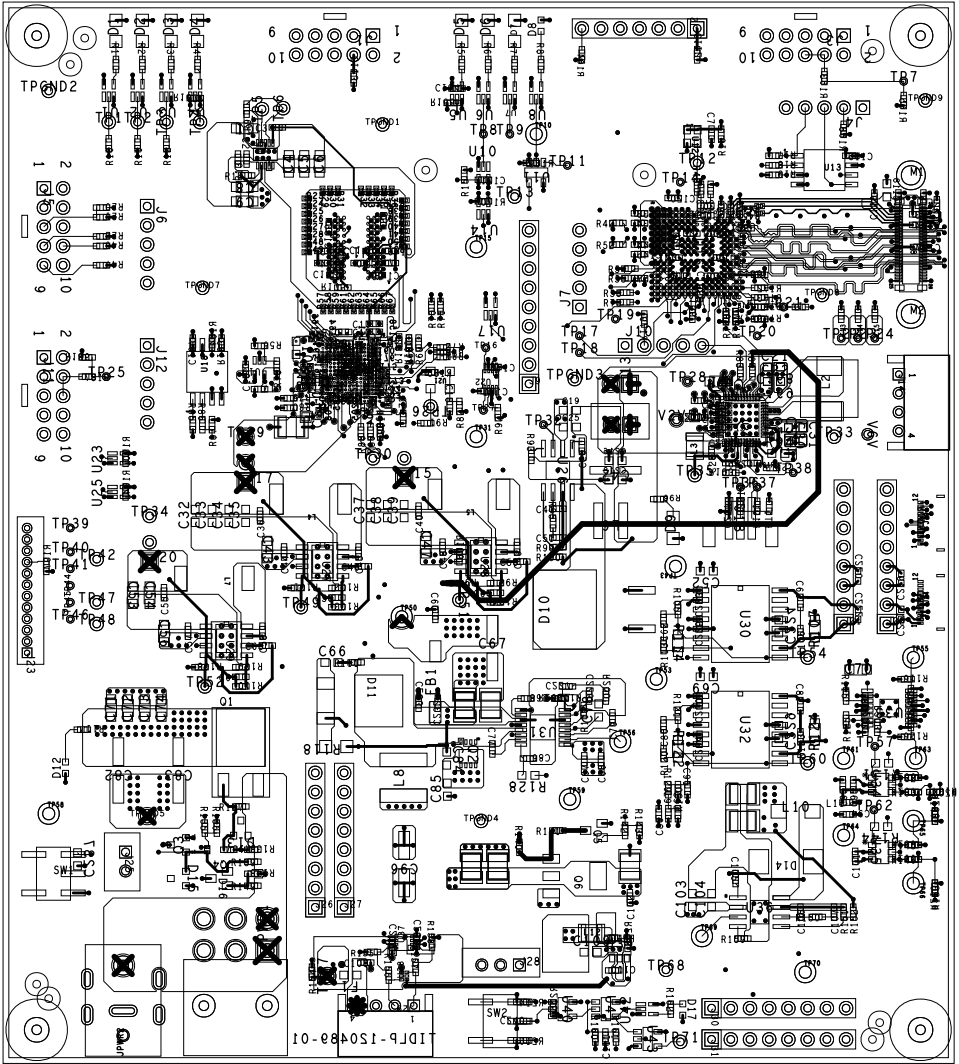
Design, Quick-Turn and Production
 www.qcg.com
 972-931-4100 Fax 972-931-4104



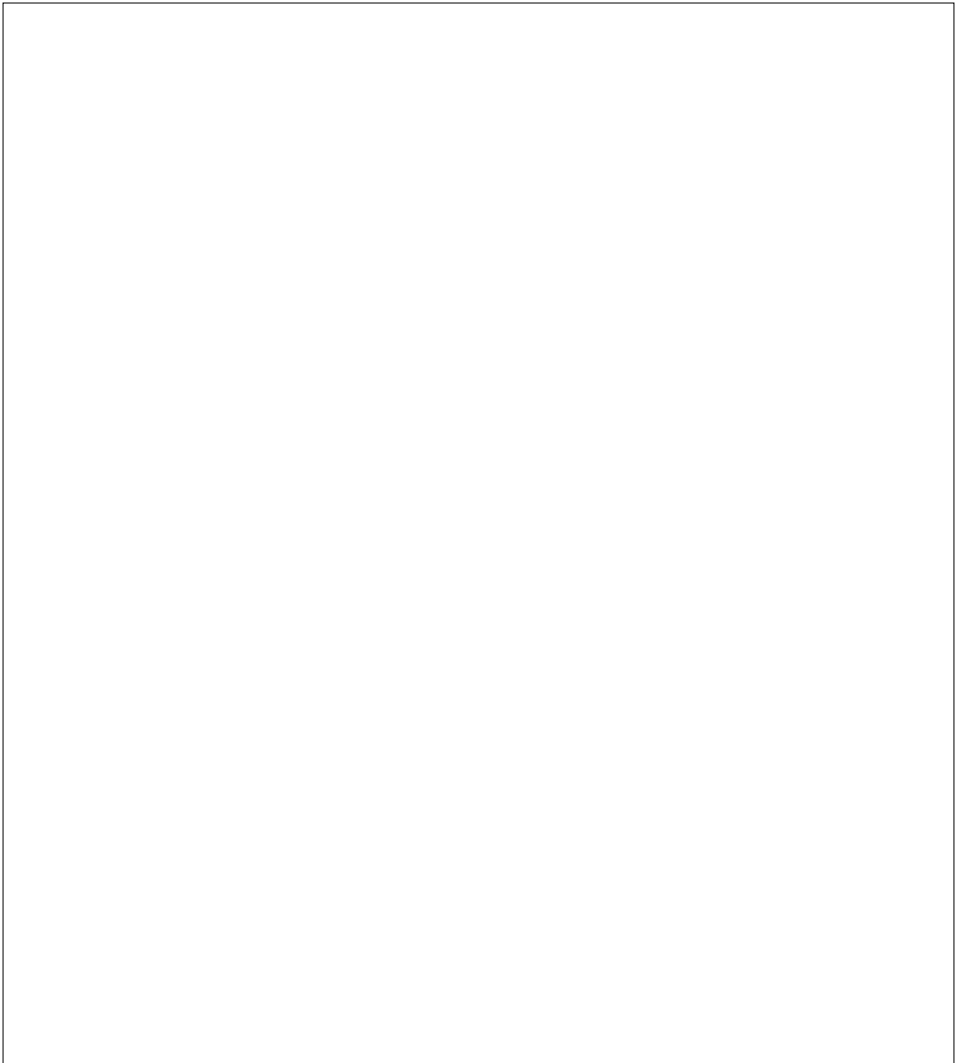
CUSTOMER NAME		TEXAS INSTRUMENTS			
BOARD NAME	DLPC1438/DLPA2005 REFERENCE BOARD		DESCRIPTION		
BOARD NO.	2511671	REV	DATE	PRJ#	SH OF
		A	30-JUN-2021	TIDL-121032-01	17

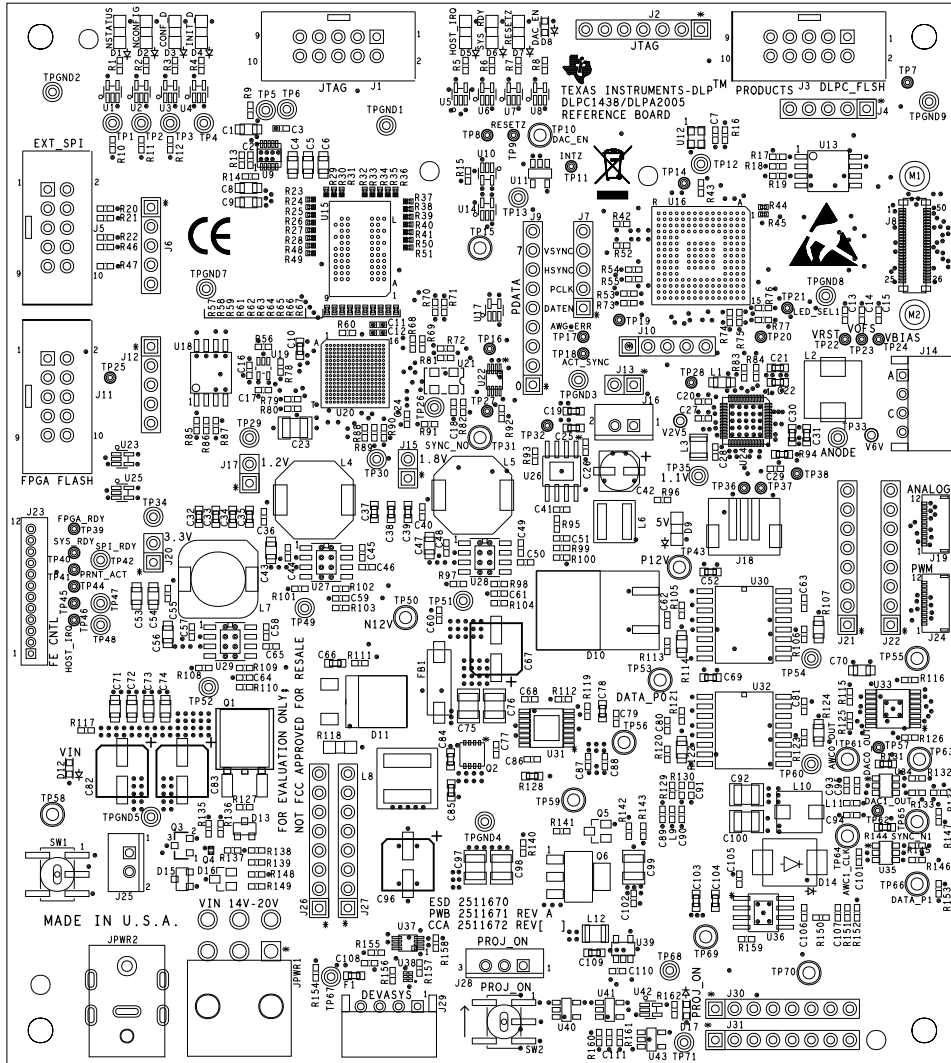


Design, Quick-Turn and Production
 www.qcq.com
 972-931-4100 Fax 972-931-4104



LAYER 1 - INTERMEDIATE SIDE

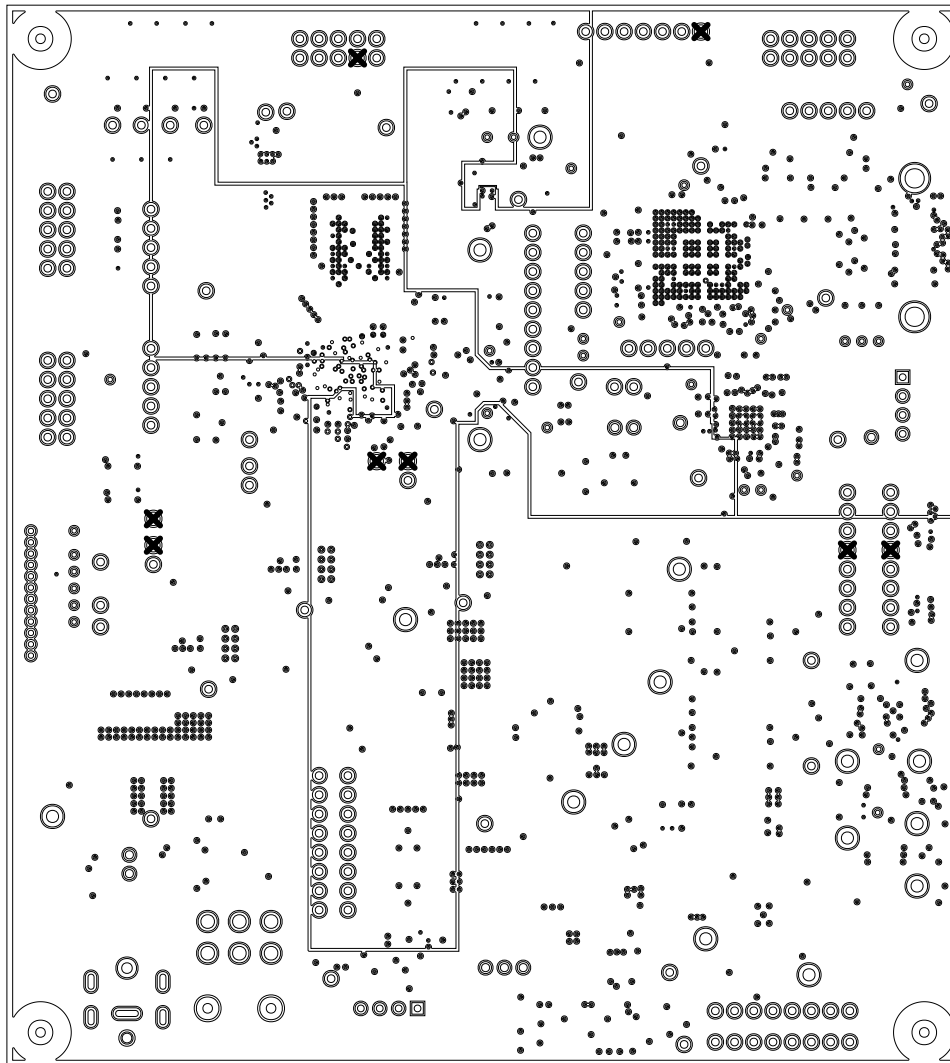




CUSTOMER NAME		TEXAS INSTRUMENTS			
BOARD NAME	DLPC1438/DLPA2005 REFERENCE BOARD	DESCRIPTION SILKSCREEN - PRIMARY SIDE			
BOARD NO.	2511671	REV	A	DATE	30-JUN-2021
		PRJ#	TIDLPC-121032-01	SH	13 OF 17



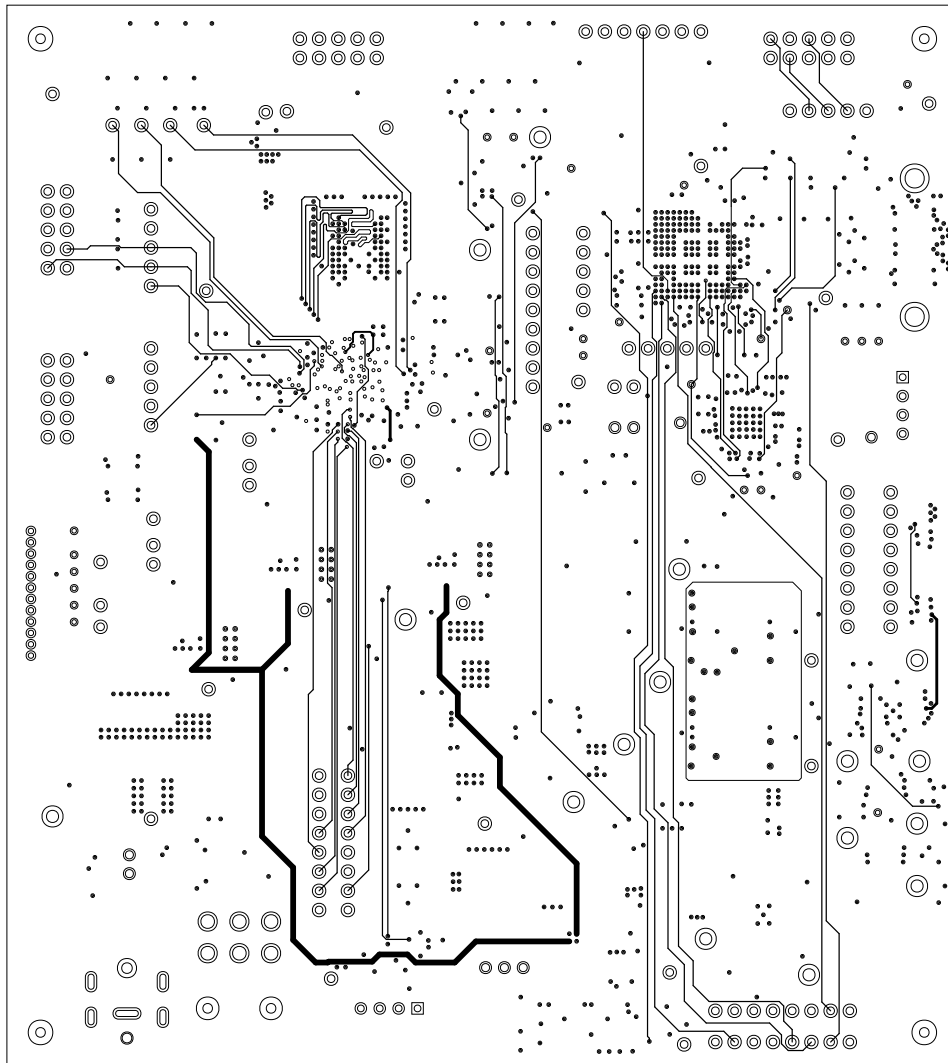
Design, Quick-Turn and Production
 www.qcc.com
 972-931-4100 Fax 972-931-4104



CUSTOMER NAME		TEXAS INSTRUMENTS				
BOARD NAME	DLPC1438/DLPA2005 REFERENCE BOARD	DESCRIPTION LAYER 6 - POWER PLANE				
BOARD NO.	2511671	REV	DATE	PRJ#	SH	OF
		A	30-JUN-2021	TIDL-121032-01	6	17



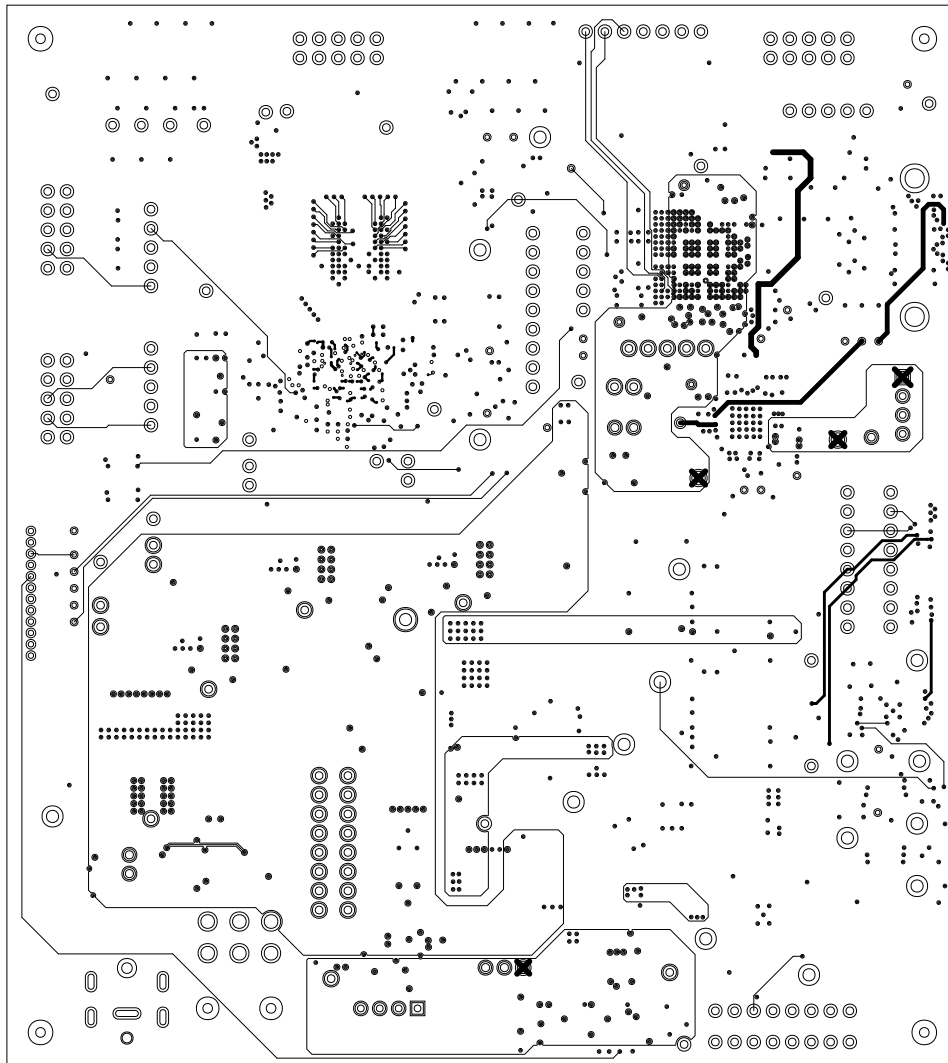
Design, Quick-Turn and Production
 www.qcc.com
 972-931-4100 Fax 972-931-4104



CUSTOMER NAME		TEXAS INSTRUMENTS				
BOARD NAME	DLPC1438/DLPA2005 REFERENCE BOARD		DESCRIPTION LAYER 7 - SIGNAL			
BOARD NO.	REV	DATE	PRJ#	SH	OF	
2511671	A	30-JUN-2021	TIDL-121032-01	7	17	



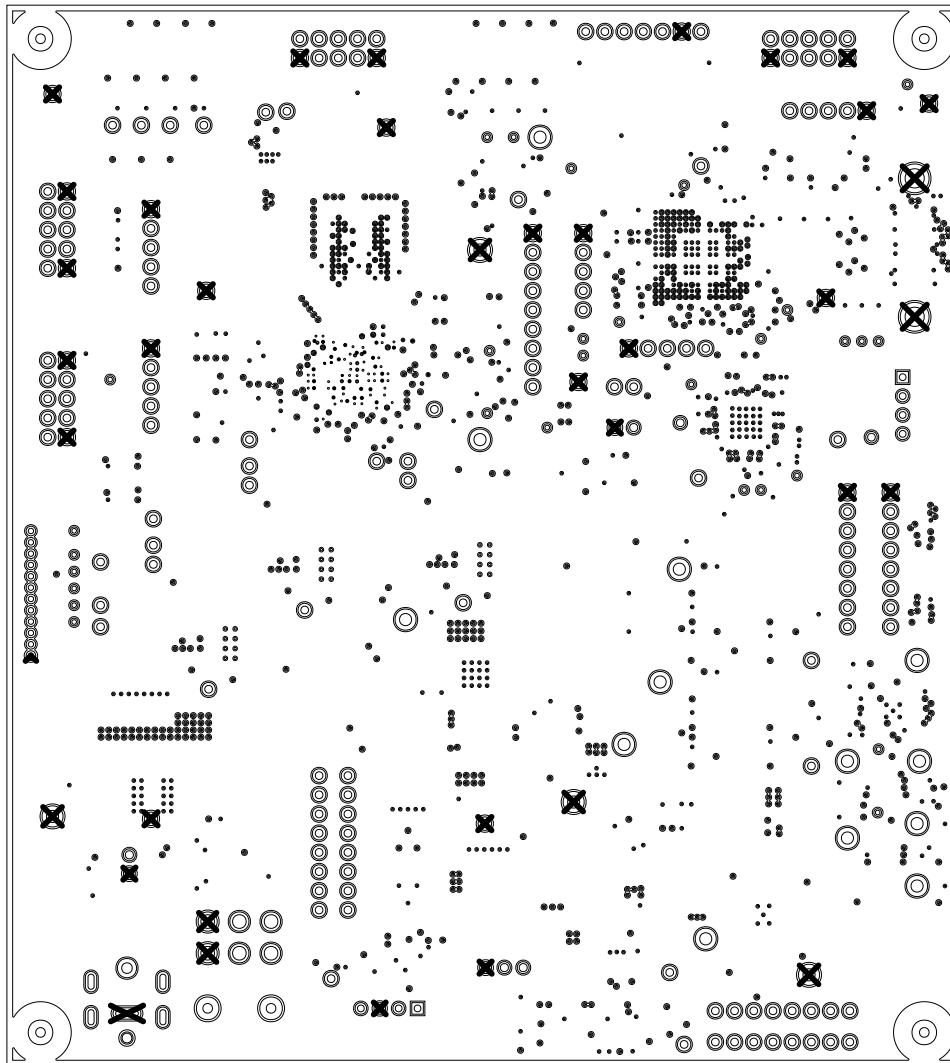
Design, Quick-Turn and Production
 www.qcc.com
 972-931-4100 Fax 972-931-4104



CUSTOMER NAME		TEXAS INSTRUMENTS				
BOARD NAME	DLPC1438/DLPA2005 REFERENCE BOARD		DESCRIPTION			LAYER 8 - SIGNAL
BOARD NO.	REV	DATE	PRJ#	SH	OF	
2511671	A	30-JUN-2021	TIDL-121032-01	8	17	



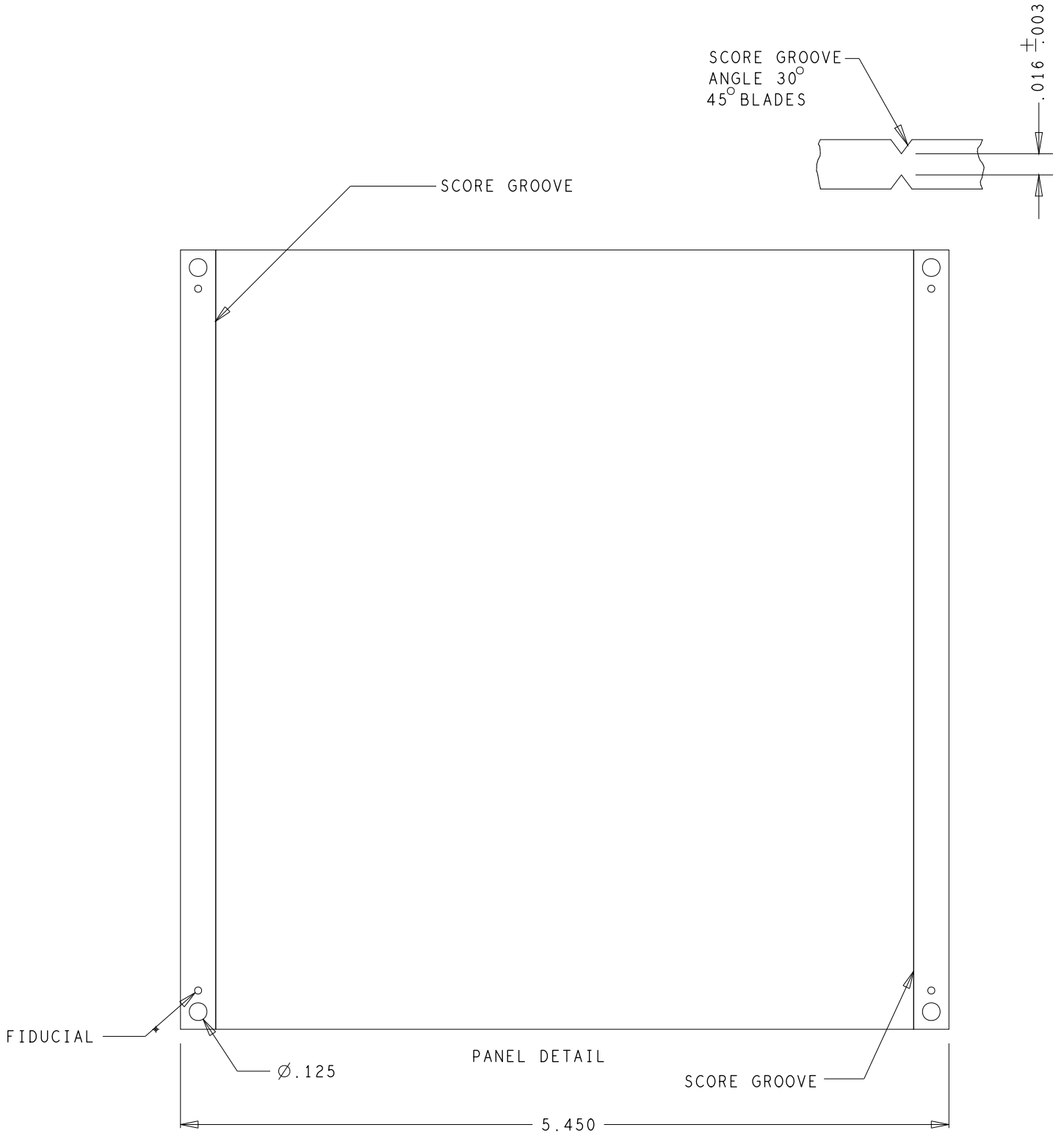
Design, Quick-Turn and Production
 www.qcc.com
 972-931-4100 Fax 972-931-4104

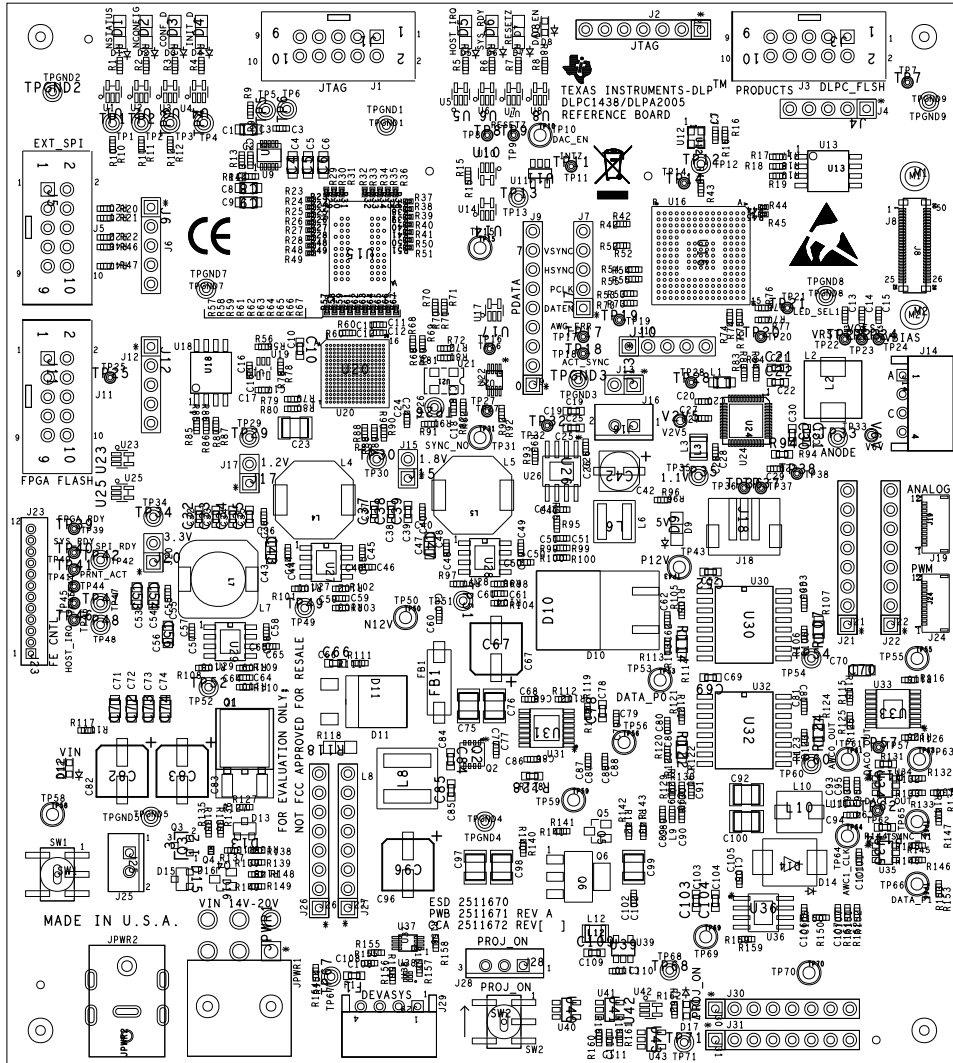


CUSTOMER NAME		TEXAS INSTRUMENTS				
BOARD NAME	DLPC1438/DLPA2005 REFERENCE BOARD		DESCRIPTION			
BOARD NO.	REV	DATE	PRJ#	SH	OF	
2511671	A	30-JUN-2021	TIDL-121032-01	9	17	
				LAYER 9- GND PLANE		



Design, Quick-Turn and Production
 www.qcc.com
 972-931-4100 Fax 972-931-4104





CUSTOMER NAME		TEXAS INSTRUMENTS									
BOARD NAME		DLPC1438/DLPA2005 REFERENCE BOARD		DESCRIPTION SILKSCREEN - PRIMARY SIDE							
BOARD NO.	2511671	REV	A	DATE	30-JUN-2021	PRJ#	TIDLPC-121032-01	SH	13	OF	17



Design, Quick-Turn and Production
 972-931-4100 www.qcc.com
 Fax 972-931-4104

IMPORTANT NOTICE AND DISCLAIMER

TI PROVIDES TECHNICAL AND RELIABILITY DATA (INCLUDING DATA SHEETS), DESIGN RESOURCES (INCLUDING REFERENCE DESIGNS), APPLICATION OR OTHER DESIGN ADVICE, WEB TOOLS, SAFETY INFORMATION, AND OTHER RESOURCES "AS IS" AND WITH ALL FAULTS, AND DISCLAIMS ALL WARRANTIES, EXPRESS AND IMPLIED, INCLUDING WITHOUT LIMITATION ANY IMPLIED WARRANTIES OF MERCHANTABILITY, FITNESS FOR A PARTICULAR PURPOSE OR NON-INFRINGEMENT OF THIRD PARTY INTELLECTUAL PROPERTY RIGHTS.

These resources are intended for skilled developers designing with TI products. You are solely responsible for (1) selecting the appropriate TI products for your application, (2) designing, validating and testing your application, and (3) ensuring your application meets applicable standards, and any other safety, security, regulatory or other requirements.

These resources are subject to change without notice. TI grants you permission to use these resources only for development of an application that uses the TI products described in the resource. Other reproduction and display of these resources is prohibited. No license is granted to any other TI intellectual property right or to any third party intellectual property right. TI disclaims responsibility for, and you will fully indemnify TI and its representatives against, any claims, damages, costs, losses, and liabilities arising out of your use of these resources.

TI's products are provided subject to [TI's Terms of Sale](#) or other applicable terms available either on [ti.com](https://www.ti.com) or provided in conjunction with such TI products. TI's provision of these resources does not expand or otherwise alter TI's applicable warranties or warranty disclaimers for TI products.

TI objects to and rejects any additional or different terms you may have proposed.

Mailing Address: Texas Instruments, Post Office Box 655303, Dallas, Texas 75265
Copyright © 2023, Texas Instruments Incorporated