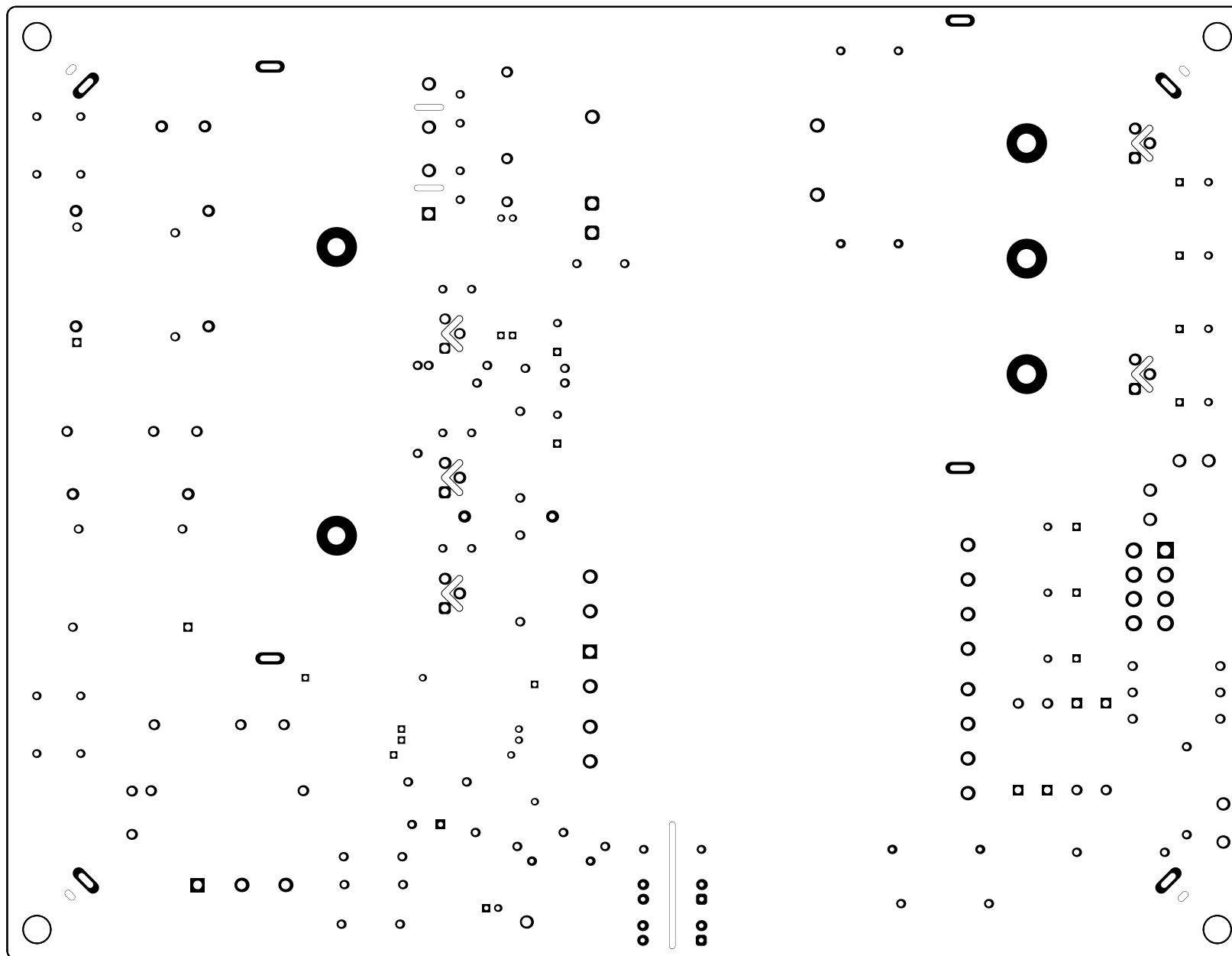
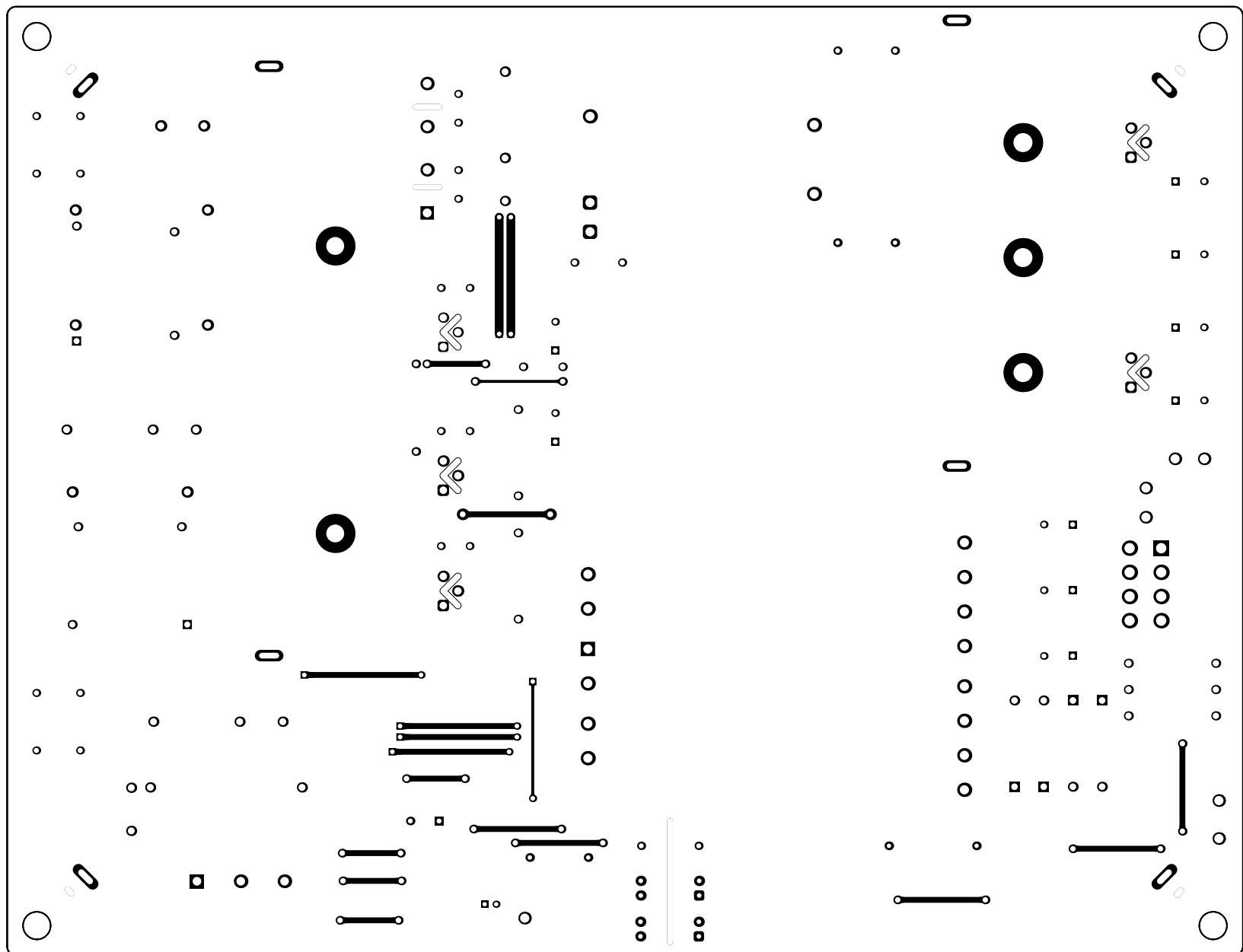


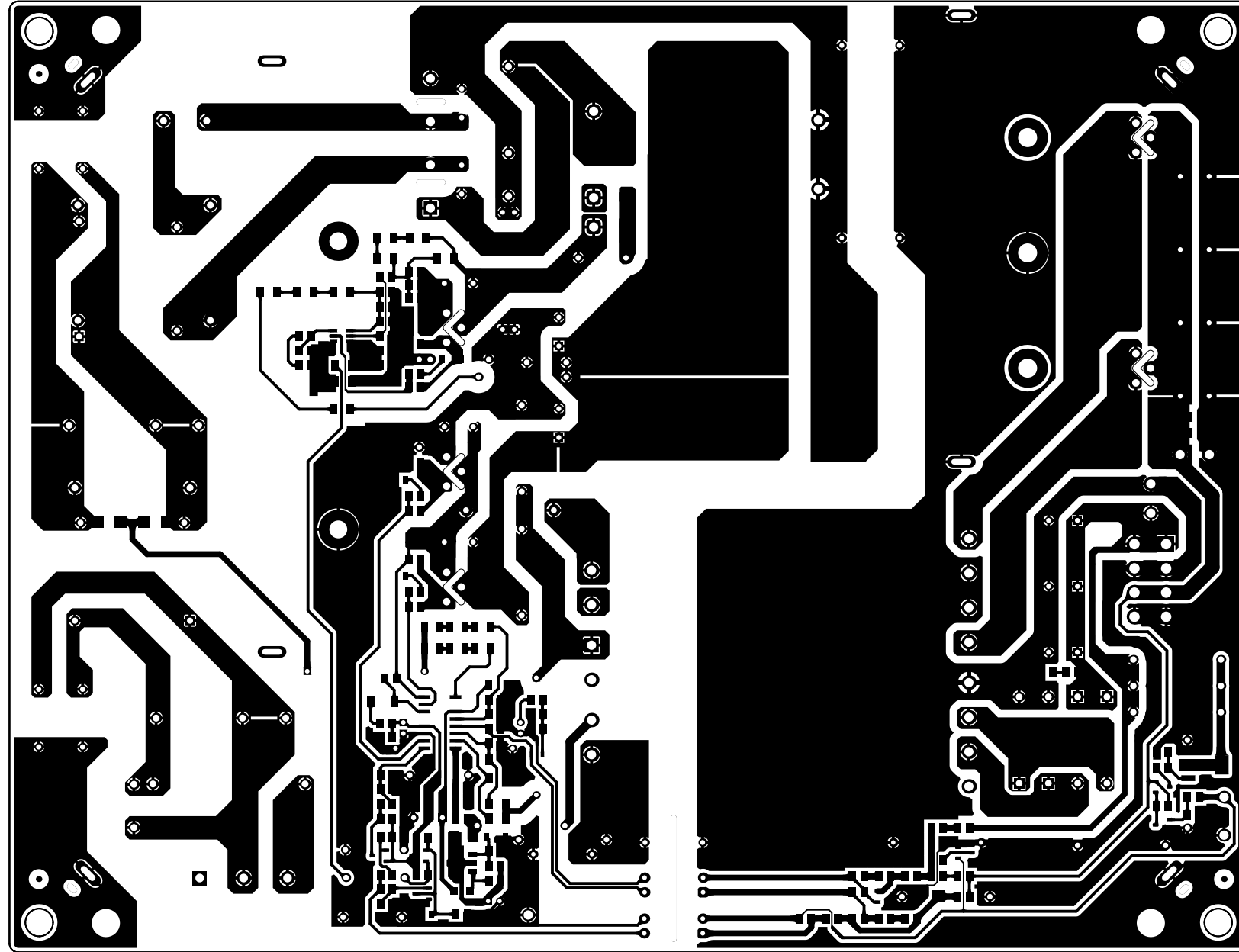
| | | | |
|----------------------------------|----------------------------------|--------|--------------------------------|
| ALL ARTWORK VIEWED FROM TOP SIDE | BOARD #: PMP40580 | REV: A | SUN REV: Not In VersionControl |
| LAYER NAME = Top Overlay | TID #: N/A | | |
| PLOT NAME = Top Overlay | GENERATED : 9/27/2019 2:05:44 PM | | TEXAS INSTRUMENTS |



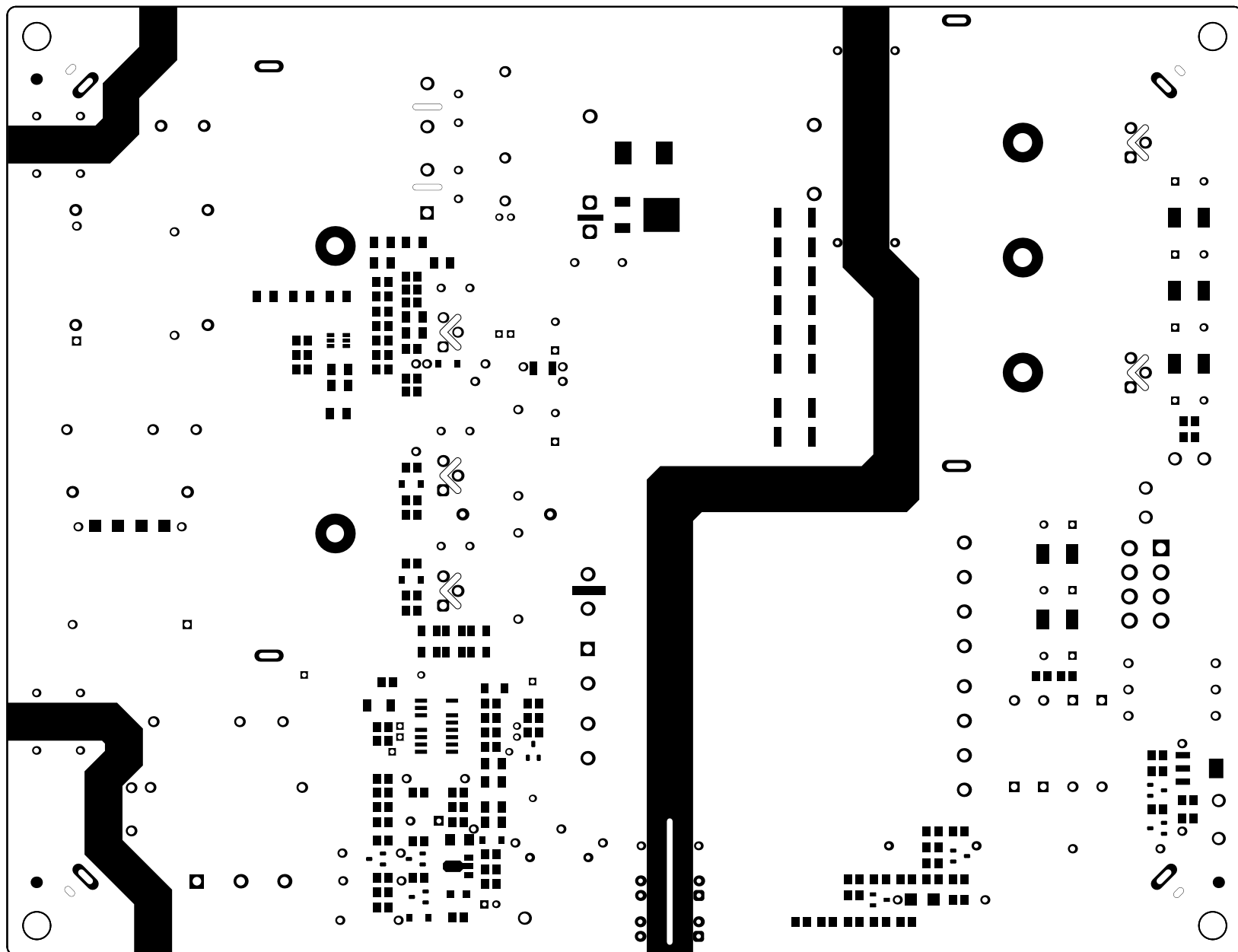
| | | | |
|----------------------------------|----------------------------------|--------|--------------------------------|
| ALL ARTWORK VIEWED FROM TOP SIDE | BOARD #: PMP40580 | REV: A | SUN REV: Not In VersionControl |
| LAYER NAME = Top Solder | TID #: N/A | | |
| PLOT NAME = Top Solder Mask | GENERATED : 9/27/2019 2:05:47 PM | | TEXAS INSTRUMENTS |



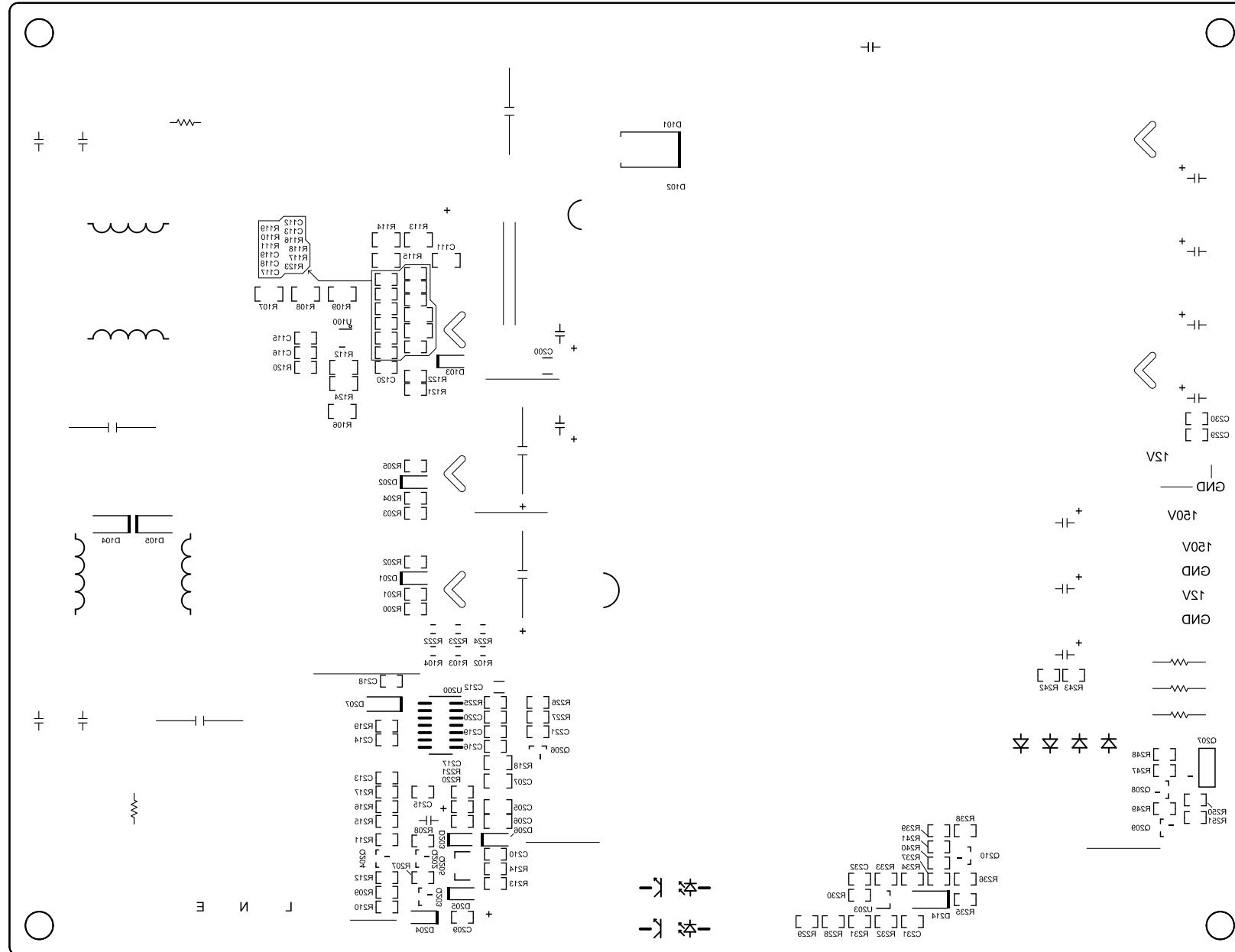
| | | | |
|----------------------------------|----------------------------------|--------|--------------------------------|
| ALL ARTWORK VIEWED FROM TOP SIDE | BOARD #: PMP40580 | REV: A | SUN REV: Not In VersionControl |
| LAYER NAME = Top Layer | TID #: N/A | | |
| PLOT NAME = Top Layer | GENERATED : 9/27/2019 2:05:51 PM | | TEXAS INSTRUMENTS |



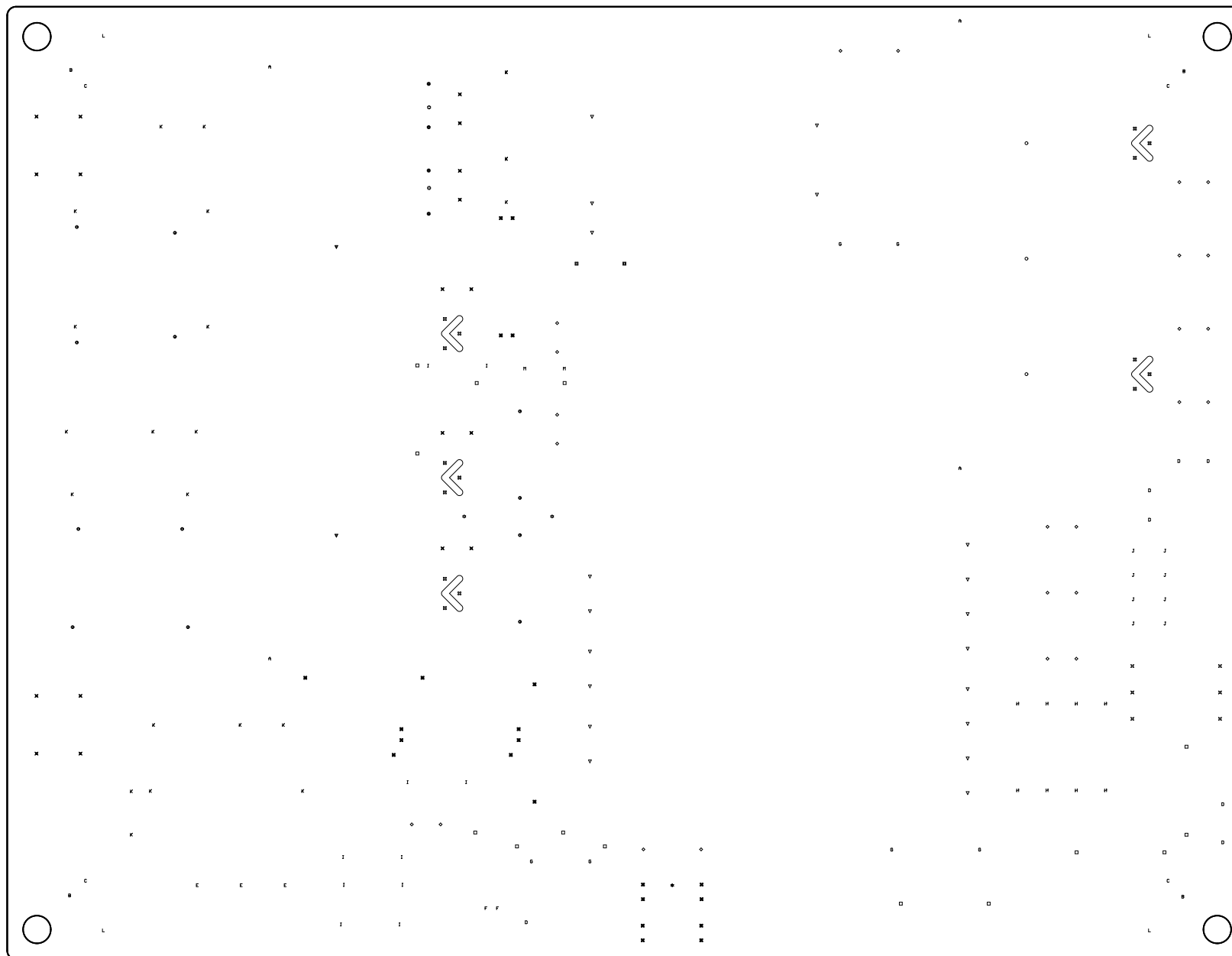
| | | | |
|----------------------------------|----------------------------------|--------|--------------------------------|
| ALL ARTWORK VIEWED FROM TOP SIDE | BOARD #: PMP40580 | REV: A | SUN REV: Not In VersionControl |
| LAYER NAME = Bottom Layer | TID #: N/A | | |
| PLOT NAME = Bottom Layer | GENERATED : 9/27/2019 2:05:54 PM | | TEXAS INSTRUMENTS |



| | | | |
|----------------------------------|----------------------------------|--------|--------------------------------|
| ALL ARTWORK VIEWED FROM TOP SIDE | BOARD #: PMP40580 | REV: A | SUN REV: Not In VersionControl |
| LAYER NAME = Bottom Solder | TID #: N/A | | |
| PLOT NAME = Bottom Solder Mask | GENERATED : 9/27/2019 2:05:56 PM | | TEXAS INSTRUMENTS |



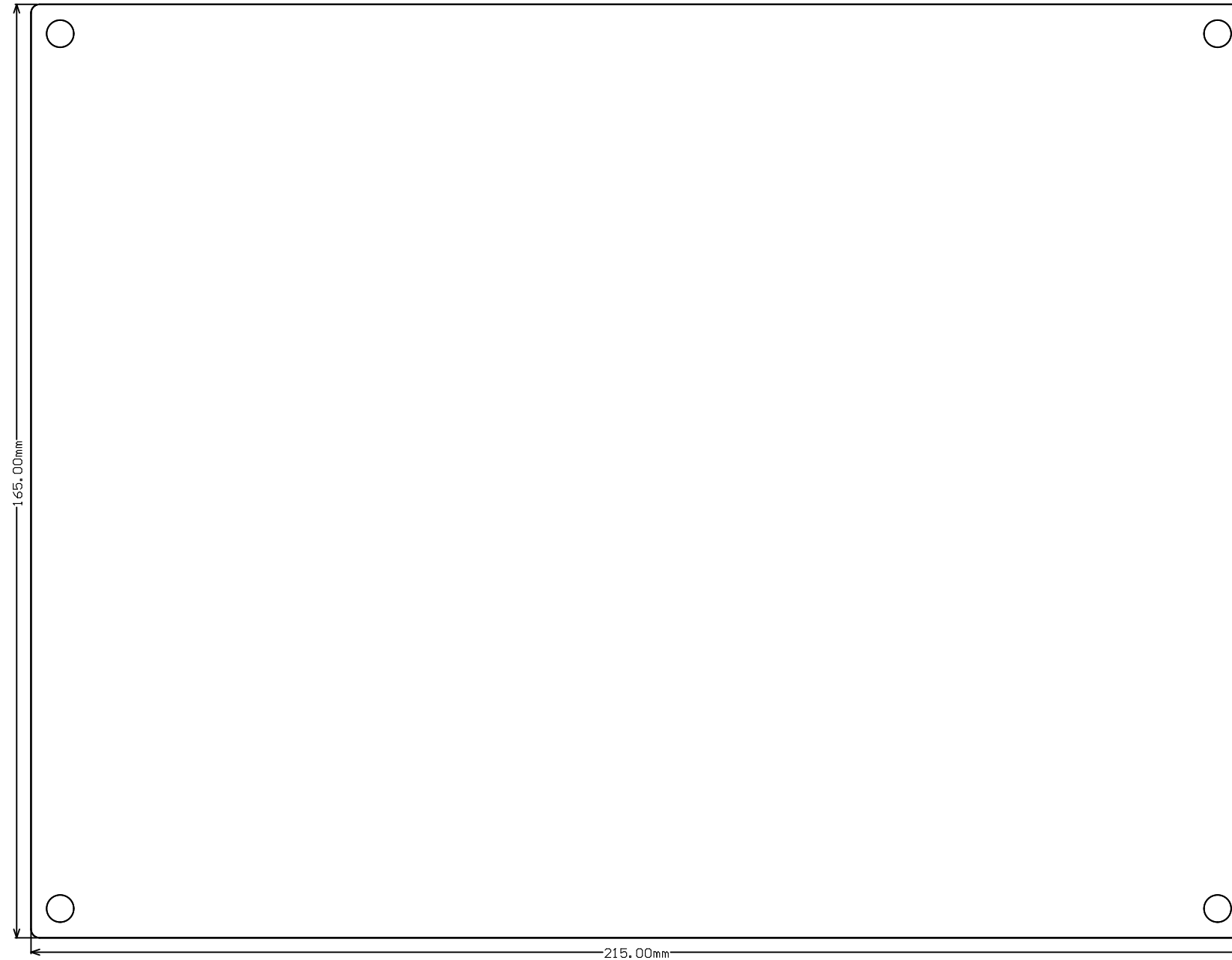
| | | | |
|----------------------------------|----------------------------------|-------------------|--------------------------------|
| ALL ARTWORK VIEWED FROM TOP SIDE | BOARD #: PMP40580 | REV: A | SUN REV: Not In VersionControl |
| LAYER NAME = Bottom Overlay | TID #: N/A | | |
| PLOT NAME = Bottom Overlay | GENERATED : 9/27/2019 2:05:59 PM | TEXAS INSTRUMENTS | |



| Symbol | Quantity | Finished Hole Size | Plated | Hole Type | Drill Layer Pair |
|-----------|----------|---------------------|--------|-----------|--------------------------|
| L | 4 | 141.73mil (3.600mm) | NPTH | Round | Top Layer - Bottom Layer |
| F | 2 | 29.53mil (0.750mm) | PTH | Round | Top Layer - Bottom Layer |
| G | 6 | 30.00mil (0.762mm) | PTH | Round | Top Layer - Bottom Layer |
| X | 22 | 31.50mil (0.800mm) | PTH | Round | Top Layer - Bottom Layer |
| ◇ | 24 | 33.47mil (0.850mm) | PTH | Round | Top Layer - Bottom Layer |
| ⋈ | 18 | 35.43mil (0.900mm) | PTH | Round | Top Layer - Bottom Layer |
| □ | 14 | 37.00mil (0.940mm) | PTH | Round | Top Layer - Bottom Layer |
| ■ | 2 | 37.40mil (0.950mm) | PTH | Round | Top Layer - Bottom Layer |
| I | 10 | 38.00mil (0.965mm) | PTH | Round | Top Layer - Bottom Layer |
| M | 2 | 39.37mil (1.000mm) | PTH | Round | Top Layer - Bottom Layer |
| ⊗ | 2 | 40.00mil (1.016mm) | PTH | Round | Top Layer - Bottom Layer |
| ⊙ | 12 | 41.34mil (1.050mm) | PTH | Round | Top Layer - Bottom Layer |
| ⊗ | 6 | 43.31mil (1.100mm) | PTH | Round | Top Layer - Bottom Layer |
| H | 8 | 45.28mil (1.150mm) | PTH | Round | Top Layer - Bottom Layer |
| K | 23 | 47.24mil (1.200mm) | PTH | Round | Top Layer - Bottom Layer |
| ⊗ | 15 | 51.18mil (1.300mm) | PTH | Round | Top Layer - Bottom Layer |
| E | 3 | 59.06mil (1.500mm) | PTH | Round | Top Layer - Bottom Layer |
| ⊗ | 4 | 61.02mil (1.550mm) | PTH | Round | Top Layer - Bottom Layer |
| ▽ | 19 | 62.99mil (1.600mm) | PTH | Round | Top Layer - Bottom Layer |
| D | 7 | 63.00mil (1.600mm) | PTH | Round | Top Layer - Bottom Layer |
| J | 8 | 70.87mil (1.800mm) | PTH | Round | Top Layer - Bottom Layer |
| ▽ | 2 | 122.05mil (3.100mm) | PTH | Round | Top Layer - Bottom Layer |
| O | 3 | 129.92mil (3.300mm) | PTH | Round | Top Layer - Bottom Layer |
| ⊗ | 2 | 39.37mil (1.000mm) | NPTH | Slot | Top Layer - Bottom Layer |
| ⊗ | 1 | 39.37mil (1.000mm) | NPTH | Slot | Top Layer - Bottom Layer |
| A | 4 | 39.37mil (1.000mm) | PTH | Slot | Top Layer - Bottom Layer |
| B | 4 | 43.31mil (1.100mm) | PTH | Slot | Top Layer - Bottom Layer |
| C | 4 | 43.31mil (1.100mm) | PTH | Slot | Top Layer - Bottom Layer |
| 231 Total | | | | | |

Slot definitions : Routed Path Length = Calculated from tool start centre position to tool end centre position.
Hole Length = Routed Path Length + Tool Size + Slot length as defined in the PCB layout

| | | | |
|----------------------------------|----------------------------------|--------|--------------------------------|
| ALL ARTWORK VIEWED FROM TOP SIDE | BOARD #: PMP40580 | REV: A | SUN REV: Not In VersionControl |
| LAYER NAME = Drill Drawing | TID #: N/A | | |
| PLOT NAME = Drill Drawing | GENERATED : 9/27/2019 2:06:02 PM | | TEXAS INSTRUMENTS |



| | | | |
|----------------------------------|----------------------------------|-------------------|--------------------------------|
| ALL ARTWORK VIEWED FROM TOP SIDE | BOARD #: PMP40580 | REV: A | SUN REV: Not In VersionControl |
| LAYER NAME = M2 Board Dimensions | TID #: N/A | | |
| PLOT NAME = Board Dimensions | GENERATED : 9/27/2019 2:06:07 PM | TEXAS INSTRUMENTS | |

IMPORTANT NOTICE AND DISCLAIMER

TI PROVIDES TECHNICAL AND RELIABILITY DATA (INCLUDING DATASHEETS), DESIGN RESOURCES (INCLUDING REFERENCE DESIGNS), APPLICATION OR OTHER DESIGN ADVICE, WEB TOOLS, SAFETY INFORMATION, AND OTHER RESOURCES "AS IS" AND WITH ALL FAULTS, AND DISCLAIMS ALL WARRANTIES, EXPRESS AND IMPLIED, INCLUDING WITHOUT LIMITATION ANY IMPLIED WARRANTIES OF MERCHANTABILITY, FITNESS FOR A PARTICULAR PURPOSE OR NON-INFRINGEMENT OF THIRD PARTY INTELLECTUAL PROPERTY RIGHTS.

These resources are intended for skilled developers designing with TI products. You are solely responsible for (1) selecting the appropriate TI products for your application, (2) designing, validating and testing your application, and (3) ensuring your application meets applicable standards, and any other safety, security, or other requirements. These resources are subject to change without notice. TI grants you permission to use these resources only for development of an application that uses the TI products described in the resource. Other reproduction and display of these resources is prohibited. No license is granted to any other TI intellectual property right or to any third party intellectual property right. TI disclaims responsibility for, and you will fully indemnify TI and its representatives against, any claims, damages, costs, losses, and liabilities arising out of your use of these resources.

TI's products are provided subject to TI's Terms of Sale (www.ti.com/legal/termsofsale.html) or other applicable terms available either on ti.com or provided in conjunction with such TI products. TI's provision of these resources does not expand or otherwise alter TI's applicable warranties or warranty disclaimers for TI products.

Mailing Address: Texas Instruments, Post Office Box 655303, Dallas, Texas 75265
Copyright © 2020, Texas Instruments Incorporated