

# LDC1312, LDC1314, LDC1612, LDC1614 Sensor Status Monitoring

## Application Report



Literature Number: SNOA959

October 2016

---



---



---

<b>1</b>	<b>Reporting Mechanisms</b> .....	<b>3</b>
1.1	Conversion Output Register Behavior and Available Reports .....	4
1.2	Status Register Behavior and Available Reports .....	4
1.3	Reporting Errors and Status on the INTB Pin .....	6
<b>2</b>	<b>Reporting of Completed Conversions</b> .....	<b>7</b>
2.1	Unread Conversion .....	7
2.2	Data Ready Reporting .....	7
2.3	Reading Data Without Using DRDY or CHx_UNREADCONV .....	7
<b>3</b>	<b>Reporting of Errors and Warnings</b> .....	<b>8</b>
3.1	Frequency Under-Range Errors .....	8
3.2	Frequency Over-Range Errors .....	8
3.3	Watchdog Timeout Errors .....	8
3.4	Amplitude Warnings .....	9
3.5	Zero Count Errors .....	9
<b>4</b>	<b>Summary of Relevant Register Tables</b> .....	<b>10</b>
4.1	Address 0x00, DATA_CH0 (LDC1312) .....	10
4.2	Address 0x18, STATUS .....	10
4.3	Address 0x19, ERROR_CONFIG .....	12
<b>5</b>	<b>Conclusion</b> .....	<b>13</b>

# LDC1312, LDC1314, LDC1612, LDC1614 Sensor Status Monitoring

Ben Kasemsadeh

## ABSTRACT

TI's multichannel inductance-to-digital converters (LDCs) LDC1612, LDC1614, LDC1312 and LDC1314 feature three different methods for reporting conversion status information including errors, warnings, and completed conversion results. Information is available through the data registers, the status registers, and the INTB pin of the device. This application note explains usage and interpretation of the information that the LDC reports in detail.

## 1 Reporting Mechanisms

The LDC can detect and report on several device conditions. It provides flexibility in the error reporting mechanism.

Errors can be reported in the following ways:

- by the four MSBs in the conversion output registers DATA\_MSB\_CHx.
- by the STATUS register.
- by asserting the INTB pin.

Summary tables with the DATA\_CHx, STATUS and ERROR\_CONFIG registers are shown in section [Section 4](#) for reference.

[Table 1](#) summarizes which reporting options are available for each error and status condition.

**Table 1. Error and Status Condition Reporting Options**

Condition Reported	DATA_CHx Reporting <a href="#">Section 1.1</a>	Status Register Reporting <a href="#">Section 1.2</a>	INTB Reporting <a href="#">Section 1.3</a>
Data ready (DRDY) <a href="#">Section 2.2</a>	N/A	Reported	Set DRDY_2INT=1
Unread conversion <a href="#">Section 2.1</a>	N/A	Reported	N/A
Under-range error <a href="#">Section 3.1</a>	Set UR_ERR2OUT=1	Reported	Set UR_ERR2INT=1
Over-range error <a href="#">Section 3.2</a>	Set OR_ERR2OUT=1	Reported	Set OR_ERR2INT=1
Watchdog timeout error <a href="#">Section 3.3</a>	Set WD_ERR2OUT=1	Reported	Set WD_ERR2INT=1
Amplitude high error <a href="#">Section 3.4</a>	Set AH_ERR2OUT=1 <sup>(1)</sup>	Reported	Set AH_ERR2INT=1
Amplitude low warning <a href="#">Section 3.4</a>	Set AL_ERR2OUT=1 <sup>(1)</sup>	Reported	Set AL_ERR2INT=1
Zero count error <a href="#">Section 3.5</a>	N/A	Reported	Set ZC_ERR2INT=1

<sup>(1)</sup> If both ERROR\_CONFIG.AH\_ERR2OUT=1 and AL\_ERR2OUT=1, the amplitude warning bit in CHx\_ERR\_AE will report a logic OR of the amplitude warnings.

## 1.1 Conversion Output Register Behavior and Available Reports

This reporting method supports the following functions:

- Under-range errors
- Over-range errors
- Watchdog timeout errors
- Amplitude warnings

Any error bit set in the DATA\_CHx register will be cleared by reading DATA\_CHx. If that channel bit caused the error or warning bit in STATUS to be set and INTB to be asserted, then the STATUS error bit is cleared.

The error bits set in the DATA\_CHx register are not sticky. An error or warning bit will be cleared if the subsequent conversion of the corresponding channel completes without the particular condition.

If both ERROR\_CONFIG.AH\_ERR2OUT=1 and AL\_ERR2OUT=1, the amplitude warning bit in CHx\_ERR\_AE will report a logic OR of the amplitude warnings.

Table 2 shows the output of the DATA\_CHx register for each error and status condition.

**Table 2. Error and Status Condition Reporting Through the Output Data Register**

Condition Reported	DATA_CHx Reporting	DATA_CHx Output <sup>(1) (2)</sup>
Data ready (DRDY)	N/A	0x0XXX <sup>(3)</sup>
Unread conversion	N/A	0x0XXX <sup>(3)</sup>
Under-range error	Set UR_ERR2OUT=1	0x8000
Over-range error	Set OR_ERR2OUT=1	0x4FFF
Watchdog timeout error	Set WD_ERR2OUT=1	0x2000
Amplitude high error	Set AH_ERR2OUT=1 <sup>(4)</sup>	0x1XXX <sup>(4)</sup>
Amplitude low warning	Set AL_ERR2OUT=1 <sup>(4)</sup>	0x1XXX <sup>(4)</sup>
Zero count error	N/A	0x0000 or 0x8000

<sup>(1)</sup> This table uses the LDC1312 DATA\_CHx register as an example. Refer to the [LDC161x datasheet](#) for the listing of the equivalent DATA\_CHx\_MSB and DATA\_CHx\_LSB registers.

<sup>(2)</sup> Assuming only the indicated error occurs. If multiple error flags occur, then the leading four bits may be different

<sup>(3)</sup> If both ERROR\_CONFIG.AH\_ERR2OUT=1 and AL\_ERR2OUT=1, the amplitude warning bit in CHx\_ERR\_AE will report a logic OR of the amplitude warnings.

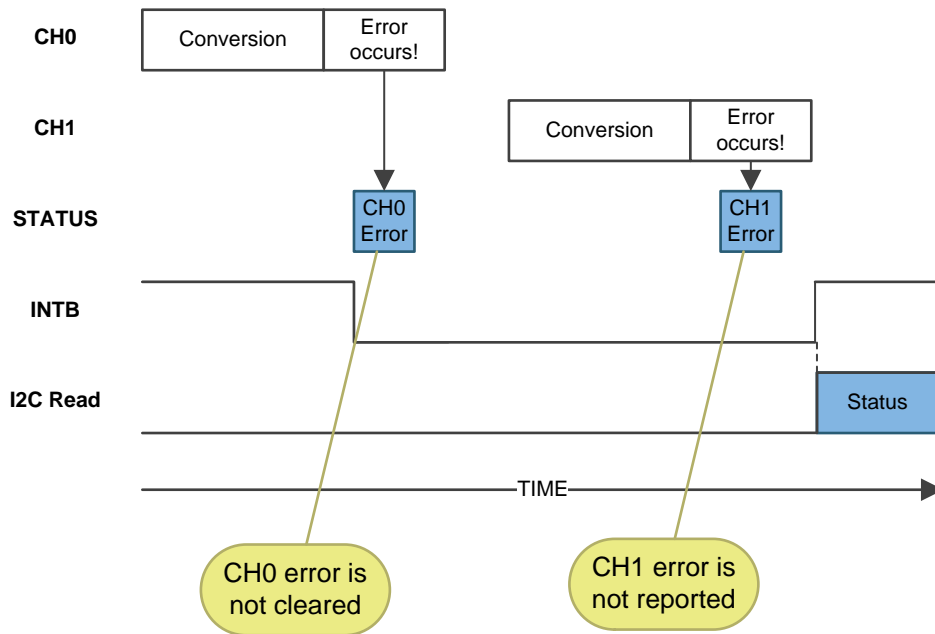
<sup>(4)</sup> Valid conversion data exists in DATAx

## 1.2 Status Register Behavior and Available Reports

This reporting method supports the following functions:

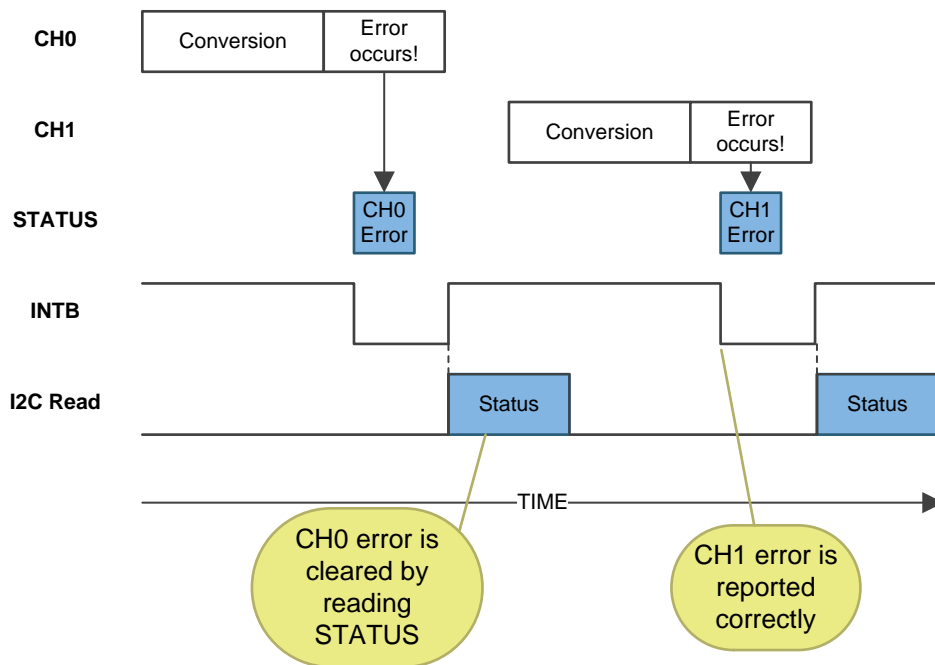
- Under-range errors
- Over-range errors
- Watchdog timeout errors
- Amplitude high errors
- Amplitude low warnings
- Zero count errors
- Data ready (DRDY)
- Unread conversion notification

The STATUS.ERR\_CHAN records the channel that reported the error. If more than one channel reported an error, the ERR\_CHAN bit reports the first channel in which the error occurred. If errors from multiple channels occur while using this technique, subsequent errors will not be reported, as shown in [Figure 1](#).



**Figure 1. CH0 Error is Not Cleared; Subsequent Error is Not Reported**

To avoid missing errors from multiple channels, it is recommended to use INTB reporting in addition to status reporting. This way, INTB will assert when an error occurs, the user can read it, and then INTB will report again if another error occurs, as shown in [Figure 2](#).



**Figure 2. CH0 Error is Cleared; Subsequent Error is Reported Correctly**

All bits in the STATUS register except for the Unread Conversion notification are sticky. The bits need to be cleared by reading the STATUS register. Reading from the STATUS register also de-asserts INTB.

### 1.3 Reporting Errors and Status on the INTB Pin

Error and status registers can trigger an interrupt on the INTB pin. The following conditions must be met:

1. The error or status register must be unmasked by enabling the appropriate register bit in the ERROR\_CONFIG register
2. The INTB function must be enabled by setting CONFIG.INTB\_DIS to 0

Reporting through the INTB pin supports the following functions:

- Under-range errors
- Over-range errors
- Watchdog timeout errors
- Amplitude high errors
- Amplitude low warnings
- Zero count errors
- Data ready (DRDY)

Interrupts are cleared by the following events:

1. Entering Sleep Mode
2. Power-on reset (POR)
3. Device enters Shutdown Mode (SD is asserted)
4. Software reset
5. I2C read of the STATUS register: Reading the STATUS register will clear any error status bit set in STATUS along with the ERR\_CHAN field and de-assert INTB

Setting register CONFIG.INTB\_DIS to b1 disables the INTB function and holds the INTB pin high.

## 2 Reporting of Completed Conversions

### 2.1 Unread Conversion

The LDC reports when a conversion has completed and the conversion result is available and can be read from the DATA\_CHx registers. The status register bit STATUS.CHx\_UNREADCONV shows when a conversion has occurred on a particular channel that has not been read yet. The register is cleared when either the corresponding DATAx register or the Status register is read.

In multi-channel mode, this register can be used to identify a completed conversion result on a particular channel without having to wait until the last conversion in the sequence is complete, as shown in [Figure 3](#).

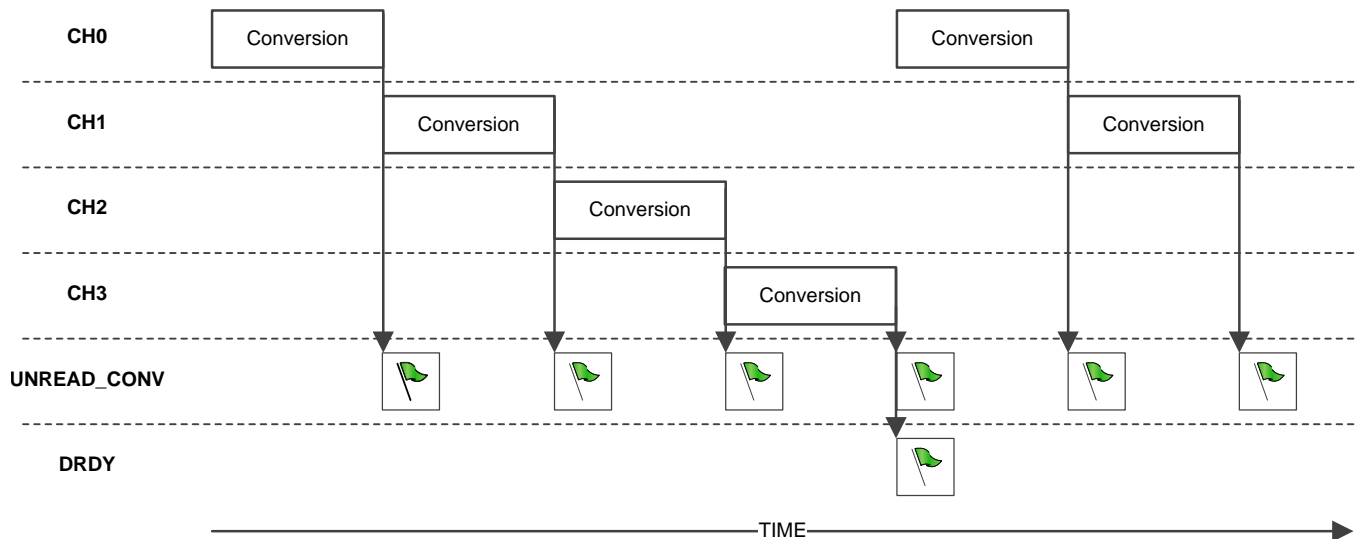


Figure 3. UNREAD\_CONV Flags Completed Conversions Without Waiting Until the End of the Cycle

### 2.2 Data Ready Reporting

When the device is in single-channel continuous conversion mode, which is set by MUX\_CONFIG.AUTOSCAN\_EN = 0, data ready will occur upon the completion of each conversion.

When the device is in multi-channel (sequential) mode, which is set by MUX\_CONFIG.AUTOSCAN\_EN = 1, the data ready will occur on completion of the last conversion in a sequence. For example, if MUX\_CONFIG.RR\_SEQUENCE=0, then data ready will occur when both Channel 0 and Channel 1 conversions are complete.

Data ready is reported:

- in the STATUS.DRDY field if ERROR\_CONFIG.DRDY\_2INT is set to b1.
- by asserting the INTB pin if ERROR\_CONFIG.DRDY\_2INT is set to b1.

Summary tables with the STATUS and ERROR\_CONFIG registers are shown in [section 4](#) for reference.

### 2.3 Reading Data Without Using DRDY or CHx\_UNREADCONV

The deterministic conversion time also allows data polling at a fixed interval instead of using DRDY. As long as the microcontroller and the LDC are clocked from the same clock source, the conversion time can be calculated as shown in [section 'Multi-Channel and Single Channel Operation'](#) in the [LDC161x datasheet](#) and the [LDC131x datasheet](#)

If it is not feasible to share clocks between the LDC and the microcontroller, repeated data reads may occur unless the LDC conversion time is faster than the I2C read operation.

## 3 Reporting of Errors and Warnings

### 3.1 Frequency Under-Range Errors

Frequency Under-range errors occur when the output code (DATA<sub>x</sub>) would be a negative number after subtracting the offset value in the CH<sub>x</sub>\_OFFSET register. If Frequency Under-range errors are occurring on a specific channel, reducing the offset value for the channel applied by the OFFSET\_CH<sub>x</sub> register can resolve them. Under-range errors may also be addressed in some applications by increasing the value in the CH<sub>x</sub>\_RCOUNT.

When a Frequency Under-range error occurs:

- the LDC1312 and LDC1314 report a DATA[11:0] output of 0x000 for the channel which caused the violation.
- the LDC1612 and LDC1614 report a DATA[27:0] output of 0x0000000 for the channel which caused the violation.

Frequency Under-range errors are reported:

- the output register DATA\_CH<sub>x</sub> of the appropriate channel if ERROR\_CONFIG.UR\_ERR2OUT is set to b1.
- in the STATUS.ERR\_UR field (bit 13) if ERROR\_CONFIG.UR\_ERR2INT is set to b1.
- by asserting the INTB pin if ERROR\_CONFIG.UR\_ERR2INT is set to b1.

### 3.2 Frequency Over-Range Errors

Frequency Over-range errors occur when the sensor frequency exceeds the reference frequency. When a Frequency Over-range error occurs on a channel, the output code for the channel will be limited full-scale. If Frequency Over-range errors are occurring on a specific channel, increasing the reference frequency or decreasing the sensor frequency will resolve this issue. Frequency Over-range errors can also be addressed by increasing specific channel's sensor divider in CLOCK\_DIVIDERS\_CH<sub>x</sub>.CH<sub>x</sub>\_FIN\_DIVIDER or by decreasing the specific channel's reference divider setting in CLOCK\_DIVIDERS\_CH<sub>x</sub>.CH<sub>x</sub>\_FREF\_DIVIDER.

When a Frequency Over-range error occurs:

- the LDC1312 and LDC1314 report a DATA[11:0] output of 0xFF for the channel which caused the violation.
- the LDC1612 and LDC1614 report a DATA[27:0] output of 0xFFFFFFFF for the channel which caused the violation.

Frequency Over-range errors are reported:

- in the output register DATA\_CH<sub>x</sub> of the appropriate channel if ERROR\_CONFIG.OR\_ERR2OUT is set to b1.
- in the STATUS.ERR\_OR field (bit 12) if ERROR\_CONFIG.OR\_ERR2INT is set to b1.
- by asserting the INTB pin if ERROR\_CONFIG.OR\_ERR2INT is set to b1.

### 3.3 Watchdog Timeout Errors

Watchdog Timeout errors occur in continuous conversion mode when the sensor is no longer oscillating, or if it is oscillating at a frequency lower than 250Hz. If a Watchdog timeout occurs, the sensor is reset. The LDC will abort the current conversion, and attempt to restart the sensor on the active channel. If the sensor resumes oscillation, then the data conversion will resume, and INTB will be de-asserted (if reporting Watchdog errors is enabled in ERROR\_CONFIG.WD\_ERR2INT). If the sensor does not restart, the LDC will issue repeated Watchdog timeout errors.

If a watchdog event occurs, the data read from DATA registers is invalid and must be ignored.

The sensor recovery time which is controlled by the watchdog is approximately 5.2ms – the LDC requires that the sensor generate at least one oscillation in that time. If the conversion time is less than 5.2ms, then one or many Zero Count errors will be generated before the Watchdog timeout error.



Watchdog Timeout errors are reported:

- in the output register DATA\_CHx of the appropriate channel if ERROR\_CONFIG.WD\_ERR2OUT is set to b1.
- in the STATUS.ERR\_WD field (bit 11) if ERROR\_CONFIG.WD\_ERR2INT is set to b1.
- by asserting the INTB pin if ERROR\_CONFIG.WD\_ERR2INT is set to b1.

Watchdog timeout errors only occur in continuous mode. In sequential mode, zero-count errors and amplitude warnings should be used to detect a stopped oscillation instead.

### 3.4 Amplitude Warnings

Amplitude warnings occur when the sensor amplitude is not within the required range when the conversion begins. There are two types of amplitude warnings - a low amplitude warning and a high amplitude error. This can be caused by an incorrect setting of the channel IDRIVE, or if the sensor impedance is outside of the specified driving range of the LDC.

Refer to the application note [Setting LDC1312/4, LDC1612/4, and LDC1101 Sensor Drive Configuration](#) for information on configuring the sensor oscillation amplitude correctly and avoiding Amplitude warnings.

The reporting of amplitude warnings is more useful during the development of a system rather than during the normal operation. However, in certain circumstances, an amplitude warning may indicate that a hardware fault with the sensor occurred, such as a physically disconnected sensor capacitor.

Amplitude High Errors are reported:

- in the output register DATA\_CHx of the appropriate channel if ERROR\_CONFIG.AH\_ERR2OUT is set to b1. Amplitude Low Warning and Amplitude High Errors are OR-ed together in this register bit.
- in the STATUS.ERR\_AHE field (bit 10) if ERROR\_CONFIG.AH\_ERR\_2INT is set to b1.
- by asserting the INTB pin if ERROR\_CONFIG.AH\_ERR2INT is set to b1 .

Amplitude Low Warnings are reported:

- in the output register DATA\_CHx of the appropriate channel if ERROR\_CONFIG.AL\_ERR2OUT is set to b1. Amplitude Low Warnings and Amplitude High Errors are OR-ed together in this register bit.
- in the STATUS.ERR\_ALE field (bit 9) if ERROR\_CONFIG.AL\_ERR\_2INT is set to b1.
- by asserting the INTB pin if ERROR\_CONFIG.AL\_ERR2INT is set to b1.

### 3.5 Zero Count Errors

A Zero Count error occurs when no oscillations are recorded for either the sensor channel or on the reference input. A Zero Count error can indicate that the sensor has stopped oscillating or the external clock input has stopped. A Zero Count error can also occur if:

1. The conversion time is less than one oscillation period of the sensor. Increase the value of CHx\_RCOUNT or increase the reference clock divider (CLOCK\_DIVIDERS\_CHx.CHx.FREF.DIVIDER); note that this will reduce the sample rate.
2. The channel input divider is too large. Reduce the value of CLOCK\_DIVIDERS\_CHx.CHx.FIN\_DIVIDER.
3. The sensor resonant frequency is too low for the desired measurement. Increase the sensor frequency to address this issue.

Zero Count Errors are reported:

- in the STATUS.ERR\_ZC field (bit 8) if the ERROR\_CONFIG.ZC\_ERR2INT field is set to b1.
- by asserting the INTB pin if the ERROR\_CONFIG.ZC\_ERR2INT field is set to b1.

## 4 Summary of Relevant Register Tables

### 4.1 Address 0x00, DATA\_CH0 (LDC1312)

The following table uses the LDC1312 DATA\_CH0 register as an example. Refer to the [LDC161x datasheet](#) and the [LDC131x datasheet](#) for a complete listing of the DATA registers of the appropriate LDC device.

**Figure 4. Address 0x00, DATA\_CH0**

15	14	13	12	11	10	9	8
CH0_ERR_UR	CH0_ERR_OR	CH0_ERR_WD	CH0_ERR_AE	DATA0[11:0]			
7	6	5	4	3	2	1	0
DATA0[11:0]							

LEGEND: R/W = Read/Write; R = Read only; -n = value after reset

**Table 3. Address 0x00, DATA\_CH0 Field Descriptions**

Bit	Field	Type	Reset	Description
15	CH0_ERR_UR	R	0	Channel 0 Conversion Under-range Error Flag. Cleared by reading the bit.
14	CH0_ERR_OR	R	0	Channel 0 Conversion Over-range Error Flag. Cleared by reading the bit.
13	CH0_ERR_WD	R	0	Channel 0 Conversion Watchdog Timeout Error Flag. Cleared by reading the bit.
12	CH0_ERR_AE	R	0	Channel 0 Amplitude Warning. Cleared by reading the bit
11:0	DATA0[11:0]	R	0000 0000 0000	Channel 0 Conversion Result

### 4.2 Address 0x18, STATUS

**Figure 5. Address 0x18, STATUS**

15	14	13	12	11	10	9	8
ERR_CHAN		ERR_UR	ERR_OR	ERR_WD	ERR_AHE	ERR_ALE	ERR_ZC
7	6	5	4	3	2	1	0
RESERVED	DRDY	RESERVED		CH0_UNREA DCONV	CH1_ UNREADCONV	CH2_ UNREADCONV	CH3_ UNREADCONV

LEGEND: R/W = Read/Write; R = Read only; -n = value after reset

**Table 4. Address 0x18, STATUS Field Descriptions**

Bit	Field	Type	Reset	Description
15:14	ERR_CHAN	R	00	Warning or Error Channel Indicates which channel has generated a Warning or Error. Once flagged, any reported warning or error is latched and maintained until either the STATUS register or the DATA_MSB_CHx (LDC161x) or DATA_CHx (LDC131x) register corresponding to the Warning or Error Channel is read. b00: Channel 0 is source of warning or error. b01: Channel 1 is source of warning or error. b10: Channel 2 is source of warning or error (LDC1614 and LDC1314 only). b11: Channel 3 is source of warning or error (LDC1614 and LDC1314 only).

**Table 4. Address 0x18, STATUS Field Descriptions (continued)**

Bit	Field	Type	Reset	Description
13	ERR_UR	R	0	Conversion Under-range Error b0: No Conversion Under-range error was recorded since the last read of the STATUS register. b1: An active channel has generated a Conversion Under-range error. Refer to STATUS.ERR_CHAN field to determine which channel is the source of this error.
12	ERR_OR	R	0	Conversion Over-range Error. b0: No Conversion Over-range error was recorded since the last read of the STATUS register. b1: An active channel has generated a Conversion Over-range error. Refer to STATUS.ERR_CHAN field to determine which channel is the source of this error.
11	ERR_WD	R	0	Watchdog Timeout Error b0: No Watchdog Timeout error was recorded since the last read of the STATUS register. b1: An active channel has generated a Watchdog Timeout error. Refer to STATUS.ERR_CHAN field to determine which channel is the source of this error.
10	ERR_AHE	R	0	Amplitude High Error b0: No Amplitude High error was recorded since the last read of the STATUS register. b1: An active channel has generated an Amplitude High error. Refer to STATUS.ERR_CHAN field to determine which channel is the source of this error.
9	ERR_ALE	R	0	Amplitude Low Warning b0: No Amplitude Low warning was recorded since the last read of the STATUS register. b1: An active channel has generated an Amplitude Low warning. Refer to STATUS.ERR_CHAN field to determine which channel is the source of this warning.
8	ERR_ZC	R	0	Zero Count Error b0: No Zero Count error was recorded since the last read of the STATUS register. b1: An active channel has generated a Zero Count error. Refer to STATUS.ERR_CHAN field to determine which channel is the source of this error.
6	DRDY	R	0	Data Ready Flag. b0: No new conversion result was recorded in the STATUS register. b1: A new conversion result is ready. When in Single Channel Conversion, this indicates a single conversion is available. When in sequential mode, this indicates that a new conversion result for all active channels is now available.
3	CH0_UNREADCONV	R	0	Channel 0 Unread Conversion b0: No unread conversion is present for Channel 0. b1: An unread conversion is present for Channel 0. Read Register DATA_CH0 to retrieve conversion results.
2	CH1_UNREADCONV	R	0	Channel 1 Unread Conversion b0: No unread conversion is present for Channel 1. b1: An unread conversion is present for Channel 1. Read Register DATA_CH1 to retrieve conversion results.
1	CH2_UNREADCONV	R	0	Channel 2 Unread Conversion b0: No unread conversion is present for Channel 2. b1: An unread conversion is present for Channel 2. Read Register DATA_CH2 to retrieve conversion results (LDC1614 and LDC1314 only)
0	CH3_UNREADCONV	R	0	Channel 3 Unread Conversion b0: No unread conversion is present for Channel 3. b1: An unread conversion is present for Channel 3. Read Register DATA_CH3 to retrieve conversion results (LDC1614 and LDC1314 only)

### 4.3 Address 0x19, ERROR\_CONFIG

**Figure 6. Address 0x19, ERROR\_CONFIG**

15		14		13		12		11		10		9		8	
UR_ERR2OUT		OR_ERR2OUT		WD_ERR2OUT		AH_ERR2OUT		AL_ERR2OUT		RESERVED					
7		6		5		4		3		2		1		0	
UR_ERR2INT		OR_ERR2INT		WD_ERR2INT		AH_ERR2INT		AL_ERR2INT		ZC_ERR2INT		Reserved		DRDY_2INT	

LEGEND: R/W = Read/Write; R = Read only; -n = value after reset

**Table 5. Address 0x19, ERROR\_CONFIG**

Bit	Field	Type	Reset	Description
15	UR_ERR2OUT	R/W	0	Under-range Error to Output Register b0: Do not report Under-range errors in the DATA_CHx registers. b1: Report Under-range errors in the DATA_CHx.CHx_ERR_UR register field corresponding to the channel that generated the error.
14	OR_ERR2OUT	R/W	0	Over-range Error to Output Register b0: Do not report Over-range errors in the DATA_CHx registers. b1: Report Over-range errors in the DATA_CHx.CHx_ERR_OR register field corresponding to the channel that generated the error.
13	WD_ERR2OUT	R/W	0	Watchdog Timeout Error to Output Register b0: Do not report Watchdog Timeout errors in the DATA_CHx registers. b1: Report Watchdog Timeout errors in the DATA_CHx.CHx_ERR_WD register field corresponding to the channel that generated the error.
12	AH_ERR2OUT	R/W	0	Amplitude High Error to Output Register b0: Do not report Amplitude High errors in the DATA_CHx registers. b1: Report Amplitude High errors in the DATA_CHx.CHx_ERR_AE register field corresponding to the channel that generated the error.
11	AL_ERR2OUT	R/W	0	Amplitude Low Warning to Output Register b0: Do not report Amplitude High warnings in the DATA_CHx registers. b1: Report Amplitude Low warnings in the DATA_CHx.CHx_ERR_AE register field corresponding to the channel that generated the warning.
7	UR_ERR2INT	R/W	0	Under-range Error to INTB b0: Do not report Under-range errors by asserting INTB pin and STATUS register. b1: Report Under-range errors by asserting INTB pin and updating STATUS.ERR_UR register field.
6	OR_ERR2INT	R/W	0	Over-range Error to INTB b0: Do not report Over-range errors by asserting INTB pin and STATUS register. b1: Report Over-range errors by asserting INTB pin and updating STATUS.ERR_OR register field.
5	WD_ERR2INT	R/W	0	Watchdog Timeout Error to INTB b0: Do not report Watchdog Timeout errors by asserting INTB pin and STATUS register. b1: Report Watchdog Timeout errors by asserting INTB pin and updating STATUS.ERR_WD register field.
4	AH_ERR2INT	R/W	0	Amplitude High Error to INTB b0: Do not report Amplitude High errors by asserting INTB pin and STATUS register. b1: Report Amplitude High errors by asserting INTB pin and updating STATUS.ERR_AHE register field.

**Table 5. Address 0x19, ERROR\_CONFIG (continued)**

Bit	Field	Type	Reset	Description
3	AL_ERR2INT	R/W	0	Amplitude Low Warning to INTB b0: Do not report Amplitude Low warnings by asserting INTB pin and STATUS register. b1: Report Amplitude Low warnings by asserting INTB pin and updating STATUS.ERR_ALE register field.
2	ZC_ERR2INT	R/W	0	Zero Count Error to INTB b0: Do not report Zero Count errors by asserting INTB pin and STATUS register. b1: Report Zero Count errors by asserting INTB pin and updating STATUS.ERR_ZC register field.
1	Reserved	R/W	0	Reserved (set to b0)
0	DRDY_2INT	R/W	0	Data Ready Flag to INTB b0: Do not report Data Ready Flag by asserting INTB pin and STATUS register. b1: Report Data Ready Flag by asserting INTB pin and updating STATUS.DRDY register field.

## 5 Conclusion

The extensive error reporting that the LDC1612, LDC1614, LDC1312 and LDC1314 provide an effective means to diagnose sensor issues or device configuration errors. This summary of the various reporting methods and error conditions can greatly simplify an LDC system design.

## IMPORTANT NOTICE

Texas Instruments Incorporated and its subsidiaries (TI) reserve the right to make corrections, enhancements, improvements and other changes to its semiconductor products and services per JESD46, latest issue, and to discontinue any product or service per JESD48, latest issue. Buyers should obtain the latest relevant information before placing orders and should verify that such information is current and complete. All semiconductor products (also referred to herein as "components") are sold subject to TI's terms and conditions of sale supplied at the time of order acknowledgment.

TI warrants performance of its components to the specifications applicable at the time of sale, in accordance with the warranty in TI's terms and conditions of sale of semiconductor products. Testing and other quality control techniques are used to the extent TI deems necessary to support this warranty. Except where mandated by applicable law, testing of all parameters of each component is not necessarily performed.

TI assumes no liability for applications assistance or the design of Buyers' products. Buyers are responsible for their products and applications using TI components. To minimize the risks associated with Buyers' products and applications, Buyers should provide adequate design and operating safeguards.

TI does not warrant or represent that any license, either express or implied, is granted under any patent right, copyright, mask work right, or other intellectual property right relating to any combination, machine, or process in which TI components or services are used. Information published by TI regarding third-party products or services does not constitute a license to use such products or services or a warranty or endorsement thereof. Use of such information may require a license from a third party under the patents or other intellectual property of the third party, or a license from TI under the patents or other intellectual property of TI.

Reproduction of significant portions of TI information in TI data books or data sheets is permissible only if reproduction is without alteration and is accompanied by all associated warranties, conditions, limitations, and notices. TI is not responsible or liable for such altered documentation. Information of third parties may be subject to additional restrictions.

Resale of TI components or services with statements different from or beyond the parameters stated by TI for that component or service voids all express and any implied warranties for the associated TI component or service and is an unfair and deceptive business practice. TI is not responsible or liable for any such statements.

Buyer acknowledges and agrees that it is solely responsible for compliance with all legal, regulatory and safety-related requirements concerning its products, and any use of TI components in its applications, notwithstanding any applications-related information or support that may be provided by TI. Buyer represents and agrees that it has all the necessary expertise to create and implement safeguards which anticipate dangerous consequences of failures, monitor failures and their consequences, lessen the likelihood of failures that might cause harm and take appropriate remedial actions. Buyer will fully indemnify TI and its representatives against any damages arising out of the use of any TI components in safety-critical applications.

In some cases, TI components may be promoted specifically to facilitate safety-related applications. With such components, TI's goal is to help enable customers to design and create their own end-product solutions that meet applicable functional safety standards and requirements. Nonetheless, such components are subject to these terms.

No TI components are authorized for use in FDA Class III (or similar life-critical medical equipment) unless authorized officers of the parties have executed a special agreement specifically governing such use.

Only those TI components which TI has specifically designated as military grade or "enhanced plastic" are designed and intended for use in military/aerospace applications or environments. Buyer acknowledges and agrees that any military or aerospace use of TI components which have **not** been so designated is solely at the Buyer's risk, and that Buyer is solely responsible for compliance with all legal and regulatory requirements in connection with such use.

TI has specifically designated certain components as meeting ISO/TS16949 requirements, mainly for automotive use. In any case of use of non-designated products, TI will not be responsible for any failure to meet ISO/TS16949.

### Products

Audio	<a href="http://www.ti.com/audio">www.ti.com/audio</a>
Amplifiers	<a href="http://amplifier.ti.com">amplifier.ti.com</a>
Data Converters	<a href="http://dataconverter.ti.com">dataconverter.ti.com</a>
DLP® Products	<a href="http://www.dlp.com">www.dlp.com</a>
DSP	<a href="http://dsp.ti.com">dsp.ti.com</a>
Clocks and Timers	<a href="http://www.ti.com/clocks">www.ti.com/clocks</a>
Interface	<a href="http://interface.ti.com">interface.ti.com</a>
Logic	<a href="http://logic.ti.com">logic.ti.com</a>
Power Mgmt	<a href="http://power.ti.com">power.ti.com</a>
Microcontrollers	<a href="http://microcontroller.ti.com">microcontroller.ti.com</a>
RFID	<a href="http://www.ti-rfid.com">www.ti-rfid.com</a>
OMAP Applications Processors	<a href="http://www.ti.com/omap">www.ti.com/omap</a>
Wireless Connectivity	<a href="http://www.ti.com/wirelessconnectivity">www.ti.com/wirelessconnectivity</a>

### Applications

Automotive and Transportation	<a href="http://www.ti.com/automotive">www.ti.com/automotive</a>
Communications and Telecom	<a href="http://www.ti.com/communications">www.ti.com/communications</a>
Computers and Peripherals	<a href="http://www.ti.com/computers">www.ti.com/computers</a>
Consumer Electronics	<a href="http://www.ti.com/consumer-apps">www.ti.com/consumer-apps</a>
Energy and Lighting	<a href="http://www.ti.com/energy">www.ti.com/energy</a>
Industrial	<a href="http://www.ti.com/industrial">www.ti.com/industrial</a>
Medical	<a href="http://www.ti.com/medical">www.ti.com/medical</a>
Security	<a href="http://www.ti.com/security">www.ti.com/security</a>
Space, Avionics and Defense	<a href="http://www.ti.com/space-avionics-defense">www.ti.com/space-avionics-defense</a>
Video and Imaging	<a href="http://www.ti.com/video">www.ti.com/video</a>

### TI E2E Community

[e2e.ti.com](http://e2e.ti.com)