

TPSM82916 Step-Down Converter Evaluation Module



Description

The TPSM82916 evaluation module (EVM) (SR073) facilitates the evaluation of the TPSM82916 and TPSM82914. The SR073 uses the 6A TPSM82916 to output a 1.2V output voltage from input voltages between 3V and 17V. Due to extremely low noise, the TPSM82916 is a high-efficiency alternative to low-dropout (LDO) linear regulators in noise-sensitive circuits.

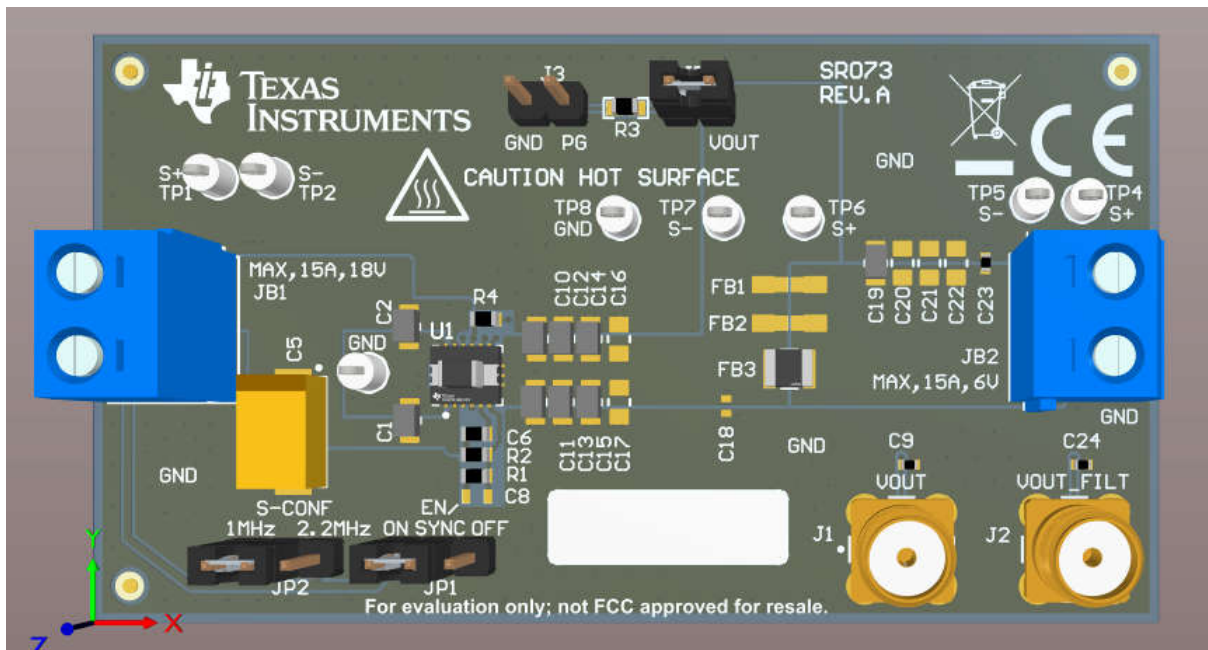
Features

- Low output 1/f noise < 20 μ V_{RMS} (100Hz to 100kHz)
- Low output voltage ripple < 10 μ V_{RMS} after ferrite bead
- High PSRR of > 65dB (up to 100kHz)
- 2.2MHz, 1.4MHz, or 1MHz fixed frequency peak current mode control
- Synchronizable with external clock (optional)

- Integrated loop compensation supports ferrite bead for second stage L-C filter with 30dB attenuation
- Spread spectrum modulation (optional)
- 3.0V to 17V input voltage range
- 0.8V to 5.5V output voltage range
- Output voltage accuracy of $\pm 1\%$ over temperature
- Precise enable input allows user-defined undervoltage lockout and exact sequencing
- Adjustable soft start
- Power-good output
- Output discharge (optional)
- Fully assembled, tested, and proven PCB layout

Applications

- [Wireless infrastructure](#)
- [Test and measurement](#)
- [Aerospace and defense \(radar, avionics\)](#)
- [Medical](#)



TPSM82916EVM

1 Evaluation Module Overview

1.1 Introduction

The TPSM82916 is a low noise, low ripple, synchronous step-down converter in a small 4.1mm × 4.7mm QFN package. This user's guide describes the characteristics, operation, and the use of the TPSM82916EVM evaluation module (EVM). This user's guide includes EVM specifications, connectors, schematics, bill of materials, and the board layout of the evaluation module (EVM) for the TPSM82916.

1.2 Kit Contents

- TPSM82916EVM Circuit Board
- EVM Disclaimer Read Me

1.3 Specification

TPSM82916EVM primary function is to evaluate the TPSM82916 and TPSM82914 low noise, low ripple devices. Multiple test points enable monitoring of the various input and output signals for thorough performance evaluation. The EVM can be configured to synchronize to an external clock as well as configured for a bode injection signal.

1.4 Device Information

The switching frequency of this EVM is set to 1MHz by default but can be easily adjusted to 1.4MHz, 2.2MHz, or to a synchronized clock. This evaluation module is provided with the TPSM82916, however, the EVM also supports the TPSM82914. TPSM82916 and TPSM82914 are low-noise (< 20µVRMS) and low-ripple (< 10µVRMS) buck power modules in a small 4.1mm × 4.7mm QFN package.

1.5 Cautions and Warnings

WARNING



The TPSM82916EVM circuit module can become hot during operation due to dissipation of heat. Avoid contact with the board. Follow all applicable safety procedures applicable to your laboratory.

CAUTION



Do not leave the EVM powered when unattended.

WARNING

The circuit module has signal traces, components, and component leads on the bottom of the board. This can result in exposed voltages, hot surfaces, or sharp edges. Do not reach under the board during operation.

CAUTION

The circuit module can be damaged by over temperature. To avoid damage, monitor the temperature during evaluation and provide cooling, as needed, for the system environment.

CAUTION

Some power supplies can be damaged by application of external voltages. If using more than one power supply, then check the equipment requirements and use blocking diodes or other isolation techniques, as needed, to prevent damage to the equipment.

CAUTION

The communication interface is not isolated on the EVM. Be sure no ground potential exists between the computer and the EVM. Also be aware that the computer is referenced to the battery-potential of the EVM.

2 Hardware

2.1 Setup

This section describes how to properly use the EVM.

2.1.1 Input and Output Connector Descriptions

JB1 – V_{IN}	Positive input connection from the input supply for the EVM. Connect the input power supply between V _{IN} and GND.
TP1/TP2– S+/ S-	Input voltage sense connection. Measure the input voltage at these test points.
JB2 – V_{OUT}_FILT	Filtered output voltage connection. Connect any resistive or electronic load here.
TP4/TP5– S+/ S-	Filtered output voltage sense connections. Measure the output voltage at these test points.
TP6/TP7– S+/ S-	Output voltage sense connections. Measure the output voltage at these test points.
J3 – PG/GND	The PG output is on pin 1 of this header with a convenient ground on pin 2.
J1 – V_{OUT} Ripple Measurement	Use this SMA connector to measure the output voltage ripple before the second LC filter.
J2 – V_{OUT}_FILT Ripple Measurement	Use this SMA connector to measure the output voltage ripple after the second LC filter.
JP1 – EN/SYNC	<p>EN/SYNC pin input jumper. Place the supplied jumper across ON and EN to turn on the IC. Place the jumper across OFF and EN to turn off the IC. Remove the jumper to set a configurable enable threshold voltage with R6 and R7.</p> <p>With the jumper removed, a clock signal can be applied on JP1 to synchronize the IC switching.</p>
JP2 – S-CONF	<p>S-CONF pin input jumper. Place the supplied jumper across 2.2MHz and S-CONF to operate the IC with a 2.2MHz switching frequency without spread spectrum or output discharge. Place the jumper across 1MHz and S-CONF to operate the IC with a 1MHz switching frequency without spread spectrum or output discharge. Remove the jumper to operate the IC with the S-CONF settings set by R4 and to allow clock synchronization.</p> <hr/> <p style="text-align: center;">Note</p> <p>Set the JP2 jumper position before enabling the IC. Changing JP2 after enabling the IC has no effect.</p> <hr/> <p style="text-align: center;">Note</p> <p>When using the 2.2MHz setting, make sure that the input voltage and output voltage do not violate the minimum on-time in the TPS6291x 3V to 17V, 4.5A/6A/8A, Low Noise and Low Ripple Buck Converter With Integrated Ferrite Bead Filter data sheet.</p> <hr/>
JP3 – PG Pullup Voltage	PG pin pullup voltage jumper. Place the supplied jumper on JP3 to connect the PG pin pullup resistor to V _{OUT} . Alternatively, the jumper can be removed and a different voltage can be supplied on pin 2 to pull up the PG pin to a different level. This externally applied voltage must remain below 18V.

3 Implementation Results

3.1 Test Results

The TPSM82916EVM was used to take all the data in the TPSM82916 data sheet. See the device data sheet for the performance of this EVM.

The thermal performance of the EVM is shown in [Figure 3-1](#).

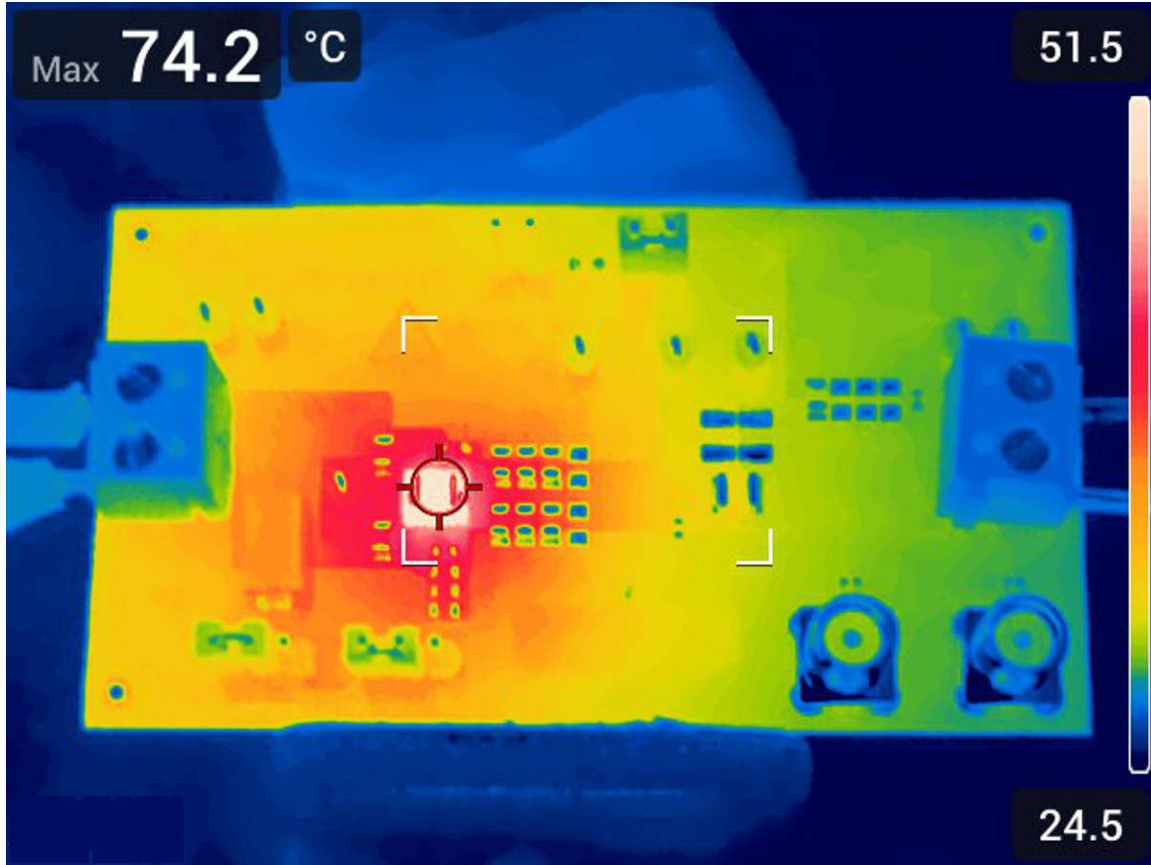


Figure 3-1. Thermal Performance ($V_{IN} = 12V$, $V_{OUT} = 1.2V$, $I_{OUT} = 6A$, JP2 1MHz)

3.2 Ripple Measurement Setup

The extremely low noise and low ripple levels of the TPSM82916 necessitate a low-noise test setup for accurately measuring the output voltage ripple. Use the SMA connectors, J1 and J2, to measure the output voltage ripple, before and after the second LC filter. Do not use a normal 10x oscilloscope probe with a high-impedance termination to the oscilloscope. Instead, connect the SMA connector directly to the oscilloscope with a coaxial (coax) cable through a DC blocker. A DC blocker enables the use of the smallest V/div setting on the oscilloscope to view the ripple. To prevent noise pickup and block reflections on the coax cable, the oscilloscope must be set to full bandwidth (BW) and DC coupling with a 50Ω termination.

3.3 Modifications

The printed-circuit board (PCB) for this EVM is designed to accommodate some modifications by the user. Additional input and output capacitors can be added. Also, the input voltage at which the IC turns on can be adjusted with two resistors, the soft-start time, and low frequency noise filtering can be changed, a feedforward capacitor can be added, and the switching frequency, output discharge setting, and spread spectrum setting can be changed. Finally, the loop response can be measured. See the [TPS6291x 3V to 17V, 4.5A/6A/8A, Low Noise and Low Ripple Buck Converter With Integrated Ferrite Bead Filter](#) data sheet for details of the various settings.

3.3.1 Input and Output Capacitors

C5 is provided for an input bulk capacitor. C1 and C2 are the additional bulk input capacitors and C3 and C4 are the input high-frequency bypass capacitors.

C16 and C17 are provided for additional bulk output capacitors for the first stage LC filter. C20, C21 and C22 are provided for additional bulk output capacitors for the second stage LC filter. These capacitors are not required for proper operation but can be used to reduce the output voltage ripple. The total output capacitance must remain within the recommended range in the [TPS6291x 3V to 17V, 4.5A/6A/8A, Low Noise and Low Ripple Buck Converter With Integrated Ferrite Bead Filter](#) data sheet for proper operation. C18 and C23 are provided for high-frequency bypass capacitors.

3.3.2 Configurable Enable Threshold Voltage

With JP1 removed, R6 and R7 can be installed to set a user-selectable input voltage at which the IC turns on.

3.3.3 NR/SS Capacitor

C6 sets the soft-start time and the low frequency noise filtering. This capacitor can be changed to set other soft-start times and noise filtering levels.

3.3.4 Feedforward Capacitor

C8 is provided as a feedforward capacitor (C_{FF}). Installing this capacitor can reduce the low-frequency noise, especially for higher output voltages.

3.3.5 S-CONF Resistor

R4 selects the switching frequency, spread spectrum, output discharge, and clock synchronization settings. This resistor can be changed and JP2 also selects different settings.

3.3.6 Loop Response Measurement

The loop response can be measured with simple changes to the circuitry. First, cut the short section of trace on the bottom layer between the pads of R5 resistor. Second, cut the trace on the bottom layer that connects to R8. These changes are shown in Figure 3-2. Third, install a 49.9Ω resistor across R5 pads on the back of the PCB and install a 0Ω resistor across R8 pads on the back of the PCB. The pads are spaced to allow installation of a 0603-sized resistors. Lastly, replace the ferrite bead (FB1) with a 0Ω resistor and remove any second LC stage output capacitors C19 to C23. The second LC filter must be removed to break the complete feedback loop and measure the loop response. With these changes, an AC signal (10mV, peak-to-peak amplitude recommended) can be injected into the control loop across the added 49.9Ω resistor.

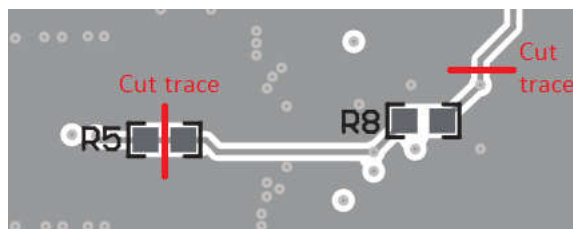


Figure 3-2. Loop Response Measurement Modification (Bottom Layer)

3.3.7 Single LC Filter Operation

For applications which do not require the lowest output voltage ripple, the TPSM82916 can be operated without the second LC filter. To operate with a single LC filter, replace FB1 with a 0Ω resistor. The total output capacitance must remain within the recommended range in the [TPS6291x 3V to 17V, 4.5A/6A/8A, Low Noise and Low Ripple Buck Converter With Integrated Ferrite Bead Filter](#) data sheet for proper operation.

3.4 Performance Specification

A summary of the TPSM82916EVM performance specifications is provided in [Table 3-1](#).

Table 3-1. TPSM82916EVM Performance Specification Summary

SPECIFICATION	TEST CONDITIONS	MIN	TYP	MAX	UNIT
Input voltage		3	12	17	V
Output voltage setpoint			1.2		V
Output current		0		6	A
S-CONF (R4) setting	1.4MHz, no spread spectrum, output discharge disabled		6.04		kΩ

4 Hardware Design Files

4.1 Schematic

The EVM schematic is illustrated in [Figure 4-1](#).

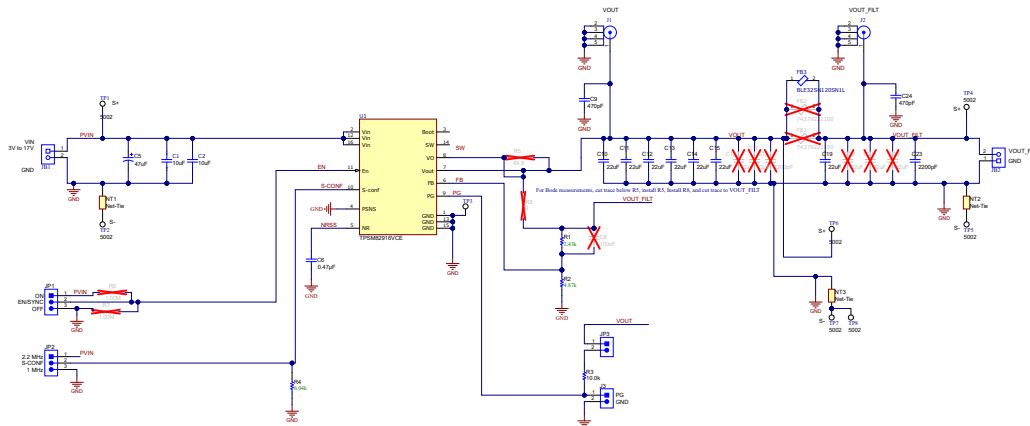


Figure 4-1. TPSM82916EVM Schematic

4.2 PCB Layout

This section provides the EVM board layout and illustrations in [Figure 4-2](#) through [Figure 4-6](#). The Gerber files are available on the [TPSM82916EVM product page](#).

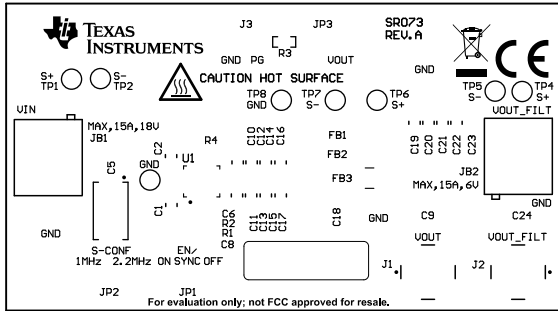


Figure 4-2. Top Assembly

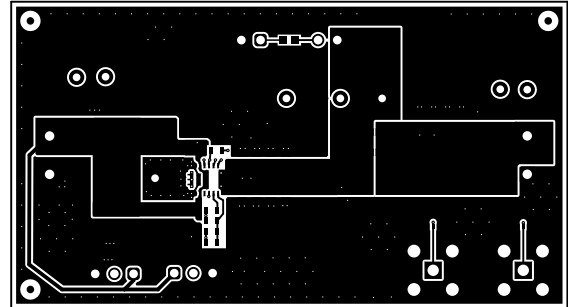


Figure 4-3. Top Layer

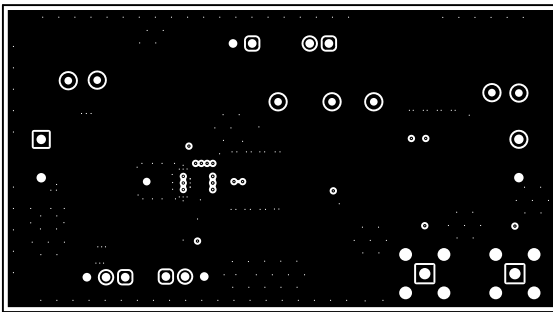


Figure 4-4. Internal Layer 1

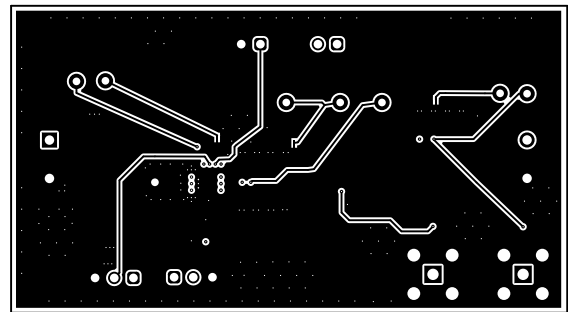


Figure 4-5. Internal Layer 2

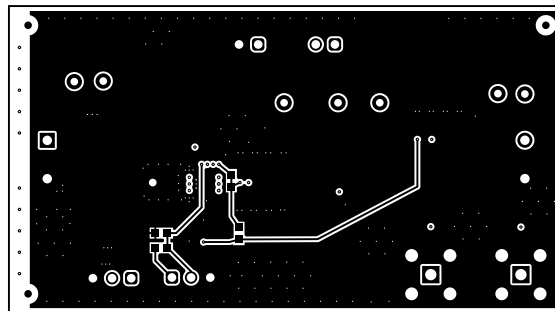


Figure 4-6. Bottom Layer (Mirrored)

4.3 Bill of Materials

The bill of materials for this EVM is listed in [Table 4-1](#).

Table 4-1. TPSM82916EVM Bill of Materials

Reference Designator	Value	Description	Package	Part Number	Manufacturer
C1, C2	10 μ F	CAP, CERM, 10 μ F, 25V, +/- 10%, X7S	0805	C2012X7S1E106K125AC	TDK
C3, C4, C23	2200pF	CAP, CERM, 2200pF, 50V, +/- 10%, X7R	0402	GRM155R71H222KA01D	MuRata
C5	47 μ F	CAP, TA, 47 μ F, 35V, +/- 10%, 0.3 Ω	7343-43	T495X476K035ATE300	Kemet
C6	0.47 μ F	CAP, CERM, 0.47 μ F, 25V, +/- 10%, X7R	0603	C1608X7R1E474K080AE	TDK
C7	0.1 μ F	CAP, CERM, 0.1 μ F, 50V, +/- 10%, X7R	0402	C1005X7R1H104K050BB	TDK
C9, C24	470pF	CAP, CERM, 470pF, 50V, +/- 5%, C0G/NP0	0402	GRM1555C1H471JA01D	muRata
C10, C11, C12, C13, C14, C15, C19	22 μ F	CAP, CERM, 22 μ F, 10V, +/- 20%, X7S	0805	C2012X7S1A226M125AC	TDK
FB3		Ferrite bead, 12 Ω at 100MHz, 20A	1210	BLE32SN120SN1L	muRata
R1	2.43k Ω	RES, 2.43k Ω , 1%, 0.1W	0603	Std	Std
R2	4.87k Ω	RES, 4.87k Ω , 1%, 0.1W	0603	Std	Std
R3	10.0k Ω	RES, 10.0k Ω , 1%, 0.1W	0603	Std	Std
R4	6.04k Ω	RES, 6.04k Ω , 1%, 0.1W	0603	Std	Std
U1	TPSM82916 ⁽¹⁾	3V to 17V, 6A Low Noise (20 μ V _{RMS}) and Low Ripple (200 μ V _{PP}) buck module	4.1 × 4.7mm	TPSM82916VCE	Texas Instruments

- (1) The TPSM82916EVM can be populated with TPSM82916 (U1) devices that do not contain the correct top-side markings on the top of the device. These devices are still fully-tested TPSM82916 devices.

5 Additional Information

5.1 Trademarks

All trademarks are the property of their respective owners.

STANDARD TERMS FOR EVALUATION MODULES

1. *Delivery:* TI delivers TI evaluation boards, kits, or modules, including any accompanying demonstration software, components, and/or documentation which may be provided together or separately (collectively, an "EVM" or "EVMs") to the User ("User") in accordance with the terms set forth herein. User's acceptance of the EVM is expressly subject to the following terms.
 - 1.1 EVMs are intended solely for product or software developers for use in a research and development setting to facilitate feasibility evaluation, experimentation, or scientific analysis of TI semiconductors products. EVMs have no direct function and are not finished products. EVMs shall not be directly or indirectly assembled as a part or subassembly in any finished product. For clarification, any software or software tools provided with the EVM ("Software") shall not be subject to the terms and conditions set forth herein but rather shall be subject to the applicable terms that accompany such Software
 - 1.2 EVMs are not intended for consumer or household use. EVMs may not be sold, sublicensed, leased, rented, loaned, assigned, or otherwise distributed for commercial purposes by Users, in whole or in part, or used in any finished product or production system.
2. *Limited Warranty and Related Remedies/Disclaimers:*
 - 2.1 These terms do not apply to Software. The warranty, if any, for Software is covered in the applicable Software License Agreement.
 - 2.2 TI warrants that the TI EVM will conform to TI's published specifications for ninety (90) days after the date TI delivers such EVM to User. Notwithstanding the foregoing, TI shall not be liable for a nonconforming EVM if (a) the nonconformity was caused by neglect, misuse or mistreatment by an entity other than TI, including improper installation or testing, or for any EVMs that have been altered or modified in any way by an entity other than TI, (b) the nonconformity resulted from User's design, specifications or instructions for such EVMs or improper system design, or (c) User has not paid on time. Testing and other quality control techniques are used to the extent TI deems necessary. TI does not test all parameters of each EVM. User's claims against TI under this Section 2 are void if User fails to notify TI of any apparent defects in the EVMs within ten (10) business days after delivery, or of any hidden defects with ten (10) business days after the defect has been detected.
 - 2.3 TI's sole liability shall be at its option to repair or replace EVMs that fail to conform to the warranty set forth above, or credit User's account for such EVM. TI's liability under this warranty shall be limited to EVMs that are returned during the warranty period to the address designated by TI and that are determined by TI not to conform to such warranty. If TI elects to repair or replace such EVM, TI shall have a reasonable time to repair such EVM or provide replacements. Repaired EVMs shall be warranted for the remainder of the original warranty period. Replaced EVMs shall be warranted for a new full ninety (90) day warranty period.

WARNING

Evaluation Kits are intended solely for use by technically qualified, professional electronics experts who are familiar with the dangers and application risks associated with handling electrical mechanical components, systems, and subsystems.

User shall operate the Evaluation Kit within TI's recommended guidelines and any applicable legal or environmental requirements as well as reasonable and customary safeguards. Failure to set up and/or operate the Evaluation Kit within TI's recommended guidelines may result in personal injury or death or property damage. Proper set up entails following TI's instructions for electrical ratings of interface circuits such as input, output and electrical loads.

NOTE:

EXPOSURE TO ELECTROSTATIC DISCHARGE (ESD) MAY CAUSE DEGRADATION OR FAILURE OF THE EVALUATION KIT; TI RECOMMENDS STORAGE OF THE EVALUATION KIT IN A PROTECTIVE ESD BAG.

3 Regulatory Notices:

3.1 United States

3.1.1 Notice applicable to EVMs not FCC-Approved:

FCC NOTICE: This kit is designed to allow product developers to evaluate electronic components, circuitry, or software associated with the kit to determine whether to incorporate such items in a finished product and software developers to write software applications for use with the end product. This kit is not a finished product and when assembled may not be resold or otherwise marketed unless all required FCC equipment authorizations are first obtained. Operation is subject to the condition that this product not cause harmful interference to licensed radio stations and that this product accept harmful interference. Unless the assembled kit is designed to operate under part 15, part 18 or part 95 of this chapter, the operator of the kit must operate under the authority of an FCC license holder or must secure an experimental authorization under part 5 of this chapter.

3.1.2 For EVMs annotated as FCC – FEDERAL COMMUNICATIONS COMMISSION Part 15 Compliant:

CAUTION

This device complies with part 15 of the FCC Rules. Operation is subject to the following two conditions: (1) This device may not cause harmful interference, and (2) this device must accept any interference received, including interference that may cause undesired operation.

Changes or modifications not expressly approved by the party responsible for compliance could void the user's authority to operate the equipment.

FCC Interference Statement for Class A EVM devices

NOTE: This equipment has been tested and found to comply with the limits for a Class A digital device, pursuant to part 15 of the FCC Rules. These limits are designed to provide reasonable protection against harmful interference when the equipment is operated in a commercial environment. This equipment generates, uses, and can radiate radio frequency energy and, if not installed and used in accordance with the instruction manual, may cause harmful interference to radio communications. Operation of this equipment in a residential area is likely to cause harmful interference in which case the user will be required to correct the interference at his own expense.

FCC Interference Statement for Class B EVM devices

NOTE: This equipment has been tested and found to comply with the limits for a Class B digital device, pursuant to part 15 of the FCC Rules. These limits are designed to provide reasonable protection against harmful interference in a residential installation. This equipment generates, uses and can radiate radio frequency energy and, if not installed and used in accordance with the instructions, may cause harmful interference to radio communications. However, there is no guarantee that interference will not occur in a particular installation. If this equipment does cause harmful interference to radio or television reception, which can be determined by turning the equipment off and on, the user is encouraged to try to correct the interference by one or more of the following measures:

- Reorient or relocate the receiving antenna.
- Increase the separation between the equipment and receiver.
- Connect the equipment into an outlet on a circuit different from that to which the receiver is connected.
- Consult the dealer or an experienced radio/TV technician for help.

3.2 Canada

3.2.1 For EVMs issued with an Industry Canada Certificate of Conformance to RSS-210 or RSS-247

Concerning EVMs Including Radio Transmitters:

This device complies with Industry Canada license-exempt RSSs. Operation is subject to the following two conditions:

(1) this device may not cause interference, and (2) this device must accept any interference, including interference that may cause undesired operation of the device.

Concernant les EVMs avec appareils radio:

Le présent appareil est conforme aux CNR d'Industrie Canada applicables aux appareils radio exempts de licence. L'exploitation est autorisée aux deux conditions suivantes: (1) l'appareil ne doit pas produire de brouillage, et (2) l'utilisateur de l'appareil doit accepter tout brouillage radioélectrique subi, même si le brouillage est susceptible d'en compromettre le fonctionnement.

Concerning EVMs Including Detachable Antennas:

Under Industry Canada regulations, this radio transmitter may only operate using an antenna of a type and maximum (or lesser) gain approved for the transmitter by Industry Canada. To reduce potential radio interference to other users, the antenna type and its gain should be so chosen that the equivalent isotropically radiated power (e.i.r.p.) is not more than that necessary for successful communication. This radio transmitter has been approved by Industry Canada to operate with the antenna types listed in the user guide with the maximum permissible gain and required antenna impedance for each antenna type indicated. Antenna types not included in this list, having a gain greater than the maximum gain indicated for that type, are strictly prohibited for use with this device.

Concernant les EVMs avec antennes détachables

Conformément à la réglementation d'Industrie Canada, le présent émetteur radio peut fonctionner avec une antenne d'un type et d'un gain maximal (ou inférieur) approuvé pour l'émetteur par Industrie Canada. Dans le but de réduire les risques de brouillage radioélectrique à l'intention des autres utilisateurs, il faut choisir le type d'antenne et son gain de sorte que la puissance isotrope rayonnée équivalente (p.i.r.e.) ne dépasse pas l'intensité nécessaire à l'établissement d'une communication satisfaisante. Le présent émetteur radio a été approuvé par Industrie Canada pour fonctionner avec les types d'antenne énumérés dans le manuel d'usage et ayant un gain admissible maximal et l'impédance requise pour chaque type d'antenne. Les types d'antenne non inclus dans cette liste, ou dont le gain est supérieur au gain maximal indiqué, sont strictement interdits pour l'exploitation de l'émetteur.

3.3 Japan

3.3.1 *Notice for EVMs delivered in Japan:* Please see http://www.tij.co.jp/lstds/ti_ja/general/eStore/notice_01.page 日本国内に輸入される評価用キット、ボードについては、次のところをご覧ください。

<https://www.ti.com/ja-jp/legal/notice-for-evaluation-kits-delivered-in-japan.html>

3.3.2 *Notice for Users of EVMs Considered "Radio Frequency Products" in Japan:* EVMs entering Japan may not be certified by TI as conforming to Technical Regulations of Radio Law of Japan.

If User uses EVMs in Japan, not certified to Technical Regulations of Radio Law of Japan, User is required to follow the instructions set forth by Radio Law of Japan, which includes, but is not limited to, the instructions below with respect to EVMs (which for the avoidance of doubt are stated strictly for convenience and should be verified by User):

1. Use EVMs in a shielded room or any other test facility as defined in the notification #173 issued by Ministry of Internal Affairs and Communications on March 28, 2006, based on Sub-section 1.1 of Article 6 of the Ministry's Rule for Enforcement of Radio Law of Japan,
2. Use EVMs only after User obtains the license of Test Radio Station as provided in Radio Law of Japan with respect to EVMs, or
3. Use of EVMs only after User obtains the Technical Regulations Conformity Certification as provided in Radio Law of Japan with respect to EVMs. Also, do not transfer EVMs, unless User gives the same notice above to the transferee. Please note that if User does not follow the instructions above, User will be subject to penalties of Radio Law of Japan.

【無線電波を送信する製品の開発キットをお使いになる際の注意事項】 開発キットの中には技術基準適合証明を受けていないものがあります。技術適合証明を受けていないものご使用に際しては、電波法遵守のため、以下のいずれかの措置を取っていただく必要がありますのでご注意ください。

1. 電波法施行規則第6条第1項第1号に基づく平成18年3月28日総務省告示第173号で定められた電波暗室等の試験設備でご使用いただく。
2. 実験局の免許を取得後ご使用いただく。
3. 技術基準適合証明を取得後ご使用いただく。

なお、本製品は、上記の「ご使用にあたっての注意」を譲渡先、移転先に通知しない限り、譲渡、移転できないものとします。

上記を遵守頂けない場合は、電波法の罰則が適用される可能性があることをご留意ください。日本テキサス・インスツルメンツ株式会社
東京都新宿区西新宿 6 丁目 2 4 番 1 号
西新宿三井ビル

3.3.3 *Notice for EVMs for Power Line Communication:* Please see http://www.tij.co.jp/lstds/ti_ja/general/eStore/notice_02.page

電力線搬送波通信についての開発キットをお使いになる際の注意事項については、次のところをご覧ください。 <https://www.ti.com/ja-jp/legal/notice-for-evaluation-kits-for-power-line-communication.html>

3.4 European Union

3.4.1 *For EVMs subject to EU Directive 2014/30/EU (Electromagnetic Compatibility Directive):*

This is a class A product intended for use in environments other than domestic environments that are connected to a low-voltage power-supply network that supplies buildings used for domestic purposes. In a domestic environment this product may cause radio interference in which case the user may be required to take adequate measures.

-
4. *EVM Use Restrictions and Warnings:*
 - 4.1 EVMS ARE NOT FOR USE IN FUNCTIONAL SAFETY AND/OR SAFETY CRITICAL EVALUATIONS, INCLUDING BUT NOT LIMITED TO EVALUATIONS OF LIFE SUPPORT APPLICATIONS.
 - 4.2 User must read and apply the user guide and other available documentation provided by TI regarding the EVM prior to handling or using the EVM, including without limitation any warning or restriction notices. The notices contain important safety information related to, for example, temperatures and voltages.
 - 4.3 *Safety-Related Warnings and Restrictions:*
 - 4.3.1 User shall operate the EVM within TI's recommended specifications and environmental considerations stated in the user guide, other available documentation provided by TI, and any other applicable requirements and employ reasonable and customary safeguards. Exceeding the specified performance ratings and specifications (including but not limited to input and output voltage, current, power, and environmental ranges) for the EVM may cause personal injury or death, or property damage. If there are questions concerning performance ratings and specifications, User should contact a TI field representative prior to connecting interface electronics including input power and intended loads. Any loads applied outside of the specified output range may also result in unintended and/or inaccurate operation and/or possible permanent damage to the EVM and/or interface electronics. Please consult the EVM user guide prior to connecting any load to the EVM output. If there is uncertainty as to the load specification, please contact a TI field representative. During normal operation, even with the inputs and outputs kept within the specified allowable ranges, some circuit components may have elevated case temperatures. These components include but are not limited to linear regulators, switching transistors, pass transistors, current sense resistors, and heat sinks, which can be identified using the information in the associated documentation. When working with the EVM, please be aware that the EVM may become very warm.
 - 4.3.2 EVMs are intended solely for use by technically qualified, professional electronics experts who are familiar with the dangers and application risks associated with handling electrical mechanical components, systems, and subsystems. User assumes all responsibility and liability for proper and safe handling and use of the EVM by User or its employees, affiliates, contractors or designees. User assumes all responsibility and liability to ensure that any interfaces (electronic and/or mechanical) between the EVM and any human body are designed with suitable isolation and means to safely limit accessible leakage currents to minimize the risk of electrical shock hazard. User assumes all responsibility and liability for any improper or unsafe handling or use of the EVM by User or its employees, affiliates, contractors or designees.
 - 4.4 User assumes all responsibility and liability to determine whether the EVM is subject to any applicable international, federal, state, or local laws and regulations related to User's handling and use of the EVM and, if applicable, User assumes all responsibility and liability for compliance in all respects with such laws and regulations. User assumes all responsibility and liability for proper disposal and recycling of the EVM consistent with all applicable international, federal, state, and local requirements.
 5. *Accuracy of Information:* To the extent TI provides information on the availability and function of EVMs, TI attempts to be as accurate as possible. However, TI does not warrant the accuracy of EVM descriptions, EVM availability or other information on its websites as accurate, complete, reliable, current, or error-free.
 6. *Disclaimers:*
 - 6.1 EXCEPT AS SET FORTH ABOVE, EVMS AND ANY MATERIALS PROVIDED WITH THE EVM (INCLUDING, BUT NOT LIMITED TO, REFERENCE DESIGNS AND THE DESIGN OF THE EVM ITSELF) ARE PROVIDED "AS IS" AND "WITH ALL FAULTS." TI DISCLAIMS ALL OTHER WARRANTIES, EXPRESS OR IMPLIED, REGARDING SUCH ITEMS, INCLUDING BUT NOT LIMITED TO ANY EPIDEMIC FAILURE WARRANTY OR IMPLIED WARRANTIES OF MERCHANTABILITY OR FITNESS FOR A PARTICULAR PURPOSE OR NON-INFRINGEMENT OF ANY THIRD PARTY PATENTS, COPYRIGHTS, TRADE SECRETS OR OTHER INTELLECTUAL PROPERTY RIGHTS.
 - 6.2 EXCEPT FOR THE LIMITED RIGHT TO USE THE EVM SET FORTH HEREIN, NOTHING IN THESE TERMS SHALL BE CONSTRUED AS GRANTING OR CONFERRING ANY RIGHTS BY LICENSE, PATENT, OR ANY OTHER INDUSTRIAL OR INTELLECTUAL PROPERTY RIGHT OF TI, ITS SUPPLIERS/LICENSORS OR ANY OTHER THIRD PARTY, TO USE THE EVM IN ANY FINISHED END-USER OR READY-TO-USE FINAL PRODUCT, OR FOR ANY INVENTION, DISCOVERY OR IMPROVEMENT, REGARDLESS OF WHEN MADE, CONCEIVED OR ACQUIRED.
 7. *USER'S INDEMNITY OBLIGATIONS AND REPRESENTATIONS.* USER WILL DEFEND, INDEMNIFY AND HOLD TI, ITS LICENSORS AND THEIR REPRESENTATIVES HARMLESS FROM AND AGAINST ANY AND ALL CLAIMS, DAMAGES, LOSSES, EXPENSES, COSTS AND LIABILITIES (COLLECTIVELY, "CLAIMS") ARISING OUT OF OR IN CONNECTION WITH ANY HANDLING OR USE OF THE EVM THAT IS NOT IN ACCORDANCE WITH THESE TERMS. THIS OBLIGATION SHALL APPLY WHETHER CLAIMS ARISE UNDER STATUTE, REGULATION, OR THE LAW OF TORT, CONTRACT OR ANY OTHER LEGAL THEORY, AND EVEN IF THE EVM FAILS TO PERFORM AS DESCRIBED OR EXPECTED.
-

8. *Limitations on Damages and Liability:*

8.1 *General Limitations.* IN NO EVENT SHALL TI BE LIABLE FOR ANY SPECIAL, COLLATERAL, INDIRECT, PUNITIVE, INCIDENTAL, CONSEQUENTIAL, OR EXEMPLARY DAMAGES IN CONNECTION WITH OR ARISING OUT OF THESE TERMS OR THE USE OF THE EVMS , REGARDLESS OF WHETHER TI HAS BEEN ADVISED OF THE POSSIBILITY OF SUCH DAMAGES. EXCLUDED DAMAGES INCLUDE, BUT ARE NOT LIMITED TO, COST OF REMOVAL OR REINSTALLATION, ANCILLARY COSTS TO THE PROCUREMENT OF SUBSTITUTE GOODS OR SERVICES, RETESTING, OUTSIDE COMPUTER TIME, LABOR COSTS, LOSS OF GOODWILL, LOSS OF PROFITS, LOSS OF SAVINGS, LOSS OF USE, LOSS OF DATA, OR BUSINESS INTERRUPTION. NO CLAIM, SUIT OR ACTION SHALL BE BROUGHT AGAINST TI MORE THAN TWELVE (12) MONTHS AFTER THE EVENT THAT GAVE RISE TO THE CAUSE OF ACTION HAS OCCURRED.

8.2 *Specific Limitations.* IN NO EVENT SHALL TI'S AGGREGATE LIABILITY FROM ANY USE OF AN EVM PROVIDED HEREUNDER, INCLUDING FROM ANY WARRANTY, INDEMNITY OR OTHER OBLIGATION ARISING OUT OF OR IN CONNECTION WITH THESE TERMS, , EXCEED THE TOTAL AMOUNT PAID TO TI BY USER FOR THE PARTICULAR EVM(S) AT ISSUE DURING THE PRIOR TWELVE (12) MONTHS WITH RESPECT TO WHICH LOSSES OR DAMAGES ARE CLAIMED. THE EXISTENCE OF MORE THAN ONE CLAIM SHALL NOT ENLARGE OR EXTEND THIS LIMIT.

9. *Return Policy.* Except as otherwise provided, TI does not offer any refunds, returns, or exchanges. Furthermore, no return of EVM(s) will be accepted if the package has been opened and no return of the EVM(s) will be accepted if they are damaged or otherwise not in a resalable condition. If User feels it has been incorrectly charged for the EVM(s) it ordered or that delivery violates the applicable order, User should contact TI. All refunds will be made in full within thirty (30) working days from the return of the components(s), excluding any postage or packaging costs.

10. *Governing Law:* These terms and conditions shall be governed by and interpreted in accordance with the laws of the State of Texas, without reference to conflict-of-laws principles. User agrees that non-exclusive jurisdiction for any dispute arising out of or relating to these terms and conditions lies within courts located in the State of Texas and consents to venue in Dallas County, Texas. Notwithstanding the foregoing, any judgment may be enforced in any United States or foreign court, and TI may seek injunctive relief in any United States or foreign court.

Mailing Address: Texas Instruments, Post Office Box 655303, Dallas, Texas 75265
Copyright © 2023, Texas Instruments Incorporated

IMPORTANT NOTICE AND DISCLAIMER

TI PROVIDES TECHNICAL AND RELIABILITY DATA (INCLUDING DATA SHEETS), DESIGN RESOURCES (INCLUDING REFERENCE DESIGNS), APPLICATION OR OTHER DESIGN ADVICE, WEB TOOLS, SAFETY INFORMATION, AND OTHER RESOURCES "AS IS" AND WITH ALL FAULTS, AND DISCLAIMS ALL WARRANTIES, EXPRESS AND IMPLIED, INCLUDING WITHOUT LIMITATION ANY IMPLIED WARRANTIES OF MERCHANTABILITY, FITNESS FOR A PARTICULAR PURPOSE OR NON-INFRINGEMENT OF THIRD PARTY INTELLECTUAL PROPERTY RIGHTS.

These resources are intended for skilled developers designing with TI products. You are solely responsible for (1) selecting the appropriate TI products for your application, (2) designing, validating and testing your application, and (3) ensuring your application meets applicable standards, and any other safety, security, regulatory or other requirements.

These resources are subject to change without notice. TI grants you permission to use these resources only for development of an application that uses the TI products described in the resource. Other reproduction and display of these resources is prohibited. No license is granted to any other TI intellectual property right or to any third party intellectual property right. TI disclaims responsibility for, and you will fully indemnify TI and its representatives against, any claims, damages, costs, losses, and liabilities arising out of your use of these resources.

TI's products are provided subject to [TI's Terms of Sale](#) or other applicable terms available either on [ti.com](https://www.ti.com) or provided in conjunction with such TI products. TI's provision of these resources does not expand or otherwise alter TI's applicable warranties or warranty disclaimers for TI products.

TI objects to and rejects any additional or different terms you may have proposed.

Mailing Address: Texas Instruments, Post Office Box 655303, Dallas, Texas 75265
Copyright © 2024, Texas Instruments Incorporated