

## DRV8876/74 Evaluation Module

---



---



---

This document is provided with the DRV887x family customer evaluation modules (EVM) as a supplement to the [DRV8876](#), [DRV8876-Q1](#), [DRV8874](#), and [DRV8874-Q1](#) datasheets. This user's guide describes the hardware implementation of the EVM.



### CAUTION

**Hot surface.** Contact may cause burns. Do not Touch.

DRV8876EVM and DRV8876-Q1EVM are rated for power supply voltages between 4.5 VDC and 37 VDC max. The components can support peak output currents up to a maximum of 3.5 ADC. To maintain component temperatures below the 130°C rating of the printed circuit board material, TI requires that the continuous current of both channels be limited to 1.7 ADC (each) when operating for extended periods of time at an ambient temperature of 25°C.

DRV8874EVM and DRV8874-Q1EVM are rated for power supply voltages between 4.5 VDC and 37 VDC max. The components can support peak output currents up to a maximum of 6 ADC. To maintain component temperatures below the 130°C rating of the printed circuit board material, TI requires that the continuous current of both channels be limited to 3.3 ADC (each) when operating for extended periods of time at an ambient temperature of 25°C.

### Contents

1	PCB (Top-Assembly View) .....	3
2	Introduction .....	3
3	Power Connectors .....	3
4	Test Points .....	4
5	PMODE Jumper and Speed-Adjustment Potentiometers .....	4
	5.1 PH/EN Control Mode (PMODE = Logic Low) .....	6
	5.2 PWM Control Mode (PMODE = Logic High) .....	7
	5.3 Independent Half-Bridge Control Mode (PMODE = Hi-Z) .....	8
6	Operation of the EVM .....	9
	6.1 Dual Motor Operation .....	9
	6.2 Single Motor Operation .....	9

### List of Figures

1	PCB (Top 3-D View).....	3
2	PMODE header and PWM Potentiometers .....	5
3	PMODE jumper configuration for PH/EN .....	6
4	PMODE jumper configuration for PWM.....	7
5	PMODE does not require a jumper for independant half-bridge mode .....	8

### List of Tables

1	PH/EN Control Mode .....	6
2	PWM Control Mode.....	7
3	Independent Half-Bridge Control Mode .....	8

**Trademarks**

MSP430, eZ-FET are trademarks of Texas Instruments.  
All other trademarks are the property of their respective owners.

## 1 PCB (Top-Assembly View)

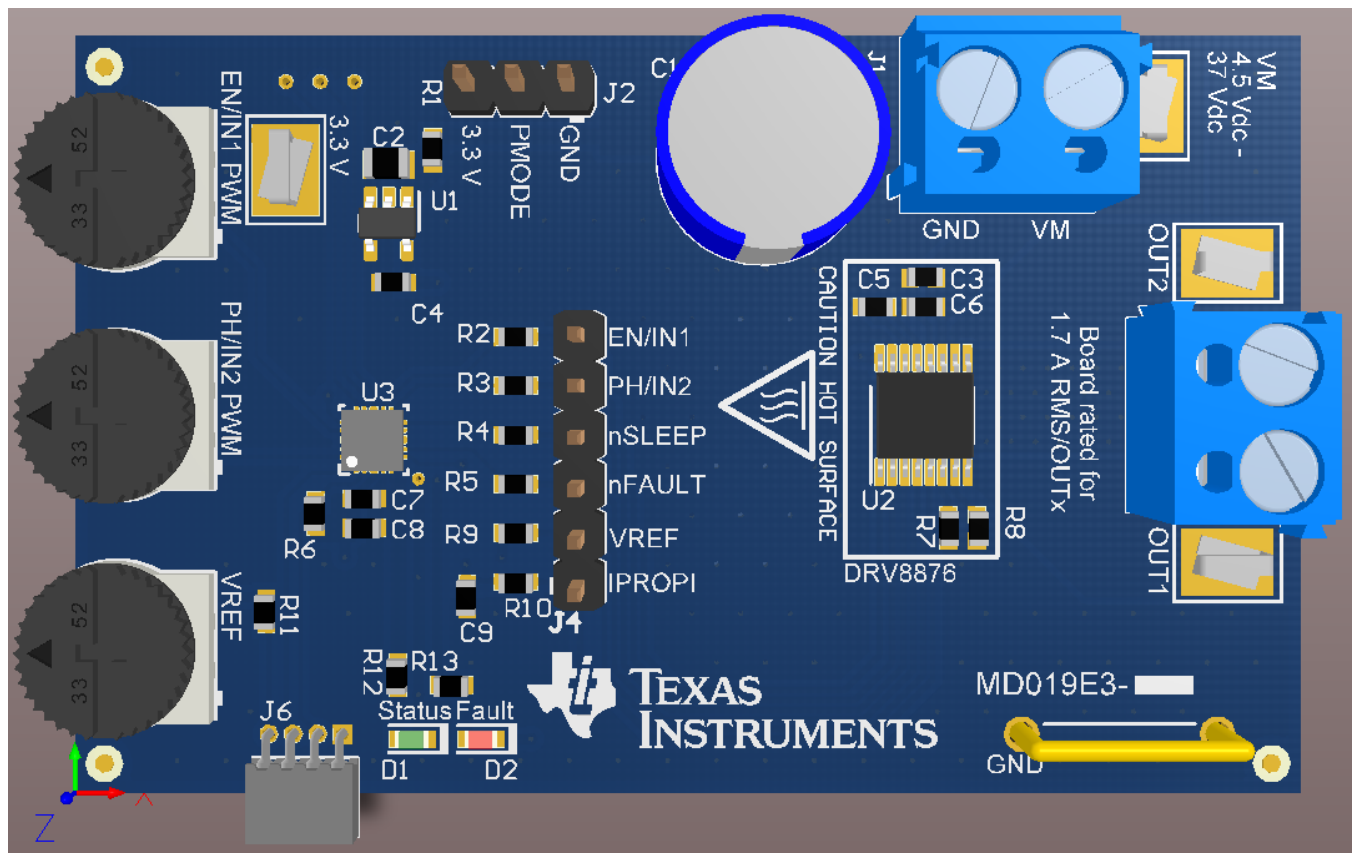


Figure 1. PCB (Top 3-D View)

## 2 Introduction

The DRV8876x/74xEVM is a complete solution for evaluating the DRV8876/74x H-bridge motor drivers. It includes an MSP430™ microcontroller that is preprogrammed to take input from two dedicated analog potentiometers for PWM speed control of one or two brushed DC motors. The jumper on the PMODE pin allows the user to select from the input modes of PH/EN (GND), PWM (3.3 V), and independent half-bridge control (Hi-Z). Power can be provided externally up to 37 V through the power header. To expand beyond the included firmware capability, the MSP430 MCU can be reprogrammed through the eZ-FET emulation circuit found in newer MSP430 Launchpads. We recommend the <http://www.ti.com/tool/MSP-EXP430FR5969>. Note that a four pin angled male header is required and must be soldered to J21 of this Launchpad from V+ pin to GND pin. We recommend a pin header with pin dimensions like 850-10-050-20-001000. The U1 MCU must be removed from the Launchpad.

---

**NOTE:** To test the DRV8876N functionality (no current sensing), replace R7 with a 0-Ohm resistor and set VREF to a voltage greater than 1 V. This will configure the DRV8876 to the same operation as the DRV8876N.

---

## 3 Power Connectors

The DRV8876/74xEVM uses a single header for power entry to the EVM board. Only a single power supply rail is necessary since an onboard 3.3-V regulator provides power to the MSP430. The minimum recommended VM voltage for the EVM is 4.5 V and the maximum is 37 V. For complete voltage range information of the driver itself, refer to the device.

As previously mentioned, the MSP430 comes preprogrammed to control basic DC motor operation. If changing the firmware via the external eZ-FET™ emulation tool, do not supply power to the VM connector on the EVM. The eZ-FET™ board provides the necessary power during programming when connected to the J6 connector. Note that a four pin angled male header is required and must be soldered to J21 of this Launchpad from V+ pin to GND pin. We recommend a pin header with pin dimensions like 850-10-050-20-001000. The U1 MCU must be removed from the Launchpad.

#### 4 Test Points

The inputs and control signals between the MCU and the DRV8876/74 connect to the J4 header pins to use as test points for EN/IN1, PH/IN2, nSLEEP, nFAULT, VREF, and IPROPI signals. The resistors next to the headers (R2, R3, R4, R6, R10, and R11) can be removed to test the DRV8876/74 with external signals rather than the signals from the MCU. The MCU provides logic output signals to the EN/IN1, PH/IN2, and nSLEEP pins between 0 V and 3.3 V. The nFAULT signal pulls low during a fault condition from the DRV8876/74. When nFAULT is low, the Fault LED, D2, will turn on. The VREF potentiometer sets a reference voltage between 0 V and 3.3 V. The IPROPI signal voltage will be proportional to the current out of the IPROPI pin. On the EVM, the  $R_{IPROPI}$  resistor (R8) is 1.5 k $\Omega$ . For more information on IPROPI, refer to the [DRV8876](#) and [DRV8876-Q1](#) datasheets.

#### 5 PMODE Jumper and Speed-Adjustment Potentiometers

The PMODE header and jumper allow the user to select from the input modes of PH/EN (GND), PWM (3.3 V), and independent half-bridge control (Hi-Z). PMODE must be selected prior to powering the EVM. The inputs to the DRV8876/74 are EN/IN1 and PH/IN2. The function of these inputs are IN1 and IN2 when the PMODE is 3.3 V (PWM mode) or Hi-Z (independent half-bridge mode). When PMODE is connected to ground (PH/EN control mode) the input function is a phase/enable (PH/EN) interface.

The MSP430 produces PWM signals for the EN/IN1 and PH/IN2 pins with duty cycles proportional to the voltage from the PWM potentiometers. The tables below show how to configure the potentiometers for each PMODE configuration.

---

**NOTE:** When switching between modes, completely power down the board before changing the PMODE jumper. Once powered down, turn both potentiometers completely counterclockwise so motor does not start turning immediately when the board is powered. After moving the PMODE jumper and setting the potentiometers, power up the board again to use the new mode.

---

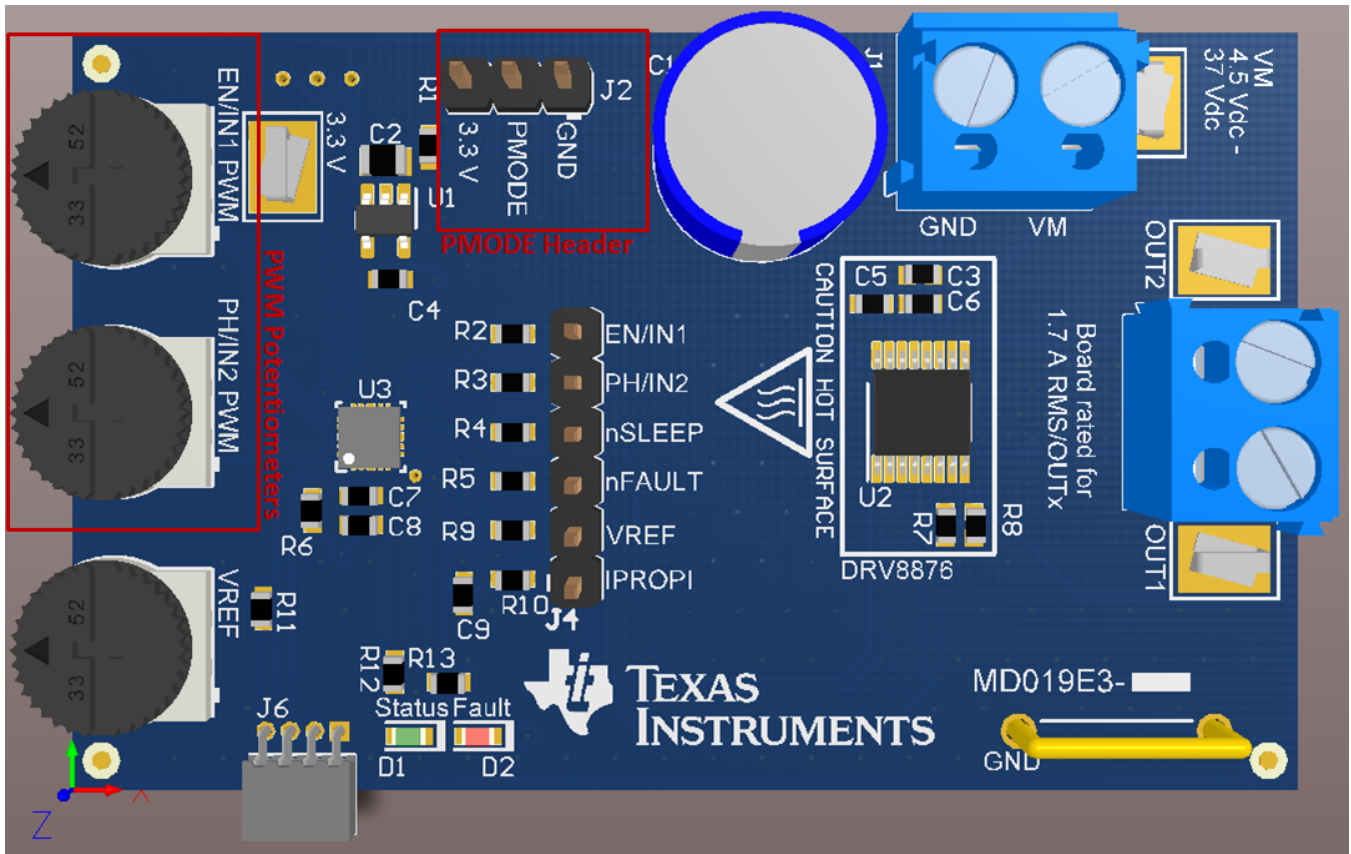


Figure 2. PMODE header and PWM Potentiometers

### 5.1 PH/EN Control Mode (PMODE = Logic Low)

When the PMODE pin is logic low on power up, the device latches into PH/EN mode (Figure 3). PH/EN mode allows for the H-bridge to be controlled with a speed and direction type of interface. The truth table for PH/EN mode is shown in Table 1. This method is best for bidirectional driving for one motor.

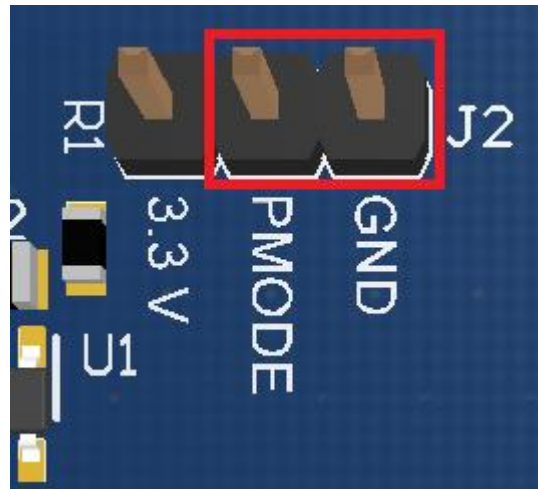


Figure 3. PMODE jumper configuration for PH/EN

Table 1. PH/EN Control Mode

EN	PH	OUT1	OUT2	DESCRIPTION
LOW - turn IN1 PWM Pot completely counterclock wise	X	L	L	Brake, (Low-Side Slow Decay)
PWM - set IN1 PWM pot in any position	LOW - turn IN2 PWM completely counterclock wise	L	H	Reverse (OUT2 → OUT1)
PWM - set IN1 PWM pot in any position	HIGH - turn IN2 PWM completely clockwise	H	L	Forward (OUT1 → OUT2)

## 5.2 PWM Control Mode (PMODE = Logic High)

When the PMODE pin is logic high on power up, the device latches into PWM mode (Figure 4). PWM mode allows for the H-bridge to enter the Hi-Z state without taking the nSLEEP pin logic low. The truth table for PWM mode is shown in Table 2. This method is best for bidirectional driving for one motor.

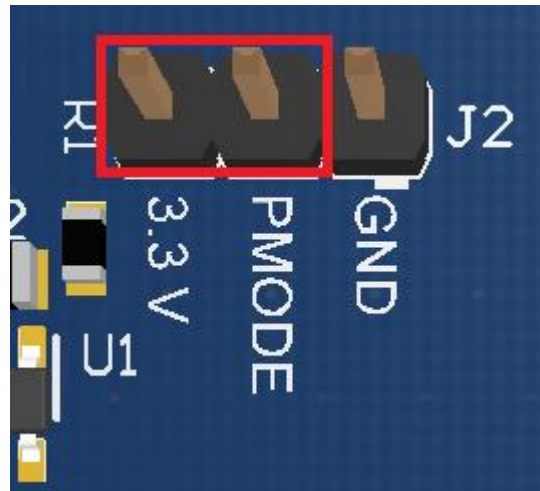


Figure 4. PMODE jumper configuration for PWM

Table 2. PWM Control Mode

IN1	IN2	OUT1	OUT2	DESCRIPTION
LOW - turn IN1 PWM completely counterclock wise	LOW - turn IN2 PWM completely counterclock wise	Hi-Z	Hi-Z	Coast, (H-Bridge Hi-Z)
LOW - turn IN1 PWM completely counterclock wise	PWM - set IN2 PWM pot in any position	L	H	Reverse (OUT2 → OUT1)
PWM - set IN1 PWM pot in any position	LOW - turn IN2 PWM completely counterclock wise	H	L	Forward (OUT1 → OUT2)
HIGH - turn IN1 PWM completely clockwise	HIGH - turn IN2 PWM completely clockwise	L	L	Brake, (Low-Side Slow Decay)

### 5.3 Independent Half-Bridge Control Mode (PMODE = Hi-Z)

When the PMODE pin is Hi-Z on power up, the device is latched into independent half-bridge control mode. This mode allows for each half-bridge to be directly controlled in order to support high-side slow decay or driving two independent loads. The truth table for independent half-bridge mode is shown in [Table 3](#).

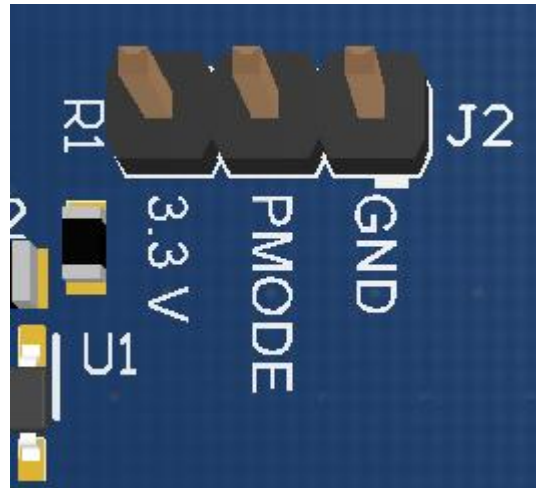


Figure 5. PMODE does not require a jumper for independent half-bridge mode

Table 3. Independent Half-Bridge Control Mode

INx	OUTx	DESCRIPTION
LOW - turn INx PWM completely counterclockwise	L	OUTx Low-Side On
PWM - set IN1 PWM pot in any position	H or PWM	OUTx High-Side On



## 6 Operation of the EVM

### 6.1 Dual Motor Operation

This mode allows for up to two motors to be controlled independently. Connect a DC motor across OUT1 and GND. If desired, connect an additional DC motor across OUT2 and GND. To reverse motor direction of one of the motors, replace the connection from that motor to GND with a connection from that motor to VM. This can be done with both motors if desired.

Use the following steps to operate the EVM with up to two motors with single direction speed control:

1. Connect a DC motor across OUT1 and GND. If desired, connect an additional DC motor across OUT2 and GND.
2. Adjust the potentiometer, IN1 PWM, to minimum voltage by turning the wheel counter-clockwise all the way. This minimizes the motor speed of the motor connected across OUT1. If using a second motor, perform this process with potentiometer IN2 PWM as well.
3. Remove the jumper from the PMODE header so the PMODE pin is Hi-Z.
4. Apply power to J1 header
5. Turn potentiometer, IN1 PWM, clockwise and the motor connected across OUT1 starts to turn. Continue adjusting, as desired, until the maximum speed is reached. If using a second motor perform this process with potentiometer IN2 PWM as well.
6. The direction of the motor turning can be reversed, if desired, by removing the connection from GND to the motor and connecting the motor to VM. If this is done, the potentiometer associated with controlling the motor will operate in reverse and thus should be turned all the way clockwise before powering on the board and then slowly turned counter-clockwise to speed up the motor.

### 6.2 Single Motor Operation

This mode allows for bidirectional control of one motor. Connect a DC motor across OUT1 and OUT2. Reversing direction is now controlled by the potentiometer. This is described in detail in [Section 6.2](#).

Use the following steps to operate the EVM with a signal motor and bidirectional speed control:

1. Connect a motor across OUT1 and OUT2.
2. Use a jumper to connect the PMODE header to 3.3 V or GND to set the input mode to PWM control mode or PH/EN mode respectively.
3. Adjust both potentiometers, IN1 PWM and IN2 PWM, according to the table of the corresponding PMODE setting in [Section 5.1](#).
4. Apply power to J1 header.
5. Control the motor direction and speed by adjusting the potentiometers according to the tables in [Section 5.1](#).

## IMPORTANT NOTICE AND DISCLAIMER

TI PROVIDES TECHNICAL AND RELIABILITY DATA (INCLUDING DATA SHEETS), DESIGN RESOURCES (INCLUDING REFERENCE DESIGNS), APPLICATION OR OTHER DESIGN ADVICE, WEB TOOLS, SAFETY INFORMATION, AND OTHER RESOURCES "AS IS" AND WITH ALL FAULTS, AND DISCLAIMS ALL WARRANTIES, EXPRESS AND IMPLIED, INCLUDING WITHOUT LIMITATION ANY IMPLIED WARRANTIES OF MERCHANTABILITY, FITNESS FOR A PARTICULAR PURPOSE OR NON-INFRINGEMENT OF THIRD PARTY INTELLECTUAL PROPERTY RIGHTS.

These resources are intended for skilled developers designing with TI products. You are solely responsible for (1) selecting the appropriate TI products for your application, (2) designing, validating and testing your application, and (3) ensuring your application meets applicable standards, and any other safety, security, regulatory or other requirements.

These resources are subject to change without notice. TI grants you permission to use these resources only for development of an application that uses the TI products described in the resource. Other reproduction and display of these resources is prohibited. No license is granted to any other TI intellectual property right or to any third party intellectual property right. TI disclaims responsibility for, and you will fully indemnify TI and its representatives against, any claims, damages, costs, losses, and liabilities arising out of your use of these resources.

TI's products are provided subject to [TI's Terms of Sale](#) or other applicable terms available either on [ti.com](http://ti.com) or provided in conjunction with such TI products. TI's provision of these resources does not expand or otherwise alter TI's applicable warranties or warranty disclaimers for TI products.

TI objects to and rejects any additional or different terms you may have proposed.

Mailing Address: Texas Instruments, Post Office Box 655303, Dallas, Texas 75265  
Copyright © 2022, Texas Instruments Incorporated