

TPS7A74EVM-068 Evaluation Module

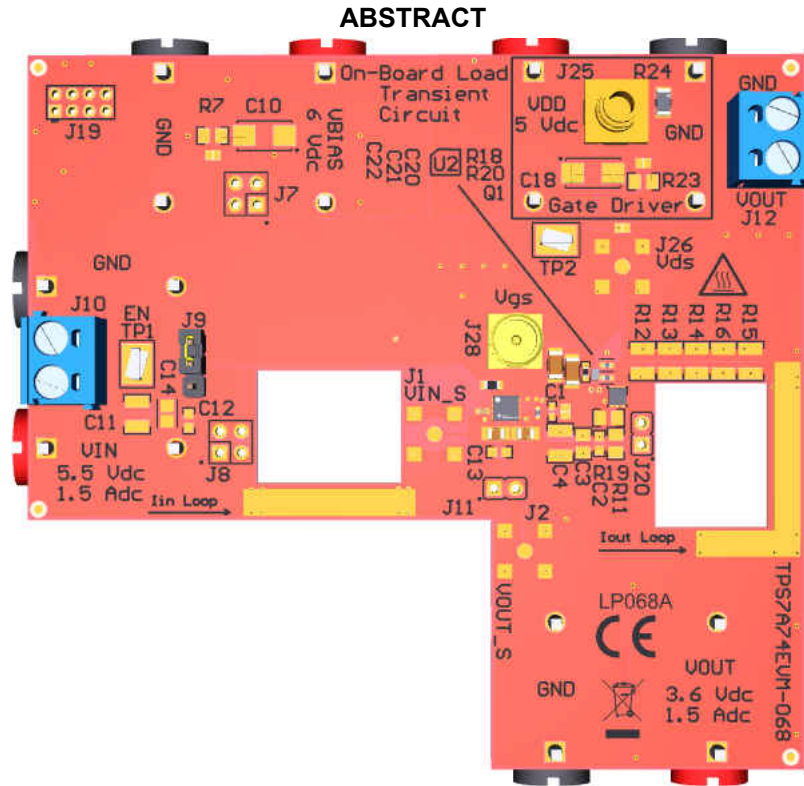


Figure 1-1. TPS7A74EVM-068 Evaluation Module

This user's guide describes the operational use of the TPS7A74EVM-068 evaluation module (EVM) as a reference design for engineering demonstration and evaluation of the TPS7A74 low-dropout linear regulator (LDO). Included in this user's guide are setup and operating instructions, thermal and layout guidelines, a printed-circuit board (PCB) layout, a schematic diagram, and a bill of materials (BOM).

Throughout this document, the terms *evaluation board*, *evaluation module*, and *EVM* are synonymous with the TPS7A74EVM-068.

Table of Contents

1 Introduction	3
2 Setup	3
2.1 LDO Input/Output Connector Descriptions.....	3
2.2 Optional Load Transient Input/Output Connector Descriptions.....	4
2.3 TPS7A74 LDO Operation and Component Selection.....	4
2.4 Optional Load Transient Circuit Operation.....	6
3 Board Layout	8
4 TPS7A74EVM Schematic	10
5 Bill of Materials	11

List of Figures

Figure 1-1. TPS7A74EVM-068 Evaluation Module.....	1
Figure 2-1. TPS7A74EVM-068 Turn-On.....	5
Figure 2-2. TPS7A74EVM-068 With Current Probes Attached.....	5
Figure 2-3. TPS7A74EVM-068 Load Transient Results: 50- μ A to 1.42-A Load Step.....	7
Figure 2-4. TPS7A74EVM-068 Load Transient Results: 1.42-A to 50- μ A Load Step.....	7
Figure 3-1. Top Assembly Layer and Silk Screen.....	8
Figure 3-2. Top Layer Routing.....	8
Figure 3-3. Layer 2.....	8
Figure 3-4. Layer 3.....	8
Figure 3-5. Layer 4.....	9
Figure 3-6. Layer 5.....	9
Figure 3-7. Bottom Layer Routing.....	9
Figure 3-8. Bottom Assembly Layer and Silk Screen.....	9
Figure 4-1. Schematic.....	10

Trademarks

LeCroy™ is a trademark of Teledyne LeCroy.

Kapton® is a registered trademark of DuPont.

All trademarks are the property of their respective owners.

1 Introduction

The Texas Instruments TPS7A74EVM-068 evaluation module (EVM) helps designers evaluate the operation and performance of the TPS7A74 LDO voltage regulator. As shown in [Table 1-1](#), the TPS7A74EVM-068 contains one TPS7A74 LDO voltage regulator in the DSD package. An optional load transient circuit is also included to assist the user with high-speed load transient testing. To simplify current measurements, an input current loop is included.

Table 1-1. Device Information

EVM ORDERABLE NUMBER	V _{OUT}	PART NAME	PACKAGE
TPS7A74EVM-068	Adjustable	TPS7A7401DSDR	8-pin DSD

2 Setup

This section describes the jumpers and connectors on the EVM, and how to properly connect, set up, and use the TPS7A74EVM-068. [Section 2.1](#) and [Section 2.3](#) describe the test setup and operation for the TPS7A74 LDO. [Section 2.2](#) and [Section 2.4](#) describe the test setup and operation of the optional load transient circuit.

2.1 LDO Input/Output Connector Descriptions

2.1.1 VIN and GND

VIN and GND are the connection terminals for the input supply. The VIN terminal is the positive connection, and the GND terminal is the negative (that is, ground) connection.

2.1.2 BIAS and GND

BIAS and GND are the connection terminals for the bias supply. The BIAS terminal is the positive connection, and the GND terminal is the negative (that is, ground) connection.

2.1.3 VOUT and GND

VOUT and GND are the connection terminals for the output load. The VOUT terminal is the positive connection, and the GND terminal is the negative (that is, ground) connection.

2.1.4 EN

EN is a 3-pin header used to enable or disable the TPS7A74.

The center pin of the 3-pin header is tied to the TPS7A74 EN input. When the 2-pin shunt is placed across the top two pins of the header, VIN is shorted to EN and the TPS7A74 is enabled. When the 2-pin shunt is placed across the bottom two pins of the header, GND is shorted to EN and the TPS7A74 is disabled.

When driving the EN terminal with an off-board supply or signal generator, the applied voltage must be kept between 0 V and 5.5 V.

2.2 Optional Load Transient Input/Output Connector Descriptions

2.2.1 VDD and GND

VDD and GND are the connection terminals for the input supply of the load transient circuit. The VDD terminal is the positive connection, and the GND terminal is the negative (that is, ground) connection.

2.2.2 J20

J20 is an optional connection for the user to make measurements or apply loads to the output of the LDO.

2.2.3 J22

J22 is an optional connection to insert a damping circuit across the load transient MOSFET drain to source voltage.

2.2.4 J23

J23 is an optional connection to insert capacitance or additional load across the drain to source of the load transient MOSFET.

2.2.5 J25

J25 is the connection for the function generator to drive the gate driver device. J25 is terminated by the 50- Ω resistor, R24.

2.2.6 J26

J26 is a high-frequency kelvin connection that allows accurate measurements of the load transient MOSFET drain to source voltage.

2.2.7 J28

J28 is a high-frequency kelvin connection that allows accurate measurements of the load transient MOSFET gate to source voltage.

2.2.8 TP2

TP2 is the test point used to enable the gate driver device. Tie this pin to GND to enable the gate driver.

2.3 TPS7A74 LDO Operation and Component Selection

The TPS7A74EVM-068 evaluation module contains the TPS7A74 LDO with input, bias, soft-start, and output capacitors installed, as well as feedback resistors installed. These seven components provide an implementation example, as illustrated by the white boxes in [Figure 2-2](#). The prepopulated capacitors are sized to ensure the minimum capacitance requirements are maintained under all normal operating conditions. Optional pads are available to test the LDO with additional setpoint options, as well as input, bias, and output capacitors beyond what is already installed on the EVM.

Setpoint resistors are prepopulated on the TPS7A74EVM-068 to provide an output voltage of 1 V, 1.2 V, 1.5 V, 1.8 V, or 3.3 V. Select one of these output voltages by using the provided shunt to short the necessary pin on header J16. If 0.65 V is desired on VOUT, remove the shunt from J16 and short J6. For other voltage options, resistor R10 can be populated and R1 modified as necessary. See the *Application and Implementation* section in the TPS7A74 data sheet for guidance on selecting R10 and R1 for alternate values of VOUT.

The TPS7A74 LDO can be enabled or disabled by using the J9 3-pin header:

- Place a 2-pin shunt across the header to tie VIN to EN to enable the device
- Place a 2-pin shunt across the header to tie GND to EN to disable the device

Alternatively, by connecting an external function generator to TP1 (EN) and a nearby GND post (J17), the user can enable or disable the TPS7A74 LDO after VIN is applied. [Figure 2-1](#) illustrates the result of the TPS7A74EVM-068 during turn-on. The blue trace is the enable voltage, the green trace is the output voltage, and the red trace is the load current.

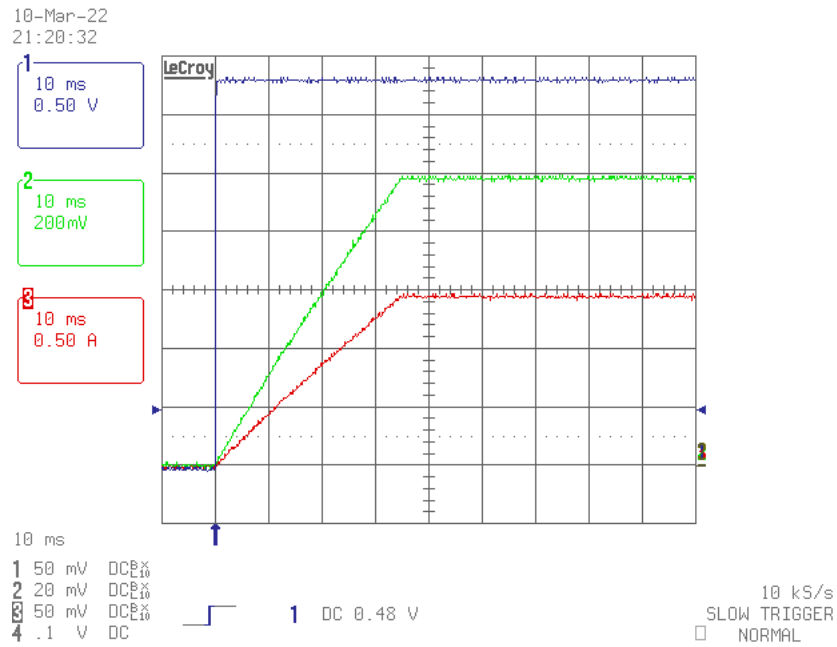


Figure 2-1. TPS7A74EVM-068 Turn-On

If desired, a current probe can be inserted in the EVM as shown in [Figure 2-2](#) to measure the input and output current. The slots were sized to fit most current probes, such as the LeCroy™ AP015 or CP031 current probes.

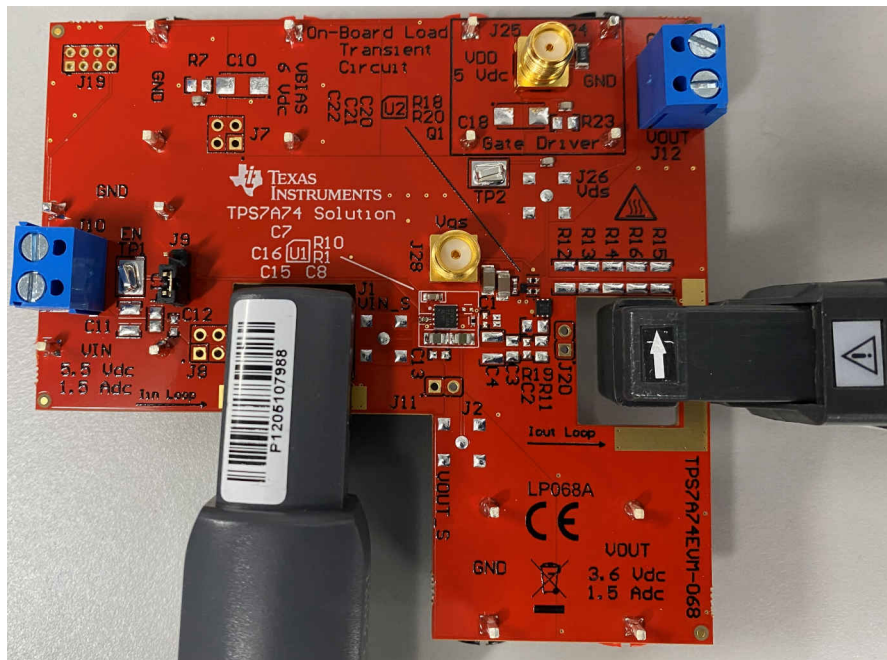


Figure 2-2. TPS7A74EVM-068 With Current Probes Attached

The user has two options for providing a DC load on the output of the TPS7A74. J12 can be used to place a DC load that flows through the current sense path on the output of the LDO. Alternatively, the J4 (VOUT) and J18 (GND) banana connectors can be used for external measurements and loading; however, the IOUT loop does not sense current flowing through these connectors. In cases where very fast transient tests are performed, ringing may occur on VIN or VOUT as a result of the PCB parasitic inductance. Placing a strip of wire on the exposed copper in the current path can reduce this ringing. 10 AWG wire can be used as needed. If ringing persists, install damping networks by adding a series resistor and capacitor in parallel with VIN. Locations where damping can be installed include C5 and R8, C6 and R9, C10 and R7, and C18 and R23.

WARNING

Current probe sensors can be tied to GND and must not come into contact with energized conductors. See the user manual of your current probe for details. If your current probe has this limitation, use a thin strip of electrical or Kapton® tape to isolate the current sense path from the current probe.

Optional kelvin sense points are provided using the SMA connectors J1 (VIN) and J2 (VOUT).

2.4 Optional Load Transient Circuit Operation

The TPS7A74EVM-068 evaluation module contains an optional high-performance load transient circuit to allow efficient testing of the TPS7A74 LDO load transient performance. To use the optional load transient circuit, install the correct components in accordance with the application. Modify the input and output capacitance connected to the TPS7A74 LDO to match the expected operating conditions. Determine the desired peak current to test, and modify the parallel resistor combination of R12, R13, R14, R15, and R16 as shown:

$$I_{Peak} = \frac{V_{OUT}}{R_{12} || R_{13} || R_{14} || R_{15} || R_{16}} \quad (1)$$

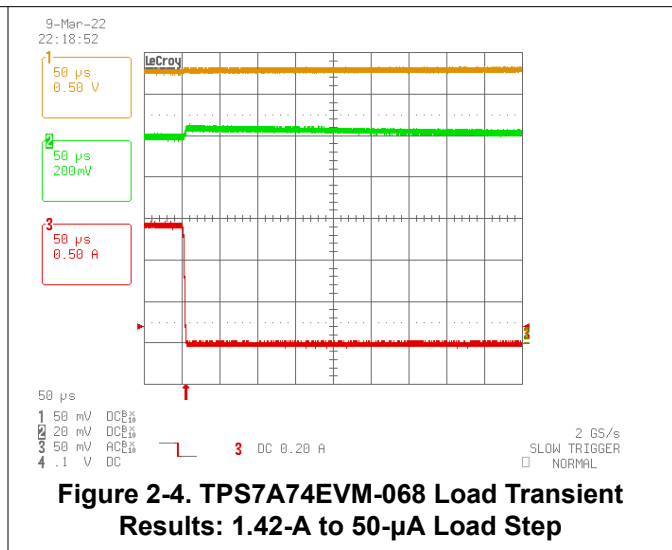
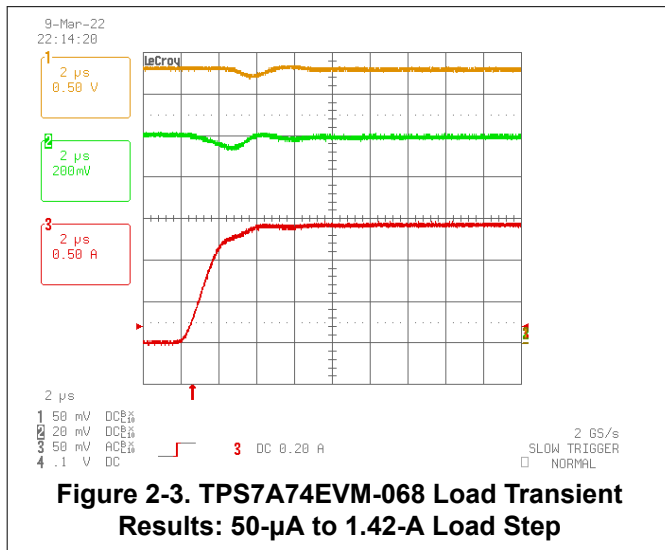
The slew rate of the load step can be adjusted by C17, R17, R18, and R20. In this section, only R18 and R20 are adjusted to set the slew rate. For a 0-mA to 1.5-A to 0-mA load step, use [Table 2-1](#) to select a value of R18 and R20 that results in the desired rise or fall time.

Table 2-1. Suggested Ramp Rate Resistor Values

R18	R20	Rise, Fall Time
90.9 kΩ	97.6 kΩ	12 μs
44.2 kΩ	47.5 kΩ	6 μs
28 kΩ	23.2 kΩ	3 μs
14 kΩ	12.1 kΩ	1.5 μs
6.65 kΩ	5.9 kΩ	750 ns
3.24 kΩ	2.49 kΩ	300 ns
1.43 kΩ	1.21 kΩ	150 ns

After the EVM is modified (if needed), connect a power supply to banana connectors J24 (VDD) and J30 (GND) with a 5-V DC supply and a 1-A DC current limit. As illustrated in [Figure 2-3](#) and [Figure 2-4](#), the TPS7A74 transient response is very fast and the output voltage recovers in well under 1 ms after the initial load transient. Use a pulse-duration limit of 1 ms to prevent excessive heating of the pulsed resistors (R12, R13, R14, R15, and R16). Configure a function generator for the 50-Ω output, in a 0-V DC to 5-V DC square pulse. If necessary, burst mode can be configured in the function generator for repetitive, low duty cycle, load transient testing.

Use J16 to short R2 to GND and configure VOUT to be 1-V DC. The series combination of R1 and R2 provide 50-μA of DC load current. A 20-kΩ resistor is installed on the EVM at R18, and a 20-kΩ resistor is installed on the EVM at R20. These resistors provide approximately 0.75-A/μs slew rate from 0 mA to 1.5 A, and 0.5-A/μs slew rate from 1.5 A to 0 mA. [Figure 2-3](#) and [Figure 2-4](#) provide example test data with R18 = 20 kΩ and R20 = 20 kΩ. The orange trace is the input voltage, the green trace is the output voltage, and the red trace is the output current. R12, R13, R14, R15, and R16 provide 1.42 A of pulsed load. The resulting test data shows a 50-μA to 1.42-A load step on VOUT of the LDO, with only a 47-μF capacitor on the output of the LDO.



3 Board Layout

Figure 3-1 through Figure 3-8 illustrate the board layout for the TPS7A74EVM-068 PCB.

The TPS7A74EVM-068 dissipates power, which may cause some components to experience an increase in temperature. The TPS7A74 LDO and pulsed resistors R12, R13, R14, R15, and R16 are most at risk of raising the junction temperature during normal operation. The LDO may become hot to the touch during normal operation, see the thermal impedance discussion in the TPS7A74 data sheet.

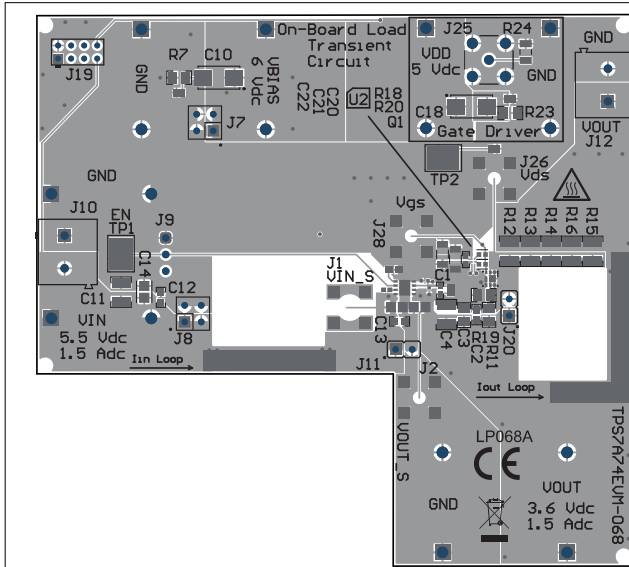


Figure 3-1. Top Assembly Layer and Silk Screen

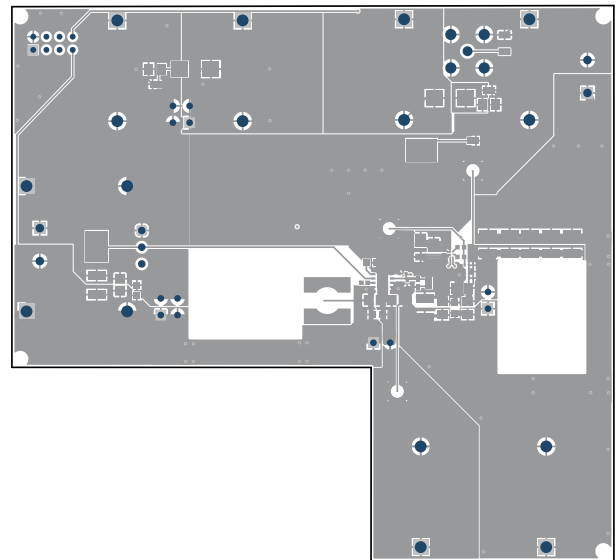


Figure 3-2. Top Layer Routing

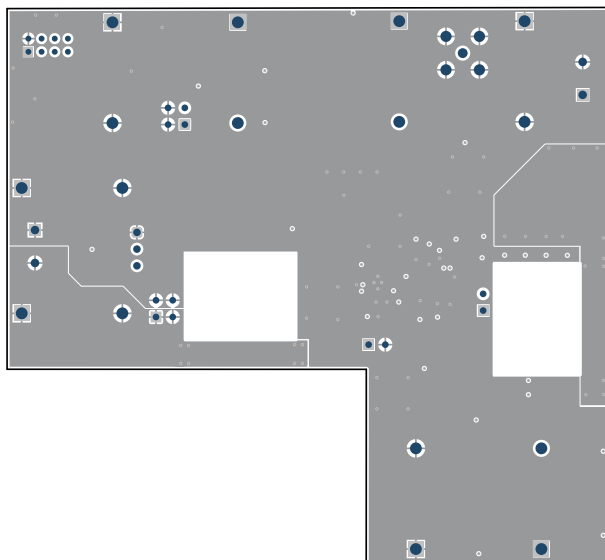


Figure 3-3. Layer 2

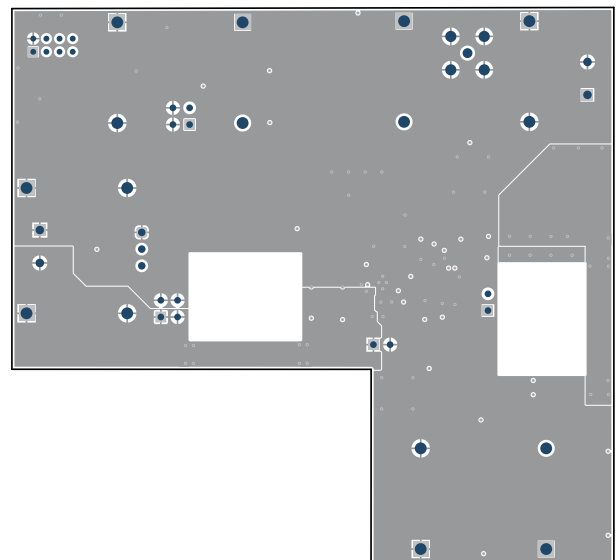


Figure 3-4. Layer 3

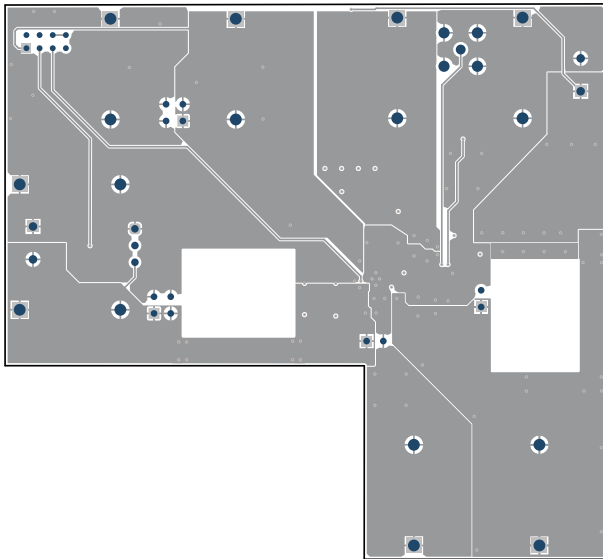


Figure 3-5. Layer 4

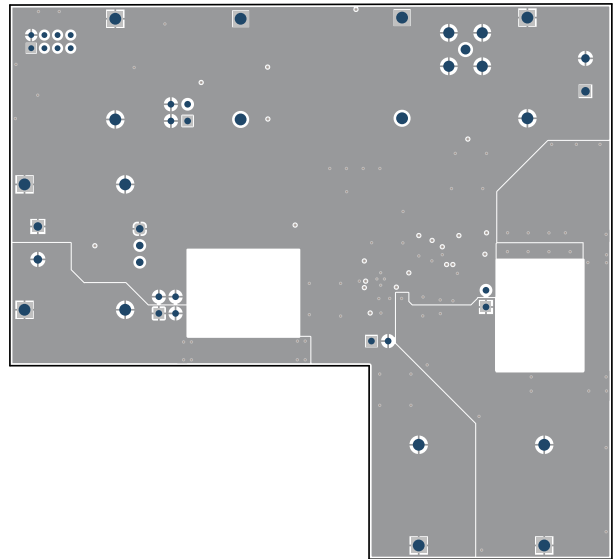


Figure 3-6. Layer 5

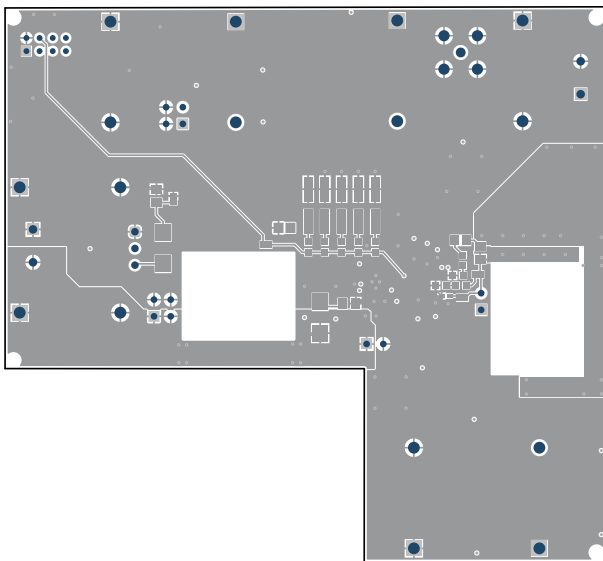


Figure 3-7. Bottom Layer Routing

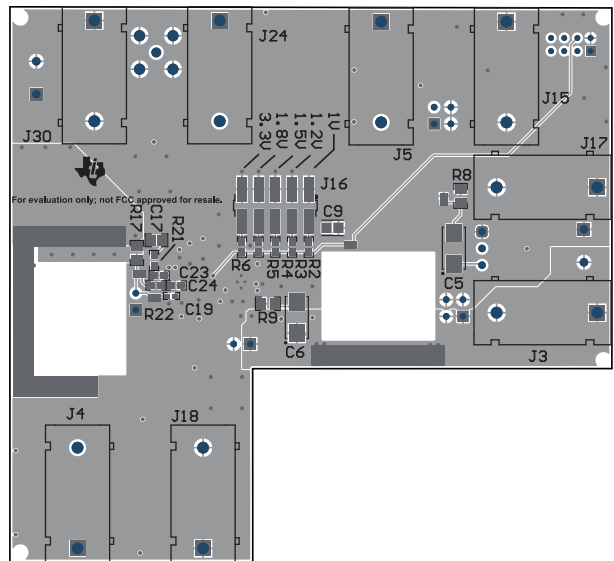


Figure 3-8. Bottom Assembly Layer and Silk Screen

4 TPS7A74EVM Schematic

Figure 4-1 shows a schematic for the TPS7A74EVM-068.

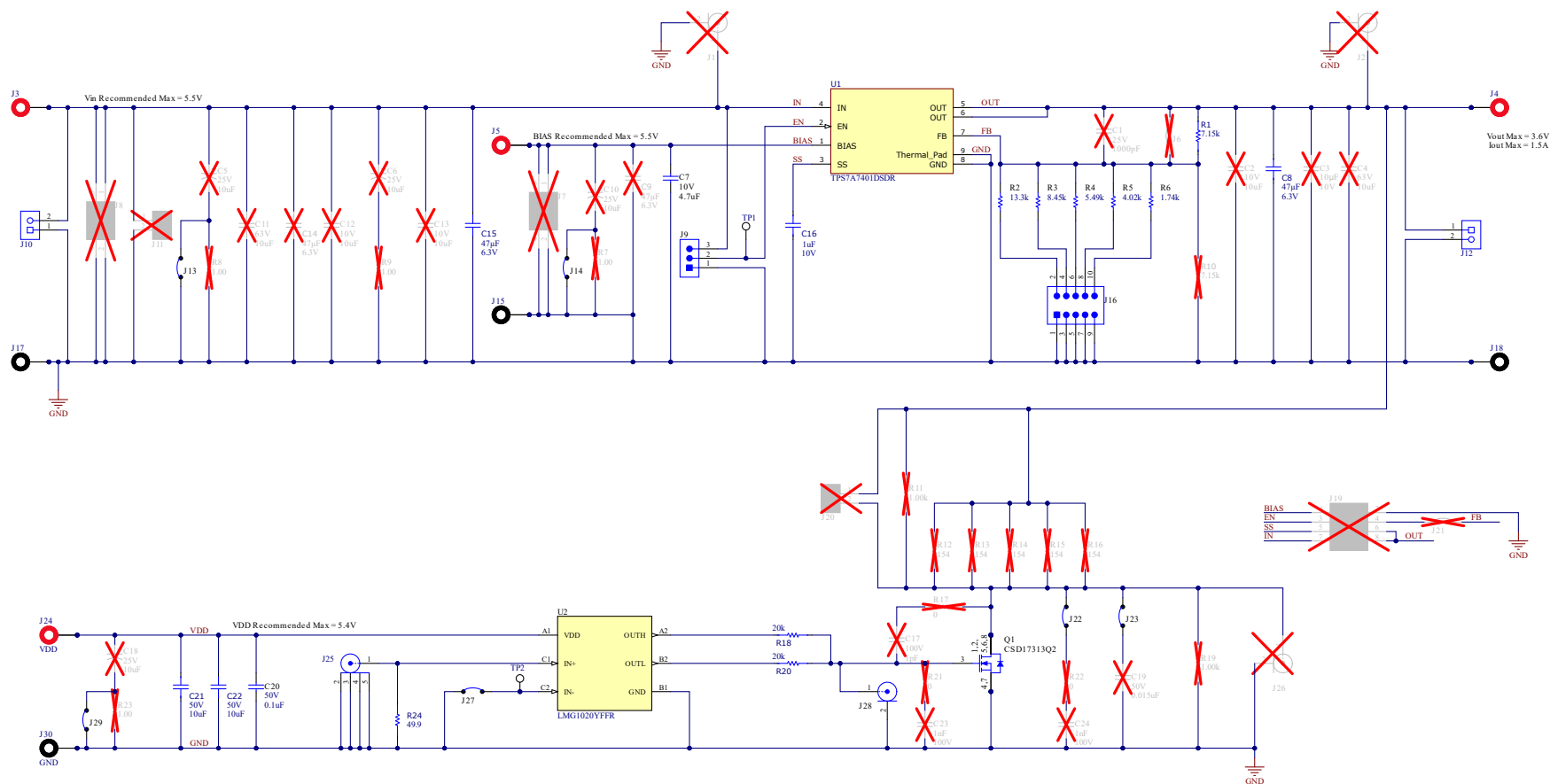


Figure 4-1. Schematic

5 Bill of Materials

Table 5-1 shows the bill of materials for the TPS7A74EVM-068.

Table 5-1. Bill of Materials

Designator	Quantity	Value	Description	PackageReference	PartNumber	Manufacturer	Alternate PartNumber	Alternate Manufacturer
!PCB1	1		Printed Circuit Board		LP068	Any		
C7	1	4.7uF	CAP, CERM, 4.7 uF, 10 V, +/- 10%, X5R, 0603	603	C0603C475K8PAC TU	Kemet		
C8, C15	2	47µF	47 µF ±20% 6.3V Ceramic Capacitor X5R 0805 (2012 Metric)	805	08056D476MAT2A	KYOCERA AVX		
C16	1	1µF	1µF ±10% 10V Ceramic Capacitor X7R 0402 (1005 Metric)	402	GMC04X7R105K10 NT	Cal-Chip Electronics		
C20	1	0.1uF	CAP, CERM, 0.1 uF, 50 V, +/- 10%, X7R, 0402	402	C1005X7R1H104K0 50BB	TDK		
C21, C22	2	10µF	10 µF ±10% 50V Ceramic Capacitor X7R 1206 (3216 Metric)	1206	GMC31X7R106K50 NT	Cal-Chip Electronics		
FID1, FID2, FID3, FID4, FID8	5		Fiducial mark. There is nothing to buy or mount.	N/A	N/A	N/A		
J3, J4, J5, J24	4		Standard Banana Jack, insulated, 10A, red	571-0500	571-0500	DEM Manufacturing		
J9	1		Header, 2.54 mm, 3x1, Gold, TH	Header, 2.54mm, 3x1, TH	61300311121	Würth Elektronik		
J10, J12	2		Terminal Block, 5 mm, 2x1, Tin, TH	Terminal Block, 5 mm, 2x1, TH	691 101 710 002	Würth Elektronik		
J13, J14, J22, J23, J27, J29	6		Jumper, SMT	shorting jumper, SMT	JMP-36-30X40SMT	Any		
J15, J17, J18, J30	4		Standard Banana Jack, insulated, 10A, black	571-0100	571-0100	DEM Manufacturing		
J16	1		Header, 2.54mm, 5x2, Gold, SMT	Header, 2.54mm, 5x2, SMT	TSM-105-01-L-DV	Samtec		
J25	1		SMA Straight Jack, Gold, 50 Ohm, TH	SMA Straight Jack, TH	901-144-8RFX	Amphenol RF		
J28	1		Connector, SMA Jack, Vertical, Gold, SMD	SMA	142-0711-201	Cinch Connectivity		
Q1	1	30V	MOSFET, N-CH, 30 V, 5 A, DQK0006C (WSON-6)	DQK0006C	CSD17313Q2	Texas Instruments		None
R1	1	7.15k	7.15 kOhms ±1% 0.1W, 1/10W Chip Resistor 0402 (1005 Metric) Automotive AEC-Q200 Thick Film	402	ERJ-2RKF7151X	Panasonic		
R2	1	13.3k	RES, 13.3 k, 1%, 0.1 W, 0603	603	RC0603FR-0713K3 L	Yageo		
R3	1	8.45k	RES, 8.45 k, 1%, 0.1 W, 0603	603	RC0603FR-078K45 L	Yageo		
R4	1	5.49k	RES, 5.49 k, 1%, 0.1 W, 0603	603	RC0603FR-075K49 L	Yageo		

Table 5-1. Bill of Materials (continued)

Designator	Quantity	Value	Description	PackageReference	PartNumber	Manufacturer	Alternate PartNumber	Alternate Manufacturer
R5	1	4.02k	RES, 4.02 k, 1%, 0.1 W, 0603	603	RC0603FR-074K02L	Yageo		
R6	1	1.74k	RES, 1.74 k, 1%, 0.1 W, 0603	603	RC0603FR-071K74L	Yageo		
R18, R20	2	20k	20 kOhms \pm 1% 0.1W, 1/10W Chip Resistor 0402 (1005 Metric) Automotive AEC-Q200 Thick Film	402	ERJ-2RKF2002X	Panasonic		
R24	1	49.9	RES Thick Film, 49.9 Ω , 1%, 0.75W, 100ppm/ $^{\circ}$ C, 1206	1206	CRCW120649R9FKEAHP	Vishay Dale		
SH-J1, SH-J2	2	1x2	Shunt, 100mil, Gold plated, Black	Shunt	SNT-100-BK-G	Samtec	969102-0000-DA	3M
TP1, TP2	2		Test Point, Compact, SMT	Testpoint_Keystone_Compact	5016	Keystone		
U1	1		1.5-A Low-Dropout Linear Regulator With Programmable Soft-Start	WSON8	TPS7A7401DSDR	Texas Instruments		
U2	1		5V, 7A/5A Low Side GaN Driver With 60MHz/1ns Speed, YFF0006AEAE (DSBGA-6)	YFF0006AEAE	LMG1020YFFR	Texas Instruments	LMG1020YFFT	Texas Instruments
C1	0	1000pF	CAP, CERM, 1000 pF, 25 V, +/- 5%, X7R, 0402	402	C0402C102J3RAC TU	Kemet		
C2, C12, C13	0	10uF	CAP, CERM, 10 uF, 10 V, +/- 20%, X5R, 0603	603	GRM188R61A106MAALD	MuRata		
C3	0	10uF	CAP, CERM, 10 uF, 10 V, +/- 20%, X7R, 0805	805	C2012X7R1A106M125AC	TDK		
C4, C11	0	10uF	CAP, CERM, 10 uF, 63 V, +/- 10%, X7R, 1210	1210	GRM32ER71J106KA12L	MuRata		
C5, C6, C10, C18	0	10uF	CAP, TA, 10 uF, 25 V, +/- 20%, 0.5 ohm, SMD	6032-28	TPSC106M025R0500	AVX		
C9, C14	0	47 μ F	47 μ F \pm 20% 6.3V Ceramic Capacitor X5R 0805 (2012 Metric)	805	08056D476MAT2A	KYOCERA AVX		
C17	0	1pF	CAP, CERM, 1 pF, 100 V, +/- 5%, C0G/NP0, 0805	805	GQM2195C2A1R0CB01D	MuRata		
C19	0	0.015uF	CAP, CERM, 0.015 uF, 50 V, +/- 10%, X7R, 0402	402	GRM155R71H153KA12D	MuRata		
C23, C24	0	1000pF	CAP, CERM, 1000 pF, 100 V, +/- 5%, X7R, 0603	603	06031C102JAT2A	AVX		
FID5, FID6, FID7	0		Fiducial mark. There is nothing to buy or mount.	N/A	N/A	N/A		
J1, J2, J26	0		Connector, SMA Jack, Vertical, Gold, SMD	SMA	142-0711-201	Cinch Connectivity		
J6, J21	0		Jumper, SMT	shorting jumper, SMT	JMP-36-30X40SMT	Any		
J7, J8	0		Header, 100mil, 2x2, Gold, TH	2x2 Header	TSW-102-07-G-D	Samtec		

Table 5-1. Bill of Materials (continued)

Designator	Quantity	Value	Description	PackageReference	PartNumber	Manufacturer	Alternate PartNumber	Alternate Manufacturer
J11, J20	0		Header, 100mil, 2x1, Gold, TH	Sullins 100mil, 1x2, 230 mil above insulator	PBC02SAAN	Sullins Connector Solutions		
J19	0		Header, 2mm, 4x2, Tin, TH	Header, 2mm, 4x2, TH	TMM-104-01-T-D	Samtec		
R7, R8, R9, R23	0	1	RES, 1.00, 1%, 0.333 W, AEC-Q200 Grade 1, 0805	805	ERJ-6BQF1R0V	Panasonic		
R10	0	7.15k	7.15 kOhms \pm 1% 0.1W, 1/10W Chip Resistor 0402 (1005 Metric) Automotive AEC-Q200 Thick Film	402	ERJ-2RKF7151X	Panasonic		
R11, R19	0	1.00k	RES, 1.00 k, 1%, 0.125 W, AEC-Q200 Grade 0, 0805	805	ERJ-6ENF1001V	Panasonic		
R12, R13, R14, R15, R16	0	154	RES, 154, 1%, 0.5 W, 1210	1210	RC1210FR-07154R L	Yageo		
R17	0	0	RES, 0, 5%, 0.125 W, AEC-Q200 Grade 0, 0805	805	ERJ-6GEY0R00V	Panasonic		
R21, R22	0	0	RES, 0, 1%, 0.1 W, AEC-Q200 Grade 0, 0603	603	RMCF0603ZT0R00	Stackpole Electronics Inc		

STANDARD TERMS FOR EVALUATION MODULES

1. *Delivery:* TI delivers TI evaluation boards, kits, or modules, including any accompanying demonstration software, components, and/or documentation which may be provided together or separately (collectively, an "EVM" or "EVMs") to the User ("User") in accordance with the terms set forth herein. User's acceptance of the EVM is expressly subject to the following terms.
 - 1.1 EVMs are intended solely for product or software developers for use in a research and development setting to facilitate feasibility evaluation, experimentation, or scientific analysis of TI semiconductors products. EVMs have no direct function and are not finished products. EVMs shall not be directly or indirectly assembled as a part or subassembly in any finished product. For clarification, any software or software tools provided with the EVM ("Software") shall not be subject to the terms and conditions set forth herein but rather shall be subject to the applicable terms that accompany such Software
 - 1.2 EVMs are not intended for consumer or household use. EVMs may not be sold, sublicensed, leased, rented, loaned, assigned, or otherwise distributed for commercial purposes by Users, in whole or in part, or used in any finished product or production system.
2. *Limited Warranty and Related Remedies/Disclaimers:*
 - 2.1 These terms do not apply to Software. The warranty, if any, for Software is covered in the applicable Software License Agreement.
 - 2.2 TI warrants that the TI EVM will conform to TI's published specifications for ninety (90) days after the date TI delivers such EVM to User. Notwithstanding the foregoing, TI shall not be liable for a nonconforming EVM if (a) the nonconformity was caused by neglect, misuse or mistreatment by an entity other than TI, including improper installation or testing, or for any EVMs that have been altered or modified in any way by an entity other than TI, (b) the nonconformity resulted from User's design, specifications or instructions for such EVMs or improper system design, or (c) User has not paid on time. Testing and other quality control techniques are used to the extent TI deems necessary. TI does not test all parameters of each EVM. User's claims against TI under this Section 2 are void if User fails to notify TI of any apparent defects in the EVMs within ten (10) business days after delivery, or of any hidden defects with ten (10) business days after the defect has been detected.
 - 2.3 TI's sole liability shall be at its option to repair or replace EVMs that fail to conform to the warranty set forth above, or credit User's account for such EVM. TI's liability under this warranty shall be limited to EVMs that are returned during the warranty period to the address designated by TI and that are determined by TI not to conform to such warranty. If TI elects to repair or replace such EVM, TI shall have a reasonable time to repair such EVM or provide replacements. Repaired EVMs shall be warranted for the remainder of the original warranty period. Replaced EVMs shall be warranted for a new full ninety (90) day warranty period.

WARNING

Evaluation Kits are intended solely for use by technically qualified, professional electronics experts who are familiar with the dangers and application risks associated with handling electrical mechanical components, systems, and subsystems.

User shall operate the Evaluation Kit within TI's recommended guidelines and any applicable legal or environmental requirements as well as reasonable and customary safeguards. Failure to set up and/or operate the Evaluation Kit within TI's recommended guidelines may result in personal injury or death or property damage. Proper set up entails following TI's instructions for electrical ratings of interface circuits such as input, output and electrical loads.

NOTE:

EXPOSURE TO ELECTROSTATIC DISCHARGE (ESD) MAY CAUSE DEGRADATION OR FAILURE OF THE EVALUATION KIT; TI RECOMMENDS STORAGE OF THE EVALUATION KIT IN A PROTECTIVE ESD BAG.

3 Regulatory Notices:

3.1 United States

3.1.1 Notice applicable to EVMs not FCC-Approved:

FCC NOTICE: This kit is designed to allow product developers to evaluate electronic components, circuitry, or software associated with the kit to determine whether to incorporate such items in a finished product and software developers to write software applications for use with the end product. This kit is not a finished product and when assembled may not be resold or otherwise marketed unless all required FCC equipment authorizations are first obtained. Operation is subject to the condition that this product not cause harmful interference to licensed radio stations and that this product accept harmful interference. Unless the assembled kit is designed to operate under part 15, part 18 or part 95 of this chapter, the operator of the kit must operate under the authority of an FCC license holder or must secure an experimental authorization under part 5 of this chapter.

3.1.2 For EVMs annotated as FCC – FEDERAL COMMUNICATIONS COMMISSION Part 15 Compliant:

CAUTION

This device complies with part 15 of the FCC Rules. Operation is subject to the following two conditions: (1) This device may not cause harmful interference, and (2) this device must accept any interference received, including interference that may cause undesired operation.

Changes or modifications not expressly approved by the party responsible for compliance could void the user's authority to operate the equipment.

FCC Interference Statement for Class A EVM devices

NOTE: This equipment has been tested and found to comply with the limits for a Class A digital device, pursuant to part 15 of the FCC Rules. These limits are designed to provide reasonable protection against harmful interference when the equipment is operated in a commercial environment. This equipment generates, uses, and can radiate radio frequency energy and, if not installed and used in accordance with the instruction manual, may cause harmful interference to radio communications. Operation of this equipment in a residential area is likely to cause harmful interference in which case the user will be required to correct the interference at his own expense.

FCC Interference Statement for Class B EVM devices

NOTE: This equipment has been tested and found to comply with the limits for a Class B digital device, pursuant to part 15 of the FCC Rules. These limits are designed to provide reasonable protection against harmful interference in a residential installation. This equipment generates, uses and can radiate radio frequency energy and, if not installed and used in accordance with the instructions, may cause harmful interference to radio communications. However, there is no guarantee that interference will not occur in a particular installation. If this equipment does cause harmful interference to radio or television reception, which can be determined by turning the equipment off and on, the user is encouraged to try to correct the interference by one or more of the following measures:

- Reorient or relocate the receiving antenna.
- Increase the separation between the equipment and receiver.
- Connect the equipment into an outlet on a circuit different from that to which the receiver is connected.
- Consult the dealer or an experienced radio/TV technician for help.

3.2 Canada

3.2.1 For EVMs issued with an Industry Canada Certificate of Conformance to RSS-210 or RSS-247

Concerning EVMs Including Radio Transmitters:

This device complies with Industry Canada license-exempt RSSs. Operation is subject to the following two conditions:

(1) this device may not cause interference, and (2) this device must accept any interference, including interference that may cause undesired operation of the device.

Concernant les EVMs avec appareils radio:

Le présent appareil est conforme aux CNR d'Industrie Canada applicables aux appareils radio exempts de licence. L'exploitation est autorisée aux deux conditions suivantes: (1) l'appareil ne doit pas produire de brouillage, et (2) l'utilisateur de l'appareil doit accepter tout brouillage radioélectrique subi, même si le brouillage est susceptible d'en compromettre le fonctionnement.

Concerning EVMs Including Detachable Antennas:

Under Industry Canada regulations, this radio transmitter may only operate using an antenna of a type and maximum (or lesser) gain approved for the transmitter by Industry Canada. To reduce potential radio interference to other users, the antenna type and its gain should be so chosen that the equivalent isotropically radiated power (e.i.r.p.) is not more than that necessary for successful communication. This radio transmitter has been approved by Industry Canada to operate with the antenna types listed in the user guide with the maximum permissible gain and required antenna impedance for each antenna type indicated. Antenna types not included in this list, having a gain greater than the maximum gain indicated for that type, are strictly prohibited for use with this device.

Concernant les EVMs avec antennes détachables

Conformément à la réglementation d'Industrie Canada, le présent émetteur radio peut fonctionner avec une antenne d'un type et d'un gain maximal (ou inférieur) approuvé pour l'émetteur par Industrie Canada. Dans le but de réduire les risques de brouillage radioélectrique à l'intention des autres utilisateurs, il faut choisir le type d'antenne et son gain de sorte que la puissance isotrope rayonnée équivalente (p.i.r.e.) ne dépasse pas l'intensité nécessaire à l'établissement d'une communication satisfaisante. Le présent émetteur radio a été approuvé par Industrie Canada pour fonctionner avec les types d'antenne énumérés dans le manuel d'usage et ayant un gain admissible maximal et l'impédance requise pour chaque type d'antenne. Les types d'antenne non inclus dans cette liste, ou dont le gain est supérieur au gain maximal indiqué, sont strictement interdits pour l'exploitation de l'émetteur.

3.3 Japan

3.3.1 *Notice for EVMs delivered in Japan:* Please see http://www.tij.co.jp/lstds/ti_ja/general/eStore/notice_01.page 日本国内に輸入される評価用キット、ボードについては、次のところをご覧ください。
http://www.tij.co.jp/lstds/ti_ja/general/eStore/notice_01.page

3.3.2 *Notice for Users of EVMs Considered "Radio Frequency Products" in Japan:* EVMs entering Japan may not be certified by TI as conforming to Technical Regulations of Radio Law of Japan.

If User uses EVMs in Japan, not certified to Technical Regulations of Radio Law of Japan, User is required to follow the instructions set forth by Radio Law of Japan, which includes, but is not limited to, the instructions below with respect to EVMs (which for the avoidance of doubt are stated strictly for convenience and should be verified by User):

1. Use EVMs in a shielded room or any other test facility as defined in the notification #173 issued by Ministry of Internal Affairs and Communications on March 28, 2006, based on Sub-section 1.1 of Article 6 of the Ministry's Rule for Enforcement of Radio Law of Japan,
2. Use EVMs only after User obtains the license of Test Radio Station as provided in Radio Law of Japan with respect to EVMs, or
3. Use of EVMs only after User obtains the Technical Regulations Conformity Certification as provided in Radio Law of Japan with respect to EVMs. Also, do not transfer EVMs, unless User gives the same notice above to the transferee. Please note that if User does not follow the instructions above, User will be subject to penalties of Radio Law of Japan.

【無線電波を送信する製品の開発キットをお使いになる際の注意事項】 開発キットの中には技術基準適合証明を受けていないものがあります。技術適合証明を受けていないものご使用に際しては、電波法遵守のため、以下のいずれかの措置を取っていただく必要がありますのでご注意ください。

1. 電波法施行規則第6条第1項第1号に基づく平成18年3月28日総務省告示第173号で定められた電波暗室等の試験設備でご使用いただく。
2. 実験局の免許を取得後ご使用いただく。
3. 技術基準適合証明を取得後ご使用いただく。

なお、本製品は、上記の「ご使用にあたっての注意」を譲渡先、移転先に通知しない限り、譲渡、移転できないものとします。

上記を遵守頂けない場合は、電波法の罰則が適用される可能性があることをご留意ください。日本テキサス・インスツルメンツ株式会社
東京都新宿区西新宿 6 丁目 2 4 番 1 号
西新宿三井ビル

3.3.3 *Notice for EVMs for Power Line Communication:* Please see http://www.tij.co.jp/lstds/ti_ja/general/eStore/notice_02.page
電力線搬送波通信についての開発キットをお使いになる際の注意事項については、次のところをご覧ください。http://www.tij.co.jp/lstds/ti_ja/general/eStore/notice_02.page

3.4 European Union

3.4.1 *For EVMs subject to EU Directive 2014/30/EU (Electromagnetic Compatibility Directive):*

This is a class A product intended for use in environments other than domestic environments that are connected to a low-voltage power-supply network that supplies buildings used for domestic purposes. In a domestic environment this product may cause radio interference in which case the user may be required to take adequate measures.

-
- 4 *EVM Use Restrictions and Warnings:*
 - 4.1 EVMS ARE NOT FOR USE IN FUNCTIONAL SAFETY AND/OR SAFETY CRITICAL EVALUATIONS, INCLUDING BUT NOT LIMITED TO EVALUATIONS OF LIFE SUPPORT APPLICATIONS.
 - 4.2 User must read and apply the user guide and other available documentation provided by TI regarding the EVM prior to handling or using the EVM, including without limitation any warning or restriction notices. The notices contain important safety information related to, for example, temperatures and voltages.
 - 4.3 *Safety-Related Warnings and Restrictions:*
 - 4.3.1 User shall operate the EVM within TI's recommended specifications and environmental considerations stated in the user guide, other available documentation provided by TI, and any other applicable requirements and employ reasonable and customary safeguards. Exceeding the specified performance ratings and specifications (including but not limited to input and output voltage, current, power, and environmental ranges) for the EVM may cause personal injury or death, or property damage. If there are questions concerning performance ratings and specifications, User should contact a TI field representative prior to connecting interface electronics including input power and intended loads. Any loads applied outside of the specified output range may also result in unintended and/or inaccurate operation and/or possible permanent damage to the EVM and/or interface electronics. Please consult the EVM user guide prior to connecting any load to the EVM output. If there is uncertainty as to the load specification, please contact a TI field representative. During normal operation, even with the inputs and outputs kept within the specified allowable ranges, some circuit components may have elevated case temperatures. These components include but are not limited to linear regulators, switching transistors, pass transistors, current sense resistors, and heat sinks, which can be identified using the information in the associated documentation. When working with the EVM, please be aware that the EVM may become very warm.
 - 4.3.2 EVMs are intended solely for use by technically qualified, professional electronics experts who are familiar with the dangers and application risks associated with handling electrical mechanical components, systems, and subsystems. User assumes all responsibility and liability for proper and safe handling and use of the EVM by User or its employees, affiliates, contractors or designees. User assumes all responsibility and liability to ensure that any interfaces (electronic and/or mechanical) between the EVM and any human body are designed with suitable isolation and means to safely limit accessible leakage currents to minimize the risk of electrical shock hazard. User assumes all responsibility and liability for any improper or unsafe handling or use of the EVM by User or its employees, affiliates, contractors or designees.
 - 4.4 User assumes all responsibility and liability to determine whether the EVM is subject to any applicable international, federal, state, or local laws and regulations related to User's handling and use of the EVM and, if applicable, User assumes all responsibility and liability for compliance in all respects with such laws and regulations. User assumes all responsibility and liability for proper disposal and recycling of the EVM consistent with all applicable international, federal, state, and local requirements.
 5. *Accuracy of Information:* To the extent TI provides information on the availability and function of EVMs, TI attempts to be as accurate as possible. However, TI does not warrant the accuracy of EVM descriptions, EVM availability or other information on its websites as accurate, complete, reliable, current, or error-free.
 6. *Disclaimers:*
 - 6.1 EXCEPT AS SET FORTH ABOVE, EVMS AND ANY MATERIALS PROVIDED WITH THE EVM (INCLUDING, BUT NOT LIMITED TO, REFERENCE DESIGNS AND THE DESIGN OF THE EVM ITSELF) ARE PROVIDED "AS IS" AND "WITH ALL FAULTS." TI DISCLAIMS ALL OTHER WARRANTIES, EXPRESS OR IMPLIED, REGARDING SUCH ITEMS, INCLUDING BUT NOT LIMITED TO ANY EPIDEMIC FAILURE WARRANTY OR IMPLIED WARRANTIES OF MERCHANTABILITY OR FITNESS FOR A PARTICULAR PURPOSE OR NON-INFRINGEMENT OF ANY THIRD PARTY PATENTS, COPYRIGHTS, TRADE SECRETS OR OTHER INTELLECTUAL PROPERTY RIGHTS.
 - 6.2 EXCEPT FOR THE LIMITED RIGHT TO USE THE EVM SET FORTH HEREIN, NOTHING IN THESE TERMS SHALL BE CONSTRUED AS GRANTING OR CONFERRING ANY RIGHTS BY LICENSE, PATENT, OR ANY OTHER INDUSTRIAL OR INTELLECTUAL PROPERTY RIGHT OF TI, ITS SUPPLIERS/LICENSORS OR ANY OTHER THIRD PARTY, TO USE THE EVM IN ANY FINISHED END-USER OR READY-TO-USE FINAL PRODUCT, OR FOR ANY INVENTION, DISCOVERY OR IMPROVEMENT, REGARDLESS OF WHEN MADE, CONCEIVED OR ACQUIRED.
 7. *USER'S INDEMNITY OBLIGATIONS AND REPRESENTATIONS.* USER WILL DEFEND, INDEMNIFY AND HOLD TI, ITS LICENSORS AND THEIR REPRESENTATIVES HARMLESS FROM AND AGAINST ANY AND ALL CLAIMS, DAMAGES, LOSSES, EXPENSES, COSTS AND LIABILITIES (COLLECTIVELY, "CLAIMS") ARISING OUT OF OR IN CONNECTION WITH ANY HANDLING OR USE OF THE EVM THAT IS NOT IN ACCORDANCE WITH THESE TERMS. THIS OBLIGATION SHALL APPLY WHETHER CLAIMS ARISE UNDER STATUTE, REGULATION, OR THE LAW OF TORT, CONTRACT OR ANY OTHER LEGAL THEORY, AND EVEN IF THE EVM FAILS TO PERFORM AS DESCRIBED OR EXPECTED.

8. *Limitations on Damages and Liability:*

8.1 *General Limitations.* IN NO EVENT SHALL TI BE LIABLE FOR ANY SPECIAL, COLLATERAL, INDIRECT, PUNITIVE, INCIDENTAL, CONSEQUENTIAL, OR EXEMPLARY DAMAGES IN CONNECTION WITH OR ARISING OUT OF THESE TERMS OR THE USE OF THE EVMS , REGARDLESS OF WHETHER TI HAS BEEN ADVISED OF THE POSSIBILITY OF SUCH DAMAGES. EXCLUDED DAMAGES INCLUDE, BUT ARE NOT LIMITED TO, COST OF REMOVAL OR REINSTALLATION, ANCILLARY COSTS TO THE PROCUREMENT OF SUBSTITUTE GOODS OR SERVICES, RETESTING, OUTSIDE COMPUTER TIME, LABOR COSTS, LOSS OF GOODWILL, LOSS OF PROFITS, LOSS OF SAVINGS, LOSS OF USE, LOSS OF DATA, OR BUSINESS INTERRUPTION. NO CLAIM, SUIT OR ACTION SHALL BE BROUGHT AGAINST TI MORE THAN TWELVE (12) MONTHS AFTER THE EVENT THAT GAVE RISE TO THE CAUSE OF ACTION HAS OCCURRED.

8.2 *Specific Limitations.* IN NO EVENT SHALL TI'S AGGREGATE LIABILITY FROM ANY USE OF AN EVM PROVIDED HEREUNDER, INCLUDING FROM ANY WARRANTY, INDEMNITY OR OTHER OBLIGATION ARISING OUT OF OR IN CONNECTION WITH THESE TERMS, , EXCEED THE TOTAL AMOUNT PAID TO TI BY USER FOR THE PARTICULAR EVM(S) AT ISSUE DURING THE PRIOR TWELVE (12) MONTHS WITH RESPECT TO WHICH LOSSES OR DAMAGES ARE CLAIMED. THE EXISTENCE OF MORE THAN ONE CLAIM SHALL NOT ENLARGE OR EXTEND THIS LIMIT.

9. *Return Policy.* Except as otherwise provided, TI does not offer any refunds, returns, or exchanges. Furthermore, no return of EVM(s) will be accepted if the package has been opened and no return of the EVM(s) will be accepted if they are damaged or otherwise not in a resalable condition. If User feels it has been incorrectly charged for the EVM(s) it ordered or that delivery violates the applicable order, User should contact TI. All refunds will be made in full within thirty (30) working days from the return of the components(s), excluding any postage or packaging costs.

10. *Governing Law:* These terms and conditions shall be governed by and interpreted in accordance with the laws of the State of Texas, without reference to conflict-of-laws principles. User agrees that non-exclusive jurisdiction for any dispute arising out of or relating to these terms and conditions lies within courts located in the State of Texas and consents to venue in Dallas County, Texas. Notwithstanding the foregoing, any judgment may be enforced in any United States or foreign court, and TI may seek injunctive relief in any United States or foreign court.

Mailing Address: Texas Instruments, Post Office Box 655303, Dallas, Texas 75265
Copyright © 2019, Texas Instruments Incorporated

IMPORTANT NOTICE AND DISCLAIMER

TI PROVIDES TECHNICAL AND RELIABILITY DATA (INCLUDING DATA SHEETS), DESIGN RESOURCES (INCLUDING REFERENCE DESIGNS), APPLICATION OR OTHER DESIGN ADVICE, WEB TOOLS, SAFETY INFORMATION, AND OTHER RESOURCES "AS IS" AND WITH ALL FAULTS, AND DISCLAIMS ALL WARRANTIES, EXPRESS AND IMPLIED, INCLUDING WITHOUT LIMITATION ANY IMPLIED WARRANTIES OF MERCHANTABILITY, FITNESS FOR A PARTICULAR PURPOSE OR NON-INFRINGEMENT OF THIRD PARTY INTELLECTUAL PROPERTY RIGHTS.

These resources are intended for skilled developers designing with TI products. You are solely responsible for (1) selecting the appropriate TI products for your application, (2) designing, validating and testing your application, and (3) ensuring your application meets applicable standards, and any other safety, security, regulatory or other requirements.

These resources are subject to change without notice. TI grants you permission to use these resources only for development of an application that uses the TI products described in the resource. Other reproduction and display of these resources is prohibited. No license is granted to any other TI intellectual property right or to any third party intellectual property right. TI disclaims responsibility for, and you will fully indemnify TI and its representatives against, any claims, damages, costs, losses, and liabilities arising out of your use of these resources.

TI's products are provided subject to [TI's Terms of Sale](#) or other applicable terms available either on ti.com or provided in conjunction with such TI products. TI's provision of these resources does not expand or otherwise alter TI's applicable warranties or warranty disclaimers for TI products.

TI objects to and rejects any additional or different terms you may have proposed.

Mailing Address: Texas Instruments, Post Office Box 655303, Dallas, Texas 75265
Copyright © 2022, Texas Instruments Incorporated