

# MSP430FRBoot – Main Memory Bootloader and Over-the-Air Updates for MSP430™ FRAM Large Memory Model Devices



Ryan Brown, Katie Pier, and Gary Gao

MSP430 Apps

## ABSTRACT

This application report is an extension to [MSPBoot – Main Memory Bootloader for MSP430 Microcontrollers](#) and describes the implementation of a main-memory resident bootloader for MSP430™ FRAM microcontrollers using either universal asynchronous receiver/transmitter (UART) communication or a serial peripheral interface (SPI) bus and CC110x RF transceivers to accomplish over-the-air downloads (OAD). While still being highly flexible and modular, this bootloader maintains a small footprint, making it a very cost-effective solution, and supports the large memory model (devices with a memory footprint greater than 16 KB).

A software package with examples and source code for both master and slave devices is available from [http://software-dl.ti.com/msp430/msp430\\_public\\_sw/mcu/msp430/MSP430FRBoot/latest/index\\_FDS.html](http://software-dl.ti.com/msp430/msp430_public_sw/mcu/msp430/MSP430FRBoot/latest/index_FDS.html). Section 5 provides step-by-step procedures that explain how to run the examples.

This bootloader is not to be confused with the MSP430 bootloader (BSL), which resides in protected memory (ROM) in MSP430 FRAM microcontrollers. For more information on the BSL, see the [MSP430™ FRAM Devices Bootloader \(BSL\) User's Guide](#). The project collateral that is described in this application report can be downloaded from <http://www.ti.com/lit/zip/SLAA721>.

---

## Table of Contents

<b>Trademarks</b> .....	2
<b>1 Introduction</b> .....	3
1.1 Glossary.....	4
1.2 Conventions.....	4
<b>2 Implementation</b> .....	5
2.1 Main.....	6
2.2 Application Manager.....	6
2.3 Memory Interface (MI).....	11
2.4 Communication Interface (CI).....	11
<b>3 Customization of MSP430FRBoot</b> .....	16
3.1 Predefined Customizations.....	16
<b>4 Building MSPBoot</b> .....	17
4.1 LaunchPad™ Development Kit Hardware.....	17
4.2 CC110x Hardware.....	18
4.3 Software.....	18
<b>5 Demo Using FRAM LaunchPad Development Kit as Host</b> .....	22
5.1 Hardware.....	22
5.2 Building the Host Project.....	22
5.3 Running the Demo.....	23
<b>6 Porting the target side example projects to other MSP430FR devices</b> .....	25
<b>7 References</b> .....	29
<b>8 Revision History</b> .....	29

**Trademarks**

MSP430™, Code Composer Studio™, and are trademarks of Texas Instruments.  
All other trademarks are the property of their respective owners.

## 1 Introduction

Expanding on the original theory behind *MSPBoot – Main Memory Bootloader for MSP430™ Microcontrollers*, many FRAM applications require a solution that allows for easy field upgrades. MSP430FRBoot has been designed to accomplish this task with any custom communication peripheral and entry sequence as defined by the user. Two different examples have been included to further demonstrate these capabilities. One example uses the UART protocol to create a simple two-wire communication link between devices, while the other example incorporates SPI buses and two CC110x devices to accomplish wireless over-the-air downloads. Above all, these solutions can maintain high performance, high integration, and ultra-low power in a cost-effective design.

MSP430 FRAM devices are equipped with the very useful UART Bootloader (BSL) which allows for a simple way to do field upgrades. Most MSP430 FRAM devices have a ROM-resident BSL that supports UART and cannot be modified to support I<sup>2</sup>C or other interfaces. The MSP430FRxxx1 devices implement an I<sup>2</sup>C BSL solution instead of UART. Furthermore, the BSL cannot include custom entry sequences that might be required for application. For more information on the BSL, see the *MSP430™ FRAM Devices Bootloader (BSL) User's Guide*.

Given these limitations, it might be necessary to create a bootloader that resides in main memory and still allows for an easy implementation of the application. This application report describes the implementation of the MSP430FRBoot bootloader with the following characteristics:

- Small footprint (less than 4KB in size required)
- 20-bit incorporation for large memory models
- Supports the eUSCI peripherals offered on FRAM devices
- UART communication offers the most simple wired interface using a small memory space.
- SPI bus offers over-the-air downloads (using the CC110x) at a slightly larger footprint.
- Different options that allow for customizable levels of robustness
- Optional dual image support in case of communication interruption
- Allows for use of all interrupts in application
- Application can reuse the low-level drivers from the bootloader or implement its own drivers.
- Configurable entry sequence
- Optional validation of application using CRC-CCITT
- Source code available, allowing for additional customizations

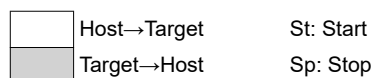
Source code for the bootloader with different sample configurations, application examples, and host examples are included to allow for easy testing, customization, and implementation. Knowledge of UART and SPI specifications as well as sub-1 GHz RF communication protocol is assumed.

## 1.1 Glossary

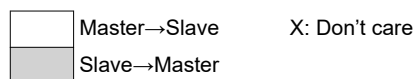
BOR	Brownout reset
BSL	MSP430 Bootloader
CI	MSPBoot Communication Interface
CRC	Cyclic Redundancy Check
eUSCI	Enhanced Universal Serial Communication Interface
MCU	Microcontroller
MI	MSPBoot Memory Interface
MSPBoot	The bootloader described by <a href="#">MSPBoot – Main Memory Bootloader for MSP430™ Microcontrollers</a>
MSP430FRBoot	The bootloader described by this application report
OSI	Open Systems Interconnection
OAD	Over-the-Air Download
SPI	Serial Peripheral Interface
ROM	Read-Only Memory
UART	Universal Asynchronous Receiver/Transmitter

## 1.2 Conventions

This document contains some UART transfer examples that use the following form:

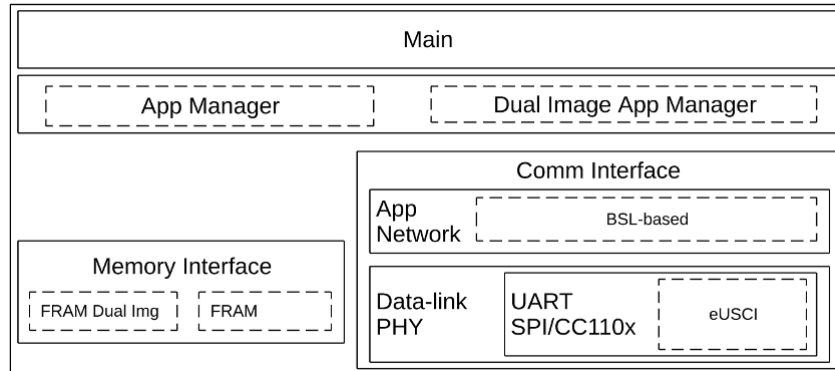


SPI transfer examples use the following form:



## 2 Implementation

A modular approach is used to allow for an easy migration between MSP430 devices and allow for customization of each layer. [Figure 2-1](#) shows the software layers.



**Figure 2-1. MSPBoot Software Architecture**

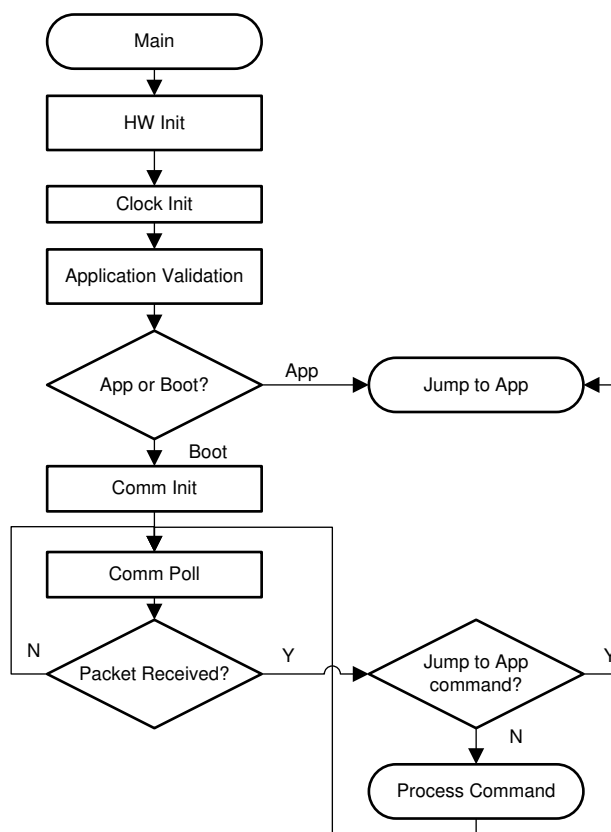
Each module is described in more detail in the following sections.

## 2.1 Main

The main routine has the following purpose:

- Initialize basic functionality of the MSP430 MCU
- Initialize the other MSP430FRBoot layers
- Implement the main loop which polls the communication interface and processes commands

Figure 2-2 shows the state diagram of the main routine.



**Figure 2-2. Flow Diagram of Main**

## 2.2 Application Manager

The main functions of the Application Manager are:

- Detecting when the device should be in bootloader mode versus application mode
- Validating the application
- Redirecting interrupt vectors
- Jumping from bootloader to application
- Recovering a valid image when in dual-image mode

### 2.2.1 Bootloader and Application Detection

The Application Manager detects if the bootloader or the application should be executed by applying the following rules:

- Application is executed if
  - The application is valid (see [Section 2.2.1.2](#))
 AND
  - The bootloader is not forced by an external event or by application (see [Section 2.2.1.1](#))
- Bootloader is executed if
  - It is forced by an external event or by the application
 OR
  - The application is invalid

Figure 2-3 shows the implementation of this decision process.

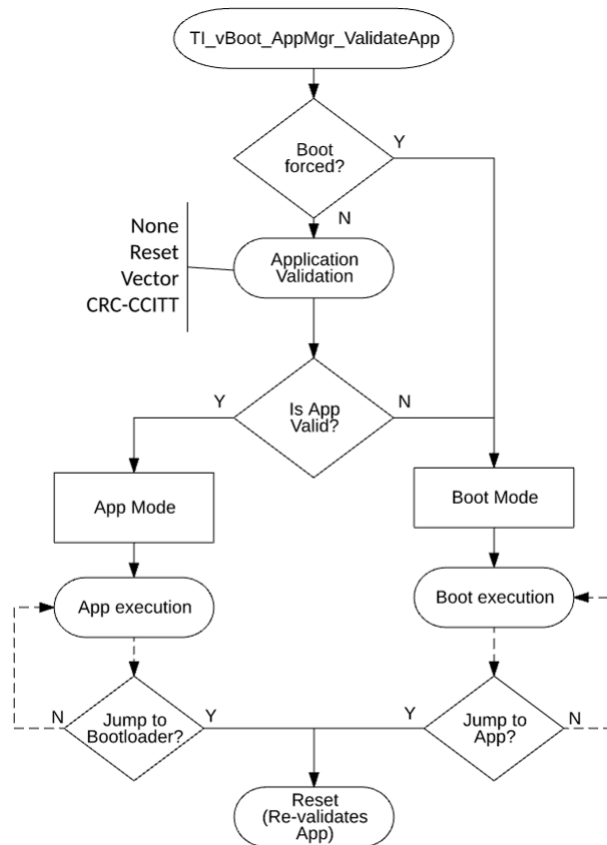


Figure 2-3. Application Validation by App Manager

### 2.2.1.1 Forcing Bootloader Mode

Even with a valid application, the bootloader mode can be forced by the following:

- Option1: An external event such as the state of a GPIO after reset.

By default, the software checks if the following GPIOs are low after reset to force bootloader mode:

- P1.1 in MSP430FR5969 (S2 button on MSP-EXP430FR5969)
- P5.5 in MSP430FR5994 (S2 button on MSP-EXP430FR5994)
- P2.7 in MSP430FR2433 (S2 button on MSP-EXP430FR2433)

This event can be modified as needed in `TI_MSPBoot_AppMgr_BootisForced()`.

- Option2: An application calls for the execution of bootloader mode.

The variables `StatCtrl` and `PassWd` are reserved and shared between application and bootloader. To force bootloader mode, the application sets these variables to:

```
PassWd = 0xCODE  
StatCtrl.BIT0 = 1
```

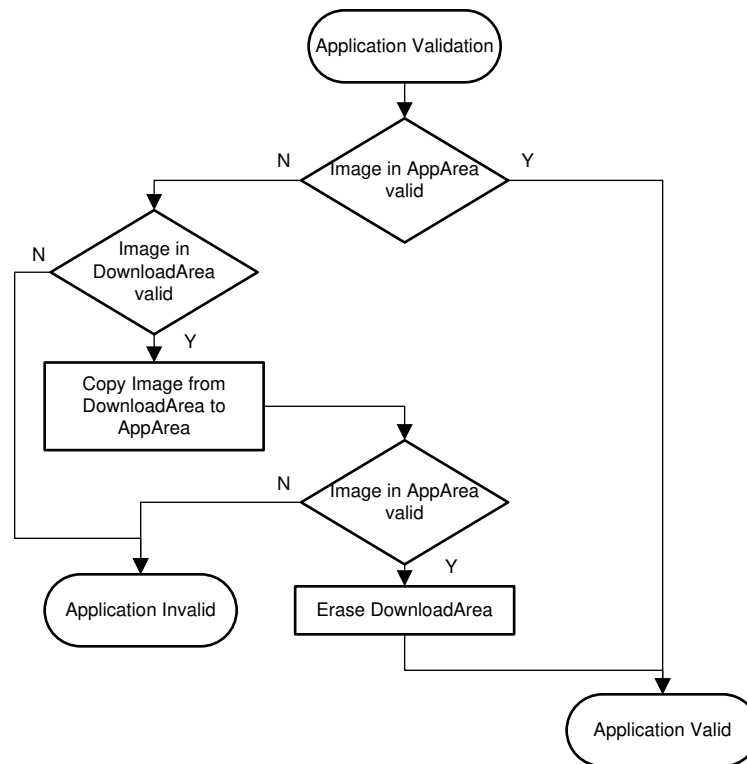


### 2.2.1.2 Application Validation

The application validation mechanism allows the bootloader to validate the application before executing it. Three methods are implemented to allow for different levels of code footprint and security:

- Single image mode (new application will download directly into the application area)
  - Two options can be used in this mode (Defined in TI\_MSPBoot\_Config.h):
    - Level\_1: Checks if the reset vector is empty (0xFFFF)
    - Level\_2: Does CRC in the application area and uses the CRC result to compare with the CRC signature that is located at the start of the application memory
- Dual image mode (new application will download into a dedicated area and copy into the application area after the CRC check)

Figure 2-4 shows the implementation of the validation process in dual image mode.



**Figure 2-4. Dual Image Application Validation**

The validation methods can prevent executing corrupted applications but they do not ensure the integrity and functionality of the application, which is the user's responsibility. If the application does not have the intended functionality, the MSP430 can still be recovered using a hardware entry sequence.

When an application download process is completed, MSPBoot performs the following steps before jumping to the new application:

1. Validate the new image in the Download area.
  - a. If invalid, exit. A reset forces the bootloader again and executes the application only if the original image is valid.
  - b. Continue otherwise.

2. Replace Application area with Download area.
3. Validate image in Application area.
  - a. If valid, erase Download area. A reset will execute the application, because the image in the Application area is valid.
  - b. Exit otherwise. This is an unexpected state, but a reset will validate both images again.

### 2.2.1.3 Jumping to Application

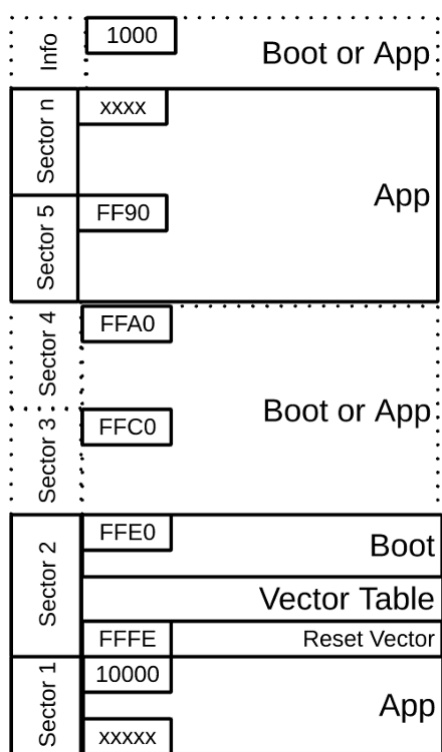
MSPBoot forces a reset when the Communication Protocol detects that the download is complete and the device should jump to the application.

FRAM devices use a software BOR to force reset, which provides an efficient method to restore the MSP430 MCU to a default state. Declaration HW\_RESET\_BOR is enabled by default.

## 2.2.2 Memory Assignment

MSPBoot cannot erase or reprogram the bootloader area. This limitation provides a more secure implementation, because the bootloader is always accessible, and the MSP430 MCU can be recovered by forcing bootloader mode.

The reset vector is an integral part of the bootloader, because it forces the MSP430 MCU to always jump to the bootloader entry sequence and, thus, should not be erased. Because the reset vector resides in the top of 16-bit FRAM space (0xFFFF), the bootloader code is placed in the contiguous locations (see [Figure 2-5](#)).



**Figure 2-5. Memory Assignment**

The interrupt vector table is also in the protected boot area. Because the value of the interrupt tables is expected to change based on the application, this means that special considerations must be followed to allow for application interrupts. Additional 20-bit space is available for the application (0x10000 and above).

### 2.2.3 Interrupt Vectors in FRAM Devices

FRAM does not have the limitation of a minimum erase size, so all interrupts can be reprogrammed in FRAM devices without risking erasure of the reset vector. By default, MSP430FRBoot enables protection of the bootloader area using MPU, but this feature is disabled while reprogramming interrupt vectors.

Some MSP430 MCUs support redirecting vectors to RAM in hardware (SYSRIVECT), which could be a good alternative especially for devices with sufficient RAM. This also allows for full protection of the bootloader using the MPU module.

## 2.3 Memory Interface (MI)

To protect the bootloader area, the MSP430 MCU is logically partitioned in two sections:

- Application area: Writable section with user application and redirected vector table
- Bootloader area: Nonwritable section with bootloader and vector table
- Download area: Writable section with bootloader and vector table (Dual image mode only)

The size of each section is defined in the project linker file. Examples showing different memory sizes are available in the example projects for the Code Composer Studio™ IDE (CCS).

The memory interface provides an API that is used to program and erase the application memory area and protect the bootloader area. This memory protection is implemented as follows for FRAM devices:

- FRAM does not require erasing, but the application memory is written with 0xFF when an erase is performed to calculate a valid CRC.
- The address being erased or programmed is validated to avoid accidental corruption of the bootloader area.
- The MPU protects the bootloader area. The user can modify the MPU settings according to the application, but TI recommends always protecting the bootloader area.
- MPU protection is disabled only when updating interrupt vectors as discussed in [Section 2.2.3](#).

---

#### Note

MSPBoot does not allow write or erase access to the bootloader area when executing updates, but it cannot protect against accidental erase when executing an application. The bootloader area is hardware-protected using the MPU.

---

### 2.3.1 Dual Image Support

When Dual Image support is enabled, the Memory Interface module partitions the MSP430 application area in two subsections, resulting in the following logical memory map:

- Nonboot area:
  - Download area: Section used as temporary buffer to store a new application image. Physical addresses in this area are inaccessible to the host, but this area is written when the host attempts to download to logical addresses in the application area.
  - Application area: Section used to execute the current application image. Logical addresses in this area are available to the host, but the host cannot write to the physical addresses. The bootloader updates this area when a new image in Download area is validated. This procedure is explained in [Section 2.2.1.2](#).
- Boot Area: Read-only section with bootloader and vector table.

The size of each sector is defined in the project linker file. Examples showing different memory sizes are available in the example projects for CCS.

## 2.4 Communication Interface (CI)

The purpose of the CI is to:

- Receive data from and send data to a host
- Implement a communication protocol
- Parse the data, validate a packet, and execute the appropriate command

- Based on the output of the function, generate a response

Following the Open Systems Interconnection (OSI) model, the CI is divided into two modules:

- Physical-DataLink (PHY-DL)
- Network-Application (NWK-APP)

### 2.4.1 Physical-DataLink (PHY-DL)

The PHY-DL layer provides a hardware abstraction layer (HAL) to simplify the migration process to a different MSP430 derivative or peripheral. The PHY-DL layer provides a stable channel for sending data to and receiving raw data from the host. The current bootloader was implemented using UART or SPI and it supports the eUSCI, but other options could be included if desired. The PHY-DL layer is initialized by providing a pointer to a structure with the callback functions in [Table 2-1](#).

**Table 2-1. PHY-DL Callback Structure**

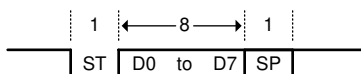
<code>t_CI_Callback</code>	Structure type definition
<code>.RxCallback</code>	Called when a new byte is received
<code>.TxCallback</code>	Called when a byte needs to be transmitted
<code>.ErrorCallback<sup>(1)</sup></code>	Called when an error is detected in PHY-DL (for example, a time-out)

(1) Callback is optional. The protocol or CI may not require a callback.

A higher level layer (NWK-APP) uses the callback functions to implement the communication protocol. Depending on the protocol, some callbacks are not required and can be disabled in the PHY-DL layer to reduce the footprint. NWK-APP layer is described in [Section 2.4.2](#).

#### 2.4.1.1 UART

The UART interface is implemented using 8-N-1 format (8 data bits, no parity bit, and 1 stop bit) (see [Figure 2-6](#)).



**Figure 2-6. UART 8-N-1 Format**

The default baud rate is defined as `CONFIG_CI_PHYDL_UART_BAUDRATE = 57600`.

#### 2.4.1.2 SPI

The SPI interface, used for CC110x communication, is implemented using the following configuration (also see [Figure 2-7](#)):

- 8-bit data
- MSB first
- Clock polarity = 0 (inactive state is low)
- Clock phase = 1 (data captured on first clock edge, changed on following edge)
- 3-pin configuration with STE implemented using GPIO

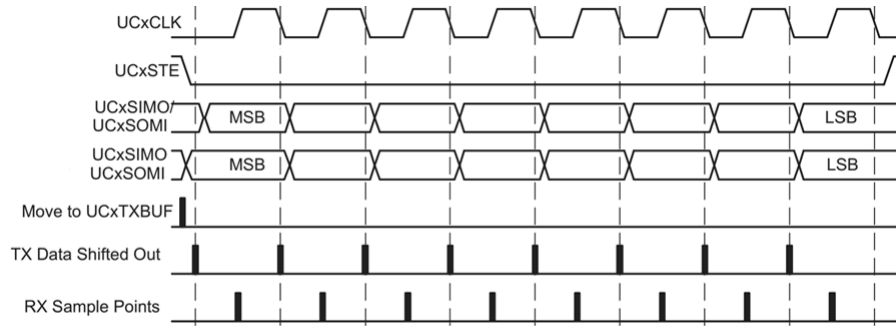


Figure 2-7. SPI Format

### 2.4.1.3 CC110x

The CC110x devices send data using a packet structure shown in Table 2-2.

Table 2-2. CC110x Data Packet Structure

Header	Length <sup>(1)</sup>	Command	Address <sup>(2)</sup>	Data <sup>(2)</sup>	Checksum
0x80	N	1 byte	3 bytes	N-6 bytes	2 bytes

- (1) The maximum packet length is 24 bytes; therefore, the most data bytes (N) allowed per packet is 16.
- (2) If the length is equal to one (command only), these sections are not included in the packet.

The configuration for the CC110x in MSP430FRBoot is as follows:

- 250-kbps data speeds
- Carrier frequency of 902750 Hz

The data speed can be set to either 1.2 or 38.4 kbps through the variable sent by the radio\_init function inside of TI\_MSPBoot\_CI\_PHYDL\_CC1101.c. Radio frequency can be altered in TI\_MSPBoot\_Config.h. Changes must be made to both the target and host firmware projects. See the [CC1101 Low-Power Sub-1 GHz RF Transceiver](#) data sheet for more information regarding common CC110x command and other communication details.

This packet structure is identical to the BSL-based protocol, therefore it can be directly transferred from the PHY-DL to the NWK-APP layer with the expected formatting. This is also referred to in [Section 2.4.2.1.2](#).

### 2.4.1.4 Comm Sharing

The user application can use the communication interface as desired (UART, GPIO, or other purpose), because the resources are released when the microcontroller jumps to the application. Optionally, the CI PHY-DL can be shared with the application, allowing it to use the same communication interface and reducing the application footprint. When this feature is enabled, the bootloader shares the function pointers from [Table 2-3](#).

Table 2-3. Boot2App\_Vector\_Table Definition

Function Pointer	Description
Boot2App_Vector_Table	Table with addresses of shared CI PHY-DL functions
TI_MSPBoot_CI_PHYDL_Init	Function used to initialize PHY-DL passing a pointer to an application t_CI_Callback
TI_MSPBoot_CI_PHYDL_Poll	Function checks all relevant flags and calls corresponding callbacks when required.
TI_MSPBoot_CI_PHYDL_TxByte	Function used to write the TX Buffer

The application must declare its own callbacks, which are passed during initialization of CI PHY-DL and called when the corresponding event is detected. The PHY-DL layer is designed with low footprint being a top priority. The application can always implement its own drivers if the PHY-DL implementation is inadequate. Application examples showing how to share CI PHY-DL are included in the software package.

## 2.4.2 NWK-APP

The CI Network-Application layer implements the communication protocol, interpreting the raw data from PHY-DL, and validates such data before executing the appropriate commands. For means of simplicity, MSP430FRBoot only uses the BSL-based protocol.

### 2.4.2.1 BSL-Based Protocol

The MSP430 BSL is the standard bootloader included in MSP430 MCUs. The BSL is described in detail in [MSP430 FRAM Devices Bootloader \(BSL\) User's Guide](#).

The BSL-based protocol implemented in MSP430FRBoot maintains robustness but does not implement all the commands and exactly the same format as the BSL protocol to reduce its footprint. The protocol is packet-based and has the format shown in [Table 2-4](#).

**Table 2-4. BSL-Based Protocol Command Format**

Header	Length	Payload	Checksum[L]	Checksum[H]
0x80	1 to PAYLOAD_MAX_SIZE <sup>(1)</sup>	1 to PAYLOAD_MAX_SIZE bytes	1 byte	1 byte

(1) PAYLOAD\_MAX\_SIZE is set to 20 by default (1 CMD + 3 Addr + 16 Data).

**Header:** Fixed to 0x80.

**Length:** 1 byte with the length of the payload. Valid values are 1 to PAYLOAD\_MAX\_SIZE.

**Payload:** 1 to PAYLOAD\_MAX\_SIZE bytes containing the command, address, and data (optional depending on the command type).

**Checksum:** 16-bit CRC-CCITT of the payload.

The commands in [Table 2-5](#) are implemented as a payload.

**Table 2-5. BSL-Based Protocol Commands**

Command	CMD	Byte <sub>1</sub>	Byte <sub>2</sub>	Byte <sub>3</sub>	Byte <sub>4</sub>	...	Byte <sub>length-1</sub>
ERASE_SEGMENT	0x12	ADDR[L]	ADDR[M]	ADDR[H]	X	X	X
ERASE_APP	0x15	X	X	X	X	X	X
RX_DATA_BLOCK	0x10	ADDR[L]	ADDR[M]	ADDR[H]	DATA0	X	DATA <sub>n</sub>
TX_VERSION	0x19	X	X	X	X	X	X
JUMP2APP	0x1C	X	X	X	X	X	X

**ERASE\_SEGMENT:** Erases the memory segment (512B in FRAM) addressed by ADDR.

**ERASE\_APP:** Erases the application area.

**RX\_DATA\_BLOCK:** Programs n bytes of data starting at address ADDR.

**TX\_VERSION:** Requests the MSPBoot version from the target.

**JUMP2APP:** Instructs the target to jump to the application image (after validation).

Each response from the target is always a single byte. [Table 2-6](#) lists the valid values.

**Table 2-6. BSL-Based Protocol Slave Response**

Response	Value	Description
OK	0x00	Previous command executed correctly
HEADER_ERROR	0x51	Frame had incorrect header
CHECKSUM_ERROR	0x52	Frame checksum incorrect
PACKETZERO_ERROR	0x53	Length of packet = 0
PACKETSIZE_ERROR	0x54	Length of packet > MAX_LEN
UNKNOWN_ERROR	0x55	Error in protocol

**Table 2-6. BSL-Based Protocol Slave Response (continued)**

Response	Value	Description
INVALID_PARAMS	0xC5	Parameters received for command are incorrect
INCORRECT_COMMAND	0xC6	Received command is not valid
MSPBOOT_VERSION	0 to 0xFF	Sent as response for TX_VERSION command (default is 0xA0)

#### 2.4.2.1.1 Security

The contents of each packet are validated with a 16-bit CRC that provides additional robustness to the bootloader. The host can check the result of each command and retry if the previous command was unsuccessful.

The ERASE\_SEGMENT and RX\_DATA\_BLOCK commands can erase and write any area within the 16-bit memory map, thus potentially corrupting the bootloader. To avoid this possibility, TI recommends including the CONFIG\_MI\_MEMORY\_RANGE\_CHECK MI definition to validate the address before a program or erase operation. The application area can be corrupted if the process is interrupted, so TI recommends using one of the application validation methods described in [Section 2.2.1.2](#) or use the dual-image approach.

#### 2.4.2.1.2 BSL-Based Protocol Using CC110x

The CC110x implementation of this protocol follows the same guidelines used for UART, but it includes slight changes since the information is received in complete packets instead of bytes. Because the incoming CC110x packet outlined in [Table 2-2](#) is the same as the expected BSL-based protocol in [Table 2-4](#), data from the PHY-DL layer can be directly transferred to the NWK-APP without the need for conversion.

#### 2.4.2.1.3 Examples Using UART or CC110x

The following considerations apply when using UART with BSL-based protocol:

- Address is not required, because communication is expected to be point-to-point.
- All bytes in UART are in 8-N-1 format as described in [Section 2.4.1.1](#).
- The target responds with the command result when ready and not when requested by the host.
- The host should wait for the response from the target after sending a command, preferably with a time-out.
- Different commands have different processing times.
- Example: Host erases the microcontroller application area.

0x80	0x01	0x15	0x64	0xA3
Header	Length	ERASE_APP	Checksum_L	Checksum_H

The target device processes the command and responds with the result when ready.

0x00
OK

The same considerations apply when using a CC110x with BSL-based protocol. The exception to this is [Section 2.4.2.1.2](#) where it is stated that all bytes received in packets from the CC110x are in the same format expected for BSL-based protocol; therefore, they can be directly transferred from the PHY-DL to the NWK-APP. Although processing times are the same, over-the-air communication can be expected to be slightly slower than UART, and host wait times should be lengthened to compensate.

### 3 Customization of MSP430FRBoot

MSPBoot was designed with low cost and low footprint being top priorities; however, some applications require or can benefit from having a higher level of security and robustness. Based on the application requirements, different levels of customizations have been added to the MSP430FRBoot code and they can be adjusted to particular needs. These options are selected either by adding the appropriate files or by enabling or disabling preprocessor definitions. [Table 3-1](#) list the options that can be configured in TI\_MSPBoot\_Config.h.

**Table 3-1. Optional Configurations**

Value	Description
NDEBUG	
Defined	ASSERT_H functions are ignored. Watchdog is enabled.
Undefined	Used during debugging. ASSERT_H functions are checked. Watchdog is disabled.
CONFIG_MI_MEMORY_RANGE_CHECK	
Defined	The address being erased or programmed is validated to be within the Application area.
Undefined	Address being erased or programmed is not validated. Host must send correct address.
CONFIG_APPMGR_APP_VALIDATE	
1	Application is validated by checking its reset vector.
2	Application is validated by checking its CRC_CCITT.
CONFIG_CI_PHYDL_COMM_SHARED	
Defined	Communication Interface PHY-DL layer is shared with application.
Undefined	CI PHY-DL is not shared with application.
CONFIG_CI_PHYDL_TIMEOUT	
Defined	Detect time-out in CI PHY-DL.
Undefined	CI PHY-DL does not detect time-out.
CONFIG_CI_PHYDL_ERROR_CALLBACK	
Defined	A callback function is called when a time-out error is detected.
Undefined	A callback function is not called when a time-out is detected.

Other customizations are selected by adding and using the appropriate files in the project. [Table 3-2](#) lists the files that are interchangeable in the project.

**Table 3-2. Customization Files**

File	Comments
<b>CI PHY-DL</b>	
TI_MSPBoot_CI_PHYDL_USCI_UART.c	Use eUSCI as UART
TI_MSPBoot_CI_PHYDL_CC1101.c	Use CC110x
<b>MI</b>	
TI_MSPBoot_MI_FRAM.c	API used to program application FRAM
TI_MSPBoot_MI_FRAMDualImg.c	API implementing dual image in FRAM
<b>App Manager</b>	
TI_MSPBoot_AppMgr.c	Standard App Manager
TI_MSPBoot_AppMgrDualImg.c	App Manager that supports dual image

#### 3.1 Predefined Customizations

The software package includes projects for Code Composer Studio and IAR IDEs that support three devices (MSP430FR5969, MSP430FR5994, and MSP430FR2433) with two communication interfaces (UART or SPI with CC110x) and two predefined configurations (single image, dual image) per device. In the provided CCS examples, devices and communication interfaces are separated by project selection, and the predefined configurations can be chosen under Project → Build Configurations → Set Active.

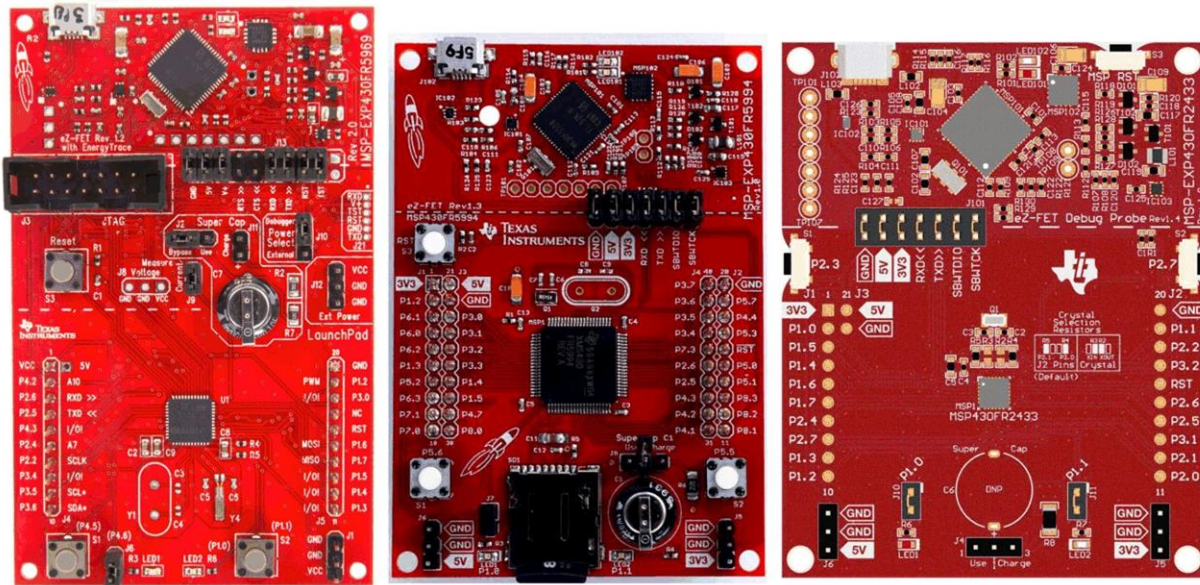


## 4 Building MSPBoot

This section provides a step-by-step guide that explains how to build the bootloader and demo applications for a target device. [Section 5](#) explains how to build and use the host applications to run a demo.

### 4.1 LaunchPad™ Development Kit Hardware

This software package includes examples for the MSP430FR5969, MSP430FR5994, and MSP430FR2433 on their LaunchPad™ development kits (MSP-EXP430FR5969, MSP-EXP430FR5994, and MSP-EXP430FR2433, respectively) (see [Figure 4-1](#)).

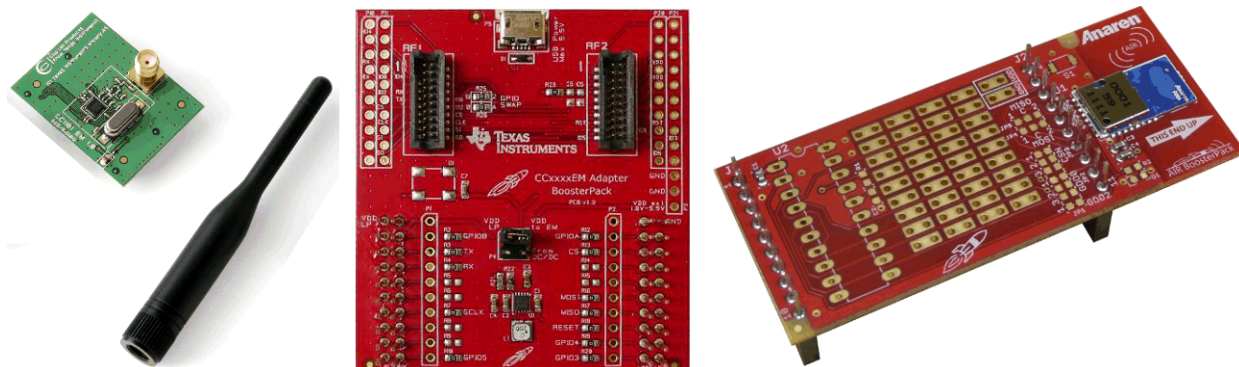


**Figure 4-1. MSP-EXP430FR5969, MSP-EXP430FR5994, and MSP-EXP430FR2433**

The bootloader and demo applications use the same LED (LED1 and LED2) and push button (S1 and S2) notations across all variants of the LaunchPad development kits. The pin assignments that correspond to these I/O peripherals are different for each board derivative. For ease of use, the examples have been designed so that the host and target LaunchPad development kits should be the same derivative, although this can be modified for different configurations if desired.

## 4.2 CC110x Hardware

Two hardware options are available for using CC110x communication with the MSP430FRBoot examples. The first is a combination of the CC1101EMK868-915 and BOOST-CCEMADAPTER, but the simplest solution is with a 430BOOST-CC110L. [Figure 4-2](#) shows both options.



**Figure 4-2. CC1101EMK868-915, BOOST-CCEMADAPTER, and 430BOOST-CC110L**

Two units of either option are required, one for the host device and the other for the target. Both solutions are compatible across all LaunchPad development kits and are directly connected such that no other hardware is required to run the provided examples. More information about the ecosystem for the LaunchPad development kits and BoosterPack plug-in modules can be found on the [TI LaunchPad tools page](#).

## 4.3 Software

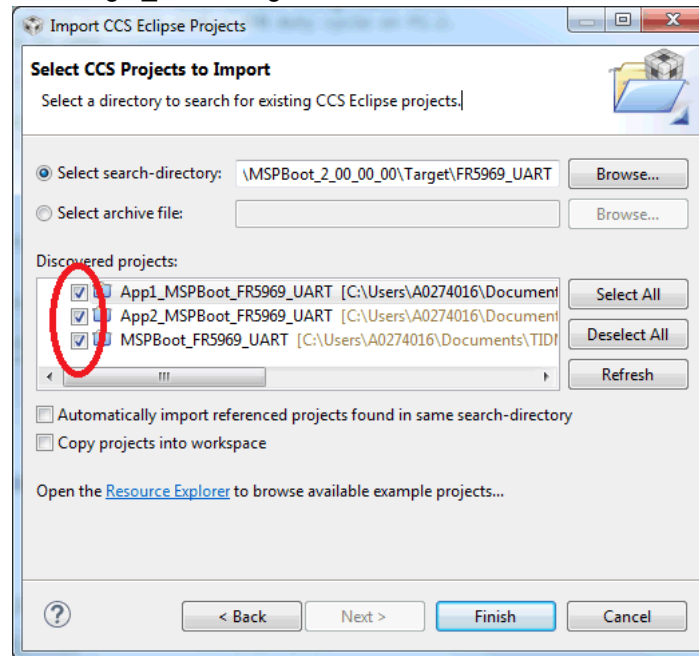
The software package includes the following folders:

- **Target:** Target bootloader and demo applications.
  - **FR5969\_UART, FR5969\_CC1101, FR5994\_UART, FR5994\_CC1101, FR2433\_UART, FR2433\_CC1101:** Projects that support the appropriate FRAM derivative with the communication specified.
    - **CCS:** CCS project files.
      - **MSPBoot:** CCS project files for the bootloader.
        - Config: CCS Linker files for the bootloader.
      - **App1\_MSPBoot:** CCS project files for Application Example 1.
        - Config: CCS Linker files for App1.
      - **App2\_MSPBoot:** CCS project files for Application Example 2.
        - Config: CCS Linker files for App2.
    - **Src:** Source code.
      - **MSPBoot:** Source code for the bootloader.
        - **AppMgr:** App Manager source code files.
        - **Comm:** CI source code files.
        - **MI:** MI source code files.
      - **App1:** Source code for Application Example 1.
      - **App2:** Source code for Application Example 2.
- **Host:** Host demo application.
  - **MSP-EXP430FR5969, MSP-EXP430FR5994, MSP-EXP430FR2433:** Host project that supports the corresponding LaunchPad development kits (see [Section 4.3.2](#)).
    - CCS: CCS project files.
    - Src: Source code.
      - TargetApps: Converted target application examples.
- **430txt\_converter:** Scripts and applications used to convert CCS output files to host TargetApps. See [Section 4.3.2](#) for details.

- **linkerGen**: Creates custom command linker file for the specific device derivative. See [Section 4.3.3](#) for details.

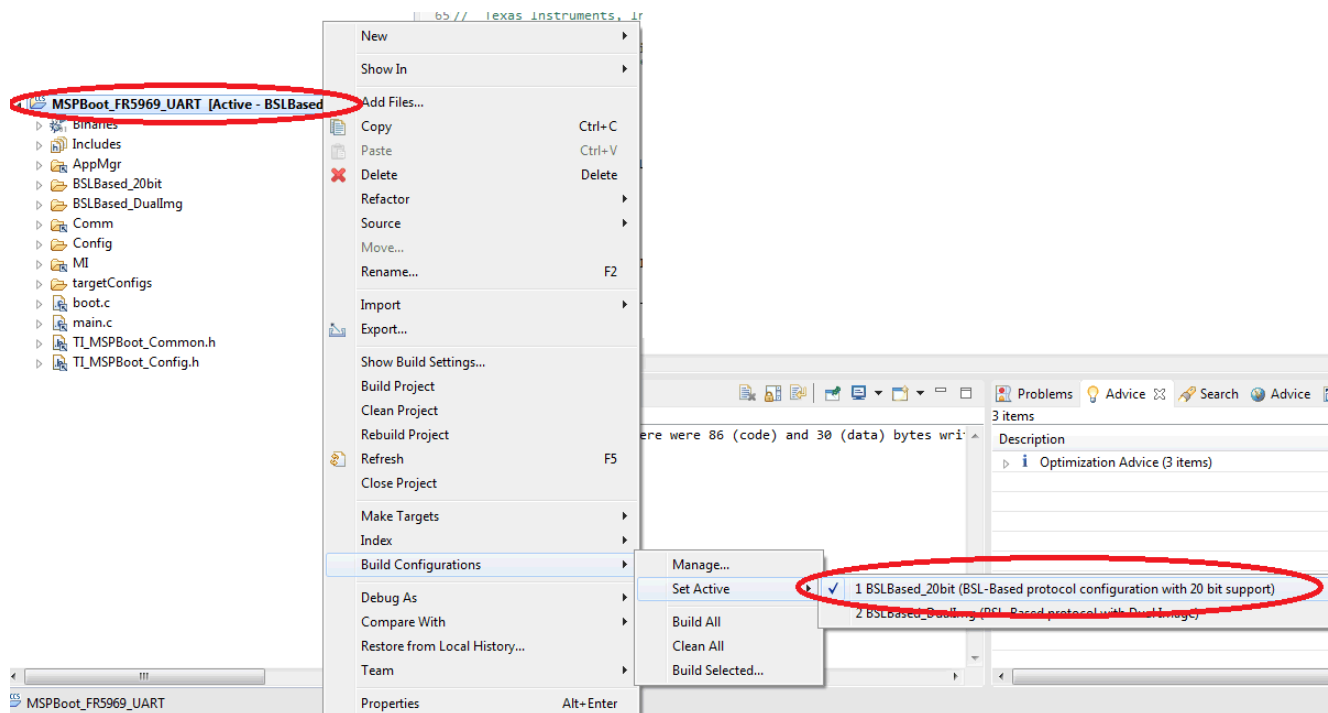
### 4.3.1 Building the Target Software



1. Select a target processor: MSP430FR5969, MSP430FR5994, or MSP430FR2433.
2. Open CCS and select or create a workspace.
3. Import the MSPBoot CCS projects into the workspace. The projects are located in MSP430FRBoot\_<version>\Target\_CCS\<target>\CCS\

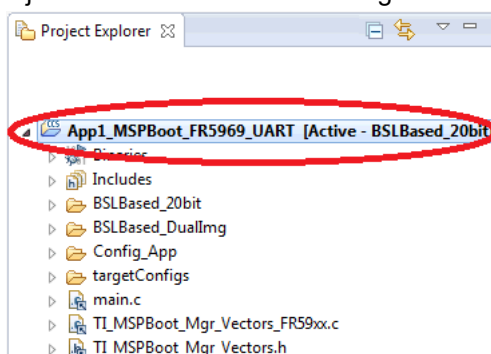



**Figure 4-3. Import MSPBoot CCS Projects**

4. Build the bootloader.
  - a. Select the MSPBoot project.
  - b. Select the proper target configuration based on [Section 3.1](#).


**Figure 4-4. Select Target Configuration**

- c. Build  and Download . Only the target LaunchPad development kit should be connected to the PC.
5. Build both applications.
  - a. Select the App1\_MSPBoot project and select the same configuration as the bootloader:


**Figure 4-5. Select App1\_MSPBoot Project**

- b. Click the Build  project. The output is generated after this step, but the output will be converted and downloaded through the Host processor. [Section 4.3.2](#) explains how to convert the image, and [Section 5](#) explains how to download it using a host demo.
- c. Repeat Step 5 for App2\_MSPBoot.

### 4.3.2 Convert Application Output Images

Find the .txt image in the App1 or App2 project.

This .txt file does not include CRC, and it needs to be converted to a format usable by the Host project. To make this easier, the software package includes 430txt2C, a Python script used to convert an MSP430 .txt file to a C array:

- Find the convert tool in the folder: "MSP430FRBoot\_&lt;version&gt;\Utilities\430txt\_converter".
- Readme.txt - Shows how to use the convert tool
- demo\_test.bat - Needs to be modified by your use case and call 430txt2c.py
- 430txt2c.py - Converts .txt file to .c file based on the command in demo\_test.bat

---

#### Note

Install [Python 3](#) before using this tool.

---

### 4.3.3 Generating Linker Files

Linker files for CCS and IAR are included for all target configurations, and they can be used as a starting point for other devices or custom projects. MSP430FRBoot includes a linker generator script that can also help with this process.

- Find the convert tool in the folder "MSP430FRBoot\_&lt;version&gt;\Utilities\linkerGen"
- Readme.txt - Shows how to use the convert tool
- demo\_link.bat - Needs to be modified by your use case and call "MSPFRBOOT\_Linkergen\_v2.py"
- MSPFRBOOT\_Linkergen\_v2.py - Generates the linker files based on the command in demo\_link.bat

---

#### Note

Install [Python 3](#) before using this tool.

---

## 5 Demo Using FRAM LaunchPad Development Kit as Host

This software package includes projects and source code for a host device running on MSP-EXP430FR5969, MSP-EXP430FR5994, and MSP-EXP430FR2433 LaunchPad development kits. Each supports its own MSPBoot protocol with all target derivatives. As an example, the MSP-EXP430FR5969 supports MSP430FR5969 MSPBoot targets for either UART or CC110x communication for both single-image or dual-image modes, and so forth. This can be tailored such that any LaunchPad development kit host can be used to program any target MSP derivative with the proper MSP430FRBoot firmware.

### 5.1 Hardware

From the options described earlier, this demo uses FRAM LaunchPad development kits to connect to a target of the same derivative. For UART communication, the eUSCI TXD and RXD lines need to be connected in addition to ground. Make sure that the host TXD line is connected to the target RXD line, and the host RXD line is connected to the target TXD line.

No wiring is required between the target and host devices when using CC110x communication. Simply connect the CC1101EMK868-915 with BOOST-CCEMADAPTER or the 430BOOST-CC110L to the corresponding LaunchPad development kit or device pins to complete the setup. Make sure that the BoosterPack plug-in modules are correctly oriented on the LaunchPad development kit boards.

Table 5-1 lists the specific eUSCI peripheral used for each MSP device and communication type.

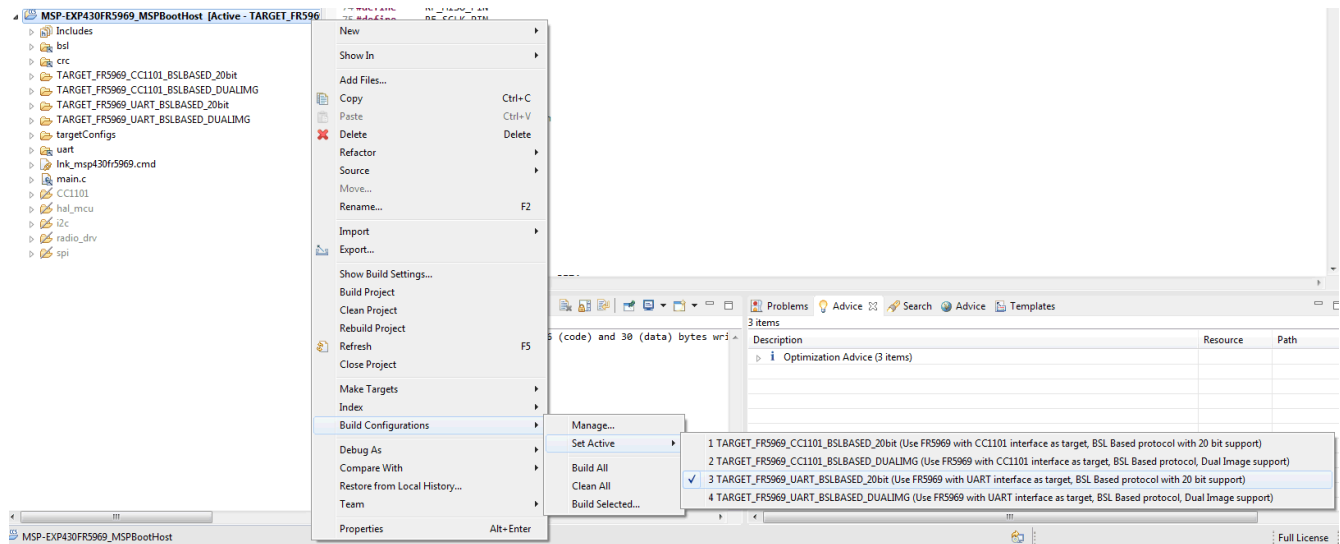
**Table 5-1. eUSCI Peripheral Connections**

CI	Pin	MSP Derivative		
		MSP430FR5969	MSP430FR5994	MSP430FR2433
UART	RXD	P2.6/UCA1RXD	P6.1/UCA3RXD	P1.5/UCA0RXD
	TXD	P2.5/UCA1TXD	P6.0/UCA3TXD	P1.4/UCA0TXD
	GND			
SPI (CC110x)	MISO	P1.7/UCB0SOMI	P5.1/UCB1SOMI	P2.5/UCA1SOMI
	MOSI	P1.6/UCB0SIMO	P5.0/UCB1SIMO	P2.6/UCA1SIMO
	CLK	P2.2/UCB0CLK	P5.2/UCB1CLK	P2.4/UCA1CLK
	SS	P3.0	P4.4	P2.2

### 5.2 Building the Host Project

The host project can be built following the next steps:

1. Import the project to CCS. The project files are located in MSPBoot\Host\ <host>\CCS, where <host> is the variant of the LaunchPad development kit (MSP-EXP430FR5969, MSP-EXP430FR5994, or MSP-EXP430FR2433).
2. Select the target derivative. This can be selected using the different target configurations in CCS (see [Figure 5-1](#)).



**Figure 5-1. Target Selection for Host Project in CCS**

- Build and download the application. Only the host LaunchPad development kit should be connected to the PC at this time to avoid FET target confusion in CCS.

Prebuilt images are included, but target Applications can be replaced or updated by following the procedure described in [Section 4.3.1](#) and [Section 4.3.2](#).

### 5.3 Running the Demo

The host LaunchPad development kit project sends two different images to the target device, using a push button for user interaction. USB connection to a computer is not required on either LaunchPad development kit to run the demo; however, each kit should be powered either by a USB connection through the eZ-FET or with a steady 3.3-V external power supply to the V<sub>CC</sub> and GND pins (ensure that the eZ-FET is disconnected in this instance). Because both the host and target LaunchPad development kits are of the same derivative, it might be helpful to label each board accordingly to avoid confusion. The demo is run using these steps, regardless of communication type or image mode used:

- Build and download MSPBoot as described in [Section 4.3.1](#), and build App1 and App2.
- Convert App1 and App2 according to [Section 4.3.2](#).

#### Note

Batch file PrepareCCSOutput\_[FR derivative].bat shows how to convert to C and copy the output files. In this host implementation, the MSP430 MCU holds the target image without CRC, so it calculates the CRC value assuming that unimplemented locations are 0xFF.

- Build and download the host application as described in [Section 5.2](#).
- Connect the boards according to the desired communication type (UART as described in [Section 5.1](#) or one of the CC110x solutions described in [Section 4.2](#)).
- Reset and execute code in both devices.
- To enter the target bootloader mode (indicated by both LED1 and LED2 remaining on):
  - If the target does not have a valid application (default), the target stays in bootloader mode.
  - Bootloader mode can be forced in hardware by pressing and holding the S2 button on the target device while pressing and releasing the reset button.

- c. If running an application:
  - i. APP1 jumps to bootloader mode when the S2 button is pressed on the target device.
  - ii. APP2 jumps to bootloader mode when it receives the Force Boot command (supported only if CI PHY-DL is shared).
7. Press the S1 button on the host board. The host device performs the following sequence of commands:
  - a. Toggles LED1 twice.
  - b. Sends “Force Boot” command (0xAA).
    - i. If the target device is already in bootloader mode, it discards the packet, because the CRC is incorrect.
    - ii. If the target is running APP2, the target device enters bootloader mode.
  - c. Requests the bootloader version (sends the TX\_VERSION command).
    - i. If the target response is 0xA0 (expected from BSL protocol), the host continues.
    - ii. If the target response is any other value, the host aborts transaction.
  - d. Erases the target application area (sends the ERASE\_APP command).
  - e. Sends APP1 (uses the RX\_DATA\_BLOCK commands).
  - f. Programs CRC of APP1 (uses the RX\_DATA\_BLOCK command).
  - g. Forces the target application to run (sends the JUMP2APP command).
  - h. Toggles LED1 twice to indicate successful transfer, and keeps LED1 on to show that the host is now ready to send APP2.
8. Target starts running APP1 upon completion of transfer.
  - a. The target device blinks LED1.
  - b. LED1 blinks at a periodic interval using the timer.
  - c. Press the S2 button on the target board to enter bootloader mode.
9. With the target in bootloader mode, press S2 button on the host board to send APP2. When finished and done toggling, LED1 of the host board stays off to indicate that APP1 is now ready to be sent.
10. Target starts running APP2 upon completion of transfer.
  - a. The target device blinks LED2.
  - b. Press the S2 button on the target board to toggle LED2.
  - c. Because the CI is initialized, the host can send a Force Boot command to force bootloader mode in the target device at the start of a new transfer sequence.
11. Press the S1 button on the host to start a new sequence sending APP1 again.

Dual-image mode contains a brief pause from the host after the transfer is complete while it validates the download area, transfers the memory into the application space, and erases the download area after the application area is validated by a CRC-CCITT check.

---

#### Note

Due to a pin conflict on the MSP-EXP430FR2433, disconnect LED2 from P1.1 by removing the jumper and physically wire to P1.2, instead.

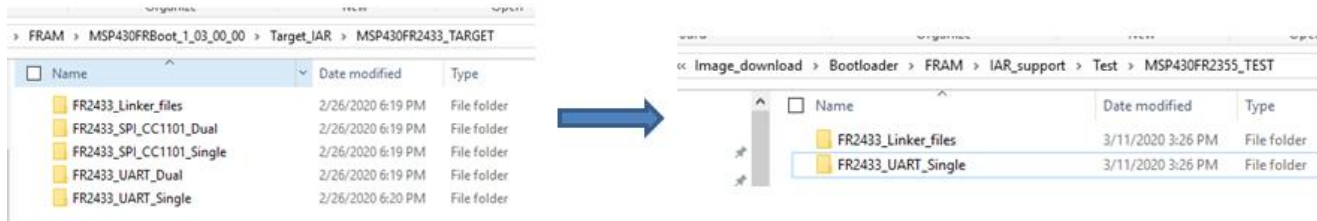
---



## 6 Porting the target side example projects to other MSP430FR devices

This section lists an example of steps to porting the target side example projects to other MSP430FR devices. Take the MSP430FR2355 in IAR and use UART single image mode as an example.

1. Choose FR2433\_UART\_Single target demo projects as the template. The demo project is located at "MSP430FRBoot\_<version>\Target\_IAR\MSP430FR2433\_TARGET\FR2433\_UART\_Single".
2. Copy the "FR2344\_UART\_Single" project and the linker folder named "FR2433\_Linker\_files" into another folder, as shown in Figure 6-1. For MSP430fr2xx4xx family devices, choose the MSP430FR2433 target demo projects as a template. For MSP430FR5xx6xx family devices, choose the MSP430FR5969 target demo projects.



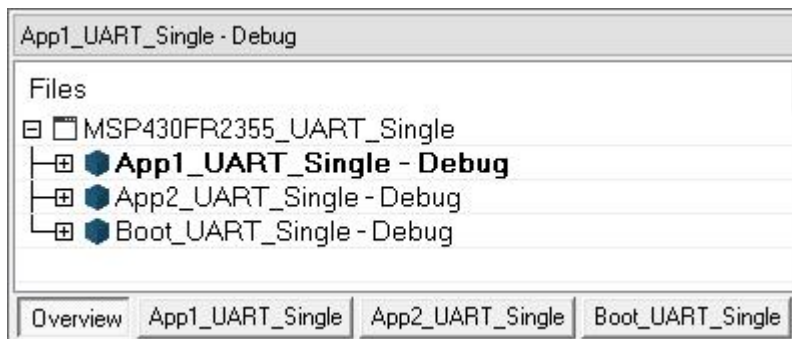
**Figure 6-1. Copy UART single project and the linker folder to other folder**

3. Open FR2344\_UART\_Single project folder. Change the workspace name from "MSP430FR2433\_UART\_Single" to "MSP430FR2355\_UART\_Single" (based on your device).



**Figure 6-2. Change the workspace name**

4. Open the workspace and the three included projects.
  - a. "App1\_UART\_Single" uses a button to jump from application to boot code.
  - b. "App2\_UART\_Single" uses UART to receive a jump command, then jump from application to boot code.
  - c. "Boot\_UART\_Single" is the boot side code.



**Figure 6-3. Projects in the workspace**

5. Modify the projects based on your application case, like different PGIOs or UART interfaces.
  - a. Choose boot project "Boot\_UART\_Single" and search "//Need to change" in the whole project to find the files that need to be modified, as shown below.

	Line	String
rgle\Comm\PHY_DataLink\TI_MSPBoot_CL_PHYDL_USQI_UART.c	47	//Need to change
rgle\main.c	50	//Need to change
rgle\TI_MSPBoot_Config.h	43	//Need to change

Found 3 instances. Searched in 15 files.

**Figure 6-4. Find results in the boot project**

- b. Open the files that need to be changed.
- c. Search "//Simple change" in each file to find the area that needs to be modified, based on your application. [Figure 6-5](#) shows a search in "main.c". You need to change the registers and GPIOs based on your application. (For more details about how to make the change, you can compare the differences between MSP430FR2433, MSP430FR5969, and MSP430FR5994)

```

102 //Simple change start
103     P1DIR |= BIT0; // Used for d
104     P1DIR |= BIT1;
105     P1OUT |= BIT0;
106     P1OUT |= BIT1;
107 //Simple change end
    
```

**Figure 6-5. Find the result of the simple change to change the GPIO**

- d. Make the same modification in the "App1\_UART\_Single" or "App2\_UART\_Single" projects with the boot project as steps [5.a](#) to [5.c](#).
6. Open the folder "Utilities\linkerGen" and read the file "Readme.txt" to know how to generate the linker files based on your device.

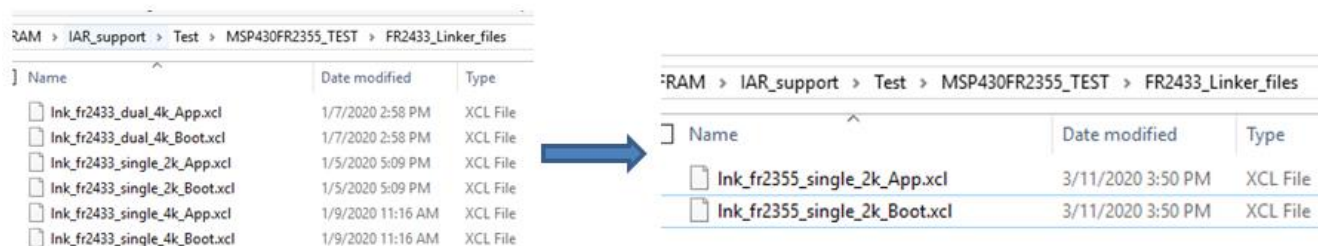
```

output_filename: lnk_fr2355_single_2k_xxx.cmd
lnk_filename: lnk_msp430fr2355.cmd
boot_size: 0x800
Device name: msp430fr2355
2020-03-11

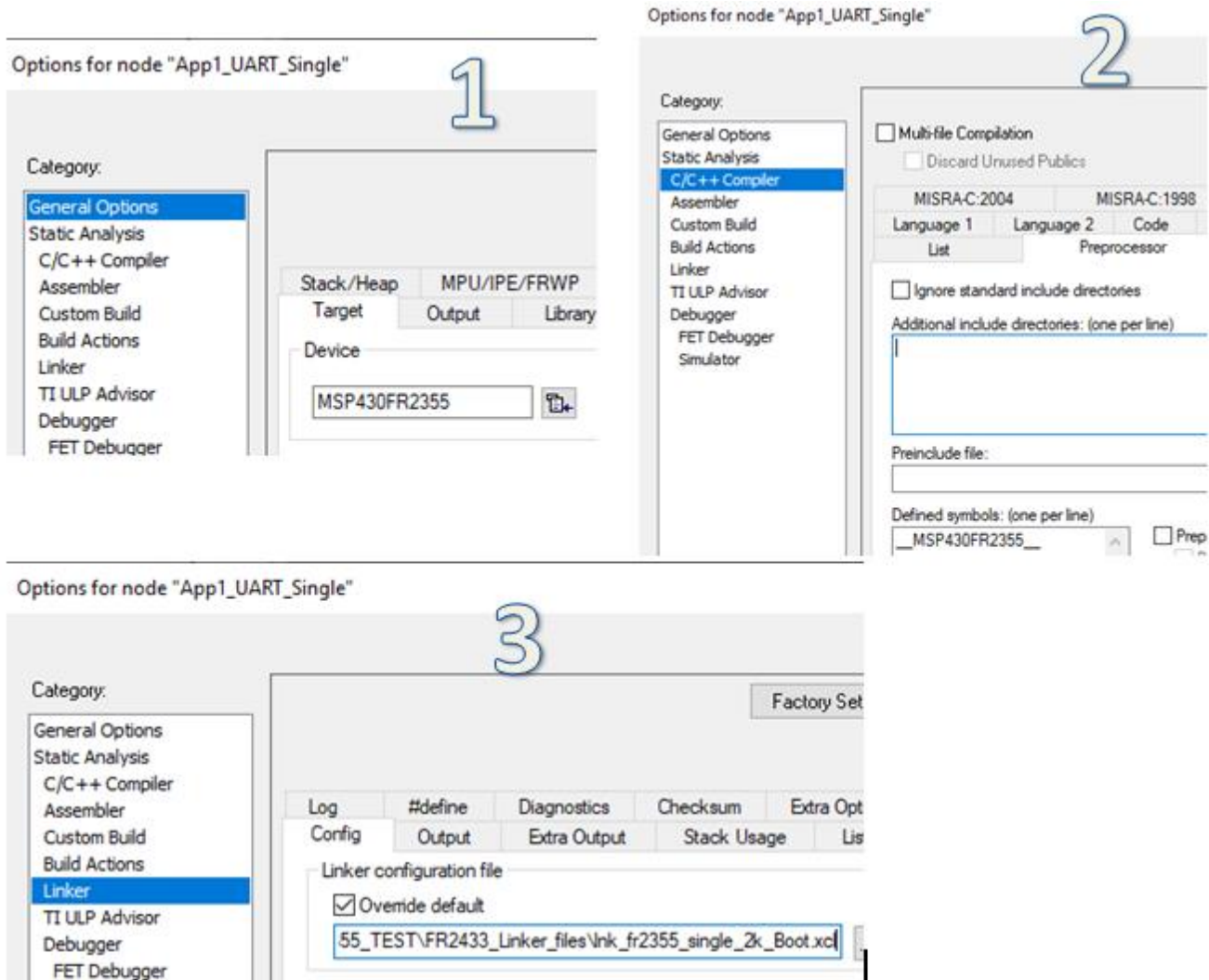
App start: 0x8000
appl_end_addr: 0xf7ff
flex_start: 0x0
flex_end_addr: 0xf800
vector_addr: 0xf7a2
flex_type = download
The two linker files for boot side and application side are generated!
Press any key to continue . . .
    
```

**Figure 6-6. Generate the linker file successfully MSP430FR2355**

7. Delete the linker files for MSP430FR2433 in the linker folder "FR2433\_Linker\_files" and copy the newly generated linker files into this folder.

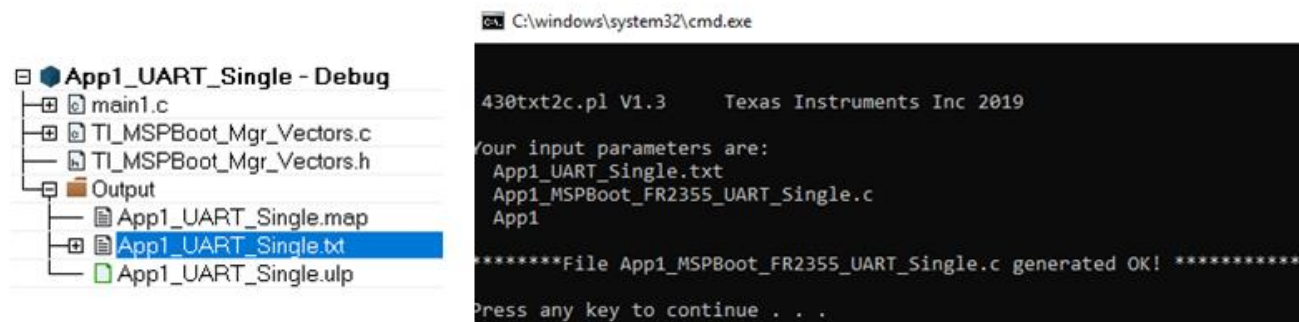

**Figure 6-7. Move the linker file to the folder**

8. Open the boot project "Boot\_UART\_Single" options.
  - a. Change the device to MSP430FR2355 (based on your device).
  - b. Change the definition of "\_\_MSP430FR2433\_\_" to "\_\_MSP430FR2355\_\_".
  - c. Change the newly genreated linker file's name.
  - d. Do steps 8.a through 8.c with the application's project.



**Figure 6-8. Configure the project option**

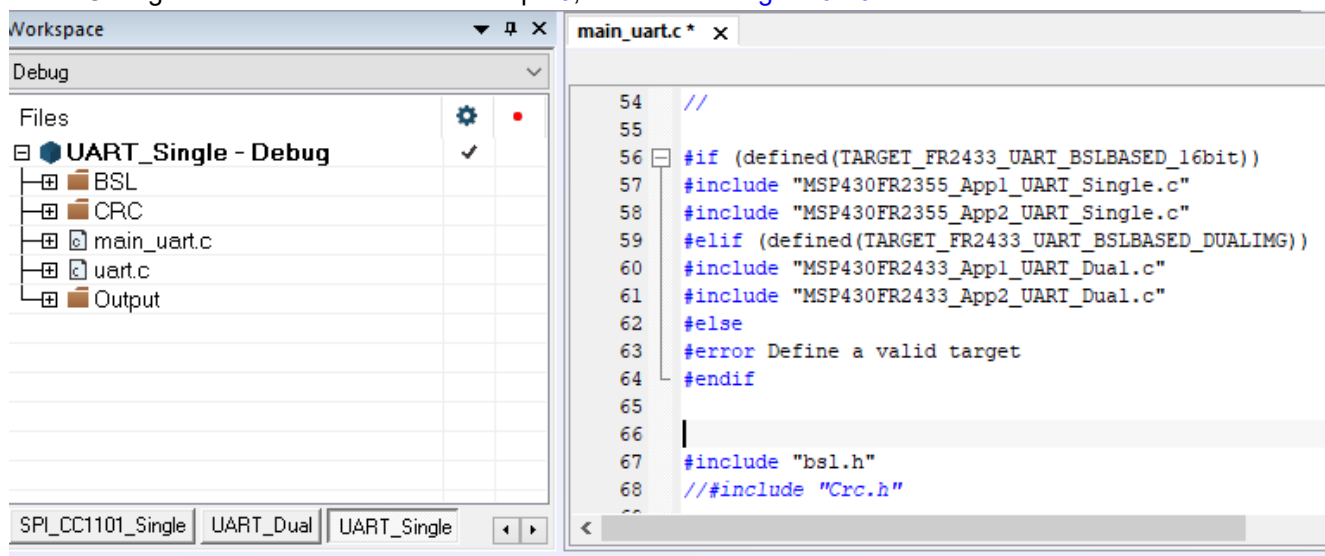
9. Build the application project to generate the .txt file.
10. Convert the .txt file into a .c file by using the tools in folder "Utilities\430txt\_converter". This makes the image file easy for the host project to use.



**Figure 6-9. Generate the .txt file and convert it to a .c file**

11. Copy the .c files generated by the converter into the host project folder "MSP430FR2433\_Host\TargetApps"
12. Open the host project named "UART\_Single".

- a. Change the .c file's name used in step 10, as shown in Figure 6-10



**Figure 6-10. Change the image name in the host**

- b. Change the start address of the CRC\_Addr to 0x8000, which is the start FRAM address of MSP430FR2355, and the App\_StartAddress to 0x8002. (For CCS projects, App\_StartAddress should be change to 0x8003.)

```

74 #if (defined(TARGET_FR2355_UART_BSLBASED_16bit))
75     static uint16_t CRC_Addr = 0x8000;
76     static uint16_t App_StartAddress = 0x8002;
77     static uint16_t App_EndAddress = 0xF7FF;
    
```

**Figure 6-11. Change the address information**

- c. If you only have App1 and don't have App2, you can comment the code "sentBSLFlipFlop = ! sentBSLFlipFop;" to make the host download App1 only.
13. Test the code in hardware. If you want to debug your application code, you can use the normal linker file first (maybe some variable undefined error, just comment them). After debugging, change it back to the linker file generated by the Python scripeter.

## 7 References

1. [MSPBoot – Main Memory Bootloader for MSP430 Microcontrollers](#)
2. [MSP430™ FRAM Devices Bootloader \(BSL\) User's Guide](#)
3. [MSP430FR58xx, MSP430FR59xx, MSP430FR68xx, and MSP430FR69xx Family User's Guide](#)
4. [MSP430FR4xx and MSP430FR2xx Family User's Guide](#)
5. [CC1101 Low-Power Sub-1 GHz RF Transceiver](#)

## 8 Revision History

NOTE: Page numbers for previous revisions may differ from page numbers in the current version.

### Changes from March 31, 2020 to July 21, 2020

### Page

• Updated list of IDEs and number of devices in <a href="#">Section 3.1</a> .....	16
• Changed "Perl script" to "Python script" in <a href="#">Section 4.3.2</a> .....	21
• Updated a list of start addresses.....	25
• Updated <a href="#">Section 6</a> .....	25

## IMPORTANT NOTICE AND DISCLAIMER

TI PROVIDES TECHNICAL AND RELIABILITY DATA (INCLUDING DATA SHEETS), DESIGN RESOURCES (INCLUDING REFERENCE DESIGNS), APPLICATION OR OTHER DESIGN ADVICE, WEB TOOLS, SAFETY INFORMATION, AND OTHER RESOURCES "AS IS" AND WITH ALL FAULTS, AND DISCLAIMS ALL WARRANTIES, EXPRESS AND IMPLIED, INCLUDING WITHOUT LIMITATION ANY IMPLIED WARRANTIES OF MERCHANTABILITY, FITNESS FOR A PARTICULAR PURPOSE OR NON-INFRINGEMENT OF THIRD PARTY INTELLECTUAL PROPERTY RIGHTS.

These resources are intended for skilled developers designing with TI products. You are solely responsible for (1) selecting the appropriate TI products for your application, (2) designing, validating and testing your application, and (3) ensuring your application meets applicable standards, and any other safety, security, regulatory or other requirements.

These resources are subject to change without notice. TI grants you permission to use these resources only for development of an application that uses the TI products described in the resource. Other reproduction and display of these resources is prohibited. No license is granted to any other TI intellectual property right or to any third party intellectual property right. TI disclaims responsibility for, and you will fully indemnify TI and its representatives against, any claims, damages, costs, losses, and liabilities arising out of your use of these resources.

TI's products are provided subject to [TI's Terms of Sale](#) or other applicable terms available either on [ti.com](http://ti.com) or provided in conjunction with such TI products. TI's provision of these resources does not expand or otherwise alter TI's applicable warranties or warranty disclaimers for TI products.

TI objects to and rejects any additional or different terms you may have proposed.

Mailing Address: Texas Instruments, Post Office Box 655303, Dallas, Texas 75265  
Copyright © 2022, Texas Instruments Incorporated