

ADS9212 アナログフロントエンド内蔵、18ビット、8MSPS、デュアル同時サンプリング ADC

1 特長

- 2 チャンネル、18 ビット、アナログフロントエンド内蔵 ADC:
 - デュアル同時サンプリング
 - 1MΩ 固定入力インピーダンスのフロントエンド
- プログラム可能なアナログ入力範囲:
 - ±12V、±10V、±7V、±5V、±3.5V、±2.5V
 - シングルエンドおよび差動入力
 - ±12V の同相電圧範囲
 - 入力過電圧保護: 最大 ±18V
- アナログ入力帯域幅をユーザーが選択可能:
 - 21kHz と 400kHz
- 低ドリフトの高精度リファレンスを内蔵
 - ADC リファレンス: 4.096 V
 - 外部回路用の 2.5V リファレンス出力
- フルスループットでの非常に優れた AC および DC 性能:
 - DNL: ±0.5LSB、INL: ±0.8LSB
 - 信号対雑音比: 92dB、THD: -113dB
- 電源:
 - アナログおよびデジタル: 5V および 1.8V
 - デジタルインターフェイス: 1.2V~1.8V
- 温度範囲: -40°C~+125°C

2 アプリケーション

- 半導体試験装置
- データアキュイジション (DAQ)
- ソースメジャーユニット (SMU)

3 概要

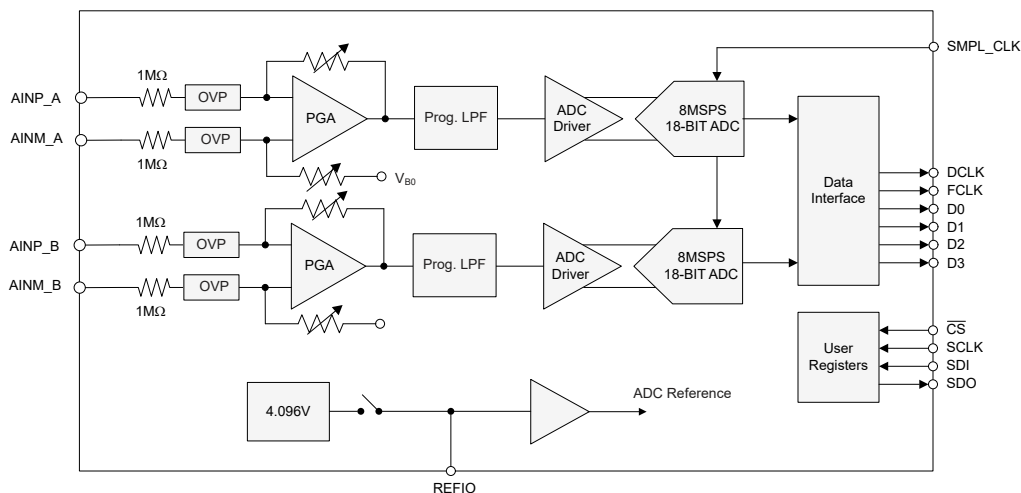
ADS9212 は、デュアル同時サンプリング、18 ビットの逐次比較型 (SAR) A/D コンバータ (ADC) を使用した 2 チャンネルのデータアキュイジション (DAQ) システムです。ADS9212 は、入力クランプ、1MΩ の入力インピーダンス、独立したプログラマブルゲインアンプ (PGA)、プログラム可能なローパスフィルタ、ADC 入力ドライバを持つ完全なアナログフロントエンドを各チャンネルに備えています。このデバイスは、低ドリフトで高精度の基準電圧と、ADC を駆動するためのバッファも備えています。1.2V ~ 1.8V での動作をサポートする高速デジタルインターフェイスにより、ADS9212 を高速インターフェイスで使用できます。

ADS9212 は、±12V、±10V、±7V、±5V、±3.5V、±2.5V のバイポーラ入力に対応しています。入力インピーダンスが高いため、センサや変圧器と直接接続でき、外付けのドライバ回路が必要ありません。高い性能と精度を備えており、かつレイテンシなしで変換できる ADS9212 の設計は、多様な産業用アプリケーションに適しています。

パッケージ情報

| 部品番号 | パッケージ ⁽¹⁾ | パッケージサイズ ⁽²⁾ |
|---------|----------------------|-------------------------|
| ADS9212 | RSH (VQFN, 56) | 7mm × 7mm |

- 詳細については、[セクション 11](#) を参照してください。
- パッケージサイズ (長さ × 幅) は公称値であり、該当する場合はピンも含まれます。



デバイスのブロック図



Table of Contents

| | | | |
|--|----|--|----|
| 1 特長 | 1 | 6.5 Programming..... | 29 |
| 2 アプリケーション | 1 | 7 Register Map | 34 |
| 3 概要 | 1 | 7.1 Register Bank 0 | 34 |
| 4 Pin Configuration and Functions | 3 | 7.2 Register Bank 1..... | 37 |
| 5 Specifications | 5 | 7.3 Register Bank 2 | 52 |
| 5.1 Absolute Maximum Ratings..... | 5 | 8 Application and Implementation | 55 |
| 5.2 ESD Ratings..... | 5 | 8.1 Application Information..... | 55 |
| 5.3 Recommended Operating Conditions..... | 6 | 8.2 Typical Application..... | 56 |
| 5.4 Thermal Information..... | 6 | 8.3 Power Supply Recommendations..... | 58 |
| 5.5 Electrical Characteristics..... | 7 | 8.4 Layout..... | 58 |
| 5.6 Timing Requirements..... | 10 | 9 Device and Documentation Support | 60 |
| 5.7 Switching Characteristics..... | 11 | 9.1 ドキュメントの更新通知を受け取る方法..... | 60 |
| 5.8 Timing Diagrams..... | 11 | 9.2 サポート・リソース..... | 60 |
| 5.9 Typical Characteristics..... | 14 | 9.3 Trademarks..... | 60 |
| 6 Detailed Description | 19 | 9.4 静電気放電に関する注意事項..... | 60 |
| 6.1 Overview..... | 19 | 9.5 用語集..... | 60 |
| 6.2 Functional Block Diagram..... | 19 | 10 Revision History | 60 |
| 6.3 Feature Description..... | 20 | 11 Mechanical, Packaging, and Orderable Information | 60 |
| 6.4 Device Functional Modes..... | 28 | | |

4 Pin Configuration and Functions

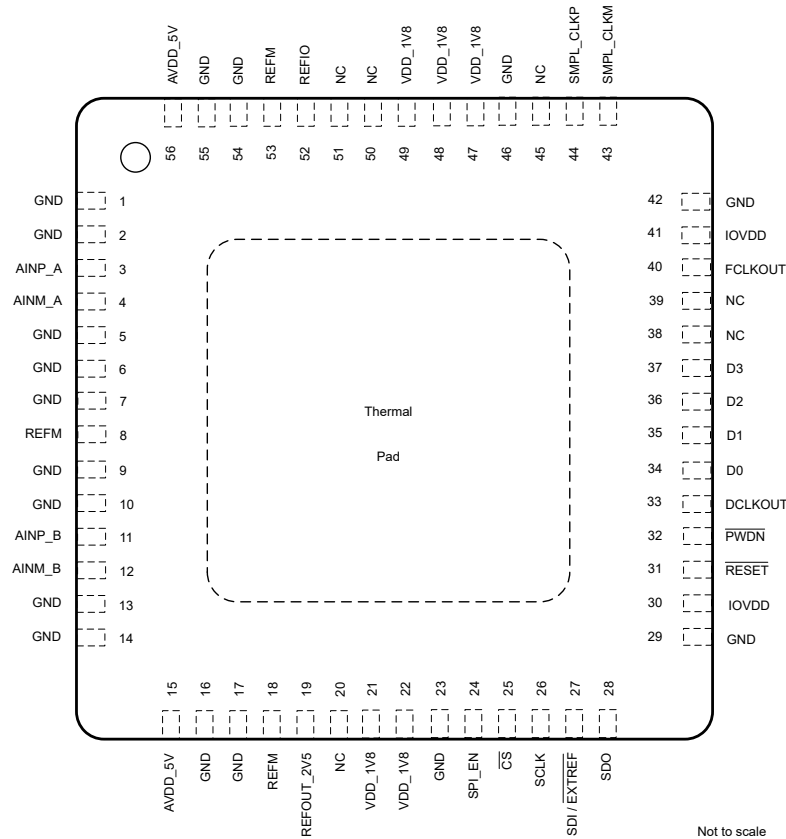


図 4-1. RSH Package, 56-Pin VQFN (Top View)

表 4-1. Pin Functions

| PIN | | TYPE ⁽¹⁾ | DESCRIPTION |
|----------|--|---------------------|---|
| NAME | NO. | | |
| AINM_A | 4 | AI | Analog input for ADC A, negative input. |
| AINP_A | 3 | AI | Analog input ADC A, positive input. |
| AINM_B | 12 | AI | Analog input ADC B, negative input. |
| AINP_B | 11 | AI | Analog input ADC B, positive input. |
| AVDD_5V | 15, 56 | P | 5V analog supply. Connect 1µF and 0.1µF decoupling capacitor to AGND. |
| CS | 25 | DI | Chip-select input for configuration of SPI interface; active low. This pin has an internal 100kΩ pullup resistor to the digital interface supply. |
| D0 | 34 | DO | Serial output data lane 0. |
| D1 | 35 | DO | Serial data output lane 1. |
| D2 | 36 | DO | Serial data output lane 2. |
| D3 | 37 | DO | Serial data output lane 3. |
| DCLKOUT | 33 | DO | Clock output for the data interface. |
| DVDD_1V8 | 22, 47, 48 | P | Digital supply pin. Connect 1µF and 0.1µF decoupling capacitors to DGND. |
| FCLKOUT | 40 | DO | Frame synchronization output for data interface. |
| GND | 1, 2, 5, 6, 7, 9, 10, 13, 14, 16, 17, 23, 46, 54, 55 | P | Ground. |
| IOGND | 29, 42 | P | Digital interface ground. Connect to GND. |

表 4-1. Pin Functions (続き)

| PIN | | TYPE ⁽¹⁾ | DESCRIPTION |
|-------------------------|---------------------------|---------------------|--|
| NAME | NO. | | |
| IOVDD | 30, 41 | P | Digital I/O supply for the data interface. Connect 1μF and 0.1μF decoupling capacitors to IOGND. |
| NC | 20, 38, 39, 45, 50, 51 | — | Not connected. No external connection. |
| $\overline{\text{PWN}}$ | 32 | DI | Power-down control; active low. This pin has an internal 100kΩ pullup resistor to the digital interface supply. |
| REFIO | 52 | AI/AO | This pin acts as an internal reference output when the internal reference is enabled. This pin functions as an input pin for the external reference when internal reference is disabled. Connect a 10μF decoupling capacitor to the REFM pins. |
| REFM | 8, 18, 53 | AI | Reference ground potential. Connect to GND. |
| REFOUT_2V5 | 19 | AO | 2.5V reference output. Connect a decoupling 10μF capacitor to the REFM pins. |
| RESET | 31 | DI | Reset input for the device; active low. This pin has an internal 100kΩ pullup resistor to the digital interface supply. |
| SCLK | 26 | DI | Serial clock input for the configuration interface. This pin has an internal 100kΩ pulldown resistor to the digital interface ground. |
| SDI | 27 | DI | This pin is a multifunction logic input; pin function is determined by the SPI_EN pin. This pin has an internal 100kΩ pulldown resistor to IOGND. SPI_EN = 0b: This pin is the logic input to select between the internal or external reference. Connect this pin to IOGND for the external reference. Connect this pin to IOVDD for the internal reference. SPI_EN = 1b: Serial data input for the configuration interface. |
| SDO | 28 | DO | Serial data output for the configuration interface. |
| SMPL_CLKP | 44 | DI | Single-ended ADC sampling clock input. This pin is the positive input for the differential ADC sampling clock. |
| SMPL_CLKM | 43 | DI | Connect this pin to GND for a single-ended ADC sampling clock input. This pin is the negative input for the differential ADC sampling clock. |
| SPI_EN | 24 | DI | Logic input to enable the configuration SPI interface ($\overline{\text{CS}}$, SCLK, SDI, and SDO). This pin has internal 100kΩ pullup resistor to the digital interface supply. |
| VDD_1V8 | 21, 22, 47, 48, 49 | P | 1.8V power-supply. Connect 1μF and 0.1μF decoupling capacitors to GND. |
| Thermal pad | — | P | Exposed thermal pad; connect to AGND. |

(1) I = input, O = output, I/O = input or output, G = ground, and P = power.

5 Specifications

5.1 Absolute Maximum Ratings

over operating ambient temperature range (unless otherwise noted)⁽¹⁾

| | MIN | MAX | UNIT |
|--|------------|---------------|------|
| AVDD_5V to GND | -0.3 | 6 | V |
| VDD_1V8 to GND | -0.3 | 2.1 | V |
| IOVDD to GND | -0.3 | 2.1 | V |
| AINP_x and AINM_x to GND | -18 | 18 | V |
| REFIO to REFM | REFM - 0.3 | AVDD_5V + 0.3 | V |
| REFM to GND | GND - 0.3 | GND + 0.3 | V |
| Digital inputs to GND | GND - 0.3 | 2.1 | V |
| Input current to any pin except supply pins ⁽²⁾ | -10 | 10 | mA |
| Junction temperature, T _J | -40 | 150 | °C |
| Storage temperature, T _{stg} | -60 | 150 | °C |

- (1) Operation outside the Absolute Maximum Ratings may cause permanent device damage. *Absolute Maximum Ratings* do not imply functional operation of the device at these or any other conditions beyond those listed under *Recommended Operating Conditions*. If used outside the *Recommended Operating Conditions* but within the *Absolute Maximum Ratings*, the device may not be fully functional, and this may affect device reliability, functionality, performance, and shorten the device lifetime.
- (2) Pin current must be limited to 10mA or less.

5.2 ESD Ratings

| | | | VALUE | UNIT |
|--------------------|-------------------------|---|-------|------|
| V _(ESD) | Electrostatic discharge | Human body model (HBM), per ANSI/ESDA/JEDEC JS-001, all pins ⁽¹⁾ | ±2000 | V |
| | | Charged device model (CDM), per ANSI/ESDA/JEDEC JS-002, all pins ⁽²⁾ | ±500 | |

- (1) JEDEC document JEP155 states that 500V HBM allows safe manufacturing with a standard ESD control process.
- (2) JEDEC document JEP157 states that 250V CDM allows safe manufacturing with a standard ESD control process.

5.3 Recommended Operating Conditions

over operating free-air temperature range (unless otherwise noted)

| PARAMETER | | TEST CONDITIONS | MIN | TYP | MAX | UNIT |
|--------------------------|---|----------------------|-------|-------|-------|------|
| POWER SUPPLY | | | | | | |
| AVDD_5V | Analog power supply | AVDD_5V to GND, 5V | 4.75 | 5 | 5.25 | V |
| VDD_1V8 | Analog power supply | VDD_1V8 to GND, 1.8V | 1.75 | 1.8 | 1.85 | V |
| IOVDD | Digital interface power supply | IOVDD to GND | 1.15 | 1.8 | 1.85 | V |
| REFERENCE VOLTAGE | | | | | | |
| V _{REF} | Reference voltage to the ADC | External reference | 4.092 | 4.096 | 4.100 | V |
| ANALOG INPUTS | | | | | | |
| V _{FSR} | Full-scale input range | RANGE_CHx = 0010b | -2.5 | | 2.5 | V |
| | | RANGE_CHx = 0001b | -3.5 | | 3.5 | |
| | | RANGE_CHx = 0000b | -5 | | 5 | |
| | | RANGE_CHx = 0011b | -7 | | 7 | |
| | | RANGE_CHx = 0100b | -10 | | 10 | |
| | | RANGE_CHx = 0101b | -12 | | 12 | |
| AINP_x | Operating input voltage, positive input | | -17 | | 17 | V |
| AINM_x | Operating input voltage, negative input | | -17 | | 17 | V |
| TEMPERATURE RANGE | | | | | | |
| T _A | Ambient temperature | | -40 | 25 | 125 | °C |

5.4 Thermal Information

| THERMAL METRIC ⁽¹⁾ | | ADS9212 | UNIT |
|-------------------------------|--|------------|------|
| | | RSH (VQFN) | |
| | | 56 PINS | |
| R _{θJA} | Junction-to-ambient thermal resistance | 23.2 | °C/W |
| R _{θJC(top)} | Junction-to-case (top) thermal resistance | 10.5 | °C/W |
| R _{θJB} | Junction-to-board thermal resistance | 6.1 | °C/W |
| Ψ _{JT} | Junction-to-top characterization parameter | 0.1 | °C/W |
| Ψ _{JB} | Junction-to-board characterization parameter | 6.0 | °C/W |
| R _{θJC(bot)} | Junction-to-case (bottom) thermal resistance | 0.9 | °C/W |

- (1) For more information about traditional and new thermal metrics, see the [Semiconductor and IC Package Thermal Metrics](#) application note.

5.5 Electrical Characteristics

at AVDD_5V = 4.75V to 5.25V, VDD_1V8 = 1.75V to 1.85V, IOVDD = 1.15V to 1.85V, V_{REF} = 4.096V (external), wide-common-mode disabled for analog input ranges ±2.5V, ±3.5V, and ±5V, wide-common-mode enabled for analog input ranges ±7V, ±10V, and ±12V, and maximum throughput (unless otherwise noted); minimum and maximum values at T_A = –40°C to +125°C; typical values at T_A = 25°C

| PARAMETER | | TEST CONDITIONS | MIN | TYP | MAX | UNIT |
|----------------------------|---|--|-------|-------|------|--------|
| ANALOG INPUTS | | | | | | |
| R _{IN} | Input impedance | All input ranges | 0.85 | 1 | 1.15 | MΩ |
| | Input impedance thermal drift | All input ranges | | 10 | 25 | ppm/°C |
| | Input capacitance | | | 10 | | pF |
| ANALOG INPUT FILTER | | | | | | |
| BW _(-3 dB) | Analog input LPF bandwidth –3 dB | All input ranges, low-bandwidth filter | | 21 | | kHz |
| | | RANGE = ±2.5V, wide-bandwidth filter | | 182 | | |
| | | RANGE = ±3.5V, wide-bandwidth filter | | 240 | | |
| | | RANGE = ±5V, wide-bandwidth filter | | 320 | | |
| | | RANGE = ±7V, wide-bandwidth filter | | 400 | | |
| | | RANGE = ±10V, wide-bandwidth filter | | 385 | | |
| | | RANGE = ±12V, wide-bandwidth filter | | 375 | | |
| DC PERFORMANCE | | | | | | |
| | Resolution | No missing codes | | 18 | | Bits |
| DNL | Differential nonlinearity ⁽³⁾ | All ranges, wide-CM enabled and disabled | –0.99 | ±0.5 | 0.99 | LSB |
| INL | Integral nonlinearity | All ranges, wide-CM enabled and disabled, T _A = 0°C to 70°C | –4 | ±0.8 | 4 | LSB |
| | | All ranges, wide-CM enabled and disabled, T _A = –40°C to 125°C | –4.5 | ±0.8 | 4.5 | LSB |
| | Offset error ^{(2) (5)} | RANGE = ±2.5V | | ±90 | | LSB |
| | | RANGE = ±2.5V, wide-CM enabled | | ±120 | | |
| | | RANGE = ±3.5V | | ±60 | | |
| | | RANGE = ±3.5V, wide-CM enabled | | ±80 | | |
| | | RANGE = ±5V | | ±10 | | |
| | | RANGE = ±5V, wide-CM enabled | | ±60 | | |
| | | RANGE = ±7V | | ±35 | | |
| | | RANGE = ±10V | | ±10 | | |
| | RANGE = ±12V | | ±15 | | | |
| | Offset error thermal drift ^{(2) (4)} | All ranges, wide-CM enabled and disabled | | 0.5 | 2 | ppm/°C |
| | Gain error ^{(2) (5)} | RANGE = ±2.5V, ±3.5V, and ±5V | | ±0.02 | | %FSR |
| | | RANGE = ±2.5V, ±3.5V, and ±5V, wide-CM enabled | | ±0.04 | | |
| | | RANGE = ±7V, ±10V, ±12V | | ±0.02 | | |
| | Gain error thermal drift ^{(2) (4)} | Wide-CM enabled and disabled, all ranges | | 0.7 | 3 | ppm/°C |

5.5 Electrical Characteristics (続き)

at AVDD_5V = 4.75V to 5.25V, VDD_1V8 = 1.75V to 1.85V, IOVDD = 1.15V to 1.85V, V_{REF} = 4.096V (external), wide-common-mode disabled for analog input ranges ±2.5V, ±3.5V, and ±5V, wide-common-mode enabled for analog input ranges ±7V, ±10V, and ±12V, and maximum throughput (unless otherwise noted); minimum and maximum values at T_A = -40°C to +125°C; typical values at T_A = 25°C

| PARAMETER | | TEST CONDITIONS | MIN | TYP | MAX | UNIT |
|---------------------------------|--|---|-------|-------|-----|--------|
| AC PERFORMANCE | | | | | | |
| SNR | Signal-to-noise ratio, low-noise filter | RANGE = ±2.5V, f _{IN} = 2kHz | 86.7 | 89.5 | | dBFS |
| | | RANGE = ±3.5V, f _{IN} = 2kHz | 87.8 | 90.5 | | |
| | | RANGE = ±5V, f _{IN} = 2kHz | 88.5 | 91.4 | | |
| | | RANGE = ±7V, f _{IN} = 2kHz | 89.3 | 91.3 | | |
| | | RANGE = ±10V, f _{IN} = 2kHz | 89.9 | 91.8 | | |
| | | RANGE = ±12V, f _{IN} = 2kHz | 90 | 92 | | |
| | Signal-to-noise ratio, wide-bandwidth filter | RANGE = ±2.5V, f _{IN} = 2kHz | 79 | 82.5 | | |
| | | RANGE = ±3.5V, f _{IN} = 2kHz | 80 | 83.5 | | |
| | | RANGE = ±5V, f _{IN} = 2kHz | 80.5 | 84.5 | | |
| | | RANGE = ±7V, f _{IN} = 2kHz | 81.5 | 83.5 | | |
| | | RANGE = ±10V, f _{IN} = 2kHz | 83 | 85 | | |
| | | RANGE = ±12V, f _{IN} = 2kHz | 83.5 | 85.5 | | |
| SINAD | Signal-to-noise + distortion ratio, low-noise filter | RANGE = ±2.5V, f _{IN} = 2kHz | 85.7 | 88.9 | | dB |
| | | RANGE = ±3.5V, f _{IN} = 2kHz | 86.7 | 89.9 | | |
| | | RANGE = ±5V, f _{IN} = 2kHz | 87.3 | 90.7 | | |
| | | RANGE = ±7V, f _{IN} = 2kHz | 88.0 | 90.6 | | |
| | | RANGE = ±10V, f _{IN} = 2kHz | 88.5 | 91.1 | | |
| | | RANGE = ±12V, f _{IN} = 2kHz | 88.6 | 91.3 | | |
| | Signal-to-noise + distortion ratio, wide-bandwidth filter | RANGE = ±2.5V, f _{IN} = 2kHz | 78.6 | 82.2 | | |
| | | RANGE = ±3.5V, f _{IN} = 2kHz | 79.5 | 83.2 | | |
| | | RANGE = ±5V, f _{IN} = 2kHz | 80.0 | 84.2 | | |
| | | RANGE = ±7V, f _{IN} = 2kHz | 80.9 | 83.2 | | |
| | | RANGE = ±10V, f _{IN} = 2kHz | 82.3 | 84.7 | | |
| | | RANGE = ±12V, f _{IN} = 2kHz | 82.8 | 85.1 | | |
| THD | Total harmonic distortion | All ranges, low-noise filter, f _{IN} = 2kHz | | -113 | | dB |
| | | All ranges, wide-bandwidth filter, f _{IN} = 2kHz | | -113 | | |
| SFDR | Spurious-free dynamic range | All ranges, f _{IN} = 2kHz | | 113 | | dB |
| | CMRR | at dc | | -70 | | dB |
| | Isolation crosstalk | at dc | | -100 | | dB |
| INTERNAL REFERENCE | | | | | | |
| V _{REF} ⁽¹⁾ | Voltage on REFIO pin (configured as output) | 1μF capacitor on REFIO pin, T _A = 25°C | 4.092 | 4.096 | 4.1 | V |
| | Reference temperature drift ⁽⁴⁾ | | | 10 | 25 | ppm/°C |

5.5 Electrical Characteristics (続き)

at AVDD_5V = 4.75V to 5.25V, VDD_1V8 = 1.75V to 1.85V, IOVDD = 1.15V to 1.85V, V_{REF} = 4.096V (external), wide-common-mode disabled for analog input ranges ±2.5V, ±3.5V, and ±5V, wide-common-mode enabled for analog input ranges ±7V, ±10V, and ±12V, and maximum throughput (unless otherwise noted); minimum and maximum values at T_A = –40°C to +125°C; typical values at T_A = 25°C

| PARAMETER | | TEST CONDITIONS | MIN | TYP | MAX | UNIT |
|----------------------------------|-----------------------------|--|-----------|-----------|-------|------|
| DIGITAL INPUTS | | | | | | |
| V _{IL} | Input low logic level | | –0.3 | 0.3 IOVDD | | V |
| V _{IH} | Input high logic level | | 0.7 IOVDD | | IOVDD | V |
| | Input current | | | 0.1 | | μA |
| | Input capacitance | | | 6 | | pF |
| LVDS SAMPLING CLOCK INPUT | | | | | | |
| V _{TH} | High-level input voltage | AC coupled | 100 | | | mV |
| | | DC coupled | 300 | | | |
| V _{TL} | Low-level input voltage | AC coupled | | | –100 | mV |
| | | DC coupled | | | –300 | |
| V _{ICM} | Input common-mode voltage | | 0.3 | 1.2 | 1.4 | V |
| DIGITAL OUTPUTS | | | | | | |
| V _{OL} | Output low logic level | I _{OL} = 500μA sink | 0 | 0.2 IOVDD | | V |
| V _{OH} | Output high logic level | I _{OH} = 500μA source | 0.8 IOVDD | | IOVDD | V |
| POWER SUPPLY | | | | | | |
| | Total power dissipation | Maximum throughput | | 232 | 304 | mW |
| I _{AVDD_5V} | Supply current from AVDD_5V | Maximum throughput, internal reference | | 26 | 32 | mA |
| | | Power-down | | 0.2 | 2 | |
| I _{VDD_1V8} | Supply current from VDD_1V8 | Maximum throughput, internal reference | | 50 | 70 | mA |
| | | Power-down | | 0.2 | 8 | |
| I _{IOVDD} | Supply current from IOVDD | Maximum throughput | | 7 | 10 | mA |
| | | Power-down | | 0.1 | 3 | |

- (1) Does not include the variation in voltage resulting from solder shift effects.
- (2) These specifications include full temperature range variation but not the error contribution from internal reference. Measured with single-ended inputs as described in [Wide Common-Mode Configuration for Single-Ended Inputs](#).
- (3) Wide-CM refers to wide-common-mode voltage at the analog inputs. See section on [Wide-Common-Mode Voltage Rejection Circuit](#) for more details.
- (4) Thermal drift is the difference between maximum and minimum error measured over the temperature range, divided by the temperature range.
- (5) Minimum and maximum specifications are applicable for low-bandwidth filter setting.

5.6 Timing Requirements

at AVDD_5V = 4.75V to 5.25V, VDD_1V8 = 1.75V to 1.85V, IOVDD = 1.15V to 1.85V, and maximum throughput (unless otherwise noted); minimum and maximum values at T_A = -40°C to +125°C; typical values at T_A = 25°C

| | | MIN | MAX | UNIT |
|--|---|----------------------------|----------------------------|------------------|
| CONVERSION CYCLE | | | | |
| f _{SMPL_CLK} | Sampling frequency | 3.9 | 8.1 | MHz |
| t _{SMPL_CLK} | Sampling time interval | 1 / f _{SMPL_CLK} | | ns |
| t _{PL_SMPL_CLK} | SMPL_CLK low time | 0.45 t _{SMPL_CLK} | 0.55 t _{SMPL_CLK} | ns |
| t _{PH_SMPL_CLK} | SMPL_CLK high time | 0.45 t _{SMPL_CLK} | 0.55 t _{SMPL_CLK} | ns |
| SPI INTERFACE TIMINGS (CONFIGURATION INTERFACE) | | | | |
| f _{SCLK} | Maximum SCLK frequency | | 20 | MHz |
| t _{PH_CK} | SCLK high time | 0.48 | 0.52 | t _{CLK} |
| t _{PL_CK} | SCLK low time | 0.48 | 0.52 | t _{CLK} |
| t _{hi_CS} | Pulse duration: CS high | 220 | | ns |
| t _{d_CSCK} | Delay time: CS falling to the first SCLK capture edge | 20 | | ns |
| t _{su_CKDI} | Setup time: SDI data valid to the SCLK rising edge | 10 | | ns |
| t _{ht_CKDI} | Hold time: SCLK rising edge to data valid on SDI | 5 | | ns |
| t _{D_CKCS} | Delay time: last SCLK falling to CS rising | 5 | | ns |

5.7 Switching Characteristics

at AVDD_5V = 4.75V to 5.25V, VDD_1V8 = 1.75V to 1.85V, IOVDD = 1.15V to 1.85V, V_{REF} = 4.096V (external), and maximum throughput (unless otherwise noted); minimum and maximum values at T_A = -40°C to +125°C; typical values at T_A = 25°C

| PARAMETER | | TEST CONDITIONS | MIN | MAX | UNIT |
|--|--|-----------------|-----------------------------|-----------------------------|------|
| RESET | | | | | |
| t _{PJ} | Power-up time for device | | | 25 | ms |
| SPI INTERFACE TIMINGS (CONFIGURATION INTERFACE) | | | | | |
| t _{den_CKDO} | Delay time: 8 th SCLK rising edge to data enable | | | 22 | ns |
| t _{dz_CKDO} | Delay time: 24 th SCLK rising edge to SDO going Hi-Z | | | 50 | ns |
| t _{d_CKDO} | Delay time: SCLK falling edge to corresponding data valid on SDO | | | 16 | ns |
| t _{ht_CKDO} | Delay time: SCLK falling edge to previous data valid on SDO | | 2 | | ns |
| CMOS DATA INTERFACE | | | | | |
| t _{DCLK} | Data clock output | DDR mode | 10 | | ns |
| | | SDR mode | 20 | | |
| | Clock duty cycle | | 45 | 55 | % |
| t _{off_DCLKDO_r} | Time offset: DCLK rising to corresponding data valid | DDR mode | t _{DCLK} / 4 - 1.5 | t _{DCLK} / 4 + 1.5 | ns |
| t _{off_DCLKDO_f} | Time offset: DCLK falling to corresponding data valid | DDR mode | t _{DCLK} / 4 - 1.5 | t _{DCLK} / 4 + 1.5 | ns |
| t _{d_DCLKDO} | Time delay: DCLK rising to corresponding data valid | SDR mode | -1 | 1 | ns |

5.8 Timing Diagrams

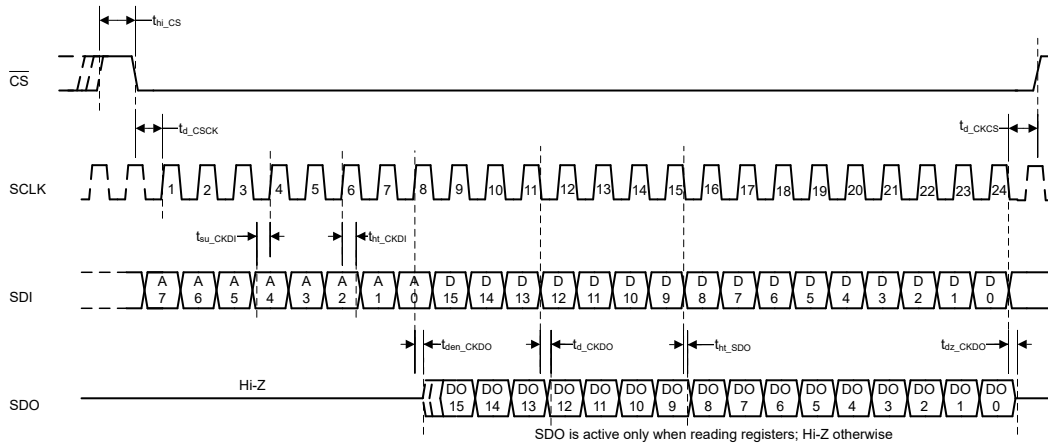


图 5-1. SPI Configuration Interface

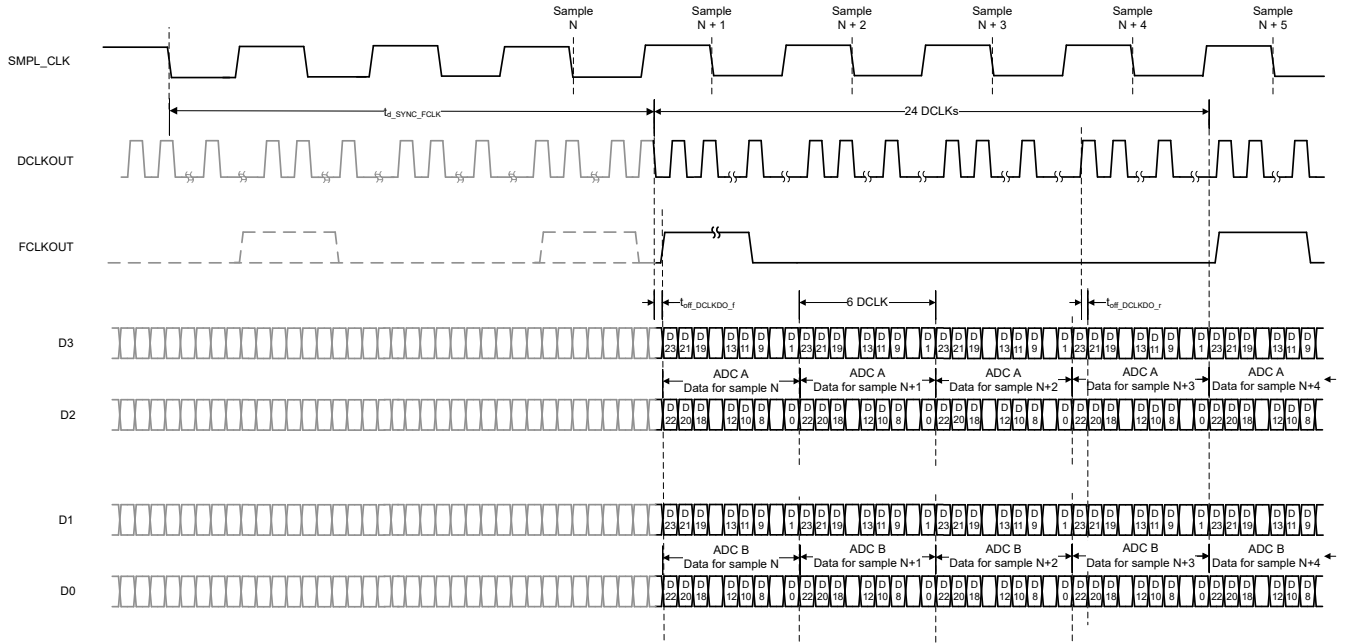


図 5-2. 4-SDO DDR CMOS Data Interface

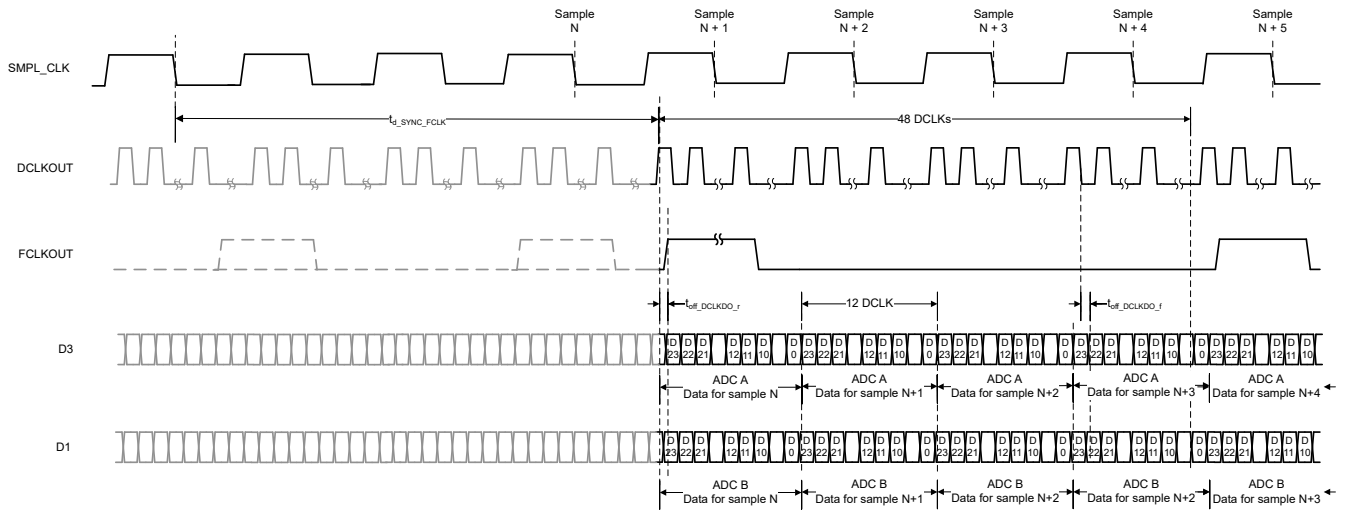


図 5-3. 2-SDO DDR CMOS Data Interface

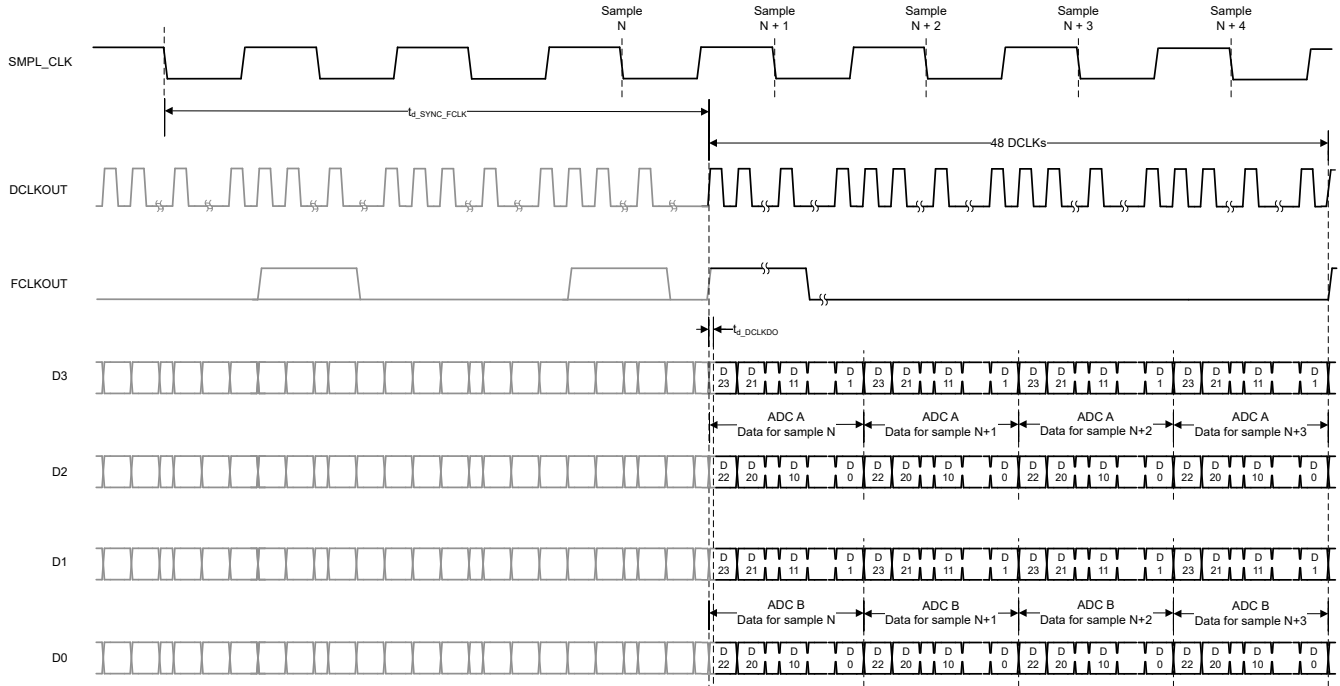


図 5-4. 4-SDO SDR CMOS Data Interface

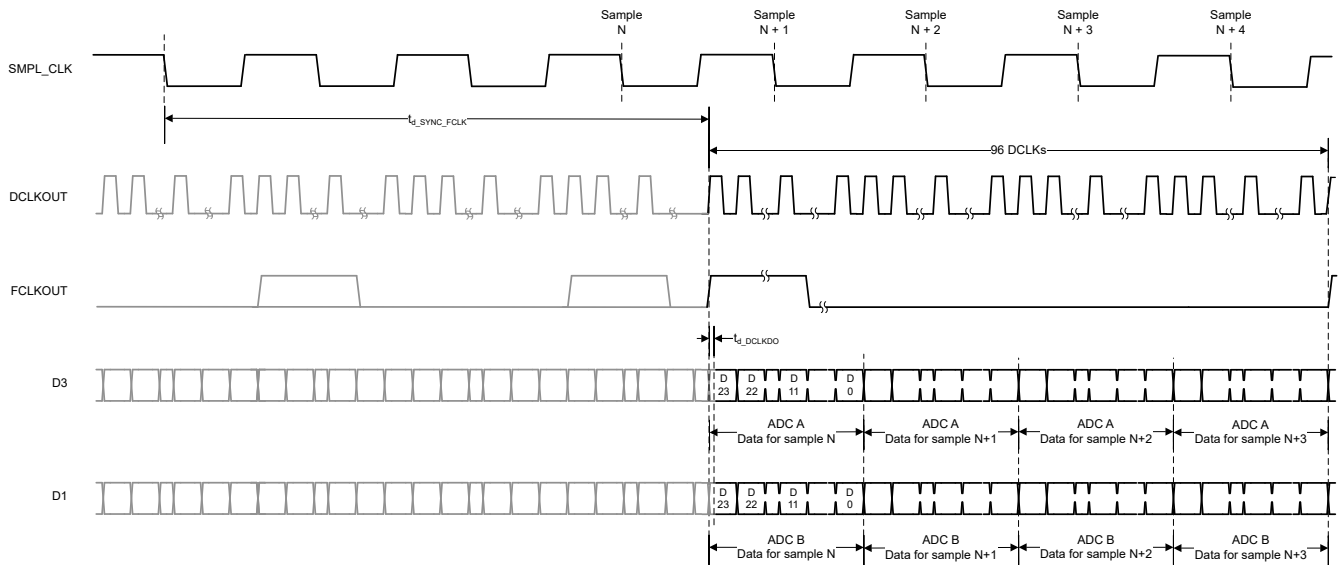


図 5-5. 2-SDO SDR CMOS Data Interface

5.9 Typical Characteristics

at $T_A = 25^\circ\text{C}$, $AVDD_{5V} = 5\text{V}$, $VDD_{1V8} = 1.8\text{V}$, internal $V_{REF} = 4.096\text{V}$, $\pm 5\text{V}$ analog input range, and maximum throughput (unless otherwise noted)

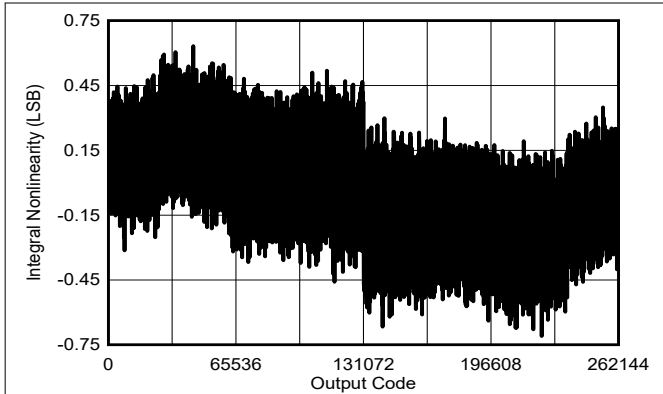


図 5-6. Typical INL With Low-Bandwidth LPF

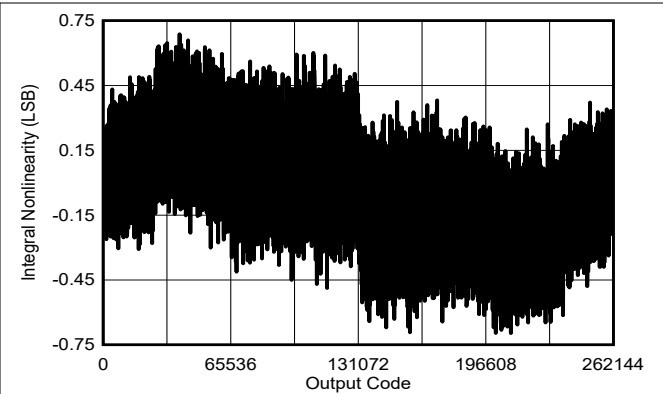


図 5-7. Typical INL With Wide-Bandwidth LPF

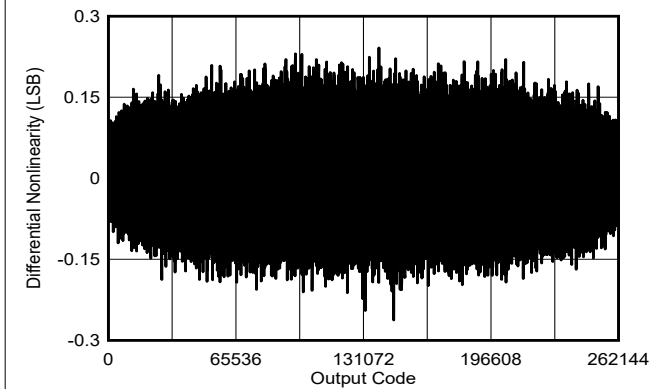


図 5-8. Typical DNL With Low-Noise LPF

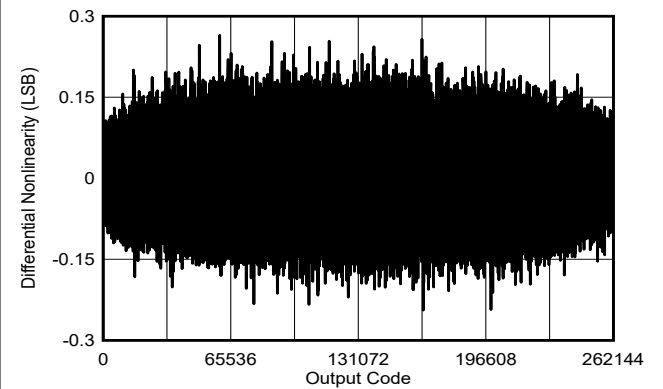
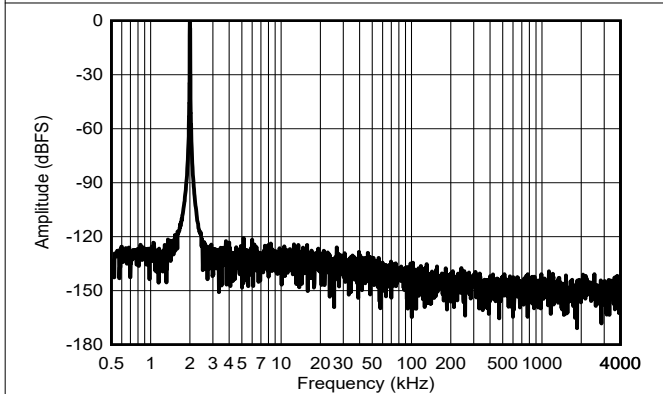
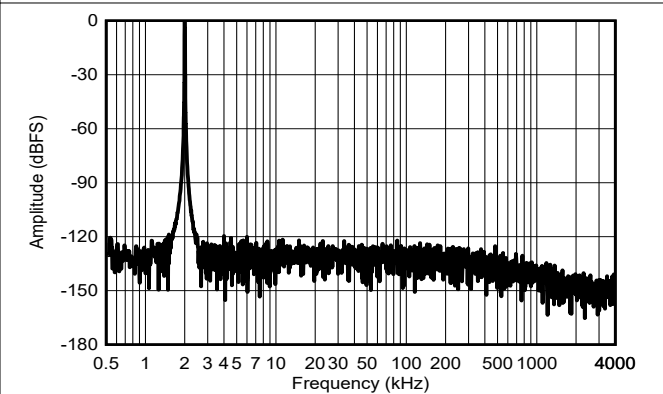


図 5-9. Typical DNL With Wide-Bandwidth LPF



SNR = 91.02dBFS, THD = -117dB at $f_{IN} = 2\text{kHz}$

図 5-10. Typical FFT With Low-Bandwidth LPF,
 RANGE = $\pm 5\text{V}$

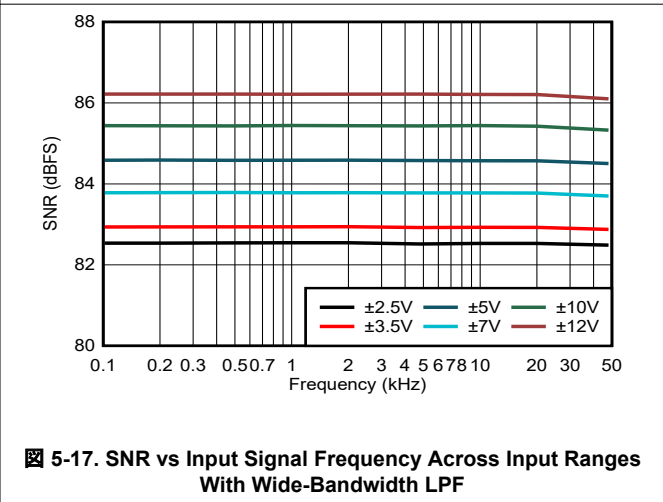
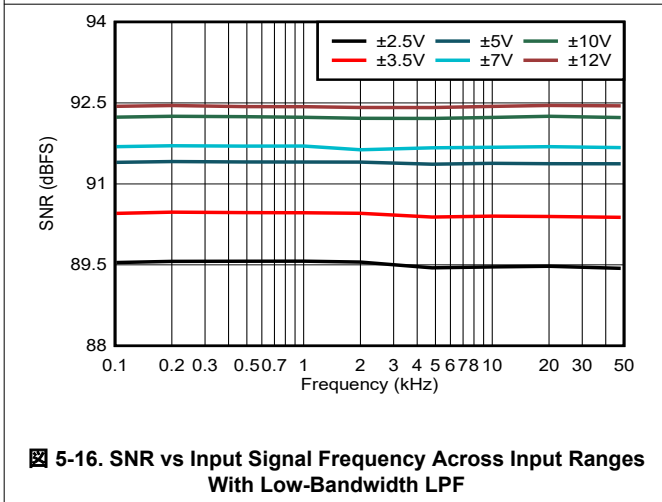
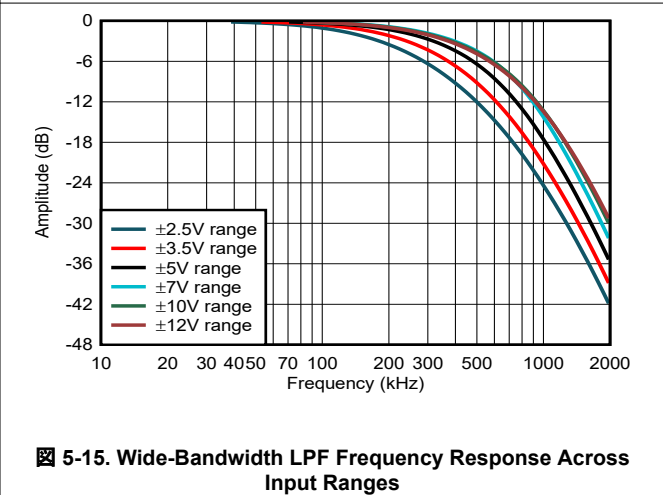
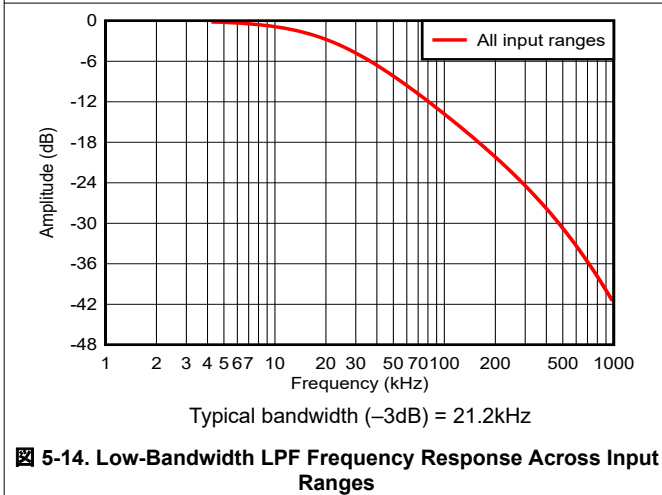
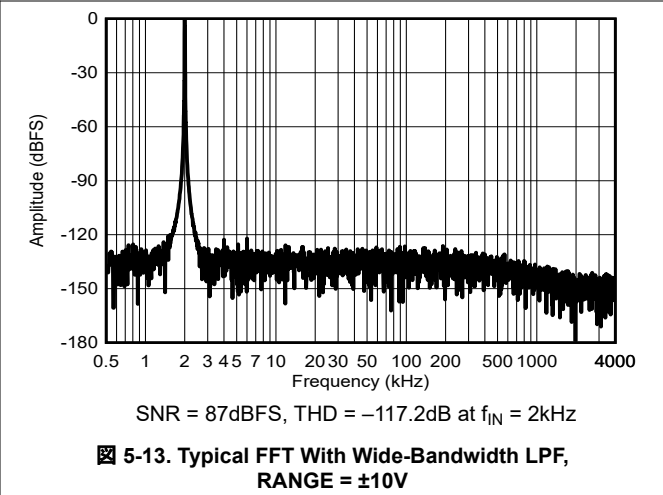
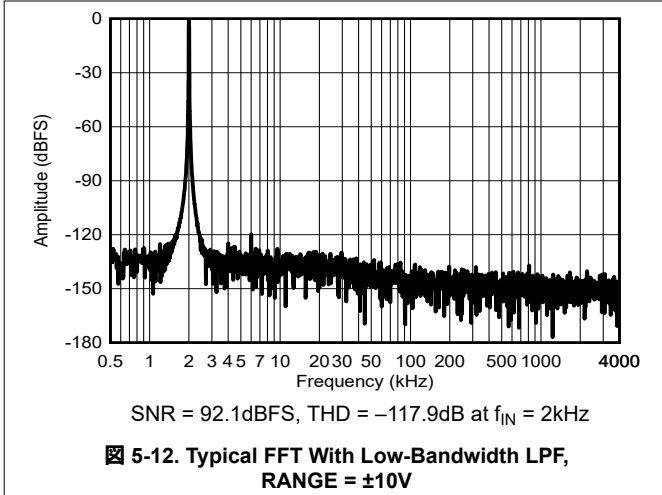


SNR = 84.4dBFS, THD = -116.8dB at $f_{IN} = 2\text{kHz}$

図 5-11. Typical FFT With Wide-Bandwidth LPF,
 RANGE = $\pm 5\text{V}$

5.9 Typical Characteristics (continued)

at $T_A = 25^\circ\text{C}$, $AVDD_{5V} = 5V$, $VDD_{1V8} = 1.8V$, internal $V_{REF} = 4.096V$, $\pm 5V$ analog input range, and maximum throughput (unless otherwise noted)



5.9 Typical Characteristics (continued)

at $T_A = 25^\circ\text{C}$, $AVDD_{5V} = 5V$, $VDD_{1V8} = 1.8V$, internal $V_{REF} = 4.096V$, $\pm 5V$ analog input range, and maximum throughput (unless otherwise noted)

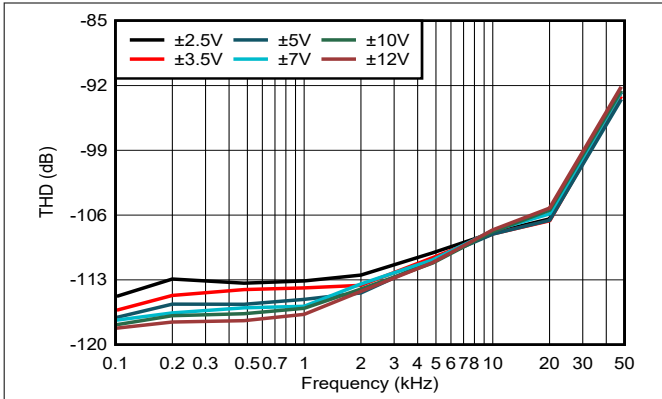


Figure 5-18. THD vs Input Signal Frequency Across Input Ranges With Low-Bandwidth LPF

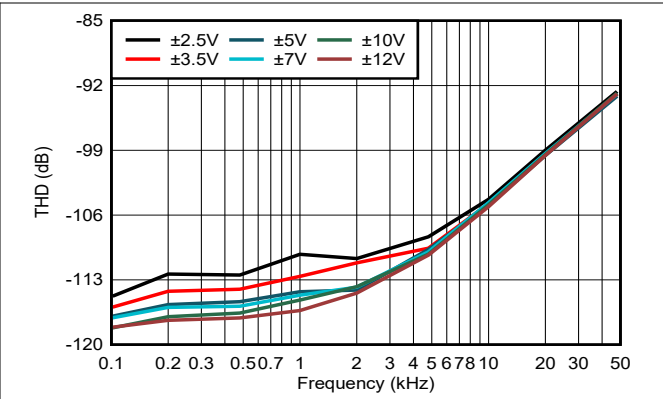


Figure 5-19. THD vs Input Signal Frequency Across Input Ranges With Wide-Bandwidth LPF

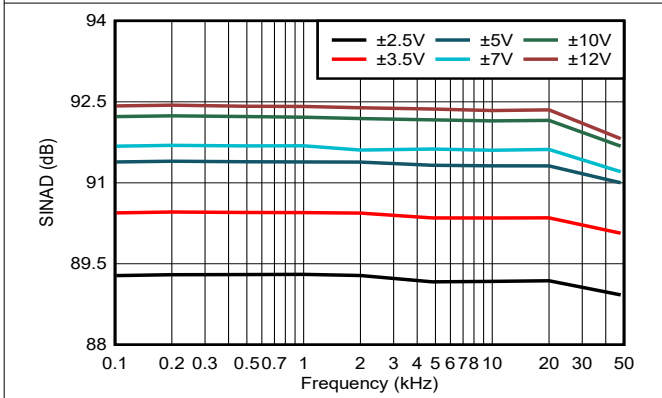


Figure 5-20. SINAD vs Input Signal Frequency Across Input Ranges With Low-Bandwidth LPF

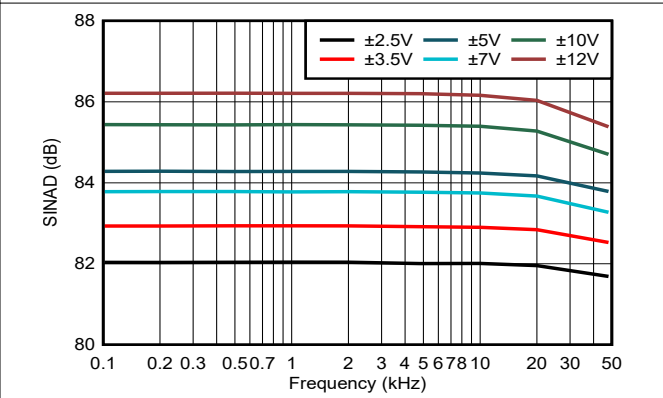


Figure 5-21. SINAD vs Input Signal Frequency Across Input Ranges With Wide-Bandwidth LPF

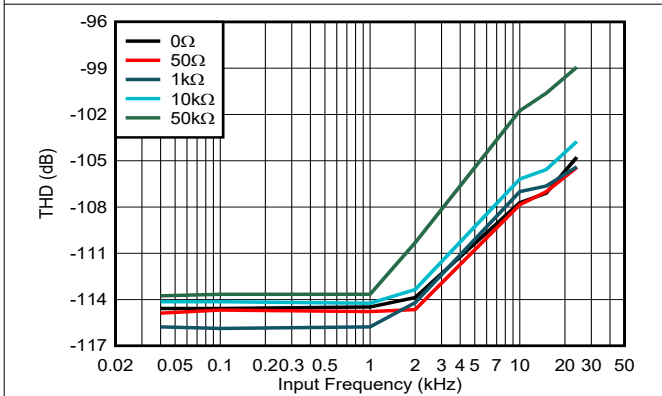


Figure 5-22. THD vs Input Frequency, Low-BW Mode, RANGE = $\pm 5V$, ADS9212

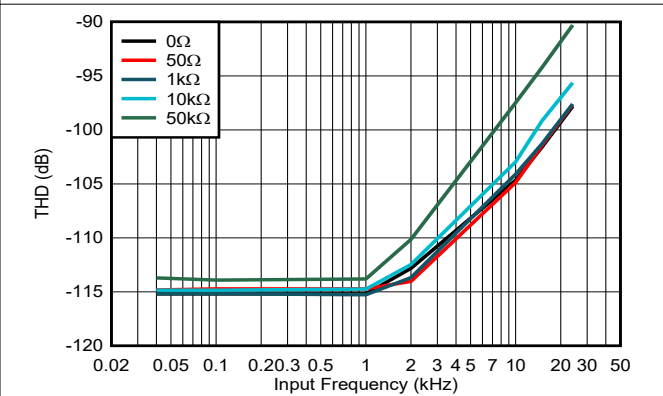
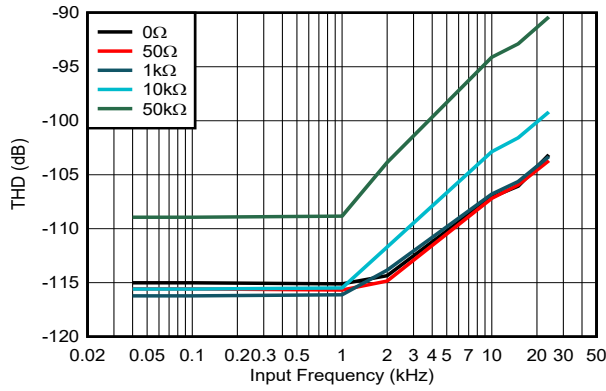


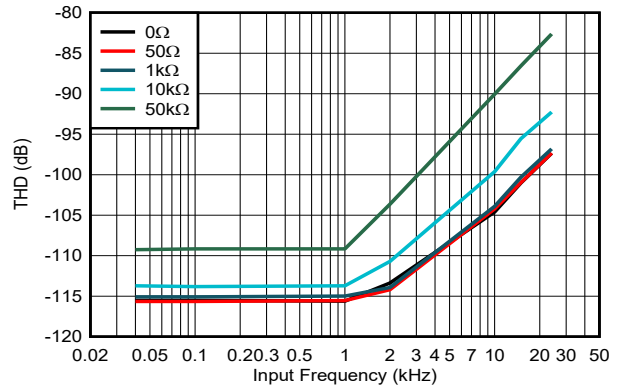
Figure 5-23. THD vs Input Frequency, High-BW Mode, RANGE = $\pm 5V$, ADS9212

5.9 Typical Characteristics (continued)

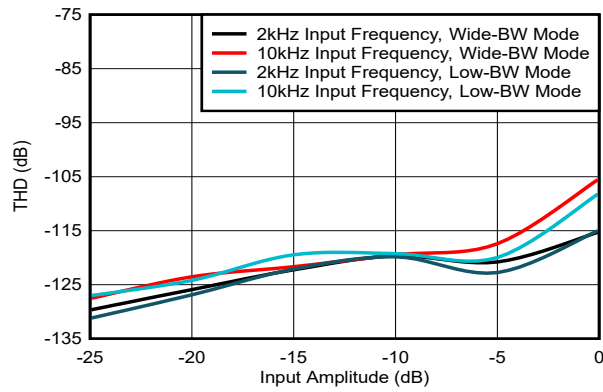
at $T_A = 25^\circ\text{C}$, $AVDD_{5V} = 5V$, $VDD_{1V8} = 1.8V$, internal $V_{REF} = 4.096V$, $\pm 5V$ analog input range, and maximum throughput (unless otherwise noted)



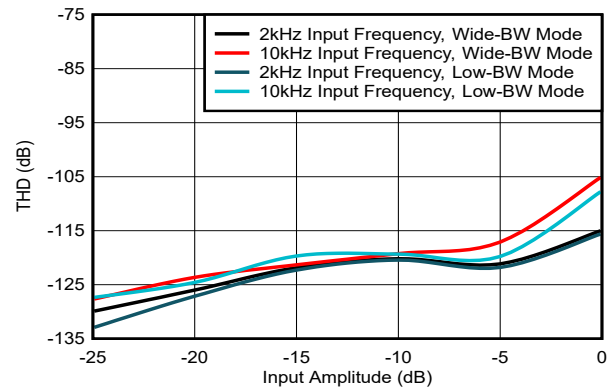
5-24. THD vs Input Frequency, Low-BW Mode, RANGE = $\pm 10V$, ADS9212



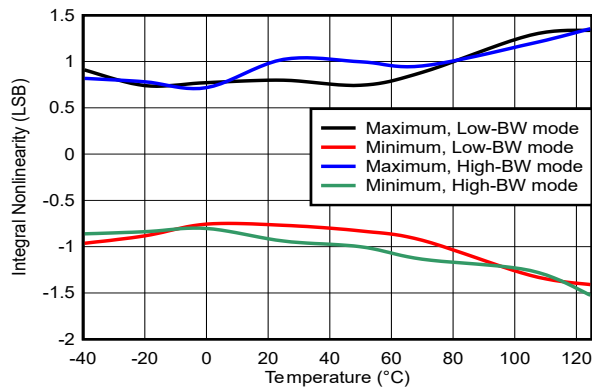
5-25. THD vs Input Frequency, High-BW Mode, RANGE = $\pm 10V$, ADS9212



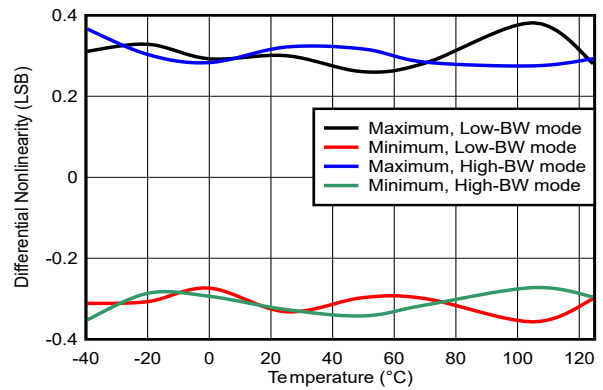
5-26. THD vs Input Amplitude, RANGE = $\pm 5V$



5-27. THD vs Input Amplitude, RANGE = $\pm 10V$



5-28. INL vs Temperature



5-29. DNL vs Temperature

5.9 Typical Characteristics (continued)

at $T_A = 25^\circ\text{C}$, $AVDD_5V = 5V$, $VDD_1V8 = 1.8V$, internal $V_{REF} = 4.096V$, $\pm 5V$ analog input range, and maximum throughput (unless otherwise noted)

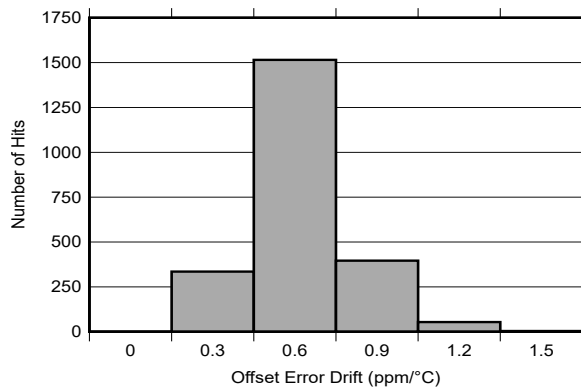


图 5-30. Offset Error Drift Histogram

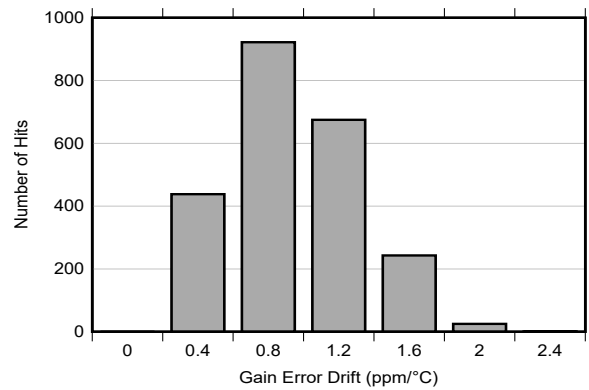


图 5-31. Gain Error Drift Histogram

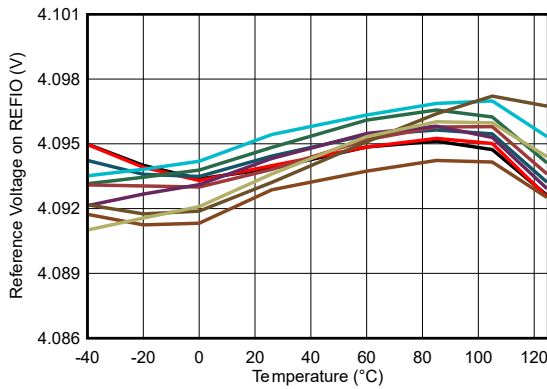


图 5-32. REFIO vs Temperature

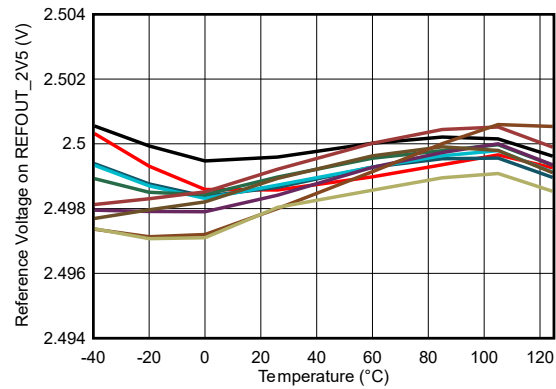


图 5-33. REFOUT_2V5 vs Temperature

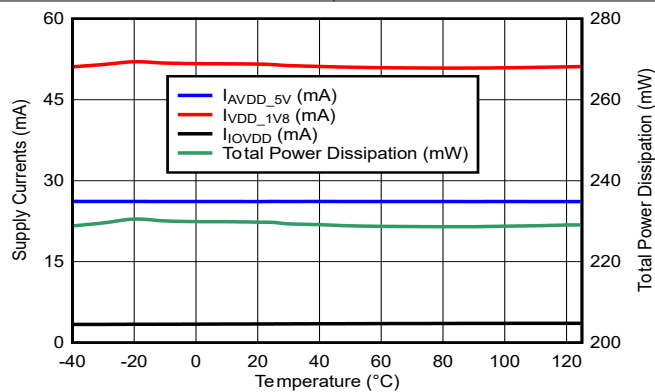


图 5-34. Supply Currents and Total Power Dissipation vs Temperature

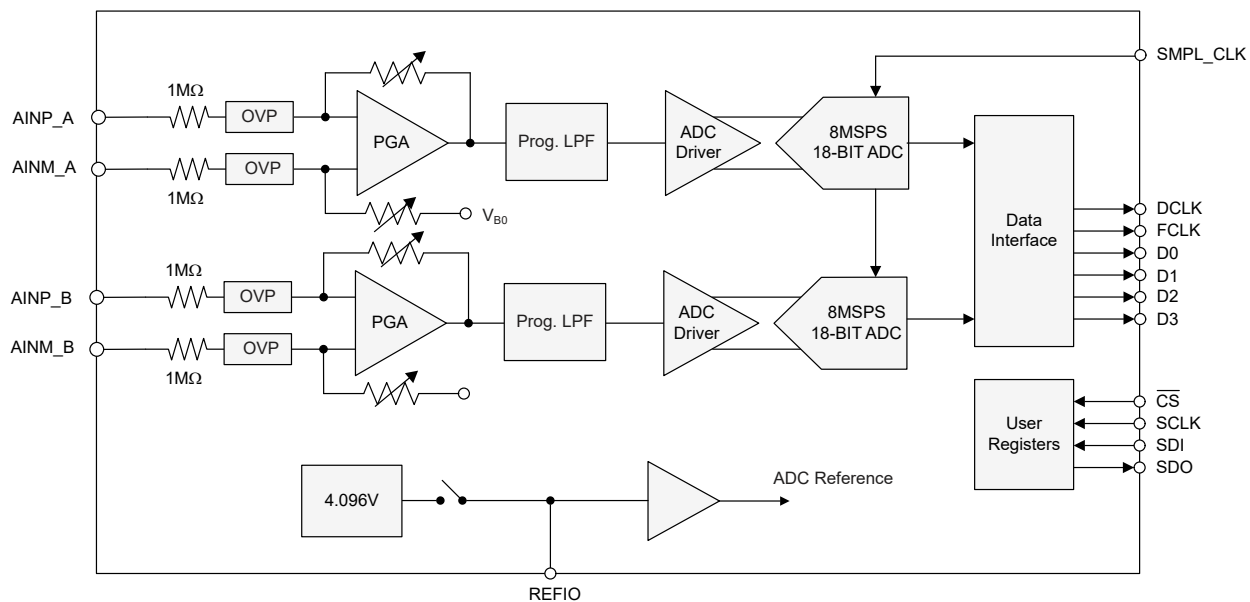
6 Detailed Description

6.1 Overview

The ADS9212 is a 18-bit data acquisition (DAQ) system with two-channel analog inputs that can be configured as either single-ended or differential. Each analog input channel consists of an input clamp protection circuit, and a programmable gain amplifier (PGA) with user-selectable bandwidth options. The input signals are digitized using a 18-bit analog-to-digital converter (ADC), based on the successive approximation register (SAR) architecture. This overall system can achieve a maximum throughput of 8 MSPS/channel for all channels. The device features a 4.096V internal reference with a fast-settling buffer.

The device operates from 5V and 1.8V analog supplies and can accommodate true bipolar input signals. The input clamp protection circuitry can tolerate voltages up to $\pm 18V$. The device offers a constant $1M\Omega$ resistive input impedance irrespective of the sampling frequency or the selected input range. The ADS9212 offers a simplified end design without requiring external high-voltage bipolar supplies and complicated driver circuits.

6.2 Functional Block Diagram



6.3 Feature Description

6.3.1 Analog Inputs

The ADS9212 incorporates dual, simultaneous-sampling, 18-bit successive approximation register (SAR) analog-to-digital converters (ADCs). The device has a total of two analog input pairs. The ADC digitizes the voltage difference between the analog input pairs AINP_x – AINM_x. The following image shows the simplified circuit schematic for each analog input channel, including the input clamp protection circuit, PGA, low-pass filter, high-speed ADC driver, and a precision 18-bit SAR ADC.

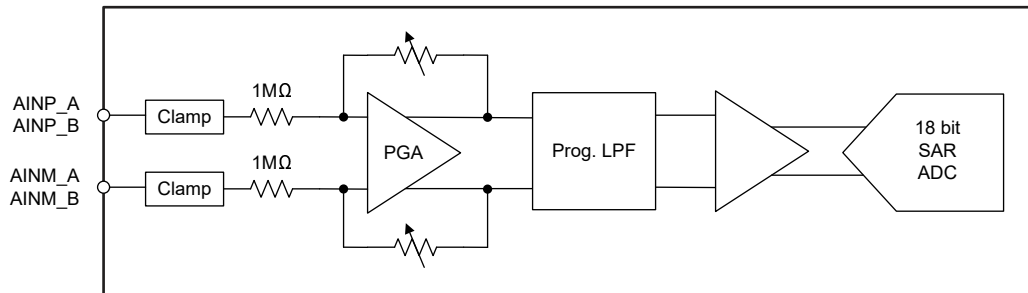


图 6-1. Front-End Circuit Schematic for the Selected Analog Input Channel

6.3.1.1 Input Clamp Protection Circuit

The ADS9212 features an internal clamp protection circuit on each of the two analog input channels; see [图 6-1](#). The input clamp protection circuit allows each analog input to swing up to a maximum voltage of $\pm 18V$. Beyond an input voltage of $\pm 18V$, the input clamp circuit turns on and still operates from the single 5V supply. [图 6-2](#) shows a typical current versus voltage characteristic curve for the input clamp.

For input voltages above the clamp threshold, make sure that the input current never exceeds $\pm 10mA$. A resistor placed in series with the analog inputs is an effective way to limit the input current. In addition to limiting the input current, the series resistor can also provide an antialiasing, low-pass filter (LPF) when coupled with a capacitor. Matching the external source impedance on the AINxP and AINxM pins cancels any additional offset error.

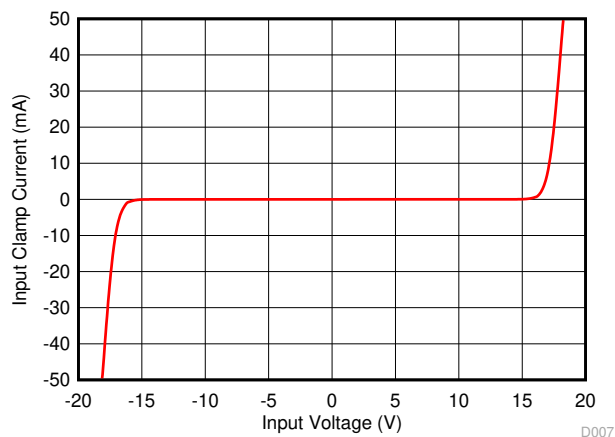


图 6-2. Input Protection Clamp Profile, Input Clamp Current vs Source Voltage

6.3.1.2 Programmable Gain Amplifier (PGA)

The ADS9212 features a PGA at every analog input channel. The PGA supports single-ended and differential inputs with a bipolar signal swing. [表 6-1](#) lists the supported analog input ranges. The analog input range can be configured independently for each channel by using the RANGE_ADC_x register fields in address 0xC2 and address 0xC3.

表 6-1. Analog Input Ranges

| DIFFERENTIAL INPUTS | SINGLE-ENDED INPUTS | RANGE_ADC_x CONFIGURATION |
|---------------------|---------------------|---------------------------|
| ±12V | ±12V | 5 |
| ±10V | ±10V | 4 |
| ±7V | ±7V | 3 |
| ±5V | ±5V | 0 |
| ±3.5V | ±3.5V | 1 |
| ±2.5V | ±2.5V | 2 |

Each analog input channel features an antialiasing, low-pass filter (LPF) at the output of the PGA. 表 6-2 lists the various programmable LPF options available in the ADS9212 corresponding to the analog input range. 図 5-14 and 図 5-15 illustrate the frequency responses for low-bandwidth and wide-bandwidth LPF configurations. The analog input bandwidth for the two analog input channels can be selected using the BW_ADC_A and BW_ADC_B bits in address 0xC0 of register bank 1.

表 6-2. Low-Pass Filter Corner Frequency

| LPF | ANALOG INPUT RANGE | CORNER FREQUENCY (–3dB) |
|----------------|--------------------|-------------------------|
| Low-bandwidth | All input ranges | 21kHz |
| Wide-bandwidth | ±12V | 375kHz |
| | ±10V | 385kHz |
| | ±7V | 400kHz |
| | ±5V | 320kHz |
| | ±3.5V | 240kHz |
| | ±2.5V | 182kHz |

6.3.1.3 Wide-Common-Mode Voltage Rejection Circuit

The ADS9212 features a common-mode (CM) rejection circuit at the analog inputs that supports CM voltages up to ±12V. The CM voltage for differential inputs is given by 式 1. On power-up or after reset, the common-mode voltage range for the analog input channels is ±12V (CM_CTRL_EN = 0b). Voltage at the analog inputs, in all cases, must be within the *Absolute Maximum Ratings*.

$$\text{Common mode voltage} = \frac{(\text{Voltage on AINP}) + (\text{Voltage on AINM})}{2} \quad (1)$$

As described in the following table, the CM voltage rejection circuit can be optimized for various CM voltages for differential inputs.

表 6-3. Wide Common-Mode Configuration for Differential Inputs

| COMMON-MODE (CM) RANGE | CM_CTRL_EN | ADC A | | ADC B | |
|------------------------|------------|-------------|--------------------|-------------|--------------------|
| | | CM_EN_ADC_A | CM_RNG_ADC_A [1:0] | CM_EN_ADC_B | CM_RNG_ADC_B [1:0] |
| CM ≤ ±1V | 1 | 0 | Do not care | 0 | Do not care |
| CM ≤ ±RANGE / 2 | | 1 | 0 | 1 | 0 |
| CM ≤ ±6V | | | 1 | 1 | 1 |
| CM ≤ ±12V | | | 2 | 2 | 2 |

The CM voltage rejection circuit must be configured depending on the analog input range of the PGA when using single-ended inputs as well. The following table lists the recommended configuration for single-ended inputs for various analog input voltage ranges.

表 6-4. Wide Common-Mode Configuration for Single-Ended Inputs

| PGA ANALOG INPUT RANGE | CM_CTRL_EN | ADC A | | ADC B | |
|------------------------|------------|-------------|--------------------|-------------|--------------------|
| | | CM_EN_ADC_A | CM_RNG_ADC_A [1:0] | CM_EN_ADC_B | CM_RNG_ADC_B [1:0] |
| ±2.5V, ±3.5V, and ±5V | 1 | 0 | Do not care | 0 | Do not care |
| ±7V, ±10V, and ±12V | | 1 | 0 | 1 | 0 |

6.3.1.4 Gain Error Calibration

The ADS9212 features calibration logic to minimize gain error from the analog inputs. Enable gain error calibration for minimum gain error. Gain error calibration can be enabled by configuring the GE_CAL_EN1 (address = 0xD), GE_CAL_EN2, GE_CAL_EN3 (address = 0x33), and GE_CAL_EN4 (address = 0x34).

If gain error calibration is not enabled as shown in 表 6-5, the full-scale analog input ranges are increased by a factor of 1.024.

表 6-5. Analog Input Ranges vs Gain-Error Calibration

| RANGE_ADC_x CONFIGURATION | ANALOG INPUT RANGE WITH CALIBRATION | ANALOG INPUT RANGE WITHOUT CALIBRATION |
|---------------------------|-------------------------------------|--|
| 5 | ±12V | ±12.288V |
| 4 | ±10V | ±10.24V |
| 3 | ±7V | ±7.168V |
| 0 | ±5V | ±5.12V |
| 1 | ±3.5V | ±3.584V |
| 2 | ±2.5V | ±2.56V |

6.3.2 ADC Transfer Function

The ADS9212 outputs 18 bits of conversion data in either straight-binary or binary two-complement formats. The format for the output codes is the same across all analog channels. The format for the output codes can be selected using the DATA_FORMAT field in address 0xD in register bank 1. 図 6-3 and 表 6-6 show the transfer characteristics for the ADS9212. The LSB size depends on the analog input range selected, gain-error calibration, and system gain error calibration as shown in 式 2.

$$LSB = \frac{\text{Analog input range}}{2^{18}} \times (1 + G \times 0.024) \quad (2)$$

where:

- G is 0 when gain-error calibration is enabled, otherwise G is 1; see the [Gain Error Calibration](#) section

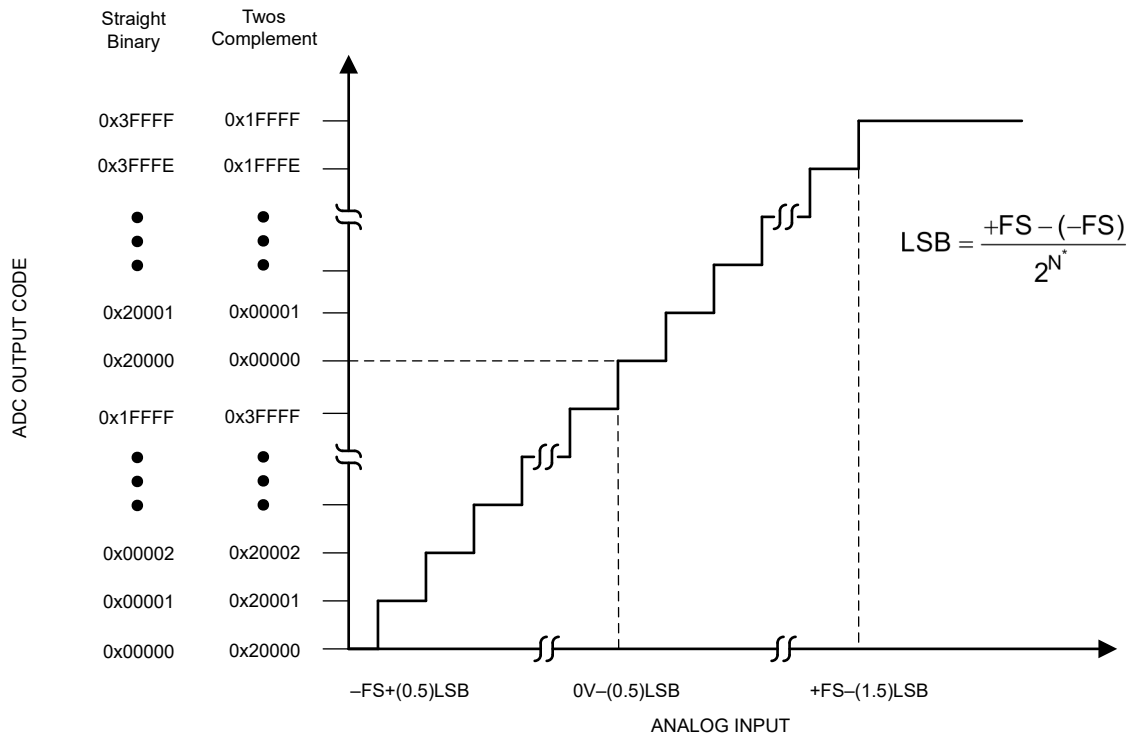


図 6-3. Transfer Characteristics

表 6-6. ADC Full-Scale Range and LSB Size

| RANGE | +FS | MIDSCALE | -FS | LSB |
|-------|------|----------|-------|---------|
| ±2.5V | 2.5V | 0V | -2.5V | 19.07µV |
| ±3.5V | 3.5V | 0V | -3.5V | 26.70µV |
| ±5V | 5V | 0V | -5V | 38.15µV |
| ±7V | 7V | 0V | -7V | 53.41µV |
| ±10V | 10V | 0V | -10V | 76.29µV |
| ±12V | 12V | 0V | -12V | 91.55µV |

6.3.3 ADC Sampling Clock Input

Use a low-jitter external clock with a high slew rate to maximize SNR performance. The ADS9212 can be operated with a differential or a single-ended clock input. Clock amplitude impacts the ADC aperture jitter and consequently the SNR. For maximum SNR performance, provide a clock signal with fast slew rates that maximizes swing between IOVDD and GND levels.

The sampling clock must be a free-running continuous clock. The ADC generates a valid output data, data clock, and frame clock after a free-running sampling clock is applied. The ADC is powered down and output data, data clock, and frame clock are invalid when the sampling clock is stopped.

Figure 6-4 shows a diagram of the differential sampling clock input. For this configuration, connect the differential sampling clock input to the SMPL_CLKP and SMPL_CLKM pins. Figure 6-5 shows a diagram of the single-ended sampling clock input. In this configuration, connect the single-ended sampling clock to SMPL_CLKP and connect SMPL_CLKM to ground.

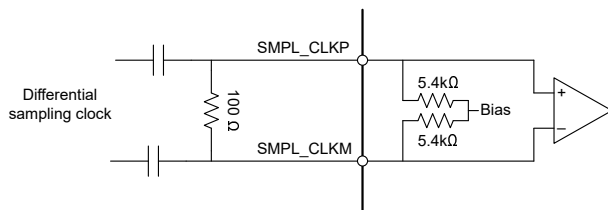


Figure 6-4. AC-Coupled Differential Sampling Clock

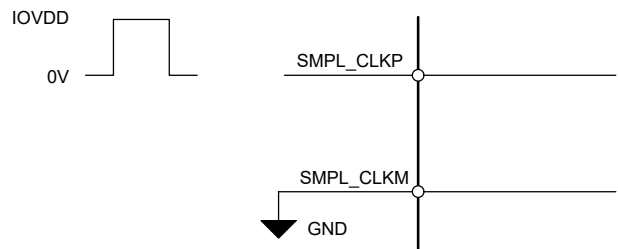


Figure 6-5. Single-Ended Sampling Clock

6.3.4 Reference

The ADS9212 has a precision, low-drift voltage reference internal to the device. For best performance, filter the internal reference noise by connecting a 10μF ceramic bypass capacitor to the REFIO pin. An external reference can also be connected at the REFIO pin and the internal reference voltage can be disabled by writing to PD_REF = 1b in address 0xC1 of register bank 1.

6.3.4.1 Internal Reference Voltage

The ADS9212 features an internal reference voltage with a nominal output voltage of 4.096V. On power-up, the internal reference is enabled by default. As shown in Figure 6-6, place a minimum 10μF decoupling capacitor between the REFIO and REFIO pins.

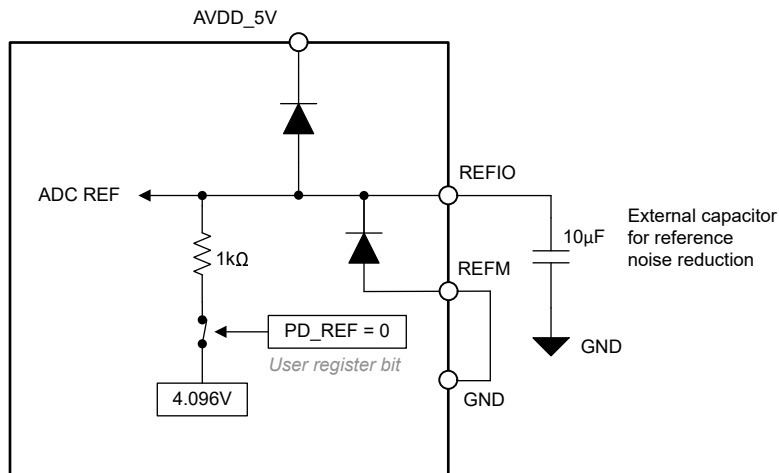


Figure 6-6. Internal Reference Voltage

6.3.4.2 External Reference Voltage

An external 4.096V reference voltage, as shown in [Figure 6-7](#), can be connected at the REFIO pin with an appropriate decoupling capacitor placed between the REFIO and REFM pins. For improved thermal drift performance, TI recommends the REF7040. To disable the internal reference, set PD_REF = 1b in address 0xC1 in register bank 1. The REFIO pin has ESD protection diodes connected to the AVDD_5V and REFM pins.

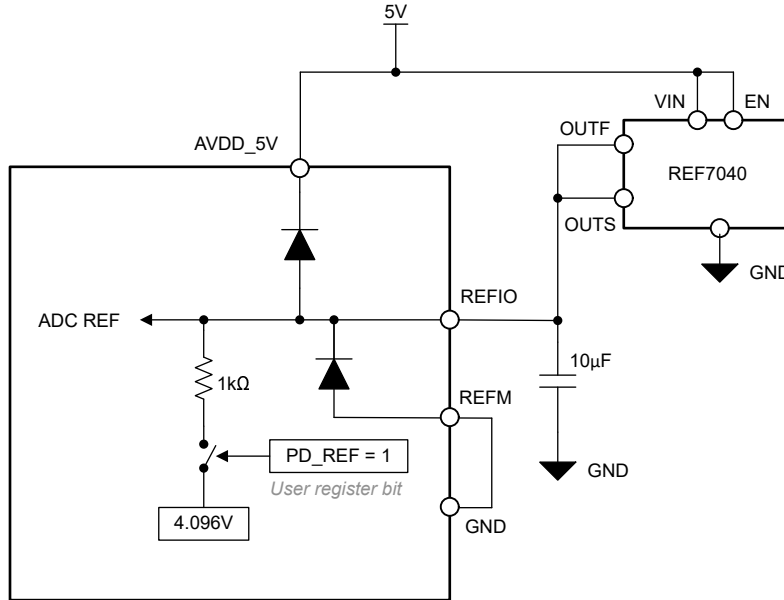


Figure 6-7. External Reference Voltage

6.3.5 Data Interface

The ADS9212 supports 2-lane and 4-lane mode with single-data-rate (SDR) and double-data-rate (DDR) interface modes. The data interface can be selected using the configuration SPI as described in [Table 6-7](#). The ADC generates the data (D[3:0]), data clock (DCLKOUT), and frame clock (FCLKOUT) in response to the sampling clock signal on the SMPL_CLK input pin. The 18-bit ADC conversion result is output MSB first in a 24-bit data packet and the last six bits are zeroes.

The data interface signals can be described as:

- D[3:0]: Data output from the ADC. In 4-lane mode all four lanes are used, whereas in 2-lane mode D3 and D1 are used to output ADC data.
- DCLKOUT: Data clock output from the ADC.
- FCLKOUT: Frame clock output from the ADC delimiting each set of 2-channel data.

Use the registers in [Table 6-7](#) to configure the data interface.

Table 6-7. Register Configurations For Interface Modes

| INTERFACE MODE | FIGURE | DATA_RATE (Address = 0xC1) | DATA_LANES (Address = 0xC1) |
|----------------|----------------------------|-------------------------------|--------------------------------|
| 4-lane, DDR | Figure 5-2 | 0 | 0 |
| 2-lane, DDR | Figure 5-3 | 0 | 1 |
| 4-lane, SDR | Figure 5-4 | 1 | 0 |
| 2-lane, SDR | Figure 5-5 | 1 | 1 |

6.3.5.1 Data Clock Output

The ADS9212 features a source-synchronous data interface where the ADC provides the output data and the clock to capture the data. The clock to capture the data is output on the DCLKOUT pin. The clock frequency depends on the sampling clock speed, data rate (SDR or DDR), and number of output lanes (four lanes or two lanes) and is given by 式 3. The frame clock frequency is given by 式 4.

$$\text{Data clock frequency} = \frac{24 \text{ bits/channel} \times 2 \text{ channels}}{\text{Number of data lanes} \times \text{Data rate (SDR} = 1, \text{DDR} = 2)} \times \text{Frame clock frequency} \quad (3)$$

$$\text{Frame clock frequency} = \frac{\text{Sampling clock frequency}}{4} \quad (4)$$

表 6-8 shows the data clock frequency for the maximum sampling rates for the ADS9212 for various interface modes.

表 6-8. Data Clock Frequency for Interface Modes

| INTERFACE MODE | (f _{SMPL_CLK} = 4MHz) | (f _{SMPL_CLK} = 8MHz) |
|----------------|--------------------------------|--------------------------------|
| 4-lane, DDR | 24MHz | 48MHz |
| 2-lane, DDR | 48MHz | 96MHz |
| 4-lane, SDR | 48MHz | 96MHz |
| 2-lane, SDR | 96MHz | Not supported |

6.3.5.2 ADC Output Data Randomizer

As shown in 図 6-8, the ADS9212 features a data output randomizer. When enabled, the ADC conversion result is bit-wise exclusive-ORed (XOR) with the LSB of the conversion result. The LSB of the ADC conversion result has equal probability of being either 1 or 0. As a result of the XOR operation, the data output from the ADS9212 is randomized. The ground bounce created by the transmission of this randomized result over the data interface is uncorrelated with the analog input voltage. This uncorrelated transmission helps minimize interference between data transmission and analog performance of the ADC when the PCB layout does not minimize ground bounce.

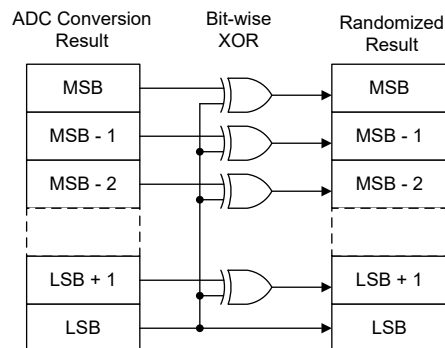


図 6-8. Bit-Wise XOR Operation

6.3.5.3 Test Patterns for Data Interface

As shown in 図 6-9, the ADS9212 features test patterns used by the host for debugging and verifying the data interface. The test patterns replace the ADC output data with predefined digital data. Enable the test patterns by configuring the corresponding register addresses 0x13 through 0x1B in bank 1.

表 6-9 lists the test patterns supported by the ADS9212.

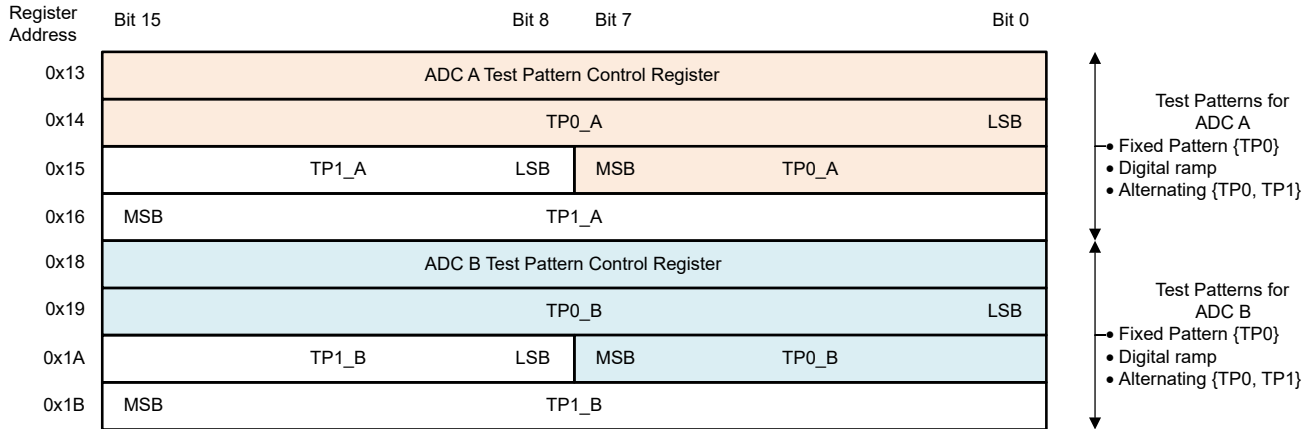


図 6-9. Register Bank for Test Patterns

表 6-9. Test Pattern Configurations

| ADC OUTPUT | TP_EN_ADC_A TP_EN_ADC_B | TP_MODE_ADC_A TP_MODE_ADC_B | SECTION | RESULT ⁽¹⁾ |
|---------------------------|----------------------------|--------------------------------|--------------------------|--|
| ADC conversion result | 0 | | | |
| Fixed pattern | 1 | 0 or 1 | Fixed Pattern | ADC A = TP0_A ADC B = TP0_B |
| Digital ramp | 1 | 2 | Digital Ramp | ADC A = Digital ramp ADC B = Digital ramp |
| Alternating test patterns | 1 | 3 | Alternating Test Pattern | ADC A = TP0_A, TP1_A ADC B = TP0_B, TP1_B |

(1) Configure the test patterns for two separate channel groups ADC A and ADC B.

6.3.5.3.1 Fixed Pattern

The ADC outputs fixed patterns defined in the TP0_A and TP0_B registers in place of the ADC A and ADC B data, respectively.

- Configure the test patterns in TP0_A and TP0_B
- Set TP_EN_ADC_A = 1, TP_MODE_ADC_A = 0 (address = 0x13), TP_EN_ADC_B = 1, and TP_MODE_ADC_B = 0 (address = 0x18)

6.3.5.3.2 Digital Ramp

The ADC outputs digital ramp values with increments specified in the RAMP_INC_A and RAMP_INC_B registers in place of the ADC A and ADC B data, respectively.

- Configure the increment value between two successive steps of the digital ramp in the RAMP_INC_A (address = 0x13) and RAMP_INC_B (address = 0x18) registers, respectively. The digital ramp increments by N + 1, where N is the value configured in these registers.
- Set TP_EN_ADC_A = 1, TP_MODE_ADC_A = 2 (address = 0x13), TP_EN_ADC_B = 1, and TP_MODE_ADC_B = 2 (address = 0x18)

6.3.5.3.3 Alternating Test Pattern

The ADC outputs alternating test patterns defined in the TP0_A, TP1_A and TP0_B, TP1_B registers in place of the ADC A and ADC B data, respectively.

- Configure the test patterns in TP0_A, TP1_A, TP0_B, and TP1_B
- Set TP_EN_ADC_A = 1, TP_MODE_ADC_A = 3 (address = 0x13), TP_EN_ADC_B = 1, and TP_MODE_ADC_B = 3 (address = 0x18)

6.4 Device Functional Modes

6.4.1 Power-Down

The ADS9212 is powered-down by either a logic 0 on the $\overline{\text{PWDN}}$ pin or by writing 11b to the PD_CH field in address 0xC0 in register bank 1. The device registers settings are retained.

6.4.2 Reset

The ADS9212 is powered down and reset by either a logic 0 on the $\overline{\text{RESET}}$ pin or by writing 1b to the RESET field in address 0x00 in register bank 0. The device registers are initialized to the default values after reset and the device must be initialized with a sequence of register write operations; see the [Initialization Sequence](#) section.

6.4.3 Initialization Sequence

As shown in [表 6-10](#), the ADS9212 must be initialized by a sequence of register writes after device power-up or reset. A free-running sampling clock must be connected to the ADC before executing the initialization sequence. The ADS9212 registers are initialized with the default value after the initialization sequence is complete.

表 6-10. ADS9212 Initialization Sequence

| STEP NUMBER | REGISTER | | | COMMENT |
|-------------|-----------------------|---------|----------------|---|
| | BANK | ADDRESS | VALUE[15:0] | |
| 1 | 0 | 0x03 | 0x0002 | Select register bank 1 |
| 2 | 1 | 0xF6 | 0x0002 | INIT_2 = 1 |
| 3 | 0 | 0x04 | 0x000B | INIT_1 = 1011b |
| 4 | 0 | 0x03 | 0x0010 | Select register bank 2 |
| 5 | 2 | 0x12 | 0x0040 | INIT_3 = 1 |
| 6 | 2 | 0x13 | 0x8000 | INIT_4 = 1 |
| 7 | 2 | 0x0A | 0x4000 | INIT_5 = 1 |
| 8 | Wait 10 μ s (min) | | | |
| 9 | 2 | 0x0A | 0x0000 | INIT_5 = 0 |
| 10 | 0 | 0x03 | 0x0002 | Select register bank 1 |
| 11 | 1 | 0xF6 | 0x0000 | INIT_2 = 0 |
| 12 | 0 | 0x03 | 0x0010 | Select register bank 2 |
| 13 | 2 | 0x13 | 0x0000 | INIT_5 = 0 |
| 14 | 2 | 0x12 | 0x0000 | INIT_4 = 0 |
| 15 | 2 | 0x19 | 0x0E00 | INIT_4A = 111b |
| 16 | 2 | 0x1F | 0x1800 | INIT_5A = 11b |
| 17 | 0 | 0x04 | 0x0000 | INIT_1 = 0 |
| 18 | 0 | 0x03 | 0x0002 | Select register bank 1 |
| 19 | 1 | 0x33 | 0x0030 | Write INIT_KEY |
| 20 | 1 | 0xF4 | 0x0000 | INIT = 0 |
| 21 | 1 | 0xF4 | 0x0002 | INIT = 1 |
| 22 | Wait 1ms (min) | | | |
| 23 | 1 | 0xF4 | 0x0000 | INIT = 0 |
| 24 | Wait 1ms (min) | | | |
| 25 | 1 | 0x33 | 0x0000 | INIT_KEY = 0 |
| 26 | 1 | 0x0D | <user-defined> | Enable gain error calibration and select ADC output data format |
| 27 | 1 | 0x33 | 0x2040 | Enable gain error calibration |
| 28 | 1 | 0x34 | 0x0010 | Enable gain error calibration |

表 6-10. ADS9212 Initialization Sequence (続き)

| STEP NUMBER | REGISTER | | | COMMENT |
|-------------|----------|---------|-------------|--------------------|
| | BANK | ADDRESS | VALUE[15:0] | |
| 29 | 1 | 0x37 | 0x0005 | Device initialized |

As shown in 表 6-11, the default settings of the ADS9212 can be changed for user-defined configuration:

- Analog inputs: analog input range, bandwidth, and common-mode voltage range
- Data interface: number of output lanes, single or double data rate

表 6-11. ADS9212 User-Configuration

| STEP | REGISTER | | | COMMENT |
|------|----------|---------------|----------------|---|
| | BANK | ADDRESS | VALUE[15:0] | |
| 1 | 1 | 0xC1 | <user-defined> | Configure data interface (data rate, number of lanes) and select internal or external reference |
| 2 | 1 | 0xC2 and 0xC3 | <user-defined> | Select analog input ranges. See 表 6-1. |
| 3 | 1 | 0xC0 | <user-defined> | Select analog input bandwidth. See 表 6-2. |
| 4 | 1 | 0xC4 and 0xC5 | <user-defined> | Select common-mode range for analog inputs. See 表 6-3 and 表 6-4. |

6.4.4 Normal Operation

After the ADS9212 is initialized (see 表 6-10), the ADS9212 converts analog input voltages to digital output. A free-running sampling clock is required for normal device operation; see the [ADC Sampling Clock Input](#) section.

6.5 Programming

6.5.1 Register Write

Register write access is enabled by setting SPI_RD_EN = 0b. The 16-bit configuration registers are grouped in three register banks and are addressable with an 8-bit register address. Register bank 1 and register bank 2 are selected for read or write operation by configuring the REG_BANK_SEL bits. Registers in bank 0 are always accessible, irrespective of the REG_BANK_SEL bits. The register addresses in bank 0 are unique and are not used in register banks 1 and 2.

As shown in 図 6-10, steps to write to a register are:

1. Frame 1: Write to register address 0x03 in register bank 0 to select either register bank 1 or bank 2 for a subsequent register write. This frame has no effect when writing to registers in bank 0.
2. Frame 2: Write to a register in the bank selected in frame 1. Repeat this step for writing to multiple registers in the same register bank.

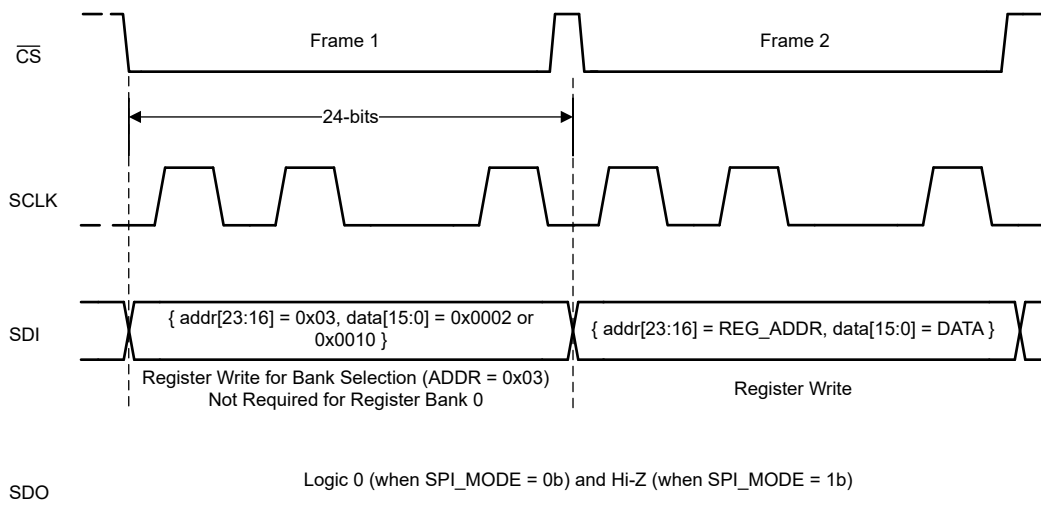


図 6-10. Register Write

6.5.2 Register Read

Select the desired register bank by writing to register address 0x03 in register bank 0. Register read access is enabled by setting SPI_RD_EN = 1b and SPI_MODE = 1b in register bank 0. As illustrated in [図 6-11](#), registers are read using two 24-bit SPI frames after SPI_RD_EN and SPI_MODE are set. The first SPI frame selects the register bank. The ADC returns the 16-bit register value in the second SPI frame corresponding to the 8-bit register address.

As illustrated in [図 6-11](#), steps to read a register are:

1. Frame 1: With SPI_RD_EN = 0b, write to register address 0x03 in register bank 0 to select the desired register bank for reading.
2. Frame 2: Set SPI_RD_EN = 1b and SPI_MODE = 1b in register address 0x00 in register bank 0.
3. Frame 3: Read any register in the selected bank using a 24-bit SPI frame containing the desired register address. Repeat this step with the address of any register in the selected bank to read the corresponding register.
4. Frame 4: Set SPI_RD_EN = 0 to disable register reads and re-enable register writes.
5. Repeat steps 1 through 4 to read registers in a different bank.

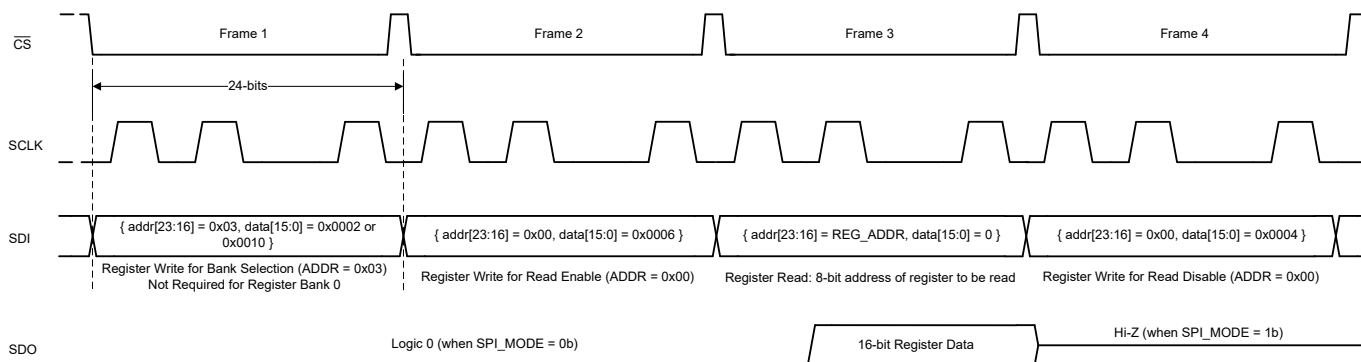


図 6-11. Register Read

6.5.3 Multiple Devices: Daisy-Chain Topology for SPI Configuration

Figure 6-12 shows a typical connection diagram showing multiple devices in a daisy-chain topology.

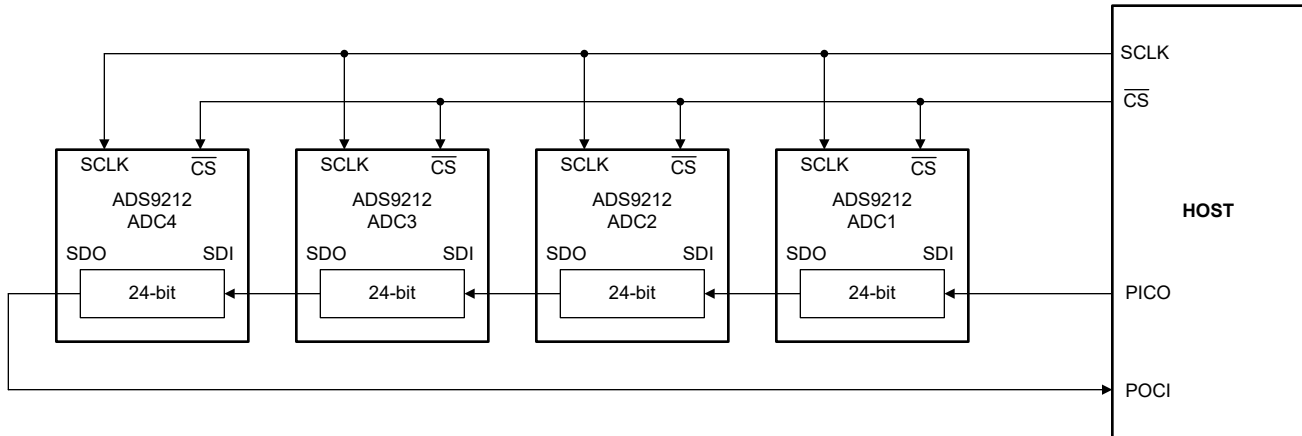


Figure 6-12. Daisy-Chain Connections for SPI Configuration

The \overline{CS} and SCLK inputs of all ADCs are connected together and controlled by a single \overline{CS} and SCLK pin of the controller, respectively. The SDI input pin of the first ADC in the chain (ADC1) is connected to the peripheral IN controller OUT (PICO) pin of the controller, the SDO output pin of ADC1 is connected to the SDI input pin of ADC2, and so on. The SDO output pin of the last ADC in the chain (ADC4) is connected to the peripheral OUT controller IN (POCI) pin of the controller. The data on the PICO pin passes through ADC1 with a 24-SCLK delay, as long as \overline{CS} is active.

The daisy-chain mode must be enabled after power-up or after the device is reset. Set the daisy-chain length in the DAISY_CHAIN_LEN register to enable daisy-chain mode. The daisy-chain length is the number of ADCs in the chain excluding ADC1. In Figure 6-12, the DAISY_CHAIN_LEN = 3.

6.5.3.1 Register Write With Daisy-Chain

Writing to registers in a daisy-chain configuration requires $N \times 24$ -SCLKs in one SPI frame. A register write in a daisy-chain containing four ADCs, as shown in [Figure 6-13](#), requires 96 SCLKs.

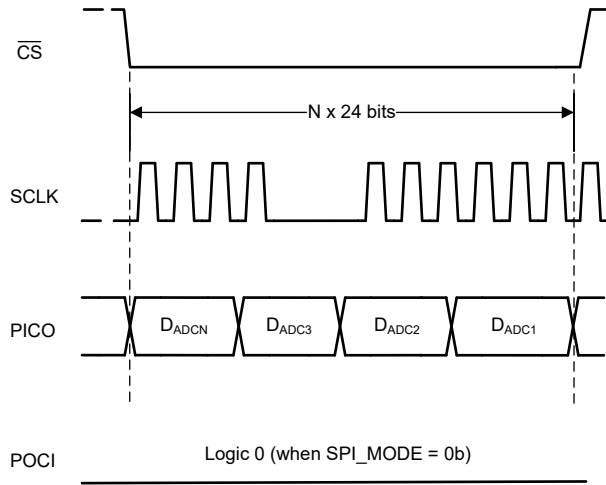


Figure 6-13. Register Write With Daisy-Chain

Daisy-chain mode is enabled on power-up or after device reset. Configure the DAISY_CHAIN_LEN field to enable daisy-chain mode. The waveform shown in [Figure 6-13](#) must be repeated N times, where N is the number of ADCs in the daisy-chain. [Figure 6-14](#) provides the SPI waveform, containing N SPI frames, for enabling daisy-chain mode for N ADCs.

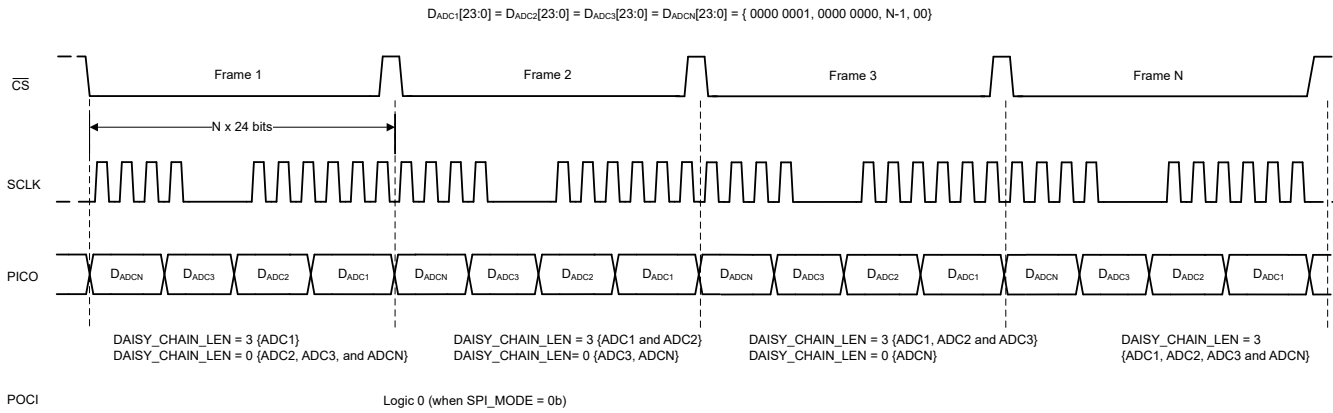


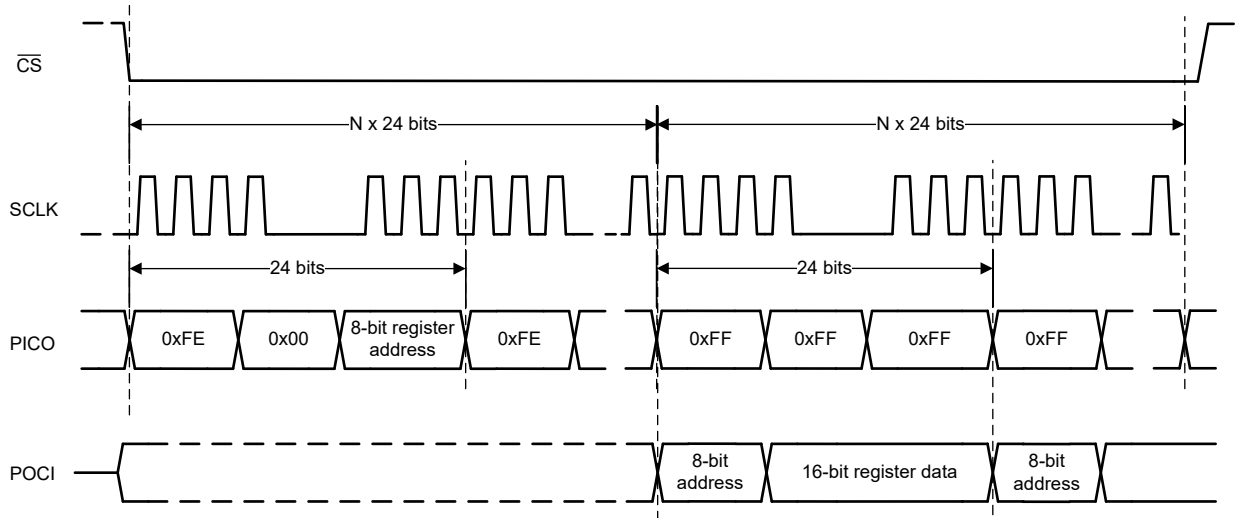
Figure 6-14. Register Write to Configure Daisy-Chain Length

6.5.3.2 Register Read With Daisy-Chain

[Figure 6-15](#) illustrates an SPI waveform for reading registers in a daisy-chain configuration. The steps for reading registers from N ADCs connected in a daisy-chain are as follows:

1. Register read is enabled by writing to the following registers using the [Register Write With Daisy-Chain](#):
 - a. Write to PAGE_SEL to select the desired register bank.
 - b. Enable register read by writing SPI_RD_EN = 0b and SPI_MODE = 0b (default on power-up).
2. With the register bank selected, the controller can read register data in the following two steps:
 - a. $N \times 24$ -bit SPI frame containing the 8-bit register address to be read: N -times {0xFE, 0x00, 8-bit register address}
 - b. $N \times 24$ -bit SPI frame to read out register data: N -times {0xFF, 0xFF, 0xFF}

The 0xFE in step 2a configures the ADC for register read from the specified 8-bit address. At the end of step 2a, the output shift register in the ADC is loaded with register data. The ADC returns the 8-bit register address and corresponding 16-bit register data in step 2b.



6-15. Register Read With Daisy-Chain

7 Register Map

7.1 Register Bank 0

図 7-1. Register Bank 0 Map

| ADD | D15 | D14 | D13 | D12 | D11 | D10 | D9 | D8 | D7 | D6 | D5 | D4 | D3 | D2 | D1 | D0 |
|-----|------------------|-----|-----|-----|-----|-----|----|-----------------|----|----|----|----------|----|----------|-----------|-------|
| 00h | RESERVED | | | | | | | | | | | | | SPI_MODE | SPI_RD_EN | RESET |
| 01h | RESERVED | | | | | | | DAISY_CHAIN_LEN | | | | RESERVED | | | | |
| 03h | RESERVED | | | | | | | REG_BANK_SEL | | | | | | | | |
| 04h | RESERVED | | | | | | | | | | | INIT_1 | | | | |
| 06h | REG_00H_READBACK | | | | | | | | | | | | | | | |

表 7-1. Register Section/Block Access Type Codes

| Access Type | Code | Description |
|------------------------|------|--|
| R | R | Read |
| W | W | Write |
| R/W | R/W | Read or write |
| Reset or Default Value | | |
| -n | | Value after reset or the default value |

7.1.1 Register 00h (offset = 0h) [reset = 0h]

図 7-2. Register 00h

| 15 | 14 | 13 | 12 | 11 | 10 | 9 | 8 |
|----------|----|----|----|----|----------|-----------|-------|
| RESERVED | | | | | | | |
| W-0h | | | | | | | |
| 7 | 6 | 5 | 4 | 3 | 2 | 1 | 0 |
| RESERVED | | | | | SPI_MODE | SPI_RD_EN | RESET |
| W-0h | | | | | W-0h | W-0h | W-0h |

図 7-3. Register 00h Field Descriptions

| Bit | Field | Type | Reset | Description |
|------|-----------|------|-------|---|
| 15-3 | RESERVED | W | 0h | Reserved. Do not change from the default reset value. |
| 2 | SPI_MODE | W | 0h | Select between legacy SPI mode and daisy-chain SPI mode for the configuration interface for register access. 0 : Daisy-chain SPI mode 1 : Legacy SPI mode |
| 1 | SPI_RD_EN | W | 0h | Enable register read access in legacy SPI mode. This bit has no effect in daisy-chain SPI mode. 0 : Register read disabled 1 : Register read enabled |
| 0 | RESET | W | 0h | ADC reset control. 0 : Normal device operation 1 : Reset ADC and all registers |

7.1.2 Register 01h (offset = 1h) [reset = 0h]

図 7-4. Register 01h

| | | | | | | | |
|----------|-----------------|----|----|----|----|----------|---|
| 15 | 14 | 13 | 12 | 11 | 10 | 9 | 8 |
| RESERVED | | | | | | | |
| R/W-0h | | | | | | | |
| 7 | 6 | 5 | 4 | 3 | 2 | 1 | 0 |
| RESERVED | DAISY_CHAIN_LEN | | | | | RESERVED | |
| R/W-0h | R/W-0h | | | | | R/W-0h | |

図 7-5. Register 01h Field Descriptions

| Bit | Field | Type | Reset | Description |
|------|-----------------|------|-------|---|
| 15-7 | RESERVED | R/W | 0h | Reserved. Do not change from the default reset value. |
| 6-2 | DAISY_CHAIN_LEN | R/W | 0h | Configure the number of ADCs connected in daisy-chain for the SPI configuration. 0 : 1 ADC 1 : 2 ADCs 31 : 32 ADCs |
| 1-0 | RESERVED | R/W | 0h | Reserved. Do not change from the default reset value. |

7.1.3 Register 03h (offset = 3h) [reset = 2h]

図 7-6. Register 03h

| | | | | | | | |
|--------------|----|----|----|----|----|---|---|
| 15 | 14 | 13 | 12 | 11 | 10 | 9 | 8 |
| RESERVED | | | | | | | |
| R/W-0h | | | | | | | |
| 7 | 6 | 5 | 4 | 3 | 2 | 1 | 0 |
| REG_BANK_SEL | | | | | | | |
| R/W-2h | | | | | | | |

図 7-7. Register 03h Field Descriptions

| Bit | Field | Type | Reset | Description |
|------|--------------|------|-------|---|
| 15-8 | RESERVED | R/W | 0h | Reserved. Do not change from the default reset value. |
| 7-0 | REG_BANK_SEL | R/W | 2h | Register bank selection for read and write operations. 0 : Select register bank 0 2 : Select register bank 1 16 : Select register bank 2 |

7.1.4 Register 04h (offset = 4h) [reset = 0h]

☒ 7-8. Register 04h

| | | | | | | | |
|----------|----|----|----|--------|----|---|---|
| 15 | 14 | 13 | 12 | 11 | 10 | 9 | 8 |
| RESERVED | | | | | | | |
| R-0h | | | | | | | |
| 7 | 6 | 5 | 4 | 3 | 2 | 1 | 0 |
| RESERVED | | | | INIT_1 | | | |
| R/W-0h | | | | | | | |

☒ 7-9. Register 04h Field Descriptions

| Bit | Field | Type | Reset | Description |
|-----|--------|------|-------|---|
| 3-0 | INIT_1 | R/W | 0h | INIT_1 field for device initialization. Write 1011b during the initialization sequence. Write 0000b for normal operation. |

7.1.5 Register 06h (offset = 6h) [reset = 2h]

☒ 7-10. Register 06h

| | | | | | | | |
|------------------|----|----|----|----|----|---|---|
| 15 | 14 | 13 | 12 | 11 | 10 | 9 | 8 |
| REG_00H_READBACK | | | | | | | |
| R-0h | | | | | | | |
| 7 | 6 | 5 | 4 | 3 | 2 | 1 | 0 |
| REG_00H_READBACK | | | | | | | |
| R-5h | | | | | | | |

☒ 7-11. Register 06h Field Descriptions

| Bit | Field | Type | Reset | Description |
|------|------------------|------|-------|---|
| 15-0 | REG_00H_READBACK | R | 2h | This register is a copy of the register address 0x00 for readback. The register address 0x00 is write-only. The default readback value is 2h because SPI_RD_EN in address 0x00 must be set to 1 for register reads. |

7.2 Register Bank 1

図 7-12. Register Bank 1 Map

| ADD | D15 | D14 | D13 | D12 | D11 | D10 | D9 | D8 | D7 | D6 | D5 | D4 | D3 | D2 | D1 | D0 | |
|-----|----------|-----------------|-------------|-------------|----------|--------------|--------------|-------------|-----------------|-------------|---------------|------------|-------------|----------|--------|----------|--|
| 0Dh | RESERVED | | DATA_FORMAT | RESERVED | | | | GE_CAL_EN1 | | RESERVED | | | | | | | |
| 12h | RESERVED | | | | | | | | | | | | XOR_EN | RESERVED | | | |
| 13h | RESERVED | | | | | | | RAMP_INC_A | | | TP_MODE_ADC_A | | TP_EN_ADC_A | RESERVED | | | |
| 14h | TP0_A | | | | | | | | | | | | | | | | |
| 15h | TP1_A | | | | | | | TP0_A | | | | | | | | | |
| 16h | TP1_A | | | | | | | | | | | | | | | | |
| 18h | RESERVED | | | | | | | RAMP_INC_B | | | TP_MODE_ADC_B | | TP_EN_ADC_B | RESERVED | | | |
| 19h | TP0_B | | | | | | | | | | | | | | | | |
| 1Ah | TP1_B | | | | | | | TP0_B | | | | | | | | | |
| 1Bh | TP1_B | | | | | | | | | | | | | | | | |
| 1Ch | RESERVED | USER_BITS_ADC_B | | | | | | RESERVED | USER_BITS_ADC_A | | | | | | | | |
| 33h | RESERVED | GE_CAL_EN3 | RESERVED | | | | | GE_CAL_EN2 | INIT_KEY | | RESERVED | | | | | | |
| 34h | RESERVED | | | | | | | | | | | GE_CAL_EN4 | RESERVED | | | | |
| 37h | RESERVED | | | | | | | | | | | | | INIT_RDY | | | |
| C0h | RESERVED | | | | | | | | BW_ADC_B | RESERVED | BW_ADC_A | RESERVED | PD_CH | | | | |
| C1h | RESERVED | | | PD_REF | RESERVED | DATA_LANES | DATA_RATE | RESERVED | | | | | | | | | |
| C2h | RESERVED | | | RANGE_ADC_A | | | | RESERVED | | | | | | | | | |
| C3h | RESERVED | | | | | | | RANGE_ADC_B | | | | RESERVED | | | | | |
| C4h | RESERVED | | | | | CM_RNG_ADC_B | CM_RNG_ADC_A | RESERVED | | CM_EN_ADC_B | CM_EN_ADC_A | RESERVED | PD_CHIP | | | | |
| C5h | RESERVED | | | | | | | | | | | CM_CTL_EN | RESERVED | | | | |
| F4h | RESERVED | | | | | | | | | | | | | | INIT | RESERVED | |
| F6h | RESERVED | | | | | | | | | | | | | | INIT_2 | RESERVED | |

表 7-2. Register Section/Block Access Type Codes

| Access Type | Code | Description |
|------------------------|------|--|
| R | R | Read |
| W | W | Write |
| R/W | R/W | Read or write |
| Reset or Default Value | | |
| -n | | Value after reset or the default value |

7.2.1 Register 0Dh (offset = Dh) [reset = 2002h]

☒ 7-13. Register 0Dh

| | | | | | | | | |
|------------|----|-------------|----------|----|----|---|------------|--|
| 15 | 14 | 13 | 12 | 11 | 10 | 9 | 8 | |
| RESERVED | | DATA_FORMAT | RESERVED | | | | GE_CAL_EN1 | |
| R/W-0h | | R/W-1h | R/W-0h | | | | R/W-0h | |
| 7 | 6 | 5 | 4 | 3 | 2 | 1 | 0 | |
| GE_CAL_EN1 | | RESERVED | | | | | | |
| R/W-0h | | R/W-2h | | | | | | |

☒ 7-14. Register 0Dh Field Descriptions

| Bit | Field | Type | Reset | Description |
|-------|-------------|------|-------|---|
| 15-14 | RESERVED | R/W | 0h | Reserved. Do not change from the default reset value. |
| 13 | DATA_FORMAT | R/W | 1h | Select data format for the ADC conversion result. 0 : Straight binary format 1 : Two's-complement format |
| 12-9 | RESERVED | R/W | 0h | Reserved. Do not change from the default reset value. |
| 8-7 | GE_CAL_EN1 | R/W | 0h | Global control for gain error calibration. 0 : Gain error calibration disabled for all channels 3 : Gain error calibration enabled for all channels |
| 6-0 | RESERVED | R/W | 2h | Reserved. Do not change from the default reset value. |

7.2.2 Register 12h (offset = 12h) [reset = 2h]

☒ 7-15. Register 12h

| | | | | | | | |
|----------|----|----|----|--------|----------|---|---|
| 15 | 14 | 13 | 12 | 11 | 10 | 9 | 8 |
| RESERVED | | | | | | | |
| R/W-0h | | | | | | | |
| 7 | 6 | 5 | 4 | 3 | 2 | 1 | 0 |
| RESERVED | | | | XOR_EN | RESERVED | | |
| R/W-0h | | | | R/W-0h | R/W-2h | | |

☒ 7-16. Register 12h Field Descriptions

| Bit | Field | Type | Reset | Description |
|------|----------|------|-------|---|
| 15-4 | RESERVED | R/W | 0h | Reserved. Do not change from the default reset value. |
| 3 | XOR_EN | R/W | 0h | Enables XOR operation on ADC conversion result. 0 : XOR operation is disabled 1 : ADC conversion result is bit-wise XOR with the LSB of the ADC conversion result |
| 2-0 | RESERVED | R/W | 2h | Reserved. Do not change from the default reset value. |

7.2.3 Register 13h (offset = 13h) [reset = 0h]

7-17. Register 13h

| | | | | | | | |
|------------|----|----|----|---------------|----|-------------|----------|
| 15 | 14 | 13 | 12 | 11 | 10 | 9 | 8 |
| RESERVED | | | | | | | |
| R/W-0h | | | | | | | |
| 7 | 6 | 5 | 4 | 3 | 2 | 1 | 0 |
| RAMP_INC_A | | | | TP_MODE_ADC_A | | TP_EN_ADC_A | RESERVED |
| R/W-0h | | | | R/W-0h | | R/W-0h | R/W-0h |

7-18. Register 13h Field Descriptions

| Bit | Field | Type | Reset | Description |
|------|------------|------|-------|--|
| 15-8 | RESERVED | R/W | 0h | Reserved. Do not change from the default reset value. |
| 7-4 | RAMP_INC_A | R/W | 0h | Increment value for the ramp pattern output. The output ramp increments by N+1, where N is the value configured in this register. |
| 3-2 | TP_MODE__A | R/W | 0h | Select digital test pattern for ADC A. 0 : Fixed pattern from the TP0_A register 1 : Fixed pattern from the TP0_A register 2 : Digital ramp output 3 : Alternate fixed pattern output from the TP0_A and TP1_A registers |
| 1 | TP_EN__A | R/W | 0h | Enable digital test pattern for data corresponding to ADC A. 0 : Data output is the ADC conversion result 1 : Data output is the digital test pattern |
| 0 | RESERVED | R/W | 0h | Reserved. Do not change from the default reset value. |

7.2.4 Register 14h (offset = 14h) [reset = 0h]

7-19. Register 14h

| | | | | | | | |
|-------------|----|----|----|----|----|---|---|
| 15 | 14 | 13 | 12 | 11 | 10 | 9 | 8 |
| TP0_A[15:0] | | | | | | | |
| R/W-0h | | | | | | | |
| 7 | 6 | 5 | 4 | 3 | 2 | 1 | 0 |
| TP0_A[15:0] | | | | | | | |
| R/W-0h | | | | | | | |

7-20. Register 14h Field Descriptions

| Bit | Field | Type | Reset | Description |
|------|-------------|------|-------|---------------------------------|
| 15-0 | TP0_A[15:0] | R/W | 0h | Lower 16 bits of test pattern 0 |

7.2.5 Register 15h (offset = 15h) [reset = 0h]

☒ 7-21. Register 15h

| | | | | | | | |
|--------------|----|----|----|----|----|---|---|
| 15 | 14 | 13 | 12 | 11 | 10 | 9 | 8 |
| TP1_A[7:0] | | | | | | | |
| R/W-0h | | | | | | | |
| 7 | 6 | 5 | 4 | 3 | 2 | 1 | 0 |
| TP0_A[23:16] | | | | | | | |
| R/W-0h | | | | | | | |

☒ 7-22. Register 15h Field Descriptions

| Bit | Field | Type | Reset | Description |
|------|--------------|------|-------|------------------------------------|
| 15-8 | TP1_A[7:0] | R/W | 0h | Lower eight bits of test pattern 1 |
| 7-0 | TP0_A[23:16] | R/W | 0h | Upper eight bits of test pattern 0 |

7.2.6 Register 16h (offset = 16h) [reset = 0h]

☒ 7-23. Register 16h

| | | | | | | | |
|-------------|----|----|----|----|----|---|---|
| 15 | 14 | 13 | 12 | 11 | 10 | 9 | 8 |
| TP1_A[23:8] | | | | | | | |
| R/W-0h | | | | | | | |
| 7 | 6 | 5 | 4 | 3 | 2 | 1 | 0 |
| TP1_A[23:8] | | | | | | | |
| R/W-0h | | | | | | | |

☒ 7-24. Register 16h Field Descriptions

| Bit | Field | Type | Reset | Description |
|------|-------------|------|-------|---------------------------------|
| 15-0 | TP1_A[23:8] | R/W | 0h | Upper 16 bits of test pattern 1 |

7.2.7 Register 18h (offset = 18h) [reset = 0h]

7-25. Register 18h

| | | | | | | | |
|------------|----|----|----|-----------|----|---------|----------|
| 15 | 14 | 13 | 12 | 11 | 10 | 9 | 8 |
| RESERVED | | | | | | | |
| R/W-0h | | | | | | | |
| 7 | 6 | 5 | 4 | 3 | 2 | 1 | 0 |
| RAMP_INC_B | | | | TP_MODE_B | | TP_EN_B | RESERVED |
| R/W-0h | | | | R/W-0h | | R/W-0h | R/W-0h |

7-26. Register 18h Field Descriptions

| Bit | Field | Type | Reset | Description |
|------|------------|------|-------|--|
| 15-8 | RESERVED | R/W | 0h | Reserved. Do not change from the default reset value. |
| 7-4 | RAMP_INC_B | R/W | 0h | Increment value for the ramp pattern output. The output ramp increments by N+1, where N is the value configured in this register. |
| 3-2 | TP_MODE_B | R/W | 0h | Select digital test pattern for ADC B. 0 : Fixed pattern from the TP0_B register 1 : Fixed pattern from the TP0_B register 2 : Digital ramp output 3 : Alternate fixed pattern output from the TP0_B and TP1_B registers |
| 1 | TP_EN_B | R/W | 0h | Enable digital test pattern for data corresponding to ADC B. 0 : Data output is the ADC conversion result 1 : Data output is the digital test pattern |
| 0 | RESERVED | R/W | 0h | Reserved. Do not change from the default reset value. |

7.2.8 Register 19h (offset = 19h) [reset = 0h]

7-27. Register 19h

| | | | | | | | |
|-------------|----|----|----|----|----|---|---|
| 15 | 14 | 13 | 12 | 11 | 10 | 9 | 8 |
| TP0_B[15:0] | | | | | | | |
| R/W-0h | | | | | | | |
| 7 | 6 | 5 | 4 | 3 | 2 | 1 | 0 |
| TP0_B[15:0] | | | | | | | |
| R/W-0h | | | | | | | |

7-28. Register 19h Field Descriptions

| Bit | Field | Type | Reset | Description |
|------|-------------|------|-------|---------------------------------|
| 15-0 | TP0_B[15:0] | R/W | 0h | Lower 16 bits of test pattern 0 |

7.2.9 Register 1Ah (offset = 1Ah) [reset = 0h]

☒ 7-29. Register 1Ah

| | | | | | | | |
|--------------|----|----|----|----|----|---|---|
| 15 | 14 | 13 | 12 | 11 | 10 | 9 | 8 |
| TP1_B[7:0] | | | | | | | |
| R/W-0h | | | | | | | |
| 7 | 6 | 5 | 4 | 3 | 2 | 1 | 0 |
| TP0_B[23:16] | | | | | | | |
| R/W-0h | | | | | | | |

☒ 7-30. Register 1Ah Field Descriptions

| Bit | Field | Type | Reset | Description |
|------|--------------|------|-------|------------------------------------|
| 15-8 | TP1_B[7:0] | R/W | 0h | Lower eight bits of test pattern 1 |
| 7-0 | TP0_B[23:16] | R/W | 0h | Upper eight bits of test pattern 0 |

7.2.10 Register 1Bh (offset = 1Bh) [reset = 0h]

☒ 7-31. Register 1Bh

| | | | | | | | |
|-------------|----|----|----|----|----|---|---|
| 15 | 14 | 13 | 12 | 11 | 10 | 9 | 8 |
| TP1_B[23:8] | | | | | | | |
| R/W-0h | | | | | | | |
| 7 | 6 | 5 | 4 | 3 | 2 | 1 | 0 |
| TP1_B[23:8] | | | | | | | |
| R/W-0h | | | | | | | |

☒ 7-32. Register 1Bh Field Descriptions

| Bit | Field | Type | Reset | Description |
|------|-------------|------|-------|---------------------------------|
| 15-0 | TP1_B[23:8] | R/W | 0h | Upper 16 bits of test pattern 1 |

Register 1Ch (offset = 1Ch) [reset = 0h]

☒ 7-33. Register 1Ch

| | | | | | | | |
|----------|----|-----------------|----|----|----|---|---|
| 15 | 14 | 13 | 12 | 11 | 10 | 9 | 8 |
| RESERVED | | USER_BITS_ADC_B | | | | | |
| R/W-0h | | R/W-0h | | | | | |
| 7 | 6 | 5 | 4 | 3 | 2 | 1 | 0 |
| RESERVED | | USER_BITS_ADC_A | | | | | |
| R/W-0h | | R/W-0h | | | | | |

☒ 7-34. Register 1Ch Field Descriptions

| Bit | Field | Type | Reset | Description |
|------|-----------------|------|-------|---|
| 15-8 | USER_BITS_ADC_B | R/W | 0h | User-defined bits appended to the ADC conversion result from ADC B. |
| 7-0 | USER_BITS_ADC_A | R/W | 0h | User-defined bits appended to the ADC conversion result from ADC A. |

7.2.11 Register 33h (offset = 33h) [reset = 0h]

☒ 7-35. Register 33h

| | | | | | | | |
|----|----|----|----|----|----|---|---|
| 15 | 14 | 13 | 12 | 11 | 10 | 9 | 8 |
|----|----|----|----|----|----|---|---|

図 7-35. Register 33h (続き)

| | | | | | | | |
|----------|------------|------------|----------|----------|---|---|---|
| RESERVED | | GE_CAL_EN3 | RESERVED | | | | |
| R/W-0h | | R/W-0h | R/W-0h | | | | |
| 7 | 6 | 5 | 4 | 3 | 2 | 1 | 0 |
| RESERVED | GE_CAL_EN2 | INIT_KEY | | RESERVED | | | |
| R/W-0h | R/W-0h | R/W-0h | | R/W-0h | | | |

図 7-36. Register 33h Field Descriptions

| Bit | Field | Type | Reset | Description |
|-------|------------|------|-------|---|
| 15-14 | RESERVED | R/W | 0h | Reserved. Do not change from the default reset value. |
| 13 | GE_CAL_EN3 | R/W | 0h | Global control for gain error calibration. 0 : Gain error calibration disabled for all channels 1 : Gain error calibration enabled for all channels |
| 12-7 | RESERVED | R/W | 0h | Reserved. Do not change from the default reset value. |
| 6 | GE_CAL_EN2 | R/W | 0h | Global control for gain error calibration. 0 : Gain error calibration disabled for all channels 1 : Gain error calibration enabled for all channels |
| 5-4 | INIT_KEY | R/W | 0h | Device initialization sequence access key. Write 11b to access the device initialization sequence. Write 00b for normal operation. |
| 3-0 | RESERVED | R/W | 0h | Reserved. Do not change from the default reset value. |

7.2.12 Register 34h (offset = 34h) [reset = 0h]

図 7-37. Register 34h

| | | | | | | | |
|----------|----|----|------------|----------|----|---|---|
| 15 | 14 | 13 | 12 | 11 | 10 | 9 | 8 |
| RESERVED | | | | | | | |
| R/W-0h | | | | | | | |
| 7 | 6 | 5 | 4 | 3 | 2 | 1 | 0 |
| RESERVED | | | GE_CAL_EN4 | RESERVED | | | |
| R/W-0h | | | R/W-0h | R/W-0h | | | |

図 7-38. Register 34h Field Descriptions

| Bit | Field | Type | Reset | Description |
|------|------------|------|-------|---|
| 15-5 | RESERVED | R/W | 0h | Reserved. Do not change from the default reset value. |
| 4 | GE_CAL_EN4 | R/W | 0h | Global control for gain error calibration. 0 : Gain error calibration disabled for all channels 1 : Gain error calibration enabled for all channels |
| 3-0 | RESERVED | R/W | 0h | Reserved. Do not change from the default reset value. |

7.2.13 Register 37h (offset = 37h) [reset = 0h]

図 7-39. Register 37h

| | | | | | | | |
|----------|----|----|----|----|----------|---|---|
| 15 | 14 | 13 | 12 | 11 | 10 | 9 | 8 |
| RESERVED | | | | | | | |
| R/W-0h | | | | | | | |
| 7 | 6 | 5 | 4 | 3 | 2 | 1 | 0 |
| RESERVED | | | | | INIT_RDY | | |
| R/W-0h | | | | | R/W-0h | | |

図 7-40. Register 37h Field Descriptions

| Bit | Field | Type | Reset | Description |
|------|----------|------|-------|---|
| 15-3 | RESERVED | R/W | 0h | Reserved. Do not change from default reset value. |
| 2-0 | INIT_RDY | R/W | 0h | Write 101b for normal device operation. |

7.2.14 Register C0h (offset = C0h) [reset = 0h]

図 7-41. Register C0h

| | | | | | | | |
|----------|----------|----|----------|----------|----|--------|---|
| 15 | 14 | 13 | 12 | 11 | 10 | 9 | 8 |
| RESERVED | | | | | | | |
| R/W-0h | | | | | | | |
| 7 | 6 | 5 | 4 | 3 | 2 | 1 | 0 |
| BW_ADC_B | RESERVED | | BW_ADC_A | RESERVED | | PD_CH | |
| R/W-0h | R/W-0h | | | R/W-0h | | R/W-0h | |

図 7-42. Register C0h Field Descriptions

| Bit | Field | Type | Reset | Description |
|------|----------|------|-------|--|
| 15-8 | RESERVED | R/W | 0h | Reserved. Do not change from the default reset value. |
| 7 | BW_ADC_B | R/W | 0h | Select analog input bandwidth for ADC B 0 : Low-noise mode 1 : Wide-bandwidth mode |

図 7-42. Register C0h Field Descriptions (続き)

| Bit | Field | Type | Reset | Description |
|-----|----------|------|-------|--|
| 6-5 | RESERVED | R/W | 0h | Reserved. Do not change from the default reset value. |
| 4 | BW_ADC_A | R/W | 0h | Select analog input bandwidth for ADC A 0 : Low-noise mode 1 : Wide-bandwidth mode |
| 3-2 | RESERVED | R/W | 0h | Reserved. Do not change from the default reset value. |
| 1-0 | PD_CH | R/W | 0h | Power-down control for the analog input channels. 0 : Normal operation 1 : ADC B powered down 2 : ADC A powered down 3 : All channels powered down |

7.2.15 Register C1h (offset = C1h) [reset = 0h]

図 7-43. Register C1h

| | | | | | | | |
|----------|----|----|----|--------|----------|------------|-----------|
| 15 | 14 | 13 | 12 | 11 | 10 | 9 | 8 |
| RESERVED | | | | PD_REF | RESERVED | DATA_LANES | DATA_RATE |
| R/W-0h | | | | R/W-0h | R/W-0h | R/W-0h | R/W-0h |
| 7 | 6 | 5 | 4 | 3 | 2 | 1 | 0 |
| RESERVED | | | | | | | |
| R/W-0h | | | | | | | |

図 7-44. Register C1h Field Descriptions

| Bit | Field | Type | Reset | Description |
|-------|------------|------|-------|---|
| 15-12 | RESERVED | R/W | 0h | Reserved. Do not change from the default reset value. |
| 11 | PD_REF | R/W | 0h | ADC reference voltage source selection. 0 : Internal reference enabled. 1 : Internal reference disabled. Connect the external reference voltage to the REFIO pin. |
| 10 | RESERVED | R/W | 0h | Reserved. Do not change from the default reset value. |
| 9 | DATA_LANES | R/W | 0h | Select number of output data lanes per ADC channel. 0 : 4-lane mode. ADC A data are output on pins D3 and D2. ADC B data are output on pins D1 and D0. 1 : 2-lane mode. ADC A data are output on pin D3. ADC B data are output on pin D1. |
| 8 | DATA_RATE | R/W | 0h | Select data rate for the data interface. 0 : Double data rate (DDR) 1 : Single data rate (SDR) |
| 7-0 | RESERVED | R/W | 0h | Reserved. Do not change from the default reset value. |

7.2.16 Register C2h (offset = C2h) [reset = 0h]

図 7-45. Register C2h

| | | | | | | | |
|----------|----|----|----|-------------|----|---|---|
| 15 | 14 | 13 | 12 | 11 | 10 | 9 | 8 |
| RESERVED | | | | RANGE_ADC_A | | | |
| R/W-0h | | | | R/W-0h | | | |
| 7 | 6 | 5 | 4 | 3 | 2 | 1 | 0 |
| RESERVED | | | | | | | |
| R/W-0h | | | | | | | |

図 7-46. Register C2h Field Descriptions

| Bit | Field | Type | Reset | Description |
|-------|-------------|------|-------|---|
| 15-12 | RESERVED | R/W | 0h | Reserved. Do not change from the default reset value. |
| 11-8 | RANGE_ADC_A | R/W | 0h | Select input voltage range for ADC A. 0 : ±5V 1 : ±3.5V 2 : ±2.5V 3 : ±7V 4 : ±10V 5 : ±12V |
| 7-0 | RESERVED | R/W | 0h | Reserved. Do not change from the default reset value. |

7.2.17 Register C3h (offset = C3h) [reset = 0h]

☒ 7-47. Register C3h

| | | | | | | | |
|-------------|----|----|----|----------|----|---|---|
| 15 | 14 | 13 | 12 | 11 | 10 | 9 | 8 |
| RESERVED | | | | | | | |
| R/W-0h | | | | | | | |
| 7 | 6 | 5 | 4 | 3 | 2 | 1 | 0 |
| RANGE_ADC_B | | | | RESERVED | | | |
| R/W-0h | | | | R/W-0h | | | |

☒ 7-48. Register C3h Field Descriptions

| Bit | Field | Type | Reset | Description |
|------|-------------|------|-------|---|
| 15-8 | RESERVED | R/W | 0h | Reserved. Do not change from the default reset value. |
| 7-4 | RANGE_ADC_B | R/W | 0h | Select input voltage range for ADC B. 0 : ±5V 1 : ±3.5V 2 : ±2.5V 3 : ±7V 4 : ±10V 5 : ±12V |
| 3-0 | RESERVED | R/W | 0h | Reserved. Do not change from the default reset value. |

7.2.18 Register C4h (offset = C4h) [reset = 0h]

☒ 7-49. Register C4h

| | | | | | | | |
|--------------|----|----------|----|-------------|-------------|--------------|---------|
| 15 | 14 | 13 | 12 | 11 | 10 | 9 | 8 |
| RESERVED | | | | | | CM_RNG_ADC B | |
| R/W-0h | | | | | | R/W-0h | |
| 7 | 6 | 5 | 4 | 3 | 2 | 1 | 0 |
| CM_RNG_ADC A | | RESERVED | | CM_EN_ADC B | CM_EN_ADC A | RESERVED | PD_CHIP |
| R/W-0h | | R/W-0h | | R/W-0h | R/W-0h | R/W-0h | R/W-0h |

☒ 7-50. Register C4h Field Descriptions

| Bit | Field | Type | Reset | Description |
|-------|--------------|------|-------|---|
| 15-10 | RESERVED | R/W | 0h | Reserved. Do not change from the default reset value. |
| 9-8 | CM_RNG_ADC B | R/W | 0h | CM_RNG_ADC B sets the common-mode voltage range for ADC B. |
| 7-6 | CM_RNG_ADC A | R/W | 0h | CM_RNG_ADC A sets the common-mode voltage range for ADC A 0 : CM range equal to \pm RANGE / 2 1 : CM range equal to \pm 6V 2 : CM range equal to \pm 12V |
| 5-4 | RESERVED | R/W | 0h | Reserved. Do not change from the default reset value. |
| 3 | CM_EN_ADC B | R/W | 0h | CM_EN_ADC B enables the common-mode range control for ADC B. |
| 2 | CM_EN_ADC A | R/W | 0h | CM_EN_ADC A enables the common-mode range control for ADC A 0 : Wide-common-mode range control disabled 1 : Wide-common-mode range control enabled |
| 1 | RESERVED | R/W | 0h | Reserved. Do not change from the default reset value. |
| 0 | PD_CHIP | R/W | 0h | Full chip power-down control. 0 : Normal device operation 1 : Full device powered-down |

7.2.19 Register C5h (offset = C5h) [reset = 0h]

☒ 7-51. Register C5h

| | | | | | | | |
|----------|----|----|------------|----------|----|---|---|
| 15 | 14 | 13 | 12 | 11 | 10 | 9 | 8 |
| RESERVED | | | | | | | |
| R/W-0h | | | | | | | |
| 7 | 6 | 5 | 4 | 3 | 2 | 1 | 0 |
| RESERVED | | | CM_CTRL_EN | RESERVED | | | |
| R/W-0h | | | R/W-0h | R/W-0h | | | |

☒ 7-52. Register C5h Field Descriptions

| Bit | Field | Type | Reset | Description |
|------|------------|------|-------|--|
| 15-5 | RESERVED | R/W | 0h | Reserved. Do not change from the default reset value. |
| 4 | CM_CTRL_EN | R/W | 0h | Enable wide-common-mode range control for all analog input channels. 0 : CM range for all analog input channels is ±12V 1 : CM range is user-defined in the CM_EN_ADC B, CM_EN_ADC B, CM_RNG_ADC A, and CM_RNG_ADC B registers |
| 3-0 | RESERVED | R/W | 0h | Reserved. Do not change from the default reset value. |

7.2.20 Register F4h (offset = F4h) [reset = 0h]

☒ 7-53. Register F4h

| | | | | | | | |
|----------|----|----|----|----|----|--------|----------|
| 15 | 14 | 13 | 12 | 11 | 10 | 9 | 8 |
| RESERVED | | | | | | | |
| R/W-0h | | | | | | | |
| 7 | 6 | 5 | 4 | 3 | 2 | 1 | 0 |
| RESERVED | | | | | | INIT | RESERVED |
| R/W-0h | | | | | | R/W-0h | R/W-0h |

☒ 7-54. Register F4h Field Descriptions

| Bit | Field | Type | Reset | Description |
|------|----------|------|-------|---|
| 15-2 | RESERVED | R/W | 0h | Reserved. Do not change from the default reset value. |
| 1 | INIT | R/W | 0h | INIT field for device initialization. Write 1b during the initialization sequence. Write 0b for normal operation. |
| 0 | RESERVED | R/W | 0h | Reserved. Do not change from the default reset value. |

7.2.21 Register F6h (offset = F6h) [reset = 0h]

7-55. Register F6h

| | | | | | | | |
|----------|----|----|----|----|----|--------|----------|
| 15 | 14 | 13 | 12 | 11 | 10 | 9 | 8 |
| RESERVED | | | | | | | |
| R/W-0h | | | | | | | |
| 7 | 6 | 5 | 4 | 3 | 2 | 1 | 0 |
| RESERVED | | | | | | INIT_2 | RESERVED |
| R/W-0h | | | | | | R/W-0h | R/W-0h |

7-56. Register F6h Field Descriptions

| Bit | Field | Type | Reset | Description |
|------|----------|------|-------|---|
| 15-2 | RESERVED | R/W | 0h | Reserved. Do not change from the default reset value. |
| 1 | INIT_2 | R/W | 0h | INIT_2 field for device initialization. Write 1b during the initialization sequence. Write 0b for normal operation. |
| 0 | RESERVED | R/W | 0h | Reserved. Do not change from the default reset value. |

7.3 Register Bank 2

図 7-57. Register Bank 2 Map

| ADD | D15 | D14 | D13 | D12 | D11 | D10 | D9 | D8 | D7 | D6 | D5 | D4 | D3 | D2 | D1 | D0 |
|-----|----------|----------|----------|-----|---------|---------|----|----------|----------|--------|----------|----|----|----|----|----|
| 0Ah | RESERVED | INIT_5 | RESERVED | | | | | | | | | | | | | |
| 12h | RESERVED | | | | | | | | | INIT_3 | RESERVED | | | | | |
| 13h | INIT_4 | RESERVED | | | | | | | | | | | | | | |
| 19h | RESERVED | | | | | INIT_4A | | | RESERVED | | | | | | | |
| 1F | RESERVED | | | | INIT_5A | | | RESERVED | | | | | | | | |

表 7-3. Register Section/Block Access Type Codes

| Access Type | Code | Description |
|------------------------|------|--|
| R | R | Read |
| W | W | Write |
| R/W | R/W | Read or write |
| Reset or Default Value | | |
| -n | | Value after reset or the default value |

7.3.1 Register 0Ah (offset = 0Ah) [reset = 0h]

図 7-58. Register 0Ah

| 15 | 14 | 13 | 12 | 11 | 10 | 9 | 8 |
|----------|--------|----------|----|----|----|---|---|
| RESERVED | INIT_5 | RESERVED | | | | | |
| R/W-0h | R/W-0h | | | | | | |
| 7 | 6 | 5 | 4 | 3 | 2 | 1 | 0 |
| RESERVED | | | | | | | |
| R/W-0h | | | | | | | |

図 7-59. Register 0A Field Descriptions

| Bit | Field | Type | Reset | Description |
|------|----------|------|-------|--|
| 15 | RESERVED | R/W | 0h | Reserved. Do not change from the default reset value. |
| 14 | INIT_5 | R/W | 0h | INIT_5 field for device initialization. Write 1b during initialization sequence. Write 0b for normal operation. Refer to Initialization Sequence for more details. |
| 13-0 | RESERVED | R/W | 0h | Reserved. Do not change from the default reset value. |

7.3.2 Register 12h (offset = 12h) [reset = 0h]

図 7-60. Register 12h

| 15 | 14 | 13 | 12 | 11 | 10 | 9 | 8 |
|----------|--------|----------|----|----|----|---|---|
| RESERVED | | | | | | | |
| R/W-0h | | | | | | | |
| 7 | 6 | 5 | 4 | 3 | 2 | 1 | 0 |
| RESERVED | INIT_3 | RESERVED | | | | | |
| R/W-0h | R/W-0h | R/W-0h | | | | | |

☒ 7-61. Register 12 Field Descriptions

| Bit | Field | Type | Reset | Description |
|------|----------|------|-------|--|
| 15-7 | RESERVED | R/W | 0h | Reserved. Do not change from the default reset value. |
| 6-6 | INIT_3 | R/W | 0h | INIT_3 field for device initialization. Write 1b during the initialization sequence. Write 0b for normal operation. Refer to Initialization Sequence for more details. |
| 5-0 | RESERVED | R/W | 0h | Reserved. Do not change from the default reset value. |

7.3.3 Register 13h (offset = 13h) [reset = 0h]

☒ 7-62. Register 13h

| | | | | | | | |
|----------|----------|----|----|----|----|---|---|
| 15 | 14 | 13 | 12 | 11 | 10 | 9 | 8 |
| INIT_4 | RESERVED | | | | | | |
| R/W-0h | R/W-0h | | | | | | |
| 7 | 6 | 5 | 4 | 3 | 2 | 1 | 0 |
| RESERVED | | | | | | | |
| R/W-0h | | | | | | | |

☒ 7-63. Register 13 Field Descriptions

| Bit | Field | Type | Reset | Description |
|-------|----------|------|-------|--|
| 15-15 | INIT_4 | R/W | 0h | INIT_4 field for device initialization. Write 1b during initialization sequence. Write 0b for normal operation. Refer to Initialization Sequence for more details. |
| 14-0 | RESERVED | R/W | 0h | Reserved. Do not change from the default reset value. |

7.3.4 Register 19h (offset = 19h) [reset = 0h]

☒ 7-64. Register 19h

| | | | | | | | |
|----------|----|----|----|---------|----|---|----------|
| 15 | 14 | 13 | 12 | 11 | 10 | 9 | 8 |
| RESERVED | | | | INIT_4A | | | RESERVED |
| R/W-0h | | | | R/W-0h | | | R/W-0h |
| 7 | 6 | 5 | 4 | 3 | 2 | 1 | 0 |
| RESERVED | | | | | | | |
| R/W-0h | | | | | | | |

☒ 7-65. Register 19 Field Descriptions

| Bit | Field | Type | Reset | Description |
|-------|----------|------|-------|--|
| 15-12 | RESERVED | R/W | 0h | Reserved. Do not change from the default reset value. |
| 11-9 | INIT_4A | R/W | 0h | INIT_4A field for device initialization. Write 111b for normal operation. Refer to Initialization Sequence for more details. |
| 8-0 | RESERVED | R/W | 0h | Reserved. Do not change from the default reset value. |

7.3.5 Register 1Fh (offset = 1Fh) [reset = 0h]

☒ 7-66. Register 1Fh

| | | | | | | | |
|----------|----|----|---------|----|----------|---|---|
| 15 | 14 | 13 | 12 | 11 | 10 | 9 | 8 |
| RESERVED | | | INIT_4A | | RESERVED | | |

図 7-66. Register 1Fh (続き)

| | | | | | | | |
|----------|---|---|--------|---|---|--------|---|
| R/W-0h | | | R/W-0h | | | R/W-0h | |
| 7 | 6 | 5 | 4 | 3 | 2 | 1 | 0 |
| RESERVED | | | | | | | |
| R/W-0h | | | | | | | |

図 7-67. Register 1F Field Descriptions

| Bit | Field | Type | Reset | Description |
|-------|----------|------|-------|---|
| 15-13 | RESERVED | R/W | 0h | Reserved. Do not change from the default reset value. |
| 12-11 | INIT_4A | R/W | 0h | INIT_5A field for device initialization. Write 11b for normal operation. Refer to Initialization Sequence for more details. |
| 10-0 | RESERVED | R/W | 0h | Reserved. Do not change from the default reset value. |

8 Application and Implementation

注

以下のアプリケーション情報は、TI の製品仕様に含まれるものではなく、TI ではその正確性または完全性を保証いたしません。個々の目的に対する製品の適合性については、お客様の責任で判断していただくこととなります。お客様は自身の設計実装を検証しテストすることで、システムの機能を確認する必要があります。

8.1 Application Information

The ADS9212 enables high-precision measurement of up to two analog signals. The following section gives an example application circuit and recommendations for using the ADS9212.

8.2 Typical Application

8.2.1 Parametric Measurement Unit (PMU)

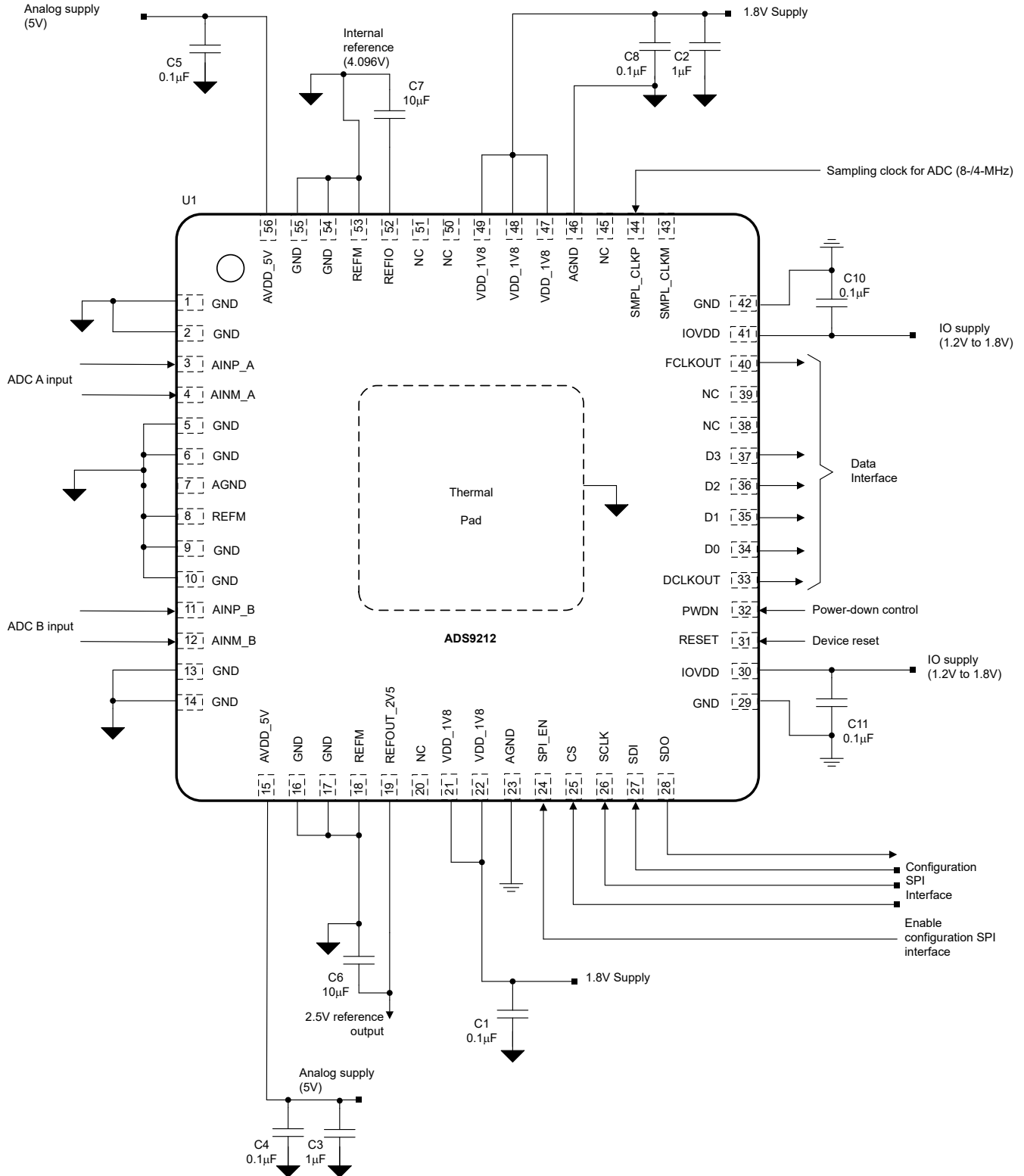


图 8-1. Typical Application

8.2.2 Design Requirements

The following section gives an example circuit and recommendations for using the ADS9212 to measure up to $\pm 12V$ signals. The following table shows the parameters for this design example.

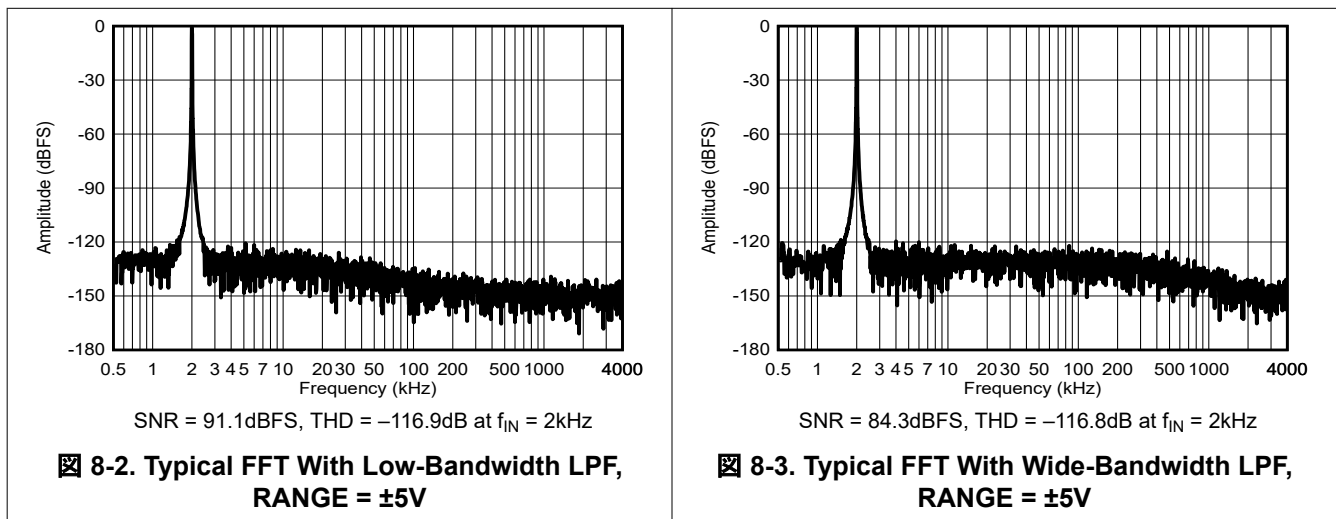
表 8-1. Design Parameters

| PARAMETER | VALUE |
|--------------------------------|---------------------|
| Sampling rate | Up to 8MSPS/channel |
| SNR ($f_{IN} = 2\text{kHz}$) | > 90dB |


8.2.3 Detailed Design Procedure

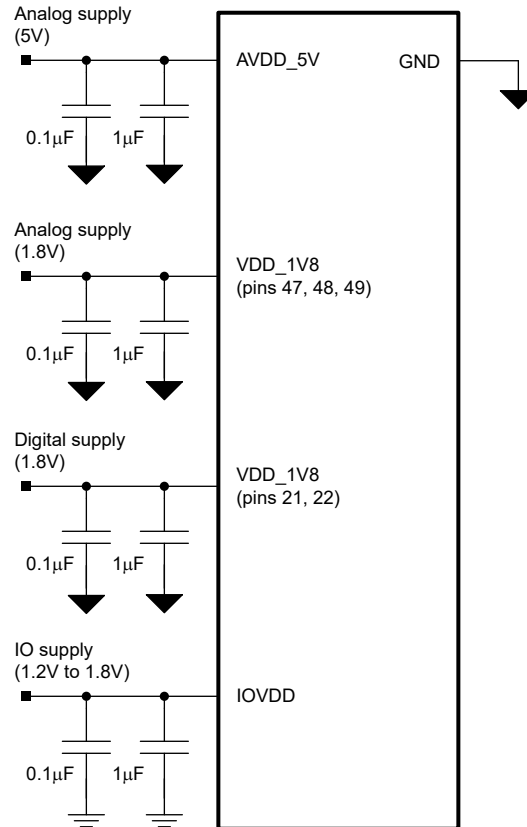
The ADS9212 is a two-channel, 18-bit, 8MSPS ADC. The device has a built-in analog front-end that makes the signal chain easier to design and more accurate. [図 8-1](#) shows the recommended schematic for a data acquisition system using the ADS9212. [図 8-2](#) and [図 8-3](#) show the typical SNR and THD performance of the ADS9212 in low-bandwidth and wide-bandwidth modes for the analog inputs.

8.2.4 Application Curves



8.3 Power Supply Recommendations


The ADS9212 has three separate power supplies: AVDD_5V, VDD_1V8, and IOVDD. There is no requirement for a specific power-up sequence. The data and configuration digital interfaces are powered by IOVDD. A common 1.8V supply powers the VDD_1V8 and IOVDD pins.  8-4 illustrates the decoupling capacitor connections for the respective power supplies. Make sure each power-supply pin has separate decoupling capacitors.



 8-4. Power-Supply Decoupling

8.4 Layout

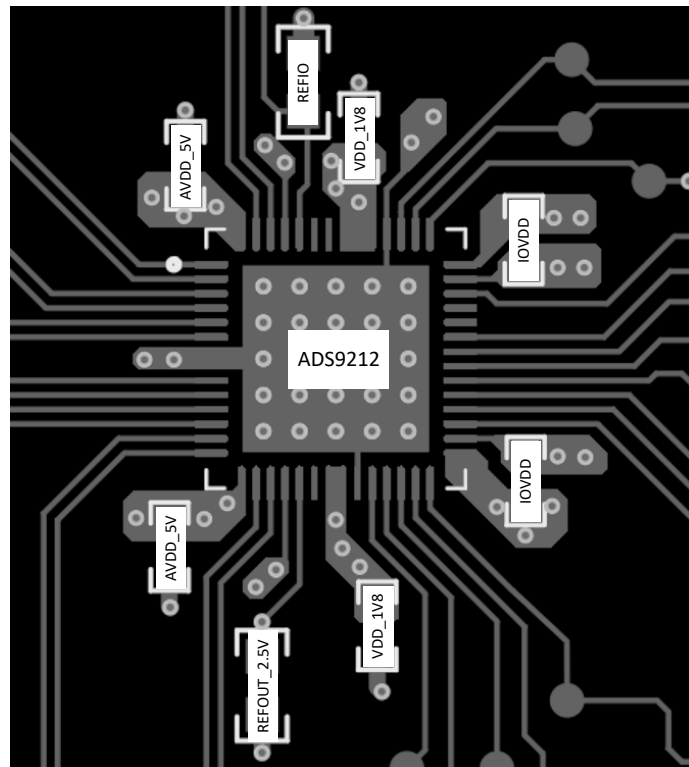
8.4.1 Layout Guidelines

 8-5 illustrates a board layout example for the ADS9212. Avoid crossing digital lines with the analog signal path and keep the analog input signals and the reference signals away from noise sources.

Use 0.1µF ceramic bypass capacitors in close proximity to the AVDD_5V, VDD_1V8, and IOVDD power-supply pins. Avoid placing vias between the power-supply pins and the bypass capacitors.

Place the reference decoupling capacitor close to the device REFIO and REFM pins. Avoid placing vias between the REFIO pin and the bypass capacitors. Connect the GND, REFM, and GND pins to a ground plane using short, low-impedance paths.

8.4.2 Layout Example



 8-5. Example Layout

9 Device and Documentation Support

TI offers an extensive line of development tools. Tools and software to evaluate the performance of the device, generate code, and develop solutions are listed below.

9.1 ドキュメントの更新通知を受け取る方法

ドキュメントの更新についての通知を受け取るには、www.tij.co.jp のデバイス製品フォルダを開いてください。[通知] をクリックして登録すると、変更されたすべての製品情報に関するダイジェストを毎週受け取ることができます。変更の詳細については、改訂されたドキュメントに含まれている改訂履歴をご覧ください。

9.2 サポート・リソース

テキサス・インスツルメンツ E2E™ サポート・フォーラムは、エンジニアが検証済みの回答と設計に関するヒントをエキスパートから迅速かつ直接得ることができる場所です。既存の回答を検索したり、独自の質問をしたりすることで、設計に必要な支援を迅速に得ることができます。

リンクされているコンテンツは、各寄稿者により「現状のまま」提供されるものです。これらはテキサス・インスツルメンツの仕様を構成するものではなく、必ずしもテキサス・インスツルメンツの見解を反映したものではありません。テキサス・インスツルメンツの[使用条件](#)を参照してください。

9.3 Trademarks

テキサス・インスツルメンツ E2E™ is a trademark of Texas Instruments.

すべての商標は、それぞれの所有者に帰属します。

9.4 静電気放電に関する注意事項



この IC は、ESD によって破損する可能性があります。テキサス・インスツルメンツは、IC を取り扱う際には常に適切な注意を払うことを推奨します。正しい取り扱いおよび設置手順に従わない場合、デバイスを破損するおそれがあります。

ESD による破損は、わずかな性能低下からデバイスの完全な故障まで多岐にわたります。精密な IC の場合、パラメータがわずかに変化するだけで公表されている仕様から外れる可能性があるため、破損が発生しやすくなっています。

9.5 用語集

[テキサス・インスツルメンツ用語集](#) この用語集には、用語や略語の一覧および定義が記載されています。

10 Revision History

資料番号末尾の英字は改訂を表しています。その改訂履歴は英語版に準じています。

| DATE | REVISION | NOTES |
|--------------|----------|-----------------|
| October 2024 | * | Initial Release |

11 Mechanical, Packaging, and Orderable Information

The following pages include mechanical, packaging, and orderable information. This information is the most current data available for the designated devices. This data is subject to change without notice and revision of this document. For browser-based versions of this data sheet, refer to the left-hand navigation.

重要なお知らせと免責事項

テキサス・インスツルメンツは、技術データと信頼性データ (データシートを含みます)、設計リソース (リファレンス デザインを含みます)、アプリケーションや設計に関する各種アドバイス、Web ツール、安全性情報、その他のリソースを、欠陥が存在する可能性のある「現状のまま」提供しており、商品性および特定目的に対する適合性の黙示保証、第三者の知的財産権の非侵害保証を含むいかなる保証も、明示的または黙示的にかかわらず拒否します。

これらのリソースは、テキサス・インスツルメンツ製品を使用する設計の経験を積んだ開発者への提供を意図したものです。(1) お客様のアプリケーションに適した テキサス・インスツルメンツ製品の選定、(2) お客様のアプリケーションの設計、検証、試験、(3) お客様のアプリケーションに該当する各種規格や、その他のあらゆる安全性、セキュリティ、規制、または他の要件への確実な適合に関する責任を、お客様のみが単独で負うものとします。

上記の各種リソースは、予告なく変更される可能性があります。これらのリソースは、リソースで説明されている テキサス・インスツルメンツ製品を使用するアプリケーションの開発の目的でのみ、テキサス・インスツルメンツはその使用をお客様に許諾します。これらのリソースに関して、他の目的で複製することや掲載することは禁止されています。テキサス・インスツルメンツや第三者の知的財産権のライセンスが付与されている訳ではありません。お客様は、これらのリソースを自身で使用した結果発生するあらゆる申し立て、損害、費用、損失、責任について、テキサス・インスツルメンツおよびその代理人を完全に補償するものとし、テキサス・インスツルメンツは一切の責任を拒否します。

テキサス・インスツルメンツの製品は、[テキサス・インスツルメンツの販売条件](#)、または [ti.com](https://www.ti.com) やかかる テキサス・インスツルメンツ製品の関連資料などのいずれかを通じて提供する適用可能な条項の下で提供されています。テキサス・インスツルメンツがこれらのリソースを提供することは、適用されるテキサス・インスツルメンツの保証または他の保証の放棄の拡大や変更を意味するものではありません。

お客様がいかなる追加条項または代替条項を提案した場合でも、テキサス・インスツルメンツはそれらに異議を唱え、拒否します。

郵送先住所: Texas Instruments, Post Office Box 655303, Dallas, Texas 75265

Copyright © 2024, Texas Instruments Incorporated

PACKAGING INFORMATION

| Orderable Device | Status (1) | Package Type | Package Drawing | Pins | Package Qty | Eco Plan (2) | Lead finish/ Ball material (6) | MSL Peak Temp (3) | Op Temp (°C) | Device Marking (4/5) | Samples |
|------------------|---------------|--------------|-----------------|------|-------------|-----------------|--------------------------------------|----------------------|--------------|-------------------------|---------|
| ADS9212RSHR | ACTIVE | VQFN | RSH | 56 | 2500 | RoHS & Green | NIPDAU | Level-3-260C-168 HR | -40 to 125 | ADS9212 | Samples |

(1) The marketing status values are defined as follows:

ACTIVE: Product device recommended for new designs.

LIFEBUY: TI has announced that the device will be discontinued, and a lifetime-buy period is in effect.

NRND: Not recommended for new designs. Device is in production to support existing customers, but TI does not recommend using this part in a new design.

PREVIEW: Device has been announced but is not in production. Samples may or may not be available.

OBSELETE: TI has discontinued the production of the device.

(2) **RoHS:** TI defines "RoHS" to mean semiconductor products that are compliant with the current EU RoHS requirements for all 10 RoHS substances, including the requirement that RoHS substance do not exceed 0.1% by weight in homogeneous materials. Where designed to be soldered at high temperatures, "RoHS" products are suitable for use in specified lead-free processes. TI may reference these types of products as "Pb-Free".

RoHS Exempt: TI defines "RoHS Exempt" to mean products that contain lead but are compliant with EU RoHS pursuant to a specific EU RoHS exemption.

Green: TI defines "Green" to mean the content of Chlorine (Cl) and Bromine (Br) based flame retardants meet JS709B low halogen requirements of <=1000ppm threshold. Antimony trioxide based flame retardants must also meet the <=1000ppm threshold requirement.

(3) MSL, Peak Temp. - The Moisture Sensitivity Level rating according to the JEDEC industry standard classifications, and peak solder temperature.

(4) There may be additional marking, which relates to the logo, the lot trace code information, or the environmental category on the device.

(5) Multiple Device Markings will be inside parentheses. Only one Device Marking contained in parentheses and separated by a "-" will appear on a device. If a line is indented then it is a continuation of the previous line and the two combined represent the entire Device Marking for that device.

(6) Lead finish/Ball material - Orderable Devices may have multiple material finish options. Finish options are separated by a vertical ruled line. Lead finish/Ball material values may wrap to two lines if the finish value exceeds the maximum column width.

Important Information and Disclaimer:The information provided on this page represents TI's knowledge and belief as of the date that it is provided. TI bases its knowledge and belief on information provided by third parties, and makes no representation or warranty as to the accuracy of such information. Efforts are underway to better integrate information from third parties. TI has taken and continues to take reasonable steps to provide representative and accurate information but may not have conducted destructive testing or chemical analysis on incoming materials and chemicals. TI and TI suppliers consider certain information to be proprietary, and thus CAS numbers and other limited information may not be available for release.

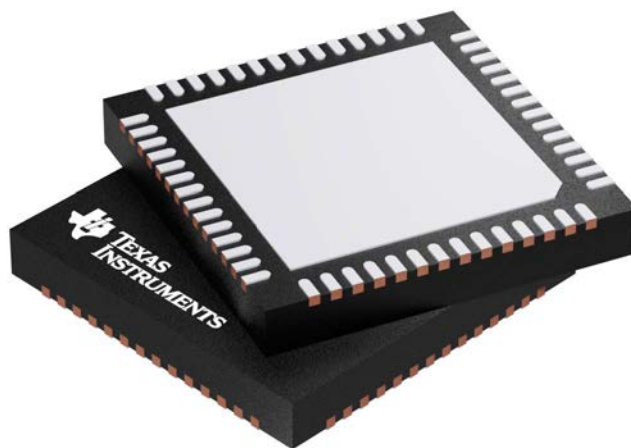
In no event shall TI's liability arising out of such information exceed the total purchase price of the TI part(s) at issue in this document sold by TI to Customer on an annual basis.

RSH 56

GENERIC PACKAGE VIEW

VQFN - 1 mm max height

PLASTIC QUAD FLATPACK - NO LEAD



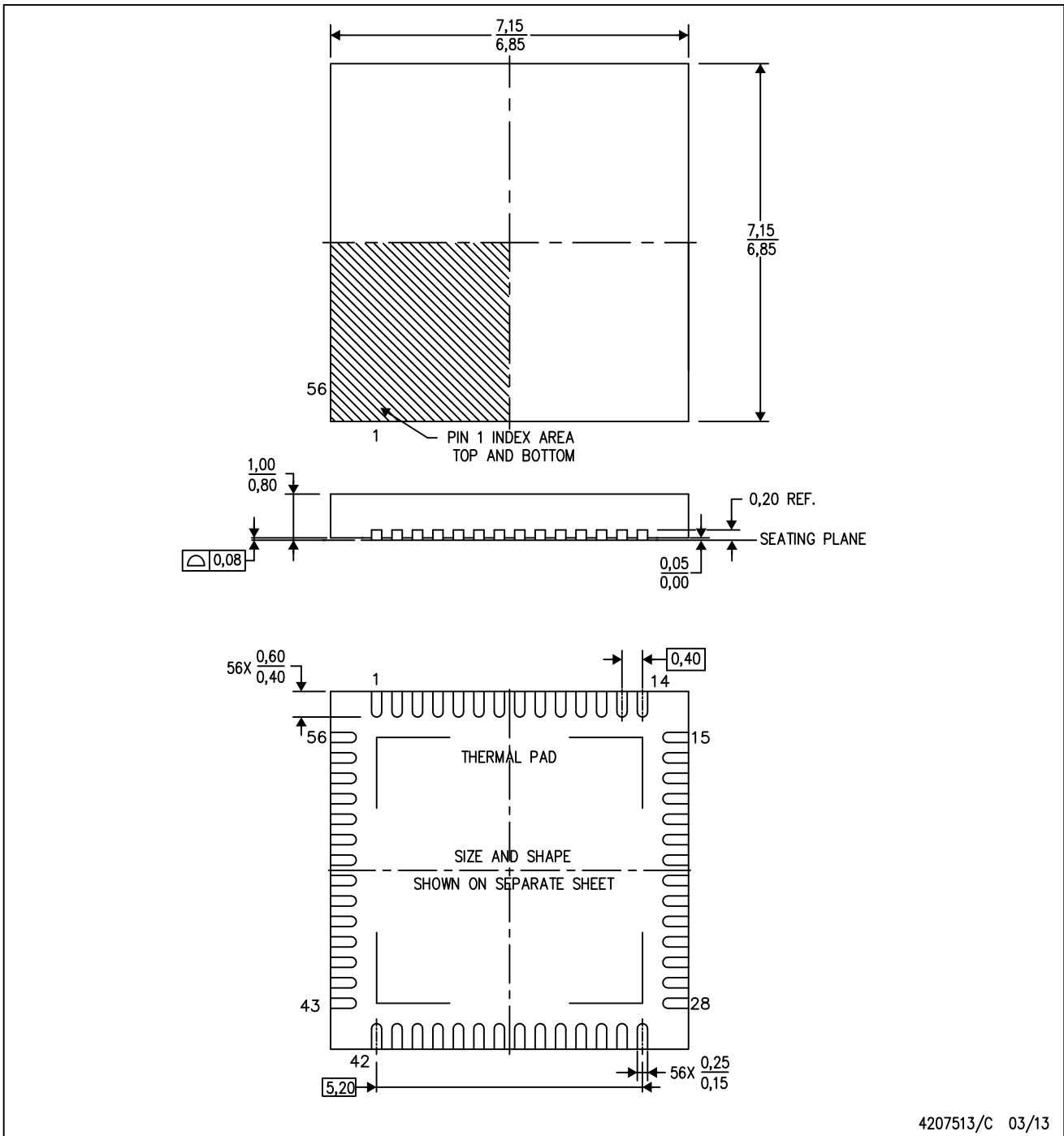
Images above are just a representation of the package family, actual package may vary.
Refer to the product data sheet for package details.

4207513/D

MECHANICAL DATA

RSH (S-PVQFN-N56)

PLASTIC QUAD FLATPACK NO-LEAD



4207513/C 03/13

- NOTES:
- All linear dimensions are in millimeters. Dimensioning and tolerancing per ASME Y14.5M-1994.
 - This drawing is subject to change without notice.
 - Quad Flatpack, No-leads (QFN) package configuration.
 - The package thermal pad must be soldered to the board for thermal and mechanical performance.
 - See the additional figure in the Product Data Sheet for details regarding the exposed thermal pad features and dimensions.

THERMAL PAD MECHANICAL DATA

RSH (S-PVQFN-N56)

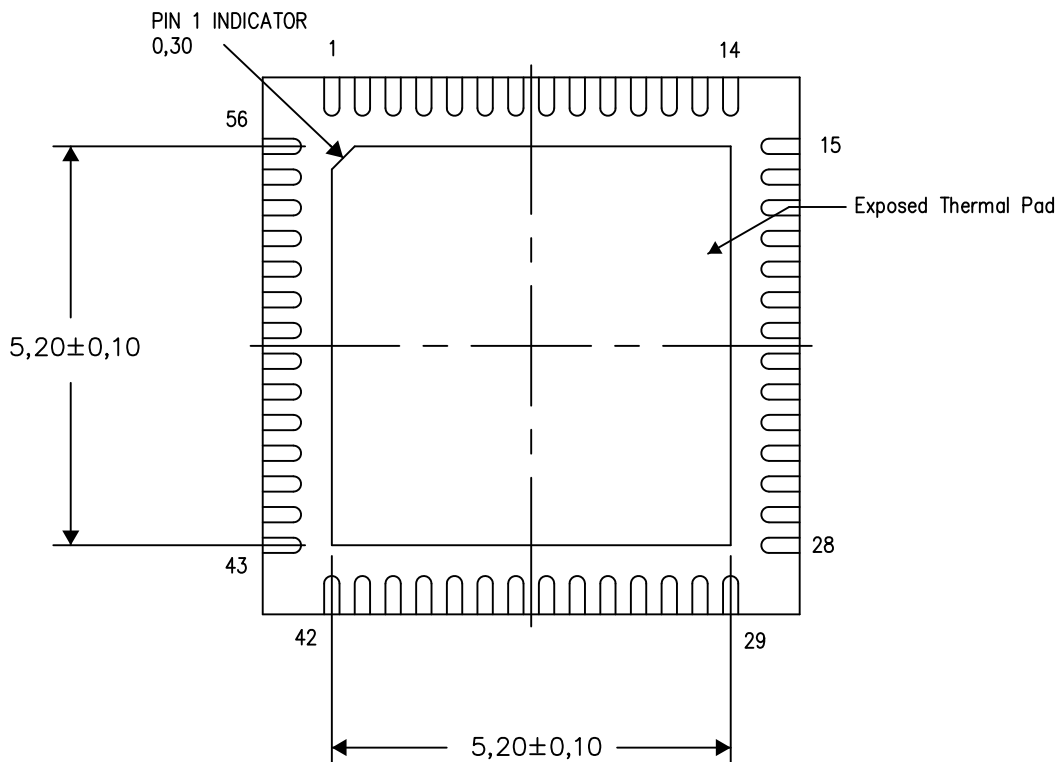
PLASTIC QUAD FLATPACK NO-LEAD

THERMAL INFORMATION

This package incorporates an exposed thermal pad that is designed to be attached directly to an external heatsink. The thermal pad must be soldered directly to the printed circuit board (PCB). After soldering, the PCB can be used as a heatsink. In addition, through the use of thermal vias, the thermal pad can be attached directly to the appropriate copper plane shown in the electrical schematic for the device, or alternatively, can be attached to a special heatsink structure designed into the PCB. This design optimizes the heat transfer from the integrated circuit (IC).

For information on the Quad Flatpack No-Lead (QFN) package and its advantages, refer to Application Report, QFN/SON PCB Attachment, Texas Instruments Literature No. SLUA271. This document is available at www.ti.com.

The exposed thermal pad dimensions for this package are shown in the following illustration.



Bottom View

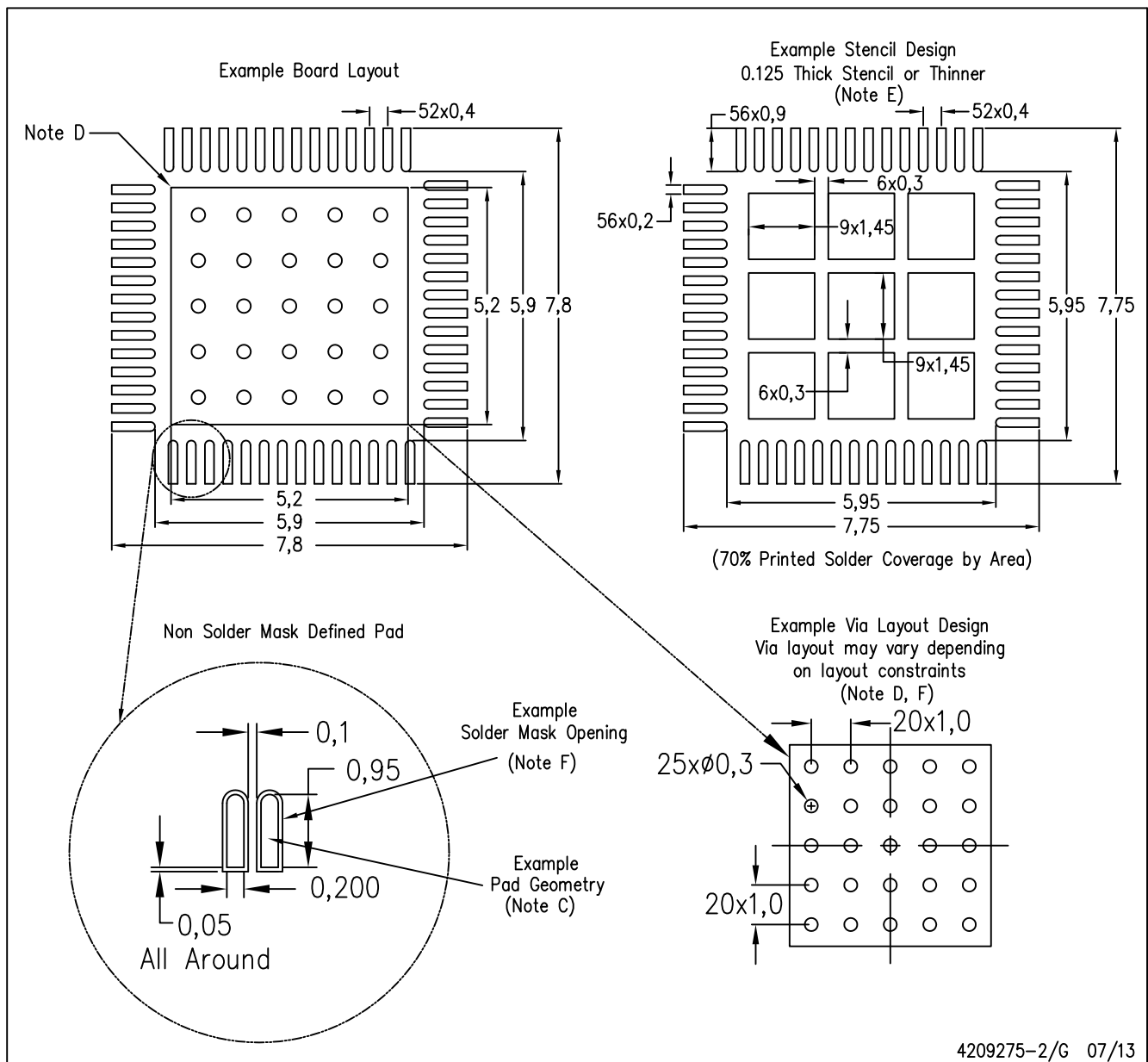
Exposed Thermal Pad Dimensions

4207553-2/1 07/13

NOTE: All linear dimensions are in millimeters

RSH (S-PVQFN-N56)

PLASTIC QUAD FLATPACK NO-LEAD



- NOTES:
- All linear dimensions are in millimeters.
 - This drawing is subject to change without notice.
 - Publication IPC-7351 is recommended for alternate designs.
 - This package is designed to be soldered to a thermal pad on the board. Refer to Application Note, Quad Flat-Pack Packages, Texas Instruments Literature No. SLUA271, and also the Product Data Sheets for specific thermal information, via requirements, and recommended board layout. These documents are available at www.ti.com <<http://www.ti.com>>.
 - Laser cutting apertures with trapezoidal walls and also rounding corners will offer better paste release. Customers should contact their board assembly site for stencil design recommendations. Refer to IPC 7525 for stencil design considerations.
 - Customers should contact their board fabrication site for recommended solder mask tolerances and via tenting recommendations for vias placed in the thermal pad.

重要なお知らせと免責事項

TI は、技術データと信頼性データ(データシートを含みます)、設計リソース(リファレンス・デザインを含みます)、アプリケーションや設計に関する各種アドバイス、Web ツール、安全性情報、その他のリソースを、欠陥が存在する可能性のある「現状のまま」提供しており、商品性および特定目的に対する適合性の黙示保証、第三者の知的財産権の非侵害保証を含むいかなる保証も、明示的または黙示的にかかわらず拒否します。

これらのリソースは、TI 製品を使用する設計の経験を積んだ開発者への提供を意図したものです。(1) お客様のアプリケーションに適した TI 製品の選定、(2) お客様のアプリケーションの設計、検証、試験、(3) お客様のアプリケーションに該当する各種規格や、その他のあらゆる安全性、セキュリティ、規制、または他の要件への確実な適合に関する責任を、お客様のみが単独で負うものとし、

上記の各種リソースは、予告なく変更される可能性があります。これらのリソースは、リソースで説明されている TI 製品を使用するアプリケーションの開発の目的でのみ、TI はその使用をお客様に許諾します。これらのリソースに関して、他の目的で複製することや掲載することは禁止されています。TI や第三者の知的財産権のライセンスが付与されている訳ではありません。お客様は、これらのリソースを自身で使用した結果発生するあらゆる申し立て、損害、費用、損失、責任について、TI およびその代理人を完全に補償するものとし、TI は一切の責任を拒否します。

TI の製品は、[TI の販売条件](#)、または [ti.com](#) やかかる TI 製品の関連資料などのいずれかを通じて提供する適用可能な条項の下で提供されています。TI がこれらのリソースを提供することは、適用される TI の保証または他の保証の放棄の拡大や変更を意味するものではありません。

お客様がいかなる追加条項または代替条項を提案した場合でも、TI はそれらに異議を唱え、拒否します。

郵送先住所 : Texas Instruments, Post Office Box 655303, Dallas, Texas 75265
Copyright © 2024, Texas Instruments Incorporated